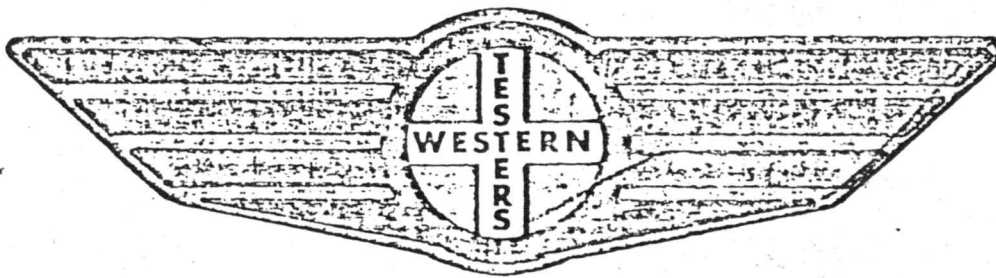


FORMATION TEST REPORT



Home Office:

Wichita, Kansas 67201

P.O. Box 1599

Phone (316) 262-5861

WESTERN TESTING CO. INC.
SUBSURFACE PRESSURE SURVEY

DATE: 3/20/85
CUSTOMER: RINE EXPLORATION COMPANY
WELL: 1-11 TEST: 1
ELEVATION (KB): 2140 FORMATION: CHEROKEE
SECTION: 11 TOWNSHIP: 24S
RANGE: 18W COUNTY: EDWARDS STATE: KANSAS
GAUGE SN #2606 RANGE: 4150 CLOCK: 12

INTERVAL TEST FROM: 4415 FT TO: 4443 FT TOTAL DEPTH: 4443 FT
DEPTH OF SELECTIVE ZONE: FT
PACKER DEPTH: 4410 FT SIZE: 6 5/8 IN PACKER DEPTH: 4415 FT SIZE: 6 5/8 IN
PACKER DEPTH: FT SIZE: IN PACKER DEPTH: FT SIZE: IN

DRILLING CONTRACTOR: STERLING DRLG
MUD TYPE: POLYPAC VISCOSITY: 54
WEIGHT: 9.6 WATER LOSS (CC): 16.8
CHLORIDES (P.P.M.): 17000
JARS - MAKE: NO SERIAL NUMBER:
DID WELL FLOW? NO REVERSED OUT? NO
DRILL COLLAR LENGTH: 432 FT I.D.: 2.25 IN
WEIGHT PIPE LENGTH: FT I.D.: IN
DRILL PIPE LENGTH: 3963 FT I.D.: 3.8 IN
TEST TOOL LENGTH: 20 FT TOOL SIZE: 5 1/2 OD IN
ANCHOR LENGTH: 28 FT SIZE: 5 1/2 OD IN
SURFACE CHOKE SIZE: 3/4 IN BOTTOM CHOKE SIZE: 3/4 IN
MAIN HOLE SIZE: 7 7/8 IN TOOL JOINT SIZE: 4 1/2 FH IN

BLOW: INITIAL FLOW PERIOD VERY WEAK
STEADY BLOW. FINAL FLOW PERIOD
VERY WEAK STEADY BLOW FOR 15
MINUTES.

RECOVERED: 60 FT OF: OIL SPOTTED MUD.
RECOVERED: FT OF:
RECOVERED: FT OF:
RECOVERED: FT OF:
RECOVERED: FT OF:
RECOVERED: FT OF:
RECOVERED: FT OF:
RECOVERED: FT OF:
RECOVERED: FT OF:
RECOVERED: FT OF:

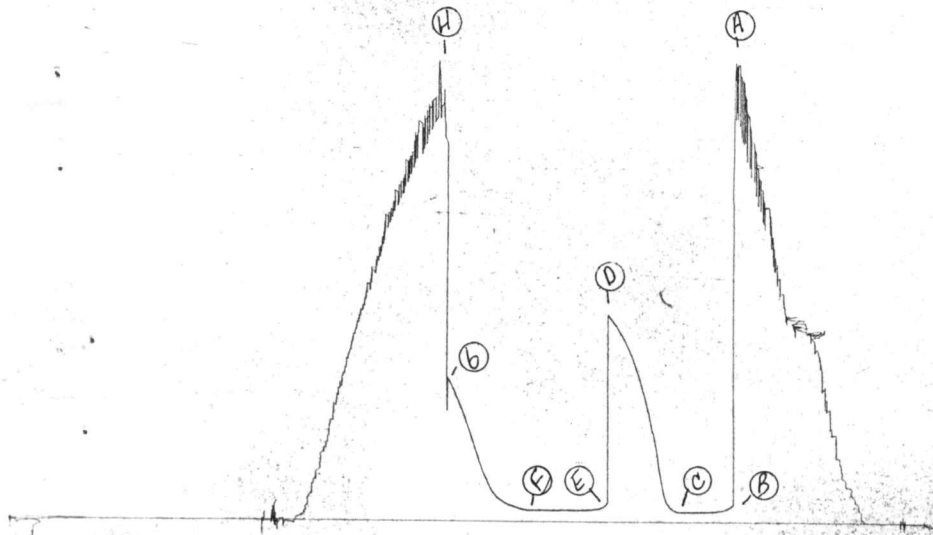
REMARKS:

TIME SET PACKER(S): 10:45 AM TIME STARTED OFF BOTTOM: 2:15 PM
WELL TEMPERATURE: 122 °F
INITIAL HYDROSTATIC PRESSURE: (A) 2324 PSI
INITIAL FLOW PERIOD MIN: 35 (B) 50 PSI TO (C) 50 PSI
INITIAL CLOSED IN PERIOD MIN: 57 (D) 1089 PSI
FINAL FLOW PERIOD MIN: 60 (E) 59 PSI TO (F) 59 PSI
FINAL CLOSED IN PERIOD MIN: 60 (G) 744 PSI
FINAL HYDROSTATIC PRESSURE (H) 2280 PSI

2606 115741

TKT # 8353

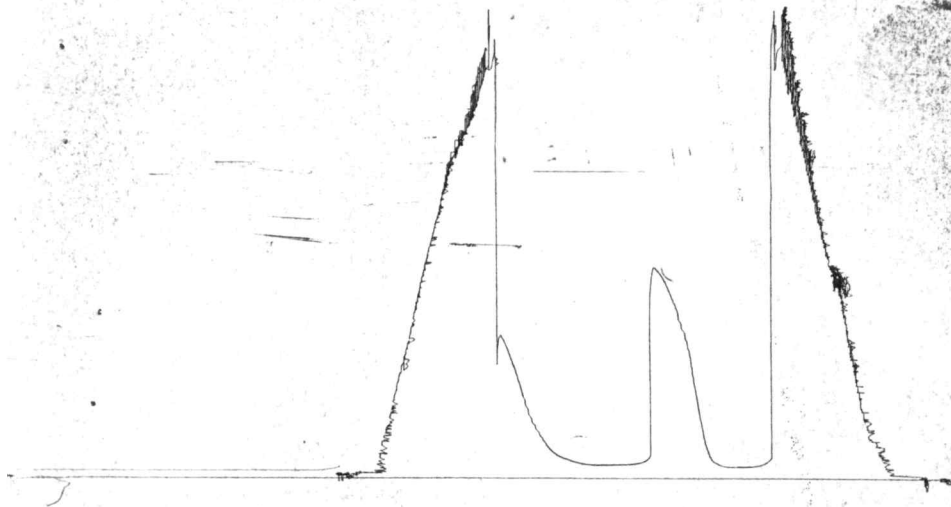
I



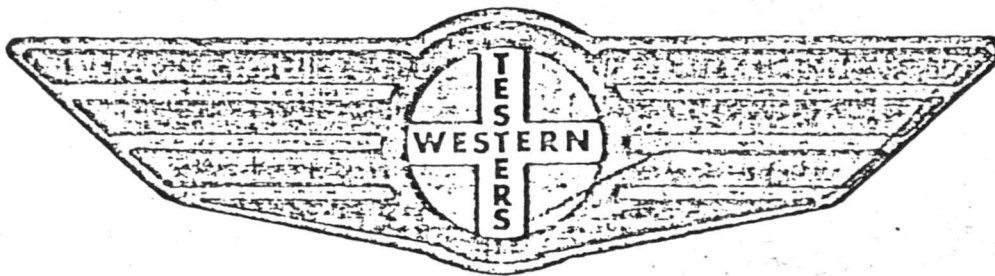
12041-11011

TKT # 8353

0



FORMATION TEST REPORT



Home Office:

Wichita, Kansas 67201

P.O. Box 1599

Phone (316) 262-5861

Company KLINE EXPLORATION COMPANY Lease and Well No. #1-11 SLENTIZ Sec. 11 Twp. 24S Rge. 18W Test No. 2 Date 3/21/8

WESTERN TESTING CO. INC.
SUBSURFACE PRESSURE SURVEY

DATE: 3/21/85 TICKET #8354
CUSTOMER: RINE EXPLORATION COMPANY LEASE: SLENTZ
WELL: 1-11 TEST: 2 GEOLOGIST: SANDERS
ELEVATION (KB): 2140 FORMATION: MISSISSIPPI
SECTION: 11 TOWNSHIP: 24S
RANGE: 18W COUNTY: EDWARDS STATE: KANSAS
GAUGE SN #2606 RANGE: 4150 CLOCK: 12

INTERVAL TEST FROM: 4471 FT TO: 4482 FT TOTAL DEPTH: 4482 FT
DEPTH OF SELECTIVE ZONE: FT
PACKER DEPTH: 4466 FT SIZE: 6 5/8 IN PAKER DEPTH: 4471 FT SIZE: 6 5/8 IN
PACKER DEPTH: FT SIZE: IN PAKER DEPTH: FT SIZE: IN

DRILLING CONTRACTOR: STERLING DRLG
MUD TYPE: POLYPAC VISCOSITY: 51
WEIGHT: 9.4 WATER LOSS (CC): 16.8
CHLORIDES (P.P.M.): 17000
JARS - MAKE: NO SERIAL NUMBER:
DID WELL FLOW? NO REVERSED OUT? NO
DRILL COLLAR LENGTH: 432 FT I.D.: 2.25 IN
WEIGHT PIPE LENGTH: FT I.D.: IN
DRILL PIPE LENGTH: 4019 FT I.D.: 3.8 IN
TEST TOOL LENGTH: 20 FT TOOL SIZE: 5 1/2 OD IN
ANCHOR LENGTH: 11 FT SIZE: 5 1/2 OD IN
SURFACE CHOKE SIZE: 3/4 IN BOTTOM CHOKE SIZE: 3/4 IN
MAIN HOLE SIZE: 7 7/8 IN TOOL JOINT SIZE: 4 1/2 FH IN

BLOW: INITIAL FLOW PERIOD STRONG BLOW
IN 6 MINUTES. FINAL FLOW PERIOD
STRONG BLOW. NO GAS TO SURFACE.

RECOVERED: 120 FT OF: OIL & GAS CUT MUD (5% GAS; 5% OIL; 90% MUD).
RECOVERED: 60 FT OF: HEAVY OIL & GAS CUT MUD.
RECOVERED: FT OF: (15% OIL; 10% GAS; 20% WATER; 55% MUD).
RECOVERED: 120 FT OF: OIL & GAS CUT WATER (10% GAS; 3% OIL; 87% WATER).

RECOVERED: FT OF: CHLORIDES 72000 PPM.
RECOVERED: FT OF:
RECOVERED: FT OF:
RECOVERED: FT OF:
RECOVERED: FT OF:

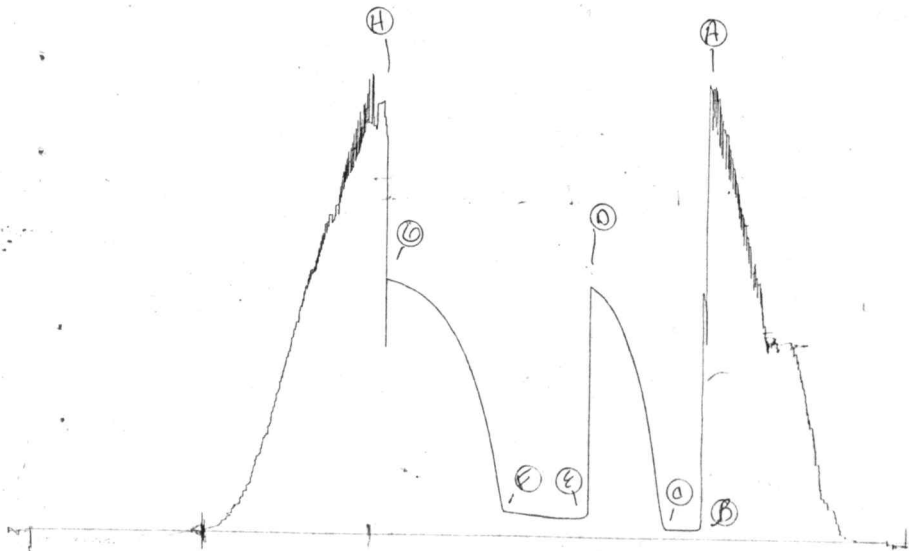
REMARKS:

TIME SET PACKER(S): 3:45 AM TIME STARTED OFF BOTTOM: 7:45 AM
WELL TEMPERATURE: 128 °F
INITIAL HYDROSTATIC PRESSURE: (A) 2386 PSI
INITIAL FLOW PERIOD MIN: 25 (B) 48 PSI TO (C) 49 PSI
INITIAL CLOSED IN PERIOD MIN: 60 (D) 1329 PSI
FINAL FLOW PERIOD MIN: 60 (E) 101 PSI TO (F) 131 PSI
FINAL CLOSED IN PERIOD MIN: 90 (G) 1351 PSI
FINAL HYDROSTATIC PRESSURE (H) 2280 PSI

2606 VSTAC

JKH 8354

I



13267 VST #2

2/4 # 8354
0

