

DX 78-1

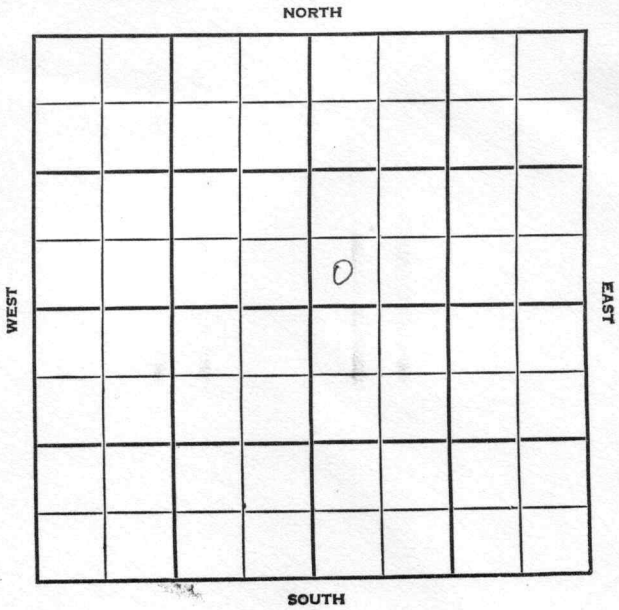
Stafford

KANSAS

Section 2 Township 24 Range 14W

Well No. #1 Curtis

Company Leban Drlg



# HOT FILE

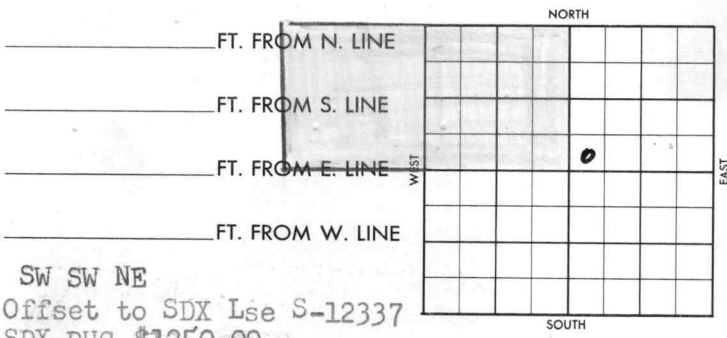
# Stafford KANSAS

SEC. 2      TWP. 24 S      R. 14 W

WELL NO. # 1 Curtis FARM

COMPANY Leben Drlg. Inc.

CONTRACTOR



*Don't advise*

1956      ELEVATION 1954' DF      REPORT (WH6-DC38)

- 5/24 ~~Arbuck~~ Arbuckle Lime test appx 4200'  
To commence by July 8, 1956  
To complete by August 1, 1956.
- 6/6 Location (FR Tkt)  
Spud 6-9-56
- 6/15 Set surface @ 201  
Drlg. 2980' (Wire-Leben Drlg.)
- 6/16 Drlg. 3350' "
- 6/18 Drlg. 3660'  
DST #1, 3630-3648, open 1 hr. SI  
20 mins, rec 45' gas cut mud. BHP 0#  
Hebner 3468', Brown lime 3607',  
Lansing-KC 3628' (Wire-Leben Drlg.)
- 6/19 Drlg. 3760'  
DST #2, 3690-3702, rec 195' salt  
water. BHP 1160# (Wire-Leben Drlg.)
- 6/20 Drlg. 3978'  
DST #3, 3805-3978, open 30 mins,  
SI 20 mins, rec 25' mud, BHP 1200#  
Base of the Kansas City 3880' "
- 6/21 Drlg. 4010'  
DST #4, 3954-4000' open 1 hr SI 20 min  
rec 2520' gas, 60' sli oil & gas cut  
mud, 150' heavy oil & gas cut ~~mud~~ mud  
BHP 290#. (Wire-Leben Drlg. Co.)

OVER

1956

6-22

Drlg. 4075' ~~Langix~~  
Cong. 3964', Viola 3996'  
DST 4001-4020 op 30 min. (shutin 20min)  
rec. 25' mud; BHP 0# (Wire-LebenDrlg)

6-23

Drlg. @ 4163'. "

6-25

D & A @ 4210'

Simpson 4130', Arb. 4183'. "

6/27

Spud 6-9-56

Comp. 6-27-56

TD 4210'. D & A. (Scout Comp. Tkt)

**ABANDONED**



County Stafford Elev. 1954 06  
1926 KB  
 Sec. 2 Twp. 24 Rge. 11W  
 Company Leben rls.  
Curtis No. 1

Co.

	DEPTH	LOG	DATUM	Loc. in Sec.
Ann.	860-85			SW NW NE
Ip.				
H.	3468			
Tr.				
Dg.				
BL.	3607			
L.	3628			
K.C.				Geol.
S.X.C.	3880			Contr.
Ce.				
C.	3964			
M.				
M.				Pool
K.				
Mz.				
Mo.				
V.	3996			ABANDONED
S.	4130			
S.				
A.	4183			
R.				
Pe.				
G.				
T.D.	4210			

Loc.

No.

Sec.

T.

R.

Date Comm. JUN 27 '56  
 Location JUN 13 '56 Spd 6-9-56 85/20  
~~1815~~ 205/175 ~~1815~~ JUN 20 '56  
 HB 3468 BH 3607 L59 3628 DST  
 3630-48 of 1hr. rec 48' GCM  
 BHP 0/20" DST 3690-3702 of 1hr.  
 rec 195' SW BHP 1160  $\Phi$  3760  
JUN 27 '56 X DST 3805-3978 of 30" rec  
 25' Md BHP 1200 BKG 3880 Cg 3964  
~~1815~~ Viola 3996 DST 3954-4000 of 1hr.

2-24-14VV SWSWNE

2520' GIP see 60' 50' GCM + 150'  
H0 & GCM BHP 290/20" ~~37~~ ~~4120~~  
~~4120~~ DST 4001-20 of 30"  
see 25' Md BHP 0 SP 4130  
FIB 4183 RTP 4210

D&amp;A