



WESTERN TESTING CO., INC.
FORMATION TESTING

TICKET NO 16311

P. O. BOX 1599 WICHITA, KANSAS 67201
PHONE (316) 262-5861

Elevation 1791 KB Formation Miss Eff. Pay Ft.

District 12 PRATT Date 7-25-90 Customer Order No.

COMPANY NAME Honey Oil Co Inc Suite 505

ADDRESS 401 East Douglas Wichita Kansas 67202

LEASE AND WELL NO. Goss #1 COUNTY Stafford STATE Kansas Sec. 11 Twp. 25 Rge. 11W

Main Invoice To Same Co. Name Goss #1 No. Copies Requested

Mail Charts To Same Goss #1 Address No. Copies Requested

Formation Test No. 1 Interval Tested From 3834 ft. to 3884 ft. Total Depth 3884 ft.

Packer Depth 3829 ft. Size 2 1/8 in. Packer Depth 2 ft. Size 2 in.

Packer Depth 3834 ft. Size 2 1/8 in. Packer Depth 2 ft. Size 2 in.

Depth of Selective Zone Set

Top Recorder Depth (Inside) 3837 ft. Recorder Number 1051 Cap. 4250

Bottom Recorder Depth (Outside) 3840 ft. Recorder Number 4332 Cap. 4200

Below Straddle Recorder Depth ft. Recorder Number Cap.

Drilling Contractor Duke Drilling Rig 2 Drill Collar Length 289 I. D. in.

Mud Type Chem Viscosity 42 Weight Pipe Length 289 I. D. 2.5 in.

Weight 9.4 Water Loss 11.6 cc. Drill Pipe Length 3525 I. D. 3.2 in.

Chlorides 9,700 P.P.M. Test Tool Length 20 ft. Tool Size 5/8 in.

Jars: Make WTC Serial Number 401 Anchor Length 50 ft. Size 5/8 in.

Did Well Flow? NO Reversed Out 20 Surface Choke Size 3/4 in. Bottom Choke Size 3/4 in.

Main Hole Size 7/8 in. Tool Joint Size 4 1/2 in.

Blow: Strong blow in 20 minutes on initial flow

Strong blow on final flow NO gas to surface

Recovered 90 ft. of gas + oil cut mud 10% gas 5% oil 85% mud

Recovered 160 ft. of 1/2 gas in pipe 4.5 Oil 7.7 W

Chlorides P.P.M. Sample Jars used Remarks:

Time On Location 7:00 A.M. Time Pick Up Tool 8:30 A.M. Time Off Location 5:00 A.M.

Time Set Packer(s) 9:55 P.M. Time Started Off Bottom 2:55 A.M. Maximum Temperature 122 of

Initial Hydrostatic Pressure (A) 1920 P.S.I.

Initial Flow Period Minutes 30 (B) 75 P.S.I. to (C) 75 P.S.I.

Initial Closed In Period Minutes 60 (D) 322 P.S.I.

Final Flow Period Minutes 70 (E) 107 P.S.I. to (F) 107 P.S.I.

Final Closed In Period Minutes 120 (G) 644 P.S.I.

Final Hydrostatic Pressure (H) 1867 P.S.I.

COMPANY TERMS

Western Testing Co., Inc. shall not be liable for damages of any kind to the property or personnel of the one for whom a test is made or for any loss suffered or sustained directly or indirectly through the use of its equipment, of its statements or opinion concerning the results of any test. Tools lost or damaged in the hole shall be paid at cost by the party for whom the test is made.

All charges subject to 12% interest after 60 days from date of invoice. Any expense incurred for collection will be added to the original amount.

Test Approved By [Signature] Signature of Customer or his authorized representative

Western Representative Ted Ritt Thank You 2076

FIELD INVOICE

Table with 2 columns: Item and Amount. Items include Open Hole Test (\$450), Misrun, Straddle Test, Jars, Selective Zone, Safety Joint, Standby, Evaluation, Extra Packer, Circ. Sub., Mileage, Fluid Sampler, Extra Charts, Insurance, Telecopier, and TOTAL.

WESTERN TESTING CO., INC.
Pressure Data

Date 7-25-50 Test Ticket No. 16311
 Recorder No. 1051 Capacity 4250 Location _____ Ft.
 Clock No. _____ Elevation _____ Well Temperature 122 °F

Point	Pressure	Open Tool	Time Given	Time Computed
A Initial Hydrostatic Mod	<u>1918</u> P.S.I.		<u>9:55A</u> M	
B First Initial Flow Pressure	<u>82</u> P.S.I.	First Flow Pressure	<u>30</u> Min	<u>39</u> Min
C First Final Flow Pressure	<u>82</u> P.S.I.	Initial Closed-In Pressure	<u>60</u> Min	<u>66</u> Min
D Initial Closed-In Pressure	<u>225</u> P.S.I.	Second Flow Pressure	<u>90</u> Min	<u>90</u> Min
E Second Initial Flow Pressure	<u>94</u> P.S.I.	Final Closed-In Pressure	<u>100</u> Min	<u>103</u> Min
F Second Final Flow Pressure	<u>94</u> P.S.I.			
G Final Closed-In Pressure	<u>620</u> P.S.I.			
H Final Hydrostatic Mod	<u>1869</u> P.S.I.			

PRESSURE BREAKDOWN

Point Mins.	First Flow Pressure	Initial Shut-In	Second Flow Pressure	Final Shut-In			
	Breakdown: _____ Inc. of <u>5</u> mins. and a final inc. of <u>0</u> Min.	Breakdown: _____ Inc. of <u>3</u> mins. and a final inc. of <u>0</u> Min.	Breakdown: _____ Inc. of <u>5</u> mins. and a final inc. of <u>0</u> Min.	Breakdown: _____ Inc. of <u>3</u> mins. and a final inc. of <u>0</u> Min.			
Point Mins.	Press.	Point Minutes	Press.	Point Minutes	Press.	Point Minutes	Press.
P 1 0	<u>82</u>	0	<u>82</u>	0	<u>94</u>	0	<u>94</u>
P 2 5		3		5		3	
P 3 10		6		10		6	
P 4 15		9		15		9	
P 5 20		12		20		12	<u>94</u>
P 6 25		15	<u>82</u>	25		15	<u>97</u>
P 7 30	<u>82</u>	18		30		18	<u>103</u>
P 8 35		21	<u>82</u>	35		21	<u>108</u>
P 9 40		24	<u>82</u>	40		24	<u>114</u>
P 10 45		27	<u>88</u>	45		27	<u>124</u>
P 11 50		30	<u>95</u>	50		30	<u>137</u>
P 12 55		33	<u>110</u>	55		33	<u>154</u>
P 13 60		36	<u>122</u>	60		36	<u>167</u>
P 14 65		39	<u>141</u>	65		39	<u>182</u>
P 15 70		42	<u>157</u>	70		42	<u>195</u>
P 16 75		45	<u>180</u>	75		45	<u>209</u>
P 17 80		48	<u>201</u>	80		48	<u>224</u>
P 18 85		51	<u>219</u>	85		51	<u>239</u>
P 19 90		54	<u>242</u>	90	<u>94</u>	54	<u>257</u>
P 20 95		57	<u>264</u>	95		57	<u>271</u>
100		60	<u>285</u>	100		60	<u>287</u>
		<u>63</u>	<u>309</u>				
		<u>120</u>	<u>215</u>				

WESTERN TESTING CO., INC.
Pressure Data

Date _____ Test Ticket No. 1621
 Recorder No. _____ Capacity _____ Location _____ Ft. _____
 Clock No. _____ Elevation _____ Well Temperature _____ °F

Point	Pressure		Time Given	Time Computed
A Initial Hydrostatic Mud _____ P.S.I.		Open Tool		M _____
B First Initial Flow Pressure _____ P.S.I.		First Flow Pressure	_____ Mins.	_____ Mins.
C First Final Flow Pressure _____ P.S.I.		Initial Closed-in Pressure	_____ Mins.	_____ Mins.
D Initial Closed-in Pressure _____ P.S.I.		Second Flow Pressure	_____ Mins.	_____ Mins.
E Second Initial Flow Pressure _____ P.S.I.		Final Closed-in Pressure	_____ Mins.	_____ Mins.
F Second Final Flow Pressure _____ P.S.I.				
G Final Closed-in Pressure _____ P.S.I.				
H Final Hydrostatic Mud _____ P.S.I.				

PRESSURE BREAKDOWN

Point Mins.	First Flow Pressure	Initial Shut-In	Second Flow Pressure	Final Shut-In
	Breakdown: _____ Inc. of _____ mins. and a final inc. of _____ Min.	Breakdown: _____ Inc. of _____ mins. and a final inc. of _____ Min.	Breakdown: _____ Inc. of _____ mins. and a final inc. of _____ Min.	Breakdown: _____ Inc. of _____ mins. and a final inc. of _____ Min.
	Press.	Point Minutes	Press.	Point Minutes
P 1 105	_____	63	_____	63 <u>307</u>
P 2 110	_____	66	_____	66 <u>325</u>
P 3 115	_____	69	_____	69 <u>339</u>
P 4 120	_____	72	_____	72 <u>355</u>
P 5 125	_____	75	_____	75 <u>375</u>
P 6 130	_____	78	_____	78 <u>392</u>
P 7 135	_____	81	_____	81 <u>409</u>
P 8 140	_____	84	_____	84 <u>423</u>
P 9 145	_____	87	_____	87 <u>441</u>
P10 150	_____	90	_____	90 <u>457</u>
P11 155	_____	93	_____	93 <u>474</u>
P12 160	_____	96	_____	96 <u>488</u>
P13 165	_____	99	_____	99 <u>503</u>
P14 170	_____	102	_____	102 <u>519</u>
P15 175	_____	105	_____	105 <u>533</u>
P16 180	_____	108	_____	103 <u>545</u>
P17 185	_____	111	_____	111 <u>560</u>
P18 190	_____	114	_____	114 <u>574</u>
P19 195	_____	117	_____	117 <u>589</u>
P20 200	_____	120	_____	120 <u>603</u>
				<u>122 620</u>

FORMATION TEST REPORT



Home Office:

Wichita, Kansas 67201

P.O. Box 1599

Phone (316) 262-5861

WESTERN TESTING CO. INC.
SUBSURFACE PRESSURE SURVEY

DATE : 7-25-90 TICKET : 16311
CUSTOMER : HONEY OIL COMPANY INC. LEASE : GOSS
WELL : #1 TEST: 1 GEOLOGIST : BAKER
ELEVATION : 1791 K.B. FORMATION : MISSISSIPPI
SECTION : 11 TOWNSHIP : 25S
RANGE : 11W COUNTY : STAFFORD STATE : KANSAS
GAUGE SN# : 1051 RANGE : 4250 CLOCK : 12

INTERVAL FROM : 3834 TO : 3884 TOTAL DEPTH : 3884
DEPTH OF SELECTIVE ZONE :
PACKER DEPTH : 3829 SIZE : 6.63
PACKER DEPTH : 3834 SIZE : 6.63
PACKER DEPTH : SIZE :
PACKER DEPTH : SIZE :

DRILLING CON. : DUKE DRILLING RIG #2
MUD TYPE : CHEMICAL VISCOSITY : 42
WEIGHT : 9.4 WATER LOSS (CC) : 11.6
CHLORIDES (PPM) : 9700
JARS-MAKE : WTC SERIAL NUMBER : 401
DID WELL FLOW ? : NO REVERSED OUT ? : NO

DRILL COLLAR LENGTH : 0 FT I.D. inch : 0.00
WEIGHT PIPE LENGTH : 289 FT I.D. inch : 2.50
DRILL PIPE LENGTH : 3525 FT I.D. inch : 3.80
TEST TOOL LENGTH : 20 FT TOOL SIZE : 5.50
ANCHOR LENGTH : 50 FT ANCHOR SIZE : 5.50
SURFACE CHOKE SIZE : .75 IN BOTTOM CHOKE SIZE : .75
MAIN HOLE SIZE : 7.875 IN TOOL JOINT SIZE : 4.5XH

BLOW COMMENT #1 : INITIAL FLOW PERIOD STRONG BLOW IN 20 MINUTES.
BLOW COMMENT #2 : FINAL FLOW PEIRIOD STRONG BLOW. NO GAS TO SURFACE.
BLOW COMMENT #3 :
BLOW COMMENT #4 :

RECOVERED : 90 FT OF: GAS & OIL-CUT MUD
RECOVERED : 0 FT OF: 10%GAS 5%OIL 85%MUD

Total Barrels Fluid = 0.55
Total Fluid Prod Rate = 6.56 BFPD
Indicated Oil Rate = 0.33 BOPD
Indicated Wtr Rate = 0.56 BWPD
Corrected Oil Rate = 2.33 BOPD
Corrected Wtr Rate = 3.99 BWPD

REMARK 1 :
REMARK 2 : 160 FT. GAS ABOVE FLUID
REMARK 3 :
REMARK 4 :

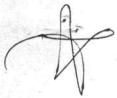
SET PACKER(S) : 9:55 A.M. TIME STARTED OFF BOTTOM : 2:55 P.M.
WELL TEMPERATURE : 122
INITIAL HYDROSTATIC PRESSURE (A) 1918
INITIAL FLOW PERIOD MIN: 30 (B) 82 PSI TO (C) : 82
INITIAL CLOSED IN PERIOD MIN: 66 (D) 325
FINAL FLOW PERIOD MIN: 90 (E) 94 PSI TO (F) : 94
FINAL CLOSED IN PERIOD MIN: 123 (G) 620
FINAL HYDROSTATIC PRESSURE (H) 1869

COMPANY : HONEY OIL COMPANY INC.
 WELL : #1
 GAUGE # : 1051
 DATE : 25/ 7/90

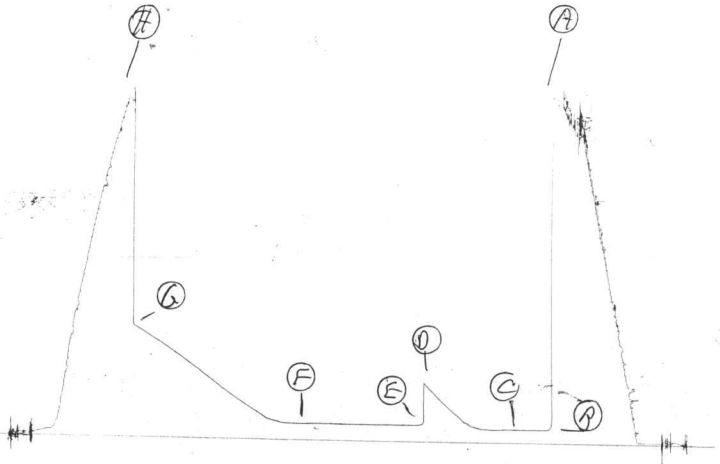
FIELD : GOSS
 JOB # : 16311
 DEPTH : 3884
 TEST :

DATA No.	REAL TIME HR:MN:SS	ELAPSE TIME DELTA HOURS	PRESSURE PSIG	TEMP DEG F	DELTA P Pi-P(i-1)
FINAL SHUT-IN PERIOD					
50	13: 3:59	3.150	94.000	122.00	0.000
51	13: 6:59	3.200	94.000	122.00	0.000
52	13:10: 0	3.250	94.000	122.00	0.000
53	13:13: 0	3.300	94.000	122.00	0.000
54	13:16: 0	3.350	97.000	122.00	3.000
55	13:19: 0	3.400	103.000	122.00	6.000
56	13:22: 0	3.450	108.000	122.00	5.000
57	13:25: 0	3.500	114.000	122.00	6.000
58	13:28: 0	3.550	124.000	122.00	10.000
59	13:31: 0	3.600	137.000	122.00	13.000
60	13:34: 0	3.650	154.000	122.00	17.000
61	13:37: 0	3.700	167.000	122.00	13.000
62	13:40: 0	3.750	182.000	122.00	15.000
63	13:43: 0	3.800	195.000	122.00	13.000
64	13:46: 0	3.850	209.000	122.00	14.000
65	13:49: 0	3.900	224.000	122.00	15.000
66	13:52: 0	3.950	239.000	122.00	15.000
67	13:55: 0	4.000	257.000	122.00	18.000
68	13:58: 0	4.050	271.000	122.00	14.000
69	14: 1: 0	4.100	287.000	122.00	16.000
70	14: 3:59	4.150	307.000	122.00	20.000
71	14: 7: 0	4.200	325.000	122.00	18.000
72	14:10: 0	4.250	339.000	122.00	14.000
73	14:13: 0	4.300	355.000	122.00	16.000
74	14:16: 0	4.350	375.000	122.00	20.000
75	14:18:59	4.400	392.000	122.00	17.000
76	14:22: 0	4.450	409.000	122.00	17.000
77	14:25: 0	4.500	423.000	122.00	14.000
78	14:28: 0	4.550	441.000	122.00	18.000
79	14:31: 0	4.600	457.000	122.00	16.000
80	14:33:59	4.650	474.000	122.00	17.000
81	14:37: 0	4.700	488.000	122.00	14.000
82	14:40: 0	4.750	503.000	122.00	15.000
83	14:43: 0	4.800	519.000	122.00	16.000
84	14:46: 0	4.850	533.000	122.00	14.000
85	14:48:59	4.900	545.000	122.00	12.000
86	14:52: 0	4.950	560.000	122.00	15.000
87	14:55: 0	5.000	574.000	122.00	14.000
88	14:58: 0	5.050	589.000	122.00	15.000
89	15: 1: 0	5.100	603.000	122.00	14.000
90	15: 3:59	5.150	620.000	122.00	17.000

WESTERN TESTING CO. INC.



KT Wall
I



7K7 10311

0

