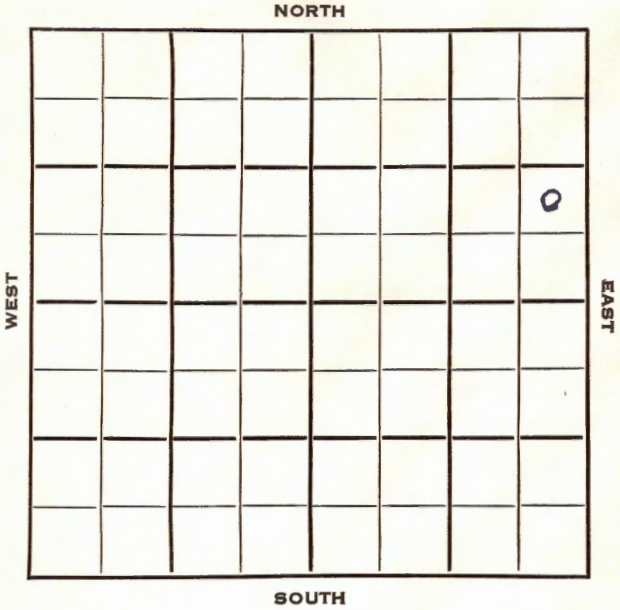


Section 12 Township 25 Range 12W

Well No. 1 Rundell

Company Westpan Hydrocarbon



HOT FILE

Stafford

KANSAS

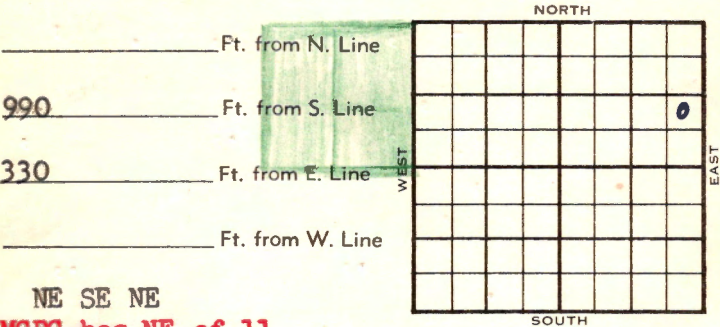
SEC.	TWP.	R.
12	25	12 W ✓

WELL NO. _____

COMPANY **# 1 Rundell** FARM

CONTRACTOR **Westpan Hydrocarbon**

Hilton Drlg.



NE SE NE
MCPC has NE of 11

	ELEVATION	REPORT
1953	1824'	
11/4	Location	
11/12	Spud 11-3-53 Set 8" @ 258 w/175 Drlg. 2900'	(Ltr-McGehee)
11/19	Heeb. 3301. Br. lime 3462' Lans. 3491' DST 3534-65, open 1 hr rec 180' gas, 80' OCM, 60' SW 1000# Cong. 3846' Viola 3913' DST 3914-20, open 1 hr gas in 20 min rec 330' oil, 1170# TD 3920' Ran Schl. Set 5" @ 3914' (Ltr-McGehee)	
11/25	Drilled plug. S/55.95 B0 12 hr. Testing.	(Ltr-Gilstrap)
12/10	S/133 B0 plus 3% wtr in 32 hrs. Viola 3915'	(Ltr-McGehee)
12/16	N.R.	
12/22	Pumped 5 BOPH for 2 hrs.	"
1954		
1/6	N.R.	
1/13	"	

OVER

1954
1/20

Spud 11-3-53

Oil Well

TD 3920'

8" @ 258'

Heeb 3301', Br lime 3462', Lans
3491'

DST 3534-65', opn 1 hr., rec. 180'
gas, 80' ocm, 60' sw, 1000#

Cong 3846', Viola 3913'

DST 3914-20', opn 1 hr., gas in 20",
rec. 330' oil, 1170#

TD 3920'

5" @ 3914'

S/56 bo 12 hrs., S/133 bo 3% wtr.,
32 hrs.

Viola 3915'

P/17 boph 2 hrs.

P/5 boph 2 hrs.

Comp. 20 bopd 10% wtr.

COMPLETED

