

O. W. P. B.
DX 78-1

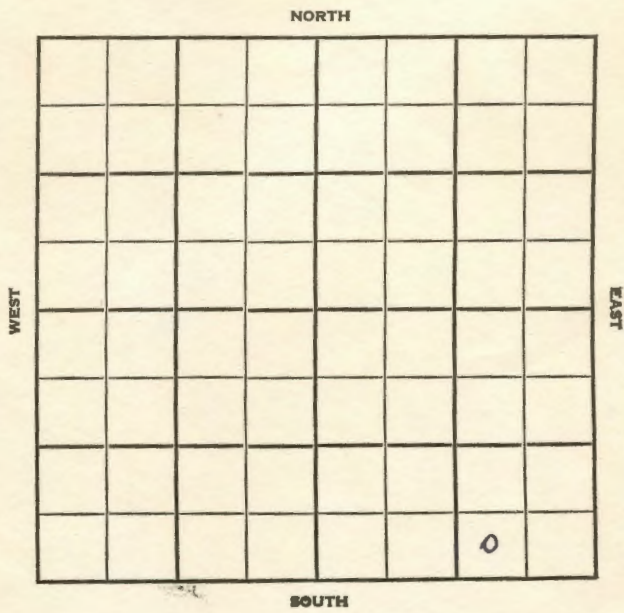
Stafford

KANSAS

Section 7 Township 25 Range 13W

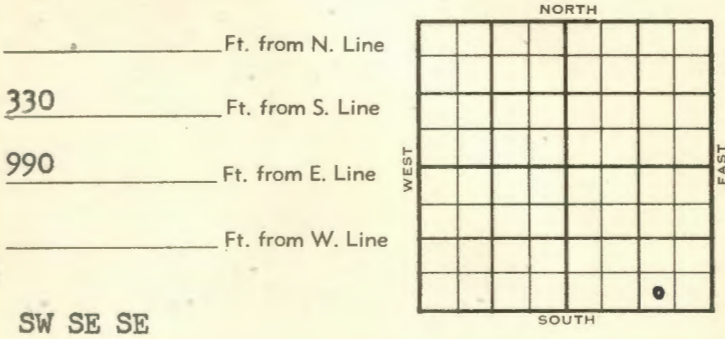
Well No. #1 O'Dell

Company G R A



SEC.	TWP.	R.
7	25	13W

WELL NO. 1 O'Dell FARM
 COMPANY
 C R A
 CONTRACTOR Kacklemen Co. Tools



	ELEVATION	REPORT
1955	1958'	

1/5 MIR
 3/30 Spud 1-7-55 - Oil Well
 TD 4308'
 8" @ 252'
 Heeb. 3504', Top. 3521', Doug. 3542',
 Br line 3647', ans. 3672'
 DST 3808-21, opn 1 hr., gas in 30",
 rec. 195' gcm, 1225#
 DST 3824-39', opn 1 hr., gas in 45",
 rec. 150' gco, 900#
 DST 3841-54, opn 1 hr., rec. 30' socm,
 150#
 DST 3889-99, opn 1 hr., 180' gas, 30'
 ocm, 30' hocm, 950#
 DST 3913-26, opn 1 hr., rec. 360' gas,
 40' ocm, 380#
 Miss. 4020'
 DST 3928-46, opn 1 hr., rec. 20'
 vsocm, 0#
 DST 4023-36, opn 1 hr., rec. 35' mud,
 0#
 Viola 4107'
 DST 4109-56, opn 1 hr., rec. 25' mud,
 0# Simp. sdh 4231'
 Simp. sd 4245', Arb. 4285'

(Information Brought Forward)

1955
3/30

DST 4287-98', opn 1 hr., rec. 2160'
gas, 1600' oil, 75' wtr, 750#

TD 4308'

5" @ 4307'

Schl Tops: Heeb. 3503', Tor 3521',
Doug. 3541', Br Lime 3646', Laps.
3672', Miss 4016', Kh. 4029', Viola
4091', Simp. sh 4230', Simp sd 4251',
Arb. 4282'

TD 4308'

CO to 4295'

20/4284-89, FU 500' oil

1 hr., S/45 bo 10 hrs., P/20 bf 4 hrs.

50% wtr., P/40 bo 20% wtr., 24 hrs.,

CO to 4295'

20/4289-94, 500A

S/ 3.42 boph

P/50.40 bf 20% wtr.

P/24.51 bf 38% wtr.

P/10.44 bo 5.80 bw 1000A, 5000A

P/34.80 bf 60% wtr.

CO to 4307

40/4294-4304, 1.40 bo 3.51 bw

SP 3955

40/3889-99, 2 gwph 2000A

P/109 bf 42% wtr.

P/27.44 bo 19.32 bw 24 hrs.

P/27 bo 16 bw 24 hrs.

Comp. 29 bopd 20% wtr.

COMPLETED

1955
10/19

O. W. P. B.

5" @ 4307' CO 4307' B/46 GO

3000 A. SP 3860 28/3832-39 B/26.73

GO 1 hr. B/13.36 GO 1 hr. 1000 A

S/77 BO 1 hr. S/16.24 BO 1 hr.

16/3828-32 4000 A S/126 BO 30% wtr.

8 hr. SP 3826 32/3814-22 B/9½ GO

7 hr. 4000 A. S/85.72 BO 7½ hr.

T & R TD 4308'

KC 3672', M. 4016', K. 4029', V. 4091'
sh 4230', sd 4251', A 4282',

1955

11/9 5th @ 4307

KC	3672
M	4016
K	4029
V	4091
sh	4230
sd	4251
A	4282

TD 4308

CO to 4307 B/46 go 3000 A SP
3860 28/3832-39 B/26.73 go 1 hr
B/13.36 go 1 hr 1000 A S/77 bo 1 hr
S/16.24 bo 1 hr 16/3828-32 4000 A
S/126 bo 30% wtr 8 hr SP ~~282~~ 3826
32/3814-22 B/9½ go 7 hr 4000 A
S/85.72 bo 7½ hr P/140 bo 10% wtr
23 hr P/76 bo 12% wtr 14 hr
Comp 128 bopd 10% wtr

COMPLETED

ASSEMBLED

County **Stafford** State **Kansas**
 Sec. **7** (Blk. Twp.) **25** (Sur. Rge.) **13W** Map No.
 Operator **C R A**
 Well No. **1** Farm **O'Dell**
 Elev. Location **SW SE SE**

330 Ft. From **S** Line **SE**
990 Ft. From **E** Line Quarter
 Ist. Report **JAN 5 1955**
 Completion
 Remarks **Co. tools**
 Spudding Date

Drig. Data
M I R

FABEN GILSTRAP

County **Stafford** State **Kansas**
 Sec. **7** (Blk. Twp.) **25** (Sur. Rge.) **13W** Map No.
 Operator **C R A**
 Well No. **1** Farm **O'Dell**
 Elev. **1958** Location **SW SE SE**

330 Ft. From **S** Line **SE**
990 Ft. From **E** Line Quarter
 Ist. Report
 Completion **MAR 30 1955**
 Remarks
 Co. tools
 Spudding Date **1-7-55**

Drig. Data **Oil well TD 4308**

8" @ 252 Heeb. 3504 Tor. 3521
Doug. 3542 Br. lime 3647 Lans. 3672
DST 3808-21 open 1 hr. gas in 30 min.
Rec. 195' gcm 1225# DST 3824-39
open 1 hr. gas in 45 min. Rec. 150' gcm
900# DST 3841-54 open 1 hr. Rec. 30'
socm 150# DST 3889-99 open 1 hr.
180' gas 30' ocm 30' hocm 950#
DST 3913-26 open 1 hr. Rec. 360' gas
40' ocm 380# Miss. 4020 DST 3928-46
open 1 hr. Rec. 20' vsocm 0# DST 4021
36 open 1 hr. Rec. 35' mud 0#
Viola 4107 DST 4109-56 open 1 hr.
Rec. 25' mud 0# Simp. sh. 4231

FABEN GILSTRAP

Drig. Data

Simp. sd. 4245 Arb. 4285 DST 4287-98
 open 1 hr. Rec. 2180' gas 1800' oil
 75' wtr. 750# TD 4308 5 @ 4307
 SCHLUMBERGER TOPS: Pierce Map
 Heeb. 3503 Tor. 5521 Dogg. 3541
 Br. lime 3646 Lens. 3672 MISS. 4016
 Kh. 4029 Viola 4091 Simp. sh. 4230
 Simp. sd. 4251 Arb. 4282 TD 4308
 CO to 4295 20/ 4284-89 FU 500' oil
 1 hr. S/ 45 bo 10 hr. P/ 20 bf 4 hr.
 50% wtr. P/ 40 bo 20% wtr. 24 hr.
 CO to 4295 20/ 4289-94 500 A
 S/ 3.42 boph P/ 50.40 bf 20% wtr.
 P/ 24.51 bf 38% wtr. P/ 10.44 bo 5.80 bw
 1000 A 5000 A P/ 34.80 bf 60% wtr.
 CO to 4307 40/ 4294-4304 1.40 bo
 3.51 bw SP 3955 40/ 3889-99 2 gwph
 2000 A P/ 109 bf 42% wtr. P/ 27.44 bo
 19.32 bw 24 hr. P/ 27 bo 16 bw 24 hr.
 Comp. 29 bopd 20% wtr.

