

WICHITA BRANCH

IMPORTANT
Kans. Geo. Survey request samples on this well.

KANSAS DRILLERS LOG

S. 20 T. 25 R. 14 ^E/_W
Loc. C SE NW
County Stafford

API No. 15 — 185 — 20,837
County Number

Operator Alpine Drilling Co., Inc. & Wheatland Oil & Gas, Inc.

Address 800 Bitting Building, Wichita, Kansas 67202

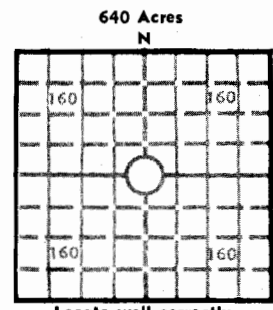
Well No. #1 Lease Name Bowden

Footage Location 660 feet from (N) ~~XXX~~ line 660 feet from ~~XXX~~ (W) line

Principal Contractor Husky Drilling Co., Inc. Geologist Jon T. Williams, Jr.

Spud Date 8-23-78 Total Depth 4270 P.B.T.D.

Date Completed 8-30-78 Oil Purchaser



Locate well correctly
Elev.: Gr. 1982
DF 1984 KB 1987

CASING RECORD

Report of all strings set — surface, intermediate, production, etc.

Purpose of string	Size hole drilled	Size casing set (in O.D.)	Weight lbs/ft.	Setting depth	Type cement	Sacks	Type and percent additives
Surface	12-1/4"	8-5/8	28#	306	common	275	2% gel, 3% cc

LINER RECORD

PERFORATION RECORD

Top, ft.	Bottom, ft.	Sacks cement	Shots per ft.	Size & type	Depth interval

TUBING RECORD

Size	Setting depth	Packer set at

ACID, FRACTURE, SHOT, CEMENT SQUEEZE RECORD

Amount and kind of material used	Depth interval treated

INITIAL PRODUCTION

Date of first production Producing method (flowing, pumping, gas lift, etc.)

RATE OF PRODUCTION PER 24 HOURS	Oil	Gas	Water	Gas-oil ratio
	bbls.	MCF	bbls.	CFPB

Disposition of gas (vented, used on lease or sold) Producing interval (s)

INSTRUCTIONS: As provided in KCC Rule 82-2-125, within 90 days after completion of a well, one completed copy of this Drillers Log shall be transmitted to the State Geological Survey of Kansas, 4150 Monroe Street, Wichita, Kansas 67209. Copies of this form are available from the Conservation Division, State Corporation Commission, 3830 So. Meridian (P.O. Box 17027), Wichita, Kansas 66217. Phone AC 316-522-2206. If confidential custody is desired, please note Rule 82-2-125. Drillers Logs will be on open file in the Oil and Gas Division, State Geological Survey of Kansas, Lawrence, Kansas 66044.

Operator ALPINE DRILLING & WHEATLAND OIL & GAS

DESIGNATE TYPE OF COMP.: OIL, GAS,
DRY HOLE, SWDW, ETC.: DRY HOLE

Well No. 1

Lease Name Bowden

S 20 T 25S R 14W E W

WELL LOG

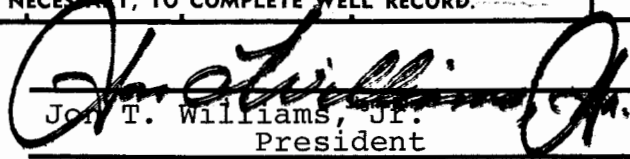
Show all important zones of porosity and contents thereof; cored intervals, and all drill-stem tests, including depth interval tested, cushion used, time tool open, flowing and shut-in pressures, and recoveries.

SHOW GEOLOGICAL MARKERS, LOGS RUN, OR OTHER DESCRIPTIVE INFORMATION.

FORMATION DESCRIPTION, CONTENTS, ETC.	TOP	BOTTOM	NAME	DEPTH
			Log Tops	
			Topeka	3157 -1170
			Heebner	3581 -1594
			Toronto	3602 -1615
			Douglas	3622 -1635
			Brown Lime	3724 -1737
			Lansing	3748 -1761
			B/Kansas City	4019 -2032
			Miss	4151 -2164
			Kinderhook	4188 -2201
			Viola	4246 -2259
			LTD	4257 -2270

USE ADDITIONAL SHEETS, IF NECESSARY, TO COMPLETE WELL RECORD.

Date Received



Jon T. Williams, Jr.
President

September 1, 1978

Date



20-25-14W

800 Biting Bldg
Wichita, Kansas 67202
Phone 316 - 263-7904
Mobile Phone 316 - 793-7859 Unit 7070

August 31, 1978

WELL LOG - - - - -BOWDEN NO. 1

Located: C SE NW of Sec. 20-25S-14W, Stafford
County, Kansas.

OWNER: Alpine Drilling & Wheatland Oil & Gas
ROTARY CONTRACTOR: Husky Drilling Co., Inc.

COMMENCED: 8-23-78
COMPLETED: 8-30-78

Rotary Total Depth: 4270

<u>LOG</u>	<u>CASING RECORD</u>
0 - 215 Sand & shale	Ran 7 jts, 8-5/8", 28#, 8V, Rge 3, used csg, tallied 299', set @ 306'KB w/275 sx common, 2% gel, 3% cc, plug down @ 4:45 p.m. 8-23-78 by Allied.
215 - 310 Red bed	
310 - 916 Red bed & sand	
916 - 932 Anhydrite	
932 - 2230 Shale & shells	
2230 - 3840 Shale & lime	
3840 - 3873 Lime	
3873 - 3925 Shale & lime	
3925 - 4075 Lime	
4075 - 4270 Lime & shale	Plugged 8-30-78