

IMPORTANT
 Kans. Geo. Survey request
 samples on this well.

15-185-20772

API No. 15 — 185 — 20,772
 County Number

S. 21 T. 25 R. 14 ^R _W
 Loc. NE NW NE
 County Stafford

Operator
Bankoff Oil Co.

Address
P. O. Drawer 2479 Tulsa, Oklahoma 74101

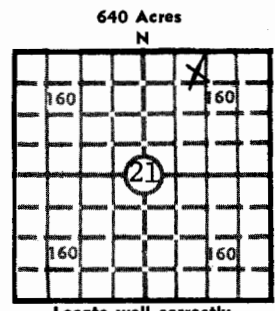
Well No. #1 Lease Name Wilson

Footage Location
330 feet feet from (N) ~~XX~~ line 990 feet from ~~XX~~ (W) line

Principal Contractor STERLING DRILLING COMPANY Geologist Lee H. Cornell

Spud Date 10/24/77 Total Depth 3700 feet P.B.T.D.

Date Completed 10/30/77 Oil Purchaser



Locate well correctly
 Elev.: Gr. 1971
 DF 1977 KB 1980

CASING RECORD

Report of all strings set— surface, intermediate, production, etc.

Purpose of string	Size hole drilled	Size casing set (in O.D.)	Weight lbs/ft.	Setting depth	Type cement	Sacks	Type and percent additives
Surface	12 1/4 in.	8 5/8	28 lb.	282 ft.	regular	225	10 % Gel

LINER RECORD

PERFORATION RECORD

Top, ft.	Bottom, ft.	Sacks cement	Shots per ft.	Size & type	Depth interval

TUBING RECORD

Size	Setting depth	Packer set at

ACID, FRACTURE, SHOT, CEMENT SQUEEZE RECORD

Amount and kind of material used	Depth interval treated

INITIAL PRODUCTION

Date of first production		Producing method (flowing, pumping, gas lift, etc.)			
RATE OF PRODUCTION PER 24 HOURS	Oil	Gas	Water	Gas-oil ratio	
	bbls.	MCF	bbls.		CFPB
Disposition of gas (vented, used on lease or sold)			Producing interval (s)		

INSTRUCTIONS: As provided in KCC Rule 82-2-125, within 90 days after completion of a well, one completed copy of this Drillers Log shall be transmitted to the State Geological Survey of Kansas, 4150 Monroe Street, Wichita, Kansas 67209. Copies of this form are available from the Conservation Division, State Corporation Commission, 3830 So. Meridian (P.O. Box 17027), Wichita, Kansas 66217. Phone AC 316-522-2206. If confidential custody is desired, please note Rule 82-2-125. Drillers Logs will be on open file in the Oil and Gas Division, State Geological Survey of Kansas, Lawrence, Kansas 66044.

Operator **BANKOFF OIL COMPANY** DESIGNATE TYPE OF COMP.: OIL, GAS, DRY HOLE, SWDW, ETC.:

Well No. #1 Lease Name **WILSON** DRY HOLE


S 21 T 25 R 14 E W

WELL LOG
 Show all important zones of porosity and contents thereof; cored intervals, and all drill-stem tests, including depth interval tested, cushion used, time tool open, flowing and shut-in pressures, and recoveries. SHOW GEOLOGICAL MARKERS, LOGS RUN, OR OTHER DESCRIPTIVE INFORMATION.

FORMATION DESCRIPTION, CONTENTS, ETC.	TOP	BOTTOM	NAME	DEPTH
Anhydrite	848	+1137		
Tarkio L.S.	2866	- 886		
Elmont L.S.	2920	- 940		
Howard	3077	-1097		
Topeka	3159	-1179		
King Hill sh.	3360	-1380		
Queen Hill sh.	3466	-1486		
Heebner	3564	-1584		
Toronto	3590	-1611		
Douglas sh.	3615	-1626		
Total Depth	3700	-1720		

USE ADDITIONAL SHEETS, IF NECESSARY, TO COMPLETE WELL RECORD.

Date Received _____


 Signature
 Co-Partner
 Title
 11/15/77
 Date