

WELL LOG BUREAU—KANSAS GEOLOGICAL SOCIETY
508 East Murdock,

Wichita, Kansas

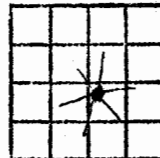
4-25-32W

Company- MAGNOLIA PETRO. CO.
Farm- Celona O. Hicks No. 1

SEC. 4 T. 25 R. 32W
NW NW SE

Total Depth. 2750 PB 2727
Comm. 5-5-52 Comp. 6-5-52
Shot or Treated.
Conventor. Ben. F. Brack Oil Co.
Issued. 8-9-52

County Finney KANSAS



CASING:

10 3/4" 919' cem. w/500 sx
6 5/8" 2747' cem. w/1000 sx

Elevation. 2883 DF

Production. 4,090,000 Gas
RP 409#

Figures indicate Bottom of Formations.

sand	128
shale & shells	825
shale	910
red bed	1250
anhydrite	1290
shale & shells	1415
shale & sand	1435
shale & salt	1875
shale	1880
shale & shells	2185
shale & lime	2574
shale & sand	2630
shale & lime	2750
Total Depth	

Tops:	
Krider	2564
Winfield	2620
Towanda	2680
Ft. Riley	2743

PB 2727, perf. 2680-94' w/48
sh., VSSG, Acidized w/1000
gals. SSG, acidized w/6000
gals. SSG. Set plug 2655, perf
2622-50' w/120 sh., NS
acidized w/1000 gals. VSSG,
Acidized w/6000 gals., test
70 MCF

Drlg plug, set plug 2608 perf.
2590-2606 & 2570-86 w/120 sh.,
NSG Acidized w/1000 gals. GSG,
acidized w/6000 gals. test 371
MCF. Drld plug

KANSAS DRILLERS LOG

State Geological Survey

WICHITA BRANCH

S. 4 T 25S R. 32 ~~XX~~ W

API No. 15 _____ County _____ Number NA

Loc. NW NW SE

County Finney

Operator
Mobil Oil Corporation

Address
P.O. Box 5444, Denver, CO 80217

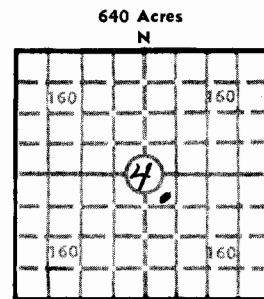
Well No. 1 Lease Name
Celona O Hicks

Footage Location
2310 feet from (X) (S) line 2310 feet from (E) (Y) line

Principal Contractor
Ben F. Brack Oil Co., Inc. Geologist _____

Spud Date
5/4/52 Total Depth
2750 P.B.T.D.
2727

Date Completed
6/8/52 Oil Purchaser GAS
Kansas/Nebraska Natural Gas Co.



Elev.: Gr. 2880

DF 2883 KB 2885

CASING RECORD

Report of all strings set— surface, intermediate, production, etc.

Purpose of string	Size hole drilled	Size casing set (in O.D.)	Weight lbs/ft.	Setting depth	Type cement	Sacks	Type and percent additives
Surface Casing	13-3/4"	10-3/4"	28.52	920	Regular	500	
Production Casing	9	6-5/8"	19.50	2748	Regular	1000	

LINER RECORD

PERFORATION RECORD

Top, ft.	Bottom, ft.	Sacks cement	Shots per ft.	Size & type	Depth interval
			4		2570-2586
TUBING RECORD			4		2590-2606
			4		2622-50
Size	Setting depth	Packer set at	4		2680-94

ACID, FRACTURE, SHOT, CEMENT SQUEEZE RECORD

Amount and kind of material used	Depth interval treated
21,000 gal. w/15% acid	2570-2694

INITIAL PRODUCTION

Date of first production <u>11-52</u>	Producing method (flowing, pumping, gas lift, etc.) <u>Pumping</u>
RATE OF PRODUCTION PER 24 HOURS	Oil _____ Gas <u>1400</u> MCF _____ Water _____ Gas-oil ratio _____ CFPB _____
Disposition of gas (vented, used on lease or sold) <u>Sold</u>	Producing interval (s) <u>2570-2694</u>

INSTRUCTIONS: As provided in KCC Rule 82-2-125, within 90 days after completion of a well, one completed copy of this Drillers Log shall be transmitted to the State Geological Survey of Kansas, 4150 Monroe Street, Wichita, Kansas 67209. Copies of this form are available from the Conservation Division, State Corporation Commission, 3830 So. Meridian (P.O. Box 17027), Wichita, Kansas 66217. Phone AC 316-522-2206. If confidential custody is desired, please note Rule 82-2-125. Drillers Logs will be on open file in the Oil and Gas Division, State Geological Survey of Kansas, Lawrence, Kansas 66044.

Operator Mobil Oil Corporation
 DESIGNATE TYPE OF COMP.: OIL, GAS, DRY HOLE, SWDW, ETC.:

Well No. 1 Lease Name Celona O. Hicks Gas

s 4 T 25S R 32 K W

WELL LOG

Show all important zones of porosity and contents thereof; cored intervals, and all drill-stem tests, including depth interval tested, cushion used, time tool open, flowing and shut-in pressures, and recoveries.

SHOW GEOLOGICAL MARKERS, LOGS RUN, OR OTHER DESCRIPTIVE INFORMATION.

FORMATION DESCRIPTION, CONTENTS, ETC.	TOP	BOTTOM	NAME	DEPTH
Sand	0	285		
Shale-Shells	285	595	KRIDER	2564
Shale	595	825	WINFIELD	2620
Shale-Shells	825	910	TOWANDA	2680
Red Bed	910	1250	FT. RILEY	2743
Anhydrite	1250	1290		
Shale & Shells	1290	1415		
Shale & Sand	1415	1435		
Shale-Salt	1435	1875		
Shale & Shells	1875	2185		
Shale-Lime	2185	2370		
Lime & Shale	2370	2430		
Shale-Lime	2430	2485		
Lime & Shale	2485	2574		
Shale-Sand	2574	2630		
Lime & Shale	2630	2712		
Sand-Shale	2712	2750		
TOTAL DEPTH:		2750		

USE ADDITIONAL SHEETS, IF NECESSARY, TO COMPLETE WELL RECORD.

Date Received

J. C. Sullivan C. J. PARK
 Signature
 PRODUCING ACCOUNTING SUPERVISOR
 Title
 1-17-80
 Date