

WICHITA BRANCH

S. 29 T. 25 R. 34 E. W

WELL COMPLETION REPORT AND
DRILLER'S LOG

API No. 15 — 055 — 20,438
County Number

Loc. C NW/4

County Finney

Operator Mobil Oil Corporation

Address P.O. Box 5444 Denver, CO 80217

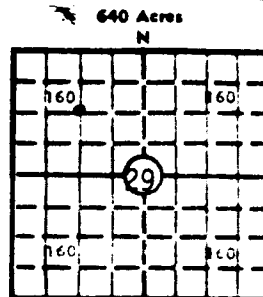
Well No. 16 Lease Name Brown No. 15

Footage Location 1250 feet from (N) (S) line 1300 feet from (E) (W) line

Principal Contractor Wakefield Drilling Co. Geologist V. C. Andresen

Spud Date 1-2-81 Date Completed 1-24-81 Total Depth 3000 P.B.T.D. 2982

Operational Deviation Oil and/or Gas Purchaser Northern Natural Gas



Elev.: Gr. 2979

DF KB 2987

CASING RECORD

Report of all strings set — surface, intermediate, production, etc.

| Purpose of string | Size hole drilled | Size casing set (in O.D.) | Weight lbs/ft. | Setting depth | Type cement | Sacks | Type and percent additives |
|-------------------|-------------------|---------------------------|----------------|---------------|-------------|-------|--------------------------------|
| Surface Casing | 12 1/2" | 8-5/8" | 24# | 825 | Class H Reg | 250 | 12% gel + 3% CaCl ₂ |
| | | | | | Class H Reg | 150 | 3% CaCl ₂ |
| Production Casing | 7-7/8" | 5 1/2" | 14# | 3000 | Howco Lite | 500 | 1/4# Flocel |
| | | | | | Class H Reg | 150 | 18% NaCl + .75% CFR2 |

LINER RECORD

PERFORATION RECORD

| Top, ft. | Bottom, ft. | Sacks cement | Shots per ft. | Size & type |
|----------|-------------|--------------|---------------|-------------|
| | | | 2 | 2791-2798 |
| | | | 2 | 2803-2808 |
| | | | 2 | 2811-2819 |
| | | | 2 | 2821-2830 |
| | | | 2 | 2834-2836 |
| | | | 2 | 2842-2847 |

ACID, FRACTURE, SHOT, CEMENT SQUEEZE RECORD

| Amount and kind of material used | Depth interval treated |
|--|------------------------|
| 1500 gals of MOD 202 acid + 75 ball sealers | 2791-2847 |
| 68,000 gals of fresh gelled H ₂ O + 24,000 # of 20-40 frac sand | |
| + additives | |

INITIAL PRODUCTION

| | |
|---|--|
| Date of first production awaiting connection | Producing method (flowing, pumping, gas lift, etc.) pumping |
| RATE OF PRODUCTION PER 24 HOURS | Oil Gas Water Gas-oil ratio |
| | bbis. N/A 4/7/81 MCF bbis. CFPB |
| Disposition of gas (vented, used on lease or sold) awaiting connection | Producing interval(s) 2791-2847 |
| | 3120 per mobil letter 9-25-1981 |

INSTRUCTIONS: As provided in KCC Rule 82-2-125, within 90 days after completion of a well, one completed copy of this Drillers Log shall be transmitted to the State Geological Survey of Kansas, 4150 Monroe Street, Wichita, Kansas 67209. Copies of this form are available from the Conservation Division, State Corporation Commission, 245 No. Water, Wichita, Kansas 67202. Phone AC 316-522-2206. If confidential custody is desired, please note Rule 82-2-125. Drillers Logs will be on open file in the Oil and Gas Division, State Geological Survey of Kansas, Lawrence, Kansas 66044.

| | | |
|-----------------------------------|---------------------------------|--|
| Operator Mobil Oil Corporation | | DESIGNATE TYPE OF COMP.: OIL, GAS, DRY HOLE, SWDW, ETC.: Gas |
| Well No. 16 | Lease Name Brown No. 15 Unit | |
| S 29 T 25 R 34 W | | |

WELL LOG

Show all important zones of porosity and contents thereof; cored intervals, and all drill-stem tests, including depth interval tested, cushion used, time tool open, flowing and shut-in pressures, and recoveries.

SHOW GEOLOGICAL MARKERS, LOGS RUN, OR OTHER DESCRIPTIVE INFORMATION.

| FORMATION DESCRIPTION, CONTENTS, ETC. | TOP | BOTTOM | NAME | DEPTH |
|---------------------------------------|------|--------|---------------|-------|
| Sand | 0 | 46 | Stone Corral | 1811 |
| Sand, Clay & Blue Shale | 46 | 785 | | |
| Red Bed | 785 | 950 | Chase | 2500 |
| Red Bed & Gyp | 950 | 1405 | | |
| Sand | 1405 | 1545 | Council Grove | 2784 |
| Shale & Gyp | 1545 | 1830 | | |
| Shale & Anhydrite | 1830 | 1905 | | |
| Lime & Shale | 1905 | 2080 | | |
| Shale | 2080 | 2315 | | |
| Shale & Lime | 2315 | 2720 | | |
| Lime & Shale | 2720 | 3000 | | |
| R.T.D. | | 3000 | | |

USE ADDITIONAL SHEETS, IF NECESSARY, TO COMPLETE WELL RECORD.

| | |
|---------------|---------------------------------|
| Date Received | C.J. PARK |
| | <i>C.J. Park</i> Signature |
| | PRODUCING ACCOUNTING SUPERVISOR |
| | Title |
| | 4-7-81 Date |

561425

Mobil Oil Corporation

P.O. BOX 5444
DENVER, COLORADO 80217

September 25, 1981

Kansas State Corporation Commission
Conservation Division
200 Colorado Derby Bldg.
202 West First Street
Wichita, Kansas 67202

Attn: Allaweas Winfrey

Gentlemen:

As stated in our letter dated June 2, 1981, we are forwarding to you Four Point Flow Potential Test results for the Kansas gas wells listed below. Kansas C-10 Completion reports were submitted for these wells at an earlier date, however, the test results were not available to us in enough time to comply with KCC Rule 82-2-125.

| <u>Lease Name</u> | <u>Well #</u> | <u>S-T-R</u> | <u>Test Results</u> |
|---------------------|---------------|--------------|---------------------|
| O. M. Akers Unit | 2 | 35-25S-35W | 1200 mcfd |
| — Brown 15 Unit | 16 | 29-25S-34W | 3120 " |
| Brown 19 Unit | 20 | 31-25S-34W | 1840 " |
| C. A. Loucks Unit B | 2 | 28-25S-35W | 1030 " |
| Tate Holdridge Unit | 2 | 21-25S-35W | 1480 " |
| Tate White Unit | 2 | 27-25S-35W | 810 " |
| Ward Tate Unit | 2 | 33-25S-35W | 1030 " |
| Mann #1 Unit | 2 | 1-33S-36W | 2300 " |

WELL COMPLETION REPORT AND DRILLER'S LOG

API No. 15 — 055 — 20,438
County Number

Operator
 Mobil Oil Corporation

Address
 P.O. Box 5444 Denver, CO 80217

Well No. 16 Lease Name Brown No. 15

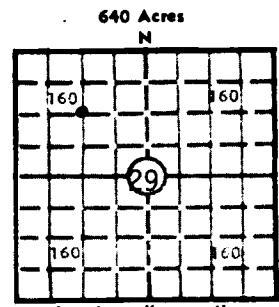
Footage Location
1320 feet from (N) (S) X line 1320 feet from (E) (W) X line

Principal Contractor Wakefield Drilling Co. Geologist V. C. Andresen

Start Date 1-2-81 Date Completed 1-24-81 Total Depth 3000 P.B.T.D. 2982

Directional Deviation _____ Oil and/or Gas Purchaser Northern Natural Gas

State Geological Survey
 S. 29A, T. 25 N, R. 34 E
 Loc. C NW/4
 County Finney



Elev.: Gr. 2979
 DF _____ KB 2987

CASING RECORD

Report of all strings set — surface, intermediate, production, etc.

| Purpose of string | Size hole drilled | Size casing set (in O.D.) | Weight lbs/ft. | Setting depth | Type cement | Sacks | Type and percent additives |
|-------------------|-------------------|---------------------------|----------------|---------------|-------------|-------|--------------------------------|
| Surface Casing | 12 1/4" | 8-5/8" | 24# | 825 | Class H Reg | 250 | 12% gel + 3% CaCl ₂ |
| | | | | | Class H Reg | 150 | 3% CaCl ₂ |
| Production Casing | 7-7/8" | 5 1/2" | 14# | 3000 | Howco Lite | 500 | 1/4# floccle |
| | | | | | Class H Reg | 150 | 18% NaCl + .75% CFR2 |

LINER RECORD

PERFORATION RECORD

| Top, ft. | Bottom, ft. | Sacks cement | Shots per ft. | Size & type | Depth interval |
|----------|-------------|--------------|---------------|-------------|----------------|
| | | | 2 | | 2791-2803 |
| | | | 2 | | 2803-2808 |
| | | | 2 | | 2811-2819 |
| | | | 2 | | 2821-2830 |
| | | | 2 | | 2834-2836 |
| | | | 2 | | 2842-2847 |

TUBING RECORD

| Size | Setting depth | Packer set at | Shots per ft. | Size & type | Depth interval |
|--------|---------------|---------------|---------------|-------------|----------------|
| 2-3/8" | 2869 | | 2 | | 2834-2836 |
| | | | 2 | | 2842-2847 |

ACID, FRACTURE, SHOT, CEMENT SQUEEZE RECORD

| Amount and kind of material used | Depth interval treated |
|--|------------------------|
| 5500 gals of MOD 202 acid + 75 ball sealers | 2791-2847 |
| 68,000 gals of fresh gelled H ₂ O + 24,000 # of 20-40 frac sand | |
| + additives | |

INITIAL PRODUCTION

| | | | | | |
|--|---|--|-------|---------------|------|
| Date of first production <u>awaiting connection</u> | Producing method (flowing, pumping, gas lift, etc.) <u>pumping</u> | | | | |
| RATE OF PRODUCTION PER 24 HOURS | Oil | Gas | Water | Gas-oil ratio | |
| | bbis. | 3120 | MCf | bbis. | CFPB |
| Disposition of gas (vented, used on lease or sold) <u>awaiting connection</u> | <u>Per mobile letter 9-25-1981</u> | Producing interval (s) <u>2791-2847</u> | | | |

INSTRUCTIONS: As provided in KCC Rule 82-2-125, within 90 days after completion of a well, one completed copy of this Drillers Log shall be transmitted to the State Geological Survey of Kansas, 4150 Monroe Street, Wichita, Kansas 67209. Copies of this form are available from the Conservation Division, State Corporation Commission, 245 No. Water, Wichita, Kansas 67202. Phone AC 316-522-2206. If confidential custody is desired, please note...

Operator
Mobil Oil Corporation

DESIGNATE TYPE OF COMP.: OIL, GAS,
DRY HOLE, SWDW, ETC.:
Gas

Well No. 16 Lease Name Brown No. 15 Unit

S 29 T 25 R 34 E W

WELL LOG

Show all important zones of porosity and contents thereof; cored intervals, and all drill-stem tests, including depth interval tested, cushion used, time tool open, flowing and shut-in pressures, and recoveries.

SHOW GEOLOGICAL MARKERS, LOGS RUN, OR OTHER DESCRIPTIVE INFORMATION.

| FORMATION DESCRIPTION, CONTENTS, ETC. | TOP | BOTTOM | NAME | DEPTH |
|---------------------------------------|------|--------|---------------|-------|
| Sand | 0 | 46 | Stone Corral | 1811 |
| Sand, Clay & Blue Shale | 46 | 785 | | |
| Red Bed | 785 | 950 | Chase | 2500 |
| Red Bed & Gyp | 950 | 1405 | Council Grove | 2784 |
| Sand | 1405 | 1545 | | |
| Shale & Gyp | 1545 | 1830 | | |
| Shale & Anhydrite | 1830 | 1905 | | |
| Lime & Shale | 1905 | 2080 | | |
| Shale | 2080 | 2315 | | |
| Shale & Lime | 2315 | 2720 | | |
| Lime & Shale | 2720 | 3000 | | |
| R.T.D. | | 3000 | | |

USE ADDITIONAL SHEETS, IF NECESSARY, TO COMPLETE WELL RECORD.

| | | |
|---------------|-------------------|---------------------------------|
| Date Received | <i>C. J. Park</i> | C. J. PARK |
| | | Signature |
| | | PRODUCING ACCOUNTING SUPERVISOR |
| | | Title |
| | 3-27-81 | Date |

56165

KANSAS DRILLER'S LOG

State Geologist's Office
Geological Survey of Kansas

LEASE: BROWN No. 15 FARM #16
OWNER: MOBIL OIL CORPORATION
SPUD: 1-02-81
COMP: 1-06-81

LOCATION: NW/4
SECTION 29-25S-34W
FINNEY COUNTY, KANSAS
CASING: 8 5/8" SET @ 825'
5 1/2" SET @ 3000'

| | |
|-------------------------|------|
| Sand | 46 |
| Sand, Clay & Blue Shale | 785 |
| Red Bed | 950 |
| Red Bed & Gyp | 1405 |
| Sand | 1545 |
| Shale & Gyp | 1830 |
| Shale & Anhydrite | 1905 |
| Lime & Shale | 2080 |
| Shale | 2315 |
| Shale & Lime | 2720 |
| Lime & Shale | 3000 |
| R.T.D. | 3000 |

RECEIVED
FEB - 2 1981
CONSERVATION DIVISION
LAWRENCE, KANSAS

STATE OF KANSAS: s.s.

I, William C. Wakefield, do hereby certify that this is a true and correct Driller's Log on the BROWN No. 15 FARM #16, located NW/4 SECTION 29-25S-34W, Finney County, Kansas, as shown by the daily drilling reports.

EARL F. WAKEFIELD, INC.