

State Geological Survey

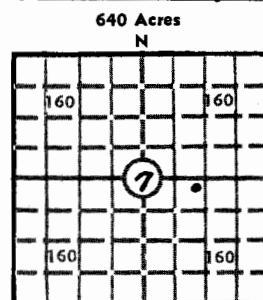
WICHITA, BRANCH

KANSAS DRILLERS LOG

API No. 15 — 093 — 20,251
County Number

Operator Amoco Production Company		
Address P. O. Box 432 - Liberal, Kansas 67901		
Well No. 2	Lease Name R. T. Beaty	
Footage Location 2590 feet from (■) (S) line 1550 feet from (E) (▼) line		
Principal Contractor Service Drilling Company		Geologist
Spud Date 12-8-75	Total Depth 2762	P.B.T.D. 2758
Date Completed 1-9-76	Oil Purchaser	

S. 7 T. 25S R. 38 W
Loc. 2590' FSL & 1550' FEL
County Kearny



Locate well correctly

Elev.: Gr. 3146'
DF KB 3153'

CASING RECORD

Report of all strings set — surface, intermediate, production, etc.

Purpose of string	Size hole drilled	Size casing set (in O.D.)	Weight lbs/ft.	Setting depth	Type cement	Sacks	Type and percent additives
Surface	12-1/4	8-5/8	24.00	552	Class "H"	385	3% CACL
Production	7-7/8	5-1/2	14.00	2762	Special	800	18% CACL

LINER RECORD

PERFORATION RECORD

Top, ft.	Bottom, ft.	Sacks cement	Shots per ft.	Size & type	Depth interval
			2	1/2	2577-90, 2595-99
TUBING RECORD					2603-07, 2612-21
					2627-31, 2639-44
					2652-63

ACID, FRACTURE, SHOT, CEMENT SQUEEZE RECORD

Amount and kind of material used	Depth interval treated
Acidized with 2500 gals. 15% HCl. Fraced with 100,000 gals. treated water and 200,000# river sand.	2577 - 2663'

INITIAL PRODUCTION

Date of first production 1-9-76		Producing method (flowing, pumping, gas lift, etc.) Flowing			
RATE OF PRODUCTION PER 24 HOURS	Oil bbls.	Gas 6,800 MCF	Water bbls.	Gas-oil ratio	CFPB
Disposition of gas (vented, used on lease or sold) Waiting on pipeline connection			Producing interval (s) 2577 - 2663'		

INSTRUCTIONS: As provided in KCC Rule 82-2-125, within 90 days after completion of a well, one completed copy of this Drillers Log shall be trans-
mitted to the State Geological Survey of Kansas, 4150 Monroe Street, Wichita, Kansas 67209. Copies of this form are available from the Conservation
Division, State Corporation Commission, 3830 So. Meridian (P.O. Box 17027), Wichita, Kansas 66217. Phone AC 316-522-2206. If confidential custody
is desired, please note Rule 82-2-125. Drillers Logs will be on open file in the Oil and Gas Division, State Geological Survey of Kansas, Lawrence, Kansas
66044.

Operator Amoco Production Company		DESIGNATE TYPE OF COMP.: OIL, GAS, DRY HOLE, SWDW, ETC.: Gas
Well No. 2	Lease Name R. T. Beaty	
S 7 T 25 R 38 W		

WELL LOG

Show all important zones of porosity and contents thereof; cored intervals, and all drill-stem tests, including depth interval tested, cushion used, time tool open, flowing and shut-in pressures, and recoveries.

SHOW GEOLOGICAL MARKERS, LOGS RUN, OR OTHER DESCRIPTIVE INFORMATION.

FORMATION DESCRIPTION, CONTENTS, ETC.	TOP	BOTTOM	NAME	DEPTH
Sand	0	74	Gamma-Neutron	1256-2756'
Sand, Rocks, Red Bed	74	436		
Sand, Red Bed	436	552		
Red Bed, Sand, Lime	552	768		
Red Bed, Sand	768	1155		
Sand, Gyps.	1155	1610		
Lime, Anhydrite, Shale	1610	1873		
Shale, Lime	1873	2762		
TD	2762			

USE ADDITIONAL SHEETS, IF NECESSARY, TO COMPLETE WELL RECORD.

Date Received	<i>Gale McCord</i>	Gale McCord
	Signature	
	Administrative Assistant	
	Title	
	1-20-76	
	Date	