

IMPORTANT
Kans. Geo. Survey request
samples on this well.

API No. 15 — 075 — 20,079
County Number

Operator
CIG Exploration, Inc.

Address 415 West 8th, Suite 300, Amarillo, Texas 79101

Well No. # 1 Lease Name M Wilhite

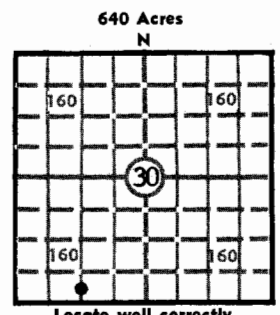
Footage Location
330 feet from XX (S) line 1320 feet from XXX (W) line

Principal Contractor Murfin Drilling Company Geologist Ben Gray

Spud Date 8/6/74 Total Depth 5579 P.B.T.D. P&A

Date Completed 8/26/74 Oil Purchaser

S. 30 T. 25 R. 42 E
W
Loc. 1320 FWL 330 FSL
County Hamilton



Locate well correctly
Elev.: Gr. 3465
DF _____ KB _____

CASING RECORD

Report of all strings set — surface, intermediate, production, etc.

Purpose of string	Size hole drilled	Size casing set (in O.D.)	Weight lbs/ft.	Setting depth	Type cement	Sacks	Type and percent additives
Surface	12-1/4	8-5/8	20-24	808	Howcolite Class H	350 150	2% CaCl ₂ 3% CaCl ₂

LINER RECORD

PERFORATION RECORD

Top, ft.	Bottom, ft.	Sacks cement	Shots per ft.	Size & type	Depth interval

TUBING RECORD

Size	Setting depth	Packer set at

ACID, FRACTURE, SHOT, CEMENT SQUEEZE RECORD

Amount and kind of material used	Depth interval treated

INITIAL PRODUCTION

Date of first production <u>None P&A</u>		Producing method (flowing, pumping, gas lift, etc.)			
RATE OF PRODUCTION PER 24 HOURS	Oil bbls.	Gas MCF	Water bbls.	Gas-oil ratio CFPB	Producing interval (s)
Disposition of gas (vented, used on lease or sold)					

INSTRUCTIONS: As provided in KCC Rule 82-2-125, within 90 days after completion of a well, one completed copy of this Drillers Log shall be transmitted to the State Geological Survey of Kansas, 4150 Monroe Street, Wichita, Kansas 67209. Copies of this form are available from the Conservation Division, State Corporation Commission, 3830 So. Meridian (P.O. Box 17027), Wichita, Kansas 66217. Phone AC 316-522-2206. If confidential custody is desired, please note Rule 82-2-125. Drillers Logs will be on open file in the Oil and Gas Division, State Geological Survey of Kansas, Lawrence, Kansas 66044.

Operator CIG Exploration, Inc. DESIGNATE TYPE OF COMP.: OIL, GAS, DRY HOLE, SWDW, ETC.: Dry Hole

Well No. 1 Lease Name Wilhite

s 30 T 25 R 42 ^{XX} W

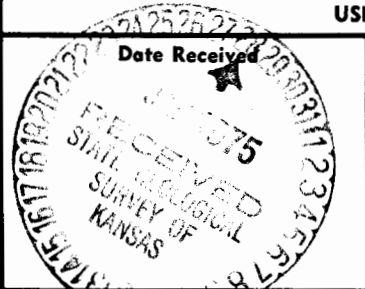
WELL LOG

Show all important zones of porosity and contents thereof; cored intervals, and all drill-stem tests, including depth interval tested, cushion used, time tool open, flowing and shut-in pressures, and recoveries.

SHOW GEOLOGICAL MARKERS, LOGS RUN, OR OTHER DESCRIPTIVE INFORMATION.

FORMATION DESCRIPTION, CONTENTS, ETC.	TOP	BOTTOM	NAME	DEPTH
<p><u>DST #1</u> IF 1 hr. ISI 1 hr. FF 1-1/2 hrs. FSI 2 hrs. IHP 2787 psi. IFP 33-83 psi. ISIP 1183 psi. FFP 116-165 psi. FSIP 1232 psi. FHP 2787 psi. Temp 138° F. Rec. 180' drlg mud. 210' muddy wtr.</p>	5168	5190	Winfield Council Grove Lansing Marmaton Cherokee Morrow Keyes	2267 2684 3652 4218 4400 4871 5124
<p><u>DST #2</u> IF 45 min-wk blow, dead in 2 min. Opened bypass @ 10 min & 25 min. Dead. ISI 90 min. FF 45 min-dead. FSI 90 min.</p>	5246	5268	Miss. TD	5300 5579
<p><u>DST #3</u> IF 30 min-weak blow inc to strong blow. ISI 60 min. FF 60 min-str steady blow. FSI 120 min. IFP 133-426 psi. ISIP 1262 psi. FFP 426-837 psi. FSIP 1262 psi. IHP 2457 psi. FHP 2457 psi. Temp 118 F. Rec. 1740' SW.</p>	5228	5268		

USE ADDITIONAL SHEETS, IF NECESSARY, TO COMPLETE WELL RECORD.



J.D. Stewart, Jr. *J.D. Stewart Jr.*
 Sr. Engineer Signature
 Title
 1/14/75
 Date

Wichita, ~~WES~~ WELL LOG

30-25-42W

COMPANY CIG Exploration, Inc.

SEC. 30 T. 25S R. 42W

FARM M. Wilhite NO. 1

LOC. 1320' FWL & 330' FSL

RID. NO. 14

API# 15-075-20,079

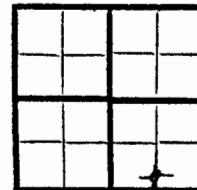
TOTAL DEPTH 5570'

COUNTY Hamilton
KANSAS

COMM. 8-6-74

COMP. 8-26-74

CONTRACTOR Murfin Drilling Company



CASING

20	10
15	8 5/8" @ 818' w/500 sx
12	6
13	5

ELEVATION 3465 KB

PRODUCTION D & A

FIGURES INDICATE BOTTOM OF FORMATIONS

1505	Shale & sand
1818	Red bed
5045	Lime & shale
5165	Shale
5375	Lime & shale
5480	Lime
5530	Lime & shale
5570	Lime
5570	TD

LOG TOPS

WINF	2267
CO GR	2684
IANS	3652
MARM	4218
CHER	4400
MRW	4871
KEYES	5124
MISS	5300
LTD	5570

1501531017