

TRILOBITE TESTING, INC.

DRILL STEM TEST REPORT

Unit Petroleum Co

16-26s-10w Reno

8200 South Unit Drive
Tulsa Ok 74132

Geesling 16#1HXL

ATTN: AlexVandenburgSteveG

Job Ticket: 63088

DST#: 1

Test Start: 2017.10.11 @ 20:50:41

GENERAL INFORMATION:

Formation: **Miss**

Deviated: No Whipstock: ft (KB)

Time Tool Opened: 23:55:21

Time Test Ended: 05:41:21

Test Type: Conventional Bottom Hole (Initial)

Tester: Ray Schwager

Unit No: 77

Interval: 3944.00 ft (KB) To 4160.00 ft (KB) (TVD)

Reference Elevations: 1754.00 ft (KB)

Total Depth: 4160.00 ft (KB) (TVD)

1738.00 ft (CF)

Hole Diameter: 8.75 inches Hole Condition: Fair

KB to GR/CF: 16.00 ft

Serial #: 8360 Inside

Press@RunDepth: 224.89 psig @ 3947.00 ft (KB)

Capacity: 8000.00 psig

Start Date: 2017.10.11

End Date: 2017.10.12

Last Calib.: 2017.10.12

Start Time: 20:50:41

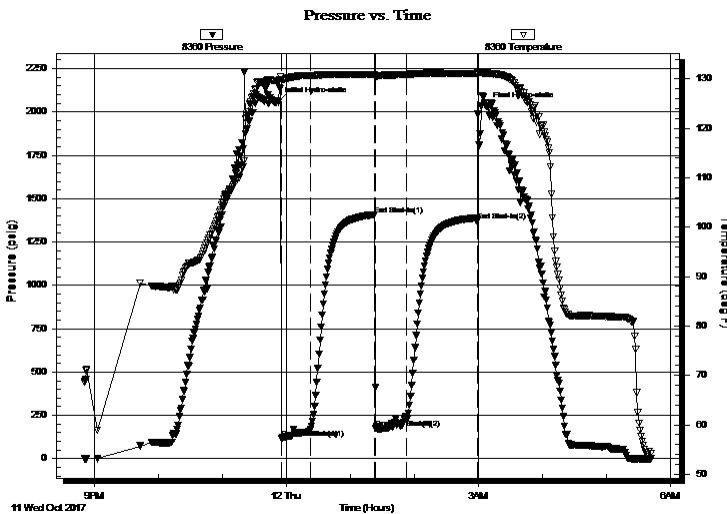
End Time: 05:41:21

Time On Btm: 2017.10.11 @ 23:52:21

Time Off Btm: 2017.10.12 @ 03:07:35

TEST COMMENT: 30-IFP-no bl
60-ISIP-no bl
30-FFP-no bl
60-FSIP-no bl

PRESSURE SUMMARY



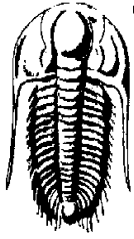
Time (Min.)	Pressure (psig)	Temp (deg F)	Annotation
0	2057.47	129.66	Initial Hydro-static
3	118.82	129.91	Open To Flow (1)
30	166.70	130.67	Shut-In(1)
91	1408.89	130.88	End Shut-In(1)
92	173.83	130.53	Open To Flow (2)
121	224.89	130.92	Shut-In(2)
187	1374.09	131.08	End Shut-In(2)
196	2030.95	131.16	Final Hydro-static

Recovery

Length (ft)	Description	Volume (bbl)
150.00	Mud	1.63

Gas Rates

Choke (inches)	Pressure (psig)	Gas Rate (Mcf/d)



**TRILOBITE
TESTING, INC.**

DRILL STEM TEST REPORT

FLUID SUMMARY

Unit Petroleum Co

16-26s-10w Reno

8200 South Unit Drive
Tulsa Ok 74132

Geesling 16#1HXL

Job Ticket: 63088

DST#: 1

ATTN: AlexVandenburgSteveG

Test Start: 2017.10.11 @ 20:50:41

Mud and Cushion Information

Mud Type: Gel Chem

Cushion Type:

Oil API:

deg API

Mud Weight: 9.00 lb/gal

Cushion Length:

ft

Water Salinity:

ppm

Viscosity: 57.00 sec/qt

Cushion Volume:

bbbl

Water Loss: 6.40 in³

Gas Cushion Type:

Resistivity: ohm.m

Gas Cushion Pressure:

psig

Salinity: 4300.00 ppm

Filter Cake: 1.00 inches

Recovery Information

Recovery Table

Length ft	Description	Volume bbl
150.00	Mud	1.626

Total Length: 150.00 ft Total Volume: 1.626 bbl

Num Fluid Samples: 0

Num Gas Bombs: 0

Serial #:

Laboratory Name:

Laboratory Location:

Recovery Comments: Flushed tool 1st open

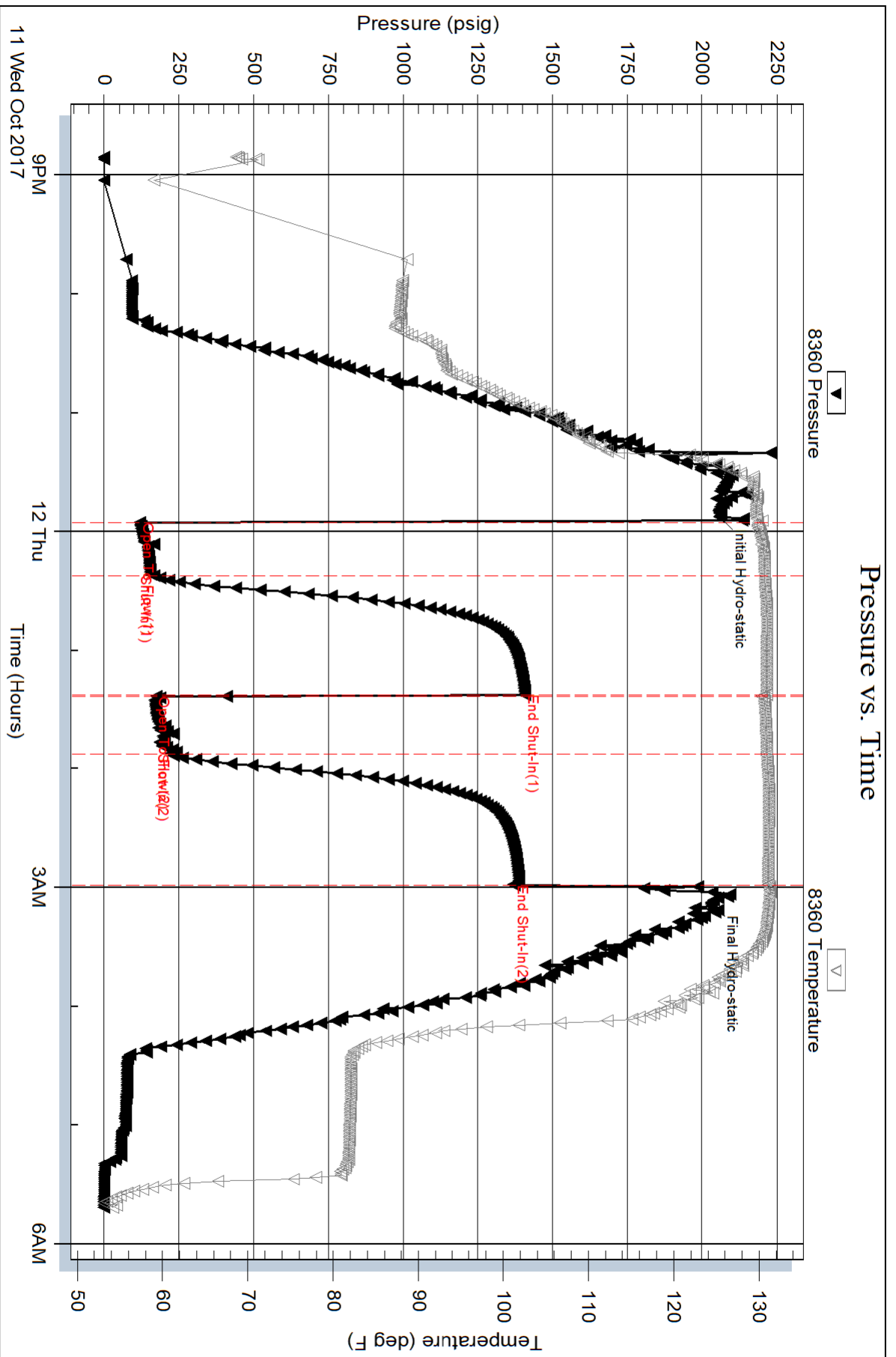
Serial #: 8360

Inside

Unit Petroleum Co

Geesling 16#1HXL

DST Test Number: 1

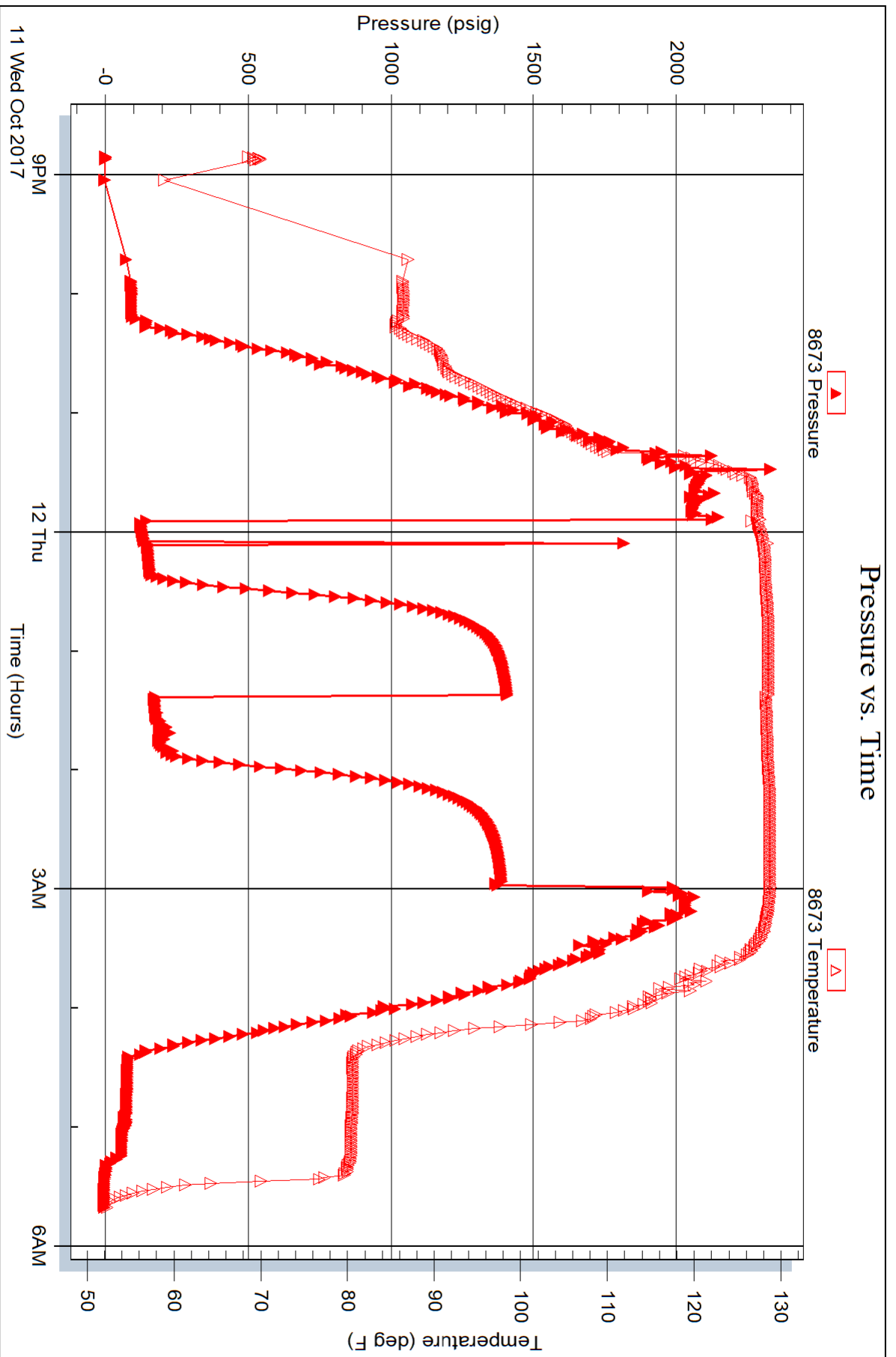


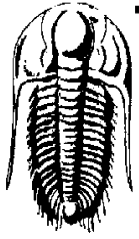
Serial #: 8673

Outside Unit Petroleum Co

Geesling 16#1HXL

DST Test Number: 1





**TRILOBITE
TESTING, INC.**

DRILL STEM TESTING - DATA LISTING

Unit Petroleum Co

16-26s-10w Reno

8200 South Unit Drive
Tulsa Ok 74132

Geesling 16#1HXL

Job Ticket: 63088

DST#: 1

ATTN: AlexVandenburgSteveG

Test Start: 2017.10.11 @ 20:50:41

Serial # 8360 Inside				Serial # 8360 Inside			
Comments	Time (Min.)	Pressure (psig)	Temp. (deg F)	Comments	Time (Min.)	Pressure (psig)	Temp. (deg F)
	0.0	-0.17	68.6		104.2	768.17	93.0
	0.5	-0.20	68.9		105.7	801.99	93.3
	1.0	-0.23	69.3		107.2	816.57	93.3
	1.5	-0.29	71.3		108.7	868.39	93.7
	11.9	-0.43	59.0		110.2	917.54	94.3
	62.2	93.33	88.1		111.7	970.99	95.2
	63.7	92.99	88.1		113.2	1003.78	95.9
	65.2	92.99	88.1		114.7	978.61	96.8
	66.7	94.00	88.0		116.2	1062.72	97.7
	68.2	93.07	88.0		117.7	1112.53	98.5
	69.7	92.89	88.0		119.2	1177.26	99.1
	71.2	92.81	88.0		120.7	1227.24	99.6
	72.7	92.72	87.9		122.2	1206.44	100.4
	74.2	92.68	87.9		123.7	1258.13	101.2
	75.7	92.64	87.9		125.2	1307.70	102.2
	77.2	92.65	87.8		126.7	1377.87	103.0
	78.7	92.72	87.8		128.2	1430.11	103.9
	80.2	89.26	87.8		129.7	1454.61	104.8
	81.7	94.90	88.0		131.2	1454.35	105.7
	83.2	144.70	87.6		132.7	1503.93	106.8
	84.7	143.63	87.3		134.2	1462.59	106.7
	86.2	144.21	87.3		135.7	1555.24	107.4
	87.7	193.34	87.9		137.2	1549.62	107.8
	89.2	241.88	88.5		138.7	1615.84	108.1
	90.7	291.11	89.2		140.2	1596.66	108.6
	92.2	358.71	90.4		141.7	1650.01	109.7
	93.7	388.85	91.0		143.2	1698.34	110.0
	95.2	466.65	91.7		144.7	1782.28	110.1
	96.7	537.41	92.2		146.2	1743.06	111.4
	98.2	582.81	92.7		147.7	1822.18	112.0
	99.7	630.44	92.7		149.2	1921.91	112.4
	101.2	677.90	92.8		150.7	1875.14	121.8
	102.7	726.67	92.9		152.2	1923.64	122.9

Printing every 6 samples

Serial # 8360 Inside				Serial # 8360 Inside			
Comments	Time (Min.)	Pressure (psig)	Temp. (deg F)	Comments	Time (Min.)	Pressure (psig)	Temp. (deg F)
	153.7	1949.28	123.4		200.4	147.96	130.6
	155.2	1945.90	125.2		201.9	149.11	130.6
	156.7	1994.84	126.3		203.4	150.39	130.6
	158.2	2120.35	126.5		204.9	151.69	130.6
	159.7	2049.01	127.9		206.4	152.33	130.7
	161.2	2139.05	128.8		207.9	153.16	130.6
	162.7	2084.70	129.4		209.4	154.31	130.6
	164.2	2080.60	129.4		210.9	155.28	130.7
	165.7	2075.06	129.3		211.2	156.57	130.7
	167.2	2068.41	129.3		211.4	162.60	130.7
	168.7	2061.29	129.3	Shut-In(1)	211.7	166.70	130.7
	170.2	2130.24	129.5		211.9	171.12	130.7
	171.7	2099.56	129.9		212.2	176.27	130.7
	173.2	2091.08	129.7		212.4	181.77	130.7
	174.7	2071.35	129.7		213.9	224.02	130.7
	176.2	2063.11	129.7		215.4	288.94	130.7
	177.7	2057.79	129.7		216.9	383.96	130.7
	179.2	2053.69	129.7		218.4	500.95	130.7
	180.7	2064.20	129.7		219.9	623.78	130.8
	181.2	2060.44	129.7		221.4	740.91	130.8
	181.4	2058.82	129.7		222.9	846.34	130.8
Initial Hydro-static	181.7	2057.47	129.7		224.4	937.72	130.9
	181.9	2056.23	129.7		225.9	1015.46	130.9
	182.2	2055.17	129.7		227.4	1080.72	130.9
	182.4	2144.75	129.7		228.9	1135.05	130.9
	183.9	2131.76	130.4		230.4	1180.12	130.9
	184.2	2122.07	130.4		231.9	1217.23	130.9
	184.4	120.19	129.7		233.4	1247.85	130.9
Open To Flow (1)	184.7	118.82	129.9		234.9	1273.04	130.9
	184.9	118.86	129.9		236.4	1293.72	130.9
	185.2	119.37	129.9		237.9	1310.89	130.9
	185.4	119.58	129.9		239.4	1324.85	130.9
	186.9	123.40	129.9		240.9	1338.28	130.9
	188.4	125.55	130.0		242.4	1348.02	130.9
	189.9	127.73	130.1		243.9	1355.52	130.9
	191.4	129.86	130.2		245.4	1362.85	130.9
	192.9	131.85	130.3		246.9	1368.64	130.9
	194.4	133.75	130.4		248.4	1374.01	130.9
	195.9	172.54	130.5		249.9	1378.41	130.9
	197.4	145.23	130.5		251.4	1382.49	130.9
	198.9	148.11	130.5		252.9	1385.39	130.9

Printing every 6 samples

Serial # 8360 Inside				Serial # 8360 Inside			
Comments	Time (Min.)	Pressure (psig)	Temp. (deg F)	Comments	Time (Min.)	Pressure (psig)	Temp. (deg F)
	254.4	1388.62	130.9	Shut-In(2)	301.9	224.89	130.9
	255.9	1390.99	130.9		302.2	229.51	130.9
	257.4	1393.05	130.9		302.4	229.55	130.9
	258.9	1395.39	130.9		302.7	231.39	130.9
	260.4	1397.36	130.9		304.2	283.43	130.9
	261.9	1399.10	130.9		305.7	361.38	131.0
	263.4	1401.02	130.9		307.2	459.24	131.0
	264.9	1402.65	130.9		308.7	567.54	131.0
	266.4	1404.32	130.9		310.2	676.04	131.0
	267.9	1405.55	130.9		311.7	777.87	131.0
	269.4	1406.83	130.9		313.2	869.91	131.1
	270.9	1407.98	130.9		314.7	950.39	131.1
	271.7	1408.70	130.9		316.2	1019.45	131.1
End Shut-In(1)	271.9	1408.80	130.9		317.7	1078.01	131.1
	272.2	1408.89	130.9		319.2	1127.05	131.1
	272.4	1407.97	130.9		320.7	1167.94	131.1
Open To Flow (2)	272.7	409.01	130.3		322.2	1201.87	131.2
	272.9	173.83	130.5		323.7	1230.10	131.2
	273.2	172.13	130.6		325.2	1253.52	131.2
	273.4	174.80	130.6		326.7	1273.11	131.2
	273.7	186.63	130.6		328.2	1289.30	131.2
	275.2	173.13	130.6		329.7	1302.87	131.2
	276.7	170.77	130.6		331.2	1314.25	131.2
	278.2	172.14	130.7		332.7	1323.87	131.1
	279.7	174.51	130.7		334.2	1332.03	131.1
	281.2	181.40	130.7		335.7	1339.01	131.1
	282.7	176.39	130.8		337.2	1344.94	131.1
	284.2	182.01	130.8		338.7	1350.23	131.1
	285.7	181.11	130.8		340.2	1354.69	131.1
	287.2	195.99	130.8		341.7	1358.80	131.1
	288.7	180.80	130.8		343.2	1362.37	131.1
	290.2	200.29	130.8		344.7	1365.87	131.1
	291.7	232.35	130.8		346.2	1368.53	131.1
	293.2	193.08	130.9		347.7	1370.97	131.1
	294.7	202.50	130.9		349.2	1373.31	131.1
	296.2	189.10	130.9		350.7	1375.30	131.1
	297.7	192.96	130.9		352.2	1377.17	131.1
	299.2	218.70	130.9		353.7	1378.89	131.1
	300.7	242.58	130.9		355.2	1380.46	131.1
	301.4	216.65	130.9		356.7	1381.86	131.1
	301.7	224.07	130.9		358.2	1383.15	131.1

Printing every 6 samples

Serial # 8360 Inside				Serial # 8360 Inside			
Comments	Time (Min.)	Pressure (psig)	Temp. (deg F)	Comments	Time (Min.)	Pressure (psig)	Temp. (deg F)
	359.7	1384.36	131.1		407.7	1600.81	128.1
	361.2	1385.57	131.1		409.2	1555.24	128.1
	362.7	1386.50	131.1		410.7	1542.91	126.6
	364.2	1387.61	131.1		412.2	1503.74	126.4
	365.7	1388.55	131.1		413.7	1492.12	125.6
	367.2	1366.49	131.1		415.2	1489.64	125.0
End Shut-In(2)	367.7	1370.88	131.1		416.7	1456.59	125.4
	367.9	1372.63	131.1		418.2	1408.88	125.2
	368.2	1374.09	131.1		419.7	1359.83	123.6
	368.4	1925.26	131.4		421.2	1298.19	124.1
	368.7	1986.67	131.2		422.7	1261.95	124.6
	368.9	1849.01	131.2		424.2	1191.79	121.2
	370.4	1845.26	131.2		425.7	1134.72	122.4
	371.9	2027.01	131.2		427.2	1116.11	120.8
	373.4	2086.90	131.2		428.7	1064.50	120.8
	374.9	2049.61	131.2		430.2	1014.25	120.0
Final Hydro-static	376.4	2031.75	131.2		431.7	963.83	118.5
	376.7	2030.93	131.2		433.2	868.58	116.7
	376.9	2030.95	131.2		434.7	794.36	116.0
	377.2	2031.34	131.2		436.2	772.75	113.9
	377.4	2031.66	131.2		437.7	724.57	106.6
	377.7	2031.79	131.2		439.2	637.66	100.8
	379.2	2030.65	131.1		440.7	589.19	95.1
	380.7	2054.76	131.1		442.2	532.68	92.4
	382.2	1982.68	131.0		443.7	453.23	90.5
	383.7	2008.63	131.0		445.2	386.88	88.1
	385.2	1990.67	131.0		446.7	339.09	86.3
	386.7	1919.97	130.9		448.2	237.90	84.6
	388.2	1941.82	130.9		449.7	188.57	83.4
	389.7	1921.97	130.8		451.2	142.77	82.5
	391.2	1895.25	130.8		452.7	141.76	82.4
	392.7	1866.31	130.6		454.2	79.66	82.1
	394.2	1770.46	130.5		455.7	79.49	82.1
	395.7	1807.55	130.4		457.2	77.03	82.0
	397.2	1755.76	130.1		458.7	76.97	82.0
	398.7	1661.21	129.9		460.2	77.36	82.1
	400.2	1730.73	129.7		461.7	76.54	82.1
	401.7	1728.59	129.3		463.2	76.44	82.1
	403.2	1715.93	129.1		464.7	76.37	82.1
	404.7	1600.86	128.1		466.2	76.26	82.1
	406.2	1642.38	127.2		467.7	76.16	82.1

Printing every 6 samples

Serial # 8360 Inside				Serial # 8360 Inside			
Comments	Time (Min.)	Pressure (psig)	Temp. (deg F)	Comments	Time (Min.)	Pressure (psig)	Temp. (deg F)
	469.2	76.06	82.1		530.7	-0.65	54.2
	470.7	75.98	82.1				
	472.2	75.92	82.1				
	473.7	73.88	82.1				
	475.2	73.58	82.0				
	476.7	72.99	82.0				
	478.2	72.89	82.0				
	479.7	72.83	82.0				
	481.2	72.80	82.0				
	482.7	72.78	82.0				
	484.2	70.05	82.0				
	485.7	67.24	82.0				
	487.2	72.64	82.0				
	488.7	72.68	81.9				
	490.2	69.42	81.9				
	491.7	60.91	81.9				
	493.2	58.06	81.9				
	494.7	57.17	81.9				
	496.2	57.29	81.9				
	497.7	57.07	81.9				
	499.2	56.44	81.9				
	500.7	56.36	81.9				
	502.2	56.33	81.8				
	503.7	56.26	81.8				
	505.2	38.97	81.8				
	506.7	36.54	81.8				
	508.2	20.55	81.7				
	509.7	2.16	81.4				
	511.2	2.42	81.4				
	512.7	0.01	80.9				
	514.2	-0.04	80.9				
	515.7	-0.17	78.0				
	517.2	-0.36	70.2				
	518.7	-0.49	62.5				
	520.2	-0.53	59.6				
	521.7	-0.54	57.7				
	523.2	-0.53	56.2				
	524.7	-0.54	55.1				
	526.2	-0.59	54.2				
	527.7	-0.68	53.5				
	529.2	-0.56	54.1				

Printing every 6 samples