



DIAMOND TESTING
P.O. Box 157
HOISINGTON, KANSAS 67544
(620) 653-7550 • (800) 542-7313
STC 21108.D235

Company L. D. Drilling, Inc. Lease & Well No. Zink "B" No. 1
Elevation 1827KB Formation Viola Effective Pay Ft. Ticket No. J1842
Date 4-02-06 Sec. 24 Twp. 26S Range 11W County Pratt State Kansas
Test Approved By Kim B. Shoemaker Diamond Representative John C. Riedl

Formation Test No. 1 Interval Tested from 4,274 ft. to 4,297 ft. Total Depth 4,297 ft.
Packer Depth 4,269 ft. Size 6 3/4 in. Packer Depth ft. Size in.
Packer Depth 4,274 ft. Size 6 3/4 in. Packer Depth ft. Size in.
Depth of Selective Zone Set ft.

Top Recorder Depth (Inside) 4,277 ft. Recorder Number 21108 Cap. 5,000 psi
Bottom Recorder Depth (Outside) 4,294 ft. Recorder Number 11073 Cap. 4,000 psi
Below Straddle Recorder Depth ft. Recorder Number Cap. psi

Drilling Contractor Warren Drilling - Rig 8 Drill Collar Length 250 ft. I.D. 2 1/4 in.
Mud Type Chemical Viscosity 52 Weight Pipe Length ft. I.D. in.
Weight 9.4 Water Loss 13.0 cc. Drill Pipe Length 3,998 ft. I.D. 3 1/2 in.
Chlorides 9,000 P.P.M. Test Tool Length 26 ft. Tool Size 3 1/2 - IF in.
Jars: Make Bowen Serial Number No. 2 Anchor Length 23 ft. Size 4 1/2 - FH in.
Did Well Flow? No Reversed Out No Surface Choke Size 1 in. Bottom Choke Size 5/8 in.
Main Hole Size 7 7/8 in. Tool Joint Size 4 1/2 - XH in.

Blow: 1st Open: Strong blow. Off bottom of bucket in 1 min. Gas to surface in 3 mins.
2nd Open: Gas to surface throughout. (SEE GAS VOLUME REPORT.)

Recovered 120 ft. of drilling mud = .590400 bbls.
Recovered 120 ft. of water = .590400 bbls. (Chlorides: 35,000 Ppm)
Recovered 240 ft. of TOTAL FLUID = 1.180800 bbls.
Recovered ft. of
Recovered ft. of

Remarks

Time Set Packer(s)	<u>5:40</u>	P.M. <u>A.M.</u>	Time Started Off Bottom	<u>8:40</u>	P.M. <u>A.M.</u>	Maximum Temperature	<u>126°</u>
Initial Hydrostatic Pressure			(A)	<u>2106</u>	P.S.I.		
Initial Flow Period	Minutes	<u>30</u>	(B)	<u>109</u>	P.S.I. to (C)	<u>133</u>	P.S.I.
Initial Closed In Period	Minutes	<u>45</u>	(D)	<u>1037</u>	P.S.I.		
Final Flow Period	Minutes	<u>45</u>	(E)	<u>115</u>	P.S.I. to (F)	<u>145</u>	P.S.I.
Final Closed In Period	Minutes	<u>60</u>	(G)	<u>1036</u>	P.S.I.		
Final Hydrostatic Pressure			(H)	<u>2049</u>	P.S.I.		



DIAMOND TESTING

P.O. Box 157

HOISINGTON, KANSAS 67544

(620) 653-7550 • (800) 542-7313

Page 2 of 2 Pages

GAS VOLUME REPORT

Company L. D. Drilling, Inc. Lease & Well No. Zink "B" No. 1
Date 4-2-06 Sec. 24 Twp. 26 S Rge. 11 W Location 660' FSL & 1,050' FWL, SEC County Pratt State KS
Drilling Contractor Warren Drilling - Rig 8 Formation Viola DST No. 1
Remarks: 1st Open: Gas to surface in 3 mins. Gas burned. Gas sample taken.

INITIAL FLOW

Open Tool: 5:40 a.m.

Time O'Clock	Orifice Size	Gauge	MCF/D
5:50 a.m.	1/2 in.	10 psi	116,000
6:00 a.m.	1/2 in.	10 psi	116,000
6:10 a.m.	1/2 in.	10 psi	116,000

FINAL FLOW

Open Tool: 6:55 a.m.

Time O'Clock	Orifice Size	Gauge	MCF/D
7:05 a.m.	1/2 in.	12 psi	129,000
7:15 a.m.	1/2 in.	14 psi	141,000
7:25 a.m.	1/2 in.	14 psi	141,000
7:35 a.m.	1/2 in.	15 psi	147,000
7:40 a.m.	1/2 in.	15 psi	147,000

GENERAL INFORMATION

Client Information:

Company: L D DRILLING INC

Contact: L D DAVIS

Phone: Fax: e-mail:

Site Information:

Contact: KIM SHOEMAKER

Phone: Fax: e-mail:

Well Information:

Name: ZINK B #1

Operator: L D DRILLING INC

Location-Downhole: DST #2 4274 TO 4297

Location-Surface: S24/26S/11W

Test Information:

Company: DIAMOND TESTING

Representative: JOHN RIEDL

Supervisor: KIM SHOEMAKER

Test Type: CONVENTIONAL Job Number: D235

Test Unit: 2

Start Date: 2006/04/02 Start Time: 02:21:00

End Date: 2006/04/02 End Time: 11:50:00

Report Date: 2006/04/02 Prepared By: JOHN RIEDL

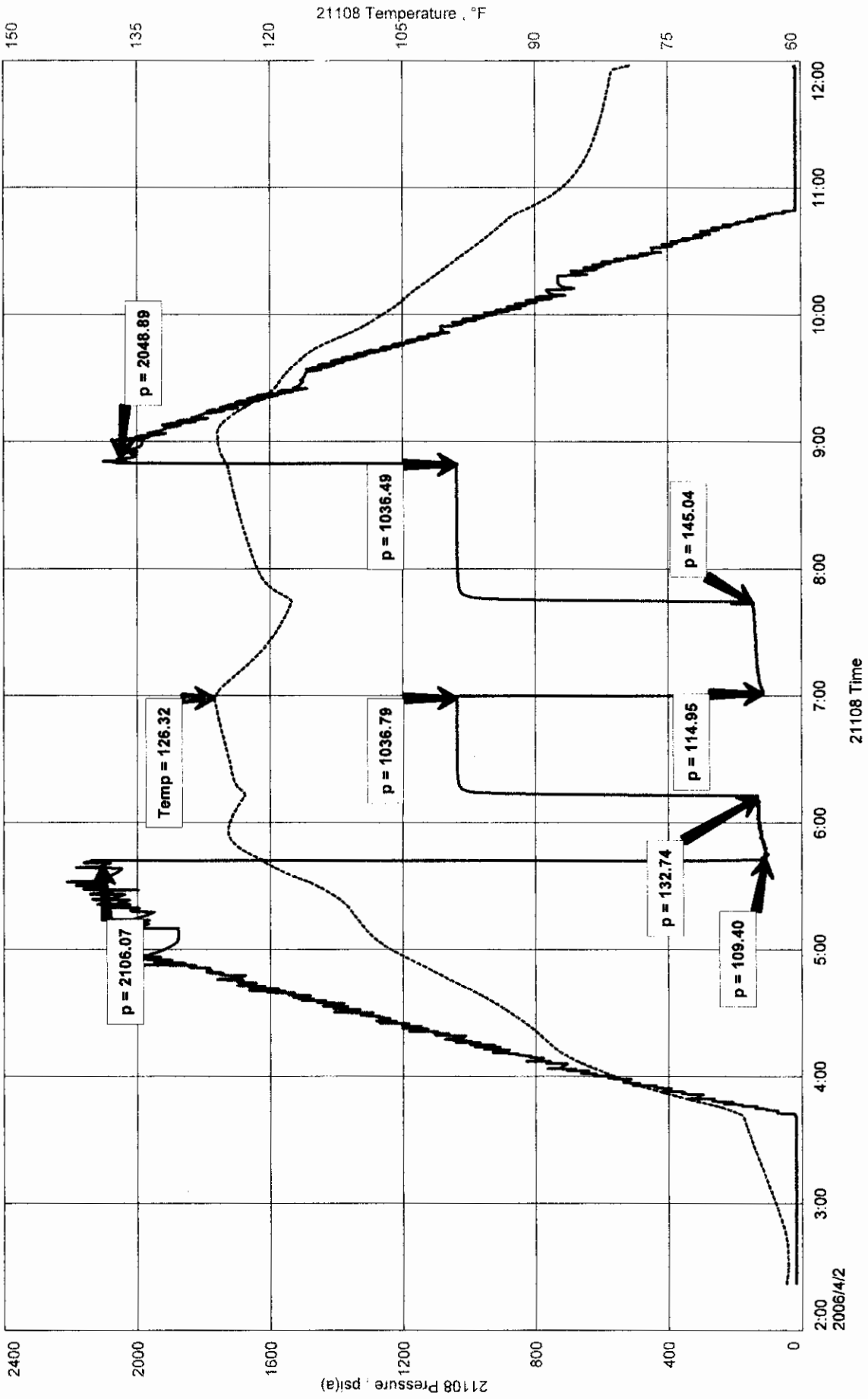
Qualified By: KIM SHOEMAKER

Remarks:
REC: 120' DRILLING MUD
120' WATER (CHLORIDES 35,000PPm)
TOTAL FLUID REC. 240' ALL IN DRILL COLLARS
GTS 3MINUTES INTO 1ST FLOW (SEE GAS VOLUME REPORT)

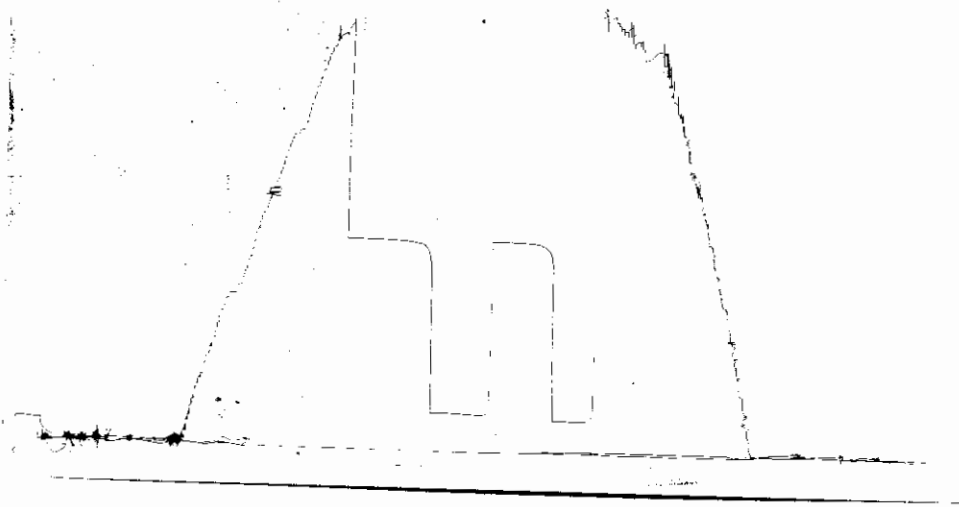
L D DRILLING INC
DST #2 4274 TO 4297
Start Test Date: 2006/04/02
Final Test Date: 2006/04/02

ZINK B #1
Formation: VIOLA
Job Number: D235

ZINK B #1



L.D.
 ZINK B #1
 DST #1
 REC#11023
 8055117
 LOC 4184



This is an actual photograph of recorder chart.

POINT	PRESSURE		
	Field Reading	Elec. Office Reading	
(A) Initial Hydrostatic Mud	2106	2106	PSI
(B) First Initial Flow Pressure.....	109	109	PSI
(C) First Final Flow Pressure	133	133	PSI
(D) Initial Closed-in Pressure	1037	1037	PSI
(E) Second Initial Flow Pressure.....	115	115	PSI
(F) Second Final Flow Pressure.....	145	145	PSI
(G) Final Closed-in Pressure.....	1036	1036	PSI
(H) Final Hydrostatic Mud.....	2049	2049	PSI