

# DIAMOND TESTING

P.O. Box 157

HOISINGTON, KANSAS 67544

(620) 653-7550 • (800) 542-7313

STC 30035.D 476

Page 1 of 3 Pages

Company Nash Oil & Gas, Inc. Lease & Well No. Hastings No. 1

Elevation 1773KB Formation Viola Effective Pay -- Ft. Ticket No. 2360

Date 8-18-07 Sec. 36 Twp. 26S Range 11W County Pratt State Kansas

Test Approved By Kim B. Shoemaker Diamond Representative Roger D. Friedly

Formation Test No. 1 Interval Tested from 4,268 ft. to 4,289 ft. Total Depth 4,289 ft.

Packer Depth 4,263 ft. Size 6 3/4 in. Packer Depth -- ft. Size -- in.

Packer Depth 4,268 ft. Size 6 3/4 in. Packer Depth -- ft. Size -- in.

Depth of Selective Zone Set          ft.

Top Recorder Depth (Inside) 4,250 ft. Recorder Number 30035 Cap. 5,000 psi

Bottom Recorder Depth (Outside) 4,286 ft. Recorder Number 13387 Cap. 4,000 psi

Below Straddle Recorder Depth          ft. Recorder Number          Cap.          psi

Drilling Contractor Hardt Drilling - Rig 1 Drill Collar Length 127 ft. I.D. 2 1/4 in.

Mud Type Chemical Viscosity 57 Weight Pipe Length -- ft. I.D. -- in.

Weight 90 Water Loss 11.2 cc. Drill Pipe Length 4,110 ft. I.D. 3 1/2 in.

Chlorides 12,000 P.P.M. Test Tool Length 31 ft. Tool Size 3 1/2 - IF in.

Jars: Make Bowen Serial Number No. 1 Anchor Length 21 ft. Size 4 1/2 - FH in.

Did Well Flow? No Reversed Out No Surface Choke Size 1 in. Bottom Choke Size 5/8 in.

Main Hole Size 7 7/8 in. Tool Joint Size 4 1/2 - XH in.

Blow: 1st Open: Fair, 1 in., blow increasing. Off bottom of bucket in 5 mins. No blow back during shut-in.  
2nd Open: Strong blow. Off bottom of bucket immediately. Gas to surface in 28 mins. No blow back during shut-in.

Recovered 20 ft. of drilling mud = .098400 bbls. (Grind out: 100%-mud) SEE GAS VOLUME REPORT.

Recovered          ft. of         

Recovered          ft. of         

Recovered          ft. of         

Recovered          ft. of         

Remarks Tool Sample Grind Out: 100%-drilling mud with a few oil specks.

Time Set Packer(s) 12:26 ~~P.M.~~ <sup>A.M.</sup> Time Started Off Bottom 3:41 ~~P.M.~~ <sup>A.M.</sup> Maximum Temperature 132°

Initial Hydrostatic Pressure ..... (A) 2031 P.S.I.

Initial Flow Period ..... Minutes 30 (B) 20 P.S.I. to (C) 27 P.S.I.

Initial Closed In Period ..... Minutes 45 (D) 922 P.S.I.

Final Flow Period ..... Minutes 60 (E) 22 P.S.I. to (F) 32 P.S.I.

Final Closed In Period ..... Minutes 60 (G) 924 P.S.I.

Final Hydrostatic Pressure ..... (H) 2022 P.S.I.



# DIAMOND TESTING

P.O. Box 157

HOISINGTON, KANSAS 67544  
 (620) 653-7550 • (800) 542-7313

Page 2 of 3 Pages

## GAS VOLUME REPORT

Company Nash Oil & Gas, Inc. Lease & Well No. Hastings No. 1  
 Date 8-18-07 Sec. 36 Twp. 26 S Rge. 11 W Location C W/2 SE County Pratt State KS  
 Drilling Contractor Hardt Drilling - Rig 1 Formation Viola DST No. 1  
 Remarks: 2nd Open: Gas to surface in 28 mins. on final flow. Burned nicely.

### INITIAL FLOW

Time O'Clock	Orifice Size	Gauge	CF/D
	in.	in.	
	in.	in.	
	in.	in.	
	in.	in.	
	in.	in.	
	in.	in.	
	in.	in.	
	in.	in.	
	in.	in.	
	in.	in.	
	in.	in.	

### FINAL FLOW

Open Tool: 1:41 a.m.

Time O'Clock	Orifice Size	Gauge	CF/D
2:11 a.m.	1/8 in.	3.5 psi	5,260
2:16 a.m.	1/8 in.	4.5 psi	6,010
2:21 a.m.	1/8 in.	5.0 psi	6,390
2:26 a.m.	1/8 in.	5.5 psi	6,720
3:31 a.m.	1/8 in.	6.0 psi	7,060
3:36 a.m.	1/8 in.	6.5 psi	7,370
3:41 a.m.	1/8 in.	7.0 psi	7,700

## GENERAL INFORMATION

### Client Information:

Company: NASH OIL & GAS, INC.

Contact: JERRY NASY

Phone: Fax: e-mail:

### Site Information:

Contact: KIM SHOEMAKER

Phone: Fax: e-mail:

### Well Information:

Name: HASTING #1

Operator: NASH OIL & GAS, INC.

Location-Downhole: DST #1 VIOLA 4,268' - 4,289'

Location-Surface: SEC 36-26S-11W PRATT COUNTY

### Test Information:

Company: DIAMOND TESTING

Representative: ROGER D. FRIEDLY

Supervisor: KIM SHOEMAKER

Test Type: CONVENTIONAL Job Number:

Test Unit: NO. 1

Start Date: 2007/08/17 Start Time: 21:04:30

End Date: 2007/08/18 End Time: 06:45:40

Report Date: Prepared By:

Remarks: Qualified By:

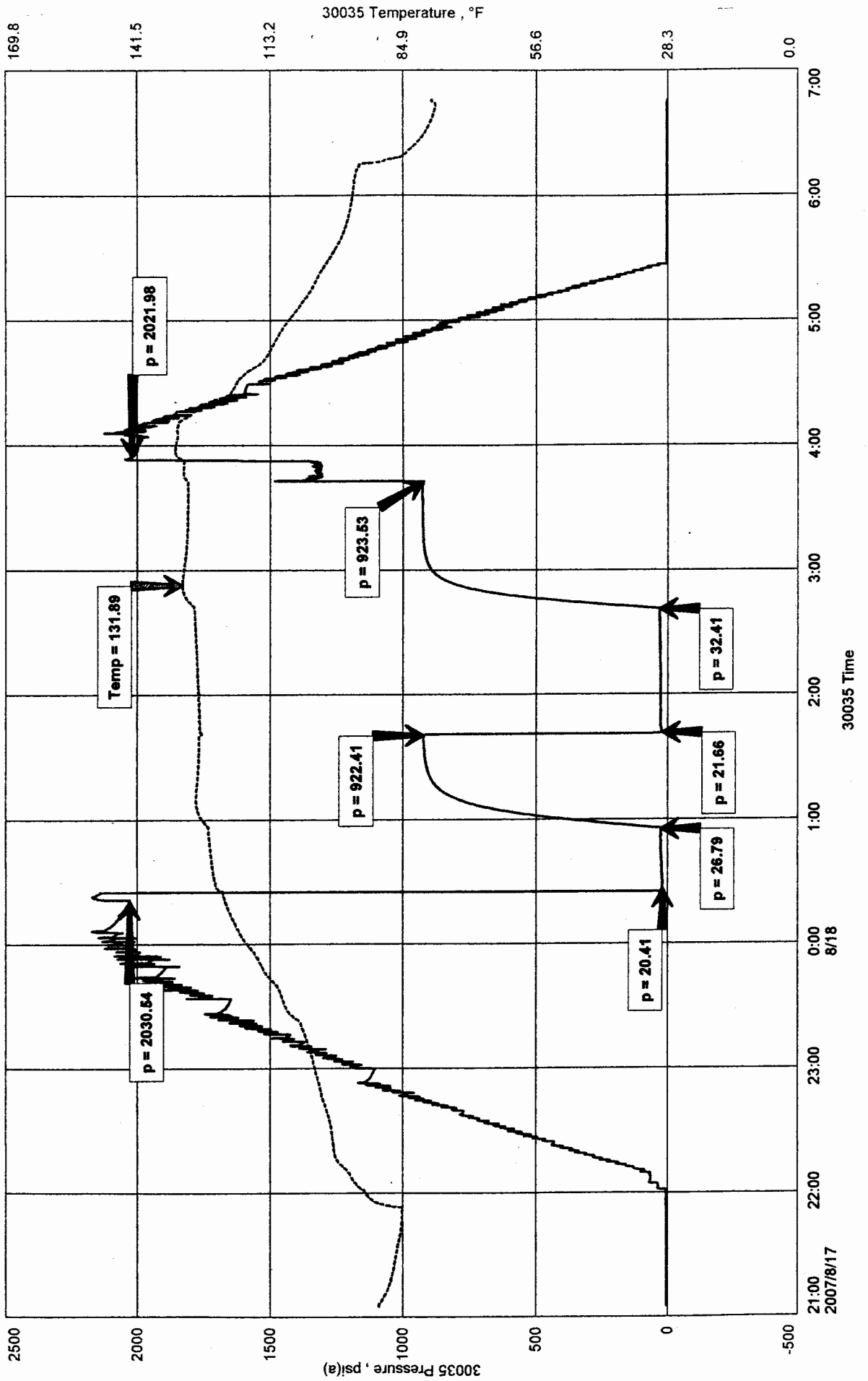
RECOVERED: GAS TO SURFACE 28 MIN ON FINAL FLOW  
3,900 CDF - 7,700 CFD @ END  
20' DRILLING MUD 100% MUD

TOOL SAMPLE: 100% DM WITH A FEW OIL SPECKS

NASH OIL & GAS, INC.  
 DST #1 VIOLA 4,268' - 4,289'  
 Start Test Date: 2007/08/17  
 Final Test Date: 2007/08/18

HASTING #1  
 Formation: DST #1 VIOLA 4,268' - 4,289'  
 Pool: WILDCAT

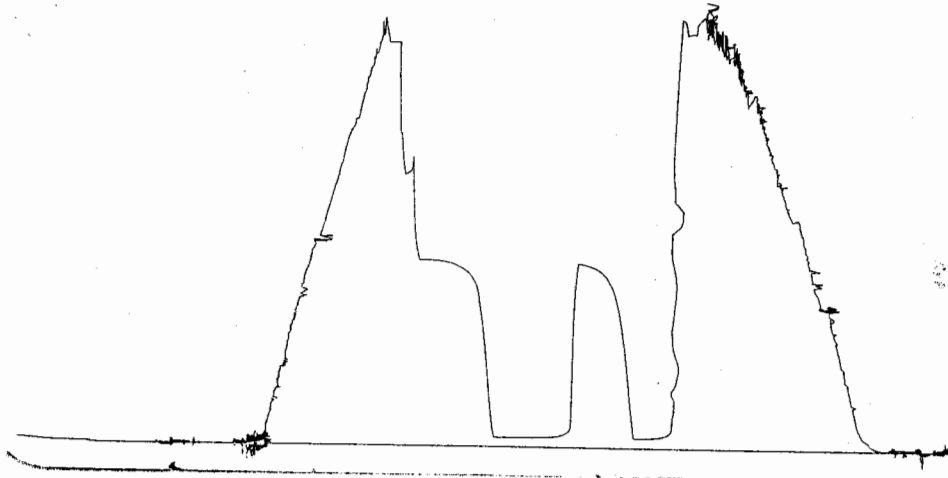
# HASTING #1



DST #1 1500' OFFLINE

Viola

4268-4287  
LOC 4286



This is an actual photograph of recorder chart.

POINT	PRESSURE		
	Field Reading	Elec. Office Reading	
(A) Initial Hydrostatic Mud .....	2031	2031	PSI
(B) First Initial Flow Pressure.....	20	20	PSI
(C) First Final Flow Pressure .....	27	27	PSI
(D) Initial Closed-in Pressure .....	922	922	PSI
(E) Second Initial Flow Pressure.....	22	22	PSI
(F) Second Final Flow Pressure.....	32	32	PSI
(G) Final Closed-in Pressure.....	924	924	PSI
(H) Final Hydrostatic Mud.....	2022	2022	PSI



**DIAMOND TESTING**  
P.O. Box 157  
**HOISINGTON, KANSAS 67544**  
(620) 653-7550 • (800) 542-7313  
STC 30035.D 477

Company Nash Oil & Gas, Inc. Lease & Well No. Hastings No. 1  
Elevation 1773KB Formation Viola Effective Pay -- Ft. Ticket No. 2361  
Date 8-18-07 Sec. 36 Twp. 26S Range 11W County Pratt State Kansas  
Test Approved By Kim B. Shoemaker Diamond Representative Roger D. Friedly

Formation Test No. 2 Interval Tested from 4,272 ft. to 4,295 ft. Total Depth 4,295 ft.  
Packer Depth 4,267 ft. Size 6 3/4 in. Packer Depth -- ft. Size -- in.  
Packer Depth 4,272 ft. Size 6 3/4 in. Packer Depth -- ft. Size -- in.  
Depth of Selective Zone Set          ft.

Top Recorder Depth (Inside) 4,254 ft. Recorder Number 30035 Cap. 5,000 psi  
Bottom Recorder Depth (Outside) 4,292 ft. Recorder Number 13387 Cap. 4,000 psi  
Below Straddle Recorder Depth          ft. Recorder Number          Cap.          psi

Drilling Contractor Hardt Drilling - Rig 1 Drill Collar Length 127 ft. I.D. 2 1/4 in.  
Mud Type Chemical Viscosity 62 Weight Pipe Length -- ft. I.D. -- in.  
Weight 9.0 Water Loss 11.2 cc. Drill Pipe Length 4,114 ft. I.D. 3 1/2 in.  
Chlorides 12,000 P.P.M. Test Tool Length 31 ft. Tool Size 3 1/2 - IF in.  
Jars: Make Bowen Serial Number No. 1 Anchor Length 23 ft. Size 4 1/2 - FH in.  
Did Well Flow? No Reversed Out No Surface Choke Size 1 in. Bottom Choke Size 5/8 in.  
Main Hole Size 7 7/8 in. Tool Joint Size 4 1/2 - XH in.

Blow: 1st Open: Strong blow. Off bottom of bucket in 45 secs. No blow back during shut-in.  
2nd Open: Strong blow. Off bottom of bucket immediately. Gas to surface in 1 min. Weak, 1/2 in., blow back during shut-in.

Recovered 20 ft. of drilling mud = .284000 bbls. (Grind out: 100%-mud)  
Recovered 126 ft. of gas & oil cut watery mud = 1.789200 bbls. (Grind out: 14%-gas; 22%-oil; 30%-water; 34%-mud)  
Recovered 127 ft. of heavy gas & oil cut muddy water = .624840 bbls. (Grind out: 31%-gas; 17%-oil; 17%-mud; 35%-water)  
Recovered 273 ft. of TOTAL FLUID = 2.698040 bbls. (Chlorides: 38,000 Ppm)  
Recovered          ft. of           
Remarks Tool Sample Grind Out: BLEW OUT TOOL

Time Set Packer(s)	<u>4:28</u>	<del>XXX</del> P.M.	Time Started Off Bottom	<u>7:28</u>	<del>XXX</del> P.M.	Maximum Temperature	<u>131°</u>
Initial Hydrostatic Pressure			(A)	<u>2051</u>		P.S.I.	
Initial Flow Period	Minutes	<u>30</u>	(B)	<u>28</u>		P.S.I. to (C)	<u>63</u> P.S.I.
Initial Closed In Period	Minutes	<u>45</u>	(D)	<u>918</u>		P.S.I.	
Final Flow Period	Minutes	<u>45</u>	(E)	<u>60</u>		P.S.I. to (F)	<u>94</u> P.S.I.
Final Closed In Period	Minutes	<u>60</u>	(G)	<u>921</u>		P.S.I.	
Final Hydrostatic Pressure			(H)	<u>2051</u>		P.S.I.	



# DIAMOND TESTING

P.O. Box 157

HOISINGTON, KANSAS 67544  
(620) 653-7550 • (800) 542-7313

Page 2 of 3 Pages

## GAS VOLUME REPORT

Company Nash Oil & Gas, Inc. Lease & Well No. Hastings No. 1  
Date 8-18-07 Sec. 36 Twp. 26 S Rge. 11 W Location C W/2 SE County Pratt State KS  
Drilling Contractor Hardt Drilling - Rig 1 Formation Viola DST No. 2  
Remarks: 2nd Open: Gas to surface in 1 min. on final flow. Burned nicely.

### INITIAL FLOW

Time O'Clock	Orifice Size	Gauge	CF/D
	in.	in.	
	in.	in.	
	in.	in.	
	in.	in.	
	in.	in.	
	in.	in.	
	in.	in.	
	in.	in.	
	in.	in.	
	in.	in.	
	in.	in.	

### FINAL FLOW

Open Tool: 5:43 p.m.

Time O'Clock	Orifice Size	Gauge	CF/D
5:48 p.m.	1/8 in.	9 in.	1,590
5:53 p.m.	1/8 in.	14 in.	1,980
5:58 p.m.	1/8 in.	18 in.	2,300
6:03 p.m.	1/8 in.	22 in.	2,480
6:08 p.m.	1/8 in.	28 in.	2,790
6:13 p.m.	1/4 in.	7 in.	4,450
6:18 p.m.	1/4 in.	8.5 in.	5,000
6:23 p.m.	1/4 in.	8.5 in.	5,000
6:28 p.m.	1/4 in.	8.5 in.	5,000

## GENERAL INFORMATION

### Client Information:

Company: NASH OIL & GAS, INC.

Contact: JERRY NASH

Phone: Fax: e-mail:

### Site Information:

Contact: KIM SHOEMAKER

Phone: Fax: e-mail:

### Well Information:

Name: HASTING #1

Operator: NASH OIL & GAS, INC.

Location-Downhole: DST #2 VIOLA 4,272' - 4,295'

Location-Surface: SEC 36-26S-11W PRATT COUNTY

### Test Information:

Company: DIAMOND TESTING

Representative: ROGER D. FRIEDLY

Supervisor: KIM SHOEMAKER

Test Type: CONVENTIONAL Job Number:

Test Unit: NO. 1

Start Date: 2007/08/18 Start Time: 13:48:00

End Date: 2007/08/18 End Time: 22:46:00

Report Date: Prepared By:

Remarks: Qualified By:

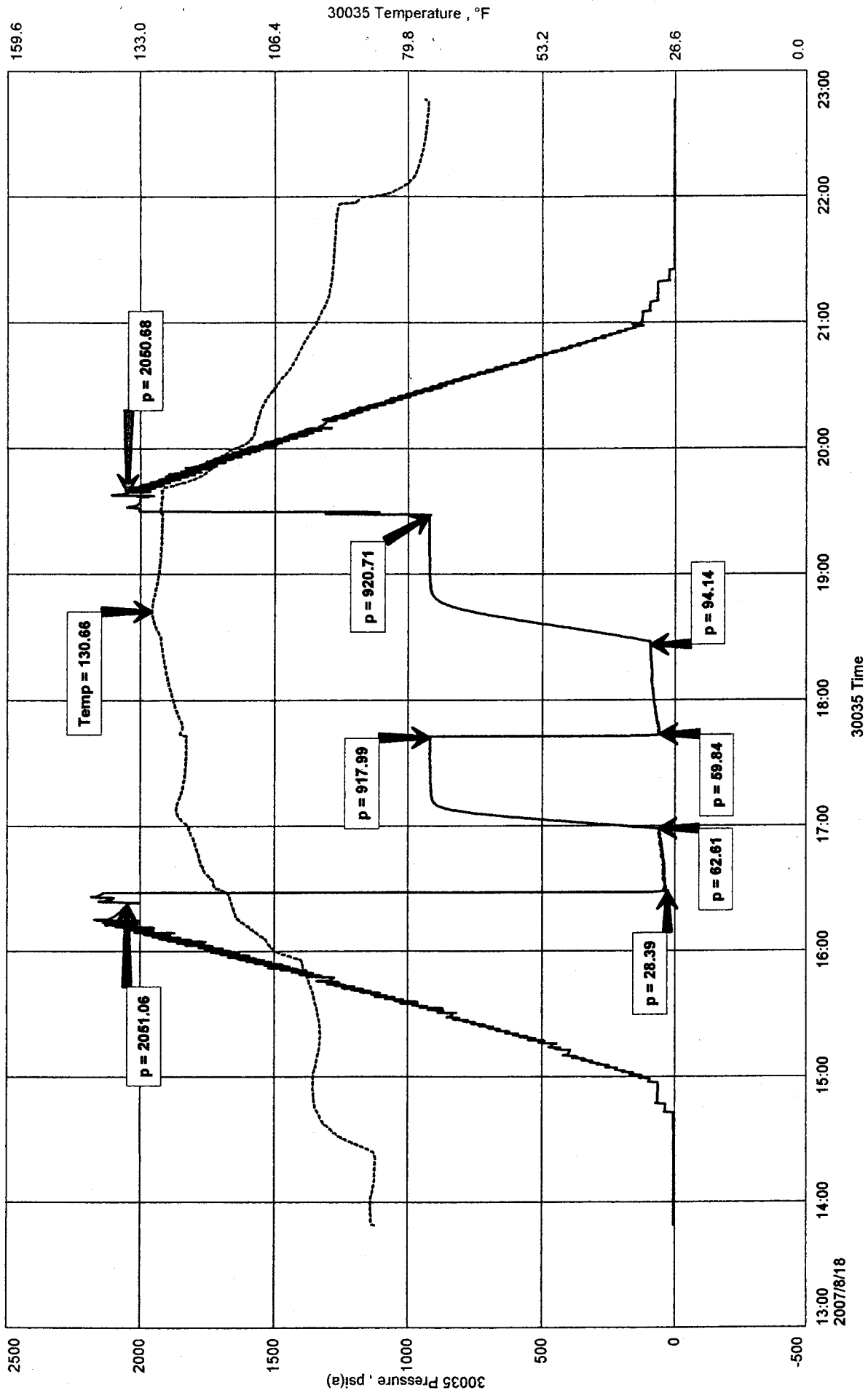
RECOVERED: GTS 1 MIN FINAL FLOW 1,590 CFD TO 5,000 CFD  
20' DM 100% MUD  
126' G&OCWM 14% GAS, 22% OIL, 30% WTR, 34% MUD  
127' HG&OCMW 31% GAS, 17% OIL, 17% MUD, 35% WTR  
273' TOTAL FLUID

TOOL SAMPLE: BLEW OUT OF TOOL

NASH OIL & GAS, INC.  
DST #2 VIOLA 4,272' - 4,295'  
Start Test Date: 2007/08/18  
Final Test Date: 2007/08/18

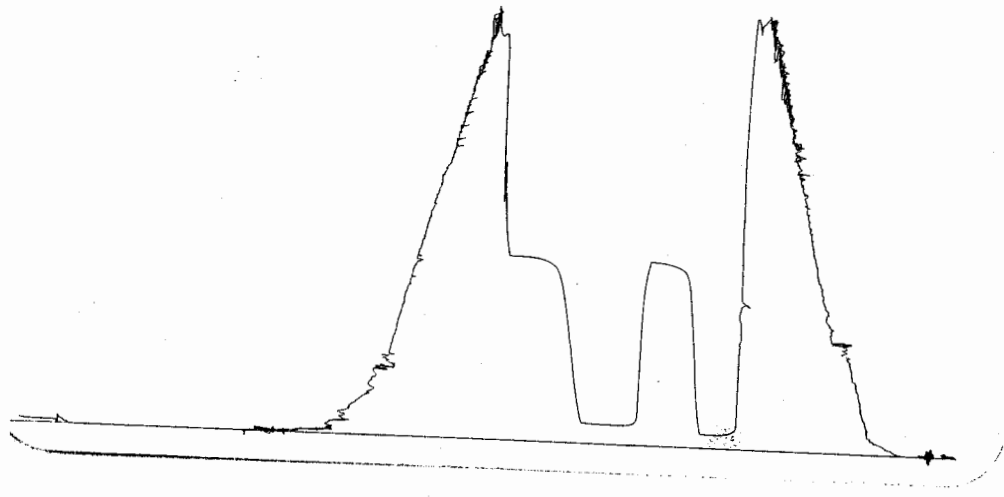
HASTING #1  
Formation: DST #2 VIOLA 4,272' - 4,295'  
Pool: WILDCAT

# HASTING #1



257 #2 CURTIS 1030 /  
*Viola*

4212-4293  
 LOC 4292



This is an actual photograph of recorder chart.

POINT	PRESSURE		PSI
	Field Reading	Elec. Office Reading	
(A) Initial Hydrostatic Mud .....	2051	2051	PSI
(B) First Initial Flow Pressure .....	28	28	PSI
(C) First Final Flow Pressure .....	63	63	PSI
(D) Initial Closed-in Pressure .....	918	918	PSI
(E) Second Initial Flow Pressure .....	60	60	PSI
(F) Second Final Flow Pressure .....	94	94	PSI
(G) Final Closed-in Pressure .....	921	921	PSI
(H) Final Hydrostatic Mud .....	2051	2051	PSI