



15-151-22329

29-265-11w

DIAMOND TESTING

P.O. Box 157

HOISINGTON, KANSAS 67544

(620) 653-7550 • (800) 542-7313

STC 30035.D017

Company L. D. Drilling, Inc. Lease & Well No. Pruitt No. 1-29

Elevation 1836 KB Formation Cottonwood Effective Pay -- Ft. Ticket No. P017

Date 3-13-09 Sec. 29 Twp. 26S Range 11W County Pratt State Kansas

Test Approved By Kim B. Shoemaker Diamond Representative Paul Schilowsky

Formation Test No. 1 Interval Tested from 2,262 ft. to 2,328 ft. Total Depth 2,328 ft.

Packer Depth 2,257 ft. Size 6 3/4 in. Packer Depth -- ft. Size -- in.

Packer Depth 2,262 ft. Size 6 3/4 in. Packer Depth -- ft. Size -- in.

Depth of Selective Zone Set ft.

Top Recorder Depth (Inside) 2,252 ft. Recorder Number 30035 Cap. 5,000 psi

Bottom Recorder Depth (Outside) 2,325 ft. Recorder Number 13387 Cap. 3,900 psi

Below Straddle Recorder Depth ft. Recorder Number Cap. psi

Drilling Contractor L. D. Drilling, Inc. - Rig 1 Drill Collar Length -- ft. I.D. -- in.

Mud Type Chemical Viscosity 38 Weight Pipe Length -- ft. I.D. -- in.

Weight 9.1 Water Loss -- cc. Drill Pipe Length 2,237 ft. I.D. 3 1/2 in.

Chlorides -- P.P.M. Test Tool Length 25 ft. Tool Size 3 1/2 - IF in.

Jars: Make Sterling Serial Number Not Run Anchor Length 35' perf. w/31' drill pipe Size 4 1/2 - FH in.

Did Well Flow? No Reversed Out No Surface Choke Size 1 in. Bottom Choke Size 5/8 in.

Main Hole Size 7 7/8 in. Tool Joint Size 4 1/2 - XH in.

Blow: 1st Open: Strong blow. Off bottom of bucket in 45 secs. Bottom of bucket blow back during shut-in.

2nd Open: Strong blow. Off bottom of bucket instantly. Gas to surface in 30 mins. Bottom of bucket blow back during shut-in.

Recovered 806 ft. of gas in pipe

Recovered 1,441 ft. of muddy water = 14.784660 bbls.

Recovered 1,441 ft. of TOTAL FLUID = 14.784660 bbls.

Recovered ft. of

Recovered ft. of

Remarks Tool Sample Grind Out: 100%-water

RECEIVED
NOV 02 2009
KCC WICHITA

Time Set Packer(s) 5:12 A.M. P.M. Time Started Off Bottom 8:12 A.M. P.M. Maximum Temperature 94°

Initial Hydrostatic Pressure (A) 1132 P.S.I.

Initial Flow Period Minutes 30 (B) 102 P.S.I. to (C) 486 P.S.I.

Initial Closed In Period Minutes 45 (D) 789 P.S.I.

Final Flow Period Minutes 45 (E) 498 P.S.I. to (F) 722 P.S.I.

Final Closed In Period Minutes 60 (G) 791 P.S.I.

Final Hydrostatic Pressure (H) 1134 P.S.I.

GENERAL INFORMATION

Client Information:

Company: LD DRLG. CO.

Contact: LD DAVIS

Phone: Fax: e-mail:

Site Information:

Contact: KIM SHOEMAKER

Phone: Fax: e-mail:

Well Information:

Name: PRUITT 1-29

Operator: LD DRLG. CO.

Location-Downhole: DST #1 COTTONWOOD 2262-2328

Location-Surface: SEC.29 / 26 S / 11 W

Test Information:

Company: DIAMOND TESTING

Representative: PAUL

Supervisor: KIM SHOEMAKER

Test Type: Drill Stem Test

Job Number: P017

Test Unit: NO. 1

Start Date: 2009/03/13

Start Time: 03:29:00

End Date: 2009/03/13

End Time: 10:19:00

Report Date: 2009/03/13

Prepared By: PAUL

Remarks:

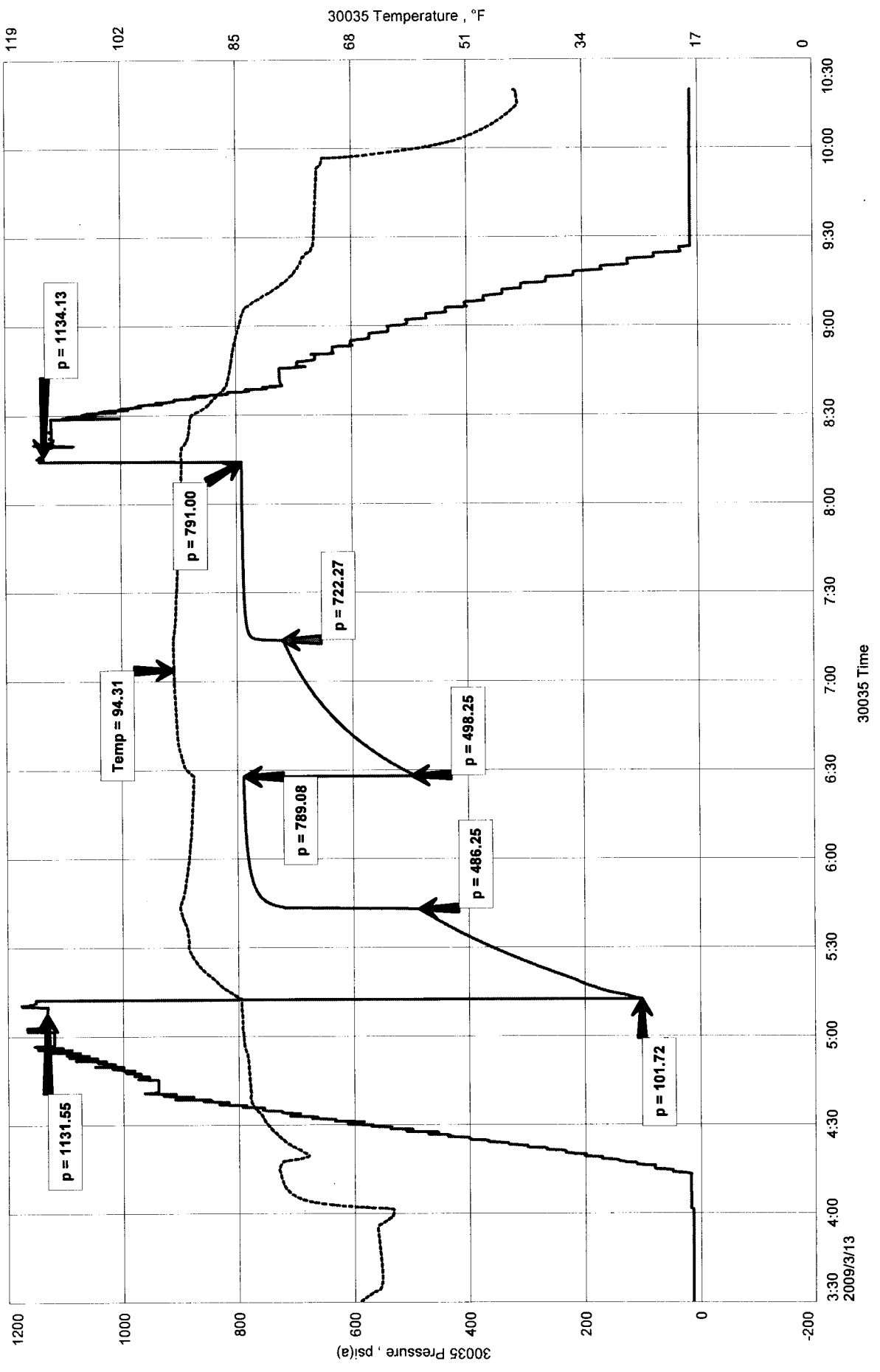
Qualified By: KIM

RECOVERED: 806 FT. GIP
1441 FT. MW
TOOL SMPL: 100% WATER

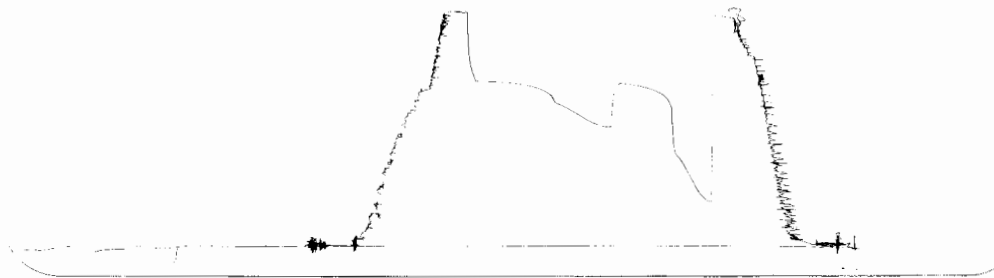
LD DRLG. CO.
 DST #1 COTTONWOOD 2262-2328
 Start Test Date: 2009/03/13
 Final Test Date: 2009/03/13

PRUITT 1-29
 Formation: DST#1 COTTONWOOD 2262-2328
 Job Number: P017

PRUITT 1-29



Ost #1 226242328 OWSide 13387 Loc. 2325



This is an actual photograph of recorder chart.

POINT	PRESSURE		PSI
	Field Reading	Elec. Office Reading	
(A) Initial Hydrostatic Mud	1132	1132	PSI
(B) First Initial Flow Pressure.....	102	102	PSI
(C) First Final Flow Pressure	486	486	PSI
(D) Initial Closed-in Pressure	789	789	PSI
(E) Second Initial Flow Pressure.....	498	498	PSI
(F) Second Final Flow Pressure.....	722	722	PSI
(G) Final Closed-in Pressure.....	791	791	PSI
(H) Final Hydrostatic Mud.....	1134	1134	PSI



DIAMOND TESTING
P.O. Box 157
HOISINGTON, KANSAS 67544
(620) 653-7550 • (800) 542-7313
STC 30035.D018

Company L. D. Drilling, Inc. Lease & Well No. Pruitt No. 1-29
Elevation 1836 KB Formation Lansing "B" Effective Pay -- Ft. Ticket No. P018
Date 3-15-09 Sec. 29 Twp. 26S Range 11W County Pratt State Kansas

Test Approved By Kim B. Shoemaker Diamond Representative Paul Schilowsky

Formation Test No. 2 Interval Tested from 3,644 ft. to 3,670 ft. Total Depth 3,670 ft.

Packer Depth 3,639 ft. Size 6 3/4 in. Packer Depth -- ft. Size -- in.

Packer Depth 3,644 ft. Size 6 3/4 in. Packer Depth -- ft. Size -- in.

Depth of Selective Zone Set ft.

Top Recorder Depth (Inside) 3,634 ft. Recorder Number 30035 Cap. 5,000 psi

Bottom Recorder Depth (Outside) 3,667 ft. Recorder Number 13387 Cap. 3,900 psi

Below Straddle Recorder Depth ft. Recorder Number Cap. psi

Drilling Contractor L. D. Drilling, Inc. - Rig 1 Drill Collar Length -- ft. I.D. -- in.

Mud Type Chemical Viscosity 52 Weight Pipe Length -- ft. I.D. -- in.

Weight 8.6 Water Loss 8.8 cc. Drill Pipe Length 3,619 ft. I.D. 3 1/2 in.

Chlorides 1,000 P.P.M. Test Tool Length 25 ft. Tool Size 3 1/2 - IF in.

Jars: Make Sterling Serial Number Not Run Anchor Length 26 ft. Size 4 1/2 - FH in.

Did Well Flow? No Reversed Out No Surface Choke Size 1 in. Bottom Choke Size 5/8 in.

Main Hole Size 7 7/8 in. Tool Joint Size 4 1/2 - XH in.

Blow: 1st Open: Strong blow, building. Off bottom of bucket in 2 1/2 mins. Weak, surface blow back during shut-in.
2nd Open: Strong blow, building. Off bottom of bucket instantly. Weak, surface blow back during shut-in.

Recovered 1,540 ft. of gas in pipe

Recovered 92 ft. of gas & oil cut watery mud = .943920 bbls. (Grind out: 20%-gas; 30%-oil; 15%-water; 35%-mud)

Recovered 62 ft. of gas & oil cut muddy water = .636120 bbls. (Grind out: 20%-gas; 15%-oil; 20%-mud; 45%-water)

Recovered 154 ft. of TOTAL FLUID = 1.580040 bbls.

Recovered ft. of

Remarks Tool Sample Grind Out: 15%-oil; 20%-gas; 20%-mud; 45%-water

RECEIVED

NOV 02 2009

KCC WICHITA

Time Set Packer(s) 9:25 A.M. Time Started Off Bottom 12:25 P.M. Maximum Temperature 117°

Initial Hydrostatic Pressure (A) 1732 P.S.I.

Initial Flow Period Minutes 30 (B) 33 P.S.I. to (C) 54 P.S.I.

Initial Closed In Period Minutes 45 (D) 920 P.S.I.

Final Flow Period Minutes 45 (E) 58 P.S.I. to (F) 90 P.S.I.

Final Closed In Period Minutes 60 (G) 796 P.S.I.

Final Hydrostatic Pressure (H) 1733 P.S.I.

GENERAL INFORMATION

Client Information:

Company: LD DRLG. CO.
Contact: LD DAVIS
Phone: Fax: e-mail:

Site Information:

Contact: KIM SHOEMAKER
Phone: Fax: e-mail:

Well Information:

Name: PRUITT 1-29
Operator: LD DRLG. CO.
Location-Downhole: DST #2 LAN. B 3644-3670
Location-Surface: SEC.29 / 26S / 11 W

Test Information:

Company: DIAMOND TESTING
Representative: PAUL
Supervisor: KIM SHOEMAKER
Test Type: Drill Stem Test Job Number: P018
Test Unit: NO. 1
Start Date: 2009/03/15 Start Time: 07:51:00
End Date: 2009/03/15 End Time: 15:10:00
Report Date: 2009/03/15 Prepared By: PAUL

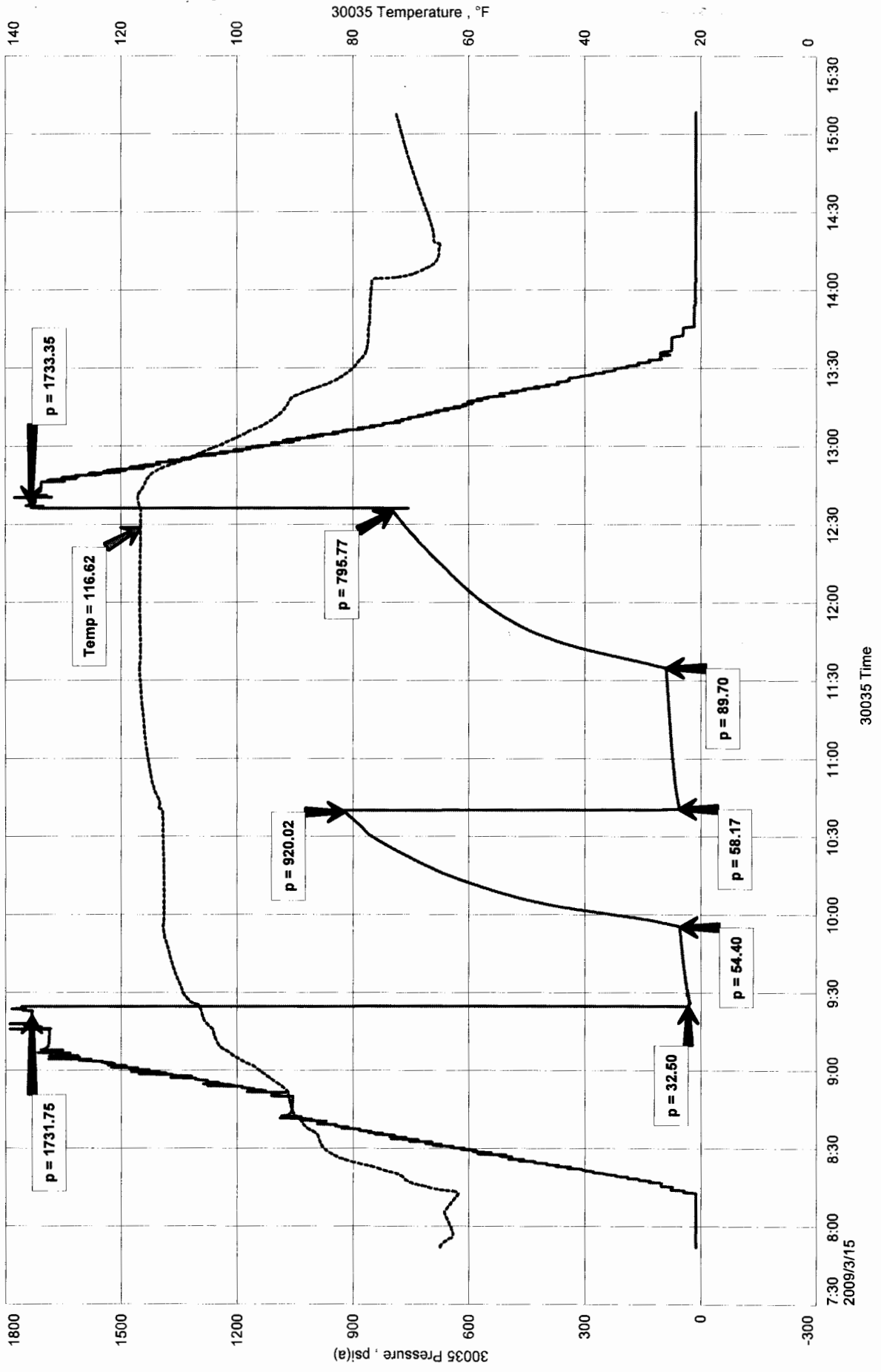
Remarks: Qualified By: KIM

RECOVERED: 92 FT. GOCWM 15% W 20% G 30%O 35% M
62 FT. G&OCMW 15% O 20% G 20%M 45%W
1540 GIP
TOOL SMPL: 15% O 20%G 20%M 45%W
154 FT. OF FLUID TOTAL

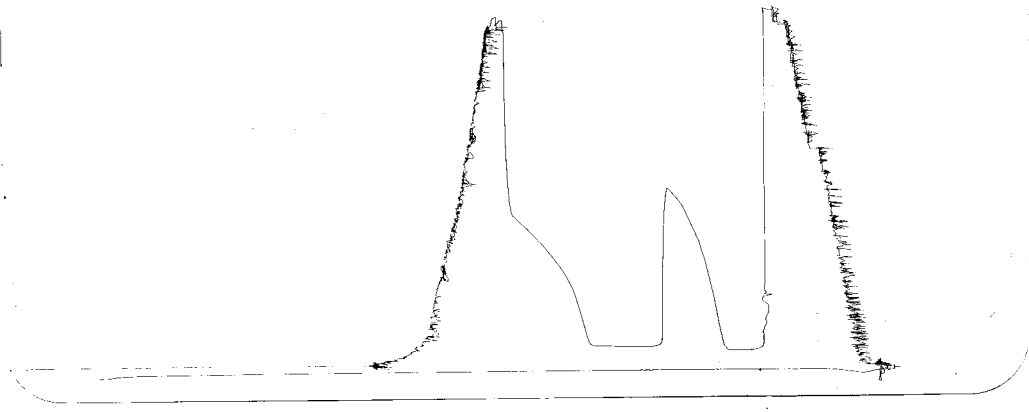
PRUITT 1-29
Formation: DST#2 LAN. B 3644-3670
Job Number: P018

LD DRLG. CO.
DST #2 LAN. B 3644-3670
Start Test Date: 2009/03/15
Final Test Date: 2009/03/15

PRUITT 1-29



DST#2 Lan. B 3644-3670 outside Log 3667



This is an actual photograph of recorder chart.

POINT	PRESSURE		
	Field Reading	Elec. Office Reading	
(A) Initial Hydrostatic Mud	1732	1732	PSI
(B) First Initial Flow Pressure.....	33	33	PSI
(C) First Final Flow Pressure	54	54	PSI
(D) Initial Closed-in Pressure	920	920	PSI
(E) Second Initial Flow Pressure	58	58	PSI
(F) Second Final Flow Pressure.....	90	90	PSI
(G) Final Closed-in Pressure.....	796	796	PSI
(H) Final Hydrostatic Mud	1733	1733	PSI

COMPANY L. D. DRILLING, INC. LEASE AND WELL NO. FULL NO. 1-23 SEC. 23 TWP. 200 RGE. 11W 15SP NO. 1 DATE 3-13



DIAMOND TESTING

P.O. Box 157

HOISINGTON, KANSAS 67544

(620) 653-7550 • (800) 542-7313

STC 30035.D019

Page 1 of 2 Pages

Company L. D. Drilling, Inc. Lease & Well No. Pruitt No. 1-29

Elevation 1836 KB Formation Lansing Effective Pay -- Ft. Ticket No. P019

Date 3-15-09 Sec. 29 Twp. 26S Range 11W County Pratt State Kansas

Test Approved By Kim B. Shoemaker Diamond Representative Paul Schilowsky

Formation Test No. 3 Interval Tested from 3,707 ft. to 3,740 ft. Total Depth 3,740 ft.

Packer Depth 3,702 ft. Size 6 3/4 in. Packer Depth -- ft. Size -- in.

Packer Depth 3,707 ft. Size 6 3/4 in. Packer Depth -- ft. Size -- in.

Depth of Selective Zone Set ft.

Top Recorder Depth (Inside) 3,697 ft. Recorder Number 30035 Cap. 5,000 psi

Bottom Recorder Depth (Outside) 3,737 ft. Recorder Number 13387 Cap. 3,900 psi

Below Straddle Recorder Depth ft. Recorder Number Cap. psi

Drilling Contractor L. D. Drilling, Inc. - Rig 1 Drill Collar Length -- ft. I.D. -- in.

Mud Type Chemical Viscosity 49 Weight Pipe Length -- ft. I.D. -- in.

Weight 9.1 Water Loss 15.2 cc. Drill Pipe Length 3,682 ft. I.D. 3 1/2 in.

Chlorides 12,000 P.P.M. Test Tool Length 25 ft. Tool Size 3 1/2 - IF in.

Jars: Make Sterling Serial Number Not Run Anchor Length 33 ft. Size 4 1/2 - FH in.

Did Well Flow? No Reversed Out No Surface Choke Size 1 in. Bottom Choke Size 5/8 in.

Main Hole Size 7 7/8 in. Tool Joint Size 4 1/2 - XH in.

Blow: 1st Open: Strong blow, building. Off bottom of bucket in 5 mins. Weak, surface blow back during shut-in.

2nd Open: Strong blow. Off bottom of bucket instantly. Weak, surface blow back during shut-in.

Recovered 1,550 ft. of gas in pipe

Recovered 30 ft. of gas & water cut oily mud = .307800 bbls. (Grind out: 5%-gas; 10%-water; 35%-oil; 50%-mud)

Recovered 62 ft. of gassy oil & water cut mud = .636120 bbls. (Grind out: 15%-gas; 20%-oil; 20%-water; 45%-mud)

Recovered 92 ft. of TOTAL FLUID = .943920 bbls.

Recovered ft. of

Remarks Tool Sample Grind Out: 15%-gas; 20%-oil; 20%-water; 45%-mud

RECEIVED

NOV 02 2009

KCC WICHITA

Time Set Packer(s) 12:16 A.M. ~~PM~~ Time Started Off Bottom 3:16 A.M. ~~PM~~ Maximum Temperature 112°

Initial Hydrostatic Pressure (A) 1742 P.S.I.

Initial Flow Period Minutes 30 (B) 28 P.S.I. to (C) 42 P.S.I.

Initial Closed In Period Minutes 45 (D) 1052 P.S.I.

Final Flow Period Minutes 45 (E) 49 P.S.I. to (F) 66 P.S.I.

Final Closed In Period Minutes 60 (G) 1120 P.S.I.

Final Hydrostatic Pressure (H) 1737 P.S.I.

GENERAL INFORMATION

Client Information:

Company: LD DRLG. CO.
Contact: LD DAVIS
Phone: Fax: e-mail:

Site Information:

Contact: KIM SHOEMAKER
Phone: Fax: e-mail:

Well Information:

Name: PRUITT 1-29
Operator: LD DRLG. CO.
Location-Downhole: DST #3 LAN. 3707-3740
Location-Surface: SEC. 29 / 26S / 11W

Test Information:

Company:	DIAMOND TESTING		
Representative:	PAUL		
Supervisor:	KIM SHOEMAKER		
Test Type:	Drill Stem Test	Job Number:	P019
Test Unit:	NO. 1		
Start Date:	2009/03/15	Start Time:	22:12:00
End Date:	2009/03/16	End Time:	05:34:00
Report Date:	2009/03/16	Prepared By:	PAUL
		Qualified By:	KIM

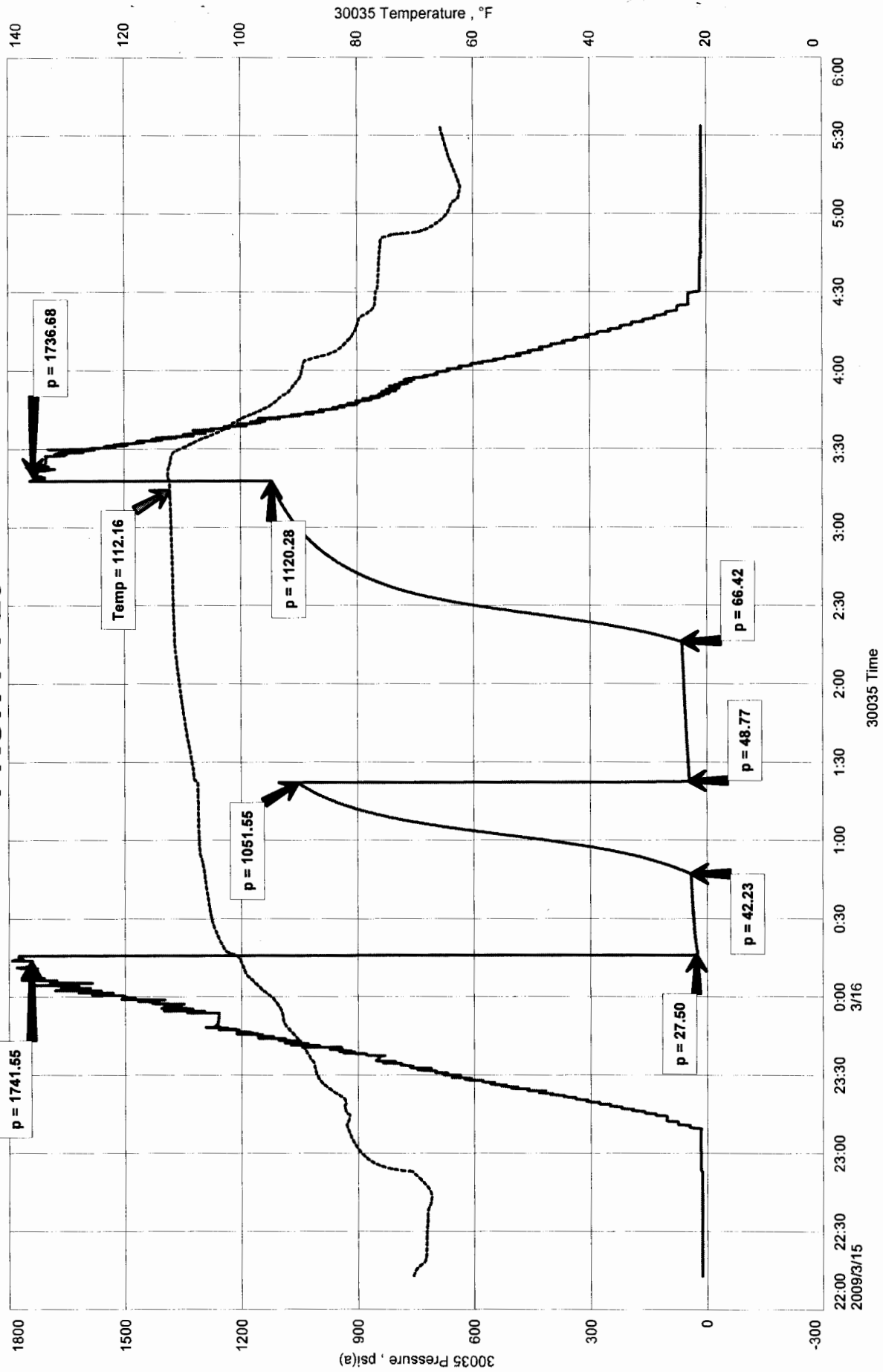
Remarks:

RECOVERED: 30 FT. GWCOM 5%G 10%W 35%O 50%M
62 FT. GOWCM 15%G 20%O 20%W 45%M
1550 FT. GIP
TOOL SMPL: 15%G 20%O 20%W 45%M
92 FT. OF FLUID TOTAL

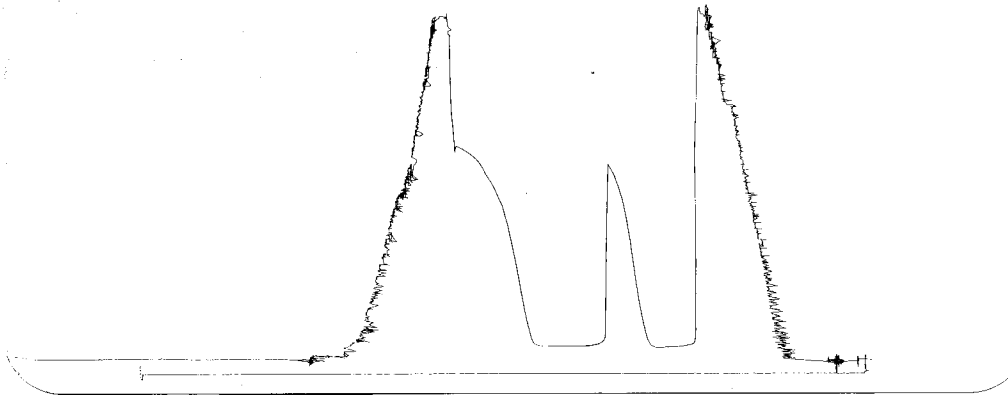
LD DRLG. CO.
DST #3 LAN. 3707-3740
Start Test Date: 2009/03/15
Final Test Date: 2009/03/16

PRUITT 1-29
Formation: DST #3 LAN, 3707-3740
Job Number: P019

PRUITT 1-29

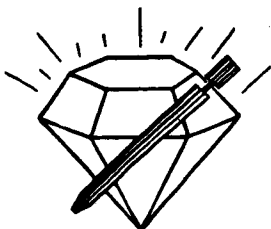


DSY #3 Lan. 3207-3240 13387 Outside
 LOC. 3737



This is an actual photograph of recorder chart.

POINT	PRESSURE		PSI
	Field Reading	Elec. Office Reading	
(A) Initial Hydrostatic Mud	1742	1742	PSI
(B) First Initial Flow Pressure.....	28	28	PSI
(C) First Final Flow Pressure	42	42	PSI
(D) Initial Closed-in Pressure	1052	1052	PSI
(E) Second Initial Flow Pressure.....	49	49	PSI
(F) Second Final Flow Pressure.....	66	66	PSI
(G) Final Closed-in Pressure.....	1120	1120	PSI
(H) Final Hydrostatic Mud.....	1737	1737	PSI



DIAMOND TESTING

P.O. Box 157

HOISINGTON, KANSAS 67544

(620) 653-7550 • (800) 542-7313

STC 30035.D020

Company L. D. Drilling, Inc. Lease & Well No. Pruitt No. 1-29

Elevation 1836 KB Formation Lansing "H"- "J" Effective Pay -- Ft. Ticket No. P020

Date 3-16-09 Sec. 29 Twp. 26S Range 11W County Pratt State Kansas

Test Approved By Kim B. Shoemaker Diamond Representative Paul Schilowsky

Formation Test No. 4 Interval Tested from 3,784 ft. to 3,840 ft. Total Depth 3,840 ft.

Packer Depth 3,779 ft. Size 6 3/4 in. Packer Depth -- ft. Size -- in.

Packer Depth 3,784 ft. Size 6 3/4 in. Packer Depth -- ft. Size -- in.

Depth of Selective Zone Set ft.

Top Recorder Depth (Inside) 3,774 ft. Recorder Number 30035 Cap. 5,000 psi

Bottom Recorder Depth (Outside) 3,837 ft. Recorder Number 13387 Cap. 3,900 psi

Below Straddle Recorder Depth ft. Recorder Number Cap. psi

Drilling Contractor L. D. Drilling, Inc. - Rig 1 Drill Collar Length -- ft. I.D. -- in.

Mud Type Chemical Viscosity 47 Weight Pipe Length -- ft. I.D. -- in.

Weight 8.9 Water Loss 9.2 cc. Drill Pipe Length 3,759 ft. I.D. 3 1/2 in.

Chlorides 7,000 P.P.M. Test Tool Length 25 ft. Tool Size 3 1/2 - IF in.

Jars: Make Sterling Serial Number Not Run Anchor Length 25' perf. w/31' drill pipe Size 4 1/2 - FH in.

Did Well Flow? No Reversed Out No Surface Choke Size 1 in. Bottom Choke Size 5/8 in.

Main Hole Size 7 7/8 in. Tool Joint Size 4 1/2 - XH in.

Blow: 1st Open: Good blow, building. Off bottom of bucket in 23 mins. No blow back during shut-in.

2nd Open: Good blow, building. Off bottom of bucket in 28 mins. No blow back during shut-in.

Recovered 253 ft. of slightly oil specked muddy water = 2.595780 bbls. (Grind out: 1%-oil; 49%-mud; 50%-water)

Recovered ft. of

Recovered ft. of

Recovered ft. of

RECEIVED
NOV 02 2009
KCC WICHITA

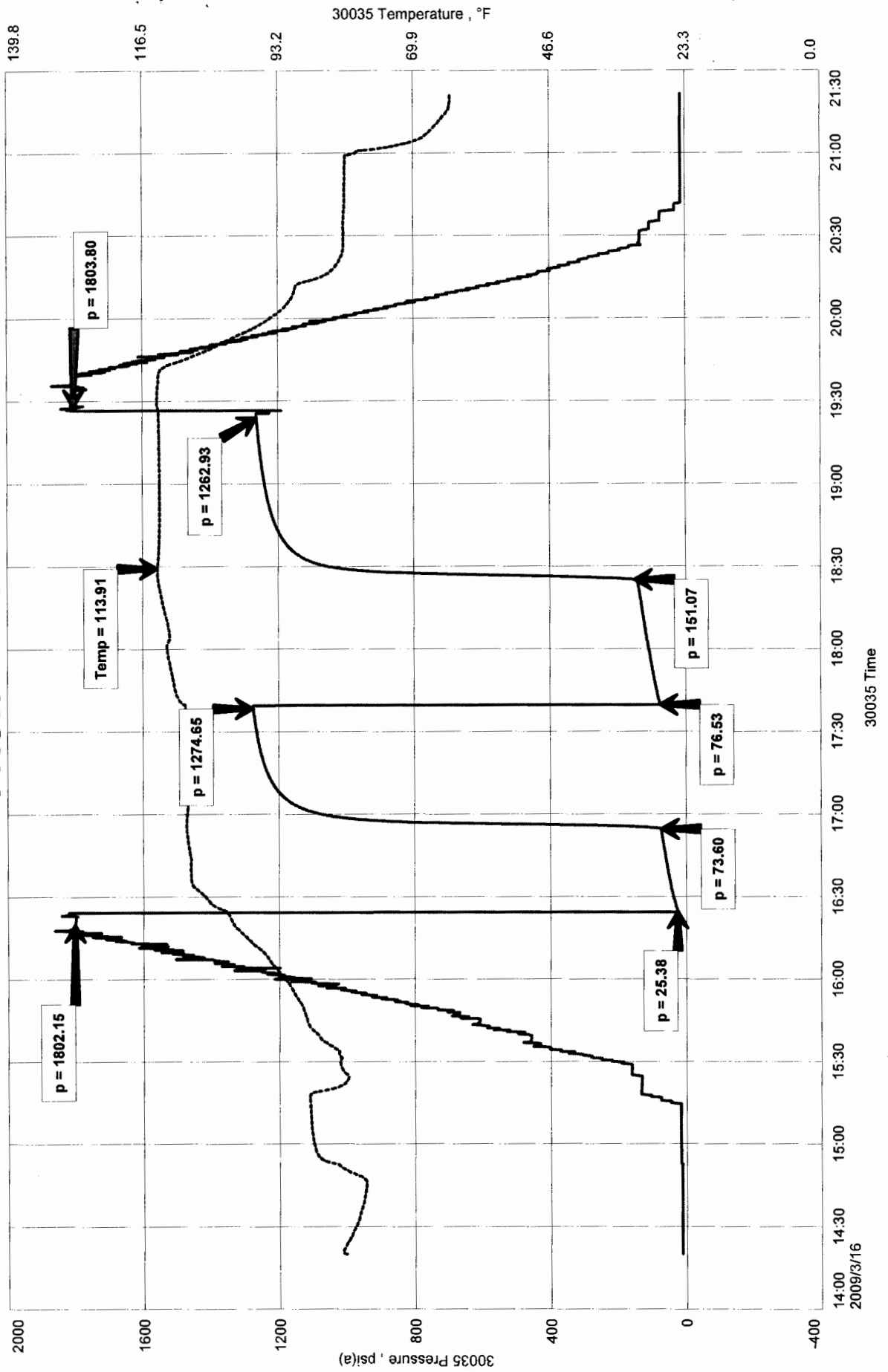
Remarks Tool Sample Grind Out: 1%-oil; 99%-water

Time Set Packer(s)	<u>4:24</u> <u>AM.</u> P.M.	Time Started Off Bottom	<u>7:24</u> <u>AM.</u> P.M.	Maximum Temperature	<u>114°</u>
Initial Hydrostatic Pressure	(A)	<u>1802</u>	P.S.I.		
Initial Flow Period	Minutes <u>30</u>	(B)	<u>25</u>	P.S.I. to (C)	<u>74</u> P.S.I.
Initial Closed In Period	Minutes <u>45</u>	(D)	<u>1275</u>	P.S.I.	
Final Flow Period	Minutes <u>45</u>	(E)	<u>77</u>	P.S.I. to (F)	<u>151</u> P.S.I.
Final Closed In Period	Minutes <u>60</u>	(G)	<u>1263</u>	P.S.I.	
Final Hydrostatic Pressure	(H)	<u>1803</u>	P.S.I.		

PRUITT 1-29
 Formation: DST#4 LAN. H&J 3784-3840
 Job Number: P020

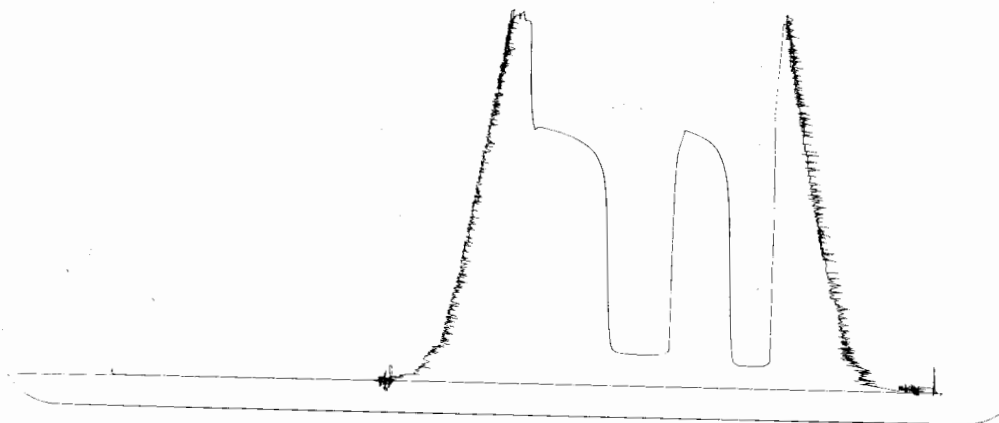
LD DRILG. CO.
 DST #4 LAN. H&J 3784-3840
 Start Test Date: 2009/03/16
 Final Test Date: 2009/03/16

PRUITT 1-29



15774 - Lansing H&J Outside
3784-3840

LOG. 3837



This is an actual photograph of recorder chart.

POINT	PRESSURE		PSI
	Field Reading	Elec. Office Reading	
(A) Initial Hydrostatic Mud	1802	1802	PSI
(B) First Initial Flow Pressure.....	25	25	PSI
(C) First Final Flow Pressure	74	74	PSI
(D) Initial Closed-in Pressure	1275	1275	PSI
(E) Second Initial Flow Pressure	77	77	PSI
(F) Second Final Flow Pressure.....	151	151	PSI
(G) Final Closed-in Pressure.....	1263	1263	PSI
(H) Final Hydrostatic Mud	1804	1804	PSI

LUMIN RINT LUMIN RINT LUMIN RINT



DIAMOND TESTING

P.O. Box 157
HOISINGTON, KANSAS 67544
(620) 653-7550 • (800) 542-7313
STC 30035.D021

Company L. D. Drilling, Inc. Lease & Well No. Pruitt No. 1-29

Elevation 1836 KB Formation Lansing/Kansas City/Swope/Hertha Effective Pay -- Ft. Ticket No. P021

Date 3-17-09 Sec. 29 Twp. 26S Range 11W County Pratt State Kansas

Test Approved By Kim B. Shoemaker Diamond Representative Paul Schilowsky

Formation Test No. 5 Interval Tested from 3,880 ft. to 3,965 ft. Total Depth 3,965 ft.

Packer Depth 3,875 ft. Size 6 3/4 in. Packer Depth -- ft. Size -- in.

Packer Depth 3,880 ft. Size 6 3/4 in. Packer Depth -- ft. Size -- in.

Depth of Selective Zone Set ft.

Top Recorder Depth (Inside) 3,870 ft. Recorder Number 30035 Cap. 5,000 psi

Bottom Recorder Depth (Outside) 3,962 ft. Recorder Number 13387 Cap. 3,900 psi

Below Straddle Recorder Depth ft. Recorder Number Cap. psi

Drilling Contractor L. D. Drilling, Inc. - Rig 1 Drill Collar Length -- ft. I.D. -- in.

Mud Type Chemical Viscosity 45 Weight Pipe Length -- ft. I.D. -- in.

Weight 9.1 Water Loss 10.8 cc. Drill Pipe Length 3,855 ft. I.D. 3 1/2 in.

Chlorides 7,600 P.P.M. Test Tool Length 25 ft. Tool Size 3 1/2 - IF in.

Jars: Make Sterling Serial Number Not Run Anchor Length 23' perf. w/62' drill pipe Size 4 1/2 - FH in.

Did Well Flow? No Reversed Out No Surface Choke Size 1 in. Bottom Choke Size 5/8 in.

Main Hole Size 7 7/8 in. Tool Joint Size 4 1/2 - XH in.

Blow: 1st Open: Strong blow, building. Off bottom of bucket in 2 mins. No blow back during shut-in.

2nd Open: Strong blow. Off bottom of bucket instantly. No blow back during shut-in.

Recovered 1,200 ft. of gas in pipe

Recovered 65 ft. of heavy oil cut watery mud = .666900 bbls. (Grind out: 15%-oil; 25%-water; 60%-mud)

Recovered 62 ft. of slightly oil cut muddy water = .636120 bbls. (Grind out: 5%-oil; 25%-mud; 70%-water)

Recovered 127 ft. of TOTAL FLUID = 1.303020 bbls.

Recovered ft. of

Remarks Tool Sample Grind Out: 5%-oil; 10%-mud; 85%-water

RECEIVED

NOV 02 2009

KCC WICHITA

Time Set Packer(s) 3:57 ^{XXX} P.M. Time Started Off Bottom 6:57 ^{XXM} P.M. Maximum Temperature 115°

Initial Hydrostatic Pressure (A) 1856 P.S.I.

Initial Flow Period Minutes 30 (B) 40 P.S.I. to (C) 60 P.S.I.

Initial Closed In Period Minutes 45 (D) 478 P.S.I.

Final Flow Period Minutes 45 (E) 73 P.S.I. to (F) 79 P.S.I.

Final Closed In Period Minutes 60 (G) 482 P.S.I.

Final Hydrostatic Pressure (H) 1854 P.S.I.

GENERAL INFORMATION

Client Information:

Company: LD DRLG. CO.

Contact: LD DAVIS

Phone: Fax: e-mail:

Site Information:

Contact: KIM SHOEMAKER

Phone: Fax: e-mail:

Well Information:

Name: PRUITT 1-29

Operator: LD DRLG. CO.

Location-Downhole: DST #5 L/KC SWOPE/HERTHA 3880-3965

Location-Surface: SEC. 29 / 26S / 11W

Test Information:

Company: DIAMOND TESTING

Representative: PAUL

Supervisor: KIM SHOEMAKER

Test Type: Drill Stem Test Job Number: P020

Test Unit: NO. 1

Start Date: 2009/03/17 Start Time: 13:48:00

End Date: 2009/03/17 End Time: 21:08:00

Report Date: 2009/03/17 Prepared By: PAUL

Qualified By: KIM

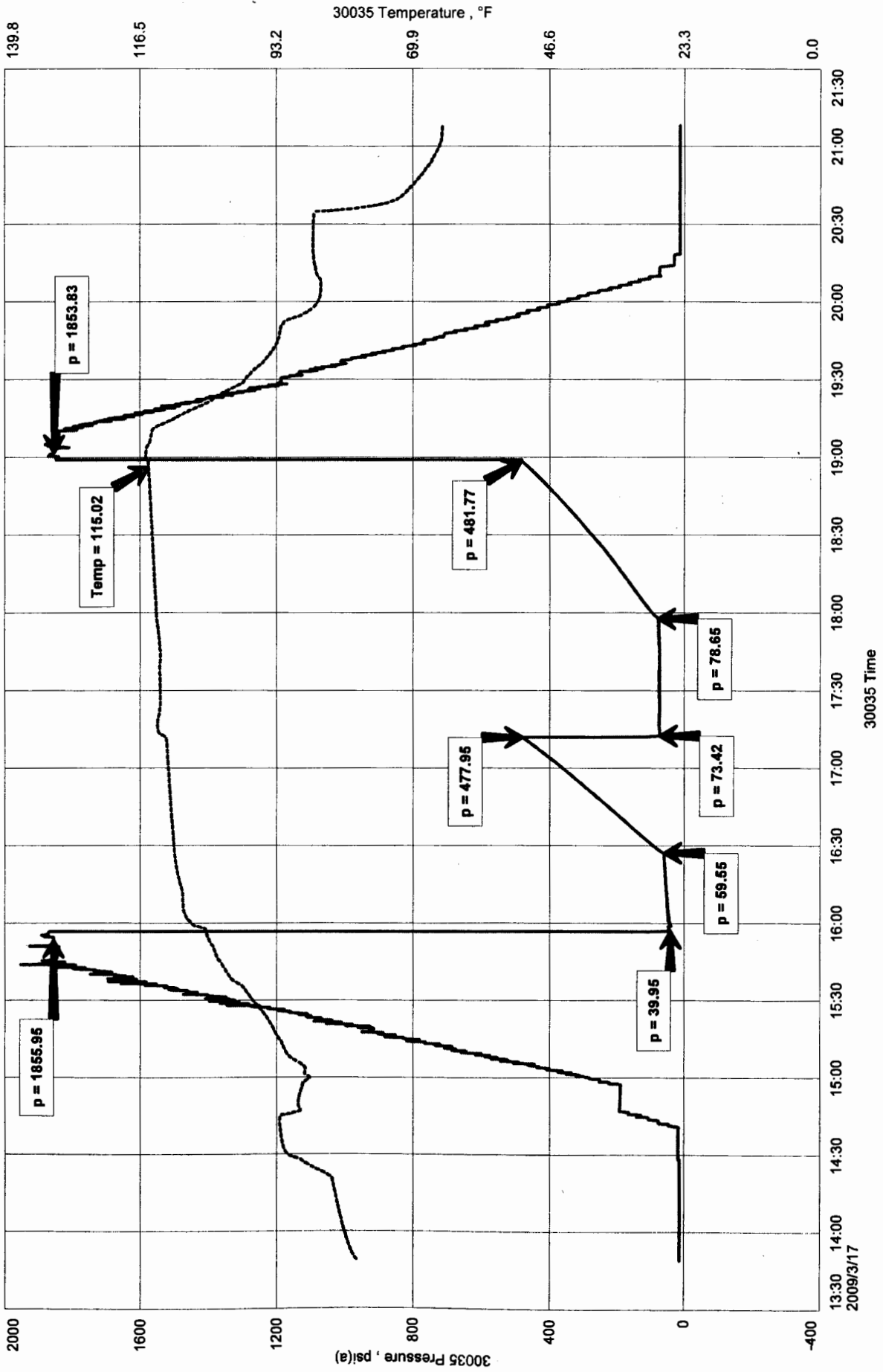
Remarks:

RECOVERED: 65 FT. HOCWM
62 FT. COCMW
1200 FT. GIP
TOOL SMPL: 5%O / 10%M / 85%W
127 FT. OF FLUID TOTAL

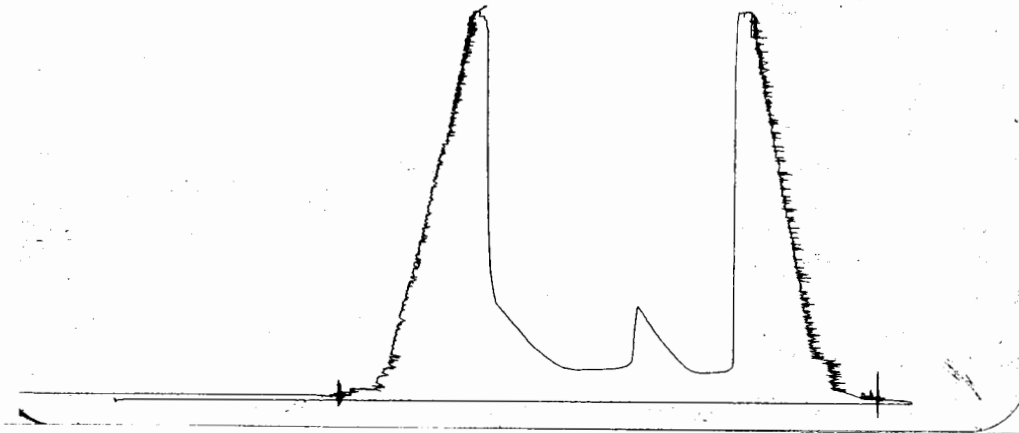
LD DRLG. CO.
DST #5 L/KC SWOPE/HERTHA 3880-3965
Start Test Date: 2009/03/17
Final Test Date: 2009/03/17

PRUITT 1-29
Formation: DST #5 L/KC SWOPE/HERTHA 3880-3965
Job Number: P020

PRUITT 1-29



057 #5 L/KC Swape-Hertha 3680-3965 outside Loc. 3962



This is an actual photograph of recorder chart.

POINT	PRESSURE		
	Field Reading	Elec. Office Reading	
(A) Initial Hydrostatic Mud	1856	1856	PSI
(B) First Initial Flow Pressure.....	40	40	PSI
(C) First Final Flow Pressure	60	60	PSI
(D) Initial Closed-in Pressure	478	478	PSI
(E) Second Initial Flow Pressure	73	73	PSI
(F) Second Final Flow Pressure.....	79	79	PSI
(G) Final Closed-in Pressure.....	482	482	PSI
(H) Final Hydrostatic Mud	1854	1854	PSI



DIAMOND TESTING
P.O. Box 157
HOISINGTON, KANSAS 67544
(620) 653-7550 • (800) 542-7313
STC 30035.D022

Company L. D. Drilling, Inc. Lease & Well No. Pruitt No. 1-29

Elevation 1836 KB Formation Mississippi Effective Pay -- Ft. Ticket No. P022

Date 3-18-09 Sec. 29 Twp. 26S Range 11W County Pratt State Kansas

Test Approved By Kim B. Shoemaker Diamond Representative Paul Schilowsky

Formation Test No. 6 Interval Tested from 4,045 ft. to 4,115 ft. Total Depth 4,115 ft.

Packer Depth 4,040 ft. Size 6 3/4 in. Packer Depth -- ft. Size -- in.

Packer Depth 4,045 ft. Size 6 3/4 in. Packer Depth -- ft. Size -- in.

Depth of Selective Zone Set ft.

Top Recorder Depth (Inside) 4,035 ft. Recorder Number 30035 Cap. 5,000 psi

Bottom Recorder Depth (Outside) 4,112 ft. Recorder Number 13387 Cap. 3,900 psi

Below Straddle Recorder Depth ft. Recorder Number Cap. psi

Drilling Contractor L. D. Drilling, Inc. - Rig 1 Drill Collar Length -- ft. I.D. -- in.

Mud Type Chemical Viscosity 48 Weight Pipe Length -- ft. I.D. -- in.

Weight 9.3 Water Loss 10.4 cc. Drill Pipe Length 4,020 ft. I.D. 3 1/2 in.

Chlorides 8,000 P.P.M. Test Tool Length 25 ft. Tool Size 3 1/2 - IF in.

Jars: Make Sterling Serial Number Not Run Anchor Length 39' perf. w/31' drill pipe Size 4 1/2 - FH in.

Did Well Flow? No Reversed Out No Surface Choke Size 1 in. Bottom Choke Size 5/8 in.

Main Hole Size 7 7/8 in. Tool Joint Size 4 1/2 - XH in.

Blow: 1st Open: Good blow, building. Off bottom of bucket in 20 1/2 mins. No blow back during shut-in.

2nd Open: Fair blow, building to 8 ins. No blow back during shut-in.

Recovered 25 ft. of slightly gas cut mud = .256500 bbls.

Recovered ft. of

Recovered ft. of

Recovered ft. of

Recovered ft. of

Remarks Tool Sample Grind Out: 2%-gas; 98%-mud

RECEIVED
NOV 2 2009
KCC HOISINGTON

Time Set Packer(s) 11:15 ^{A.M.}/_{P.M.} Time Started Off Bottom 2:45 ^{XX.}/_{P.M.} Maximum Temperature 116°

Initial Hydrostatic Pressure (A) 1941 P.S.I.

Initial Flow Period Minutes 30 (B) 29 P.S.I. to (C) 35 P.S.I.

Initial Closed In Period Minutes 60 (D) 90 P.S.I.

Final Flow Period Minutes 45 (E) 29 P.S.I. to (F) 34 P.S.I.

Final Closed In Period Minutes 75 (G) 77 P.S.I.

Final Hydrostatic Pressure (H) 1940 P.S.I.

GENERAL INFORMATION

Client Information:

Company: LD DRLG. CO.

Contact: LD DAVIS

Phone: Fax: e-mail:

Site Information:

Contact: KIM SHOEMAKER

Phone: Fax: e-mail:

Well Information:

Name: PRUITT 1-29

Operator: LD DRLG. CO.

Location-Downhole: DST#6 MISS. 4045-4115

Location-Surface: SEC.29 / 26S / 11W

Test Information:

Company: DIAMOND TESTING

Representative: PAUL

Supervisor: KIM SHOEMAKER

Test Type: Drill Stem Test Job Number: P022

Test Unit: NO. 1

Start Date: 2009/03/18 Start Time: 09:20:00

End Date: 2009/03/18 End Time: 14:55:00

Report Date: 2009/03/18 Prepared By: PAUL

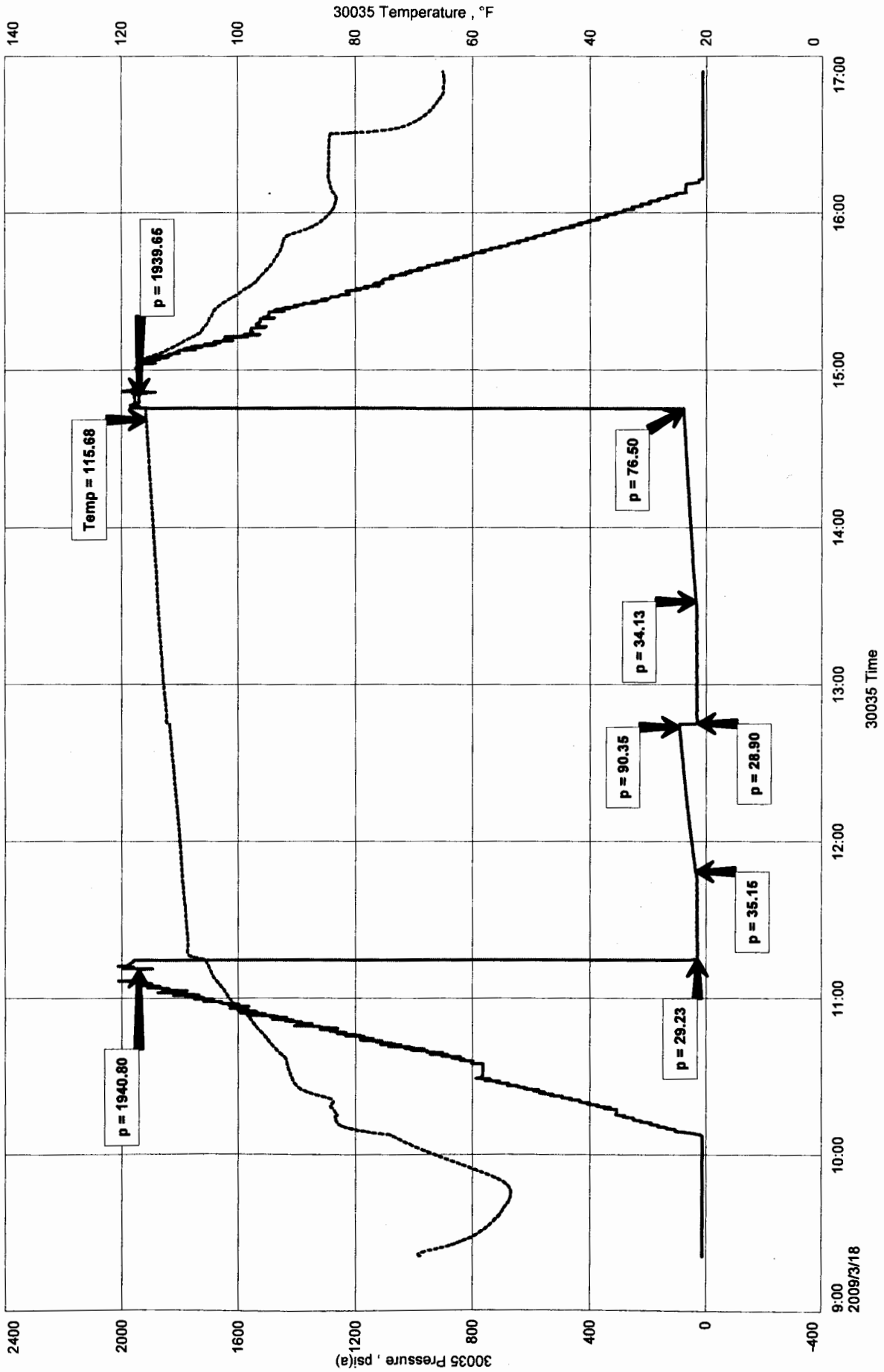
Remarks: Qualified By: KIM

RECOVERED:25' SGCM
TOOL SMPL: 2% G / 98% M
25' OF FLUID TOTAL

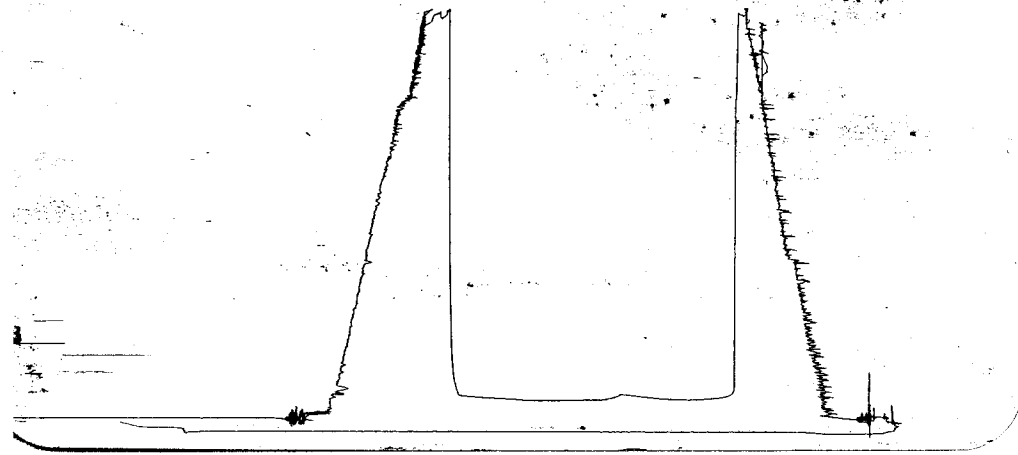
LD DRLG. CO.
DST#6 MISS. 4045-4115
Start Test Date: 2009/03/18
Final Test Date: 2009/03/18

PRUITT 1-29
Formation: DST # 6 MISS. 4045-4115
Job Number: P022

PRUITT 1-29



DS446 Miss 4045-4115 13387 Outside LOC 4112



This is an actual photograph of recorder chart.

POINT	PRESSURE		PSI
	Field Reading	Elec. Office Reading	
(A) Initial Hydrostatic Mud	1941	1941	PSI
(B) First Initial Flow Pressure.....	29	29	PSI
(C) First Final Flow Pressure	35	35	PSI
(D) Initial Closed-in Pressure	90	90	PSI
(E) Second Initial Flow Pressure.....	29	29	PSI
(F) Second Final Flow Pressure.....	34	34	PSI
(G) Final Closed-in Pressure.....	77	77	PSI
(H) Final Hydrostatic Mud.....	1940	1940	PSI



DIAMOND TESTING
P.O. Box 157
HOISINGTON, KANSAS 67544
(620) 653-7550 • (800) 542-7313
STC 30035.D023

Company L. D. Drilling, Inc. Lease & Well No. Pruitt No. 1-29
Elevation 1836 KB Formation Viola Effective Pay -- Ft. Ticket No. P023
Date 3-19-09 Sec. 29 Twp. 26S Range 11W County Pratt State Kansas
Test Approved By Kim B. Shoemaker Diamond Representative Paul Schilowsky

Formation Test No. 7 Interval Tested from 4,259 ft. to 4,278 ft. Total Depth 4,278 ft.
Packer Depth 4,254 ft. Size 6 3/4 in. Packer Depth -- ft. Size -- in.
Packer Depth 4,259 ft. Size 6 3/4 in. Packer Depth -- ft. Size -- in.
Depth of Selective Zone Set ft.

Top Recorder Depth (Inside) 4,249 ft. Recorder Number 30035 Cap. 5,000 psi
Bottom Recorder Depth (Outside) 4,275 ft. Recorder Number 13387 Cap. 3,900 psi
Below Straddle Recorder Depth ft. Recorder Number Cap. psi

Drilling Contractor L. D. Drilling, Inc. - Rig 1 Drill Collar Length -- ft. I.D. -- in.
Mud Type Chemical Viscosity 45 Weight Pipe Length -- ft. I.D. -- in.
Weight 9.0 Water Loss 10.4 cc. Drill Pipe Length 4,234 ft. I.D. 3 1/2 in.
Chlorides 8,000 P.P.M. Test Tool Length 25 ft. Tool Size 3 1/2 - IF in.
Jars: Make Sterling Serial Number Not Run Anchor Length 19 ft. Size 4 1/2 - FH in.
Did Well Flow? Yes Reversed Out No Surface Choke Size 1 in. Bottom Choke Size 5/8 in.
Main Hole Size 7 7/8 in. Tool Joint Size 4 1/2 - XH in.

Blow: 1st Open: Off bottom of bucket instantly. Gas to surface in 2 mins. Strong blow off bottom of bucket during shut-in. Gas gauged 2,558,000 CF/D.
2nd Open: Fluid to surface in 15 mins. Strong blow off bottom of bucket during shut-in. Gas gauged 2,012,000 CF/D.

Recovered 3,795 ft. of gas in pipe
Recovered 253 ft. of gas cut oil = 2.595780 bbls. (Grind out: 100%-oil)
Recovered 186 ft. of gassy water = 1.908360 bbls. (Grind out: 5%-gas; 95%-water) Chlorides: 94,000 Ppm
Recovered 439 ft. of TOTAL FLUID = 4.504140 bbls.
Recovered ft. of
Remarks Tool Sample Grind Out: 5%-gas; 95%-water

RECEIVED

NOV 02 2009

KCC WICHITA

Time Set Packer(s) 10:18 A.M. Time Started Off Bottom 1:18 P.M. Maximum Temperature 133°
Initial Hydrostatic Pressure (A) 2079 P.S.I.
Initial Flow Period Minutes 30 (B) 525 P.S.I. to (C) 594 P.S.I.
Initial Closed In Period Minutes 45 (D) 855 P.S.I.
Final Flow Period Minutes 45 (E) 492 P.S.I. to (F) 606 P.S.I.
Final Closed In Period Minutes 60 (G) 853 P.S.I.
Final Hydrostatic Pressure (H) 2081 P.S.I.

GENERAL INFORMATION

Client Information:

Company: LD DRLG. CO.

Contact: LD DAVIS

Phone: Fax: e-mail:

Site Information:

Contact: KIM SHOEMAKER

Phone: Fax: e-mail:

Well Information:

Name: PRUITT 1-29

Operator: LD DRLG. CO.

Location-Downhole: DST #7 VIOLA 4259-4278

Location-Surface: SEC. 29 / 26S / 11W

Test Information:

Company: DIAMOND TESTING

Representative: PAUL

Supervisor: KIM SHOEMAKER

Test Type: Drill Stem Test Job Number: P023

Test Unit: NO. 1

Start Date: 2009/03/19 Start Time: 08:32:00

End Date: 2009/03/19 End Time: 16:29:00

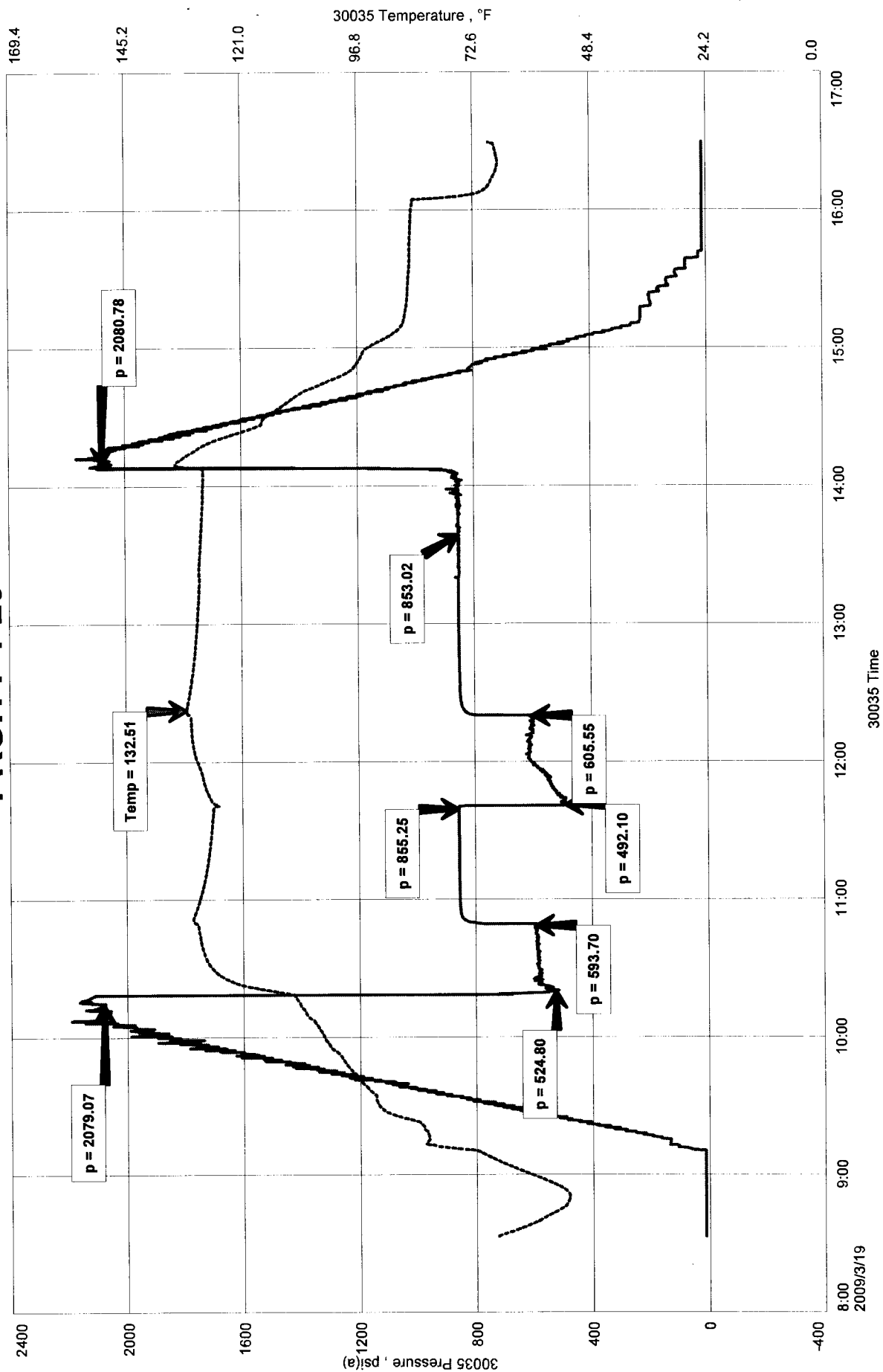
Report Date: 2009/03/19 Prepared By: PAUL

Qualified By: KIM

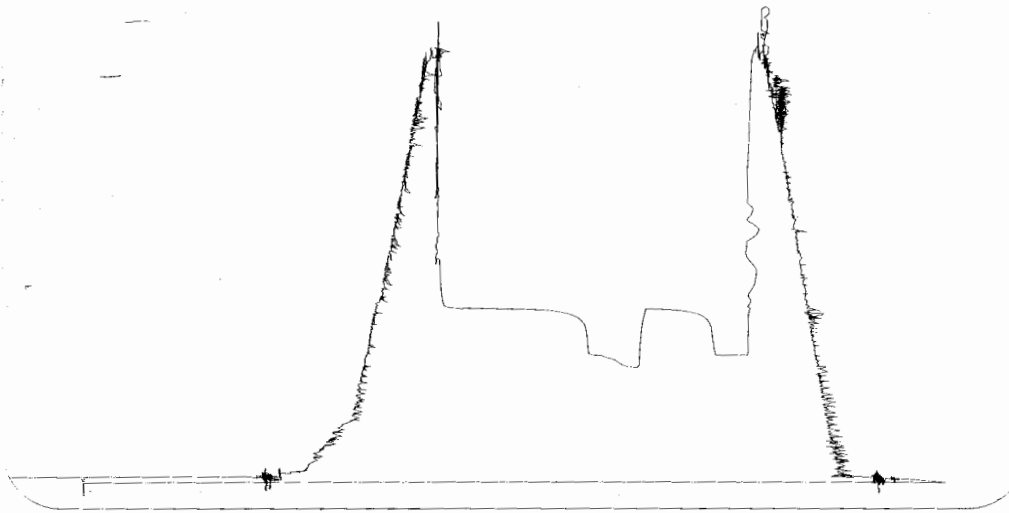
Remarks:

RECOVERED: 253' GCO 100%
186' GW 5%G 95%W
TOOL SMPL:5% G / 95% W
439' OF FLUID TOTAL
3795' GIP

PRUITT 1-29



DST #7 Viola 4259-4278 Outside Loc. 4275
13387



This is an actual photograph of recorder chart.

POINT	PRESSURE		PSI
	Field Reading	Elec. Office Reading	
(A) Initial Hydrostatic Mud	2079	2079	PSI
(B) First Initial Flow Pressure.....	525	525	PSI
(C) First Final Flow Pressure	594	594	PSI
(D) Initial Closed-in Pressure	855	855	PSI
(E) Second Initial Flow Pressure.....	492	492	PSI
(F) Second Final Flow Pressure.....	606	606	PSI
(G) Final Closed-in Pressure.....	853	853	PSI
(H) Final Hydrostatic Mud	2081	2081	PSI