

15-151-20763

KANSAS

WELL COMPLETION REPORT AND
DRILLER'S LOG

Renewed 2/26/82
State Geological Survey
20,763
WICHITA BRANCH

S. 1 T. 26 R. 12W E W

API No. 15 — 151 —
County

Loc. SE SE SE

County Pratt

Operator
Kansas Oil Corporation

Address
250 N. Rock Rd., Suite 300, Wichita, KS 67208

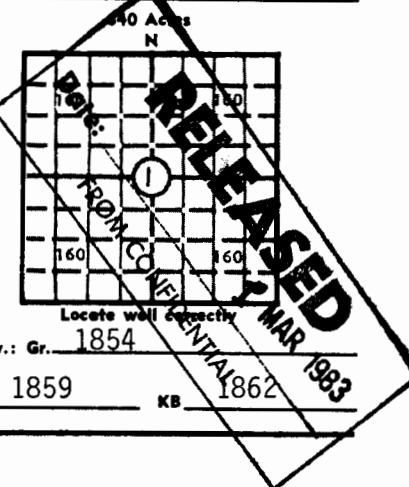
Well No. #1 Lease Name Hoskinson

Footage Location
330 feet from (S) line 330 feet from (E) line

Principal Contractor Spartan Drilling Geologist Paul Laird

Spud Date 11-17-80 Date Completed 3-4-81 Total Depth 4170' P.B.T.D.

Directional Deviation None Oil and/or Gas Purchaser Clear Creek



CASING RECORD

Report of all strings set — surface, intermediate, production, etc.

Purpose of string	Size hole drilled	Size casing set (in O.D.)	Weight lbs./ft.	Setting depth	Type cement	Sacks	Type and percent additives
Surface		8 5/8"		320'	common	225	2% gel 3% CaCl
Production		4 1/2"		4166'	60-50 posmix	250	10% salt

LINER RECORD

PERFORATION RECORD

Top, ft.	Bottom, ft.	Sacks cement	Shots per ft.	Size & type	Depth interval
			2		4129-32
			2		3626-28
Size	Setting depth	Pecker set at			

ACID, FRACTURE, SHOT, CEMENT SQUEEZE RECORD

Amount and kind of material used	Depth interval treated
GTS. SION. ONFU 2000' from surface. 1 pull of 300' fluid - all oil. Swb. 12.08 bbls/hr.	4129-32
Acid w/250 gal. 15% MCA. Swb. 4.56 bbls/hr, 27% oil. Swb. 2.75 BPH, 65% oil.	3626-28

INITIAL PRODUCTION

Date of first production 3-4-81	Producing method (flowing, pumping, gas lift, etc.) pumping
RATE OF PRODUCTION PER 24 HOURS	Oil 40 bbls. Gas MCF 70 bbls. Gas-oil ratio CFPB
Disposition of gas (vented, used on lease or sold)	Producing interval (s) 4129-32, 3626-28

INSTRUCTIONS: As provided in KCC Rule 82-2-125, within 90 days after completion of a well, one completed copy of this Drillers Log shall be transmitted to the State Geological Survey of Kansas, 4150 Monroe Street, Wichita, Kansas 67209. Copies of this form are available from the Conservation Division, State Corporation Commission, 245 No. Water, Wichita, Kansas 67202. Phone AC 316-522-2206. If confidential custody is desired, please note Rule 82-2-125. Drillers Logs will be on open file in the Oil and Gas Division, State Geological Survey of Kansas, Lawrence, Kansas 66044.

Operator
Kansas Oil Corporation

DESIGNATE TYPE OF COMP.: OIL, GAS,
DRY HOLE, SWDW, ETC.:

Well No. #1 Lease Name Hoskinson

Oil

S 1 T 26 R 12 W E W

WELL LOG

Show all important zones of porosity and contents thereof; cored intervals, and all drill-stem tests, including depth interval tested, cushion used, time tool open, flowing and shut-in pressures, and recoveries.

SHOW GEOLOGICAL MARKERS, LOGS RUN, OR OTHER DESCRIPTIVE INFORMATION.

FORMATION DESCRIPTION, CONTENTS, ETC.	TOP	BOTTOM	NAME	DEPTH
Heebner	3402			
Douglas Sd.	3436			
Douglas Sh.	3499			
Brown Lime	3579			
Lansing	3605			
DST#1, 3617-35', Lansing "B" zone, 30-60-30-60, GTS 5", GA 16 MCFD/5" increasing to 36 MCFD /30", 2nd open gauged 23 MCFD/5" and stabilized @ 36 MCFD. Rec. 90' HOG&WCM, 120' HGW&MCO, 60' OCW, 60' W. IHP 1754 psi., IFP 75-86 psi., ISIP 1291 psi., FFP 86-108 psi., FSIP 1269 psi., FHP 1733 psi., BHT 106°F.				
DST#2, 3648-68', Lansing "C" zone, 30-30-30-30, Rec. 65' M. IHP 1779 psi., IFP 88-100 psi., ISIP 1151 psi., FFP 111-100 psi., FSIP 577 psi., FHP 1779 psi., BHT 100°F.				
DST#3, 3800-24, Dennis, 30-60-30-60, Rec. 300' MW. IHP 1863 psi., IFP 114-35 psi., ISIP 1391 psi., FFP 187-187 psi., FSIP 1391 psi., FHP 1831 psi., BHT 118°F.				

RELEASED

MAR 31 1983

FROM CONFIDENTIAL

USE ADDITIONAL SHEETS, IF NECESSARY, TO COMPLETE WELL RECORD.

Date Received

Michael R. Bryan
Signature

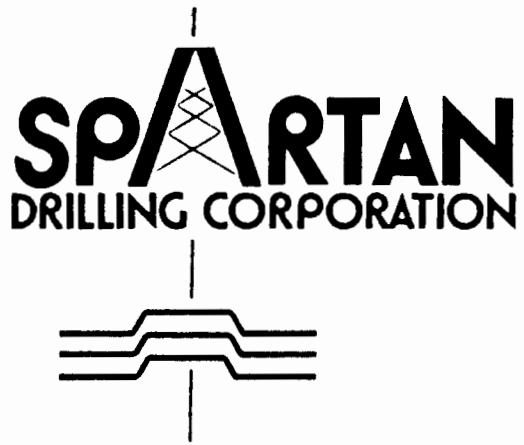
Michael R. Bryan

Title

8-28-81

Date

1-26-24W
12W



State Geological Survey
WICHITA BRANCH

November 16, 1980

DRILLERS LOG

RE: Hoskinson #1
SE/SE/SE 12
Sec. 1 T26S-R24W
Pratt County, Kansas

OPERATOR: Petro-Delta Corporation
CONTRACTOR: Spartan Drilling Corporation
COMMENCED: 11-17-80
COMPLETED: 12-1-80

Surface Pipe 354' 12 1/4" w/225 2% Gel 3% cc

0	359	Surface & Sand
359	500	Shale
500	1560	Shale & Lime
1896	2526	Lime & Shale
2526	3274	Shale - Lime
3274	3635	Lime & Shale
3635	4037	Lime
4037	4170	Lime & Shale

DEC 24 1980
CONSERVATION DIVISION
Wichita, Kansas

We certify that the above and foregoing is a true and correct copy of the log on the Hoskinson #1 in Pratt County, Kansas.

SPARTAN DRILLING CORPORATION

Floyd C. Wilson
Floyd C. Wilson
President

Subscribed and sworn to before this 16th day of November, 1980.

STATE NOTARY PUBLIC
KANSAS
CAROL E. WILSON
Sedgwick County, Ks.
My Appt. Exp. 1/31/91

Carol E. Wilson
Carol E. Wilson, Notary Public