

WELL LOG BUREAU--KANSAS GEOLOGICAL SOCIETY  
508 East Murdock, Wichita, Kansas

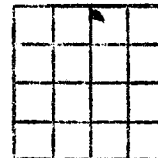
26-26-13W

Company- AMERADA PETROLEUM CORP.  
Farm- Anna Bruns "A" No. 1

SEC. 26 T. 26 R. 13W  
NW NW NE

Total Depth. 4380  
Comm. 8-25-53 Comp. 9-14-53  
Shot or Treated.  
Contractor. Peel Brothers, Inc.  
Issued. 11-7-53

County Pratt KANSAS



Elevation. 1943 DF

Production. 14 BO & 14% wtr.

Figures Indicate Bottom of Formations.

sand	200	BHP 375#.
sand & shale	650	DST: #6 4269-4305' open
red bed	800	2 hrs. rec. 155' slightly
anhydrite	830	oil cut mud BHP 150#.
red bed & shale	1315	DST: #7 4371-4380' open
shale	1800	1 hr. rec. 85' gassy mud
lime & shale	2265	with rainbow of oil,
lime	2420	BHP 1020#.
lime & shale	2725	
shale	2885	Schlumberger T.D. 4380'
lime & shale	2990	
shale	3245	
lime & shale	3360	
lime	3454	
lime & shale	3540	
lime	3592	
shale	3702	
lime & shale	3750	
lime	4060	
lime w/shale strks	4100	
lime	4380	RTD
Total Depth		

Schlumberger Tops:

Heebner	3574
Toronto	3592
Douglas Sand	3645
Brown Lime	3744
Lansing	3760
Base Kansas City	4086
Miss.	4178
Viola	4223
Simpson Shale	4268
Simpson Dolomite	4282
Simpson Sand	4298
Arbuckle	4368

DST: #1 3794-3811' open  
2 hrs. rec. 2350' gas and  
120' heavy gas cut mud with  
a rainbow show of oil, BHP  
130#.

DST: #2 3888-3945' open 2 hrs.  
rec. 60' mud and 250' muddy  
salt water with a rainbow  
show of oil BHP 180#.

DST: #3 3955-66' open 2 hrs.  
rec. 30' slightly oil and  
gas cut mud, and 65' muddy  
water, BHP 140#.

DST: #4 4039-60' open 1 hr.  
rec. 12' mud BHP 0#

DST: #5 4202-55' open 2 hrs.  
rec. 190' heavy gas cut mud  
with rainbow of oil and 65'  
slightly oil and gas cut mud

