

GOBIN

LEASE

2

WELL NO.

1


TEST NO.

H. L. MOORE

COMPANY

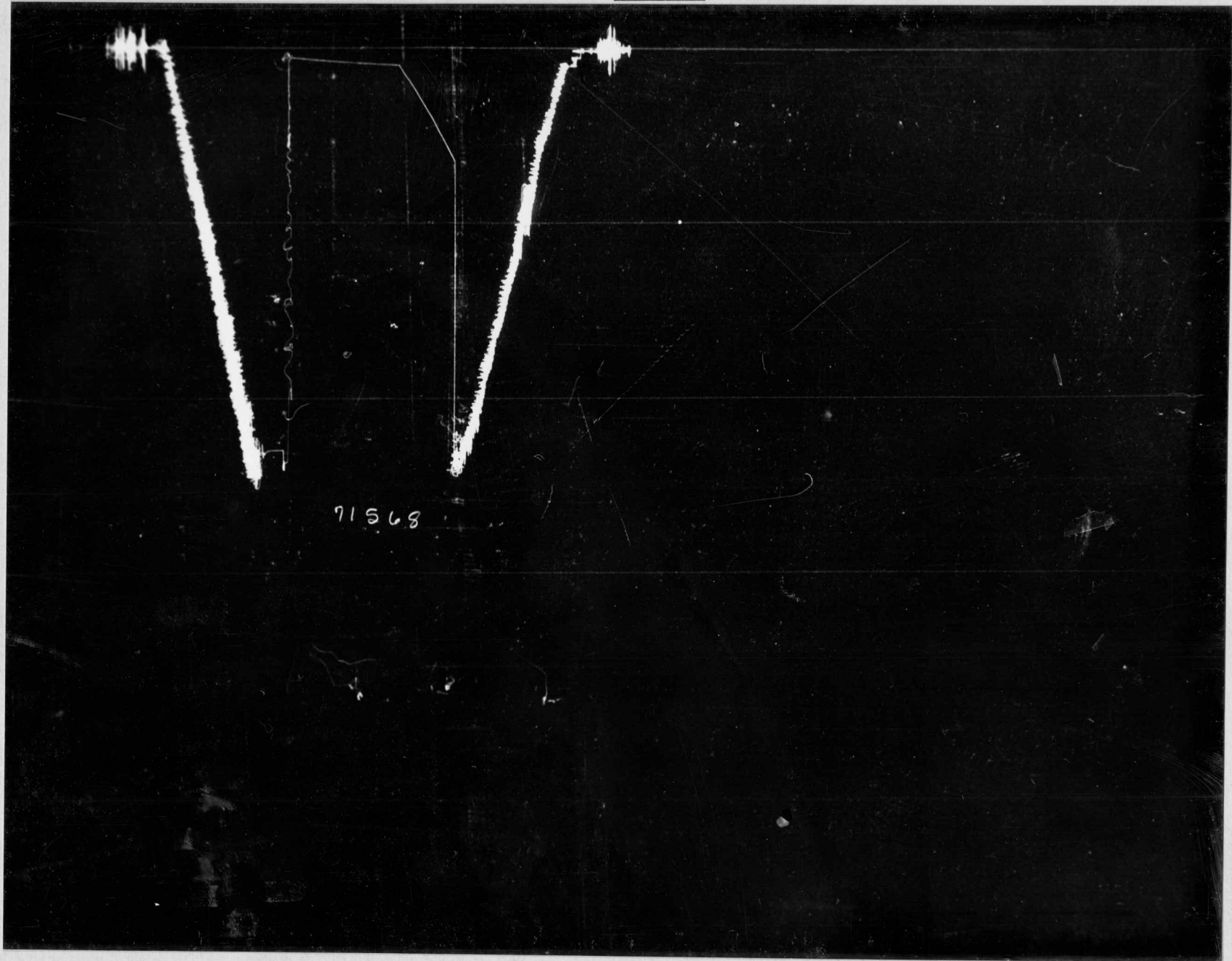
KANSAS

DISTRICT

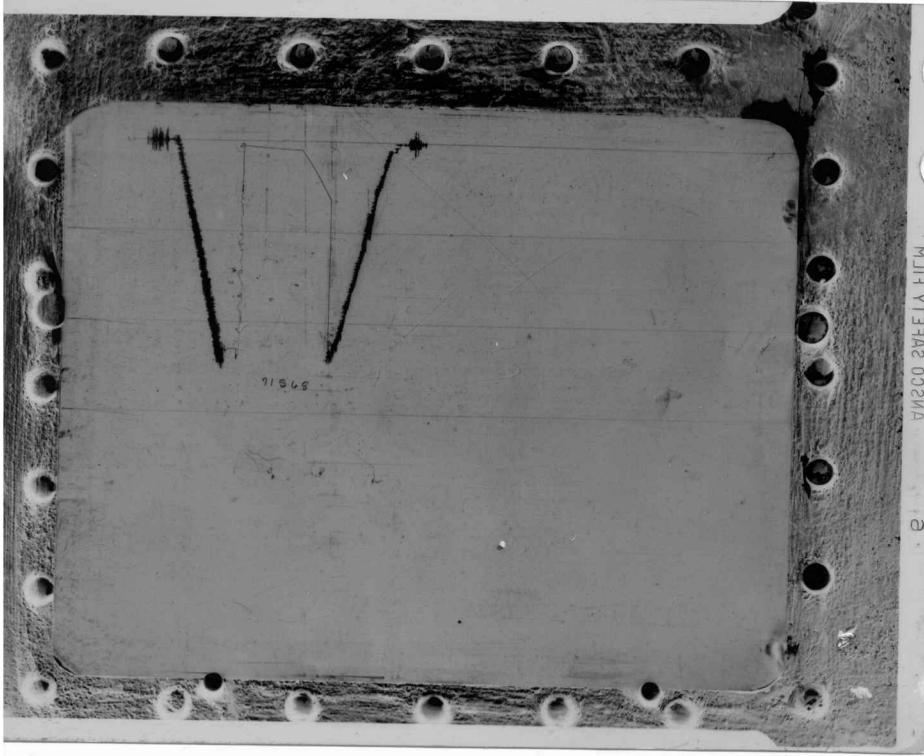
LOCATION	23-26-13		 Halliburton OIL WELL CEMENTING CO.		Date	8-8-54
FIELD	N/Iuka				Ticket No.	71568
COUNTY	Pratt				HOWCO DISTRICT	Pratt
STATE	Kansas		HOLE AND TOOL DATA		Kind of Job	Open Hole
CONTRACTOR	Reserve Drilling Co., Inc.		Total Depth	4255'	Casing Perforations	Top - Bottom -
MUD DATA			Top Packer Depth	4213'	Bottom Packer Depth	-
Kind	Baroid-Starch		Casing or Hole Size	7 7/8"	Liner or Rathole Size	-
Weight	10.1	lbs.-gal.	Formation Tested	Viola	Extra Folder Charge	-
Viscosity	44	Sec.	Size Drill Pipe	4 1/2" API FH	Size Drill Collars	5 3/4"
Filter Loss	8	c. c. Filter Cake 2/32 in	Size Bottom Choke	5/8"	Size Surface Choke	1"
Est. Gauge Depth Temp.	110	F°	Size Hook Wall Packer	-	Size Rings	-
Time Tool Open	1 Hour		Size D. E. Wall Packer	6 3/4" S.E.W.P.	No. Packers	1
Time Closed In.	30 Minutes		Size & Length Anchor	5" x 42'	Total	\$215.00
Depth BT. Gauge	4245'	Ft.	PRD Device No.	1726	Depth	4250'
BT. P.R.D. No.	375	Blanked Off	Yes	Blanked Off	Yes	Tester
12 Hr. Clock No.			1550		REMARKS:	
					Tool opened with a good blow. Recovered	
					150' of slightly oil & gas cut mud.	
Pressure Readings		Field	Office Corrected			
Initial Hydro Mud Pressure			2365		p.s.i.	
Initial Flow Pres.			53		p.s.i.	
Final Flow Pres.			100		p.s.i.	
Closed in Pres.			654		p.s.i.	
Final Hydro Mud Pressure			2304		p.s.i.	
Amount of Cushion			None		All depths measured from 1946' Derrick Floor	
					No. Folders Reproduced 5	

TIME

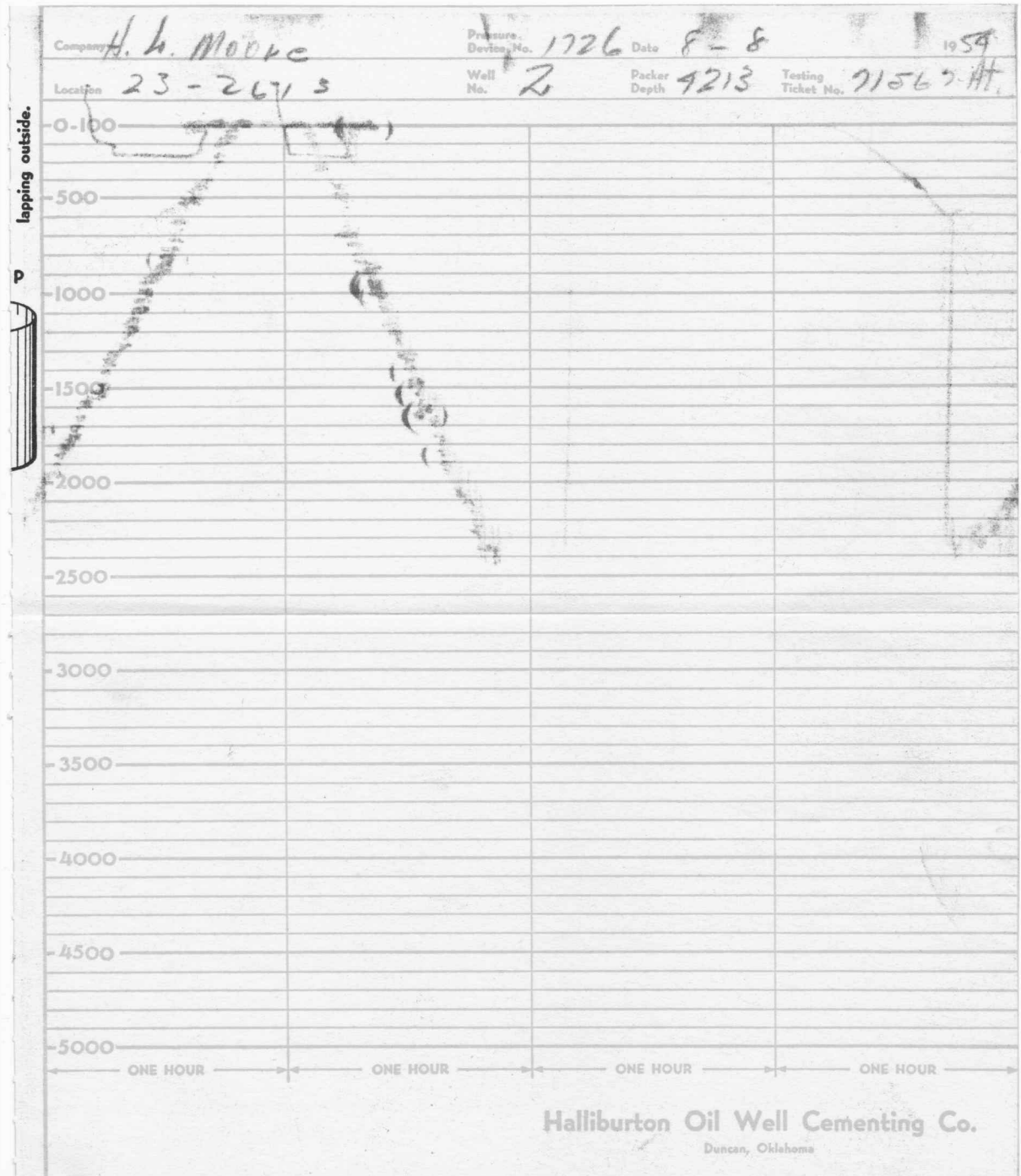
PRESSURE



Each Horizontal Line Equal to 1000 p.s.i.



MILITARY 022M



GOBIN

LEASE

2

WELL NO.

2


TEST NO.

H. L. MOORE

COMPANY

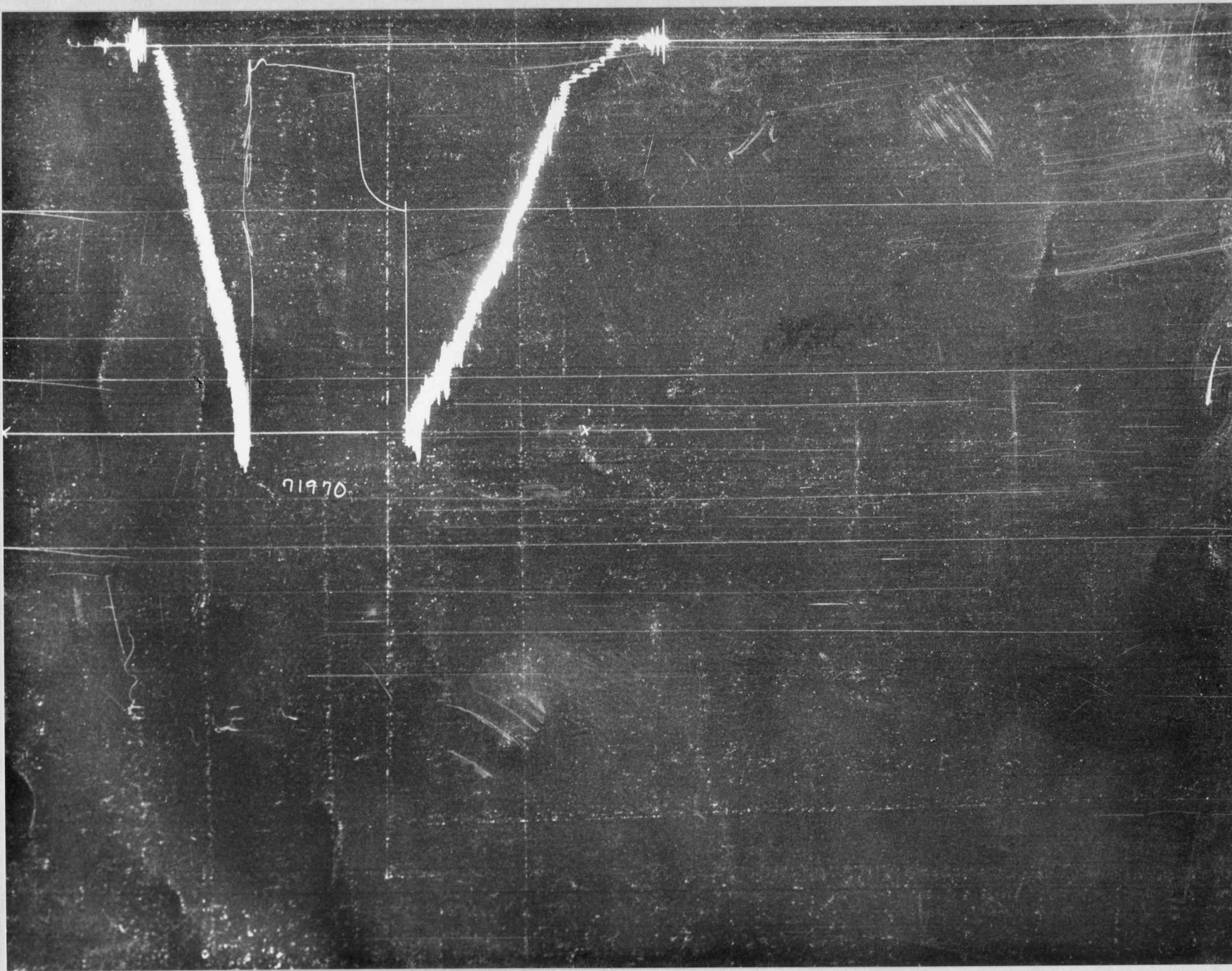
TULSA, OKLAHOMA

DISTRICT

LOCATION	23-26-13		 Halliburton OIL WELL CEMENTING CO.			Date	8-9-54		
FIELD	Iuka Carme N/W					Ticket No.	71970		
COUNTY	Pratt					HOWCO DISTRICT	Pratt		
STATE	Kansas					Kind of Job	Open Hole		
CONTRACTOR	Reserve Drilling Co., Inc. MUD DATA		HOLE AND TOOL DATA			Price	\$215.00		
Kind	Starch		Total Depth	4280'	Casing Perforations	Top - Bottom -	Second Packer Assembly	-	
Weight	10.1	lbs.-gal.	Top Packer Depth	4260'	Bottom Packer Depth	-	Safety Joint	-	
Viscosity	46	Sec.	Casing or Hole Size	7 7/8"	Liner or Rathole Size	-	Extra Folder Charge	-	
Filter Loss	7.4	c. c. Filter Cake	Formation Tested	Simpson			Jars	-	
Est. Gauge Depth Temp.	110	F°	Size Drill Pipe	4 1/2" API FH	Size Drill Collars	5 3/4" x 120'			
Time Tool Open	1 Hour		Size Bottom Choke	5/8"	Size Surface Choke	1"			
Time Closed In.	30 Minutes		Size Hook Wall Packer	-	Size Rings	-	No. Rings	-	
Depth BT. Gauge	4271'		Size D. E. Wall Packer	6 3/4" ESA	No. Packers	1	Total	\$215.00	
BT. P.R.D. No.	375	Blanked Off	Size & Length Anchor	5" FJ x 20' Perf.			Witnessed By	W. Magathan	
		Yes	PRD Device No.	1726	Depth	4275'		P. Hillard	
					Blanked Off	Yes	Tester	G. Pointer	
12 Hr. Clock No.	1550		REMARKS:						
Pressure Readings	Field	Office Corrected	Tool opened with a good blow. Gas to surface in						
Initial Hydro Mud Pressure		2368	20 minutes but too weak to gauge. Recovered 15' of						
Initial Flow Pres.		95	heavily oil & gas cut mud, 60' of muddy oil, and 360'						
Final Flow Pres.		175	of slightly muddy oil.						
Closed in Pres.		1011							
Final Hydro Mud Pressure		2368	Amount of Cushion	None	All depths measured from	1946' Derrick Floor	No. Folders Reproduced	5	

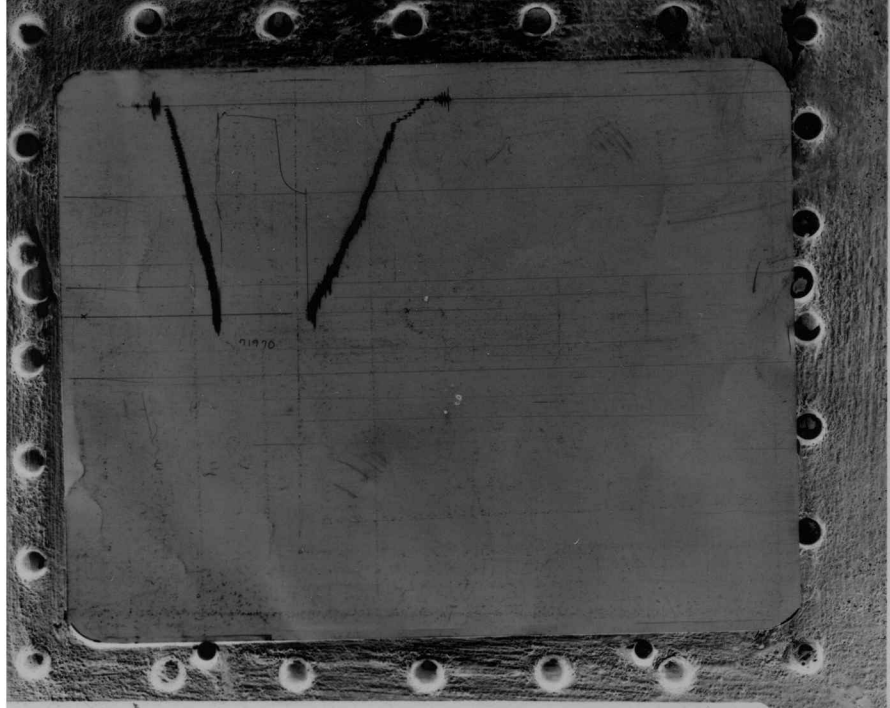
TIME

PRESSURE

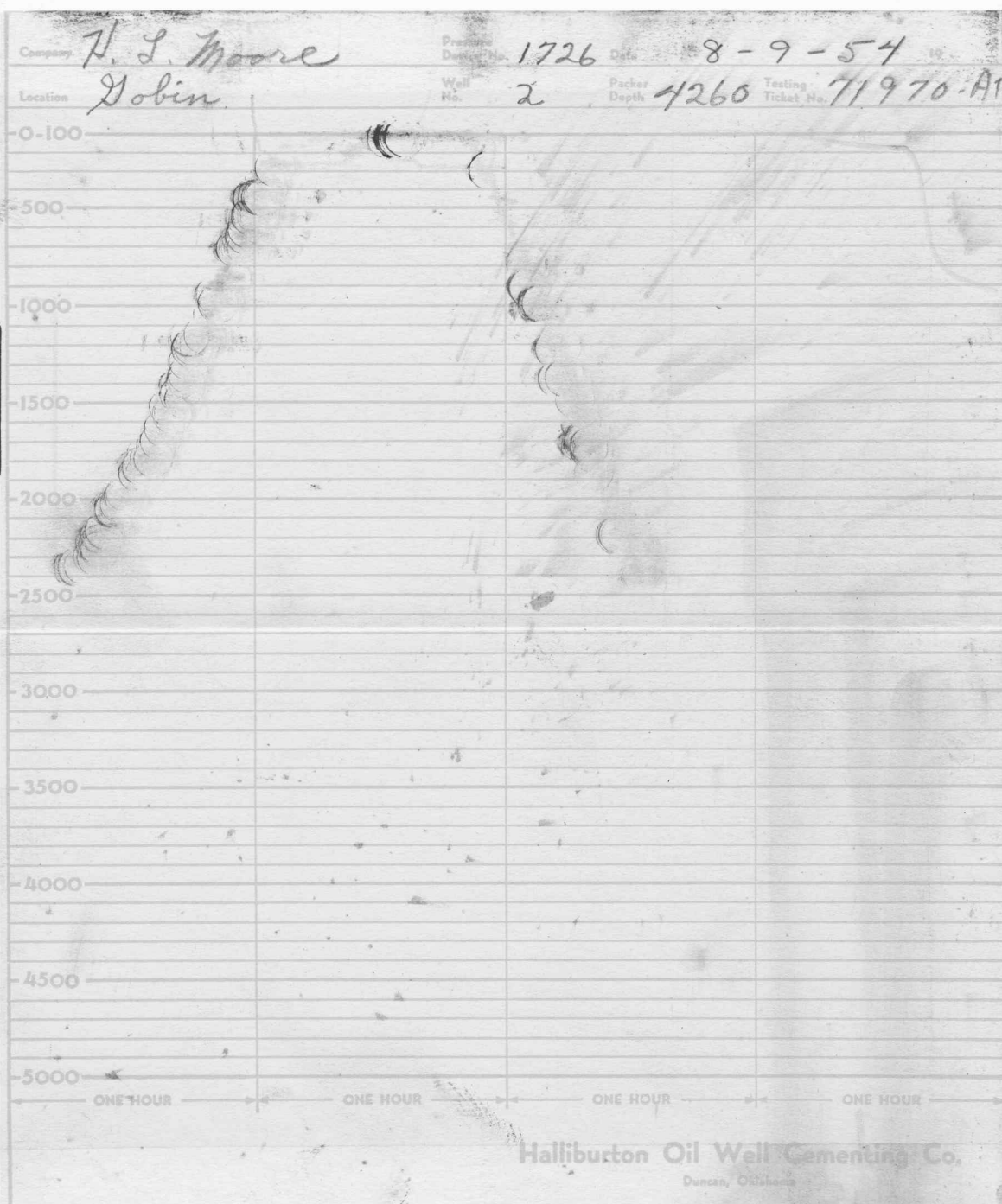


71970

Each Horizontal Line Equal to 1000 p.s.i.



MEMO YTR3A2 2V2E2A LIFW



BEE FORMATION TESTING COMPANY, INC.
SUB-SURFACE RECORD

COMPANY H.L. Moore DATE OF TEST 8-9-54
WELL NO. 2 TEST NO. 3 LEASE Gobin
PRESSURE RECORDER CAP. 4500# MUD WT. 9.9
TOTAL DEPTH 4301' PACKER SET AT 4285 & 4279
RECOVERY 85' drilling mud; Weak blow for 3 minutes

Formation Tested: Simpson

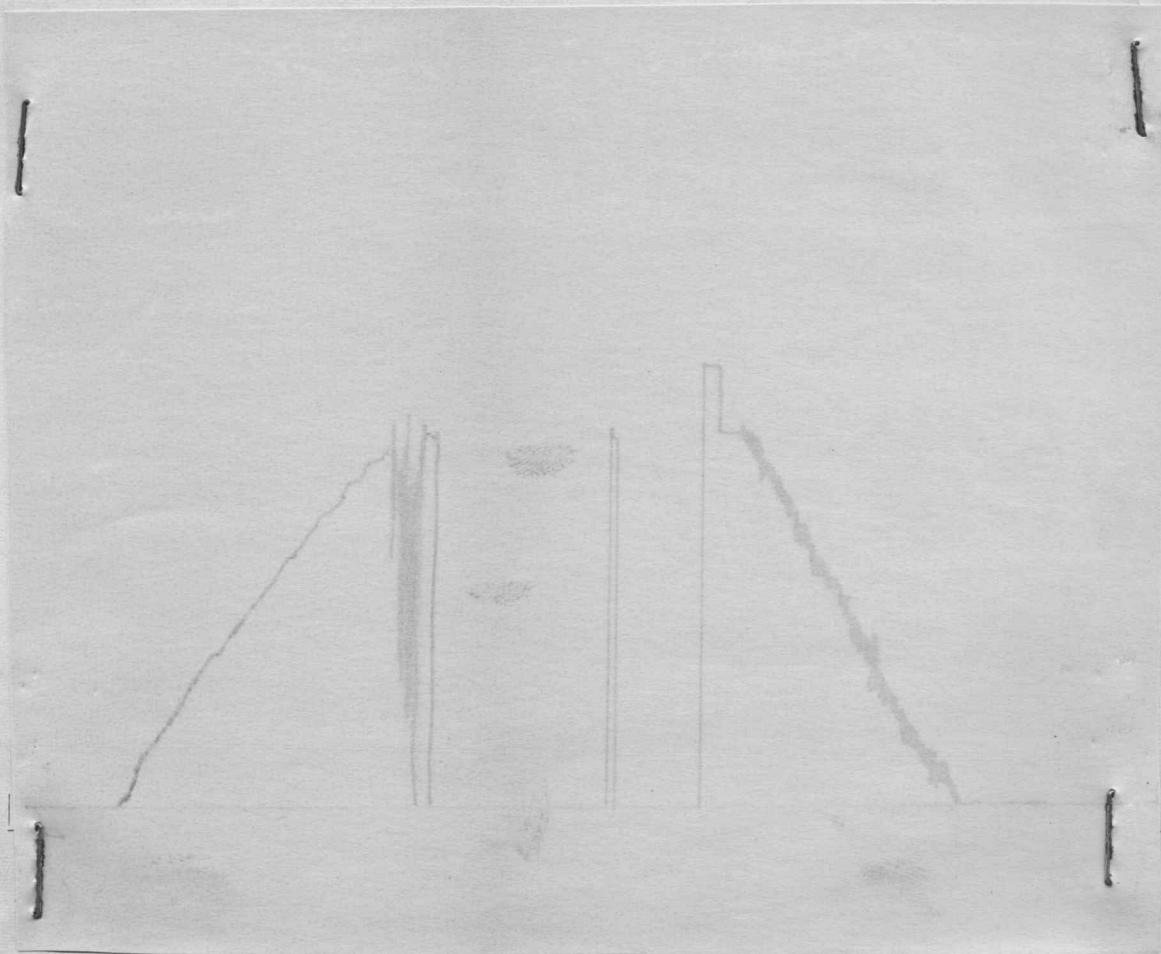
TOOL OPEN: 30 minutes

CHOKE SIZE: TOP 1/2" BOTTOM 1/2" NO. OF COPIES 1

OPERATOR S.L. Ensminger TEST TICKET NO. 584

SHUT IN PRESSURE TIME 20 minutes BHP 0# IFP 0# FFP 0# MUD COLUMN PRESSURE

PACKER SEAT FAILURE _____ TOOL PLUGGED _____ ANCHOR PLUGGED _____



BEE FORMATION TESTING COMPANY, INC.
SUB-SURFACE RECORD

COMPANY H.L. Buddy Moore DATE OF TEST 8-10-54
WELL NO. 2 TEST NO. 4 LEASE Gobin
PRESSURE RECORDER CAP. 3500# & 2500# MUD WT. 9.9
TOTAL DEPTH 4378' PACKER SET AT 4361' & 4355'
RECOVERY 660' 180' muddy oil; 180' clean gassy oil; 120' heavy oil and gas cut mud;
180' slightly oil & gas cut mud

Formation Tested: Arb.

TOOL OPEN: 1 hour
CHOKE SIZE: TOP 1/2" BOTTOM 1/2" NO. OF COPIES 1
OPERATOR S.L. Ensminger TEST TICKET NO. 585
SHUT IN PRESSURE TIME 30 min. BHP _____ IFP _____ FFP 125# MUD COLUMN PRESSURE 2300#
PACKER SEAT FAILURE _____ TOOL PLUGGED _____ ANCHOR PLUGGED _____

