



15-181-22296

13-26s-15w

**DIAMOND TESTING**  
P.O. Box 157  
HOISINGTON, KANSAS 67544  
(620) 653-7550 • (800) 542-7313  
STC 21083.D428

Company L. D. Drilling, Inc. Lease & Well No. Wheeler/Lute No. 2

Elevation 2049KB Formation Mississippi Effective Pay -- Ft. Ticket No. J2231

Date 4-10-08 Sec. 13 Twp. 26S Range 15W County Pratt State Kansas

Test Approved By Kim B. Shoemaker Diamond Representative John C. Riedl

Formation Test No. 1 Interval Tested from 4,295 ft. to 4,420 ft. Total Depth 4,420 ft.

Packer Depth 4,290 ft. Size 6 3/4 in. Packer Depth -- ft. Size -- in.

Packer Depth 4,295 ft. Size 6 3/4 in. Packer Depth -- ft. Size -- in.

Depth of Selective Zone Set          ft.

Top Recorder Depth (Inside) 4,298 ft. Recorder Number 21083 Cap. 5,000 psi

Bottom Recorder Depth (Outside) 4,417 ft. Recorder Number 11073 Cap. 4,000 psi

Below Straddle Recorder Depth          ft. Recorder Number          Cap.          psi

Drilling Contractor Duke Drilling Co., Inc. - Rig 8 Drill Collar Length -- ft. I.D. -- in.

Mud Type Chemical Viscosity 54 Weight Pipe Length -- ft. I.D. -- in.

Weight 9.0 Water Loss 9.6 cc. Drill Pipe Length 4,269 ft. I.D. 3 1/2 in.

Chlorides 5,500 P.P.M. Test Tool Length 26 ft. Tool Size 3 1/2 - IF in.

Jars: Make Sterling Serial Number 2 Anchor Length 125 ft. Size 4 1/2 - FH in.

Did Well Flow? No Reversed Out No Surface Choke Size 1 in. Bottom Choke Size 5/8 in.

Main Hole Size 7 7/8 in. Tool Joint Size 4 1/2 - XH in.

Blow: 1st Open: Gas to surface in 1 min. Strong blow. No blow back during shut-in.

2nd Open: Gas to surface throughout. Fair blow back during shut-in. (SEE GAS VOLUME REPORT.)

Recovered 0 ft. of FLUID RECOVERY

Recovered          ft. of         

Recovered          ft. of         

Recovered          ft. of         

Recovered          ft. of         

Remarks         

Time Set Packer(s) 5:12 A.M. PM Time Started Off Bottom 8:12 A.M. PM Maximum Temperature 126°

Initial Hydrostatic Pressure          (A) 2201 P.S.I.

Initial Flow Period          Minutes 30 (B) 1404 P.S.I. to (C) 1426 P.S.I.

Initial Closed In Period          Minutes 45 (D) 1498 P.S.I.

Final Flow Period          Minutes 45 (E) 1403 P.S.I. to (F) 1412 P.S.I.

Final Closed In Period          Minutes 60 (G) 1486 P.S.I.

Final Hydrostatic Pressure          (H) 2066 P.S.I.

## GENERAL INFORMATION

### Client Information:

Company: L D DRILLING INC

Contact: L D DAVIS

Phone: Fax: e-mail:

### Site Information:

Contact: KIM SHOEMAKER

Phone: Fax: e-mail:

### Well Information:

Name: WHEELER-LUTE #2

Operator: L D DRILLING INC

Location-Downhole: DST#1 4295 TO 4420

Location-Surface:

### Test Information:

Company: DIAMOND TESTING

Representative: JOHN RIEDL

Supervisor: KIM SHOEMAKER

Test Type: CONVENTIONAL Job Number: D428

Test Unit: 2

Start Date: 2008/04/10 Start Time: 03:45:00

End Date: 2008/04/10 End Time: 10:10:00

Report Date: 2008/04/10 Prepared By: JOHN RIEDL

Remarks: Qualified By: KIM SHOEMAKER

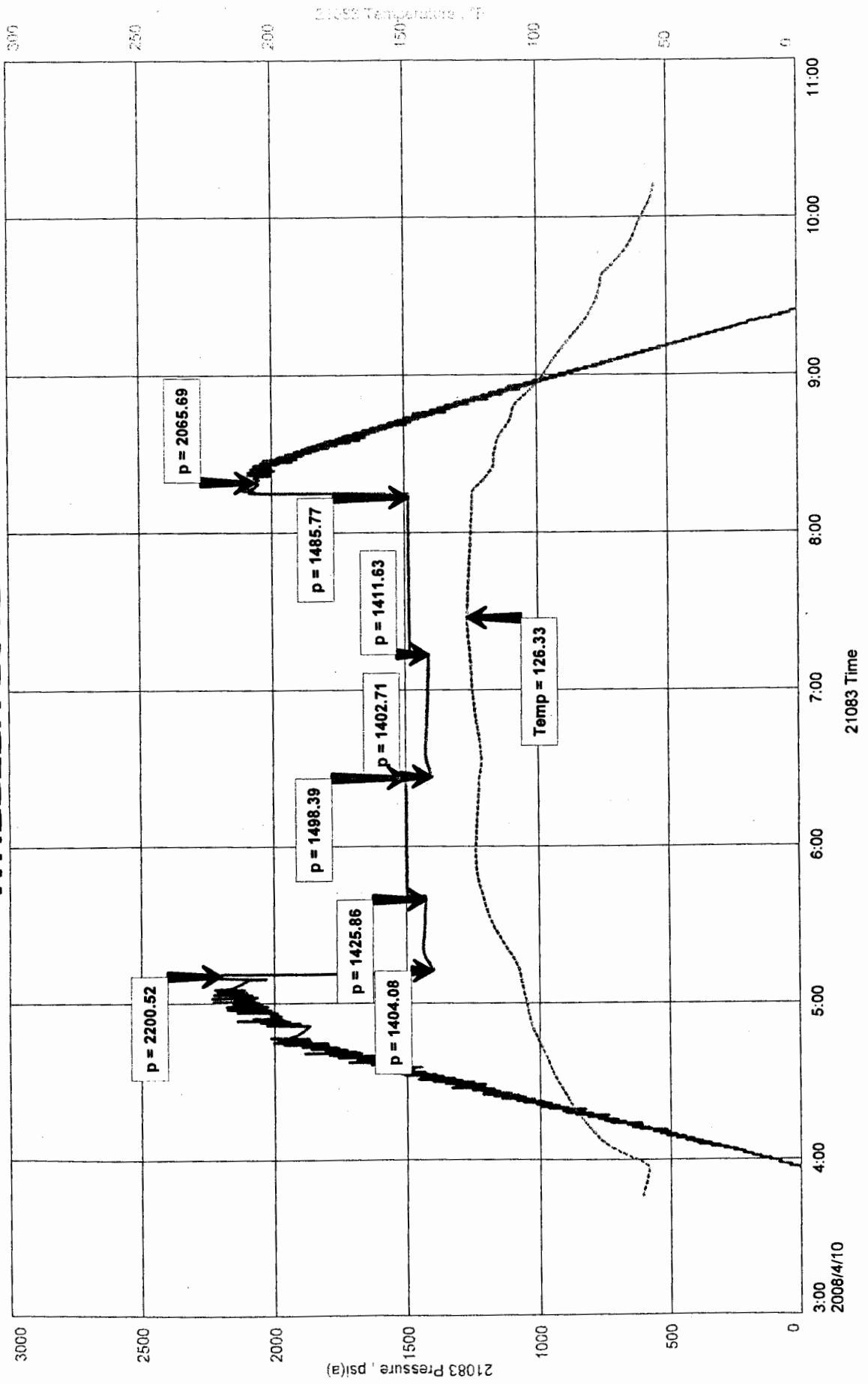
GAS TO SURFACE 1 MINUTE: STABILIZED @ 7,900 MCF/D  
NO FLUID RECOVERY

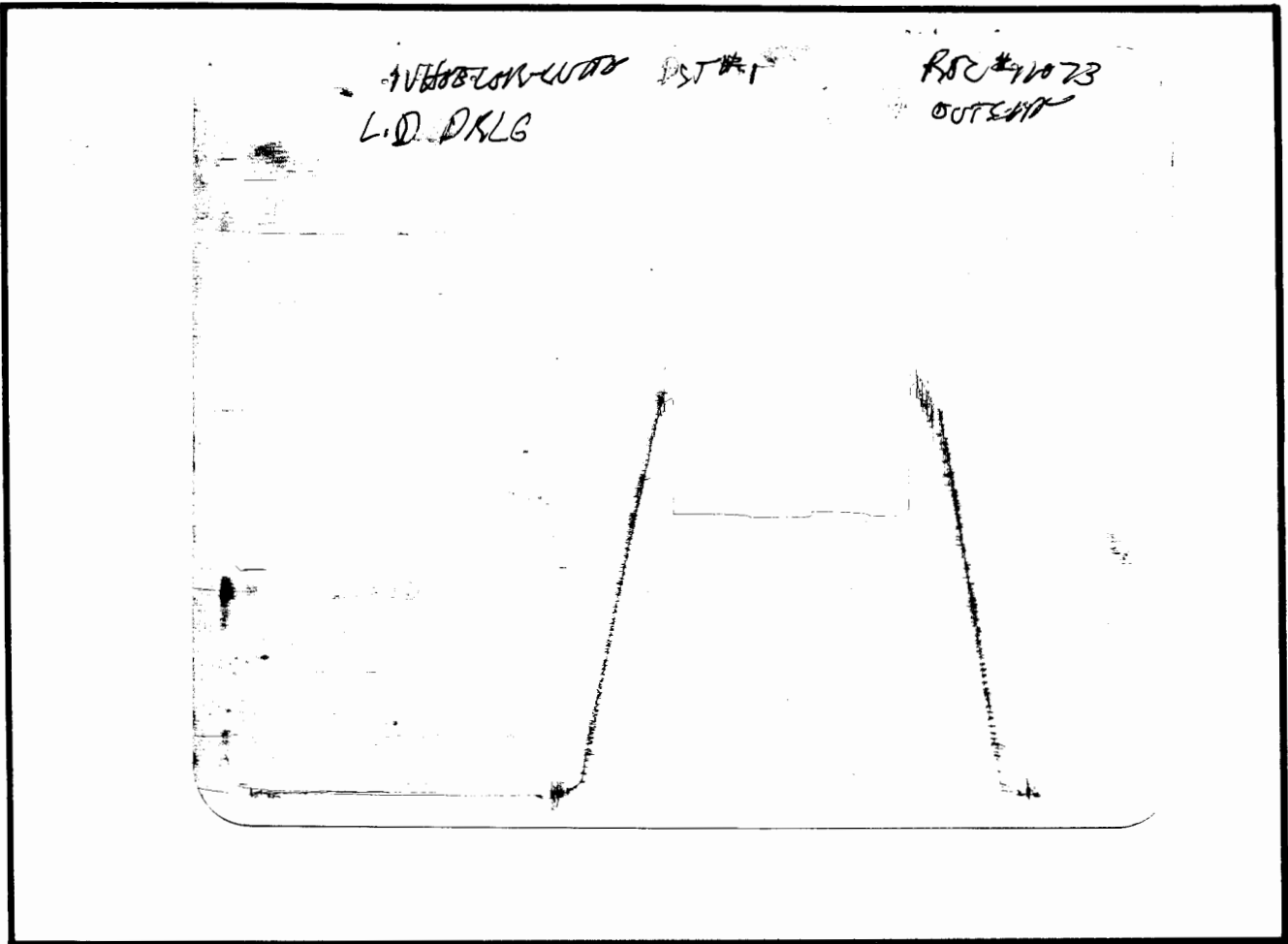


WHEELER-LUTE #2  
Job Number: D428

L D DRILLING INC  
DST#1 4295 TO 4420  
Start Test Date: 2008/04/10  
Final Test Date: 2008/04/10

# WHEELER-LUTE #2





This is an actual photograph of recorder chart.

POINT	PRESSURE		PSI
	Field Reading	Elec. Office Reading	
(A) Initial Hydrostatic Mud .....	2201	2201	PSI
(B) First Initial Flow Pressure.....	1404	1404	PSI
(C) First Final Flow Pressure .....	1426	1426	PSI
(D) Initial Closed-in Pressure .....	1498	1498	PSI
(E) Second Initial Flow Pressure .....	1403	1403	PSI
(F) Second Final Flow Pressure.....	1412	1412	PSI
(G) Final Closed-in Pressure.....	1486	1486	PSI
(H) Final Hydrostatic Mud .....	2066	2066	PSI