

WELL LOG BUREAU--KANSAS GEOLOGICAL SOCIETY
508 East Murdock, Wichita, Kansas

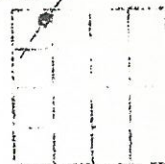
Company- ANSCHUTZ DRILLING COMPANY
Farm- Tatlock No. 2

SEC. 28 T. 26 R. 15
NE 1W 1W

Total Depth. 4324
Comm. 4-23-55 Comp. 5-6-55
Shot or Treated.
Contractor.
Issued. 5-28-55

County Pratt

KANSAS



Elevation. 2050 DF

Production. dry

CASING:

8 5/8" 357' cem. w/300 sx

Figures indicate Bottom of Formations.

shale & shell	40
sand	82
shale & shell	260
sand & redrock	352
redrock	995
Anhydrite	1020
redbed	1095
shale & shells	1950
shale & lime	1975
lime	2225
lime & shale	3930
lime	4239
lime & shale	4324
Total depth	

Tops:

Heebner	3743
Douglas	3784
Brown lime	3902
Lansing	3919
Base Kansas City	4246
Marmaton limestone	4290

Remarks:

A drill stem test was taken from 3923-3930. It was open 1 hr with a strong blow, diminishing to weak and recovered 30' of mud with a few spots of oil. The bottom hole pressure was 1050#.

A Drill stem test was taken covering this zone from 3932 to 3948. It was open 1 hr. with a weak steady blow throughout, and recovered 180' of gas and 35' of very slight gas cut mud with a few spots of oil. The bottom hole pressure was 330#.

A Drill Stem Test was taken in this zone from 4190 to 4198. It was open 1 hr. with a weak, intermittent blow for 40 minutes and recovered 30' of salty, watery mud with a bottom hole pressure of 160#.