

FORMATION TEST REPORT



Home Office:

Wichita, Kansas 67201

P.O. Box 1599

Phone (316) 262-5861

WESTERN TESTING CO. INC.
SUBSURFACE PRESSURE SURVEY

DATE : 8-14-88 TICKET : 14381
CUSTOMER : FAIRCHILD EXPLORATION INC. LEASE : ADKINS
WELL : #1 TEST: 1 GEOLOGIST : T PIERCE
ELEVATION : 1684 GL FORMATION : LANSING C
SECTION : 15 TOWNSHIP : 26S
RANGE : 9W COUNTY : RENO STATE : KANSAS
GAUGE SN# : 4332 RANGE : 4200 CLOCK : 12

INTERVAL FROM : 3388 TO : 3420 TOTAL DEPTH : 3420
DEPTH OF SELECTIVE ZONE :
PACKER DEPTH : 3383 SIZE : 6.63
PACKER DEPTH : 3388 SIZE : 6.63
PACKER DEPTH : SIZE :
PACKER DEPTH : SIZE :

DRILLING CON. : RED TIGER #4
MUD TYPE : CHEMICAL VISCOSITY : 37
WEIGHT : 8.8 WATER LOSS (CC) : 13.6
CHLORIDES (PPM) : 7500
JARS-MAKE : NO SERIAL NUMBER :
DID WELL FLOW ? : NO REVERSED OUT ? : NO

DRILL COLLAR LENGTH : 0 FT I.D. inch : 0.00
WEIGHT PIPE LENGTH : 945 FT I.D. inch : 2.50
DRILL PIPE LENGTH : 2423 FT I.D. inch : 3.80
TEST TOOL LENGTH : 20 FT TOOL SIZE : 5.50
ANCHOR LENGTH : 32 FT ANCHOR SIZE : 5.50
SURFACE CHOKE SIZE : .75 IN BOTTOM CHOKE SIZE : .75
MAIN HOLE SIZE : 7.875 IN TOOL JOINT SIZE : 4.5 XH

BLOW COMMENT #1 : STRONG BLOW ON THE INITIAL FLOW-GAS TO SURFACE IN
BLOW COMMENT #2 : 5 MINUTES. SEE ATTACHED FLOW CHART.
BLOW COMMENT #3 :
BLOW COMMENT #4 :

RECOVERED : 210 FT OF: GAS & OIL CUT WATER CUT MUD (10% OIL)

Total Barrels Fluid = 1.27
Total Fluid Prod Rate = 24.48 BFPD
Indicated Oil Rate = 2.45 BOPD
Indicated Wtr Rate = 1.75 BWPD

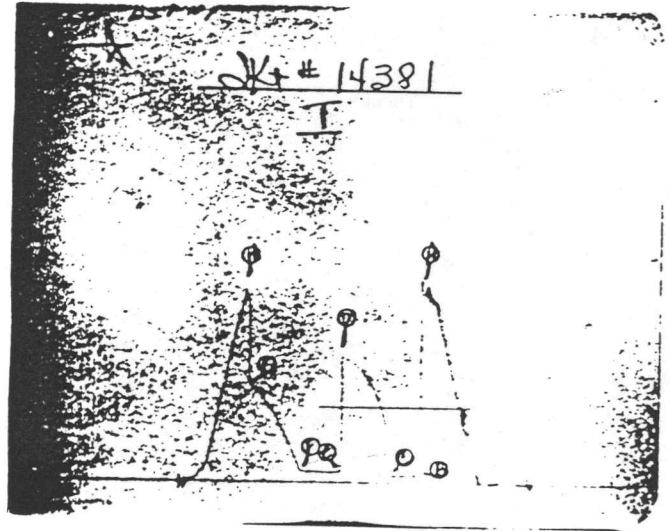
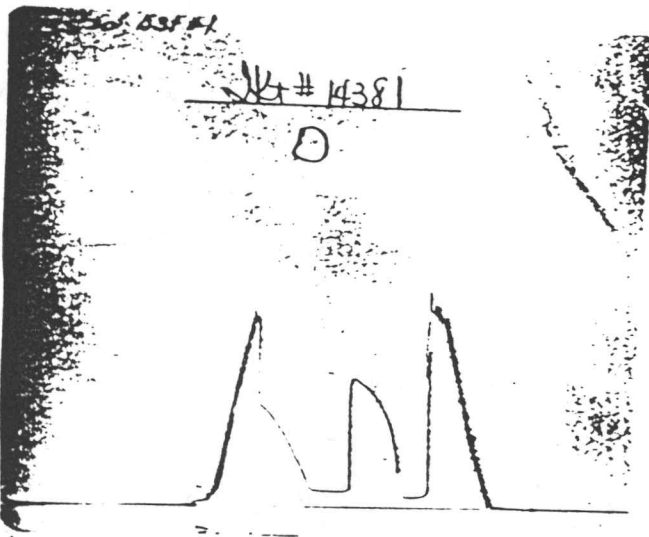
REMARK 1 :
REMARK 2 :
REMARK 3 :
REMARK 4 :

SET PACKER(S) : 6:30 AM

TIME STARTED OFF BOTTOM : 9:45 AM

WELL TEMPERATURE : 114
INITIAL HYDROSTATIC PRESSURE
INITIAL FLOW PERIOD MIN: 30
INITIAL CLOSED IN PERIOD MIN: 60
FINAL FLOW PERIOD MIN: 45
FINAL CLOSED IN PERIOD MIN: 63
FINAL HYDROSTATIC PRESSURE

(A) 1618
(B) 60 PSI TO (C) : 60
(D) 1078
(E) 88 PSI TO (F) : 93
(G) 842
(H) 1588



GAS FLOW REPORT

Date : 8-14-88	Ticket # : 14381
Customer : FAIRCHILD EXPLORATION INC.	Lease : ADKINS
Well : #1 Test : 1	Geologist : T PIERCE
Elevation (KB) : 1689 Formation : LANSING C	
Section : 15 Township : 26S	
Range : 9W County : RENO	State : KANSAS
Gauge SN # : 4332 Range : 4200	Clock : 12

TIME GAUGE (MIN)	TESTER TYPE	ORFICE SIZE	PRESSURE (PSI)	FLOW DESCRIPTION
---------------------	-------------	----------------	-------------------	------------------

PRE FLOW
=====

5	MERLA	1/2"		GAS TO SURFACE
10			12" of WTR	21900 CFPD
20			18	26600 CFPD
30			8	17200 CFPD

SECOND FLOW
=====

3 TO 5 MINUTES				MAX 59200 CFPD
10	MERLA	1/2"	2" of WTR	8870 CFPD
20			1	6270 CFPD
30				TOO WEAK TO MEASURE
40				TOO WEAK TO MEASURE
45				TOO WEAK TO MEASURE

Gas Bottle SN # : 40 P
 Date Bottle Filled : 8-14-88
 Date to be Invoiced :

WESTERN TESTING CO. INC.
WICHITA-KANSAS

Pressure Transient Report

COMPANY : FAIRCHILD EXPLORATION INC.
RIG : RENO-KANSAS
FIELD : ADKINS
WELL : #1
DATE : 8-14-88
GAUGE NO : 4332

OPERATIONAL COMMENTS

COMPANY : FAIRCHILD EXPLORATION INC.
 WELL : #1
 GAUGE # : 4332
 DATE : 14/ 8/88

FIELD : ADKINS
 JOB # : 14381
 DEPTH : 3420
 TEST :

DATA No.	REAL TIME HR:MN:SS	ELAPSE TIME DELTA HOURS	PRESSURE PSIG	TEMP DEG F	DELTA P Pi-P(i-1)
INITIAL FLOW					
2	6:30: 0	0.000	60.000	114.00	0.000
3	6:34:59	0.083	60.000	114.00	0.000
4	6:40: 0	0.167	60.000	114.00	0.000
5	6:45: 0	0.250	60.000	114.00	0.000
6	6:49:59	0.333	60.000	114.00	0.000
7	6:55: 0	0.417	60.000	114.00	0.000
8	7: 0: 0	0.500	60.000	114.00	0.000
INITIAL SHUT-IN					
9	7: 3: 0	0.550	258.000	114.00	198.000
10	7: 6: 0	0.600	404.000	114.00	146.000
11	7: 9: 0	0.650	512.000	114.00	108.000
12	7:12: 0	0.700	597.000	114.00	85.000
13	7:15: 0	0.750	663.000	114.00	66.000
14	7:18: 0	0.800	723.000	114.00	60.000
15	7:21: 0	0.850	776.000	114.00	53.000
16	7:24: 0	0.900	818.000	114.00	42.000
17	7:27: 0	0.950	855.000	114.00	37.000
18	7:30: 0	1.000	889.000	114.00	34.000
19	7:33: 0	1.050	920.000	114.00	31.000
20	7:36: 0	1.100	945.000	114.00	25.000
21	7:39: 0	1.150	970.000	114.00	25.000
22	7:42: 0	1.200	990.000	114.00	20.000
23	7:45: 0	1.250	1008.000	114.00	18.000
24	7:48: 0	1.300	1026.000	114.00	18.000
25	7:51: 0	1.350	1040.000	114.00	14.000
26	7:54: 0	1.400	1053.000	114.00	13.000
27	7:57: 0	1.450	1065.000	114.00	12.000
28	8: 0: 0	1.500	1078.000	114.00	13.000
FINAL FLOW					
29	8: 1: 0	1.517	88.000	114.00	-990.000
30	8: 4:59	1.583	88.000	114.00	0.000
31	8:10: 0	1.667	88.000	114.00	0.000
32	8:15: 0	1.750	88.000	114.00	0.000
33	8:19:59	1.833	88.000	114.00	0.000
34	8:25: 0	1.917	90.000	114.00	2.000
35	8:30: 0	2.000	92.000	114.00	2.000
36	8:34:59	2.083	92.000	114.00	0.000
37	8:40: 0	2.167	93.000	114.00	1.000
38	8:45: 0	2.250	93.000	114.00	0.000
FINAL SHUT-IN					
39	8:48: 0	2.300	128.000	114.00	35.000
40	8:51: 0	2.350	180.000	114.00	52.000
41	8:54: 0	2.400	230.000	114.00	50.000
42	8:57: 0	2.450	280.000	114.00	50.000
43	9: 0: 0	2.500	324.000	114.00	44.000
44	9: 3: 0	2.550	370.000	114.00	46.000
45	9: 6: 0	2.600	415.000	114.00	45.000
46	9: 9: 0	2.650	460.000	114.00	45.000
47	9:12: 0	2.700	505.000	114.00	45.000
48	9:15: 0	2.750	548.000	114.00	43.000

COMPANY : FAIRCHILD EXPLORATION INC.

WELL : #1

GAUGE # : 4332

DATE : 14/ 8/88

FIELD : ADKINS

JOB # : 14381

DEPTH : 3420

TEST :

DATA No.	REAL TIME HR:MN:SS	ELAPSE TIME DELTA HOURS	PRESSURE PSIG	TEMP DEG F	DELTA P Pi-P(i-1)
53	9:30: 0	3.000	713.000	114.00	24.000
54	9:33: 0	3.050	742.000	114.00	29.000
55	9:36: 0	3.100	763.000	114.00	21.000
56	9:39: 0	3.150	788.000	114.00	25.000
57	9:42: 0	3.200	810.000	114.00	22.000
58	9:45: 0	3.250	829.000	114.00	19.000
59	9:48: 0	3.300	842.000	114.00	13.000

WESTERN TESTING CO. INC.

FORMATION TEST REPORT



Home Office:

Wichita, Kansas 67201

P.O. Box 1599

Phone (316) 262-5861

WESTERN TESTING CO. INC.
SUBSURFACE PRESSURE SURVEY

DATE : 8-15-88 TICKET : 14382
CUSTOMER : FAIRCHILD EXPLORATION INC. LEASE : ADKINS
WELL : #1 TEST: 2 GEOLOGIST : T PIERCE
ELEVATION : 1684 GL FORMATION : HERTHA (KC)
SECTION : 15 TOWNSHIP : 26S
RANGE : 9W COUNTY : RENO STATE : KANSAS
GAUGE SN# : 4332 RANGE : 4200 CLOCK : 12

INTERVAL FROM : 3658 TO : 3596 TOTAL DEPTH : 3695
DEPTH OF SELECTIVE ZONE :
PACKER DEPTH : 3653 SIZE : 6.63
PACKER DEPTH : 3659 SIZE : 6.63
PACKER DEPTH : SIZE :
PACKER DEPTH : SIZE :

DRILLING CON. : RED TIGER RIG 4
MUD TYPE : CHEMICAL VISCOSITY : 45
WEIGHT : 9.1 WATER LOSS (CC) : 12.8
CHLORIDES (PPM) : 11000
JARS-MAKE : NO SERIAL NUMBER :
DID WELL FLOW ? : NO REVERSED OUT ? : NO

DRILL COLLAR LENGTH : 0 FT I.D. inch : 0.00
WEIGHT PIPE LENGTH : 945 FT I.D. inch : 2.50
DRILL PIPE LENGTH : 2693 FT I.D. inch : 3.80
TEST TOOL LENGTH : 20 FT TOOL SIZE : 5.50
ANCHOR LENGTH : 37 FT ANCHOR SIZE : 5.50
SURFACE CHOKE SIZE : .75 IN BOTTOM CHOKE SIZE : .75
MAIN HOLE SIZE : 7.875 IN TOOL JOINT SIZE : 4.5 XH

BLOW COMMENT #1 : STRONG BLOW ON BOTH THE INITIAL AND FINAL FLOW PERIODS
BLOW COMMENT #2 : NO GAS TO SURFACE.
BLOW COMMENT #3 :
BLOW COMMENT #4 :

RECOVERED : 2401 FT OF: GAS & OIL CUT WATERY MUD (20% OIL)

Total Barrels Fluid = 26.16
Total Fluid Prod Rate = 627.83 BFPD
Indicated Oil Rate = 125.51 BOPD
Indicated Wtr Rate = 47.07 BWPD
Corrected Oil Rate = 38.85 BOPD
Corrected Wtr Rate = 14.57 BWPD

REMARK 1 :
REMARK 2 : RECOVERED 2400 FEET OF GAS ABOVE FLUID.
REMARK 3 :
REMARK 4 :

SET PACKER(S) : 10:15 AM

TIME STARTED OFF BOTTOM : 1:00 PM

WELL TEMPERATURE : 118

INITIAL HYDROSTATIC PRESSURE

(A) 1818

INITIAL FLOW PERIOD MIN: 30

(B) 61 PSI TO (C) : 66

INITIAL CLOSED IN PERIOD MIN: 45

(D) 1290

FINAL FLOW PERIOD MIN: 30

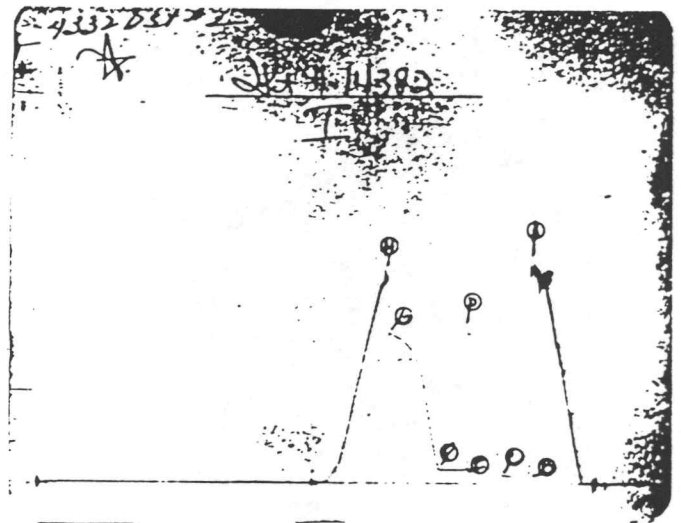
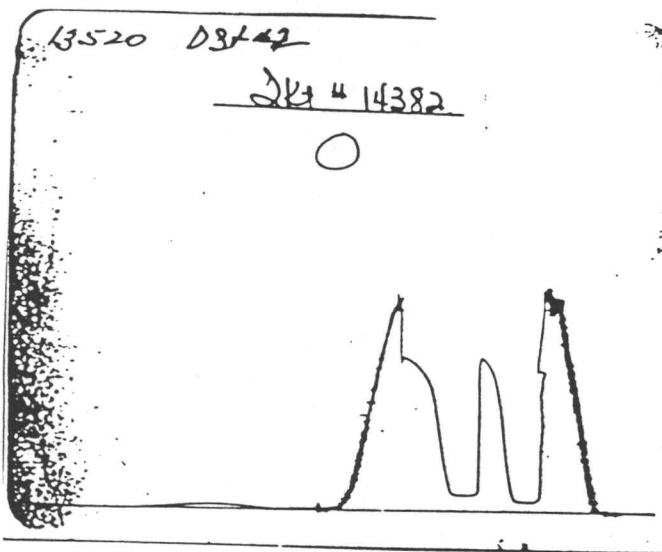
(E) 114 PSI TO (F) : 116

FINAL CLOSED IN PERIOD MIN: 60

(G) 1280

FINAL HYDROSTATIC PRESSURE

(H) 1750



WESTERN TESTING CO. INC.
WICHITA-KANSAS

Pressure Transient Report

COMPANY : FAIRCHILD EXPLORATION INC.
RIG : RENO-KANSAS
FIELD : ADKINS
WELL : #1
DATE : 8-15-88
GAUGE NO : 4332

OPERATIONAL COMMENTS

RECOVERED 2400 FEET OF GAS ABOVE FLUID.

COMPANY : FAIRCHILD EXPLORATION INC.
 WELL : #1
 GAUGE # : 4332
 DATE : 15/ 8/88

FIELD : ADKINS
 JOB # : 14382
 DEPTH : 3695
 TEST :

DATA No.	REAL TIME HR:MN:SS	ELAPSE TIME DELTA HOURS	PRESSURE PSIG	TEMP DEG F	DELTA P Pi-P(i-1)
INITIAL FLOW					
2	10:15: 0	0.000	61.000	118.00	0.000
3	10:19:59	0.083	61.000	118.00	0.000
4	10:25: 0	0.167	61.000	118.00	0.000
5	10:30: 0	0.250	61.000	118.00	0.000
6	10:34:59	0.333	61.000	118.00	0.000
7	10:40: 0	0.417	63.000	118.00	2.000
8	10:45: 0	0.500	66.000	118.00	3.000
INITIAL SHUT-IN					
9	10:48: 0	0.550	116.000	118.00	50.000
10	10:51: 0	0.600	213.000	118.00	97.000
11	10:54: 0	0.650	335.000	118.00	122.000
12	10:57: 0	0.700	482.000	118.00	147.000
13	11: 0: 0	0.750	653.000	118.00	171.000
14	11: 3: 0	0.800	806.000	118.00	153.000
15	11: 6: 0	0.850	946.000	118.00	140.000
16	11: 9: 0	0.900	1045.000	118.00	99.000
17	11:12: 0	0.950	1117.000	118.00	72.000
18	11:15: 0	1.000	1168.000	118.00	51.000
19	11:18: 0	1.050	1206.000	118.00	38.000
20	11:21: 0	1.100	1237.000	118.00	31.000
21	11:24: 0	1.150	1261.000	118.00	24.000
22	11:27: 0	1.200	1280.000	118.00	19.000
23	11:30: 0	1.250	1290.000	118.00	10.000
FINAL FLOW					
24	11:31: 0	1.267	114.000	118.00	-1176.000
25	11:34:59	1.333	114.000	118.00	0.000
26	11:40: 0	1.417	114.000	118.00	0.000
27	11:45: 0	1.500	114.000	118.00	0.000
28	11:49:59	1.583	114.000	118.00	0.000
29	11:55: 0	1.667	114.000	118.00	0.000
30	12: 0: 0	1.750	116.000	118.00	2.000
FINAL SHUT-IN					
31	12: 3: 0	1.800	168.000	118.00	52.000
32	12: 6: 0	1.850	272.000	118.00	104.000
33	12: 9: 0	1.900	383.000	118.00	111.000
34	12:12: 0	1.950	510.000	118.00	127.000
35	12:15: 0	2.000	660.000	118.00	150.000
36	12:18: 0	2.050	797.000	118.00	137.000
37	12:21: 0	2.100	908.000	118.00	111.000
38	12:24: 0	2.150	982.000	118.00	74.000
39	12:27: 0	2.200	1043.000	118.00	61.000
40	12:30: 0	2.250	1089.000	118.00	46.000
41	12:33: 0	2.300	1125.000	118.00	36.000
42	12:36: 0	2.350	1159.000	118.00	34.000
43	12:39: 0	2.400	1185.000	118.00	26.000
44	12:42: 0	2.450	1206.000	118.00	21.000
45	12:45: 0	2.500	1223.000	118.00	17.000
46	12:48: 0	2.550	1239.000	118.00	16.000
47	12:51: 0	2.600	1253.000	118.00	14.000
48	12:54: 0	2.650	1263.000	118.00	10.000

COMPANY : FAIRCHILD EXPLORATION INC.
WELL : #1
GAUGE # : 4332
DATE : 15/ 8/88

FIELD : ADKINS
JOB # : 14382
DEPTH : 3695
TEST :

DATA No.	REAL TIME HR:MN:SS	ELAPSE TIME DELTA HOURS	PRESSURE PSIG	TEMP DEG F	DELTA P Pi-P(i-1)
49	12:57: 0	2.700	1274.000	118.00	11.000
50	13: 0: 0	2.750	1280.000	118.00	6.000

WESTERN TESTING CO. INC.

FORMATION TEST REPORT



Home Office:

Wichita, Kansas 67201

P.O. Box 1599

Phone (316) 262-5861

WESTERN TESTING CO. INC.
SUBSURFACE PRESSURE SURVEY

DATE : 8-17-88
CUSTOMER : FAIRCHILD EXPLORATION INC.
WELL : #1 TEST: 3
ELEVATION : 1684 GL
SECTION : 15
RANGE : 9W COUNTY : RENO
GAUGE SN# : 4332 RANGE : 4200
TICKET : 14383
LEASE : ADKINS
GEOLOGIST : T PIERCE
FORMATION : VIOLA
TOWNSHIP : 26S
STATE : KANSAS
CLOCK : 12

INTERVAL FROM : 4144 TO : 4162 TOTAL DEPTH : 4162
DEPTH OF SELECTIVE ZONE :
PACKER DEPTH : 4139 SIZE : 6.63
PACKER DEPTH : 4144 SIZE : 6.63
PACKER DEPTH : SIZE :
PACKER DEPTH : SIZE :

DRILLING CON. : RED TIGER RIG 4
MUD TYPE : CHEMICAL VISCOSITY : 53
WEIGHT : 9.3 WATER LOSS (CC) : 12.0
CHLORIDES (PPM) : 12000
JARS-MAKE : NO SERIAL NUMBER :
DID WELL FLOW ? : NO REVERSED OUT ? : NO

DRILL COLLAR LENGTH : 0 FT I.D. inch : 0.00
WEIGHT PIPE LENGTH : 945 FT I.D. inch : 2.50
DRILL PIPE LENGTH : 3179 FT I.D. inch : 3.80
TEST TOOL LENGTH : 20 FT TOOL SIZE : 5.50
ANCHOR LENGTH : 18 FT ANCHOR SIZE : 5.50
SURFACE CHOKE SIZE : .75 IN BOTTOM CHOKE SIZE : .75
MAIN HOLE SIZE : 7.875 IN TOOL JOINT SIZE : 4.5 XH

BLOW COMMENT #1 : INITIAL FLOW-WEAK TO A GOOD 8" BLOW.
BLOW COMMENT #2 : FINAL FLOW-8' TO 9" BLOW.
BLOW COMMENT #3 :
BLOW COMMENT #4 :

RECOVERED : 90 FT OF: GAS & OIL CUT WATER CUT MUD
 5% GAS-5% OIL-15% WTR-75% MUD

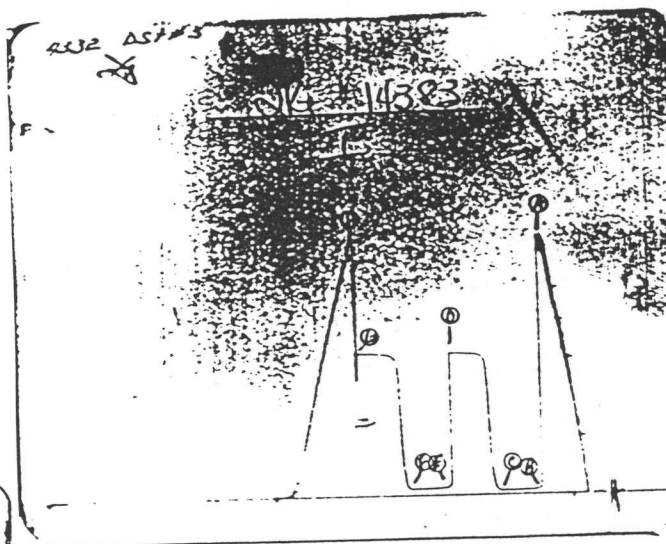
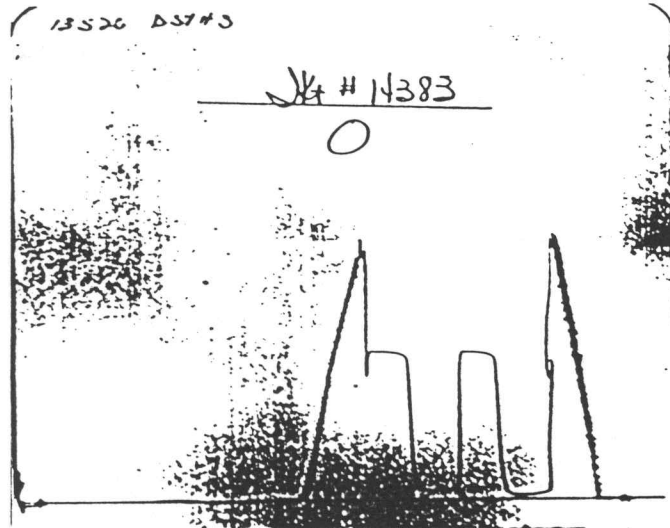
Total Barrels Fluid = 0.55
 Total Fluid Prod Rate = 8.74 BFPD
 Indicated Oil Rate = 0.44 BOPD
 Indicated Wtr Rate = 1.46 BWPD

REMARK 1 :
 REMARK 2 : RECOVERED 680 FEET OF GAS ABOVE FLUID.
 REMARK 3 :
 REMARK 4 :

SET PACKER(S) : 9:30 AM
 WELL TEMPERATURE : 132
 INITIAL HYDROSTATIC PRESSURE
 INITIAL FLOW PERIOD MIN: 45
 INITIAL CLOSED IN PERIOD MIN: 60
 FINAL FLOW PERIOD MIN: 45
 FINAL CLOSED IN PERIOD MIN: 63
 FINAL HYDROSTATIC PRESSURE

TIME STARTED OFF BOTTOM : 1:00 PM

(A)	2112		
(B)	36	PSI TO (C) :	36
(D)	1218		
(E)	57	PSI TO (F) :	57
(G)	1224		
(H)	2061		



WESTERN TESTING CO. INC.
WICHITA-KANSAS

Pressure Transient Report

COMPANY : FAIRCHILD EXPLORATION INC.
RIG : RENO-KANSAS
FIELD : ADKINS
WELL : #1
DATE : 8-17-88
GAUGE NO : 4332

OPERATIONAL COMMENTS

RECOVERED 680 FEET OF GAS ABOVE FLUID.

COMPANY : FAIRCHILD EXPLORATION INC.
 WELL : #1
 GAUGE # : 4332
 DATE : 17/ 8/88

FIELD : ADKINS
 JOB # : 14383
 DEPTH : 4162
 TEST :

DATA No.	REAL TIME HR:MN:SS	ELAPSE TIME DELTA HOURS	PRESSURE PSIG	TEMP DEG F	DELTA P Pi-P(i-1)
INITIAL FLOW					
2	9:30: 0	0.000	36.000	132.00	0.000
3	9:34:59	0.083	36.000	132.00	0.000
4	9:40: 0	0.167	36.000	132.00	0.000
5	9:45: 0	0.250	36.000	132.00	0.000
6	9:49:59	0.333	36.000	132.00	0.000
7	9:55: 0	0.417	36.000	132.00	0.000
8	10: 0: 0	0.500	36.000	132.00	0.000
9	10: 4:59	0.583	36.000	132.00	0.000
10	10:10: 0	0.667	36.000	132.00	0.000
11	10:15: 0	0.750	36.000	132.00	0.000
INITIAL SHUT-IN					
12	10:18: 0	0.800	49.000	132.00	13.000
13	10:21: 0	0.850	99.000	132.00	50.000
14	10:24: 0	0.900	225.000	132.00	126.000
15	10:27: 0	0.950	419.000	132.00	194.000
16	10:30: 0	1.000	748.000	132.00	329.000
17	10:33: 0	1.050	1057.000	132.00	309.000
18	10:36: 0	1.100	1163.000	132.00	106.000
19	10:39: 0	1.150	1190.000	132.00	27.000
20	10:42: 0	1.200	1200.000	132.00	10.000
21	10:45: 0	1.250	1207.000	132.00	7.000
22	10:48: 0	1.300	1210.000	132.00	3.000
23	10:51: 0	1.350	1211.000	132.00	1.000
24	10:54: 0	1.400	1212.000	132.00	1.000
25	10:57: 0	1.450	1213.000	132.00	1.000
26	11: 0: 0	1.500	1214.000	132.00	1.000
27	11: 3: 0	1.550	1215.000	132.00	1.000
28	11: 6: 0	1.600	1216.000	132.00	1.000
29	11: 9: 0	1.650	1217.000	132.00	1.000
30	11:12: 0	1.700	1218.000	132.00	1.000
31	11:15: 0	1.750	1218.000	132.00	0.000
FINAL FLOW					
32	11:16: 0	1.767	57.000	132.00	-1161.000
33	11:19:59	1.833	57.000	132.00	0.000
34	11:25: 0	1.917	57.000	132.00	0.000
35	11:30: 0	2.000	57.000	132.00	0.000
36	11:34:59	2.083	57.000	132.00	0.000
37	11:40: 0	2.167	57.000	132.00	0.000
38	11:45: 0	2.250	57.000	132.00	0.000
39	11:49:59	2.333	57.000	132.00	0.000
40	11:55: 0	2.417	57.000	132.00	0.000
41	12: 0: 0	2.500	57.000	132.00	0.000
FINAL SHUT-IN					
42	12: 3: 0	2.550	64.000	132.00	7.000
43	12: 6: 0	2.600	114.000	132.00	50.000
44	12: 9: 0	2.650	309.000	132.00	195.000
45	12:12: 0	2.700	725.000	132.00	416.000
46	12:15: 0	2.750	1026.000	132.00	301.000
47	12:18: 0	2.800	1140.000	132.00	114.000
48	12:21: 0	2.850	1180.000	132.00	40.000

COMPANY : FAIRCHILD EXPLORATION INC.
WELL : #1
GAUGE # : 4332
DATE : 17/ 8/88

FIELD : ADKINS
JOB # : 14383
DEPTH : 4162
TEST :

DATA No.	REAL TIME HR:MN:SS	ELAPSE TIME DELTA HOURS	PRESSURE PSIG	TEMP DEG F	DELTA P Pi-P(i-1)
53	12:36: 0	3.100	1218.000	132.00	2.000
54	12:39: 0	3.150	1219.000	132.00	1.000
55	12:42: 0	3.200	1220.000	132.00	1.000
56	12:45: 0	3.250	1221.000	132.00	1.000
57	12:48: 0	3.300	1221.000	132.00	0.000
58	12:51: 0	3.350	1222.000	132.00	1.000
59	12:54: 0	3.400	1223.000	132.00	1.000
60	12:57: 0	3.450	1224.000	132.00	1.000
61	13: 0: 0	3.500	1224.000	132.00	0.000
62	13: 3: 0	3.550	1224.000	132.00	0.000

WESTERN TESTING CO. INC.