

15-047-21475

# Ricketts Testing, Inc.

33-26s-18w

## CONFIDENTIAL



## ORIGINAL

JAN 22 2003

Company PICKRELL DRILLING CO., INC. Lease & Well No. BURTON "C" #1  
 Elevation 2185 K.B Formation HERRINGTON Ticket No. 2066  
 Date 11-2-02 Sec. 33 Twp. 26S Range 18W County EDWARD State KS  
 Test Approved by TERRY MCLEAD Ricketts Representative JIM RICKETTS

Formation Test No. 1 Interval Tested from 2370 ft. to 2440 ft. Total Depth 2440 ft.  
 Packer Depth 2370 ft. Size 6 3/4 in. Packer Depth \_\_\_\_\_ ft. Size \_\_\_\_\_ in.  
 Packer Depth 2367 ft. Size 6 3/4 in. Packer Depth \_\_\_\_\_ ft. Size \_\_\_\_\_ in.  
 Depth of Selective Zone Set \_\_\_\_\_

RELEASED

MAR 15 2004

RELEASED

Top Recorder Depth (Inside) 2375 Recorder Number 13306 Cap. 4625  
 Bottom Recorder Depth (Outside) 2378 ft. Recorder Number 243 Cap. 6000  
 Below Straddle Recorder Depth \_\_\_\_\_ ft. Recorder Number \_\_\_\_\_ Cap. \_\_\_\_\_

FROM CONFIDENTIAL

FROM CONFIDENTIAL

Drilling Contractor PICKRELL DRILLING RIG #1 Drill Collar Length 270 I.D. 2.25 in.  
 Mud Type CHEMICAL Viscosity 55 Weight Pipe Length \_\_\_\_\_ I.D. \_\_\_\_\_ in.  
 Weight 9.2 Water Loss N/A cc. Drill Pipe Length 2078 I.D. 3.25 in.  
 Chlorides N/A P.P.M. Test Tool Length 22 ft. Tool Size 5 1/2 in.  
 Jars: Make \_\_\_\_\_ Serial Number \_\_\_\_\_ Anchor Length 70 ft. Size 5 1/2 in.  
 Did Well Flow? NO Reversed Out NO Surface Choke Size 3/4 in. Bottom Choke Size 3/4 in.  
 Gravity Oil \_\_\_\_\_ Main Hole Size 7 7/8 in. Tool Joint Size 4 1/2 XH in.

Blow: STRONG BLOW 12 MINUTES INITIAL FLOW PERIOD.  
STRONG BLOW FINAL FLOW PERIOD.

Recovered 180 ft. of THIN MUD.  
 Recovered \_\_\_\_\_ ft. of \_\_\_\_\_  
 Recovered \_\_\_\_\_ ft. of \_\_\_\_\_  
 Recovered \_\_\_\_\_ ft. of \_\_\_\_\_  
 Recovered \_\_\_\_\_ ft. of \_\_\_\_\_

KCC

JAN 21 2003

CONFIDENTIAL

Remarks: DST FLUID CHLORIDES 97,000 PPM

Time Set Packer (s) 3:00 A.M. Time Started Off Bottom 7:30 A.M. Maximum Temperature 99°  
 Initial Hydrostatic Pressure .....(A) 1185 P.S.I.  
 Initial Flow Period .....Minutes 30 (B) 45 P.S.I. to  
 (C) 62 P.S.I.  
 Initial Closed In Period .....Minutes 60 (D) 399 P.S.I.  
 Final Flow Period .....Minutes 90 (E) 76 P.S.I. to  
 (F) 92 P.S.I.  
 Final Closed In Period .....Minutes 90 (G) 351 P.S.I.  
 Final Hydrostatic Pressure .....(H) 1177 P.S.I.

CONFIDENTIAL

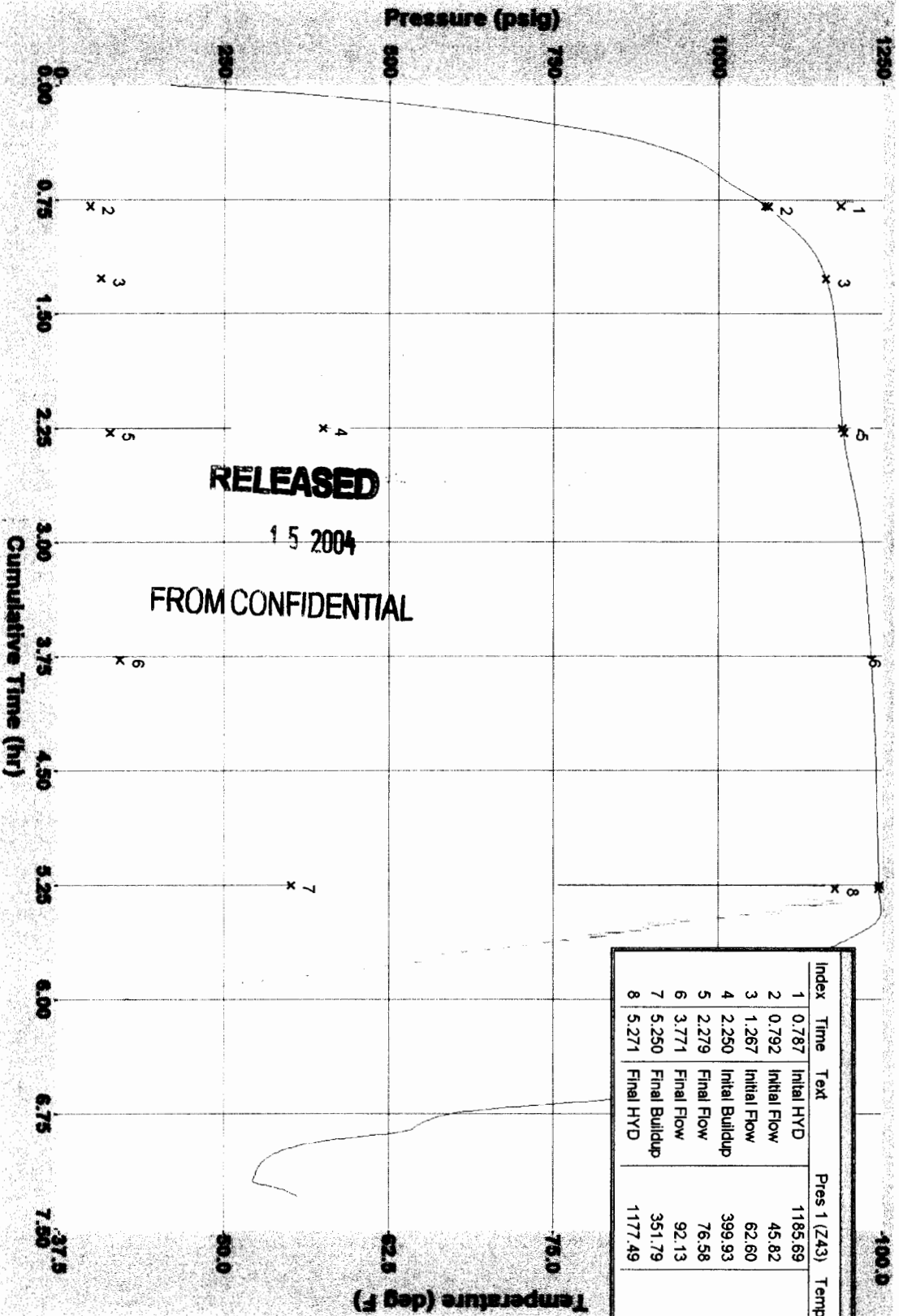
ORIGINAL



Company Name  
Well Name  
Type of Test  
Date(s) of Test

Pickrell Drilling Co., Inc.  
Burton "C" #1  
DST #1 2370- 2440'  
11-2-2002

# 11-2-2002 DST #1 Burton "C" #1



RELEASED

15 2004

FROM CONFIDENTIAL

KCC

JAN 21 2003

CONFIDENTIAL



# Ricketts Testing, Inc.

CONFIDENTIAL



ORIGINAL

JAN 22 2003  
CONFIDENTIAL

Company PICKRELL DRILLING CO., INC. Lease & Well No. BURTON "C" #1  
 Elevation 2185 K.G. Formation RED EAGLE Ticket No. 2067  
 Date 11-3-02 Sec. 33 Twp. 26S Range 18W County EDWARD State KS  
 Test Approved by TERRY MCLEAD Ricketts Representative JIM RICKETTS

Formation Test No. 2 Interval Tested from RELEASED ft. to 3045 ft. Total Depth 3045 ft.  
 Packer Depth 2992 ft. Size 6 3/4 in. Packer Depth \_\_\_\_\_ ft. Size \_\_\_\_\_ in.  
 Packer Depth 2989 ft. Size 6 3/4 in. Packer Depth \_\_\_\_\_ ft. Size \_\_\_\_\_ in.  
 Depth of Selective Zone Set \_\_\_\_\_

RELEASED  
MAR 15 2004

FROM CONFIDENTIAL

Top Recorder Depth (Inside) 2997 ft. Recorder Number 13306 Cap. 4625  
 Bottom Recorder Depth (Outside) 3000 ft. Recorder Number 243 Cap. 6000  
 Below Straddle Recorder Depth \_\_\_\_\_ ft. Recorder Number \_\_\_\_\_ Cap. \_\_\_\_\_

Drilling Contractor PICKRELL DRILLING CO. RIG #1 Drill Collar Length 270 I.D. 2.25 in.  
 Mud Type CHEMICAL Viscosity 50 Weight Pipe Length \_\_\_\_\_ I.D. \_\_\_\_\_ in.  
 Weight 8.7 Water Loss 8.0 cc. Drill Pipe Length 2700 I.D. 3.25 in.  
 Chlorides 4,500 P.P.M. Test Tool Length 22 ft. Tool Size. 5 1/2 in.  
 Jars: Make \_\_\_\_\_ Serial Number \_\_\_\_\_ Anchor Length 53 ft. Size 5 1/2 in.  
 Did Well Flow? NO Reversed Out NO Surface Choke Size 3/4 in. Bottom Choke Size 3/4 in.  
 Gravity Oil \_\_\_\_\_ Main Hole Size 7 7/8 in. Tool Joint Size 4 1/2 XH in.

Blow: STRONG BLOW. GAS TO SURFACE IN 3 MINUTES INITIAL FLOW PERIOD. 700,000 CFPD TO 542,000 CFPD

Recovered 420 ft. of MUD CUT WATER. KCC  
 Recovered \_\_\_\_\_ ft. of \_\_\_\_\_  
 Recovered \_\_\_\_\_ ft. of \_\_\_\_\_  
 Recovered \_\_\_\_\_ ft. of \_\_\_\_\_  
 Recovered \_\_\_\_\_ ft. of \_\_\_\_\_

JAN 21 2003  
CONFIDENTIAL

Remarks: DST FLUID CHLORIDES 102,000 PPM SOME PLUGGING

Time Set Packer (s)	Time Started Off Bottom	Maximum Temperature
<u>12:33 P.M.</u>	<u>4:37 P.M.</u>	<u>110°</u>
Initial Hydrostatic Pressure.....(A)	<u>1394</u>	P.S.I.
Initial Flow Period .....Minutes	<u>30</u>	(B) <u>213</u> P.S.I. to
	(C) <u>276</u>	P.S.I.
Initial Closed In Period .....Minutes	<u>60</u>	(D) <u>1017</u> P.S.I.
Final Flow Period .....Minutes	<u>60</u>	(E) <u>304</u> P.S.I. to
	(F) <u>266</u>	P.S.I.
Final Closed In Period .....Minutes	<u>90</u>	(G) <u>1011</u> P.S.I.
Final Hydrostatic Pressure .....(H)	<u>1310</u>	P.S.I.



# Pressure Test Report

## COMPANY INFORMATION

Company Name Pickrell Drilling Co. Inc.  
Representative  
Phone  
Fax  
Address

E-Mail Address  
Service Company

## WELL INFORMATION

Well Name Burton "C" # 1  
Well Location 33-26 s- 18 w C s/2 NE  
Field and Pool Sturgeon pool  
Status (Oil, Gas, Water, Injection) Gas & Oil  
Perforated Intervals  
Mid-point of Perforated Intervals (MPP)  
Drilling Rig Number Pickrell Drilling Rig #1  
Elevations  
    Kelly Bushing (KB) 2185 KB  
    Casing Flange (CF)  
    KB-CF  
    Ground Level  
Plug Back Total Depth  
Total Depth 3045'  
Production Casing  
Production Tubing

## TEST INFORMATION

Type of Test DST #2 2992- 3045'  
Date(s) of Test 11-3-2002  
Dead-weight Gauge Tubing Pressure  
Dead-weight Gauge Casing Pressure  
Shut-in Date (Duration) 11-3-2002  
Date / Time on Bottom 11-3-2002 12:33 PM  
Date / Time off Bottom 11-3-2002 4:33 PM  
Probe Serial Number Z43  
Probe Offset from End of Tool String  
Run Depth at Probe Pressure Port

## PRESSURE TEST RESULTS

Maximum Recorded Probe Pressure 1433.5 psig  
Maximum Recorded Probe Temperature 110.5 deg F  
Final Buildup Pressure  
Gradient Survey Information  
    Extrapolated Pressure to MPP  
    Final Gradient at Depth  
Job Number



Company Name Pickrell Drilling Co. Inc.  
 Well Name Burton "C" # 1  
 Type of Test DST #2 2992- 3045'  
 Date(s) of Test 11-3-2002



**PROBE INFORMATION**

Probe Serial Number Z43  
 Model Level II  
 Pressure  
 Calibrated Pressure Range 0.0 - 6000.0 psig  
 Accuracy 0.05% FS  
 Resolution 0.0015% FS  
 Temperature  
 Calibrated Temperature Range -2.7 - 303.7 deg F  
 Accuracy 0.25% FS  
 Resolution 0.002% FS  
 Calibration File Used for Reports Z43DE26A.CAL

**PROGRAMMING DETAILS**

<u>Step</u>	<u>Sample Mode</u>	<u>Period</u>	<u>Duration</u>	<u>Comment</u>
0	Pause	5 seconds	25 seconds	Test mode
1	Pressure Trigger	30 seconds	indefinite	Trig @ 20 psi
2	Normal	3 minutes	45 minutes	
3	Overrun	15 seconds	end of memory	Fill remaining memory

Program Start Time Nov 03/2002 @ 11:41:19  
 Program End Time Nov 03/2002 @ 18:30:49  
 Total Samples Taken 1474  
 Usage for this Test 0.0540 Ah  
 Generic Data File Name Z43NO03A.GEN



Company Name Pickrell Drilling Co. Inc.  
 Well Name Burton "C" # 1  
 Type of Test DST #2 2992- 3045'  
 Date(s) of Test 11-3-2002



Date	Time	Cum. T. 1 (Z43)	Pres 1 (Z43)	Temp 1 (Z43)
		hr	psig	deg F
2002/11/03	11:41:19	0.0000	36.214	77.576
2002/11/03	11:44:19	0.0500	63.294	78.458
2002/11/03	11:47:19	0.1000	89.781	79.345
2002/11/03	11:50:19	0.1500	116.415	80.028
2002/11/03	11:53:19	0.2000	113.893	80.654
2002/11/03	11:56:19	0.2500	197.207	81.181
2002/11/03	11:59:19	0.3000	286.305	81.932
2002/11/03	12:02:19	0.3500	403.964	82.677
2002/11/03	12:05:19	0.4000	474.909	83.338
2002/11/03	12:08:19	0.4500	603.152	83.979
2002/11/03	12:11:19	0.5000	718.892	84.970
2002/11/03	12:14:19	0.5500	836.227	86.248
2002/11/03	12:17:19	0.6000	995.279	87.454
2002/11/03	12:20:19	0.6500	1036.918	88.441
2002/11/03	12:23:19	0.7000	1122.253	89.238
2002/11/03	12:26:19	0.7500	1280.434	90.095
2002/11/03	12:27:49	0.7750	1267.132	90.477
2002/11/03	12:29:19	0.8000	1323.067	90.916
2002/11/03	12:30:49	0.8250	1349.995	91.368
2002/11/03	12:32:19	0.8500	1338.619	91.843
2002/11/03	12:33:49	0.8750	1365.036	92.302
2002/11/03	12:35:19	0.9000	1371.975	92.732
2002/11/03	12:36:49	0.9250	1337.786	93.164
2002/11/03	12:38:19	0.9500	1402.586	93.560
<b>Initial HYD</b>				
2002/11/03	12:39:34	0.9708	1394.344	93.882
2002/11/03	12:39:49	0.9750	513.528	94.019
2002/11/03	12:41:19	1.0000	293.368	94.420
<b>Initial Flow</b>				
2002/11/03	12:42:04	1.0125	213.355	94.654
2002/11/03	12:42:49	1.0250	254.816	94.883
2002/11/03	12:44:19	1.0500	280.427	95.392
2002/11/03	12:45:49	1.0750	295.157	95.931
2002/11/03	12:47:19	1.1000	295.321	96.463
2002/11/03	12:48:49	1.1250	300.400	96.967
2002/11/03	12:50:19	1.1500	297.702	97.428
2002/11/03	12:51:49	1.1750	285.578	97.866
2002/11/03	12:53:19	1.2000	273.893	98.287
2002/11/03	12:54:49	1.2250	286.118	98.681
2002/11/03	12:56:19	1.2500	292.528	99.090
2002/11/03	12:57:49	1.2750	300.077	99.493
2002/11/03	12:59:19	1.3000	291.487	99.889
2002/11/03	13:00:49	1.3250	287.746	100.265
2002/11/03	13:02:19	1.3500	277.710	100.638
2002/11/03	13:03:49	1.3750	280.306	100.976
2002/11/03	13:05:19	1.4000	285.177	101.298
<b>Initial Flow</b>				
2002/11/03	13:06:34	1.4208	276.100	101.561
2002/11/03	13:06:49	1.4250	322.862	101.595
2002/11/03	13:08:19	1.4500	860.793	101.822



Company Name Pickrell Drilling Co. Inc.  
Well Name Burton "C" # 1  
Type of Test DST #2 2992- 3045'  
Date(s) of Test 11-3-2002



Date	Time	Cum. T. 1 (Z43)	Pres 1 (Z43)	Temp 1 (Z43)
		hr	psig	deg F
2002/11/03	13:09:49	1.4750	913.693	102.207
2002/11/03	13:11:19	1.5000	936.724	102.655
2002/11/03	13:12:49	1.5250	951.135	103.086
2002/11/03	13:14:19	1.5500	961.447	103.489
2002/11/03	13:15:49	1.5750	969.385	103.825
2002/11/03	13:17:19	1.6000	975.678	104.140
2002/11/03	13:18:49	1.6250	980.655	104.403
2002/11/03	13:20:19	1.6500	984.861	104.628
2002/11/03	13:21:49	1.6750	988.305	104.832
2002/11/03	13:23:19	1.7000	991.385	105.015
2002/11/03	13:24:49	1.7250	993.993	105.168
2002/11/03	13:26:19	1.7500	996.283	105.309
2002/11/03	13:27:49	1.7750	998.251	105.440
2002/11/03	13:29:19	1.8000	1000.134	105.552
2002/11/03	13:30:49	1.8250	1001.758	105.654
2002/11/03	13:32:19	1.8500	1003.115	105.751
2002/11/03	13:33:49	1.8750	1004.459	105.841
2002/11/03	13:35:19	1.9000	1005.596	105.922
2002/11/03	13:36:49	1.9250	1006.698	106.002
2002/11/03	13:38:19	1.9500	1007.734	106.075
2002/11/03	13:39:49	1.9750	1008.630	106.138
2002/11/03	13:41:19	2.0000	1009.473	106.205
2002/11/03	13:42:49	2.0250	1010.240	106.264
2002/11/03	13:44:19	2.0500	1011.008	106.324
2002/11/03	13:45:49	2.0750	1011.648	106.376
2002/11/03	13:47:19	2.1000	1012.286	106.426
2002/11/03	13:48:49	2.1250	1012.853	106.468
2002/11/03	13:50:19	2.1500	1013.409	106.518
2002/11/03	13:51:49	2.1750	1013.941	106.567
2002/11/03	13:53:19	2.2000	1014.459	106.608
2002/11/03	13:54:49	2.2250	1014.893	106.650
2002/11/03	13:56:19	2.2500	1015.349	106.689
2002/11/03	13:57:49	2.2750	1015.781	106.731
2002/11/03	13:59:19	2.3000	1016.161	106.758
2002/11/03	14:00:49	2.3250	1016.536	106.803
2002/11/03	14:02:19	2.3500	1016.870	106.828
2002/11/03	14:03:49	2.3750	1017.205	106.864
2002/11/03	14:05:19	2.4000	1017.487	106.893
<b>Initial Buildup</b>				
2002/11/03	14:06:34	2.4208	1017.435	106.916
2002/11/03	14:06:49	2.4250	372.659	106.995
<b>Final Flow</b>				
2002/11/03	14:07:49	2.4417	304.877	107.010
2002/11/03	14:08:19	2.4500	286.456	106.977
2002/11/03	14:09:49	2.4750	252.864	106.822
2002/11/03	14:11:19	2.5000	225.965	106.695
2002/11/03	14:12:49	2.5250	240.119	106.588
2002/11/03	14:14:19	2.5500	229.808	106.522
2002/11/03	14:15:49	2.5750	233.969	106.466
2002/11/03	14:17:19	2.6000	243.438	106.419



Company Name Pickrell Drilling Co. Inc.  
 Well Name Burton "C" # 1  
 Type of Test DST #2 2992- 3045'  
 Date(s) of Test 11-3-2002



Date	Time	Cum. T. 1 (Z43)	Pres 1 (Z43)	Temp 1 (Z43)
		hr	psig	deg F
2002/11/03	14:18:49	2.6250	240.536	106.390
2002/11/03	14:20:19	2.6500	244.194	106.369
2002/11/03	14:21:49	2.6750	243.661	106.356
2002/11/03	14:23:19	2.7000	252.063	106.340
2002/11/03	14:24:49	2.7250	245.310	106.320
2002/11/03	14:26:19	2.7500	244.949	106.311
2002/11/03	14:27:49	2.7750	242.788	106.291
2002/11/03	14:29:19	2.8000	245.023	106.281
2002/11/03	14:30:49	2.8250	246.495	106.264
2002/11/03	14:32:19	2.8500	245.189	106.252
2002/11/03	14:33:49	2.8750	245.239	106.243
2002/11/03	14:35:19	2.9000	246.295	106.228
2002/11/03	14:36:49	2.9250	246.763	106.227
2002/11/03	14:38:19	2.9500	247.053	106.227
2002/11/03	14:39:49	2.9750	222.629	106.230
2002/11/03	14:41:19	3.0000	242.913	106.223
2002/11/03	14:42:49	3.0250	249.408	106.232
2002/11/03	14:44:19	3.0500	246.580	106.264
2002/11/03	14:45:49	3.0750	243.397	106.304
2002/11/03	14:47:19	3.1000	245.465	106.345
2002/11/03	14:48:49	3.1250	248.261	106.381
2002/11/03	14:50:19	3.1500	249.916	106.417
2002/11/03	14:51:49	3.1750	250.028	106.439
2002/11/03	14:53:19	3.2000	253.081	106.461
2002/11/03	14:54:49	3.2250	251.945	106.473
2002/11/03	14:56:19	3.2500	250.255	106.488
2002/11/03	14:57:49	3.2750	279.930	106.486
2002/11/03	14:59:19	3.3000	276.112	106.513
2002/11/03	15:00:49	3.3250	269.889	106.558
2002/11/03	15:02:19	3.3500	272.205	106.608
2002/11/03	15:03:49	3.3750	269.336	106.666
2002/11/03	15:05:19	3.4000	267.756	106.725
<b>Final Flow</b>				
2002/11/03	15:06:49	3.4250	266.657	106.783
2002/11/03	15:08:19	3.4500	784.928	106.754
2002/11/03	15:09:49	3.4750	861.079	106.885
2002/11/03	15:11:19	3.5000	890.836	107.103
2002/11/03	15:12:49	3.5250	909.385	107.364
2002/11/03	15:14:19	3.5500	922.611	107.627
2002/11/03	15:15:49	3.5750	932.787	107.872
2002/11/03	15:17:19	3.6000	940.958	108.099
2002/11/03	15:18:49	3.6250	947.750	108.295
2002/11/03	15:20:19	3.6500	953.437	108.480
2002/11/03	15:21:49	3.6750	958.307	108.646
2002/11/03	15:23:19	3.7000	962.526	108.783
2002/11/03	15:24:49	3.7250	966.246	108.914
2002/11/03	15:26:19	3.7500	969.534	109.042
2002/11/03	15:27:49	3.7750	972.567	109.148
2002/11/03	15:29:19	3.8000	975.274	109.258
2002/11/03	15:30:49	3.8250	977.752	109.355



Company Name Pickrell Drilling Co. Inc.  
 Well Name Burton "C" # 1  
 Type of Test DST #2 2992- 3045'  
 Date(s) of Test 11-3-2002



Date	Time	Cum. T. 1 (Z43)	Pres 1 (Z43)	Temp 1 (Z43)
		hr	psig	deg F
2002/11/03	15:32:19	3.8500	979.926	109.443
2002/11/03	15:33:49	3.8750	981.955	109.526
2002/11/03	15:35:19	3.9000	983.801	109.602
2002/11/03	15:36:49	3.9250	985.477	109.670
2002/11/03	15:38:19	3.9500	987.061	109.742
2002/11/03	15:39:49	3.9750	988.510	109.796
2002/11/03	15:41:19	4.0000	989.862	109.857
2002/11/03	15:42:49	4.0250	991.179	109.913
2002/11/03	15:44:19	4.0500	992.323	109.954
2002/11/03	15:45:49	4.0750	993.442	110.005
2002/11/03	15:47:19	4.1000	994.518	110.044
2002/11/03	15:48:49	4.1250	995.529	110.088
2002/11/03	15:50:19	4.1500	996.455	110.122
2002/11/03	15:51:49	4.1750	997.351	110.154
2002/11/03	15:53:19	4.2000	998.194	110.188
2002/11/03	15:54:49	4.2250	999.010	110.217
2002/11/03	15:56:19	4.2500	999.748	110.248
2002/11/03	15:57:49	4.2750	1000.467	110.266
2002/11/03	15:59:19	4.3000	1001.161	110.289
2002/11/03	16:00:49	4.3250	1001.851	110.311
2002/11/03	16:02:19	4.3500	1002.495	110.329
2002/11/03	16:03:49	4.3750	1003.090	110.349
2002/11/03	16:05:19	4.4000	1003.687	110.365
2002/11/03	16:06:49	4.4250	1004.104	110.376
2002/11/03	16:08:19	4.4500	1004.727	110.388
2002/11/03	16:09:49	4.4750	1005.208	110.403
2002/11/03	16:11:19	4.5000	1005.742	110.419
2002/11/03	16:12:49	4.5250	1006.183	110.430
2002/11/03	16:14:19	4.5500	1006.653	110.435
2002/11/03	16:15:49	4.5750	1007.113	110.451
2002/11/03	16:17:19	4.6000	1007.486	110.455
2002/11/03	16:18:49	4.6250	1007.926	110.460
2002/11/03	16:20:19	4.6500	1008.322	110.473
2002/11/03	16:21:49	4.6750	1008.693	110.484
2002/11/03	16:23:19	4.7000	1009.111	110.482
2002/11/03	16:24:49	4.7250	1009.482	110.491
2002/11/03	16:26:19	4.7500	1009.805	110.500
2002/11/03	16:27:49	4.7750	1010.123	110.502
2002/11/03	16:29:19	4.8000	1010.487	110.507
2002/11/03	16:30:49	4.8250	1010.808	110.512
2002/11/03	16:32:19	4.8500	1011.078	110.516
2002/11/03	16:33:49	4.8750	1011.391	110.527
2002/11/03	16:35:19	4.9000	1011.659	110.527
<b>Final Buildup</b>				
2002/11/03	16:35:49	4.9083	1011.757	110.530
2002/11/03	16:36:49	4.9250	1327.846	110.511
2002/11/03	16:38:19	4.9500	1311.968	110.521
2002/11/03	16:39:49	4.9750	1310.876	110.473
<b>Final HYD</b>				
2002/11/03	16:40:19	4.9833	1310.927	110.442

CONFIDENTIAL

KCC  
JAN 21 2003

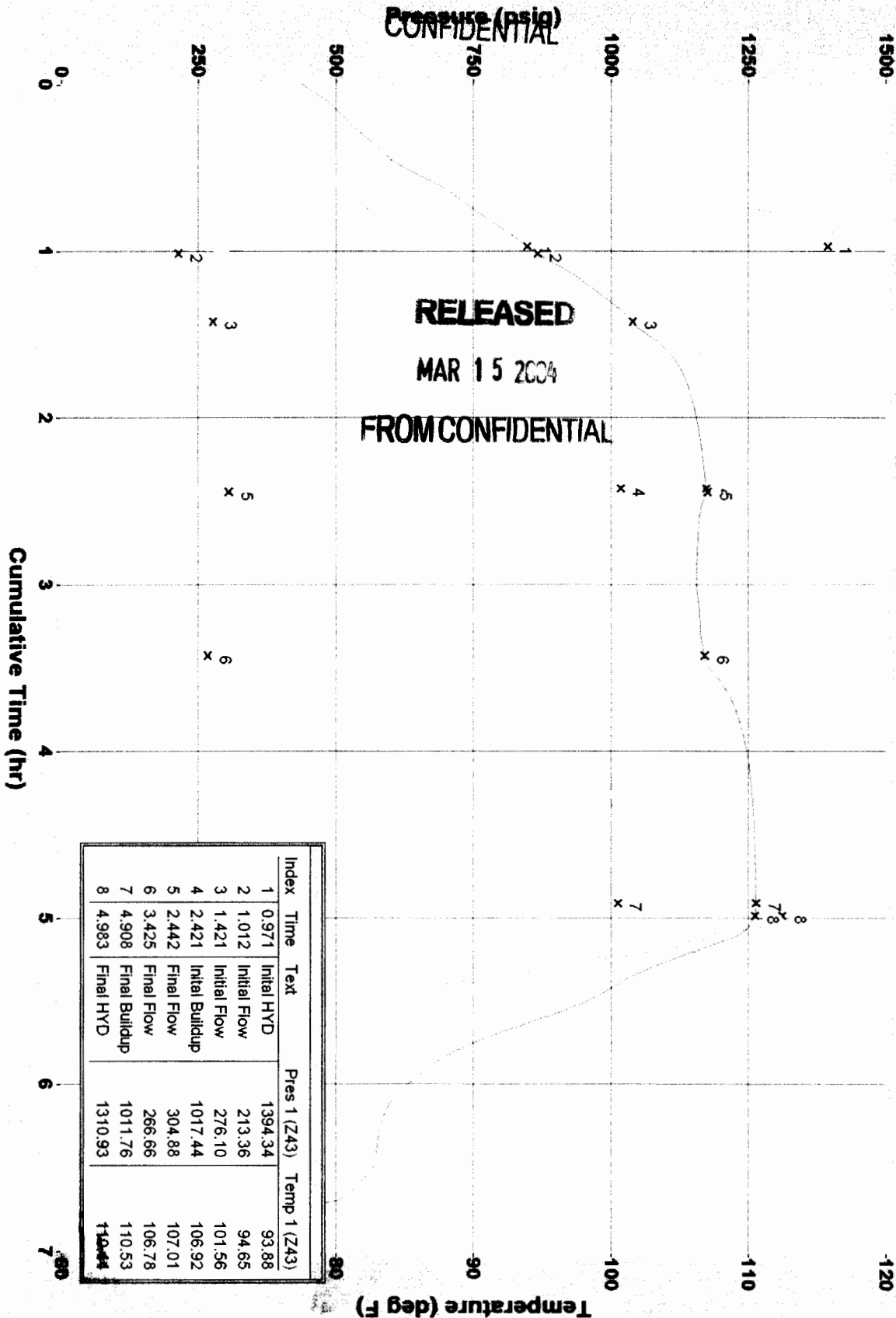
ORIGINAL



Company Name  
Well Name  
Type of Test  
Date(s) of Test

Pickrell Drilling Co. Inc.  
Burton "C" # 1  
DST #2 2892-3045'  
11-3-2002

# 11-3-2002 DST#2 Burton "C" #1



# Ricketts Testing, Inc.

CONFIDENTIAL



KCC  
JAN 21 2003

ORIGINAL

Company PICKRELL DRILLING CO., INC. Well No. BURTON "C" #1  
 Elevation 2185 KB Formation KANSAS CITY E & F Ticket No. 2069  
 Date 11-6-02 Sec. 33 Twp. 26S Range 18W County EDWARD State KS  
 Test Approved by TERRY MCLEAD Ricketts Representative JIM RICKETTS

Formation Test No. 4 Interval Tested from 4142 4162 ft. Total Depth 4162 ft.  
 Packer Depth 4142 ft. Size 6 3/4 in. Packer Depth \_\_\_\_\_ ft. Size \_\_\_\_\_ in.  
 Packer Depth 4139 ft. Size 6 3/4 in. Packer Depth \_\_\_\_\_ ft. Size \_\_\_\_\_ in.

RELEASED  
MAR 15 2004

Depth of Selective Zone Set \_\_\_\_\_  
 Top Recorder Depth (Inside) 4147 ft. Recorder Number 13306 Cap. 4625  
 Bottom Recorder Depth (Outside) 4150 ft. Recorder Number Z43 Cap. 6000  
 Below Straddle Recorder Depth \_\_\_\_\_ ft. Recorder Number \_\_\_\_\_ Cap. \_\_\_\_\_

FROM CONFIDENTIAL

Drilling Contractor PICKRELL DRILLING RIG #1 Drill Collar Length 240 I.D. 2.25 in.  
 Mud Type CHEMICAL Viscosity 62 Weight Pipe Length \_\_\_\_\_ I.D. \_\_\_\_\_ in.  
 Weight 9.2 Water Loss 8.0 cc. Drill Pipe Length 3880 I.D. 3.25 in.  
 Chlorides 5,000 P.P.M. Test Tool Length 22 ft. Tool Size. 5 1/2 in.  
 Jars: Make \_\_\_\_\_ Serial Number \_\_\_\_\_ Anchor Length 20 ft. Size 5 1/2 in.  
 Did Well Flow? NO Reversed Out NO Surface Choke Size 3/4 in. Bottom Choke Size 3/4 in.  
 Gravity Oil \_\_\_\_\_ Main Hole Size 7 7/8 in. Tool Joint Size 4 1/2 XH in.

Blow: STRONG BLOW. GAS TO SURFACE IN 5 MINUTES FINAL SHUT-IN, TOO SMALL TO GAUGE.  
10' CLEAN OIL.

Recovered 140 ft. of SLIGHTLY MUD & WATER CUT OIL 62% OIL 15% GAS 5% WATER 18% MUD  
 Recovered 60 ft. of HEAVY OIL & WATER CUT MUD 60% OIL 18% GAS 15% MUD 7% WATER  
 Recovered 60 ft. of OIL & WATER CUT MUD 5% OIL 20% GAS 10% WATER 65% MUD  
 Recovered 60 ft. of OIL & WATER CUT MUD 5% OIL 22% GAS 8% WATER 65% MUD  
 Recovered \_\_\_\_\_ ft. of \_\_\_\_\_

Remarks: DST FLUID CHLORIDES 22,000 PPM

Time Set Packer (s) 11:10 P.M. Time Started Off Bottom 3:40 A.M. Maximum Temperature 134°  
 Initial Hydrostatic Pressure.....(A) 2100 P.S.I.  
 Initial Flow Period .....Minutes 30 (B) 66 P.S.I. to  
 (C) 66 P.S.I.  
 Initial Closed In Period .....Minutes 60 (D) 1386 P.S.I.  
 Final Flow Period .....Minutes 90 (E) 66 P.S.I. to  
 (F) 113 P.S.I.  
 Final Closed In Period .....Minutes 90 (G) 1372 P.S.I.  
 Final Hydrostatic Pressure .....(H) 2072 P.S.I.

# RICKETTS TESTING, INC.

## Pressure Data

Date 11-6-02 Test Ticket No. 2069  
 Recorder No. 13306 Capacity 4625 Location 4145 Ft.  
 Clock No. \_\_\_\_\_ Elevation 2185 K.B. Well Temperature 134 °F

Point	Pressure	Time Given	Time Computed
A Initial Hydrostatic Mud	2100 P.S.I.	11:10 A M	
B First Initial Flow Pressure	66 P.S.I.	30 Mins	30 Mins.
C First Final Flow Pressure	66 P.S.I.	60 Mins	60 Mins.
D Initial Closed-in Pressure	1386 P.S.I.	90 Mins	90 Mins.
E Second Initial Flow Pressure	66 P.S.I.	90 Mins	90 Mins.
F Second Final Flow Pressure	113 P.S.I.		
G Final Closed-in Pressure	1372 P.S.I.		
H Final Hydrostatic Mud	2072 P.S.I.		

### PRESSURE BREAKDOWN

First Flow Pressure		Initial Shut-In		Second Flow Pressure		Final Shut-In	
Breakdown: <u>6</u> Inc.		Breakdown: <u>20</u> Inc.		Breakdown: <u>18</u> Inc.		Breakdown: <u>30</u> Inc.	
of <u>5</u> mins. and a		of <u>3</u> mins. and a		of <u>5</u> mins. and a		of <u>3</u> mins. and a	
final inc. of _____ Min.		final inc. of _____ Min.		final inc. of _____ Min.		final inc. of _____ Min.	
Point Mins.	Press.	Point Minutes	Press.	Point Minutes	Press.	Point Minutes	Press.
P 1	0	66	0	66	0	113	113
P 2	5	61	3	131	5	69	193
P 3	10	44	6	331	10	76	350
P 4	15	52	9	761	15	68	684
P 5	20	63	12	1230	20	70	1062
P 6	25	65	15	1320	25	72	1250
P 7	30	66	18	1342	30	75	1293
P 8	35		21	1355	35	79	1313
P 9	40		24	1364	40	83	1323
P10	45		27	1367	45	86	1331
P11	50		30	1372	50	90	1336
P12	55		33	1376	55	94	1343
P13	60		36	1378	60	97	1347
P14	65		39	1379	65	99	1349
P15	70		42	1380	70	101	1351
P16	75		45	1381	75	104	1354
P17	80		48	1382	80	107	1356
P18	85		51	1383	85	110	1357
P19	90		54	1384	90	113	1360
P20	95		57	1385			1362
			60	1386			1364

CONT'D



U.S.I. #.4 TK# 2969

CONFIDENTIAL

ORIGINAL

KCC

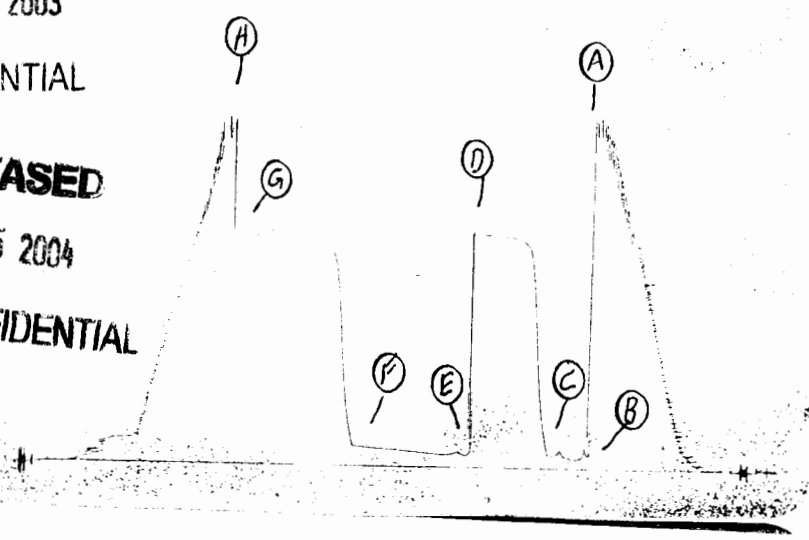
JAN 21 2003

CONFIDENTIAL

RELEASED

MAR 15 2004

FROM CONFIDENTIAL



This is an actual photograph of recorder chart.

POINT	PRESSURE		
	Field Reading	Office Reading	
(A) Initial Hydrostatic Mud	2105	2100	PSI
(B) First Initial Flow Pressure	30	66	PSI
(C) First Final Flow Pressure	75	66	PSI
(D) Initial Closed-in Pressure	1394	1386	PSI
(E) Second Initial Flow Pressure	75	66	PSI
(F) Second Final Flow Pressure	108	113	PSI
(G) Final Closed-in Pressure	1394	1372	PSI
(H) Final Hydrostatic Mud	2082	2072	PSI

# Ricketts Testing, Inc.

KCC

CONFIDENTIAL



JAN 21 2003

ORIGINAL DATA  
JAN 22 2003

Company PICKRELL DRILLING CO., INC. CONFIDENTIAL Well No. BURTON "C" #1

Elevation 2185 K.B. Formation KINDERHOOK Ticket No. 2070

Date 11-9-02 Sec. 33 Twp. 26S Range 18W County EDWARD State KS

Test Approved by TERRY MCLEAD Ricketts Representative JIM RICKETTS

Formation Test No. 5 Interval Tested from 4605 ft. to 4650 ft. Total Depth 4756 ft.

Packer Depth 4605 ft. Size 6 3/4 in. Packer Depth \_\_\_\_\_ ft. Size \_\_\_\_\_ in.

Packer Depth 4650 ft. Size \_\_\_\_\_ in. Packer Depth \_\_\_\_\_ ft. Size \_\_\_\_\_ in.

Depth of Selective Zone Set \_\_\_\_\_

Top Recorder Depth (Inside) 4610 ft. Recorder Number 13306 Cap. 4625

Bottom Recorder Depth (Outside) \_\_\_\_\_ ft. Recorder Number \_\_\_\_\_ Cap. \_\_\_\_\_

Below Straddle Recorder Depth 4753 ft. Recorder Number 13307 Cap. 4650

Drilling Contractor PICKRELL DRILLING CO., INC. Drill Collar Length 270 I.D. 2.25 in.

Mud Type CHEMICAL Viscosity 50 Weight Pipe Length \_\_\_\_\_ I.D. \_\_\_\_\_ in.

Weight 9.4 Water Loss 9.6 cc. Drill Pipe Length 4588 I.D. 3.25 in.

Chlorides 31,000 P.P.M. Test Tool Length 22 ft. Tool Size. 5 1/2 in.

Jars: Make \_\_\_\_\_ Serial Number \_\_\_\_\_ Anchor Length 45'W/106' TAILPIPE 5 1/2 in.

Did Well Flow? NO Reversed Out NO Surface Choke Size 3/4 in. Bottom Choke Size 3/4 in.

Gravity Oil \_\_\_\_\_ Main Hole Size 7 7/8 in. Tool Joint Size 4 1/2 XH in.

Blow: STRONG BLOW 4 MINUTES INITIAL FLOW PERIOD.

STRONG BLOW FINAL FLOW PERIOD.

Recovered 20 ft. of MUD

Recovered \_\_\_\_\_ ft. of \_\_\_\_\_

Recovered \_\_\_\_\_ ft. of \_\_\_\_\_

Recovered \_\_\_\_\_ ft. of \_\_\_\_\_

Recovered \_\_\_\_\_ ft. of \_\_\_\_\_

Remarks: SOME PLUGGING INITIAL FLOW PERIOD.

Time Set Packer (s) 5:30 P.M. Time Started Off Bottom 10:00 P.M. Maximum Temperature 148°

Initial Hydrostatic Pressure .....(A) 2364 P.S.I.

Initial Flow Period .....Minutes 30 (B) 83 P.S.I. to

(C) 179 P.S.I.

Initial Closed In Period .....Minutes 60 (D) 1275 P.S.I.

Final Flow Period .....Minutes 90 (E) 32 P.S.I. to

(F) 42 P.S.I.

Final Closed In Period .....Minutes 90 (G) 1356 P.S.I.

Final Hydrostatic Pressure .....(H) 2320 P.S.I.

# RICKETTS TESTING, INC.

## Pressure Data

Date 11-9-02 Test Ticket No. 2070  
 Recorder No. 13306 Capacity 4625 Location 4610 Ft.  
 Clock No. \_\_\_\_\_ Elevation 2185 K.B. Well Temperature 148 °F

Point	Pressure		Time Given	Time Computed
A Initial Hydrostatic Mud	<u>2364</u> P.S.I.	Open Tool	<u>5:30</u> P.M.	
B First Initial Flow Pressure	<u>83</u> P.S.I.	First Flow Pressure	<u>30</u> Mins.	<u>30</u> Mins.
C First Final Flow Pressure	<u>179</u> P.S.I.	Initial Closed-in Pressure	<u>60</u> Mins.	<u>63</u> Mins.
D Initial Closed-in Pressure	<u>1275</u> P.S.I.	Second Flow Pressure	<u>90</u> Mins.	<u>90</u> Mins.
E Second Initial Flow Pressure	<u>32</u> P.S.I.	Final Closed-in Pressure	<u>90</u> Mins.	<u>90</u> Mins.
F Second Final Flow Pressure	<u>42</u> P.S.I.			
G Final Closed-in Pressure	<u>1356</u> P.S.I.			
H Final Hydrostatic Mud	<u>2320</u> P.S.I.			

## PRESSURE BREAKDOWN

Point Mins.	First Flow Pressure	Initial Shut-In	Second Flow Pressure	Final Shut-In
	Breakdown: <u>6</u> Inc. of <u>5</u> mins. and a final inc. of _____ Min.	Breakdown: <u>21</u> Inc. of <u>3</u> mins. and a final inc. of _____ Min.	Breakdown: <u>18</u> Inc. of <u>5</u> mins. and a final inc. of _____ Min.	Breakdown: <u>30</u> Inc. of <u>3</u> mins. and a final inc. of _____ Min.
	Press.	Point Minutes	Press.	Point Minutes
P 1	<u>83</u>	<u>0</u>	<u>179</u>	<u>42</u>
P 2	<u>75</u>	<u>3</u>	<u>279</u>	<u>211</u>
P 3	<u>86</u>	<u>6</u>	<u>380</u>	<u>397</u>
P 4	<u>113</u>	<u>9</u>	<u>492</u>	<u>457</u>
P 5	<u>159</u>	<u>12</u>	<u>590</u>	<u>715</u>
P 6	<u>154</u>	<u>15</u>	<u>688</u>	<u>830</u>
P 7	<u>179</u>	<u>18</u>	<u>774</u>	<u>936</u>
P 8		<u>21</u>	<u>848</u>	<u>1014</u>
P 9		<u>24</u>	<u>916</u>	<u>1083</u>
P10		<u>27</u>	<u>975</u>	<u>1135</u>
P11		<u>30</u>	<u>1019</u>	<u>1178</u>
P12		<u>33</u>	<u>1076</u>	<u>1214</u>
P13		<u>36</u>	<u>1108</u>	<u>1244</u>
P14		<u>39</u>	<u>1142</u>	<u>1264</u>
P15		<u>42</u>	<u>1167</u>	<u>1282</u>
P16		<u>45</u>	<u>1192</u>	<u>1297</u>
P17		<u>48</u>	<u>1213</u>	<u>1309</u>
P18		<u>51</u>	<u>1225</u>	<u>1318</u>
P19		<u>54</u>	<u>1244</u>	<u>1324</u>
P20		<u>57</u>	<u>1255</u>	<u>1331</u>
		<u>60</u>	<u>1270</u>	<u>1336</u>
		<u>63</u>	<u>1275</u>	<u>CONT'D</u>



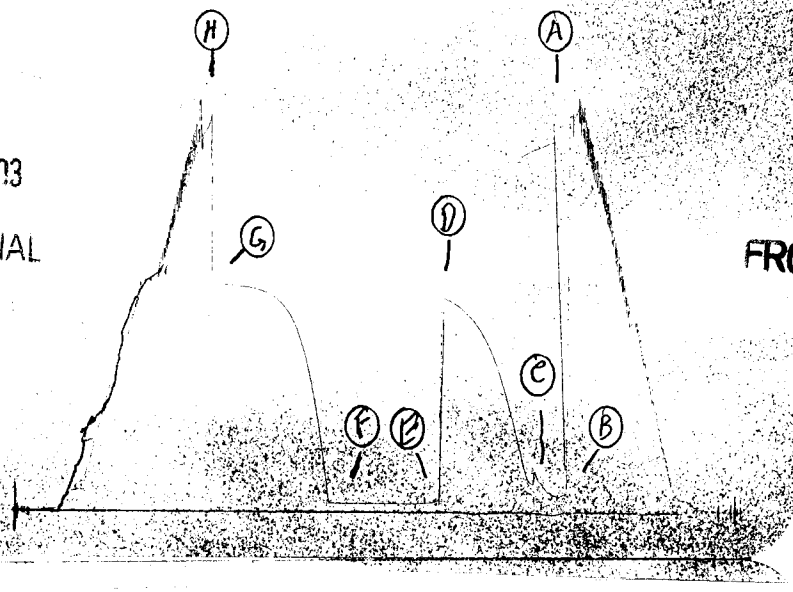
D.S.T. # 5 TK# 2070

CONFIDENTIAL

ORIGINAL

KCC  
 JAN 21 2003  
 CONFIDENTIAL

RELEASED  
 MAR 15 2004  
 FROM CONFIDENTIAL

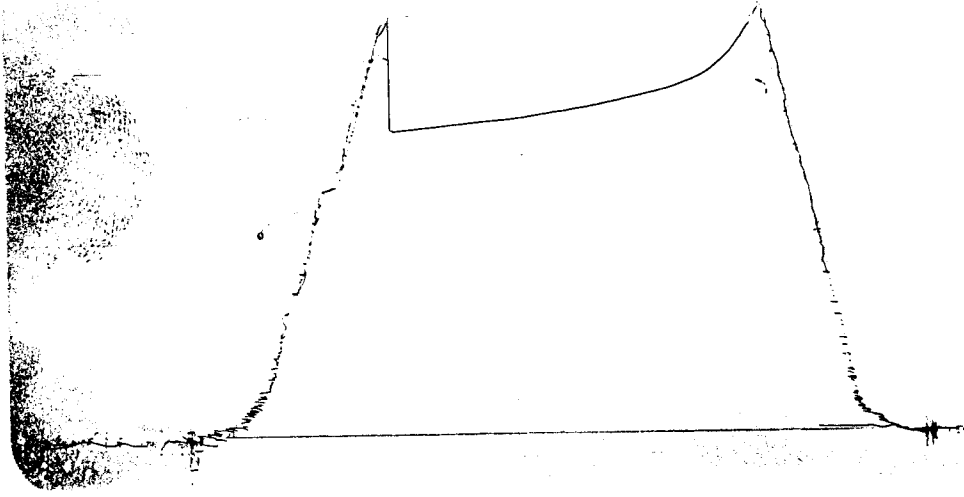


This is an actual photograph of recorder chart.

POINT	PRESSURE		
	Field Reading	Office Reading	
(A) Initial Hydrostatic Mud	2367	2364	PSI
(B) First Initial Flow Pressure	58	83	PSI
(C) First Final Flow Pressure	119	179	PSI
(D) Initial Closed-in Pressure	1282	1275	PSI
(E) Second Initial Flow Pressure	41	32	PSI
(F) Second Final Flow Pressure	41	42	PSI
(G) Final Closed-in Pressure	1372	1356	PSI
(H) Final Hydrostatic Mud	2319	2320	PSI

COMPANY PICKRELL DRILLING CO., INC. LEASE AND WELL NO. BURTON "C" #1 SEC. 33 TWP. 26S RGE. 18W TEST NO. 5 DATE 11-9-02

D.S. T #5 TK# 2070  
 Below STRADDLE



**RELEASED**  
 MAR 15 2004  
 JM CONFIDENTIAL

This is an actual photograph of recorder chart.

POINT	PRESSURE		PSI
	Field Reading	Office Reading	
(A) Initial Hydrostatic Mud	2367	2364	PSI
(B) First Initial Flow Pressure	58	83	PSI
(C) First Final Flow Pressure	119	179	PSI
(D) Initial Closed-in Pressure	1282	1275	PSI
(E) Second Initial Flow Pressure	41	32	PSI
(F) Second Final Flow Pressure	41	42	PSI
(G) Final Closed-in Pressure	1372	1356	PSI
(H) Final Hydrostatic Mud	2319	2320	PSI

COMPANY  
 LOGS  
 DATE