



DIAMOND TESTING

P.O. Box 157
HOISINGTON, KANSAS 67544
(820) 653-7550 • (800) 542-7313

RECEIVED

JUL 25 2003

KCC WICHITA

Page 1 of 2 Pages

CONFIDENTIAL

Company Ritchie Exploration, Inc. Lease & Well No. Wetzel No. 1

Elevation 2255 KB Formation Lansing Effective Pay -- Ft. Ticket No. J1373

Date 6-18-03 Sec. 6 Twp. 26S Range 20W County Edwards State Kansas

Test Approved By Gary F. Gensch Diamond Representative John C. Riedl

Formation Test No. 1 Interval Tested from 4,104 ft. to 4,163 ft. Total Depth 4,163 ft.

Packer Depth 4,099 ft. Size 6 3/4 in. KCC Packer Depth -- ft. Size -- in.

Packer Depth 4,104 ft. Size 6 3/4 in. Packer Depth -- ft. Size -- in.

Depth of Selective Zone Set ft.

Top Recorder Depth (Inside) 4,107 ft. Recorder Number Elec. Cap. 5,000 psi

Bottom Recorder Depth (Outside) 4,160 ft. Recorder Number 13556 Cap. 5,475 psi

Below Straddle Recorder Depth ft. Recorder Number Cap. psi

Drilling Contractor Duke Drilling Co., Inc. - Rig 1 Drill Collar Length -- ft. I.D. -- in.

Mud Type Chemical Viscosity 45 Weight Pipe Length -- ft. I.D. -- in.

Weight 8.9 Water Loss 12.8 cc. Drill Pipe Length 4,082 ft. I.D. 2 3/4 in.

Chlorides 9,000 P.P.M. Test Tool Length 22 ft. Tool Size 3 1/2 - IF in.

Jars: Make Bowen Serial Number Not Run Anchor Length 59 ft. Size 4 1/2 - FH in.

Did Well Flow? No Reversed Out No Surface Choke Size 1 in. Bottom Choke Size 5/8 in.

Main Hole Size 7 7/8 in. Tool Joint Size 4 1/2 - XH in.

Blow: 1st Open: Strong blow. Slowly building off bottom of bucket in 28 mins. Very weak blow back during shut-in.

2nd Open: Strong blow. Slowly building off bottom of bucket in 29 mins. Very weak blow back during shut-in.

Recovered 180 ft. of gas in pipe

Recovered 60 ft. of slightly oil cut gassy watery mud = .438000 bbls. (Grind out: 3%-oil; 12%-gas; 15%-water; 70%-mud)

Recovered 120 ft. of slightly gas cut muddy water with a scum of oil = .876000 bbls. (Grind out: 5%-gas; 40%-mud; 55%-water)

Recovered 180 ft. of TOTAL FLUID = 1.314000 bbls. Chlorides: 42,000 Ppm

Recovered ft. of

Remarks

Time Set Packer(s) 7:45 A.M. Time Started Off Bottom 10:45 A.M. Maximum Temperature 112°

Initial Hydrostatic Pressure (A) 1986 P.S.I.

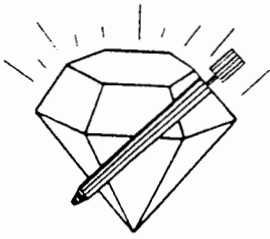
Initial Flow Period Minutes 30 (B) 14 P.S.I. to (C) 52 P.S.I.

Initial Closed In Period Minutes 45 (D) 1293 P.S.I.

Final Flow Period Minutes 45 (E) 55 P.S.I. to (F) 100 P.S.I.

Final Closed In Period Minutes 60 (G) 1285 P.S.I.

Final Hydrostatic Pressure (H) 1921 P.S.I.



DIAMOND TESTING
P.O. Box 157
HOISINGTON, KANSAS 67544
(620) 653-7550 • (800) 542-7313

FLUID SAMPLE DATA

Company Ritchie Exploration, Inc.
Lease & Well No. Wetzel No. 1
Date 6-18-03 Sec. 6 Twp. 26 S Range 20 W
Formation Test No. 1 Interval Tested From 4,104 ft. to 4,163 ft. Total Depth 4,163 ft.
Formation Lansing

	<u>MUD PIT</u>	<u>WATER RECOVERY</u>
Viscosity	<u>45</u> CP	<u>--</u> CP
Weight	<u>8.9</u>	<u>--</u>
Water Loss	<u>12.8</u> CC	<u>25+</u> CC
PH Factor	<u>9.5</u>	<u>8.0</u>

	<u>RESISTIVITY</u>	<u>CHLORIDE CONTENT</u>
Recovery Water	<u>.17</u> @ <u>72</u> °F.	<u>40,000</u> ppm
Recovery Mud	<u>.72</u> @ <u>70</u> °F.	<u>11,000</u> ppm
Recovery Mud Filtrate	<u>.20</u> @ <u>65</u> °F.	<u>36,000</u> ppm
Mud Pit Sample	<u>.70</u> @ <u>70</u> °F.	<u>9,000</u> ppm
Mud Pit Sample Filtrate	<u>.55</u> @ <u>72</u> °F.	<u>11,000</u> ppm

Sample Taken By JOHN C. RIEDL

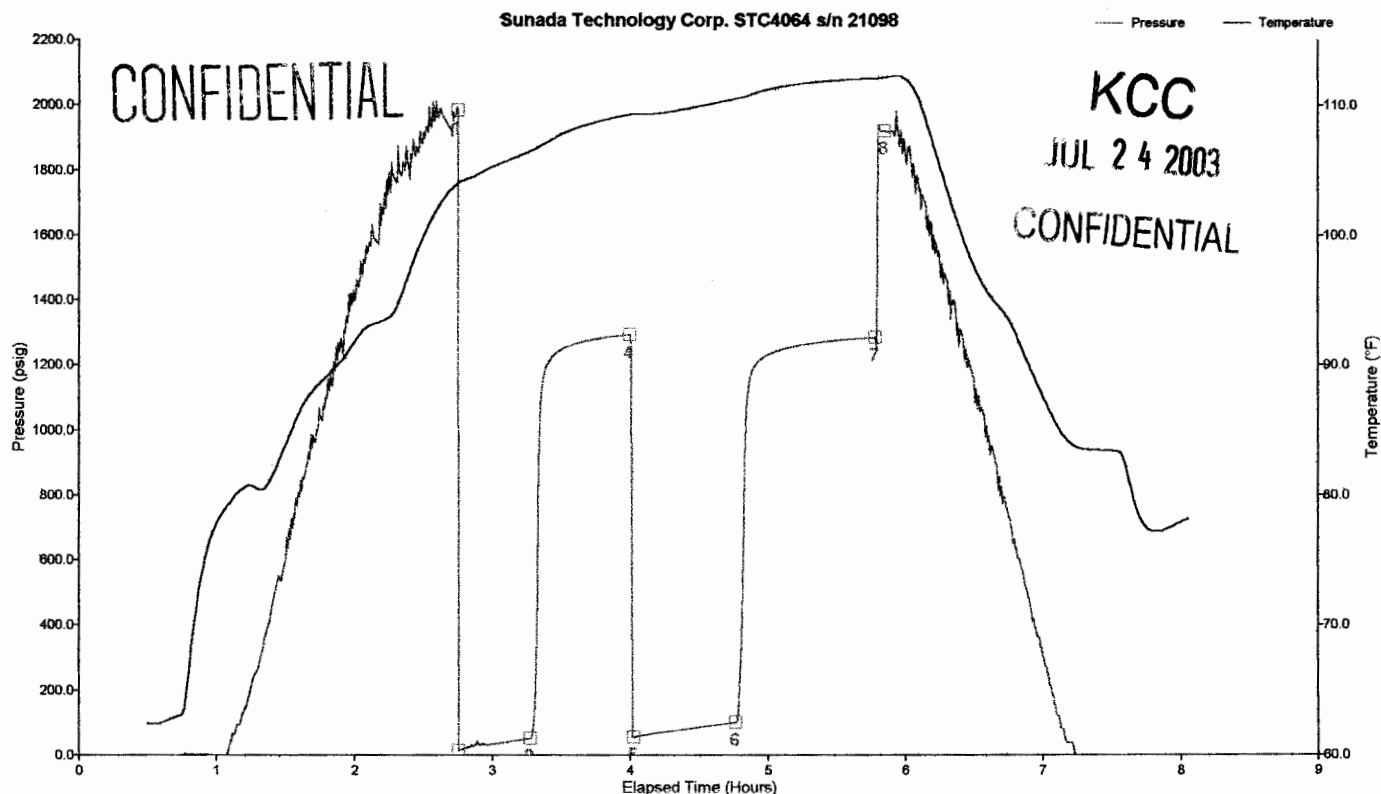
Witness By Gary F. Gensch

Remarks Pit filtrate triton dish chlorides were 9,000 Ppm.
Recovery filtrate triton dish chlorides were 38,000 Ppm.
Recovery water dish chlorides were 42,000 Ppm.

Well LSD: DST 1 LANSING 4104-4163
 Well Name: WETZEL 1
 Company: RITCHIE EXPLORATION INC
 Battery on: Jun 18, 2003 at 05:00:00
 Notes: REC. 180' GIP 60' SLOGGWM 60' SLGCMW CHLORIDES 42,000Ppm

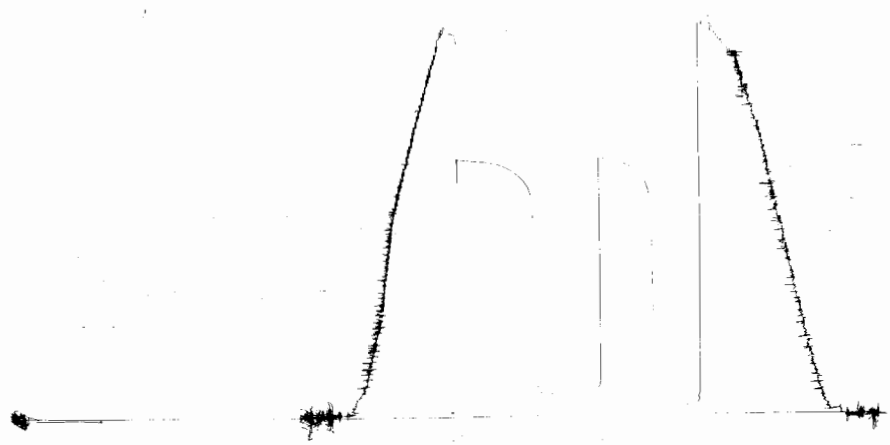
ORIGINAL

Sunada Technology Corp. STC4064 s/n 21098



Tag	Pressure	Temperature	Comment
1	1985.71 psig	104.01 °F	2003-06-18 07:45:00
2	13.83 psig	104.09 °F	2003-06-18 07:45:30
3	51.65 psig	106.50 °F	2003-06-18 08:16:30
4	1292.71 psig	109.30 °F	2003-06-18 09:00:00
5	54.54 psig	109.32 °F	2003-06-18 09:01:30
6	99.99 psig	110.52 °F	2003-06-18 09:46:00
7	1284.99 psig	112.11 °F	2003-06-18 10:47:00
8	1920.87 psig	112.19 °F	2003-06-18 10:51:00

ROC# 13536 0055M DST#1 CLOCK# 2025,
 102160 1057206 #1



This is an actual photograph of recorder chart.

POINT	PRESSURE		PSI
	Field Reading	Elec. Office Reading	
(A) Initial Hydrostatic Mud	1986	1986	PSI
(B) First Initial Flow Pressure.....	14	14	PSI
(C) First Final Flow Pressure	52	52	PSI
(D) Initial Closed-in Pressure	1293	1293	PSI
(E) Second Initial Flow Pressure.....	55	55	PSI
(F) Second Final Flow Pressure.....	100	100	PSI
(G) Final Closed-in Pressure.....	1285	1285	PSI
(H) Final Hydrostatic Mud.....	1921	1921	PSI



DIAMOND TESTING

P.O. Box 157

HOISINGTON, KANSAS 67544

(320) 653-7550 • (800) 542-7313

RECEIVED
JUL 25 2003

KCC WICHITA ORIGINAL

CONFIDENTIAL

Company Ritchie Exploration, Inc. Lease & Well No. Wetzel No. 1

Elevation 2255 KB Formation Cherokee Effective Pay Ft. Ticket No. J1374

Date 6-20-03 Sec. 6 Twp. 26S Range 20W County Edwards State Kansas

Test Approved By Gary F. Gensch Diamond Representative John C. Riedl

Formation Test No. 2 Interval Tested from 4,630 ft. to 4,705 ft. Total Depth 4,705 ft.

Packer Depth 4,625 ft. Size 6 3/4 in. Packer Depth ft. Size in.

Packer Depth 4,630 ft. Size 6 3/4 in. Packer Depth ft. Size in.

Depth of Selective Zone Set ft.

Top Recorder Depth (Inside) 4,637 ft. Recorder Number Elec. Cap. 5,000 psi

Bottom Recorder Depth (Outside) 4,702 ft. Recorder Number 13556 Cap. 5,475 psi

Below Straddle Recorder Depth ft. Recorder Number Cap. psi

Drilling Contractor Duke Drilling Co., Inc. - Rig 1 Drill Collar Length ft. I.D. in.

Mud Type Chemical Viscosity 49 Weight Pipe Length ft. I.D. in.

Weight 9.4 Water Loss 12.0 cc. Drill Pipe Length 4,608 ft. I.D. 2 3/4 in.

Chlorides 5,000 P.P.M. Test Tool Length 22 ft. Tool Size 3 1/2 - IF in.

Jars: Make Bowen Serial Number Not Run Anchor Length 75 ft. Size 4 1/2 - FH in.

Did Well Flow? No Reversed Out No Surface Choke Size 1 in. Bottom Choke Size 5/8 in.

Main Hole Size 7 7/8 in. Tool Joint Size 4 1/2 - XH in.

Blow: 1st Open: Weak blow. Dead in 10 mins.

2nd Open: Weak blow. Dead in 6 mins.

Recovered 20 ft. of drilling mud with oil specks in tool = .146000 bbls. (Grind out: 2%-water; 98%-mud)

Recovered ft. of

Recovered ft. of

Recovered ft. of

Recovered ft. of

Remarks

Time Set Packer(s) 1:03 ~~P.M.~~ ^{A.M.} Time Started Off Bottom 3:03 ~~P.M.~~ ^{A.M.} Maximum Temperature 112°

Initial Hydrostatic Pressure (A) 2210 P.S.I.

Initial Flow Period Minutes 30 (B) 17 P.S.I. to (C) 20 P.S.I.

Initial Closed In Period Minutes 30 (D) 41 P.S.I.

Final Flow Period Minutes 30 (E) 18 P.S.I. to (F) 19 P.S.I.

Final Closed In Period Minutes 30 (G) 35 P.S.I.

Final Hydrostatic Pressure (H) 2204 P.S.I.



DIAMOND TESTING
 P.O. Box 157
HOISINGTON, KANSAS 67544
 (620) 653-7550 • (800) 542-7313

FLUID SAMPLE DATA

Company Ritchie Exploration, Inc.
 Lease & Well No. Wetzel No. 1
 Date 6-20-03 Sec. 6 Twp. 26 S Range 20 W
 Formation Test No. 2 Interval Tested From 4,630 ft. to 4,705 ft. Total Depth 4,705 ft.
 Formation Cherokee

	<u>MUD PIT</u>	<u>RECOVERY</u>
Viscosity	<u>49</u> CP	<u>42</u> CP
Weight	<u>9.4</u>	<u>9.2</u>
Water Loss	<u>12.0</u> CC	<u>10.0</u> CC
PH Factor	<u>10.0</u>	<u>10.0</u>

	<u>RESISTIVITY</u>	<u>CHLORIDE CONTENT</u>
Recovery Water	<u>--</u> @ <u>--</u> °F.	<u>--</u> ppm
Recovery Mud	<u>1.40</u> @ <u>65</u> °F.	<u>5,500</u> ppm
Recovery Mud Filtrate	<u>1.00</u> @ <u>68</u> °F.	<u>6,500</u> ppm
Mud Pit Sample	<u>1.00</u> @ <u>70</u> °F.	<u>6,000</u> ppm
Mud Pit Sample Filtrate	<u>.82</u> @ <u>72</u> °F.	<u>7,000</u> ppm

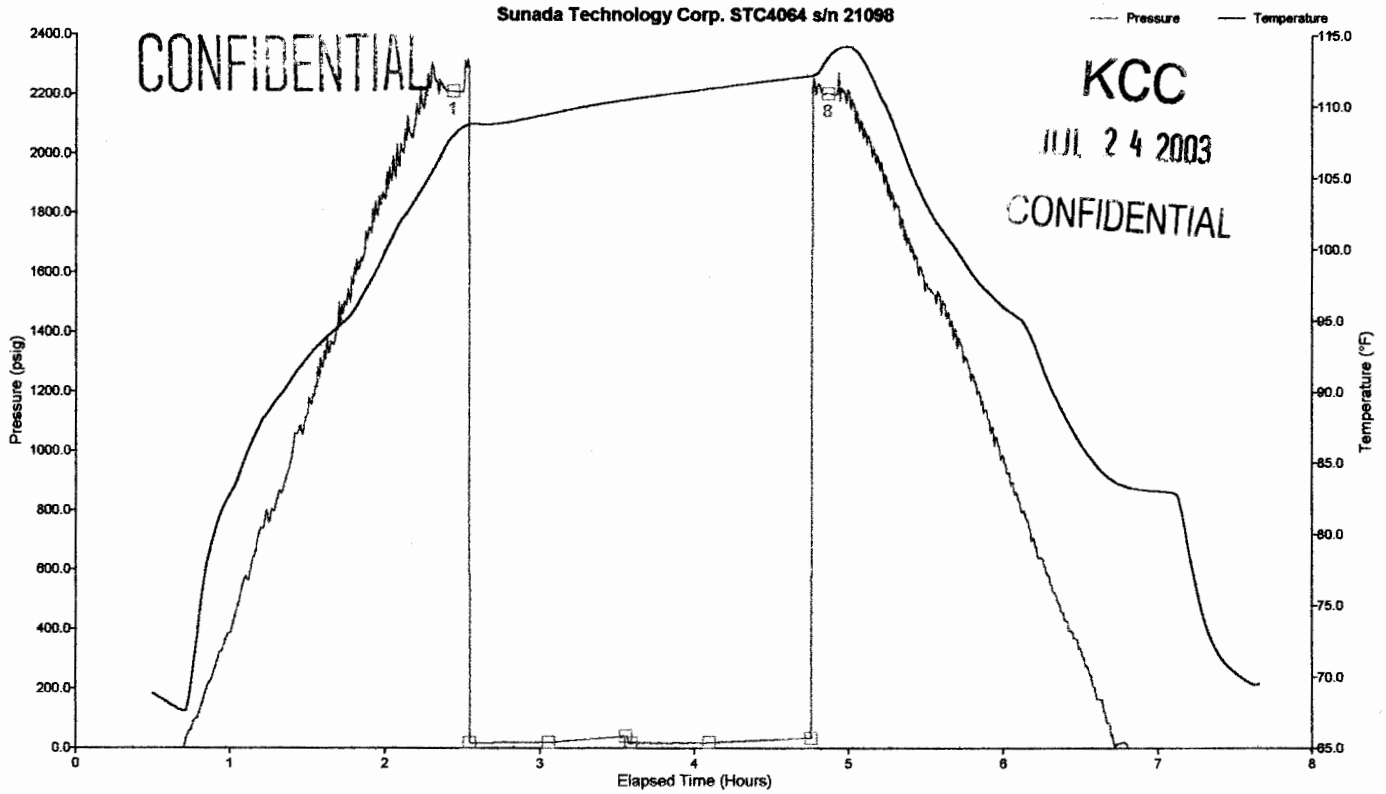
Sample Taken By JOHN C. RIEDL

Witness By Gary F. Gensch

Remarks Pit filtrate triton dish chlorides were 5,000 Ppm.
Recovery filtrate triton dish chlorides were 5,000 Ppm.

Well LSD: DST 2 CHEROKEE 4630-4705
 Well Name: WETZEL 1
 Company: RITCHIE EXPLORATION INC
 Battery on: Jun 20, 2003 at 23:30:00
 Notes: REC. 20' DRILLING MUD OIL SPECKS IN TOOL

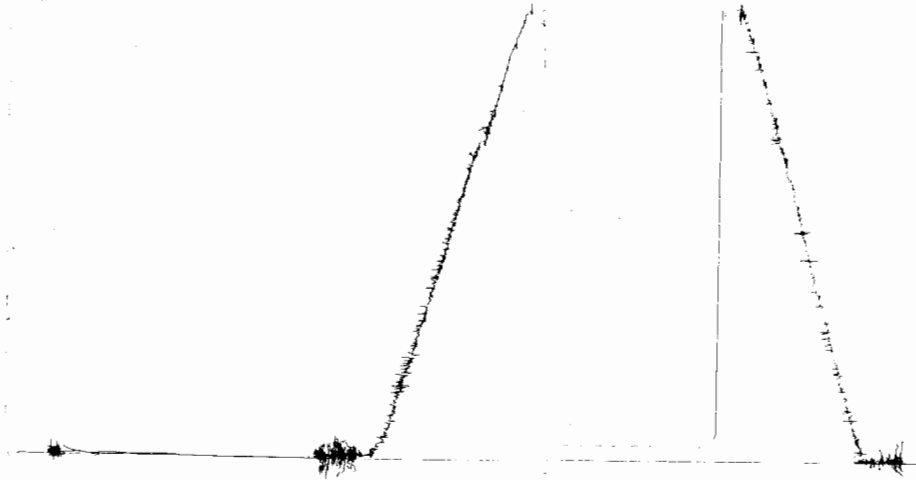
ORIGINAL



Tag	Pressure	Temperature	Comment
1	2210.08 psig	108.02 °F	2003-06-21 01:56:30
2	16.53 psig	108.77 °F	2003-06-21 02:03:00
3	19.94 psig	109.49 °F	2003-06-21 02:33:30
4	41.14 psig	110.47 °F	2003-06-21 03:03:30
5	18.07 psig	110.52 °F	2003-06-21 03:05:30
6	18.98 psig	111.28 °F	2003-06-21 03:36:00
7	34.84 psig	112.18 °F	2003-06-21 04:15:30
8	2204.05 psig	113.54 °F	2003-06-21 04:22:00

ROE# 3556 OOST# 2 DSF# 2
 LOC 4202' WBTOL #

CLOCK # 26705



This is an actual photograph of recorder chart.

POINT	PRESSURE		PSI
	Field Reading	Elec. Office Reading	
(A) Initial Hydrostatic Mud	2210	2210	PSI
(B) First Initial Flow Pressure.....	17	17	PSI
(C) First Final Flow Pressure	20	20	PSI
(D) Initial Closed-in Pressure	41	41	PSI
(E) Second Initial Flow Pressure.....	18	18	PSI
(F) Second Final Flow Pressure.....	19	19	PSI
(G) Final Closed-in Pressure.....	35	35	PSI
(H) Final Hydrostatic Mud.....	2204	2204	PSI



DIAMOND TESTING

P.O. Box 157

HOISINGTON, KANSAS 67544

(405) 653-7550 • (800) 542-7313

JUL 25 2003
KCC WICHITA

ORIGINAL

Page 1 of 2 Pages

Company Ritchie Exploration, Inc. Lease & Well No. Wetzel No. 1
Elevation 2255 KB Formation Mississippi Effective Pay -- Ft. Ticket No. J1375
Date 6-20-03 Sec. 6 Twp. 26S Range 20W County Edwards State Kansas
Test Approved By Gary F. Gensch Diamond Representative John C. Riedl

Formation Test No. 3 Interval Tested from 4,698 ft. to 4,740 ft. Total Depth 4,740 ft.

Packer Depth 4,693 ft. Size 6 3/4 in. Packer Depth -- ft. Size -- in.

Packer Depth 4,698 ft. Size 6 3/4 in. Depth -- ft. Size -- in.

Depth of Selective Zone Set -- ft.

Top Recorder Depth (Inside) 4,703 ft. Recorder Number Elec. Cap. 5,000 psi

Bottom Recorder Depth (Outside) 4,737 ft. Recorder Number 13556 Cap. 5,475 psi

Below Straddle Recorder Depth -- ft. Recorder Number -- Cap. -- psi

Drilling Contractor Duke Drilling Co., Inc. - Rig 1 Drill Collar Length -- ft. I.D. -- in.

Mud Type Chemical Viscosity 43 Weight Pipe Length -- ft. I.D. -- in.

Weight 9.0 Water Loss 12.0 cc. Drill Pipe Length 4,676 ft. I.D. 2 3/4 in.

Chlorides 5,000 P.P.M. Test Tool Length 22 ft. Tool Size 3 1/2 - IF in.

Jars: Make Bowen Serial Number Not Run Anchor Length 42 ft. Size 4 1/2 - FH in.

Did Well Flow? No Reversed Out No Surface Choke Size 1 in. Bottom Choke Size 5/8 in.

Main Hole Size 7 7/8 in. Tool Joint Size 4 1/2 - XH in.

Blow: 1st Open: Very weak blow throughout.

2nd Open: Surface blow throughout.

Recovered 30 ft. of gas & oil cut mud = .219000 bbls. (Grind out: 5%-gas; 8%-oil; 87%-mud)

Recovered -- ft. of --

Recovered -- ft. of --

Recovered -- ft. of --

Recovered -- ft. of --

Remarks --

Time Set Packer(s) 4:50 ~~XXM.~~ P.M. Time Started Off Bottom 6:50 ~~XXM.~~ P.M. Maximum Temperature 113°

Initial Hydrostatic Pressure (A) 2221 P.S.I.

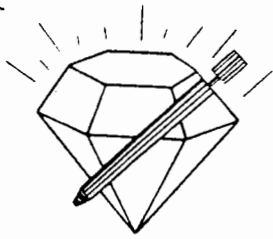
Initial Flow Period Minutes 30 (B) 17 P.S.I. to (C) 21 P.S.I.

Initial Closed In Period Minutes 30 (D) 1017 P.S.I.

Final Flow Period Minutes 30 (E) 23 P.S.I. to (F) 26 P.S.I.

Final Closed In Period Minutes 30 (G) 886 P.S.I.

Final Hydrostatic Pressure (H) 2181 P.S.I.



DIAMOND TESTING
P.O. Box 157
HOISINGTON, KANSAS 67544
(620) 653-7550 • (800) 542-7313

FLUID SAMPLE DATA

Company Ritchie Exploration, Inc.

Lease & Well No. Wetzel No. 1

Date 6-20-03 Sec. 6 Twp. 26 S Range 20 W

Formation Test No. 3 Interval Tested From 4,698 ft. to 4,740 ft. Total Depth 4,740 ft.

Formation Mississippi

	<u>MUD PIT</u>	<u>RECOVERY</u>
Viscosity	<u>43</u> CP	<u>40</u> CP
Weight	<u>9.0</u>	<u>8.9</u>
Water Loss	<u>12.0</u> CC	<u>11.0</u> CC
PH Factor	<u>10.0</u>	<u>10.0</u>

	RESISTIVITY	CHLORIDE CONTENT
Recovery Water	<u>--</u> @ <u>--</u> °F.	<u>--</u> ppm
Recovery Mud	<u>1.20</u> @ <u>70</u> °F.	<u>5,200</u> ppm
Recovery Mud Filtrate	<u>1.10</u> @ <u>72</u> °F.	<u>5,400</u> ppm
Mud Pit Sample	<u>1.40</u> @ <u>65</u> °F.	<u>5,500</u> ppm
Mud Pit Sample Filtrate	<u>1.10</u> @ <u>68</u> °F.	<u>5,200</u> ppm

Sample Taken By JOHN C. RIEDL

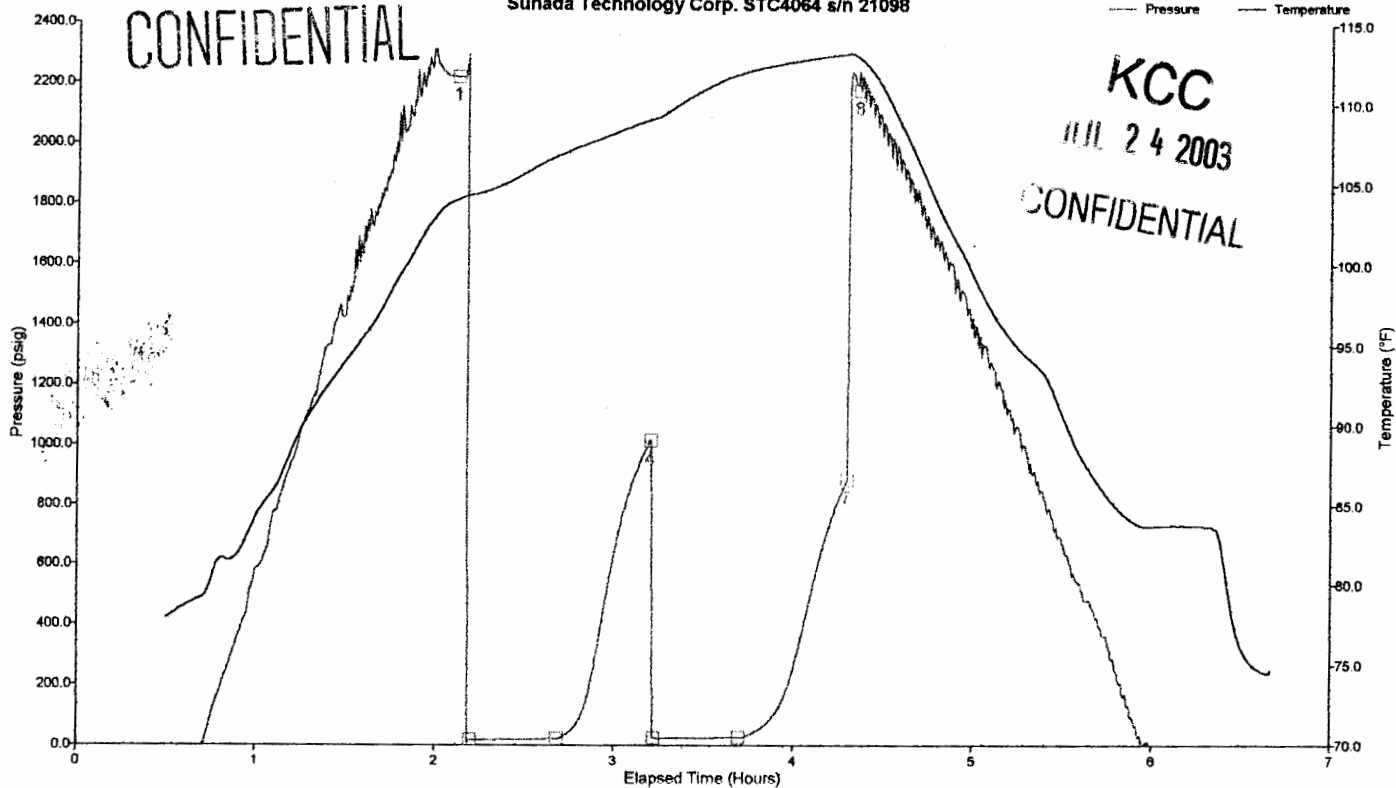
Witness By Gary F. Gensch

Remarks Pit filtrate triton dish chlorides were 5,000 Ppm.
Recovery filtrate triton dish chlorides were 5,000 Ppm.

Well LSD: DST 3 MISS 4698-4740
 Well Name: WETZEL 1
 Company: RITCHIE EXPLORATION INC
 Battery on: Jun 20, 2003 at 14:40:00
 Notes: REC. 30' SLO+GCM [8% OIL 5% GAS 87% MUD]

ORIGINAL

Sunada Technology Corp. STC4064 s/n 21098

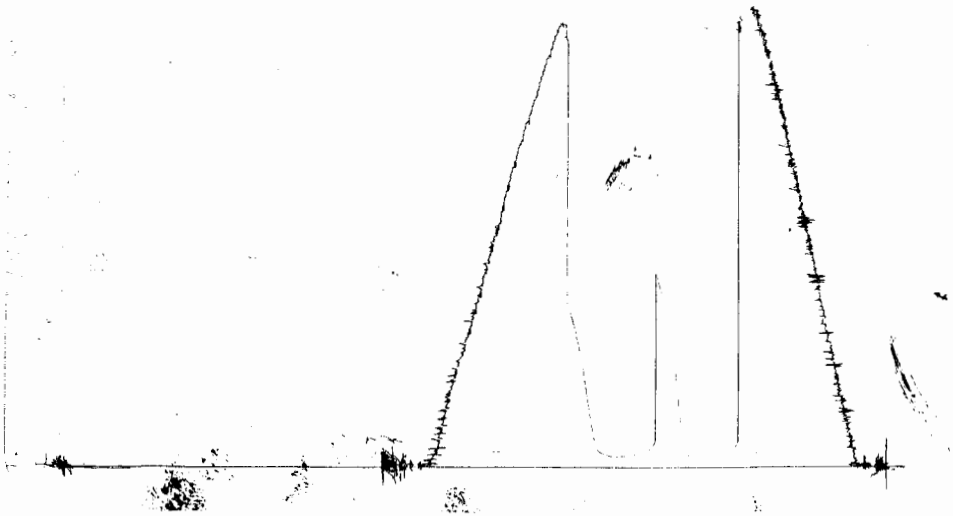


Tag	Pressure	Temperature	Comment
1	2221.50 psig	104.06 °F	2003-06-20 16:47:30
2	17.25 psig	104.33 °F	2003-06-20 16:52:00
3	21.25 psig	106.82 °F	2003-06-20 17:21:00
4	1016.86 psig	109.08 °F	2003-06-20 17:52:30
5	22.97 psig	109.14 °F	2003-06-20 17:53:30
6	26.35 psig	111.93 °F	2003-06-20 18:22:00
7	885.51 psig	113.19 °F	2003-06-20 18:58:00
8	2180.85 psig	112.87 °F	2003-06-20 19:02:00

REC'D 13386 045105
4737

DST #3
WBZLGA

CLOCK #26705



This is an actual photograph of recorder chart.

POINT	PRESSURE		PSI
	Field Reading	Elec. Office Reading	
(A) Initial Hydrostatic Mud	2221	2222	PSI
(B) First Initial Flow Pressure.....	17	17	PSI
(C) First Final Flow Pressure	21	21	PSI
(D) Initial Closed-in Pressure	1017	1017	PSI
(E) Second Initial Flow Pressure	23	23	PSI
(F) Second Final Flow Pressure.....	26	26	PSI
(G) Final Closed-in Pressure.....	886	886	PSI
(H) Final Hydrostatic Mud	2181	2181	PSI



DIAMOND TESTING

P.O. Box 157

HOISINGTON, KANSAS 67544

(620) 653-7550 • (800) 542-7313

RECEIVED

JUL 25 2003

KCC WICHITA ORIGINAL

CONFIDENTIAL

Company Ritchie Exploration, Inc. Lease & Well No. Wetzal No. 1

Elevation 2255 KB Formation Mississippi Effective Pay -- Ft. Ticket No. J1376

Date 6-21-03 Sec. 6 Twp. 26S Range 20W County Edwards State Kansas

Test Approved By Gary F. Gensch Diamond Representative John C. Riedl

Formation Test No. 4 Interval Tested from 4,699 ft. to 4,748 ft. Total Depth 4,748 ft.

Packer Depth 4,694 ft. Size 6 3/4 in. Packer Depth -- ft. Size -- in.

Packer Depth 4,699 ft. Size 6 3/4 in. Packer Depth -- ft. Size -- in.

Depth of Selective Zone Set ft.

Top Recorder Depth (Inside) 4,704 ft. Recorder Number Elec. Cap. 5,000 psi

Bottom Recorder Depth (Outside) 4,745 ft. Recorder Number 13556 Cap. 5,475 psi

Below Straddle Recorder Depth ft. Recorder Number Cap. psi

Drilling Contractor Duke Drilling Co., Inc. - Rig 1 Drill Collar Length -- ft. I.D. -- in.

Mud Type Chemical Viscosity 48 Weight Pipe Length -- ft. I.D. -- in.

Weight 9.2 Water Loss 9.6 cc. Drill Pipe Length 4,677 ft. I.D. 2 3/4 in.

Chlorides 5,500 P.P.M. Test Tool Length 22 ft. Tool Size 3 1/2 - IF in.

Jars: Make Bowen Serial Number Not Run Anchor Length 49 ft. Size 4 1/2 - FH in.

Did Well Flow? No Reversed Out No Surface Choke Size 1 in. Bottom Choke Size 5/8 in.

Main Hole Size 7 7/8 in. Tool Joint Size 4 1/2 - XH in.

Blow: 1st Open: Good blow. Slowly building throughout to 7 ins. at end. Very weak blow back during shut-in.

2nd Open: Good blow. Slowly building throughout to 9 ins. at end. Very weak blow back during shut-in.

Recovered 45 ft. of very slightly oil cut watery mud = .328500 bbls. (Grind out: 1%-oil; 15%-water; 84%-mud)

Recovered 185 ft. of muddy water = 1.350500 bbls. (Grind out: 12%-mud; 88%-water) Chlorides: 24,000 Ppm

Recovered 230 ft. of TOTAL FLUID = 1.679000 bbls.

Recovered ft. of

Recovered ft. of

Remarks

Time Set Packer(s) 8:48 A.M. Time Started Off Bottom 11:48 A.M. Maximum Temperature 118°

Initial Hydrostatic Pressure (A) 2240 P.S.I.

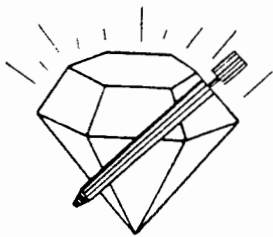
Initial Flow Period Minutes 30 (B) 21 P.S.I. to (C) 63 P.S.I.

Initial Closed In Period Minutes 45 (D) 1443 P.S.I.

Final Flow Period Minutes 45 (E) 66 P.S.I. to (F) 124 P.S.I.

Final Closed In Period Minutes 60 (G) 1428 P.S.I.

Final Hydrostatic Pressure (H) 2186 P.S.I.



DIAMOND TESTING
P.O. Box 157
HOISINGTON, KANSAS 67544
(620) 653-7550 • (800) 542-7313

FLUID SAMPLE DATA

Company Ritchie Exploration, Inc.

Lease & Well No. Wetzel No. 1

Date 6-21-03 Sec. 6 Twp. 26 S Range 20 W

Formation Test No. 4 Interval Tested From 4,699 ft. to 4,748 ft. Total Depth 4,748 ft.

Formation Mississippi

	<u>MUD PIT</u>	<u>RECOVERY</u>	
Viscosity	<u>48</u> CP	<u>--</u> CP	
Weight	<u>9.2</u>	<u>--</u>	
Water Loss	<u>9.6</u> CC	<u>--</u> CC	
PH Factor	<u>10.0</u>	<u>--</u>	<u>Water</u> <u>8.5</u>

	<u>RESISTIVITY</u>	<u>CHLORIDE</u> <u>CONTENT</u>
Recovery Water	<u>.25</u> @ <u>75</u> °F.	<u>25,000</u> ppm
Recovery Mud	<u>--</u> @ <u>--</u> °F.	<u>--</u> ppm
Recovery Mud Filtrate	<u>--</u> @ <u>--</u> °F.	<u>--</u> ppm
Mud Pit Sample	<u>1.40</u> @ <u>62</u> °F.	<u>6,000</u> ppm
Mud Pit Sample Filtrate	<u>1.40</u> @ <u>64</u> °F.	<u>5,800</u> ppm

Sample Taken By JOHN C. RIEDL

Witness By Gary F. Gensch

Remarks Pit filtrate triton dish chlorides were 5,500 Ppm.
Recovery water dish chlorides were 24,000 Ppm.

Well LSD: dst 4 miss 4699-4748

Well Name: WETZEL 1

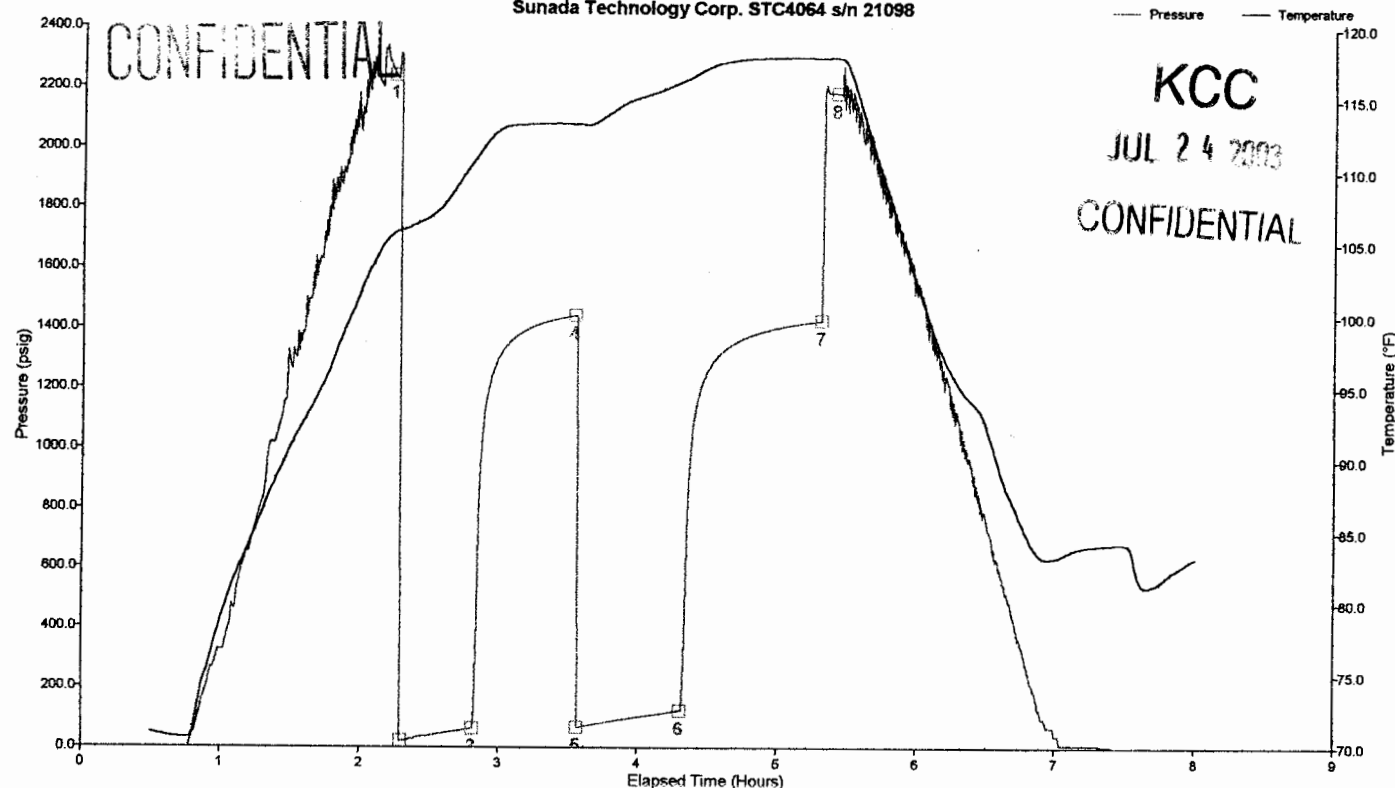
Company: RITCHIE EXPLORATION INC

Battery on: Jun 21, 2003 at 06:30:00

Notes: REC. 45' VSLOCWM 185' MW CHLORIDES 24,000 ppm

ORIGINAL

Sunada Technology Corp. STC4064 s/n 21098



Tag	Pressure	Temperature	Comment
1	2239.97 psig	105.76 °F	2003-06-21 08:44:30
2	21.44 psig	105.97 °F	2003-06-21 08:48:00
3	63.15 psig	110.91 °F	2003-06-21 09:19:00
4	1443.00 psig	113.33 °F	2003-06-21 10:02:30
5	66.10 psig	113.34 °F	2003-06-21 10:04:00
6	123.59 psig	116.37 °F	2003-06-21 10:48:30
7	1428.00 psig	117.98 °F	2003-06-21 11:49:00
8	2185.63 psig	118.01 °F	2003-06-21 11:55:00

POINT	Field Reading	Elec. Office Reading	PSI
(A) Initial Hydrostatic Mud	2240	2240	PSI
(B) First Initial Flow Pressure	21	21	PSI
(C) First Final Flow Pressure	63	63	PSI
(D) Initial Closed-in Pressure	1443	1443	PSI
(E) Second Initial Flow Pressure	66	66	PSI
(F) Second Final Flow Pressure	124	124	PSI
(G) Final Closed-in Pressure	1428	1428	PSI
(H) Final Hydrostatic Mud	2186	2186	PSI

POINT	Field Reading	Elec. Office Reading	PSI
(A) Initial Hydrostatic Mud	2240	2240	PSI
(B) First Initial Flow Pressure	21	21	PSI
(C) First Final Flow Pressure	63	63	PSI
(D) Initial Closed-in Pressure	1443	1443	PSI
(E) Second Initial Flow Pressure	66	66	PSI
(F) Second Final Flow Pressure	124	124	PSI
(G) Final Closed-in Pressure	1428	1428	PSI
(H) Final Hydrostatic Mud	2186	2186	PSI