

CONFIDENTIAL

ORIGINAL

RECEIVED

JUL 07 2003

KCC WICHITA

RELEASED
FROM
CONFIDENTIAL

WELL REPORT

McCoy Petroleum Corporation
Speirs "A" #4-30
E/2 W/2 NE
Section 30-26S-20W
Edwards County, Kansas
API #15-047-21,477
Spud: 4-05-03

MPC #764 (03-10)

Edford Prospect

Contractor: Sterling Drilling Company

Geologist: Chris Peters

Elevations: 2259' GL 2268' KB (All measurements from KB)

03-12-03 Arrow Rathole set 40' of 20" conductor casing with 5 yds of cement. (Set @ 49' KB).

04-04-03 MIRU Sterling Rig #4.

04-05-03 TD 220'. Spud at 4:45 AM.

04-06-03 TD 655'. WOC. Drilled 12 1/4" hole to 655'. Ran 14 joints of new 8 5/8" 23# L.S. casing. Talley = 638.14'. Set at 649' KB. Acid Services cemented with 165 sx of A-Con blend (11.6 ppg, 2.87 ft³/sk), 3% CC and 1/4#/sk cellflake followed by 100 sx Common (1.32 ft³/sk), 3% CC and 1/4#/sk cellflake. Plug down at 7:00 AM. Cement circulated. Deviation 1° @ 655'.

04-07-03 TD 1590'. Drilling ahead. Driller's Anhydrite 1309'-1352'. Geotrailer working under surface.

CONFIDENTIAL

Well Report
Page 2

KCC

ORIGINAL

McCoy Petroleum Corporation
Speirs "A" #4-30
E/2 W/2 NE
Section 30-26S-20W
Edwards County, Kansas

JUL 03 2003

CONFIDENTIAL

RELEASED
FROM
CONFIDENTIAL

SAMPLE TOPS

Structure compared to

McCoy Petroleum
Speirs "A" #4-30
E/2 W/2 NE
Sec. 30-26S-20W
KB: 2268'

McCoy Petroleum
Speirs "A" #2-30
W/2 NE NE
Sec. 30-26S-20W
KB: 2261'

McCoy Petroleum
Speirs "A" #1-30
C SE NE
Sec. 30-26S-20W
KB: 2263'

Heebner	4033 (-1765)	- 8	- 3
Lansing	4160 (-1892)	- 7	- 3
Lansing "B"	4195 (-1927)	- 8	- 4
Stark Shale	4434 (-2166)	- 9	- 5
Marmaton	4537 (-2269)	- 6	- 1
Pawnee	4650 (-2382)	- 4	- 3
Fort Scott	4690 (-2422)	- 4	- 1
Cherokee	4703 (-2435)	- 4	- 1
Warsaw Porosity	4790 (-2522)	- 8	- 5
RTD	4850 (-2582)		

04-08-03 TD 2600'. Drilling ahead.

04-09-03 TD 3295'. Drilling ahead.

04-10-03 TD 3910'. Drilling ahead.

04-11-03 TD 4460'. Drilling ahead.

04-12-03 TD 4750'. Drilling ahead.

04-13-04 TD 4798'. TIH with DST #2.

CONFIDENTIAL

Well Report
Page 3

ORIGINAL

McCoy Petroleum Corporation
Speirs "A" #4-30
E/2 W/2 NE
Section 30-26S-20W
Edwards County, Kansas

KCC
JUL 03 2003
CONFIDENTIAL

RELEASED
FROM
CONFIDENTIAL

Mississippian Warsaw Porosity 4790-4793': Dolomite, fine to medium crystalline, sucrosic. Poor to fair inter-crystalline, pin-point and vugular porosity. Fair show of free oil. Bright fluorescence. Saturated oil stain. Fair odor. 32 unit gas kick.

DST #1 4736-4793' (Mississippian Warsaw)
Open 30", SI 60", Open 60", SI 90"
Strong blow, OBB/1" on 1st open period.
Strong blow, OBB/1" on 2nd open period.
Recovered 2670' of gas in pipe,
 175' of gas cut mud, trace of oil,
 62' of gas and oil cut watery mud, (10% gas, 2% oil, 60% mud, 28% wtr)
 62' of gas and oil cut watery mud, (4% gas, 4% oil, 46% mud, 46% wtr)
FP 51-86# 86-141#
ISIP 1162# FSIP 1158#

Additional Mississippian Warsaw Porosity 4793-4798': Dolomite as above, increase in oil show. Good even light brown oil saturation. Good odor.

DST #2 4735-4798' (Mississippian Warsaw)
Open 30", SI 60", Open 60", SI 90"
Strong blow, OBB/1 1/2" on 1st open period.
Strong blow, OBB/1" on 2nd open period.
Gas to the surface in 58", TSTM, on 2nd open period.
Recovered 130' of gas cut mud, trace of oil,
 180' of gas cut watery mud with oil specks,
 185' of gas and oil cut muddy water,
 435' of water with oil specks. (32,000 ppm chlorides)
FP 86-242# 237-420#
ISIP 1161# FSIP 1162#

04-14-03 RTD 4850'. LTD 4850'. Ran ELI Radiation Guard Log. Plugged well with 135 sx of 60/40 pozmix with 6% gel. Set 50 sx plug at 1350', 50 sx at 680' and 10 sx at 40' to surface. Heavy mud in hole and between all plugs. Put 15 sx in rathole and 10 sx in mousehole. Plug down at 9:30 AM. Rig released at 2:30 PM.

CONFIDENTIAL

Well Report
Page 4

McCoy Petroleum Corporation
Speirs "A" #4-30
E/2 W/2 NE
Section 30-26S-20W
Edwards County, Kansas

KCC

JUL 03 2003

CONFIDENTIAL

ORIGINAL

RELEASED
FROM
CONFIDENTIAL

<i>ELECTRIC LOG TOPS</i>	<i>Structure compared to</i>	
McCoy Petroleum Speirs "A" #4-30 E/2 W/2 NE Sec. 30-26S-20W KB: 2268'	McCoy Petroleum Speirs "A" #2-30 W/2 NE NE Sec. 30-26S-20W KB: 2261'	McCoy Petroleum Speirs "A" #1-30 C SE NE Sec. 30-26S-20W KB: 2263'

Heebner	4032 (-1764)	- 7	- 2
Brown Lime	4152 (-1884)		
Lansing	4160 (-1892)	- 7	- 3
Stark Shale	4437 (-2169)	-12	- 8
Pawnee	4652 (-2384)	- 6	+1
Fort Scott	4690 (-2422)	- 4	- 1
Cherokee	4703 (-2435)	- 4	- 1
Mississippian Lime	4780 (-2512)	- 5	- 5
Warsaw Porosity	4792 (-2524)	-10	- 7
LTD	4850 (-2582)		

CONFIDENTIAL

ORIGINAL

KCC

RECEIVED

JUL 03 2003

JUL 07 2003

CONFIDENTIAL

KCC WICHITA



TRILOBITE TESTING, INC.

RELEASED FROM CONFIDENTIAL

DRILL STEM TEST REPORT

Prepared For: **McCoy Petl.Corp.**

P.O.Box 780208
Wichita Ks. 67278

ATTN: Chris Peters

30-26s-20w Edwards K

.Speirs A #4-30

Start Date: 2003.04.12 @ 16:13:57

End Date: 2003.04.12 @ 23:57:12

Job Ticket #: 16867 DST #: 1

Trilobite Testing, Inc

PO Box 362 Hays, KS 67601

ph: 785-625-4778 fax: 785-625-5620

McCoy Petl.Corp.

Speirs A #4-30

30-26s-20w Edwards K

DST # 1

Miss.

2003.04.12

CONFIDENTIAL



TRIOBITE TESTING, INC

DRILL STEM TEST REPORT

McCoy Petr. Corp.

P.O. Box 780208
Wichita Ks. 67278

ATTN: Chris Peters

RECEIVED
JUL 07 2003
KCC WICHITA

Speirs A #4-30

30-26s-20w Edwards K

Job Ticket: 16867

DST#: 1

Test Start: 2003.04.12 @ 16:13:57

GENERAL INFORMATION:

Formation: Miss.
Deviated: No Whipstock: ft (KB)
Time Tool Opened: 18:06:12
Time Test Ended: 23:57:12

Interval: 4736.00 ft (KB) To 4793.00 ft (KB) (TVD)
Total Depth: 4793.00 ft (KB) (TVD)
Hole Diameter: 7.88 inches Hole Condition: Fair

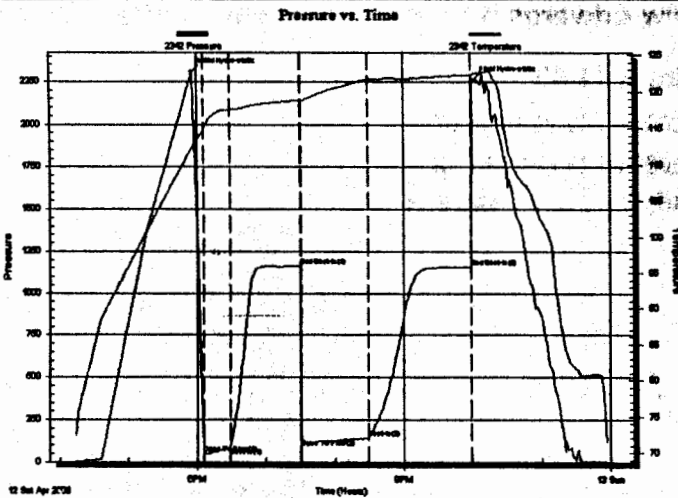
KCC
JUL 03 2003
CONFIDENTIAL

Test Type: Conventional Bottom Hole
Tester: Gary Pevoteaux
Unit No: 23

Reference Elevations: 2268.00 ft (KB)
2259.00 ft (CF)
KB to GR/CF: 9.00 ft

Serial #: 2342 Inside
Press@RunDepth: 140.81 psig @ 4737.00 ft (KB) Capacity: 7000.00 psig
Start Date: 2003.04.12 End Date: 2003.04.12 Last Calib.: 2003.04.13
Start Time: 16:13:58 End Time: 23:57:12 Time On Btm: 2003.04.12 @ 17:55:57
Time Off Btm: 2003.04.12 @ 22:01:12

TEST COMMENT: F: Strong blow. B.O.B. in 1 min.
IS: No blow.
FF: Strong blow. B.O.B. in 1 min.
FST: No blow.



Time (Min.)	Pressure (psig)	Temp (deg F)	Annotation
0	2307.97	112.40	Initial Hydro-static
11	51.06	114.60	Open To Flow (1)
33	85.84	117.51	Shut-In(1)
94	1161.93	118.83	End Shut-In(1)
95	86.06	118.81	Open To Flow (2)
153	140.61	121.69	Shut-In(2)
244	1157.65	122.29	End Shut-In(2)
246	2261.97	122.41	Final Hydro-static

Length (ft)	Description	Volume (bbl)
63.00	GOCWM 4%g 4%o 46%w 46% m Rw	380.31
0.00	ohms @ 59 deg. F	0.00
62.00	GOCWM 10%g 2%o 28%w 60% m	0.30
175.00	GCM with a trace of oil 12%g 88% m	1.33
0.00	2670 ft. of gas in pipe	0.00

Choke (Inches)	Pressure (psig)	Gas Rate (Mcf/d)



**TRILOBITE
TESTING, INC**

DRILL STEM TEST REPORT

TOOL DIAGRAM

McCoy Petl. Corp.

P.O.Box 780208
Wichita Ks. 67278

ATTN: Chris Peters

RECEIVED
JUL 07 2003
KCC WICHITA

Speirs A #4-30

30-26s-20w Edwards K

Job Ticket: 16867

DST#: 1

Test Start: 2003.04.12 @ 16:13:57

Tool Information

Drill Pipe:	Length: 4498.00 ft	Diameter: 3.80 inches	Volume: 63.10 bbl	Tool Weight: 2100.00 lb
Heavy Wt. Pipe:	Length: 0.00 ft	Diameter: 0.00 inches	Volume: 0.00 bbl	Weight set on Packer: 20000.00 lb
Drill Collar:	Length: 248.00 ft	Diameter: 2.25 inches	Volume: 1.22 bbl	Weight to Pull Loose: 84000.00 lb
			Total Volume: 64.32 bbl	Tool Chased 0.00 ft
Drill Pipe Above KB:	30.00 ft			String Weight: Initial 74000.00 lb
Depth to Top Packer:	4736.00 ft			Final 76000.00 lb
Depth to Bottom Packer:	ft			
Interval between Packers:	57.00 ft			
Tool Length:	77.00 ft			
Number of Packers:	2	Diameter: 6.75 inches		

Tool Comments:

Tool Description	Length (ft)	Serial No.	Position	Depth (ft)	Accum. Lengths
C.O. Sub	1.00			4717.00	
S.I. Tool	5.00			4722.00	
HMV	5.00			4727.00	
Packer	4.00			4731.00	20.00 Bottom Of Top Packer
Packer	5.00			4736.00	
Stubb	1.00			4737.00	
Recorder	0.00	2342	Inside	4737.00	
Perforations	3.00			4740.00	
C.O. Sub	1.00			4741.00	
Blank Spacing	31.00			4772.00	
C.O. Sub	1.00			4773.00	
Perforations	15.00			4788.00	
Recorder	0.00	13222	Outside	4788.00	
Bullnose	5.00			4793.00	57.00 Bottom Packers & Anchor

Total Tool Length: 77.00



**TRILOBITE
TESTING, INC**

DRILL STEM TEST REPORT

FLUID SUMMARY

McCoy Petr. Corp.

RECEIVED

Speirs A #4-30

P.O.Box 780208
Wichita Ks. 67278

JUL 07 2003

30-26s-20w Edwards K

ATTN: Chris Peters

KCC WICHITA

Job Ticket: 16867

DST#: 1

Test Start: 2003.04.12 @ 16:13:57

Mud and Cushion Information

Mud Type: Gel Chem

Cushion Type:

Oil API:

deg API:

Mud Weight: 10.00 lb/gal

Cushion Length:

ft

Water Salinity:

26000 ppm

Viscosity: 53.00 sec/qt

Cushion Volume:

bbbl

Water Loss: 9.58 in³

Gas Cushion Type:

Resistivity: 0.00 ohm.m

Gas Cushion Pressure:

psig

Salinity: 4000.00 ppm

Filter Cake: 0.20 inches

Recovery Information

Recovery Table

Length ft	Description	Volume bbl
63.00	GOCWM 4%g 4%o 46%w 46%m Rw .38	0.310
0.00	ohms @ 59 deg. F	0.000
62.00	GOCWM 10%g 2%o 28%w 60%m	0.305
175.00	GCM with a trace of oil 12%g 88%m	1.334
0.00	2670 ft. of gas in pipe	0.000

Total Length: 300.00 ft

Total Volume: 1.949 bbl

Num Fluid Samples: 0

Num Gas Bombs: 0

Serial #: none

Laboratory Name:

Laboratory Location:

Recovery Comments:

Serial #. 2342

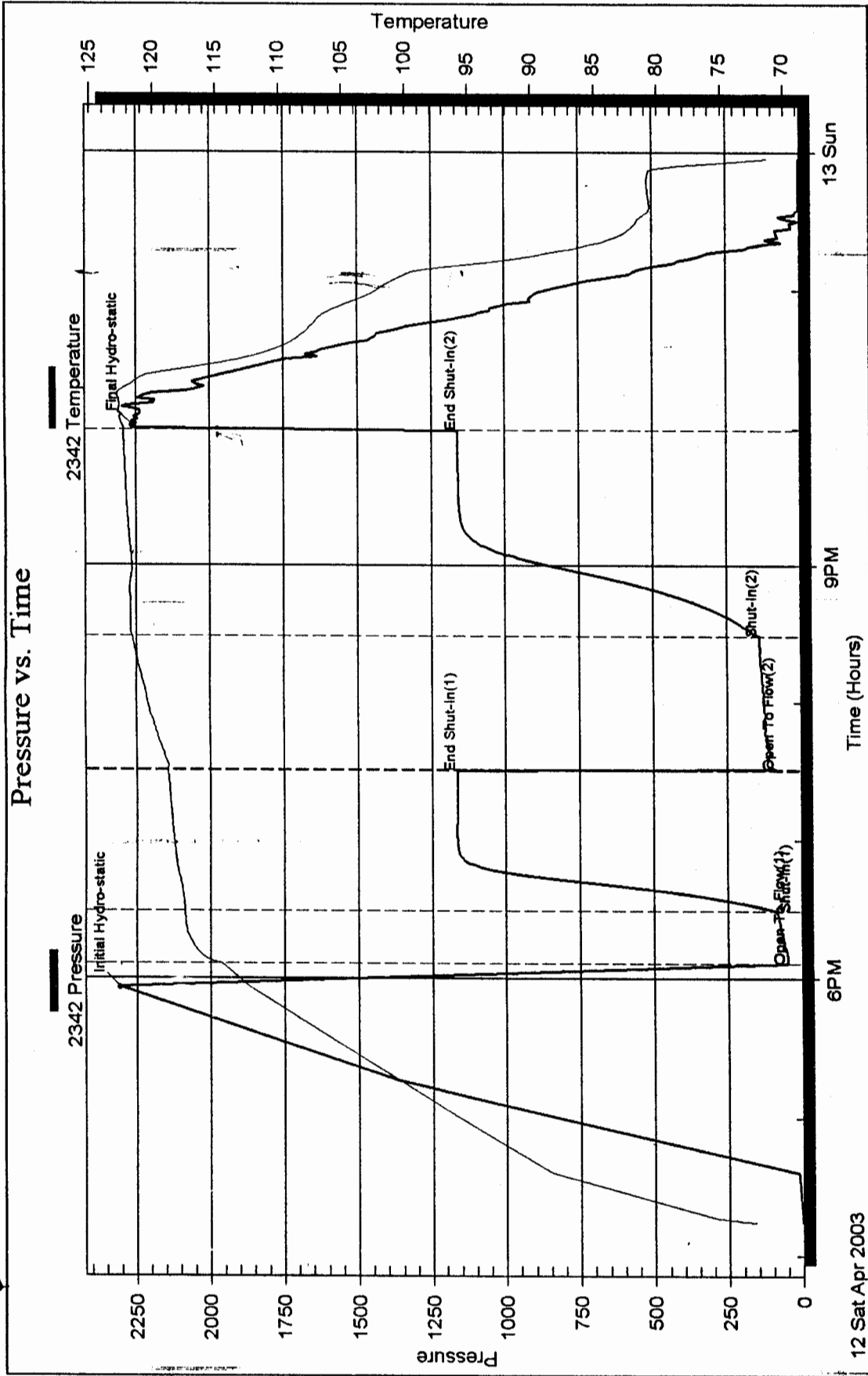
Inside

McCoy Refl. Corp.

30-26s-20w Edwards K

DST Test Number: 1

Pressure vs. Time



RECEIVED
JUL 07 2003
KCC WICHITA

Ref. No. 16867

Trilobite Testing, Inc

CONFIDENTIAL

ORIGINAL

KCC

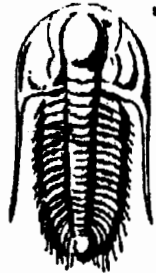
JUL 03 2003

CONFIDENTIAL

RECEIVED

JUL 07 2003

KCC WICHITA



**TRILOBITE
TESTING, INC.**

RELEASED
FROM
CONFIDENTIAL

DRILL STEM TEST REPORT

Prepared For: **McCoy Petl.Corp.**

P.O.Box 780208
Wichita Ks. 67278

ATTN: Chris Peters

30-26s-20w Edwards K

Speirs A #4-30

Start Date: 2003.04.13 @ 06:42:01

End Date: 2003.04.13 @ 14:59:46

Job Ticket #: 16868 DST #: 2

Trilobite Testing, Inc

PO Box 362 Hays, KS 67601

ph: 785-625-4778 fax: 785-625-5620

McCoy Petl.Corp.

Speirs A #4-30

30-26s-20w Edwards K

DST # 2

Miss.

2003.04.13



TRILOBITE TESTING, INC.

DRILL STEM TEST REPORT

McCoy Pet. Corp.

Speirs A #4-30

P.O.Box 780208
Wichita Ks. 67278

RECEIVED
JUL 07 2003
KCC WICHITA

30-26s-20w Edwards K

Job Ticket: 16868

DST#: 2

ATTN: Chris Peters

Test Start: 2003.04.13 @ 06:42:01

GENERAL INFORMATION:

Formation: Miss.
Deviated: No Whipstock: ft (KB)
Time Tool Opened: 08:35:46
Time Test Ended: 14:59:46

KCC
JUL 03 2003
CONFIDENTIAL

Test Type: Conventional Bottom Hole
Tester: Gary Fevoteaux
Unit No: 23

Interval: 4735.00 ft (KB) To 4798.00 ft (KB) (TVD)
Total Depth: 4798.00 ft (KB) (TVD)
Hole Diameter: 7.88 inches Hole Condition: Fair

Reference Elevations: 2268.00 ft (KB)
2259.00 ft (CF)
KB to GR/CF: 9.00 ft

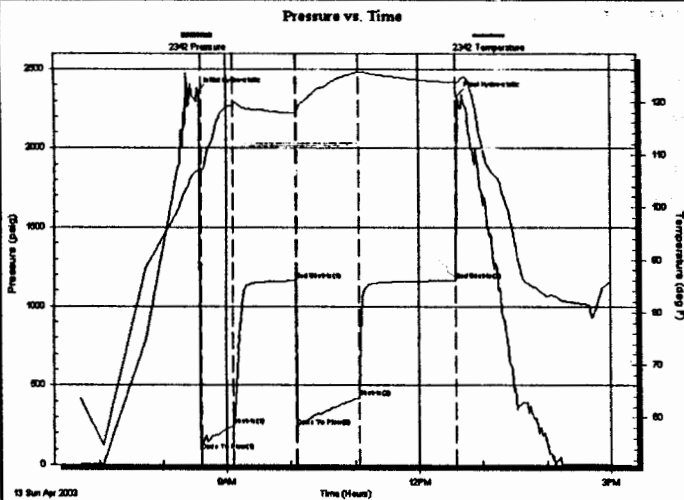
Serial #: 2342

Inside

Press@RunDepth: 419.59 psig @ 4736.00 ft (KB)
Start Date: 2003.04.13 End Date: 2003.04.13
Start Time: 06:42:02 End Time: 14:59:46

Capacity: 7000.00 psig
Last Call: 2003.04.13
Time On Btrr: 2003.04.13 @ 08:33:31
Time Off Btrr: 2003.04.13 @ 12:36:46

TEST COMMENT: F:Strong blow . B.O.B. in 1 1/2 mins.
IS:Weak blow . 1/2 - 2".
FF:Strong blow . B.O.B. in 1 min. GTS in 55 mins. TSTM
FS:Fair to strong blow . B.O.B.



PRESSURE SUMMARY

Time (Min.)	Pressure (psig)	Temp (deg F)	Annotation
0	2359.83	107.05	Initial Hydro-static
3	85.81	107.21	Open To Flow (1)
32	242.17	119.38	Shut-In (1)
92	1160.51	118.00	End Shut-In (1)
93	237.22	118.02	Open To Flow (2)
150	419.59	125.62	Shut-In (2)
242	1162.43	123.73	End Shut-In (2)
244	2331.72	123.76	Final Hydro-static

Recovery

Length (ft)	Description	Volume (bbl)
435.00	Salt water with oil specs 1%o 99%w	3.84
0.00	Rw .21 ohms @76 deg. F	0.00
185.00	GOCMW 10%g 15%o 30%m 45%w	2.60
180.00	GCWM 12%g 23%w 65%m	2.52
130.00	GCM with a trace of oil	1.82

Gas Rates

	Choke (Inches)	Pressure (psig)	Gas Rate (Mc/d)



**TRILOBITE
TESTING, INC.**

DRILL STEM TEST REPORT

TOOL DIAGRAM

McCoy Petl. Corp.

RECEIVED

Speirs A #4-30

P.O.Box 780208
Wichita Ks. 67278

JUL 07 2003

30-26s-20w Edwards K

ATTN: Chris Peters

KCC WICHITA

Job Ticket: 16868

DST#: 2

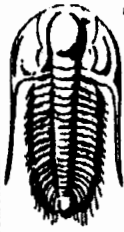
Test Start: 2003.04.13 @ 06:42:01

Tool Information

Drill Pipe:	Length: 4498.00 ft	Diameter: 3.80 inches	Volume: 63.10 bbl	Tool Weight: 2100.00 lb
Heavy Wt. Pipe:	Length: 0.00 ft	Diameter: 0.00 inches	Volume: 0.00 bbl	Weight set on Packer: 20000.00 lb
Drill Collar:	Length: 248.00 ft	Diameter: 2.25 inches	Volume: 1.22 bbl	Weight to Pull Loose: 90000.00 lb
			Total Volume: 64.32 bbl	Tool Chased 0.00 ft
Drill Pipe Above KB:	31.00 ft			String Weight: Initial 76000.00 lb
Depth to Top Packer:	4735.00 ft			Final 81000.00 lb
Depth to Bottom Packer:	ft			
Interval between Packers:	63.00 ft			
Tool Length:	83.00 ft			
Number of Packers:	2	Diameter: 6.75 inches		
Tool Comments:				

Tool Description	Length (ft)	Serial No.	Position	Depth (ft)	Accum. Lengths
C.O. Sub	1.00			4716.00	
S.I. Tool	5.00			4721.00	
HMV	5.00			4726.00	
Packer	4.00			4730.00	20.00 Bottom Of Top Packer
Packer	5.00			4735.00	
Stubb	1.00			4736.00	
Recorder	0.00	2342	Inside	4736.00	
Perforations	4.00			4740.00	
C.O. Sub	1.00			4741.00	
Blank Spacing	31.00			4772.00	
C.O. Sub	1.00			4773.00	
Perforations	20.00			4793.00	
Recorder	0.00	13222	Outside	4793.00	
Bullnose	5.00			4798.00	63.00 Bottom Packers & Anchor

Total Tool Length: 83.00



**TRILOBITE
TESTING, INC.**

DRILL STEM TEST REPORT

FLUID SUMMARY

McCoy Petl. Corp.

RECEIVED

Speirs A #4-30

P.O.Box 790208
Wichita Ks. 67278

JUL 07 2003

30-26s-20w Edwards-K

Job Ticket: 16868

DST#: 2

ATTN: Chris Peters

KCC WICHITA

Test Start: 2003.04.13 @ 06:42:01

Mud and Cushion Information

Mud Type: Gel Chem

Cushion Type:

Oil API:

deg API

Mud Weight: 10.00 lb/gal

Cushion Length:

ft

Water Salinity:

32000 ppm

Viscosity: 53.00 sec/qt

Cushion Volume:

bbl

Water Loss: 9.56 in³

Gas Cushion Type:

Resistivity: 0.00 ohm.m

Gas Cushion Pressure:

psig

Salinity: 4000.00 ppm

Filter Cake: 0.20 inches

Recovery Information

Recovery Table

Length ft	Description	Volume bbl
435.00	Salt water with oil specs 1%o 99%w	3.843
0.00	Rw .21 ohms @76 deg. F	0.000
185.00	GOCMW 10%g 15%o 30%m 45%w	2.595
180.00	GCWM 12%g 23%w 65%m	2.525
130.00	GCM with a trace of oil	1.824

Total Length: 930.00 ft

Total Volume: 10.787 bbl

Num Fluid Samples: 0

Num Gas Bombs: 0

Serial #:

Laboratory Name:

Laboratory Location:

Recovery Comments:

JUL 07 2003

KCC WICHITA

Serial #: 2342

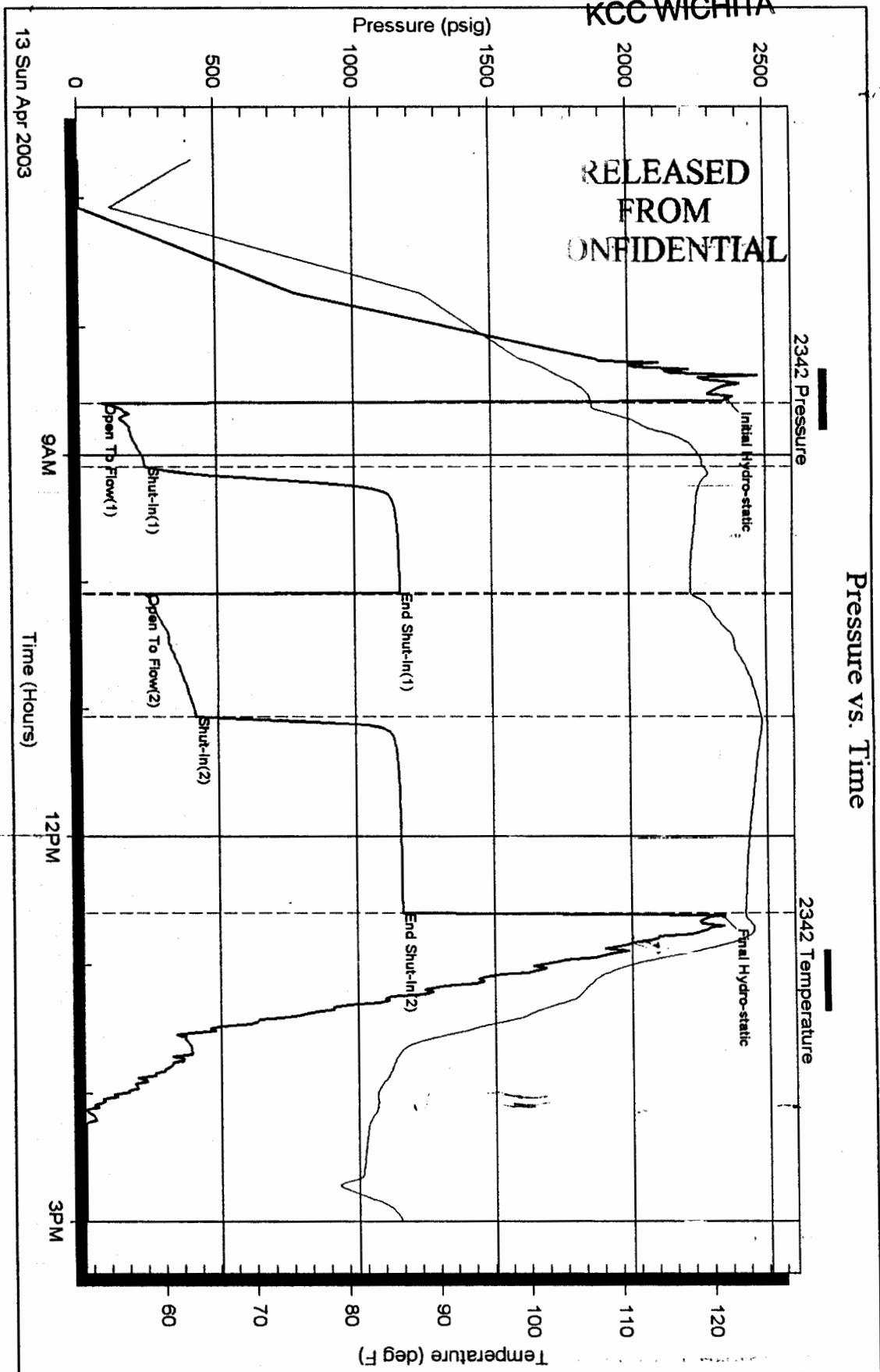
Inside

McCoy Pet Corp.

30-26s-20w Edwards K

DST Test Number: 2

Pressure vs. Time



RELEASED FROM CONFIDENTIAL

Trilobite Testing, Inc

Ref. No: 16868

Printed: 2003.04.17 @ 10:39:26 Page 5