

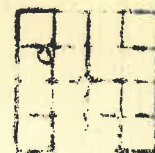
Pl.

MAGNOLIA PETRO. CO.  
 Amos Harris No. 4.

SEC. 9 T.26 R. 4W  
 NE SW NW

Total Depth. 4058'  
 Comm. 2-20-37 Comp. 4-1-37  
 Shot or Treated, 250 Gals.  
 Contractor,  
 Issued, 5-8-37

County, Reno



CASING:  
 13" 200'  
 7" 4047' SLM

Elevation. 1519

Production, Pot. 1195 B.  
 after acid.

Figures Indicate Bottom of Formations.

|                          |      |
|--------------------------|------|
| red rock, shale & shells | 200  |
| shale & shells           | 400  |
| shale sft                | 600  |
| shale & shells           | 1125 |
| lime                     | 1230 |
| sand & lime              | 1300 |
| shale                    | 1440 |
| shale & shells           | 1570 |
| shale                    | 1675 |
| shale & lime             | 1800 |
| shale & shells           | 1910 |
| shale                    | 1930 |
| lime                     | 1970 |
| shale & shells           | 2200 |
| shale                    | 2260 |
| shale & shells           | 2330 |
| shale & lime             | 2485 |
| shale                    | 2500 |
| lime                     | 2765 |
| shale & lime             | 2870 |
| lime                     | 3240 |
| shale & lime             | 3276 |
| lime                     | 3330 |
| shale & lime             | 3357 |
| lime                     | 3425 |
| shale                    | 3465 |
| lime                     | 3505 |
| shale & lime             | 3592 |
| lime                     | 3608 |
| shale-Top Chat           | 3627 |
| chat                     | 3677 |
| chat & lime              | 3715 |
| lime                     | 3755 |
| chat & lime              | 3810 |
| lime                     | 3942 |
| shale & shells           | 4045 |
| shale                    | 4054 |
| Top Misner               | 4034 |
| shale-cored              | 4059 |
| Standardized             |      |
| SLM 4059 equals 4047     |      |
| Top of Misner 4022 Corr. |      |
| shale-cored              | 4055 |
| Top of Viola lime 4055   |      |
| Viola lime-cored         | 4058 |
| Total Depth.             |      |

4055  
 - 1519  
 -----  
 2536

Well treated with 250 Gals. 4-2-37  
 Hole full oil.