



Home Office: Wichita, Kansas 67201

P.O. Box 1599

(316) 262-5861

Company J. A. Allison

Lease & Well No. Donell #1

Elevation --- Formation Kansas City Effective Pay - Ft. Ticket No. 13969

Date 3/16/82 Sec. 5 Twp. 27S Range 1W County Sedgwick State Kansas

Test Approved by Phil Hart Western Representative Richard Howell

Formation Test No. 1 Interval Tested from 2808 ft. to 2840 ft. Total Depth 2840 ft.

Packer Depth 2803 ft. Size 6 3/4 in. Packer Depth - ft. Size - in.

Packer Depth 2808 ft. Size 6 3/4 in. Packer Depth - ft. Size - in.

Depth of Selective Zone Set -

Top Recorder Depth (Inside) 2812 ft. Recorder Number 13402 Cap. 4025

Bottom Recorder Depth (Outside) 2815 ft. Recorder Number 13267 Cap. 4050

Below Straddle Recorder Depth - ft. Recorder Number - Cap. -

Drilling Contractor D.N.B. Drlg. Rig #3 Drill Collar Length 557 I. D. 2.2 in.

Mud Type - Viscosity 49 Weight Pipe Length - I. D. - in.

Weight 9.1 Water Loss 10.8 cc. Drill Pipe Length 2237 I. D. 3.8 in.

Chlorides 1,200 P.P.M. Test Tool Length 20 ft. Tool Size 5 1/2 in.

Jars: Make - Serial Number - Anchor Length 32 ft. Size 5 1/2 in.

Did Well Flow? No Reversed Out No Surface Choke Size 3/4 in. Bottom Choke Size 3/4 in.

Main Hole Size 7 7/8 in. Tool Joint Size 4 1/2 XH in.

Blow: Initial flow period weak building slowly to one inch into bucket. Final flow period fair, decreasing to one inch into bucket.

Recovered 57 ft. of 7% oil; 5% water; 81% mud; 7% gas

Recovered 62 ft. of 14% oil; 5% water; 74% mud; 7% gas

Recovered - ft. of -

Recovered - ft. of -

Recovered - ft. of -

Remarks:

Time Set Packer(s) 1:35 A.M. P.M. Time Started Off Bottom 4:35 A.M. P.M. Maximum Temperature 80°

Initial Hydrostatic Pressure (A) 1348 P.S.I.

Initial Flow Period Minutes 30 (B) 30 P.S.I. to (C) 40 P.S.I.

Initial Closed In Period Minutes 42 (D) 1131 P.S.I.

Final Flow Period Minutes 60 (E) 53 P.S.I. to (F) 69 P.S.I.

Final Closed In Period Minutes 45 (G) 1104 P.S.I.

Final Hydrostatic Pressure (H) 1321 P.S.I.

WESTERN TESTING CO., INC.

Pressure Data

Date 3/16/82 Test Ticket No. 13960  
 Recorder No. 13402 Capacity 4025 Location 2812 Ft.  
 Clock No. -- Elevation --- Well Temperature 80 °F

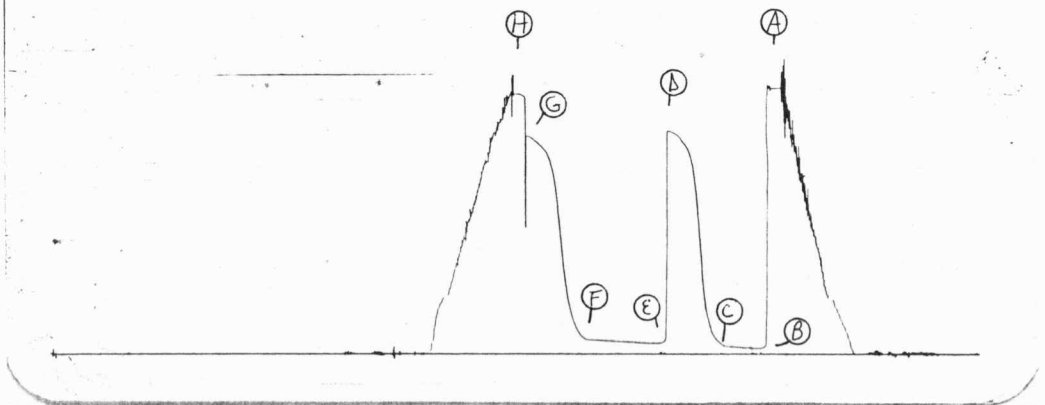
Point	Pressure		Time Given	Time Computed
A Initial Hydrostatic Mud	1348 P.S.I.	Open Tool	1:35P	M
B First Initial Flow Pressure	30 P.S.I.	First Flow Pressure	30 Mins	30 Mins.
C First Final Flow Pressure	40 P.S.I.	Initial Closed-in Pressure	45 Mins	42 Mins.
D Initial Closed-in Pressure	1131 P.S.I.	Second Flow Pressure	60 Mins	60 Mins.
E Second Initial Flow Pressure	53 P.S.I.	Final Closed-in Pressure	45 Mins	45 Mins.
F Second Final Flow Pressure	69 P.S.I.			
G Final Closed-in Pressure	1104 P.S.I.			
H Final Hydrostatic Mud	1321 P.S.I.			

PRESSURE BREAKDOWN

First Flow Pressure		Initial Shut-In		Second Flow Pressure		Final Shut-In	
Breakdown: <u>6</u> Inc.		Breakdown: <u>14</u> Inc.		Breakdown: <u>12</u> Inc.		Breakdown: <u>15</u> Inc.	
of <u>5</u> mins. and a		of <u>3</u> mins. and a		of <u>5</u> mins. and a		of <u>3</u> mins. and a	
final inc. of <u>0</u> Min.		final inc. of <u>0</u> Min.		final inc. of <u>0</u> Min.		final inc. of <u>0</u> Min.	
Point Mins.	Press.	Point Minutes	Press.	Point Minutes	Press.	Point Minutes	Press.
P 1	0	0	40	0	53	0	69
P 2	5	3	53	5	53	3	83
P 3	10	6	74	10	53	6	110
P 4	15	9	108	15	55	9	154
P 5	20	12	177	20	56	12	222
P 6	25	15	302	25	58	15	337
P 7	30	18	551	30	60	18	508
P 8		21	816	35	62	21	735
P 9		24	974	40	64	24	899
P10		27	1038	45	66	27	984
P11		30	1068	50	67	30	1028
P12		33	1098	55	68	33	1052
P13		36	1114	60	69	36	1072
P14		39	1126			39	1088
P15		42	1131			42	1102
P16						45	1104
P17							
P18							
P19							
P20							

#13402 DST # 1

TKT # 13969  
I



This is an actual photograph of recorder chart.

POINT	PRESSURE		
	Field Reading	Office Reading	
(A) Initial Hydrostatic Mud	1334	1348	PSI
(B) First Initial Flow Pressure	39	30	PSI
(C) First Final Flow Pressure	49	40	PSI
(D) Initial Closed-in Pressure	1135	1131	PSI
(E) Second Initial Flow Pressure	49	53	PSI
(F) Second Final Flow Pressure	88	69	PSI
(G) Final Closed-in Pressure	1105	1104	PSI
(H) Final Hydrostatic Mud	1284	1321	PSI