

FORMATION TEST REPORT



Home Office:

Wichita, Kansas 67201

P.O. Box 1599

Phone (316) 262-5861

COMPANY BEREXCO, INC. LEASE & WELL NO. EUGENE DAVIS #3-1 SEC. 1 TWP. 27S RGE. 33W TEST NO. 1 DATE 1-15-88

WESTERN TESTING CO. INC.
SUBSURFACE PRESSURE SURVEY

DATE : 1-15-88
CUSTOMER : BEREXCO INC.
WELL : #3-1 TEST: 1
ELEVATION : 2920
SECTION : 1
RANGE : 33W COUNTY : HASKELL
GAUGE SN# : 13759 RANGE : 3900
TICKET : 12730
LEASE : EUGENE DAVIS
GEOLOGIST : C. SPRADLIN
FORMATION : KC A
TOWNSHIP : 27S
STATE : KANSAS
CLOCK : 12

INTERVAL FROM : 4463 TO : 4498 TOTAL DEPTH : 4498
DEPTH OF SELECTIVE ZONE :
PACKER DEPTH : 4458 SIZE : 6.75
PACKER DEPTH : 4463 SIZE : 6.75
PACKER DEPTH : SIZE :
PACKER DEPTH : SIZE :

DRILLING CON. : BEREDCO
MUD TYPE : CHEMICAL VISCOSITY : 45
WEIGHT : 9.1 WATER LOSS (CC) : 10
CHLORIDES (PPM) : 1800
JARS-MAKE : WTC SERIAL NUMBER : 419
DID WELL FLOW ? : NO REVERSED OUT ? : NO

DRILL COLLAR LENGTH : 636 FT I.D. inch : 2.20
WEIGHT PIPE LENGTH : 0 FT I.D. inch : 0.00
DRILL PIPE LENGTH : 3798 FT I.D. inch : 3.80
TEST TOOL LENGTH : 29 FT TOOL SIZE : 5.50
ANCHOR LENGTH : 35 FT ANCHOR SIZE : 5.50
SURFACE CHOKE SIZE : .75 IN BOTTOM CHOKE SIZE : .75
MAIN HOLE SIZE : 7.875 IN TOOL JOINT SIZE : 4.5 XH

BLOW COMMENT #1 : INITIAL FLOW-VERY WEAK SURFACE BLOW.
BLOW COMMENT #2 : FINAL FLOW-WEAK SURFACE BLOW-DIED IN 2 MINUTES.
BLOW COMMENT #3 :
BLOW COMMENT #4 :

RECOVERED : 10 FT OF: MUD

Total Barrels Fluid = 0.05
Total Fluid Prod Rate = 1.50 BFPD
Indicated Wtr Rate = 0.15 BWPD

REMARK 1 :
REMARK 2 :
REMARK 3 :
REMARK 4 :

SET PACKER(S) : 5:20 PM

TIME STARTED OFF BOTTOM : 7:35 PM

WELL TEMPERATURE : 113

INITIAL HYDROSTATIC PRESSURE

(A) 2180

INITIAL FLOW PERIOD MIN: 15

(B) 65 PSI TO (C) : 33

INITIAL CLOSED IN PERIOD MIN: 30

(D) 1082

FINAL FLOW PERIOD MIN: 30

(E) 35 PSI TO (F) : 35

FINAL CLOSED IN PERIOD MIN: 57

(G) 1146

FINAL HYDROSTATIC PRESSURE

(H) 2164

WESTERN TESTING CO. INC.
WICHITA - KANSAS

Pressure Transient Report

COMPANY : BEREXCO INC.
RIG : HASKELL-KANSAS
FIELD : EUGENE DAVIS
WELL : #3-1
DATE : 1-15-88
GAUGE NO : 13759

OPERATIONAL COMMENTS

COMPANY : BEREXCO INC.
WELL : #3-1
GAUGE # : 13759
DATE : 15/ 1/88

FIELD : EUGENE DAVIS
JOB # : 12730
DEPTH : 4498
TEST :

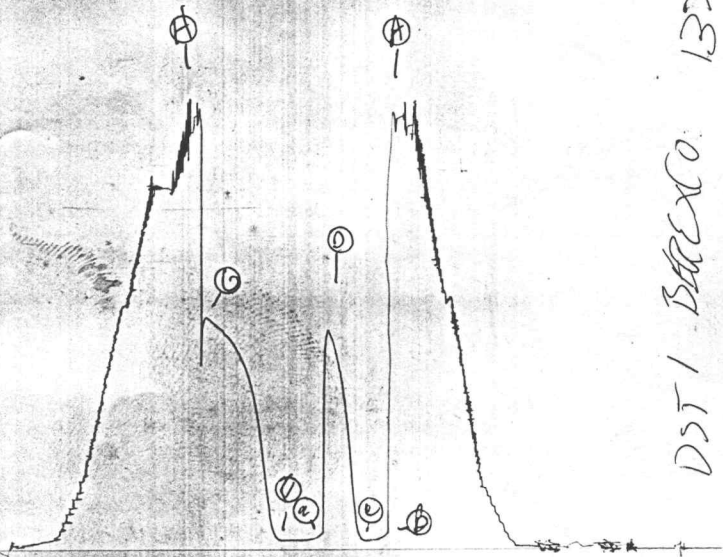
DATA No.	REAL TIME HR:MN:SS	ELAPSE TIME DELTA HOURS	PRESSURE PSIG	TEMP DEG F	DELTA P $P_i - P_{(i-1)}$
1	5:20: 0	0.000	65.000	113.00	0.000
2	5:24:59	0.083	42.000	113.00	-23.000
3	5:30: 0	0.167	36.000	113.00	-6.000
4	5:35: 0	0.250	33.000	113.00	-3.000
5	5:38: 0	0.300	35.000	113.00	2.000
6	5:41: 0	0.350	72.000	113.00	37.000
7	5:44: 0	0.400	219.000	113.00	147.000
8	5:47: 0	0.450	407.000	113.00	188.000
9	5:50: 0	0.500	594.000	113.00	187.000
10	5:53: 0	0.550	766.000	113.00	172.000
11	5:56: 0	0.600	897.000	113.00	131.000
12	5:59: 0	0.650	996.000	113.00	99.000
13	6: 2: 0	0.700	1055.000	113.00	59.000
14	6: 5: 0	0.750	1082.000	113.00	27.000
15	6: 6: 0	0.767	35.000	113.00	-1047.000
16	6: 9:59	0.833	35.000	113.00	0.000
17	6:15: 0	0.917	35.000	113.00	0.000
18	6:20: 0	1.000	35.000	113.00	0.000
19	6:24:59	1.083	35.000	113.00	0.000
20	6:30: 0	1.167	35.000	113.00	0.000
21	6:35: 0	1.250	35.000	113.00	0.000
22	6:38: 0	1.300	38.000	113.00	3.000
23	6:41: 0	1.350	70.000	113.00	32.000
24	6:44: 0	1.400	146.000	113.00	76.000
25	6:47: 0	1.450	278.000	113.00	132.000
26	6:50: 0	1.500	436.000	113.00	158.000
27	6:53: 0	1.550	622.000	113.00	186.000
28	6:56: 0	1.600	746.000	113.00	124.000
29	6:59: 0	1.650	837.000	113.00	91.000
30	7: 2: 0	1.700	896.000	113.00	59.000
31	7: 5: 0	1.750	945.000	113.00	49.000
32	7: 8: 0	1.800	979.000	113.00	34.000
33	7:11: 0	1.850	1016.000	113.00	37.000
34	7:14: 0	1.900	1042.000	113.00	26.000
35	7:17: 0	1.950	1060.000	113.00	18.000
36	7:20: 0	2.000	1090.000	113.00	30.000
37	7:23: 0	2.050	1104.000	113.00	14.000
38	7:26: 0	2.100	1123.000	113.00	19.000
39	7:29: 0	2.150	1139.000	113.00	16.000
40	7:32: 0	2.200	1146.000	113.00	7.000

WESTERN TESTING CO. INC.

IR # 12750

14

I



DST / BAREXCO

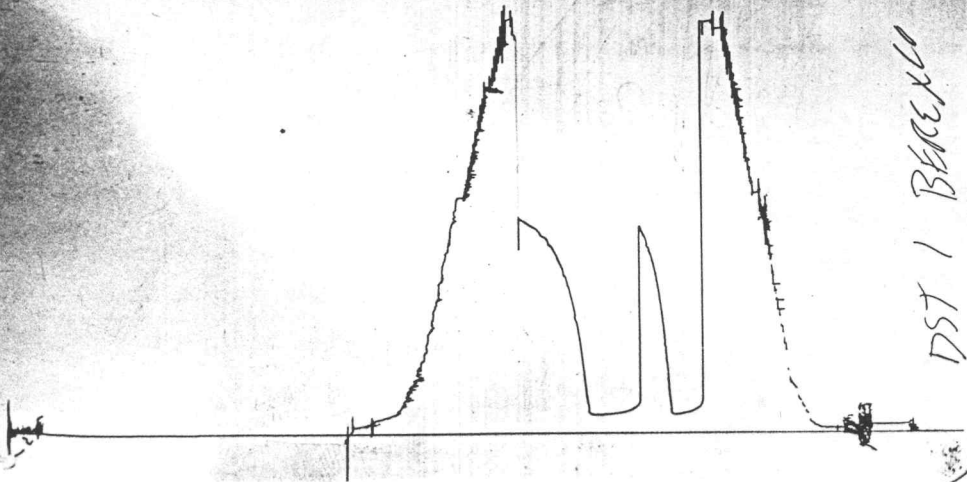
13259

JK # 12730

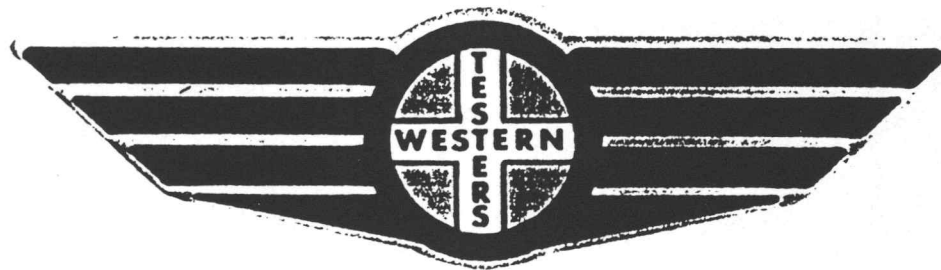
0

K

DST 1 BECEX 13551



FORMATION TEST REPORT



Home Office:

Wichita, Kansas 67201

P.O. Box 1599

Phone (316) 262-5861

WESTERN TESTING CO. INC.
SUBSURFACE PRESSURE SURVEY

DATE : 1-15-88
CUSTOMER : BEREXCO INC.
WELL : #3-1 TEST: 2
ELEVATION : 2920
SECTION : 1
RANGE : 33W COUNTY : HASKELL
GAUGE SN# : 13759 RANGE : 3900
TICKET : 12731
LEASE : EUGENE DAVIS
GEOLOGIST : C. SPRADLIN
FORMATION : LANSING
TOWNSHIP : 27S
STATE : KANSAS
CLOCK : 12

INTERVAL FROM : 4405 TO : 4425 TOTAL DEPTH : 4498
DEPTH OF SELECTIVE ZONE :
PACKER DEPTH : 4400 SIZE : 6.75
PACKER DEPTH : 4405 SIZE : 6.75
PACKER DEPTH : 4425 SIZE : 6.75
PACKER DEPTH : SIZE :

DRILLING CON. : BEREDCO
MUD TYPE : CHEMICAL VISCOSITY : 45
WEIGHT : 9.1 WATER LOSS (CC) : 10
CHLORIDES (PPM) : 1800
JARS-MAKE : WTC SERIAL NUMBER : 419
DID WELL FLOW ? : - REVERSED OUT ? : -

DRILL COLLAR LENGTH : 636 FT I.D. inch : 2.20
WEIGHT PIPE LENGTH : 0 FT I.D. inch : 0.00
DRILL PIPE LENGTH : 3813 FT I.D. inch : 3.80
TEST TOOL LENGTH : 29 FT TOOL SIZE : 5.50
ANCHOR LENGTH : 20 FT ANCHOR SIZE : 5.50
SURFACE CHOKE SIZE : .75 IN BOTTOM CHOKE SIZE : .75
MAIN HOLE SIZE : 7.875 IN TOOL JOINT SIZE : 4.5 XH

BLOW COMMENT #1 : INITIAL FLOW-WEAK BUILDING BLOW- 3 1/2" IN BUCKET.
BLOW COMMENT #2 : FINAL FLOW-WEAK BUILDING BLOW- 6" IN BUCKET.
BLOW COMMENT #3 :
BLOW COMMENT #4 :

RECOVERED : 275 FT OF: WATER MUD
45% MUD-55% WATER

CHLORIDES: 55000 PPM

RESISTIVITY .2

Total Barrels Fluid = 1.29
Total Fluid Prod Rate = 41.37 BFPD
Indicated Wtr Rate = 24.82 BWPD

REMARK 1 :
REMARK 2 :
REMARK 3 :
REMARK 4 :

SET PACKER(S) : 12:35 AM

TIME STARTED OFF BOTTOM : 2:50 AM

WELL TEMPERATURE : 119

INITIAL HYDROSTATIC PRESSURE

(A) 2134

INITIAL FLOW PERIOD MIN: 15

(B) 50 PSI TO (C) : 50

INITIAL CLOSED IN PERIOD MIN: 30

(D) 1263

FINAL FLOW PERIOD MIN: 30

(E) 87 PSI TO (F) : 108

FINAL CLOSED IN PERIOD MIN: 60

(G) 1267

FINAL HYDROSTATIC PRESSURE

(H) 2124

WESTERN TESTING CO. INC.
WICHITA - KANSAS

Pressure Transient Report

COMPANY : BEREXCO INC.
RIG : HASKELL-KANSAS
FIELD : EUGENE DAVIS
WELL : #3-1
DATE : 1-15-88
GAUGE NO : 13759

OPERATIONAL COMMENTS

COMPANY : BEREXCO INC.
 WELL : #3-1
 GAUGE # : 13759
 DATE : 15/ 1/88

FIELD : EUGENE DAVIS
 JOB # : 12731
 DEPTH : 4498
 TEST :

DATA No.	REAL TIME HR:MN:SS	ELAPSE TIME DELTA HOURS	PRESSURE PSIG	TEMP DEG F	DELTA P Pi-P(i-1)
1	12:35: 0	0.000	50.000	119.00	0.000
2	12:39:59	0.083	50.000	119.00	0.000
3	12:45: 0	0.167	50.000	119.00	0.000
4	12:50: 0	0.250	50.000	119.00	0.000
5	12:53: 0	0.300	318.000	119.00	268.000
6	12:56: 0	0.350	1142.000	119.00	824.000
7	12:59: 0	0.400	1201.000	119.00	59.000
8	13: 2: 0	0.450	1225.000	119.00	24.000
9	13: 5: 0	0.500	1235.000	119.00	10.000
10	13: 8: 0	0.550	1243.000	119.00	8.000
11	13:11: 0	0.600	1252.000	119.00	9.000
12	13:14: 0	0.650	1257.000	119.00	5.000
13	13:17: 0	0.700	1259.000	119.00	2.000
14	13:20: 0	0.750	1263.000	119.00	4.000
15	13:21: 0	0.767	87.000	119.00	-1176.000
16	13:24:59	0.833	87.000	119.00	0.000
17	13:30: 0	0.917	87.000	119.00	0.000
18	13:35: 0	1.000	92.000	119.00	5.000
19	13:39:59	1.083	98.000	119.00	6.000
20	13:45: 0	1.167	105.000	119.00	7.000
21	13:50: 0	1.250	108.000	119.00	3.000
22	13:53: 0	1.300	639.000	119.00	531.000
23	13:56: 0	1.350	1147.000	119.00	508.000
24	13:59: 0	1.400	1192.000	119.00	45.000
25	14: 2: 0	1.450	1211.000	119.00	19.000
26	14: 5: 0	1.500	1223.000	119.00	12.000
27	14: 8: 0	1.550	1232.000	119.00	9.000
28	14:11: 0	1.600	1238.000	119.00	6.000
29	14:14: 0	1.650	1244.000	119.00	6.000
30	14:17: 0	1.700	1249.000	119.00	5.000
31	14:20: 0	1.750	1252.000	119.00	3.000
32	14:23: 0	1.800	1255.000	119.00	3.000
33	14:26: 0	1.850	1257.000	119.00	2.000
34	14:29: 0	1.900	1259.000	119.00	2.000
35	14:32: 0	1.950	1260.000	119.00	1.000
36	14:35: 0	2.000	1261.000	119.00	1.000
37	14:38: 0	2.050	1262.000	119.00	1.000
38	14:41: 0	2.100	1263.000	119.00	1.000
39	14:44: 0	2.150	1265.000	119.00	2.000
40	14:47: 0	2.200	1266.000	119.00	1.000
41	14:50: 0	2.250	1267.000	119.00	1.000

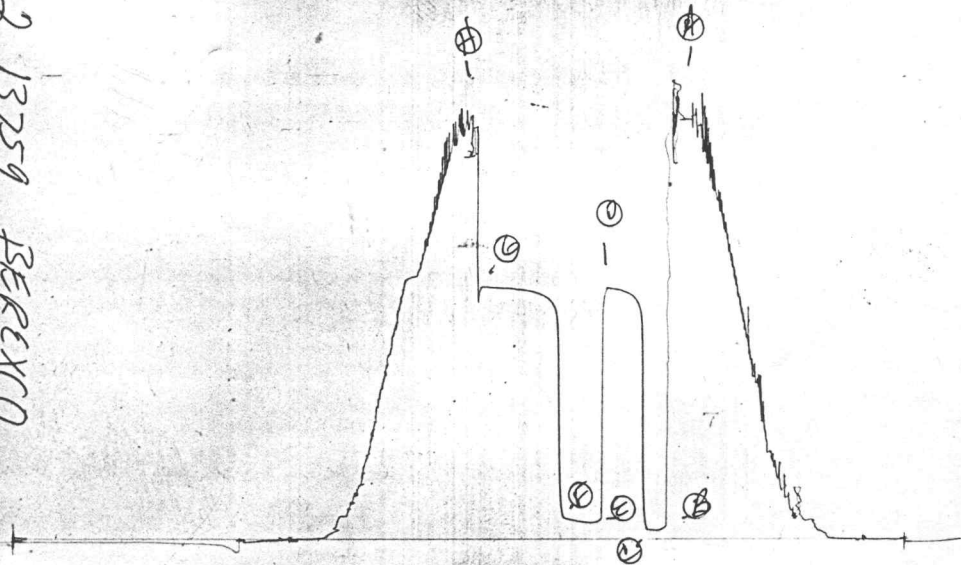
WESTERN TESTING CO. INC.

DST 2 13259 BERKCO

AK # 12731

14

1



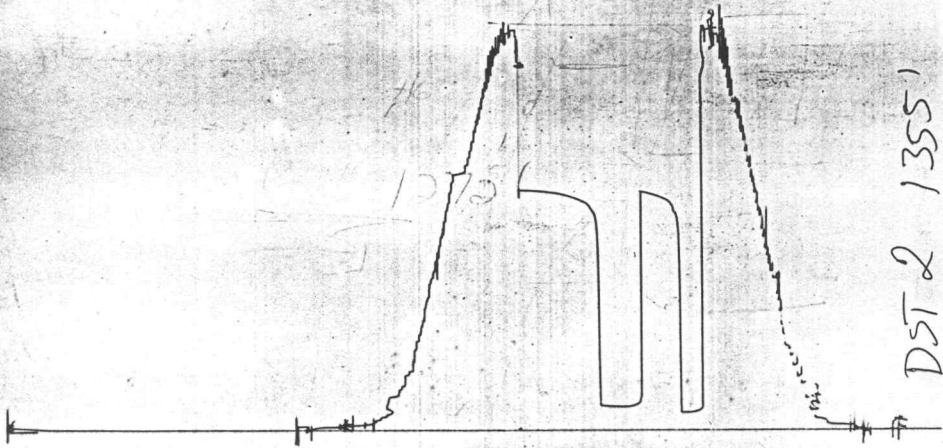
Site # 12731

0

14

BEREXCO

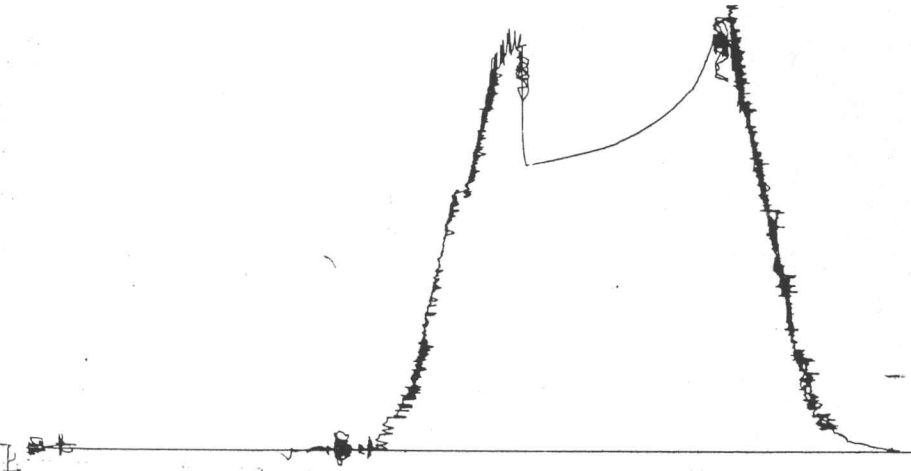
DST 2 1355



JK # 12731

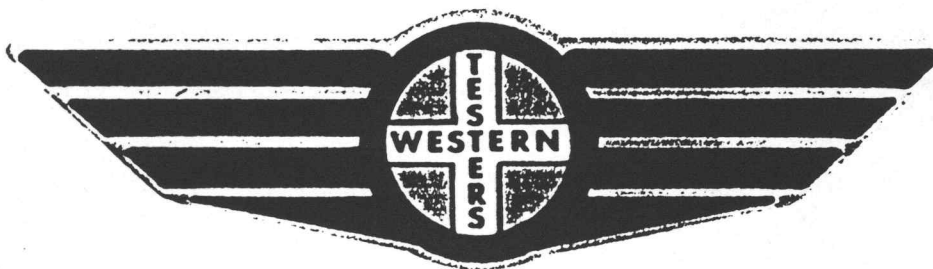
14

Below Straddle



DST 2 13403 BERXCO

FORMATION TEST REPORT



Home Office:

Wichita, Kansas 67201

P.O. Box 1599

Phone (316) 262-5861

COMPANY BEREXCO, INC. LEASE & WELL NO. EUGENE DAVIS #3-1 SEC. 1 TWP. 27S RGE. 33W TEST NO. 3 DATE 1-16-88

WESTERN TESTING CO. INC.
SUBSURFACE PRESSURE SURVEY

DATE : 1-16-88 TICKET : 12732
CUSTOMER : BEREXCO INC. LEASE : EUGENE DAVIS
WELL : #3-1 TEST: 3 GEOLOGIST : C. SPRADLIN
ELEVATION : 2920 FORMATION : KC B
SECTION : 1 TOWNSHIP : 27S
RANGE : 33W COUNTY : HASKELL STATE : KANSAS
GAUGE SN# : 13759 RANGE : 3900 CLOCK : 12

INTERVAL FROM : 4520 TO : 4535 TOTAL DEPTH : 4535
DEPTH OF SELECTIVE ZONE :
PACKER DEPTH : 4515 SIZE : 6.75
PACKER DEPTH : 4520 SIZE : 6.75
PACKER DEPTH : SIZE :
PACKER DEPTH : SIZE :

DRILLING CON. : BEREDCO
MUD TYPE : CHEMICAL VISCOSITY : 45
WEIGHT : 9.0 WATER LOSS (CC) : 6.5
CHLORIDES (PPM) : 1900
JARS-MAKE : WTC SERIAL NUMBER : 419
DID WELL FLOW ? : NO REVERSED OUT ? : NO

DRILL COLLAR LENGTH : 636 FT I.D. inch : 2.20
WEIGHT PIPE LENGTH : 0 FT I.D. inch : 0.00
DRILL PIPE LENGTH : 3858 FT I.D. inch : 3.80
TEST TOOL LENGTH : 29 FT TOOL SIZE : 5.50
ANCHOR LENGTH : 15 FT ANCHOR SIZE : 5.50
SURFACE CHOKE SIZE : .75 IN BOTTOM CHOKE SIZE : .75
MAIN HOLE SIZE : 7.875 IN TOOL JOINT SIZE : 4.5 XH

BLOW COMMENT #1 : INITIAL FLOW-OFF BOTTOM 10 SECONDS
BLOW COMMENT #2 : FINAL FLOW-OFF BOTTOM 5 MINUTES.
BLOW COMMENT #3 :
BLOW COMMENT #4 :

WESTERN TESTING CO. INC.
WICHITA - KANSAS

Pressure Transient Report

COMPANY : BEREXCO INC.
RIG : HASKELL-KANSAS
FIELD : EUGENE DAVIS
WELL : #3-1
DATE : 1-16-88
GAUGE NO : 13759

OPERATIONAL COMMENTS

COMPANY : BEREXCO INC.
WELL : #3-1
GAUGE.# : 13759
DATE : 16/ 1/88

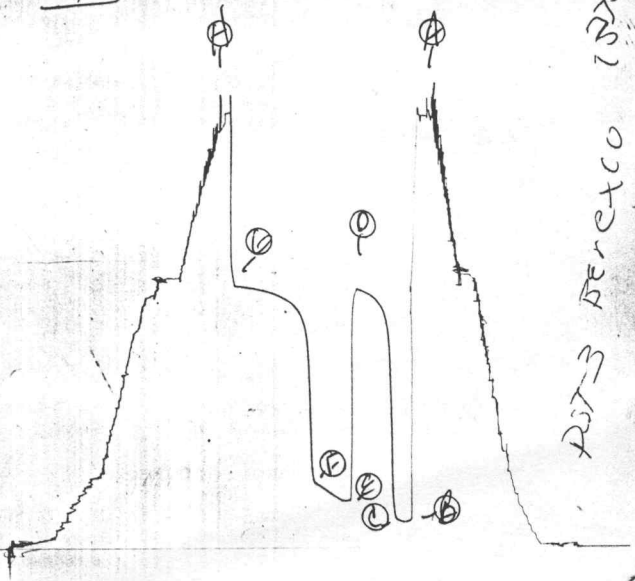
FIELD : EUGENE DAVIS
JOB # : 12732
DEPTH : 4535
TEST :

DATA No.	REAL TIME HR:MN:SS	ELAPSE TIME DELTA HOURS	PRESSURE PSIG	TEMP DEG F	DELTA P $P_i - P_{(i-1)}$
1	4:50:0	0.000	115.000	121.00	0.000
2	4:54:59	0.083	115.000	121.00	0.000
3	5:0:0	0.167	120.000	121.00	5.000
4	5:5:0	0.250	124.000	121.00	4.000
5	5:8:0	0.300	511.000	121.00	387.000
6	5:11:0	0.350	1040.000	121.00	529.000
7	5:14:0	0.400	1143.000	121.00	103.000
8	5:17:0	0.450	1195.000	121.00	52.000
9	5:20:0	0.500	1219.000	121.00	24.000
10	5:23:0	0.550	1240.000	121.00	21.000
11	5:26:0	0.600	1252.000	121.00	12.000
12	5:29:0	0.650	1260.000	121.00	8.000
13	5:32:0	0.700	1269.000	121.00	9.000
14	5:35:0	0.750	1278.000	121.00	9.000
15	5:36:0	0.767	215.000	121.00	-1063.000
16	5:39:59	0.833	215.000	121.00	0.000
17	5:45:0	0.917	230.000	121.00	15.000
18	5:50:0	1.000	254.000	121.00	24.000
19	5:54:59	1.083	276.000	121.00	22.000
20	6:0:0	1.167	296.000	121.00	20.000
21	6:5:0	1.250	305.000	121.00	9.000
22	6:8:0	1.300	618.000	121.00	313.000
23	6:11:0	1.350	1042.000	121.00	424.000
24	6:14:0	1.400	1122.000	121.00	80.000
25	6:17:0	1.450	1164.000	121.00	42.000
26	6:20:0	1.500	1191.000	121.00	27.000
27	6:23:0	1.550	1208.000	121.00	17.000
28	6:26:0	1.600	1221.000	121.00	13.000
29	6:29:0	1.650	1235.000	121.00	14.000
30	6:32:0	1.700	1243.000	121.00	8.000
31	6:35:0	1.750	1252.000	121.00	9.000
32	6:38:0	1.800	1257.000	121.00	5.000
33	6:41:0	1.850	1264.000	121.00	7.000
34	6:44:0	1.900	1268.000	121.00	4.000
35	6:47:0	1.950	1272.000	121.00	4.000
36	6:50:0	2.000	1278.000	121.00	6.000
37	6:53:0	2.050	1281.000	121.00	3.000
38	6:56:0	2.100	1284.000	121.00	3.000
39	6:59:0	2.150	1287.000	121.00	3.000
40	7:2:0	2.200	1290.000	121.00	3.000
41	7:5:0	2.250	1291.000	121.00	1.000

WESTERN TESTING CO. INC.

Alt # 12732

I



14

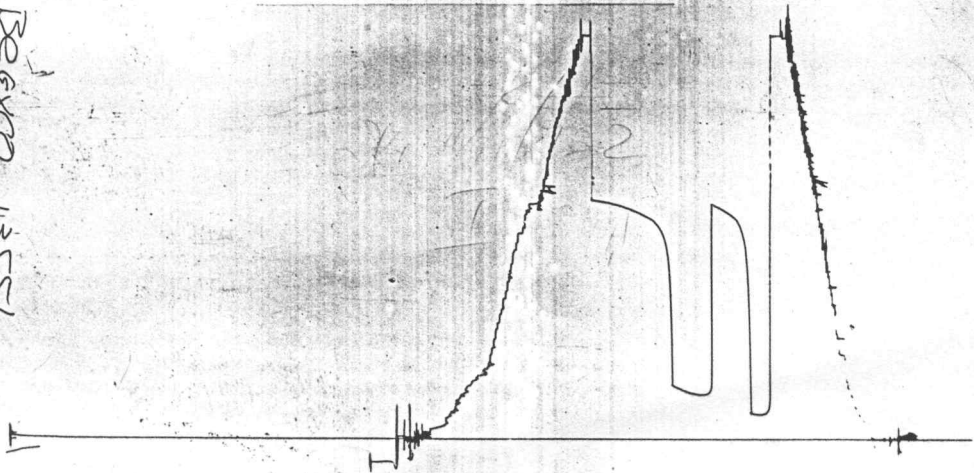
RST-3 BENCICO 12732

14

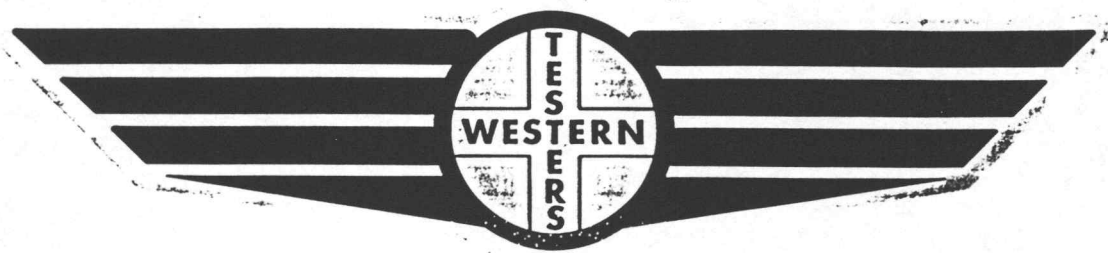
JK# 12732

0

DST 3 BECO 13551



FORMATION TEST REPORT



Home Office:

Wichita, Kansas 67201

P.O. Box 1599

Phone (316) 262-5861

COMPANY BEREXCO, INC. LEASE & WELL NO. EUGENE DAVIS #3-1 SEC. 1 TWP. 27SRGE. 33W TEST NO. 4 DATE 1-17-88

WESTERN TESTING CO. INC.
SUBSURFACE PRESSURE SURVEY

DATE : 1-17-88 TICKET : 12733
CUSTOMER : BEREXCO INC. LEASE : EUGENE DAVIS
WELL : #3-1 TEST: 4 GEOLOGIST : C. SPRADLIN
ELEVATION : 2920 GL FORMATION : -
SECTION : 1 TOWNSHIP : 27S
RANGE : 33W COUNTY : HASKELL STATE : KANSAS
GAUGE SN# : 13551 RANGE : 4150 CLOCK : 12

INTERVAL FROM : 4643 TO : 4667 TOTAL DEPTH : 4667
DEPTH OF SELECTIVE ZONE :
PACKER DEPTH : 4638 SIZE : 6.75
PACKER DEPTH : 4643 SIZE : 6.75
PACKER DEPTH : SIZE :
PACKER DEPTH : SIZE :

DRILLING CON. : BEREDCO
MUD TYPE : CHEMICAL VISCOSITY : 50
WEIGHT : 9.1 WATER LOSS (CC) : 6.0
CHLORIDES (PPM) : 1900
JARS-MAKE : WTC SERIAL NUMBER : 419
DID WELL FLOW ? : REVERSED OUT ? :

DRILL COLLAR LENGTH : 636 FT I.D. inch : 2.20
WEIGHT PIPE LENGTH : 0 FT I.D. inch : 0.00
DRILL PIPE LENGTH : 3978 FT I.D. inch : 3.80
TEST TOOL LENGTH : 29 FT TOOL SIZE : 5.50
ANCHOR LENGTH : 24 FT ANCHOR SIZE : 5.50
SURFACE CHOKE SIZE : .75 IN BOTTOM CHOKE SIZE : .75
MAIN HOLE SIZE : 7.875 IN TOOL JOINT SIZE : 4.5 XH

BLOW COMMENT #1 : INITIAL FLOW-STEADY BUILDING BLOW-OFF BOTTOM OF
BUCKET IN 10 MINUTES.
BLOW COMMENT #2 : FINAL FLOW-STEADY BUILDING BLOW-OFF BOTTOM 8 MINUTES
BLOW COMMENT #3 :
BLOW COMMENT #4 :

RECOVERED : 120 FT OF: OIL CUT GASSY MUD
60% MUD-20% OIL-20% GAS
RECOVERED : 90 FT OF: OIL CUT GASSY MUDDY WATER
60% MUD-20% WATER-5% OIL-15% GAS
RECOVERED : 90 FT OF: GASSY MUDDY WATER
20% MUD-60% WATER-5% OIL-15% GAS

CHLORIDES: 81000 PPM

RESISTIVITY: .1 @ 53 DEG.F.

Total Barrels Fluid = 1.41
Total Fluid Prod Rate = 45.13 BFPD
Indicated Oil Rate = 5.12 BOPD
Indicated Wtr Rate = 13.09 BWPD
Corrected Oil Rate = 15.66 BOPD
Corrected Wtr Rate = 40.06 BWPD

REMARK 1 :
REMARK 2 : RECOVERED 330 FEET OF GAS ABOVE FLUID.
REMARK 3 :
REMARK 4 :

SET PACKER(S) : 2:20 PM TIME STARTED OFF BOTTOM : 4:35 PM
WELL TEMPERATURE : 125
INITIAL HYDROSTATIC PRESSURE (A) 2267
INITIAL FLOW PERIOD MIN: 15 (B) 110 PSI TO (C) : 97
INITIAL CLOSED IN PERIOD MIN: 33 (D) 1133
FINAL FLOW PERIOD MIN: 30 (E) 149 PSI TO (F) : 149
FINAL CLOSED IN PERIOD MIN: 63 (G) 1155
FINAL HYDROSTATIC PRESSURE (H) 2256

WESTERN TESTING CO. INC.
WICHITA - KANSAS

Pressure Transient Report

COMPANY : BEREXCO INC.
RIG : HASKELL-KANSAS
FIELD : EUGENE DAVIS
WELL : #3-1
DATE : 1-17-88
GAUGE NO : 13551

OPERATIONAL COMMENTS

RECOVERED 330 FEET OF GAS ABOVE FLUID.

COMPANY : BEREXCO INC.
WELL : #3-1
GAUGE # : 13551
DATE : 17/ 1/88

FIELD : EUGENE DAVIS
JOB # : 12733
DEPTH : 4667
TEST :

DATA No.	REAL TIME HR:MN:SS	ELAPSE TIME DELTA HOURS	PRESSURE PSIG	TEMP DEG F	DELTA P Pi-P(i-1)
1	2:20:0	0.000	110.000	125.00	0.000
2	2:24:59	0.083	103.000	125.00	-7.000
3	2:30:0	0.167	97.000	125.00	-6.000
4	2:35:0	0.250	97.000	125.00	0.000
5	2:38:0	0.300	568.000	125.00	471.000
6	2:41:0	0.350	822.000	125.00	254.000
7	2:44:0	0.400	934.000	125.00	112.000
8	2:47:0	0.450	1004.000	125.00	70.000
9	2:50:0	0.500	1049.000	125.00	45.000
10	2:53:0	0.550	1078.000	125.00	29.000
11	2:56:0	0.600	1093.000	125.00	15.000
12	2:59:0	0.650	1103.000	125.00	10.000
13	3: 2: 0	0.700	1115.000	125.00	12.000
14	3: 5: 0	0.750	1125.000	125.00	10.000
15	3: 8: 0	0.800	1133.000	125.00	8.000
16	3: 9: 0	0.817	149.000	125.00	-984.000
17	3:12:59	0.883	149.000	125.00	0.000
18	3:18:0	0.967	149.000	125.00	0.000
19	3:23:0	1.050	149.000	125.00	0.000
20	3:27:59	1.133	149.000	125.00	0.000
21	3:33:0	1.217	149.000	125.00	0.000
22	3:38:0	1.300	149.000	125.00	0.000
23	3:40:59	1.350	552.000	125.00	403.000
24	3:44:0	1.400	786.000	125.00	234.000
25	3:46:59	1.450	889.000	125.00	103.000
26	3:50:0	1.500	975.000	125.00	86.000
27	3:53:0	1.550	1016.000	125.00	41.000
28	3:55:59	1.600	1035.000	125.00	19.000
29	3:59:0	1.650	1056.000	125.00	21.000
30	4: 1:59	1.700	1078.000	125.00	22.000
31	4: 5: 0	1.750	1091.000	125.00	13.000
32	4: 8: 0	1.800	1098.000	125.00	7.000
33	4:11:0	1.850	1107.000	125.00	9.000
34	4:14:0	1.900	1114.000	125.00	7.000
35	4:17:0	1.950	1121.000	125.00	7.000
36	4:20:0	2.000	1127.000	125.00	6.000
37	4:23:0	2.050	1133.000	125.00	6.000
38	4:26:0	2.100	1140.000	125.00	7.000
39	4:29:0	2.150	1144.000	125.00	4.000
40	4:31:59	2.200	1147.000	125.00	3.000
41	4:35:0	2.250	1150.000	125.00	3.000
42	4:38:0	2.300	1153.000	125.00	3.000
43	4:41:0	2.350	1155.000	125.00	2.000

WESTERN TESTING CO. INC.

KT 4733

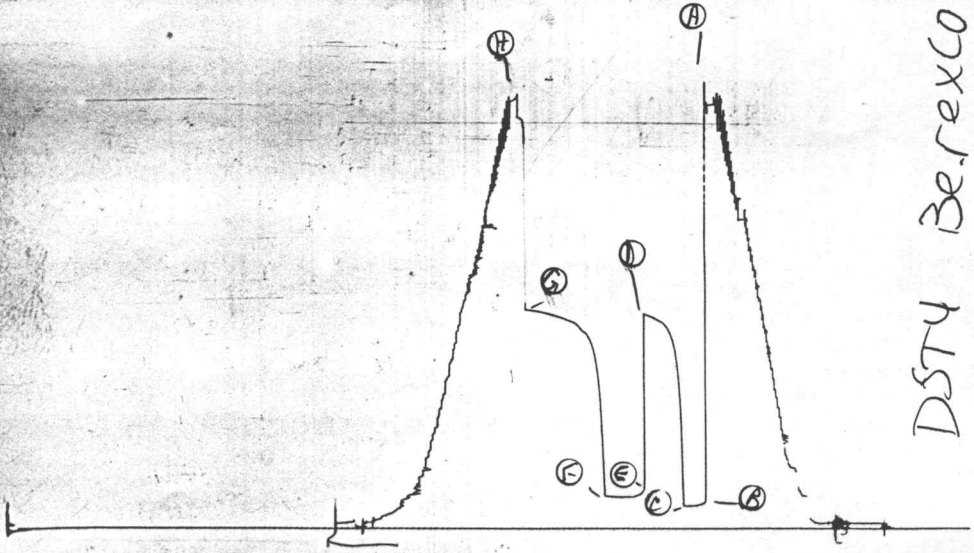
14

I

DST 4 BE-REXCO 13759

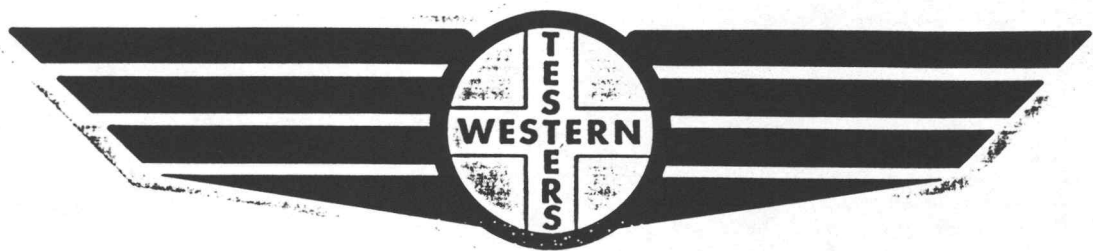
RA 12733 14

0



DSTY Berexco 1355-1

FORMATION TEST REPORT



Home Office:

Wichita, Kansas 67201

P.O. Box 1599

Phone (316) 262-5861

COMPANY BEREXCO, INC. LEASE & WELL NO. EUGENE DAVIS #3-1 SEC. 1 TWP. 27SRGE. 33W TEST NO. 5 DATE 1-17-88

WESTERN TESTING CO. INC.
SUBSURFACE PRESSURE SURVEY

DATE : 1-17-88 TICKET : 12734
CUSTOMER : BEREXCO INC. LEASE : EUGENE DAVIS
WELL : #3-1 TEST: 5 GEOLOGIST : C. SPRADLIN
ELEVATION : 2920 GL FORMATION : MARMATON
SECTION : 1 TOWNSHIP : 27S
RANGE : 33W COUNTY : HASKELL STATE : KANSAS
GAUGE SN# : 13759 RANGE : 3900 CLOCK : 12

INTERVAL FROM : 4587 TO : 4637 TOTAL DEPTH : 4667
DEPTH OF SELECTIVE ZONE :
PACKER DEPTH : 4582 SIZE : 6.75
PACKER DEPTH : 4587 SIZE : 6.75
PACKER DEPTH : 4637 SIZE : 6.75
PACKER DEPTH : SIZE :

DRILLING CON. : BEREDCO
MUD TYPE : CHEMICAL VISCOSITY : 50
WEIGHT : 9.1 WATER LOSS (CC) : 6.0
CHLORIDES (PPM) : 1900
JARS-MAKE : WTC SERIAL NUMBER : 419
DID WELL FLOW ? : REVERSED OUT ? :

DRILL COLLAR LENGTH : 606 FT I.D. inch : 2.20
WEIGHT PIPE LENGTH : 0 FT I.D. inch : 0.00
DRILL PIPE LENGTH : 3982 FT I.D. inch : 3.80
TEST TOOL LENGTH : 29 FT TOOL SIZE : 5.50
ANCHOR LENGTH : 50 FT ANCHOR SIZE : 5.50
SURFACE CHOKE SIZE : .75 IN BOTTOM CHOKE SIZE : .75
MAIN HOLE SIZE : 7.875 IN TOOL JOINT SIZE : 4.5 XH

BLOW COMMENT #1 : INITIAL FLOW-WEAK SURFACE BLOW THROUGHOUT.
BLOW COMMENT #2 : FINAL FLOW-BLOW DIED IN 1 MINUTE.
BLOW COMMENT #3 :
BLOW COMMENT #4 :

RECOVERED : 10 FT OF: MUD

Total Barrels Fluid = 0.05
Total Fluid Prod Rate = 1.50 BFPD
Indicated Wtr Rate = 0.15 BWPD

REMARK 1 :
REMARK 2 :
REMARK 3 :
REMARK 4 :

SET PACKER(S) : 9:55 PM

TIME STARTED OFF BOTTOM : 12:10 AM

WELL TEMPERATURE : 121

INITIAL HYDROSTATIC PRESSURE

(A) 2208

INITIAL FLOW PERIOD MIN: 15

(B) 33 PSI TO (C) : 33

INITIAL CLOSED IN PERIOD MIN: 30

(D) 43

FINAL FLOW PERIOD MIN: 30

(E) 29 PSI TO (F) : 29

FINAL CLOSED IN PERIOD MIN: 63

(G) 40

FINAL HYDROSTATIC PRESSURE

(H) 2171

WESTERN TESTING CO. INC.
WICHITA - KANSAS

Pressure Transient Report

COMPANY : BEREXCO INC.
RIG : HASKELL-KANSAS
FIELD : EUGENE DAVIS
WELL : #3-1
DATE : 1-17-88
GAUGE NO : 13759

OPERATIONAL COMMENTS

COMPANY : BEREXCO INC.
WELL : #3-1
GAUGE # : 13759
DATE : 17/ 1/88

FIELD : EUGENE DAVIS
JOB # : 12734
DEPTH : 4667
TEST :

DATA No.	REAL TIME HR:MN:SS	ELAPSE TIME DELTA HOURS	PRESSURE PSIG	TEMP DEG F	DELTA P $P_i - P_{(i-1)}$
1	9:55: 0	0.000	33.000	121.00	0.000
2	9:59:59	0.083	33.000	121.00	0.000
3	10: 5: 0	0.167	33.000	121.00	0.000
4	10:10: 0	0.250	33.000	121.00	0.000
5	10:13: 0	0.300	33.000	121.00	0.000
6	10:16: 0	0.350	33.000	121.00	0.000
7	10:19: 0	0.400	33.000	121.00	0.000
8	10:22: 0	0.450	33.000	121.00	0.000
9	10:25: 0	0.500	34.000	121.00	1.000
10	10:28: 0	0.550	35.000	121.00	1.000
11	10:31: 0	0.600	38.000	121.00	3.000
12	10:34: 0	0.650	39.000	121.00	1.000
13	10:37: 0	0.700	41.000	121.00	2.000
14	10:40: 0	0.750	43.000	121.00	2.000
15	10:41: 0	0.767	29.000	121.00	-14.000
16	10:44:59	0.833	29.000	121.00	0.000
17	10:50: 0	0.917	29.000	121.00	0.000
18	10:55: 0	1.000	29.000	121.00	0.000
19	10:59:59	1.083	29.000	121.00	0.000
20	11: 5: 0	1.167	29.000	121.00	0.000
21	11:10: 0	1.250	29.000	121.00	0.000
22	11:13: 0	1.300	29.000	121.00	0.000
23	11:16: 0	1.350	30.000	121.00	1.000
24	11:19: 0	1.400	30.000	121.00	0.000
25	11:22: 0	1.450	30.000	121.00	0.000
26	11:25: 0	1.500	31.000	121.00	1.000
27	11:28: 0	1.550	31.000	121.00	0.000
28	11:31: 0	1.600	31.000	121.00	0.000
29	11:34: 0	1.650	31.000	121.00	0.000
30	11:37: 0	1.700	32.000	121.00	1.000
31	11:40: 0	1.750	33.000	121.00	1.000
32	11:43: 0	1.800	34.000	121.00	1.000
33	11:46: 0	1.850	35.000	121.00	1.000
34	11:49: 0	1.900	36.000	121.00	1.000
35	11:52: 0	1.950	37.000	121.00	1.000
36	11:55: 0	2.000	38.000	121.00	1.000
37	11:58: 0	2.050	39.000	121.00	1.000
38	12: 1: 0	2.100	40.000	121.00	1.000
39	12: 4: 0	2.150	40.000	121.00	0.000
40	12: 7: 0	2.200	40.000	121.00	0.000
41	12:10: 0	2.250	40.000	121.00	0.000
42	12:13: 0	2.300	40.000	121.00	0.000

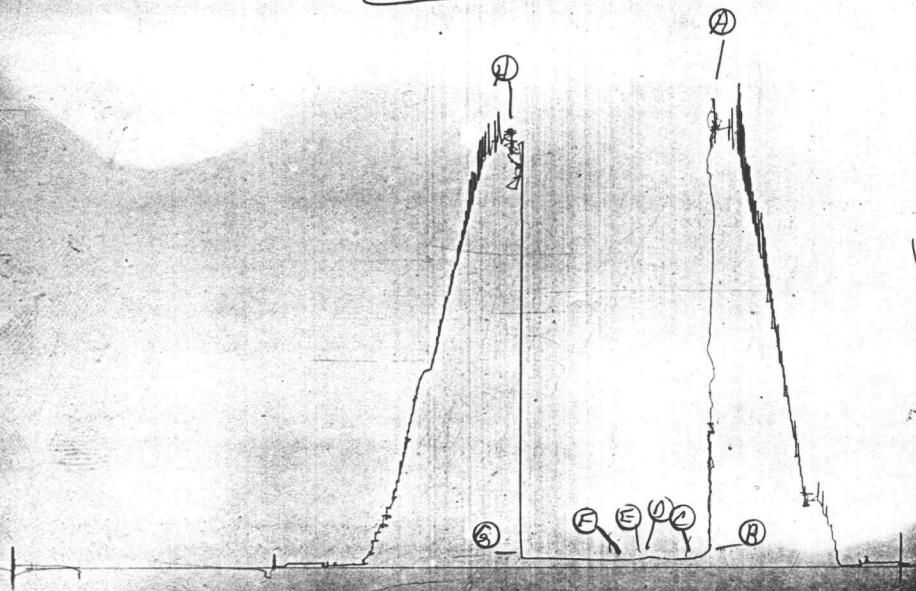
WESTERN TESTING CO. INC.

13759

HT 12734

14

I



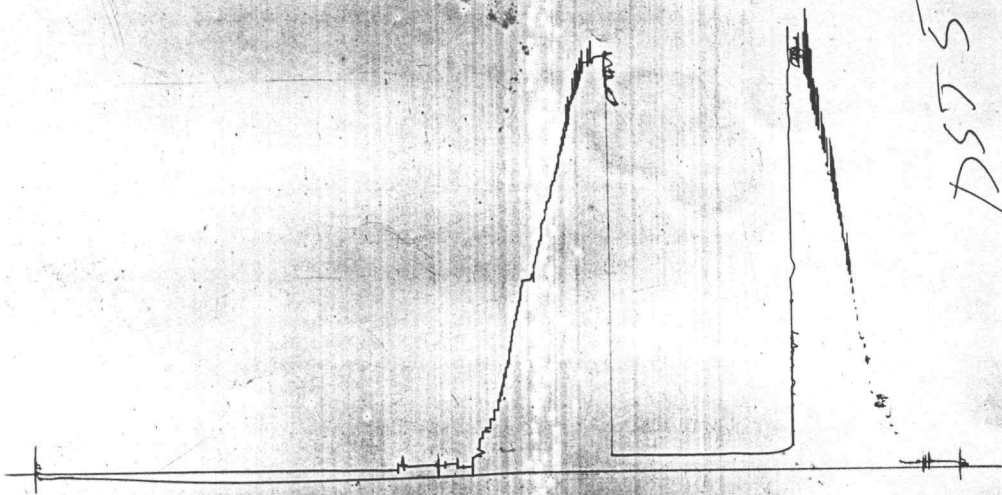
DST 5 13759

1351

KF 12734

K

O



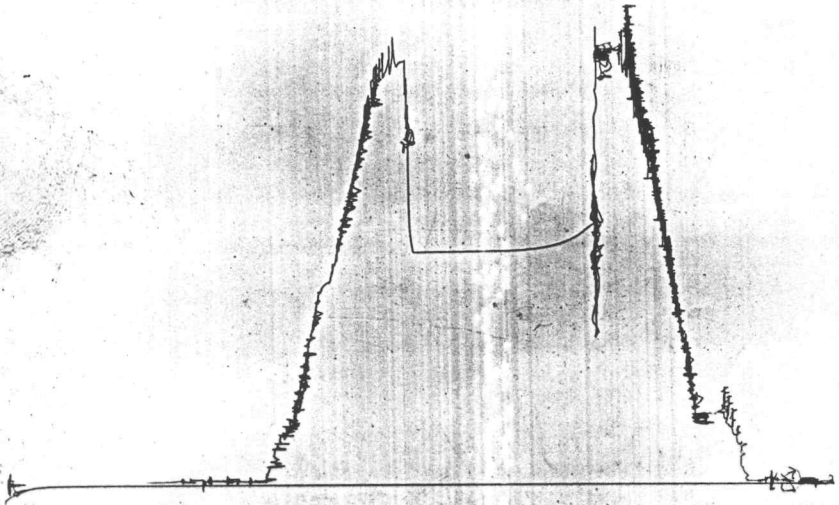
D575

TK 12734

Below Straddle

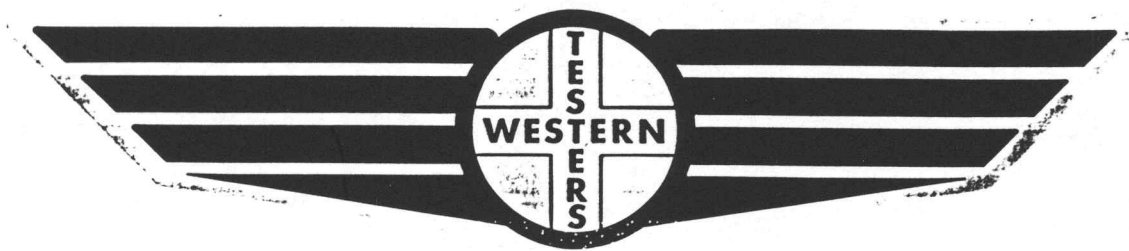
14

13403



DST 5

FORMATION TEST REPORT



Home Office:

Wichita, Kansas 67201

P.O. Box 1599

Phone (316) 262-5861

COMPANY BEREXCO, INC. LEASE & WELL NO. EUGENE DAVIS #3-1 SEC. 1 TWP. 27S RGE. 33W TEST NO. 6 DATE 1-18-88

WESTERN TESTING CO. INC.
SUBSURFACE PRESSURE SURVEY

DATE : 1-18-88 TICKET : 12735
CUSTOMER : BEREXCO INC. LEASE : EUGENE DAVIS
WELL : #3-1 TEST: 6 GEOLOGIST : C. SPRADLIN
ELEVATION : 2920 GL FORMATION : PAWNEE
SECTION : 1 TOWNSHIP : 27S
RANGE : 33W COUNTY : HASKELL STATE : KANSAS
GAUGE SN# : 13759 RANGE : 3900 CLOCK : 12

INTERVAL FROM : 4703 TO : 4737 TOTAL DEPTH : 4737
DEPTH OF SELECTIVE ZONE :
PACKER DEPTH : 4698 SIZE : 6.75
PACKER DEPTH : 4703 SIZE : 6.75
PACKER DEPTH : SIZE :
PACKER DEPTH : SIZE :

DRILLING CON. : BEREDCO
MUD TYPE : CHEMICAL VISCOSITY : 53
WEIGHT : 9.1 WATER LOSS (CC) : 6.0
CHLORIDES (PPM) : 1600
JARS-MAKE : WTC SERIAL NUMBER : 419
DID WELL FLOW ? : REVERSED OUT ? :

DRILL COLLAR LENGTH : 636 FT I.D. inch : 2.20
WEIGHT PIPE LENGTH : 0 FT I.D. inch : 0.00
DRILL PIPE LENGTH : 4038 FT I.D. inch : 3.80
TEST TOOL LENGTH : 29 FT TOOL SIZE : 5.50
ANCHOR LENGTH : 34 FT ANCHOR SIZE : 5.50
SURFACE CHOKE SIZE : .75 IN BOTTOM CHOKE SIZE : .75
MAIN HOLE SIZE : 7.875 IN TOOL JOINT SIZE : 4.5 XH

BLOW COMMENT #1 : INITIAL FLOW-GOOD BUILDING BLOW OFF BOTTOM 8 MINUTES.
BLOW COMMENT #2 : FINAL FLOW-STRONG BLOW OFF BOTTOM 1 MINUTE
BLOW COMMENT #3 :
BLOW COMMENT #4 :

RECOVERED : 20 FT OF: MUD
RECOVERED : 90 FT OF: OIL CUT GASSY MUD
30% MUD-25% OIL-45% GAS

Total Barrels Fluid = 0.52
Total Fluid Prod Rate = 16.55 BFPD
Indicated Oil Rate = 3.46 BOPD
Indicated Wtr Rate = 0.75 BWPD

REMARK 1 :
REMARK 2 :
REMARK 3 :
REMARK 4 :

SET PACKER(S) : 4:10 PM
WELL TEMPERATURE : 119
INITIAL HYDROSTATIC PRESSURE (A) 2254
INITIAL FLOW PERIOD MIN: 15 (B) 79 PSI TO (C) : 48
INITIAL CLOSED IN PERIOD MIN: 27 (D) 1286
FINAL FLOW PERIOD MIN: 30 (E) 73 PSI TO (F) : 73
FINAL CLOSED IN PERIOD MIN: 57 (G) 1338
FINAL HYDROSTATIC PRESSURE (H) 2187

WESTERN TESTING CO. INC.
WICHITA - KANSAS

Pressure Transient Report

COMPANY : BEREXCO INC.
RIG : HASKELL-KANSAS
FIELD : EUGENE DAVIS
WELL : #3-1
DATE : 1-18-88
GAUGE NO : 13759

OPERATIONAL COMMENTS

COMPANY : BEREXCO INC.
WELL : #3-1
GAUGE # : 13759
DATE : 18/ 1/88

FIELD : EUGENE DAVIS
JOB # : 12735
DEPTH : 4737
TEST :

DATA No.	REAL TIME HR:MN:SS	ELAPSE TIME DELTA HOURS	PRESSURE PSIG	TEMP DEG F	DELTA P Pi-P(i-1)
1	4:10:0	0.000	79.000	119.00	0.000
2	4:14:59	0.083	58.000	119.00	-21.000
3	4:20:0	0.167	49.000	119.00	-9.000
4	4:25:0	0.250	48.000	119.00	-1.000
5	4:28:0	0.300	91.000	119.00	43.000
6	4:31:0	0.350	202.000	119.00	111.000
7	4:34:0	0.400	375.000	119.00	173.000
8	4:37:0	0.450	720.000	119.00	345.000
9	4:40:0	0.500	1053.000	119.00	333.000
10	4:43:0	0.550	1193.000	119.00	140.000
11	4:46:0	0.600	1235.000	119.00	42.000
12	4:49:0	0.650	1265.000	119.00	30.000
13	4:52:0	0.700	1286.000	119.00	21.000
14	4:53:0	0.717	73.000	119.00	-1213.000
15	4:56:59	0.783	73.000	119.00	0.000
16	5: 2: 0	0.867	73.000	119.00	0.000
17	5: 7: 0	0.950	73.000	119.00	0.000
18	5:11:59	1.033	73.000	119.00	0.000
19	5:17:0	1.117	73.000	119.00	0.000
20	5:22:0	1.200	73.000	119.00	0.000
21	5:25:0	1.250	170.000	119.00	97.000
22	5:28:0	1.300	290.000	119.00	120.000
23	5:31:0	1.350	446.000	119.00	156.000
24	5:34:0	1.400	684.000	119.00	238.000
25	5:37:0	1.450	986.000	119.00	302.000
26	5:40:0	1.500	1118.000	119.00	132.000
27	5:43:0	1.550	1185.000	119.00	67.000
28	5:46:0	1.600	1223.000	119.00	38.000
29	5:49:0	1.650	1247.000	119.00	24.000
30	5:52:0	1.700	1261.000	119.00	14.000
31	5:55:0	1.750	1279.000	119.00	18.000
32	5:58:0	1.800	1293.000	119.00	14.000
33	6: 1: 0	1.850	1301.000	119.00	8.000
34	6: 4: 0	1.900	1310.000	119.00	9.000
35	6: 7: 0	1.950	1317.000	119.00	7.000
36	6:10:0	2.000	1324.000	119.00	7.000
37	6:13:0	2.050	1329.000	119.00	5.000
38	6:16:0	2.100	1336.000	119.00	7.000
39	6:19:0	2.150	1338.000	119.00	2.000

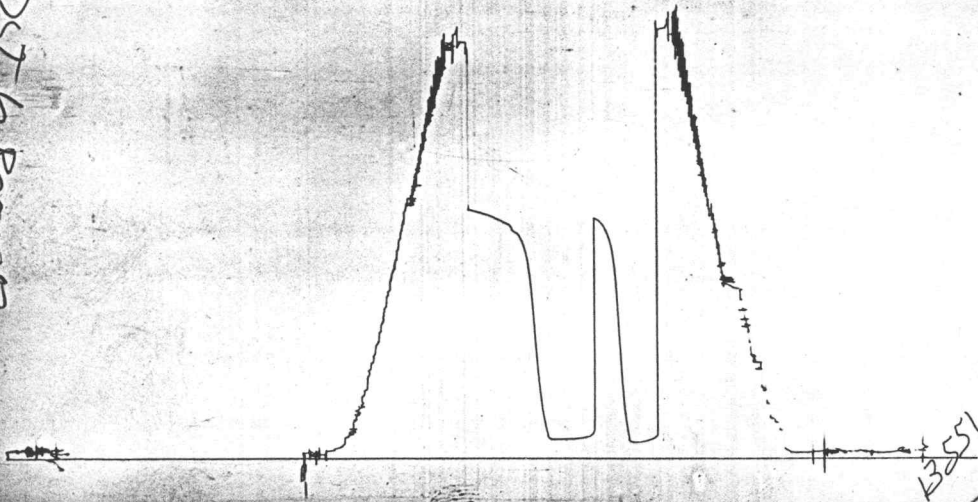
WESTERN TESTING CO. INC.

KT 12735

14
11

O

DST 6 Berwick



3551