

TRILOBITE
TESTING, INC.

RECEIVED
MAY 02 2002
KCC WICHITA

DRILL STEM TEST REPORT

Prepared for

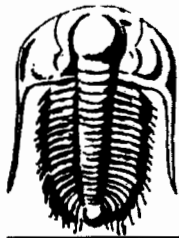
Gemini Oil Company
Philtower Bldg. 427 S. Boston Ave. #320
Tulsa, OK 74103

Miles "A" #8
30 27s 10w
Kingman co KS

ORIGINAL

Trilobite Testing, Inc
PO Box 362 - Hays, Kansas - 67601
ph: 785-625-4778 fax: 785-625-5620
e-mail: trilobite@eaglecom.net

ORIGINAL



TRILOBITE TESTING, INC.

DRILL STEM TEST REPORT

RECEIVED
MAY 02 2002
KCC WICHITA

Well name#:	Miles "A" #8	Date:	11/18/2001
Location#:	30 27s 10w	Ticket #:	14117
		DST#	1

General Informaion:

Formation:	Herington/Kri	Test Type:	Conventional	BHT:	
Interval:	1510-1550	Tester:	John Schmidt	OIL API:	
Total Depth:	1550	Elevation:	1670	ft(KB)	H2O Salinity:
Hole Diameter:	7 7/8"		1659	ft(CF)	
Start Data:	11/18/2001	Tool Weight:	2100	Mud Type:	Chemical
Start Time:		Weight Set on Packers:	2000	Mud Weight:	8.7
Time tool opened:		Weight to Pull Loose:		Viscosity:	35
Time Off Btm:		Initial String Weight:		Water Loss:	28
End Date:		Final String Weight:		Resistivity:	
End Time:		Drill Pipe Length:		Salinity:	30000
		Drill Collar Length:			

Test Comment:
IF - Started making water going in hole with tool.
ABORT TEST

Recovery	
Length(ft):	Description:

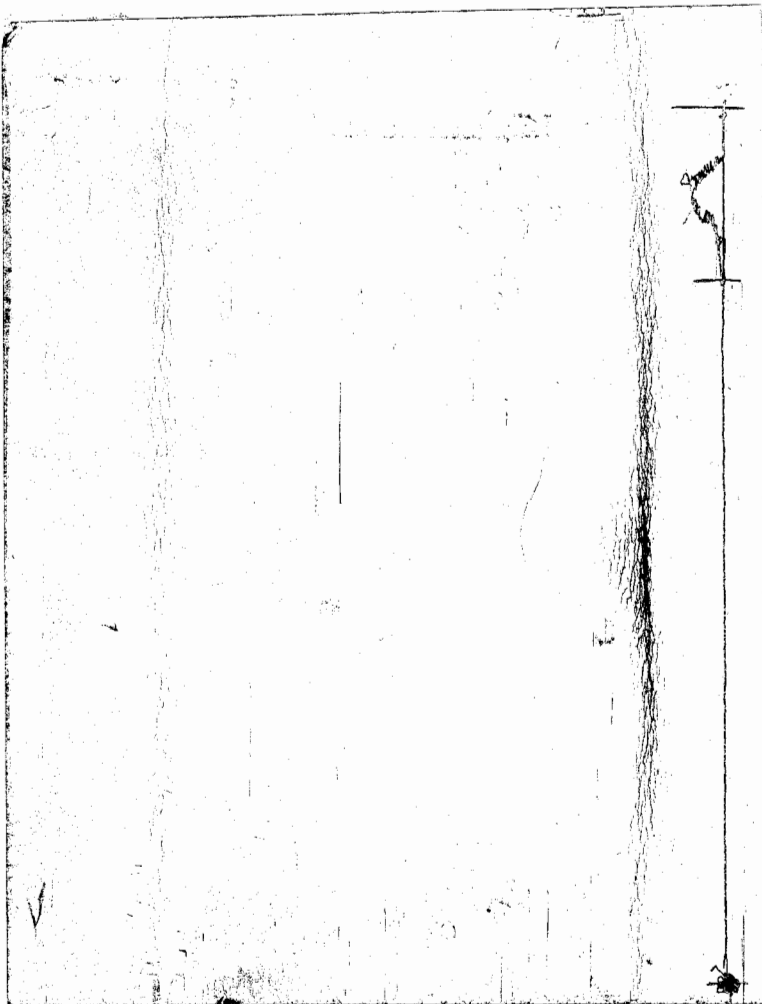
Gas Volume Report

Recorder #:	11084	Open	Min:	Ins. Of water	Orifice	CF/D
Pressure Summary:	Time:(min)			PSIG	size	
Initial Hydro-static:						
Open to Flow (1):						
Shut-in (1):						
End Shut-in (1):						
Open to Flow (2):						
Shut-in (2):						
End Shut-in (2):						
Final Hydro-static:						

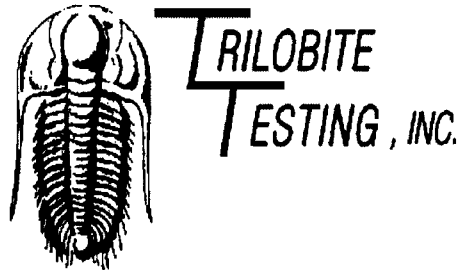
RECEIVED
MAY 02 2002
KCC WICHITA

CHART PAGE

This is a photocopy of the actual AK-1 recorder chart



RECEIVED
MAY 02 2002
KCC WICHITA



DRILL STEM TEST REPORT

Prepared For: **Gemini Oil Company**

Philtower bldg.427
S.Boston Ave.#320
Tulsa,OK 74103

ATTN: Allen G.Siemens

30-27s-10w

Miles "A"#8

Start Date: 2001.11.19 @ 08:14:22

End Date: 2001.11.19 @ 13:33:37

Job Ticket #: 14118 DST #: 2

Trilobite Testing, Inc
PO Box 362 Hays, KS 67601
ph: 785-625-4778 fax: 785-625-5620



TRILOBITE TESTING, INC.

DRILL STEM TEST REPORT

Gemini Oil Company
 Philtower bldg.427
 S.Boston Ave.#320
 Tulsa,OK 74103
 ATTN: Allen G.Siemens

Miles "A"#8
30-27s-10w
 Job Ticket: 14118 **DST#: 2**
 Test Start: 2001.11.19 @ 08:14:22

GENERAL INFORMATION:

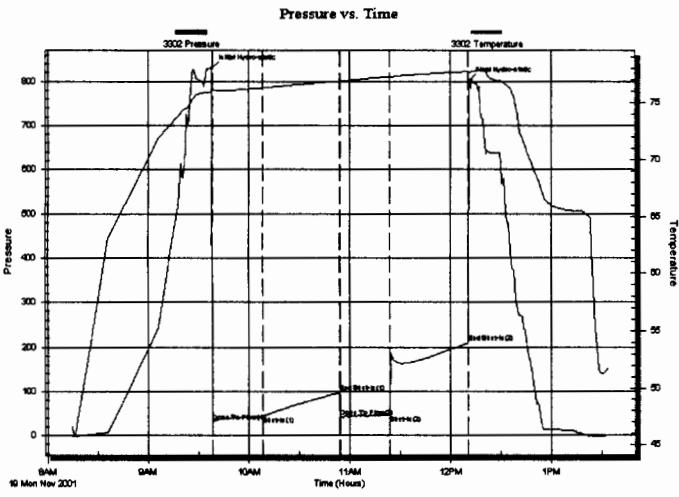
Formation: **Herrington/Cryder**
 Deviated: **No Whipstock:** ft (KB)
 Test Type: **Conventional Bottom Hole**
 Time Tool Opened: 09:38:22 Tester: **Darren L.Amerine**
 Time Test Ended: 13:33:37 Unit No: **19**
 Interval: **1510.00 ft (KB) To 1550.00 ft (KB) (TVD)** Reference Elevations: **1670.00 ft (KB)**
 Total Depth: **1550.00 ft (KB) (TVD)** **1659.00 ft (CF)**
 Hole Diameter: **7.88 inches** Hole Condition: **Poor** KB to GR/CF: **11.00 ft**

Serial #: 3302

Inside

Press@RunDepth: **45.69 psig @ 1518.00 ft (KB)** Capacity: **7000.00 psig**
 Start Date: **2001.11.19** End Date: **2001.11.19** Last Calib.: **2001.11.19**
 Start Time: **08:14:24** End Time: **13:33:37** Time On Btrn: **2001.11.19 @ 09:38:07**
 Time Off Btrn: **2001.11.19 @ 12:11:07**

TEST COMMENT: IF:Weak blow built to 4" in H2O bucket.
 IS:Bled down n for 2 mins.no blow back.
 FF:Weak blow built to 4" in H2O bucket.
 FS:Bled down n for 20 mins.no blow back.



PRESSURE SUMMARY

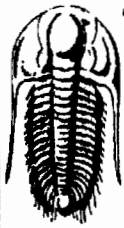
Time (Min.)	Pressure (psig)	Temp (deg F)	Annotation
0	829.41	75.97	Initial Hydro-static
1	31.53	76.07	Open To Flow (1)
31	43.48	76.32	Shut-In(1)
76	96.82	76.89	End Shut-In(1)
77	40.48	76.92	Open To Flow (2)
106	45.69	77.30	Shut-In(2)
153	209.87	77.76	End Shut-In(2)
153	801.53	77.66	Final Hydro-static

Recovery

Length (ft)	Description	Volume (bbl)
50.00	Gas cut mud 8%gas 92%mud	0.25

Gas Rates

Choke (inches)	Pressure (psig)	Gas Rate (Mcf/d)



**TRILOBITE
TESTING, INC.**

DRILL STEM TEST REPORT

TOOL DIAGRAM

Gemini Oil Company

Miles "A"#8

Philtower bldg.427
S.Boston Ave.#320
Tulsa,OK 74103

30-27s-10w

Job Ticket: 14118

DST#: 2

ATTN: Allen G.Siemens

Test Start: 2001.11.19 @ 08:14:22

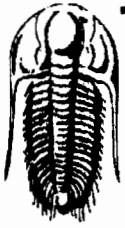
Tool Information

Drill Pipe:	Length: 998.47 ft	Diameter: 3.80 inches	Volume: 14.01 bbl	Tool Weight: 2100.00 lb
Heavy Wt. Pipe:	Length: 0.00 ft	Diameter: 0.00 inches	Volume: 0.00 bbl	Weight set on Packer: 20000.00 lb
Drill Collar:	Length: 497.53 ft	Diameter: 2.25 inches	Volume: 2.45 bbl	Weight to Pull Loose: 55000.00 lb
			<u>Total Volume: 16.46 bbl</u>	Tool Chased 0.00 ft
Drill Pipe Above KB:	9.00 ft			String Weight: Initial 51000.00 lb
Depth to Top Packer:	1510.00 ft			Final 51000.00 lb
Depth to Bottom Packer:	ft			
Interval between Packers:	40.00 ft			
Tool Length:	63.00 ft			
Number of Packers:	2	Diameter: 6.75 inches		
Tool Comments:				

RECEIVED
MAY 02 2002
KCC WICHITA

Tool Description	Length (ft)	Serial No.	Position	Depth (ft)	Accum. Lengths
C.O. Sub	1.00			1488.00	
S.I. Tool	5.00			1493.00	
HMV	5.00			1498.00	
Jars	5.00			1503.00	
Safety Joint	2.00			1505.00	
Packer	5.00			1510.00	23.00 Bottom Of Top Packer
Stubb	1.00			1511.00	
Anchor	7.00			1518.00	
Recorder	0.00	3302	Inside	1518.00	
Blank Spacing	29.00			1547.00	
Recorder	0.00	13769	Outside	1547.00	
Bullnose	3.00			1550.00	40.00 Anchor Tool

Total Tool Length: 63.00



**TRILOBITE
TESTING, INC**

DRILL STEM TEST REPORT

FLUID SUMMARY

Gemini Oil Company
Philtow er bldg.427
S.Boston Ave.#320
Tulsa,OK 74103
ATTN: Allen G.Siemens

Miles "A" #8
30-27s-10w
Job Ticket: 14118 **DST#: 2**
Test Start: 2001.11.19 @ 08:14:22

Mud and Cushion Information

Mud Type: Gel Chem	Cushion Type:	Oil API:	deg API
Mud Weight: 10.00 lb/gal	Cushion Length: ft	Water Salinity:	ppm
Viscosity: 37.00 sec/qt	Cushion Volume: bbl		
Water Loss: 55.77 in ³	Gas Cushion Type:		
Resistivity: 0.20 ohm.m	Gas Cushion Pressure: psig		
Salinity: 44000.00 ppm			
Filter Cake: 0.32 inches			

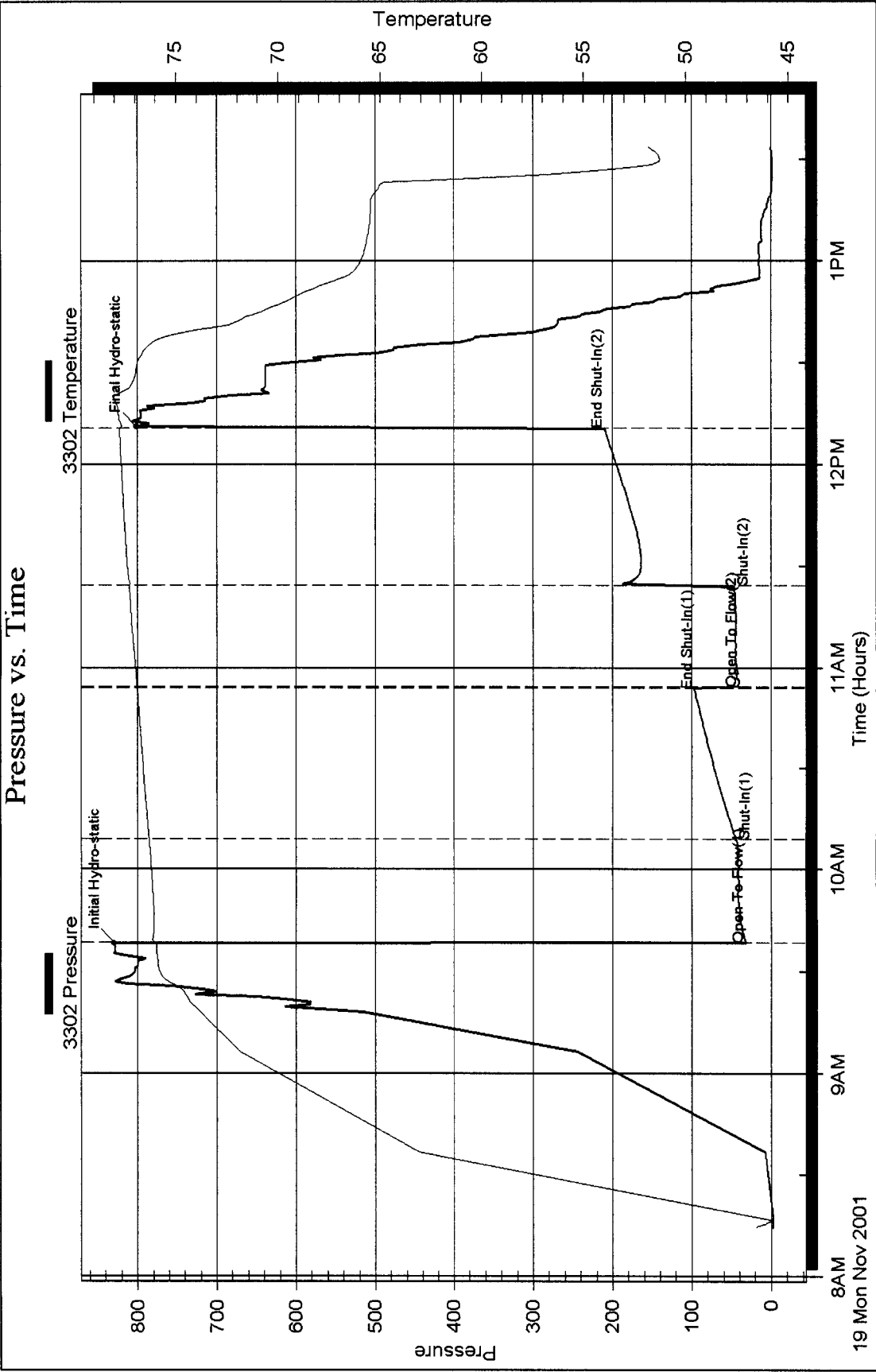
Recovery Information

Recovery Table

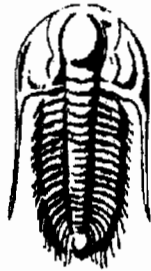
Length ft	Description	Volume bbl
50.00	Gas cut mud 8%gas 92%mud	0.246

Total Length: 50.00 ft Total Volume: 0.246 bbl
 Num Fluid Samples: 0 Num Gas Bombs: 0 Serial #:
 Laboratory Name: Caraway Laboratory Location: Liberal KS
 Recovery Comments:

Pressure vs. Time



RECEIVED
MAY 02 2002
KCC WICHITA



**TRILOBITE
TESTING, INC.**

DRILL STEM TEST REPORT

Prepared For: **Gemini Oil Company**

Philtower bldg.427
S.Boston Ave.#320
Tulsa,OK 74103

ATTN: Allen G.Siemens

30-27s-10w

Miles "A"#8

Start Date: 2001.11.19 @ 18:24:29

End Date: 2001.11.19 @ 23:40:14

Job Ticket #: 14119 DST #: 3

**RECEIVED
MAY 02 2002
KCC WICHITA**

Gemini Oil Company

Miles "A"#8

30-27s-10w

DST # 3

Winfield

2001.11.19

Trilobite Testing, Inc

PO Box 362 Hays, KS 67601

ph: 785-625-4778 fax: 785-625-5620



**TRILOBITE
TESTING, INC.**

DRILL STEM TEST REPORT

Gemini Oil Company
Philtow er bldg.427
S.Boston Ave.#320
Tulsa,OK 74103
ATTN: Allen G.Siemens

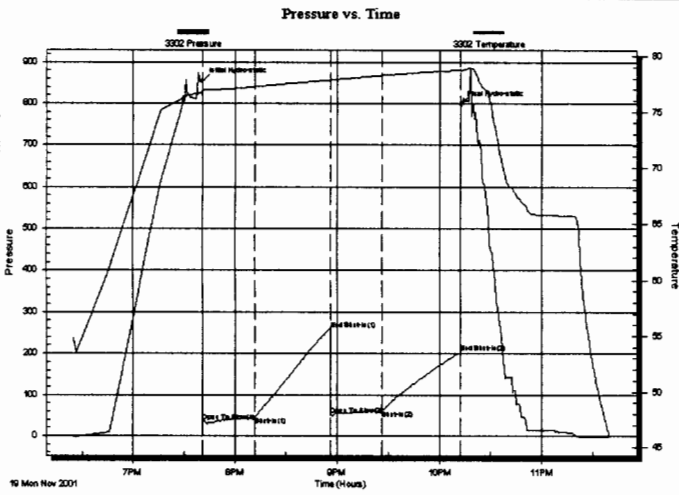
Miles "A"#8
30-27s-10w
Job Ticket: 14119 **DST#: 3**
Test Start: 2001.11.19 @ 18:24:29

GENERAL INFORMATION:

Formation: **Winfield**
Deviated: No Whipstock: ft (KB)
Time Tool Opened: 19:41:14
Time Test Ended: 23:40:14
Interval: **1558.00 ft (KB) To 1610.00 ft (KB) (TVD)**
Total Depth: 1610.00 ft (KB) (TVD)
Hole Diameter: 7.88 inches Hole Condition: Fair
Test Type: Conventional Bottom Hole
Tester: Darren L.Amerine
Unit No: 19
Reference Elevations: 1670.00 ft (KB)
1659.00 ft (CF)
KB to GR/CF: 11.00 ft

Serial #: 3302 **Inside**
Press@RunDepth: 61.19 psig @ 1559.00 ft (KB) Capacity: 7000.00 psig
Start Date: 2001.11.19 End Date: 2001.11.19 Last Calib.: 2001.11.19
Start Time: 18:24:31 End Time: 23:40:14 Time On Btm: 2001.11.19 @ 19:40:59
Time Off Btm: 2001.11.19 @ 22:12:29

TEST COMMENT: F:Fair blow built to b.o.b in 8 mins.
IS:Bled down n for 10 mins.no blow back.
FF:Fair blow built to 9" in H2O bucket.
FS:Bled down n for 5 mins. no blow back.



PRESSURE SUMMARY

Time (Min.)	Pressure (psig)	Temp (deg F)	Annotation
0	853.30	76.75	Initial Hydro-static
1	35.31	76.76	Open To Flow (1)
31	46.39	77.22	Shut-In(1)
75	258.40	77.83	End Shut-In(1)
76	49.65	77.88	Open To Flow (2)
106	61.19	78.26	Shut-In(2)
152	203.50	78.74	End Shut-In(2)
152	797.01	78.80	Final Hydro-static

Recovery

Length (ft)	Description	Volume (bbl)
120.00	01 - Gas	0.59
60.00	SGCM 2%gas 98%mud	0.30

Gas Rates

	Choke (inches)	Pressure (psig)	Gas Rate (Mcf/d)



**TRILOBITE
TESTING, INC**

DRILL STEM TEST REPORT

TOOL DIAGRAM

Gemini Oil Company
Philtow er bldg.427
S.Boston Ave.#320
Tulsa,OK 74103
ATTN: Allen G.Siemens

Miles "A"#8
30-27s-10w
Job Ticket: 14119 **DST#: 3**
Test Start: 2001.11.19 @ 18:24:29

Tool Information

Drill Pipe:	Length: 1309.30 ft	Diameter: 3.80 inches	Volume: 18.37 bbl	Tool Weight: 2100.00 lb
Heavy Wt. Pipe:	Length: 0.00 ft	Diameter: 0.00 inches	Volume: 0.00 bbl	Weight set on Packer: 20000.00 lb
Drill Collar:	Length: 248.70 ft	Diameter: 2.25 inches	Volume: 1.22 bbl	Weight to Pull Loose: 45000.00 lb
			<u>Total Volume: 19.59 bbl</u>	Tool Chased 0.00 ft
Drill Pipe Above KB:	28.00 ft			String Weight: Initial 40000.00 lb
Depth to Top Packer:	1558.00 ft			Final 40000.00 lb
Depth to Bottom Packer:	ft			
Interval betw een Packers:	52.00 ft			
Tool Length:	80.00 ft			
Number of Packers:	2	Diameter: 6.75 inches		
Tool Comments:				

RECEIVED
MAY 02 2002
KCC WICHITA

Tool Description	Length (ft)	Serial No.	Position	Depth (ft)	Accum. Lengths
C.O. Sub	1.00			1531.00	
S.I. Tool	5.00			1536.00	
HMV	5.00			1541.00	
Jars	5.00			1546.00	
Safety Joint	2.00			1548.00	
Packer	5.00			1553.00	28.00 Bottom Of Top Packer
Packer	5.00			1558.00	
Stubb	1.00			1559.00	
Recorder	0.00	3302	Inside	1559.00	
Anchor	17.00			1576.00	
Recorder	0.00	13769	Outside	1576.00	
Blank Spacing	31.00			1607.00	
Bullnose	3.00			1610.00	52.00 Bottom Packers & Anchor

Total Tool Length: 80.00



**TRILOBITE
TESTING, INC.**

DRILL STEM TEST REPORT

FLUID SUMMARY

Gemini Oil Company

Miles "A" #8

Philtow er bldg.427

30-27s-10w

S.Boston Ave.#320

Job Ticket: 14119

DST#: 3

Tulsa,OK 74103

ATTN: Allen G.Siemens

Test Start: 2001.11.19 @ 18:24:29

Mud and Cushion Information

Mud Type: Gel Chem

Cushion Type:

Oil API:

deg API

Mud Weight: 10.00 lb/gal

Cushion Length:

ft

Water Salinity:

ppm

Viscosity: 38.00 sec/qt

Cushion Volume:

bbf

Water Loss: 55.80 in³

Gas Cushion Type:

Resistivity: 0.20 ohm.m

Gas Cushion Pressure:

psig

Salinity: 44000.00 ppm

Filter Cake: 0.32 inches

Recovery Information

Recovery Table

Length ft	Description	Volume bbf
120.00	01 - Gas	0.590
60.00	SGCM 2%gas 98%mud	0.295

Total Length: 180.00 ft Total Volume: 0.885 bbf

Num Fluid Samples: 0

Num Gas Bombs: 0

Serial #:

Laboratory Name: Caraway

Laboratory Location: Liberal KS

Recovery Comments:

Serial #: 3302

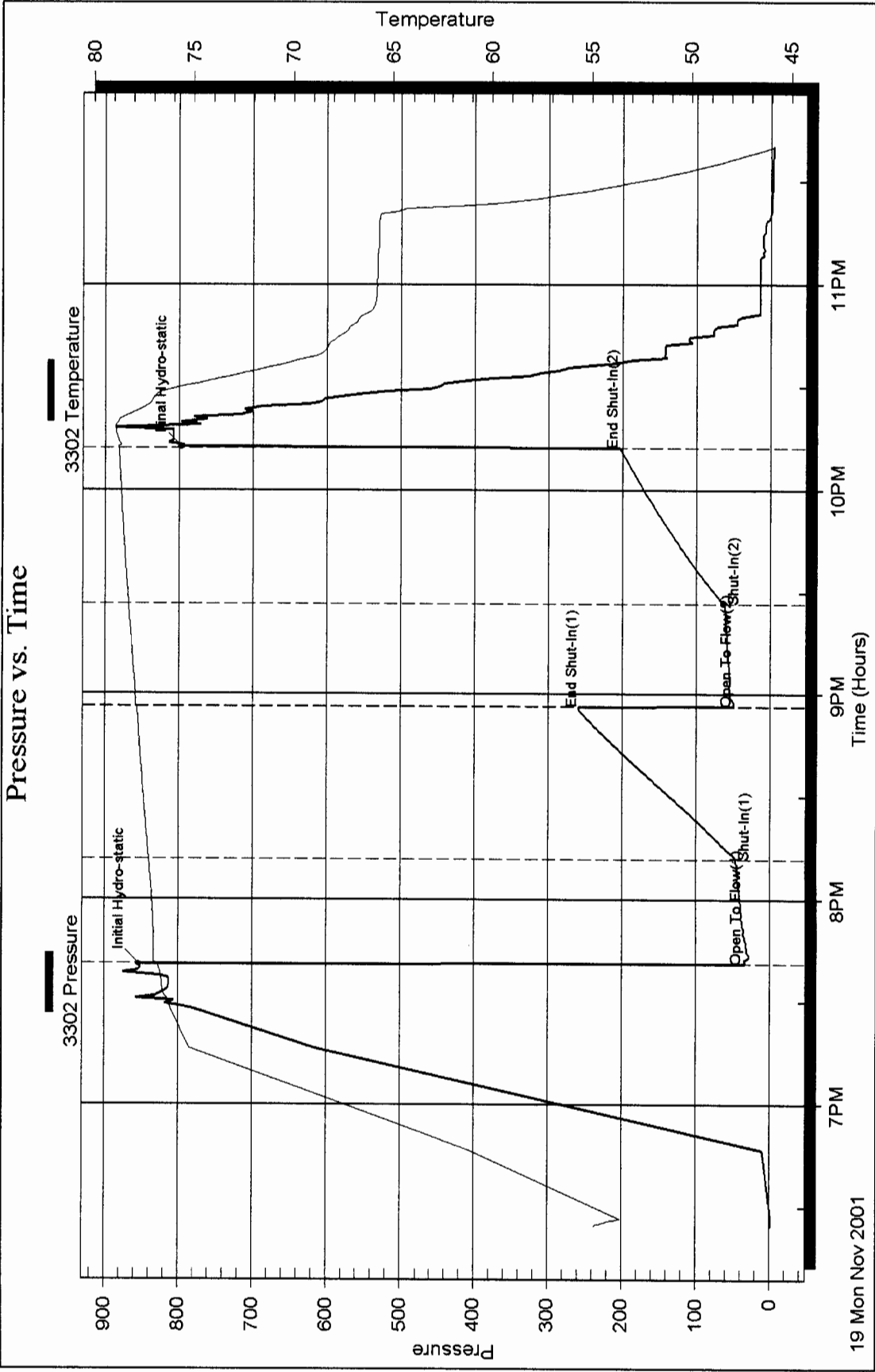
Inside

Gemini Oil Company

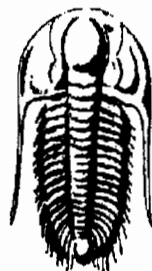
30-27s-10w

DST Test Number: 3

Pressure vs. Time



RECEIVED
MAY 02 2002
KCC WICHITA



**TRILOBITE
TESTING, INC.**

DRILL STEM TEST REPORT

Prepared For: **Gemini Oil Company**

Philtower bldg.427
S.Boston Ave.#320
Tulsa,OK 74103

ATTN: Allen G.Siemens

30-27s-10w

Miles "A"#8

Start Date: 2001.11.20 @ 02:45:57

End Date: 2001.11.20 @ 06:32:57

Job Ticket #: 14120 DST #: 4

RECEIVED
MAY 02 2002
KCC WICHITA

Gemini Oil Company

Miles "A"#8

30-27s-10w

DST # 4

Towanda

2001.11.20

Trilobite Testing, Inc
PO Box 362 Hays, KS 67601
ph: 785-625-4778 fax: 785-625-5620



**TRILOBITE
TESTING, INC.**

DRILL STEM TEST REPORT

TOOL DIAGRAM

Gemini Oil Company

Miles "A"#8

Philtow er bldg.427
S.Boston Ave.#320
Tulsa,OK 74103
ATTN: Allen G.Siemens

30-27s-10w

Job Ticket: 14120

DST#: 4

Test Start: 2001.11.20 @ 02:45:57

Tool Information

Drill Pipe:	Length: 1368.30 ft	Diameter: 3.80 inches	Volume: 19.19 bbl	Tool Weight: 2100.00 lb
Heavy Wt. Pipe:	Length: 0.00 ft	Diameter: 0.00 inches	Volume: 0.00 bbl	Weight set on Packer: 20000.00 lb
Drill Collar:	Length: 248.70 ft	Diameter: 2.25 inches	Volume: 1.22 bbl	Weight to Pull Loose: 55000.00 lb
			<u>Total Volume: 20.41 bbl</u>	Tool Chased 0.00 ft
Drill Pipe Above KB:	23.00 ft			String Weight: Initial 40000.00 lb
Depth to Top Packer:	1622.00 ft			Final 40000.00 lb
Depth to Bottom Packer:	ft			
Interval between Packers:	28.00 ft			
Tool Length:	56.00 ft			
Number of Packers:	2	Diameter: 6.75 inches		
Tool Comments:				

**RECEIVED
MAY 02 2002
KCC WICHITA**

Tool Description	Length (ft)	Serial No.	Position	Depth (ft)	Accum. Lengths
C.O. Sub	1.00			1595.00	
S.I. Tool	5.00			1600.00	
HMV	5.00			1605.00	
Jars	5.00			1610.00	
Safety Joint	2.00			1612.00	
Packer	5.00			1617.00	28.00 Bottom Of Top Packer
Packer	5.00			1622.00	
Stubb	1.00			1623.00	
Recorder	0.00	3302	Inside	1623.00	
Anchor	24.00			1647.00	
Recorder	0.00	13769	Outside	1647.00	
Bullnose	3.00			1650.00	28.00 Bottom Packers & Anchor

Total Tool Length: 56.00



**TRILOBITE
TESTING, INC.**

DRILL STEM TEST REPORT

FLUID SUMMARY

Gemini Oil Company

Miles "A" #8

Philtower bldg.427
S.Boston Ave.#320
Tulsa,OK 74103

30-27s-10w

Job Ticket: 14120

DST#: 4

ATTN: Allen G.Siemens

Test Start: 2001.11.20 @ 02:45:57

Mud and Cushion Information

Mud Type: Gel Chem

Cushion Type:

Oil API:

deg API

Mud Weight: 10.00 lb/gal

Cushion Length:

ft

Water Salinity:

ppm

Viscosity: 37.00 sec/qt

Cushion Volume:

bbl

Water Loss: 55.83 in³

Gas Cushion Type:

Resistivity: 0.20 ohm.m

Gas Cushion Pressure:

psig

Salinity: 44000.00 ppm

Filter Cake: 0.32 inches

Recovery Information

Recovery Table

Length ft	Description	Volume bbl
15.00	100 - Mud	0.074

Total Length: 15.00 ft Total Volume: 0.074 bbl

Num Fluid Samples: 0

Num Gas Bombs: 0

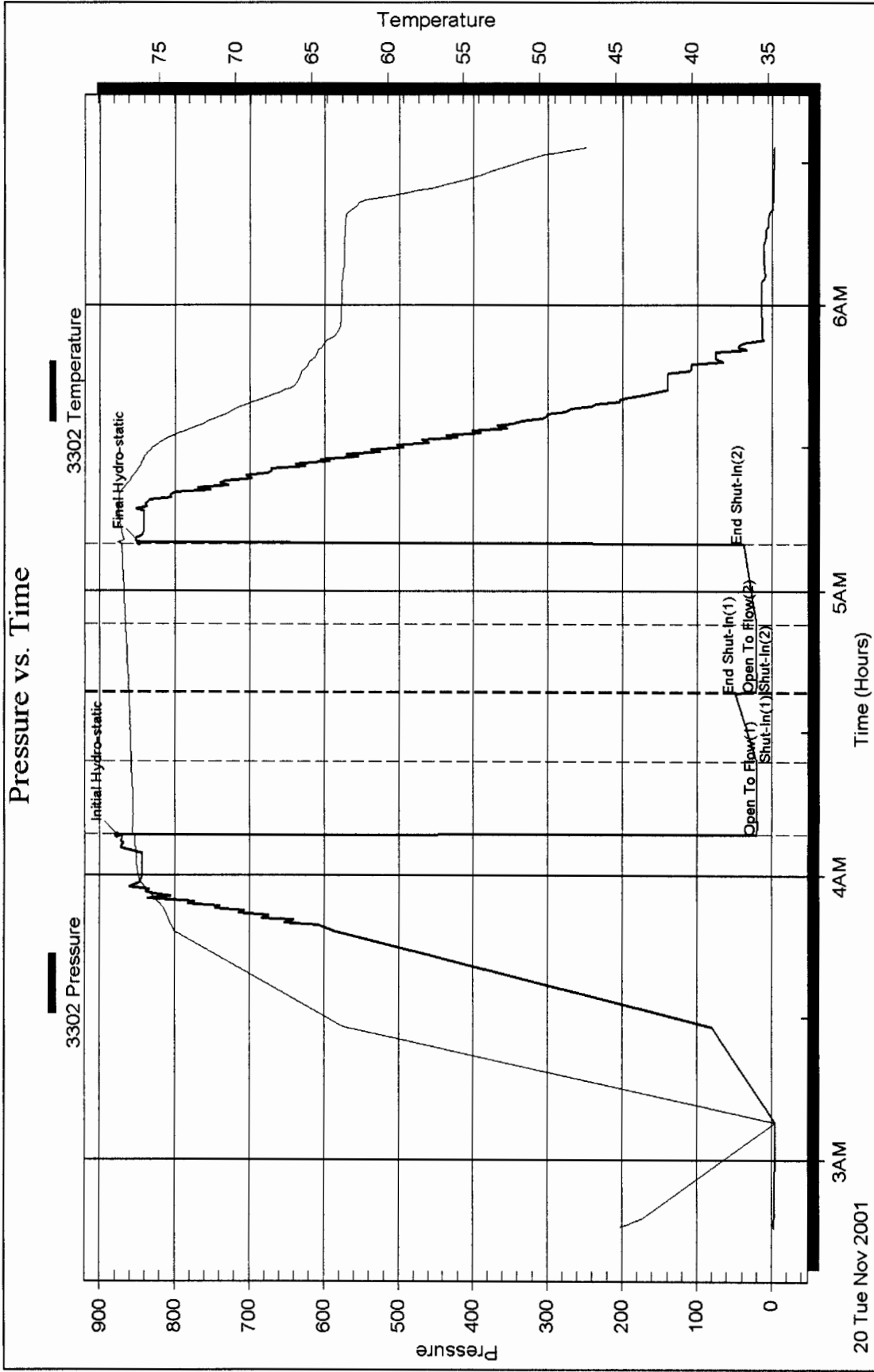
Serial #:

Laboratory Name: Caraway

Laboratory Location: Liberal KS

Recovery Comments:

Pressure vs. Time



RECEIVED
MAY 02 2002
KCC WICHITA



**TRILOBITE
TESTING, INC.**

DRILL STEM TEST REPORT

Prepared For: **Gemini Oil Company**

Philtower bldg.427
S.Boston Ave.#320
Tulsa,OK 74103

ATTN: Allen G.Siemens

30-27s-10w

Miles "A"#8

Start Date: 2001.11.20 @ 16:30:33

End Date: 2001.11.20 @ 21:20:18

Job Ticket #: 14121 DST #: 5

**RECEIVED
MAY 02 2002
KCC WICHITA**

Gemini Oil Company

Miles "A"#8

30-27s-10w

DST # 5

Wreford

2001.11.20

Trilobite Testing, Inc

PO Box 362 Hays, KS 67601

ph: 785-625-4778 fax: 785-625-5620



TRILOBITE TESTING, INC.

DRILL STEM TEST REPORT

Gemini Oil Company
 Philtow er bldg.427
 S.Boston Ave.#320
 Tulsa,OK 74103
 ATTN: Allen G.Siemens

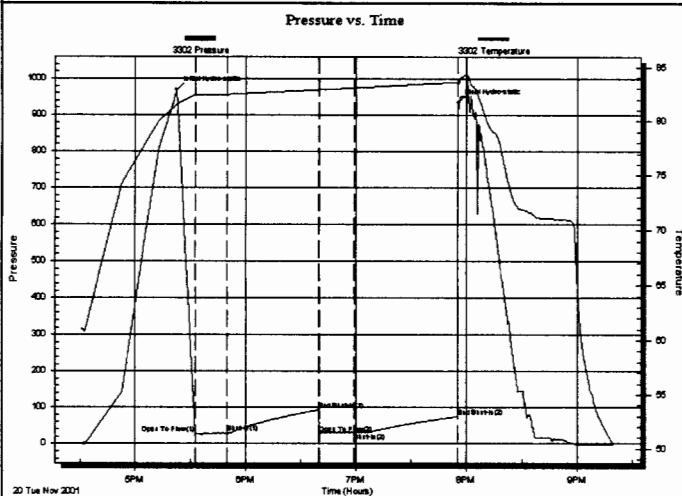
Miles "A" #8
30-27s-10w
 Job Ticket: 14121 **DST#: 5**
 Test Start: 2001.11.20 @ 16:30:33

GENERAL INFORMATION:

Formation: **Wreford**
 Deviated: No Whipstock: ft (KB)
 Test Type: Conventional Bottom Hole
 Time Tool Opened: 17:32:33 Tester: Darren L.Amerine
 Time Test Ended: 21:20:18 Unit No: 19
 Interval: **1815.00 ft (KB) To 1835.00 ft (KB) (TVD)** Reference Elevations: 1670.00 ft (KB)
 Total Depth: 1835.00 ft (KB) (TVD) 1659.00 ft (CF)
 Hole Diameter: 7.88 inches Hole Condition: Poor KB to GR/CF: 11.00 ft

Serial #: 3302 Inside
 Press@RunDepth: 30.89 psig @ 1816.00 ft (KB) Capacity: 7000.00 psig
 Start Date: 2001.11.20 End Date: 2001.11.20 Last Calib.: 2001.11.20
 Start Time: 16:30:35 End Time: 21:20:18 Time On Btm: 2001.11.20 @ 17:22:33
 Time Off Btm: 2001.11.20 @ 19:55:18

TEST COMMENT: F:Strong blow b.o.b in 20 sec.
 St:Bled down n for 5 mins.no blow back
 FF:Fair blow built to 9" in H2O bucket.
 FS:Bled down n for 5 mins.no blow back.



PRESSURE SUMMARY

Time (Min.)	Pressure (psig)	Temp (deg F)	Annotation
0	968.50	81.58	Initial Hydro-static
10	28.34	82.38	Open To Flow (1)
28	29.26	82.46	Shut-In(1)
77	93.25	82.88	End Shut-In(1)
78	27.28	82.90	Open To Flow (2)
97	30.89	83.05	Shut-In(2)
153	73.64	83.57	End Shut-In(2)
153	935.02	83.40	Final Hydro-static

Recovery

Length (ft)	Description	Volume (bbl)
20.00	SG&WCM 4%gas 8%w ater 88%mud	0.10

Gas Rates

	Choke (inches)	Pressure (psig)	Gas Rate (Mcf/d)



**TRILOBITE
TESTING, INC.**

DRILL STEM TEST REPORT

TOOL DIAGRAM

Gemini Oil Company

Miles "A"#8

Philtow er bldg.427
S.Boston Ave.#320
Tulsa,OK 74103

30-27s-10w

Job Ticket: 14121

DST#: 5

ATTN: Allen G.Siemens

Test Start: 2001.11.20 @ 16:30:33

Tool Information

Drill Pipe:	Length: 1555.30 ft	Diameter: 3.80 inches	Volume: 21.82 bbl	Tool Weight: 2100.00 lb
Heavy Wt. Pipe:	Length: 0.00 ft	Diameter: 0.00 inches	Volume: 0.00 bbl	Weight set on Packer: 20000.00 lb
Drill Collar:	Length: 248.70 ft	Diameter: 2.25 inches	Volume: 1.22 bbl	Weight to Pull Loose: 55000.00 lb
			<u>Total Volume: 23.04 bbl</u>	Tool Chased 0.00 ft
Drill Pipe Above KB:	17.00 ft			String Weight: Initial 40000.00 lb
Depth to Top Packer:	1815.00 ft			Final 45000.00 lb
Depth to Bottom Packer:	ft			
Interval between Packers:	20.00 ft			
Tool Length:	48.00 ft			
Number of Packers:	2	Diameter: 6.75 inches		
Tool Comments:				

RECEIVED
MAY 02 2002
KCC WICHITA

Tool Description	Length (ft)	Serial No.	Position	Depth (ft)	Accum. Lengths
------------------	-------------	------------	----------	------------	----------------

C.O. Sub	1.00			1788.00	
S.I. Tool	5.00			1793.00	
HMV	5.00			1798.00	
Jars	5.00			1803.00	
Safety Joint	2.00			1805.00	
Packer	5.00			1810.00	28.00 Bottom Of Top Packer
Packer	5.00			1815.00	
Stubb	1.00			1816.00	
Recorder	0.00	3302	Inside	1816.00	
Anchor	16.00			1832.00	
Recorder	0.00	13769	Outside	1832.00	
Bullnose	3.00			1835.00	20.00 Bottom Packers & Anchor

Total Tool Length: 48.00



**TRILOBITE
TESTING, INC**

DRILL STEM TEST REPORT

FLUID SUMMARY

Gemini Oil Company

Miles "A" #8

Philtow er bldg.427
S.Boston Ave.#320
Tulsa,OK 74103

30-27s-10w

Job Ticket: 14121

DST#: 5

ATTN: Allen G.Siemens

Test Start: 2001.11.20 @ 16:30:33

Mud and Cushion Information

Mud Type: Gel Chem

Cushion Type:

Oil API:

deg API

Mud Weight: 10.00 lb/gal

Cushion Length:

ft

Water Salinity:

45000 ppm

Viscosity: 35.00 sec/qt

Cushion Volume:

bbl

Water Loss: in³

Gas Cushion Type:

Resistivity: 0.20 ohm.m

Gas Cushion Pressure:

psig

Salinity: 47000.00 ppm

Filter Cake: inches

Recovery Information

Recovery Table

Length ft	Description	Volume bbl
20.00	SG&WCM 4%gas 8%w ater 88%mud	0.098

Total Length: 20.00 ft Total Volume: 0.098 bbl

Num Fluid Samples: 0

Num Gas Bombs: 0

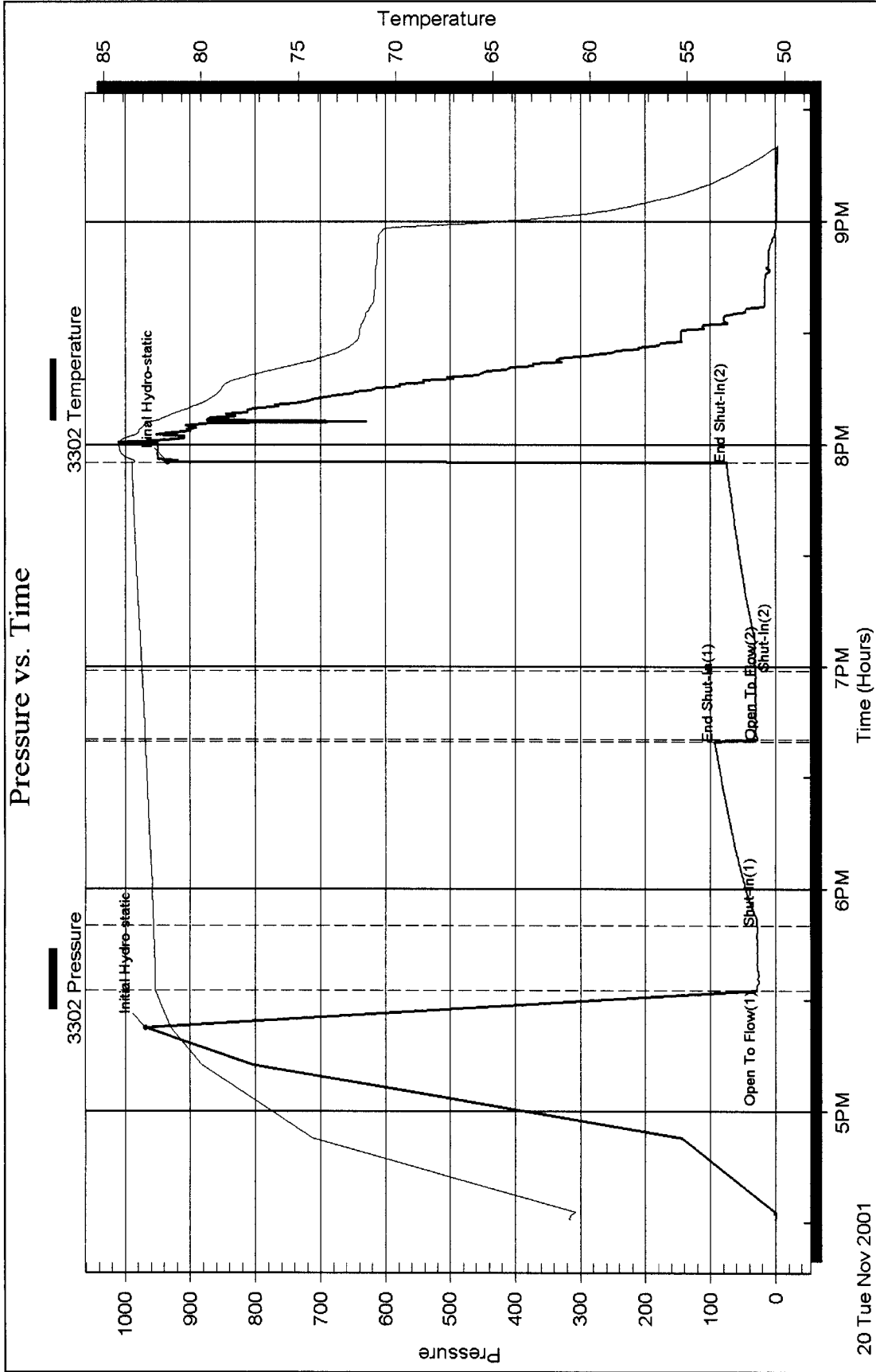
Serial #:

Laboratory Name:

Laboratory Location:

Recovery Comments: RW .2@60F

Pressure vs. Time



RECEIVED
MAY 02 2002
KCC WICHITA



TRILOBITE
TESTING, INC.

DRILL STEM TEST REPORT

Prepared For: **Gemini Oil Company**

Philtower bldg.427
S.Boston Ave.#320
Tulsa,OK 74103

ATTN: Allen G.Siemens

30-27s-10w

Miles "A"#8

Start Date: 2001.11.22 @ 17:50:50

End Date: 2001.11.22 @ 23:37:50

Job Ticket #: 14122 DST #: 6

RECEIVED
MAY 02 2002
KCC WICHITA

Gemini Oil Company

Miles "A"#8

30-27s-10w

DST # 6

Tarkio

2001.11.22

Trilobite Testing, Inc
PO Box 362 Hays, KS 67601
ph: 785-625-4778 fax: 785-625-5620



**TRILOBITE
TESTING, INC**

DRILL STEM TEST REPORT

Gemini Oil Company
Philtow er bldg.427
S.Boston Ave.#320
Tulsa,OK 74103
ATTN: Allen G.Siemens

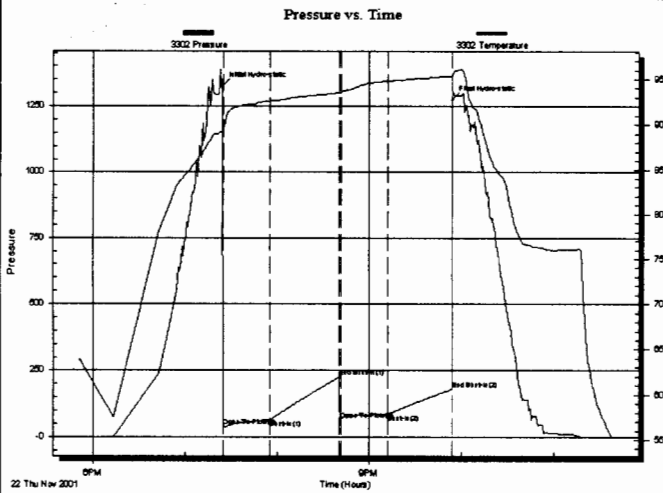
Miles "A" #8
30-27s-10w
Job Ticket: 14122 **DST#: 6**
Test Start: 2001.11.22 @ 17:50:50

GENERAL INFORMATION:

Formation: **Tarkio**
Deviated: **No** Whipstock: **ft (KB)**
Time Tool Opened: 19:24:50
Time Test Ended: 23:37:50
Test Type: **Conventional Bottom Hole**
Tester: **Darren L.Amerine**
Unit No: **19**
Interval: **2490.00 ft (KB) To 2540.00 ft (KB) (TVD)**
Total Depth: **2540.00 ft (KB) (TVD)**
Reference Elevations: **1670.00 ft (KB)**
1659.00 ft (CF)
Hole Diameter: **7.88 inches** Hole Condition:
KB to GR/CF: **11.00 ft**

Serial #: 3302 **Inside**
Press@RunDepth: **86.74 psig @ 2491.00 ft (KB)** Capacity: **7000.00 psig**
Start Date: **2001.11.22** End Date: **2001.11.22** Last Calib.: **2001.11.22**
Start Time: **17:50:52** End Time: **23:37:50** Time On Btm: **2001.11.22 @ 19:24:20**
Time Off Btm: **2001.11.22 @ 21:53:50**

TEST COMMENT: IF:Fair blow b.o.b in 5 mins.
IS:Bled down n for 2 mins no blow back.
FF:Fair blow b.o.b in 2 mins.
FS:Bled down n for 2 mins.no blow back.



PRESSURE SUMMARY

Time (Min.)	Pressure (psig)	Temp (deg F)	Annotation
0	1326.89	89.28	Initial Hydro-static
1	38.88	89.53	Open To Flow (1)
31	64.53	92.62	Shut-In(1)
76	225.87	93.51	End Shut-In(1)
77	63.93	93.57	Open To Flow (2)
108	86.74	94.82	Shut-In(2)
150	179.75	95.36	End Shut-In(2)
150	1273.78	95.25	Final Hydro-static

Recovery

Length (ft)	Description	Volume (bbl)
310.00	01 - Gas	2.09
130.00	GCM 20%gas 80%mud	1.82

Gas Rates

	Choke (inches)	Pressure (psig)	Gas Rate (Mcf/d)



**TRILOBITE
TESTING, INC.**

DRILL STEM TEST REPORT

TOOL DIAGRAM

Gemini Oil Company

Miles "A"#8

Phillower bldg.427
S.Boston Ave.#320
Tulsa,OK 74103

30-27s-10w

Job Ticket: 14122

DST#: 6

ATTN: Allen G.Siemens

Test Start: 2001.11.22 @ 17:50:50

Tool Information

Drill Pipe:	Length: 2238.14 ft	Diameter: 3.80 inches	Volume: 31.40 bbl	Tool Weight: 2100.00 lb
Heavy Wt. Pipe:	Length: 0.00 ft	Diameter: 0.00 inches	Volume: 0.00 bbl	Weight set on Packer: 20000.00 lb
Drill Collar:	Length: 247.86 ft	Diameter: 2.25 inches	Volume: 1.22 bbl	Weight to Pull Loose: 50000.00 lb
			<u>Total Volume: 32.62 bbl</u>	Tool Chased 0.00 ft
Drill Pipe Above KB:	24.00 ft			String Weight: Initial 47000.00 lb
Depth to Top Packer:	2490.00 ft			Final 47000.00 lb
Depth to Bottom Packer:	ft			
Interval between Packers:	50.00 ft			
Tool Length:	78.00 ft			
Number of Packers:	2	Diameter: 6.75 inches		

Tool Comments:

RECEIVED
 MAY 02 2004
 KCC WICHITA

Tool Description	Length (ft)	Serial No.	Position	Depth (ft)	Accum. Lengths
C.O. Sub	1.00			2463.00	
S.I. Tool	5.00			2468.00	
HMV	5.00			2473.00	
Jars	5.00			2478.00	
Safety Joint	2.00			2480.00	
Packer	5.00			2485.00	28.00 Bottom Of Top Packer
Packer	5.00			2490.00	
Stubb	1.00			2491.00	
Recorder	0.00	3302	Inside	2491.00	
Anchor	15.00			2506.00	
Recorder	0.00	13769	Outside	2506.00	
Blank Spacing	30.00			2536.00	
Bullnose	4.00			2540.00	50.00 Bottom Packers & Anchor

Total Tool Length: 78.00



**TRILOBITE
TESTING, INC.**

DRILL STEM TEST REPORT

FLUID SUMMARY

Gemini Oil Company

Miles "A" #8

Philtow er bldg.427
S.Boston Ave.#320
Tulsa,OK 74103

30-27s-10w

Job Ticket: 14122

DST#: 6

ATTN: Allen G.Siemens

Test Start: 2001.11.22 @ 17:50:50

Mud and Cushion Information

Mud Type: Gel Chem	Cushion Type:	Oil API:	deg API
Mud Weight: 10.00 lb/gal	Cushion Length: ft	Water Salinity:	ppm
Viscosity: 40.00 sec/qt	Cushion Volume: bbl		
Water Loss: in ³	Gas Cushion Type:		
Resistivity: 0.20 ohm.m	Gas Cushion Pressure: psig		
Salinity: 26000.00 ppm			
Filter Cake: 0.32 inches			

Recovery Information

Recovery Table

Length ft	Description	Volume bbl
310.00	01 - Gas	2.091
130.00	GCM 20%gas 80%mud	1.824

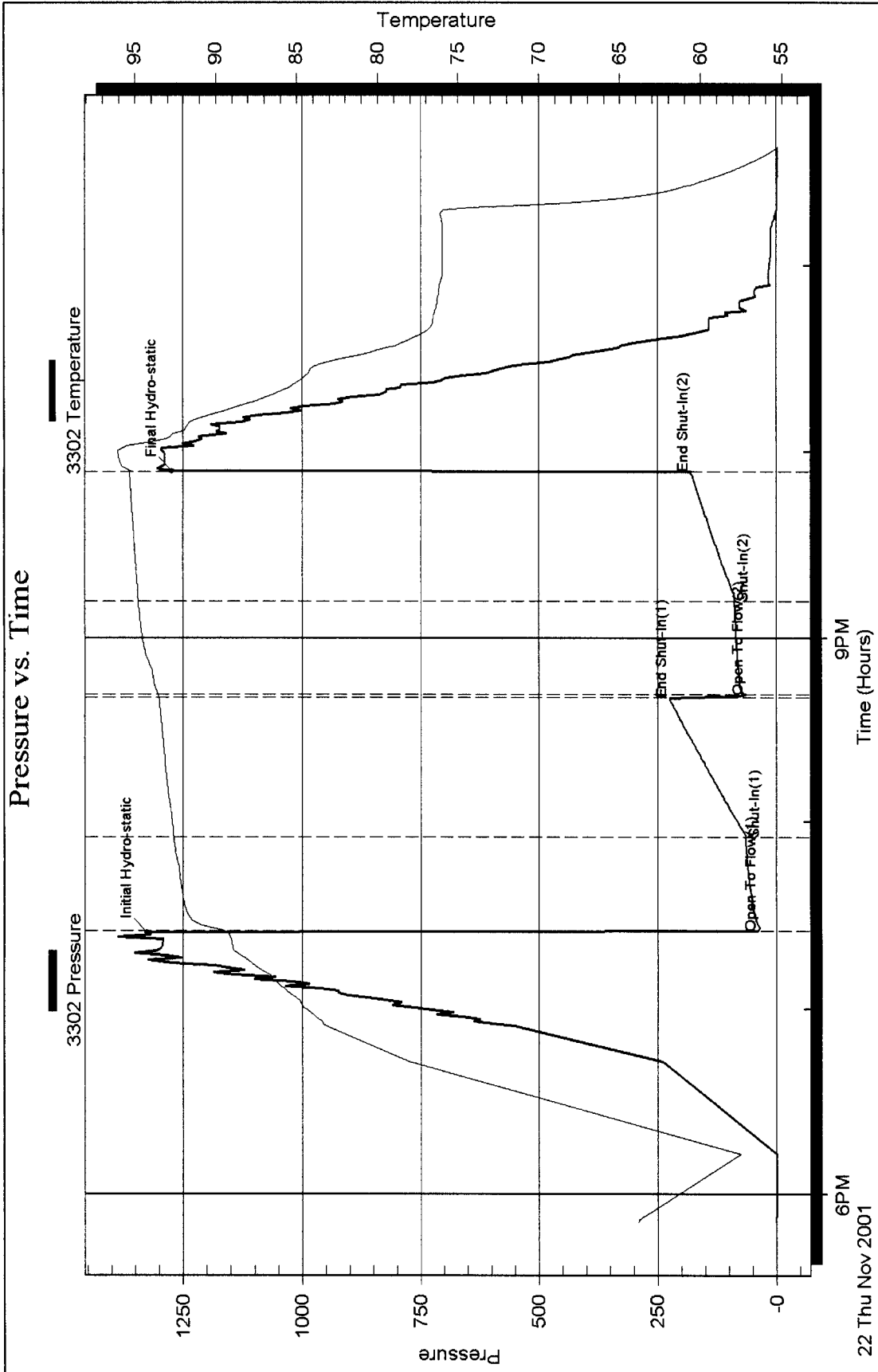
Total Length: 440.00 ft Total Volume: 3.915 bbl

Num Fluid Samples: 0 Num Gas Bombs: 0 Serial #:

Laboratory Name: Caraway Laboratory Location: Liberal KS

Recovery Comments:

Pressure vs. Time



6PM
22 Thu Nov 2001

9PM
Time (Hours)

RECEIVED
MAY 02 2002
KCC WICHITA