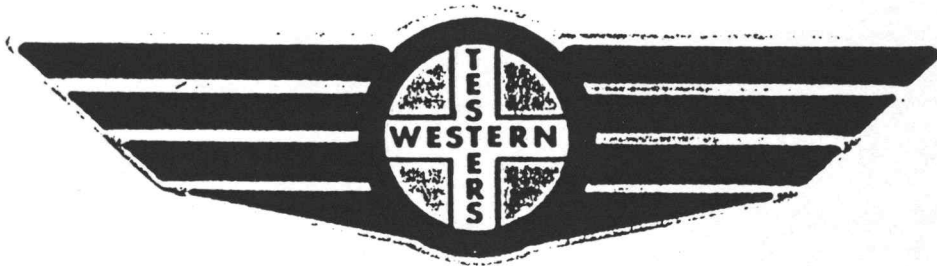


FORMATION TEST REPORT



Home Office:

Wichita, Kansas 67201

P.O. Box 1599

Phone (316) 262-5861

COMPANY CROSSWIND PETROLEUM, INC. & LEASE & WELL NO.
MID-CONTINENT ENERGY CORPORATION

EINSEL TRUST #3

SEC. 10 TWP. 27S RGE. 20W

TEST NO. 1

DATE

5/7/88

WESTERN TESTING CO. INC.
SUBSURFACE PRESSURE SURVEY

DATE : 5-7-88 TICKET : 13957
CUSTOMER : CROSSWIND PETROLEUM INC.
MID-CONTINENT ENERGY CORP. LEASE : EINSEL TRUST
WELL : #3 TEST: 1 GEOLOGIST : BIRD
ELEVATION : 2295 KB FORMATION : MISSISSIPPI
SECTION : 10 TOWNSHIP : 27S
RANGE : 20W COUNTY : KIOWA STATE : KANSAS
GAUGE SN# : 13362 RANGE : 4450 CLOCK : 12

INTERVAL FROM : 4797 TO : 4882 TOTAL DEPTH : 4882

DEPTH OF SELECTIVE ZONE :
PACKER DEPTH : 4792 SIZE : 6.63
PACKER DEPTH : 4797 SIZE : 6.63
PACKER DEPTH : SIZE :
PACKER DEPTH : SIZE :

DRILLING CON. : DUKE RIG 2
MUD TYPE : CHEM/LOW SOLIDSVISCOSITY : 45
WEIGHT : 9.5 WATER LOSS (CC) : 12.4
CHLORIDES (PPM) : 5000
JARS-MAKE : WTC SERIAL NUMBER : 421
DID WELL FLOW ? : NO REVERSED OUT ? : NO

DRILL COLLAR LENGTH : 0 FT I.D. inch : 0.00
WEIGHT PIPE LENGTH : 0 FT I.D. inch : 0.00
DRILL PIPE LENGTH : 4770 FT I.D. inch : 3.80
TEST TOOL LENGTH : 28 FT TOOL SIZE : 5.50
ANCHOR LENGTH : 85 FT ANCHOR SIZE : 5.50
SURFACE CHOKE SIZE : .75 IN BOTTOM CHOKE SIZE : .75
MAIN HOLE SIZE : 7.875 IN TOOL JOINT SIZE : 4.5 XH

BLOW COMMENT #1 : WEAK STEADY BLOW ON BOTH FLOW PERIODS.
BLOW COMMENT #2 :
BLOW COMMENT #3 :
BLOW COMMENT #4 :

RECOVERED : 55 FT OF: DRILLING MUD

Total Barrels Fluid = 0.77
Total Fluid Prod Rate = 18.51 BFPD
Indicated Wtr Rate = 1.85 BWPD

REMARK 1 :
REMARK 2 :
REMARK 3 :
REMARK 4 :

SET PACKER(S) : 6:00 PM

TIME STARTED OFF BOTTOM : 8:00 PM

WELL TEMPERATURE : 120

INITIAL HYDROSTATIC PRESSURE

(A) 2379

INITIAL FLOW PERIOD MIN: 30

(B) 166 PSI TO (C) : 103

INITIAL CLOSED IN PERIOD MIN: 27

(D) 382

FINAL FLOW PERIOD MIN: 30

(E) 98 PSI TO (F) : 98

FINAL CLOSED IN PERIOD MIN: 30

(G) 193

FINAL HYDROSTATIC PRESSURE

(H) 2379

WESTERN TESTING CO. INC.
WICHITA-KANSAS

Pressure Transient Report

COMPANY : CROSSWIND PETROLEUM INC.
MID-CONTINENT ENERGY CORP.
RIG : KIOWA-KANSAS
FIELD : EINSEL TRUST
WELL : #3
DATE : 5-7-88
GAUGE NO : 13362

OPERATIONAL COMMENTS

COMPANY : CROSSWIND PETROLEUM INC.
MID-CONTINENT ENERGY CORP.

FIELD : EINSEL TRUST

WELL : #3
GAUGE # : 13362
DATE : 7/ 5/88

JOB # : 13957
DEPTH : 4882
TEST :

DATA No.	REAL TIME HR:MN:SS	ELAPSE TIME DELTA HOURS	PRESSURE PSIG	TEMP DEG F	DELTA P $P_i - P_{(i-1)}$
1	6: 0: 0	0.000	166.000	120.00	0.000
2	6: 4: 59	0.083	135.000	120.00	-31.000
3	6:10: 0	0.167	123.000	120.00	-12.000
4	6:15: 0	0.250	112.000	120.00	-11.000
5	6:19: 59	0.333	109.000	120.00	-3.000
6	6:25: 0	0.417	104.000	120.00	-5.000
7	6:30: 0	0.500	103.000	120.00	-1.000
8	6:33: 0	0.550	107.000	120.00	4.000
9	6:36: 0	0.600	111.000	120.00	4.000
10	6:39: 0	0.650	120.000	120.00	9.000
11	6:42: 0	0.700	137.000	120.00	17.000
12	6:45: 0	0.750	165.000	120.00	28.000
13	6:48: 0	0.800	204.000	120.00	39.000
14	6:51: 0	0.850	251.000	120.00	47.000
15	6:54: 0	0.900	306.000	120.00	55.000
16	6:57: 0	0.950	382.000	120.00	76.000
17	6:58: 0	0.967	98.000	120.00	-284.000
18	7: 1: 59	1.033	98.000	120.00	0.000
19	7: 7: 0	1.117	98.000	120.00	0.000
20	7:12: 0	1.200	98.000	120.00	0.000
21	7:16: 59	1.283	98.000	120.00	0.000
22	7:22: 0	1.367	98.000	120.00	0.000
23	7:27: 0	1.450	98.000	120.00	0.000
24	7:30: 0	1.500	98.000	120.00	0.000
25	7:33: 0	1.550	99.000	120.00	1.000
26	7:36: 0	1.600	101.000	120.00	2.000
27	7:39: 0	1.650	105.000	120.00	4.000
28	7:42: 0	1.700	112.000	120.00	7.000
29	7:45: 0	1.750	119.000	120.00	7.000
30	7:48: 0	1.800	127.000	120.00	8.000
31	7:51: 0	1.850	138.000	120.00	11.000
32	7:54: 0	1.900	150.000	120.00	12.000
33	7:57: 0	1.950	193.000	120.00	43.000

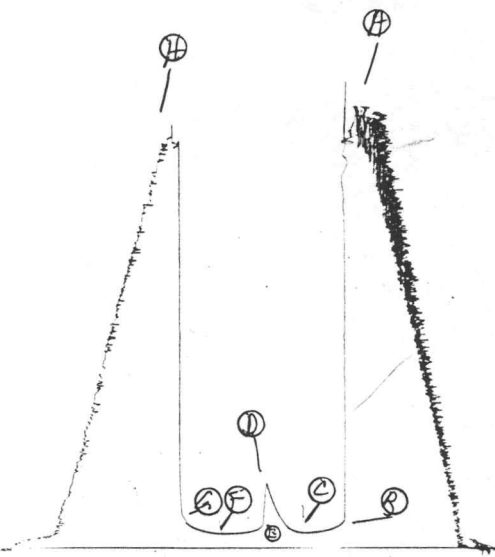
WESTERN TESTING CO. INC.

13362 DSF#1

*

KA 13957

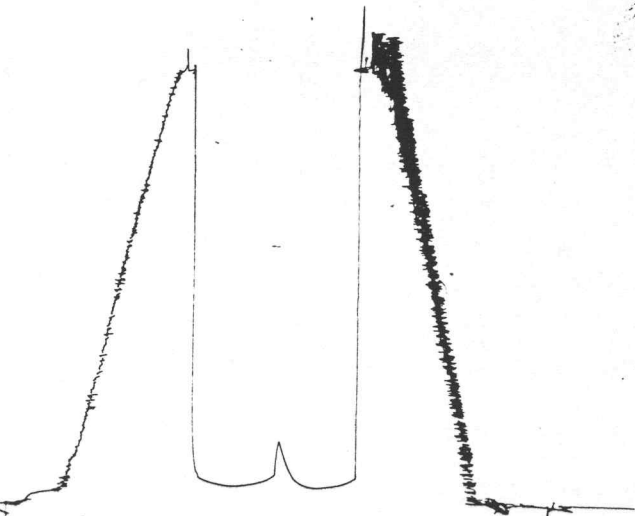
J



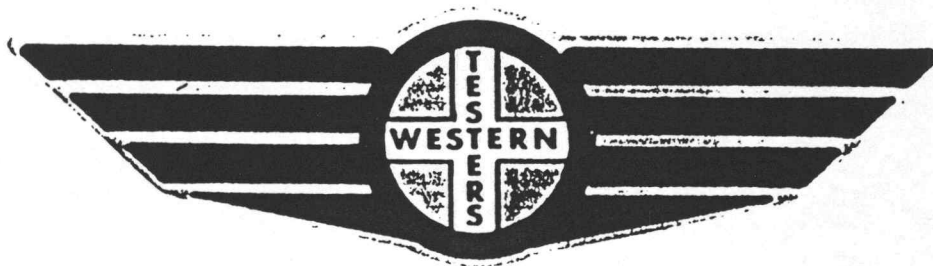
13520 - DST #1

TRF 13957

0



FORMATION TEST REPORT



Home Office:

Wichita, Kansas 67201

P.O. Box 1599

Phone (316) 262-5861

WESTERN TESTING CO. INC.
SUBSURFACE PRESSURE SURVEY

DATE : 5-8-88 TICKET : 13958
CUSTOMER : CROSSWIND PETROLEUM INC.
& MID-CONTINENT ENERGY CORP. LEASE : EINSEL TRUST
WELL : #3 TEST: 2 GEOLOGIST : J C LANDES
ELEVATION : 2295 KB FORMATION : MISSISSIPPI
SECTION : 10 TOWNSHIP : 27S
RANGE : 20W COUNTY : KIOWA STATE : KANSAS
GAUGE SN# : 13362 RANGE : 4450 CLOCK : 12

INTERVAL FROM : 4887 TO : 4903 TOTAL DEPTH : 4903
DEPTH OF SELECTIVE ZONE :
PACKER DEPTH : 4882 SIZE : 6.63
PACKER DEPTH : 4887 SIZE : 6.63
PACKER DEPTH : SIZE :
PACKER DEPTH : SIZE :

DRILLING CON. : DUKE RIG 2
MUD TYPE : CHEM/ LOW SOLIDS

WEIGHT : 9.1 VISCOSITY : 45
CHLORIDES (PPM) : 5000 WATER LOSS (CC) : 12.4
JARS-MAKE : WTC SERIAL NUMBER : 421
DID WELL FLOW ? : NO REVERSED OUT ? : NO

DRILL COLLAR LENGTH : 0 FT I.D. inch : 0.00
WEIGHT PIPE LENGTH : 0 FT I.D. inch : 0.00
DRILL PIPE LENGTH : 4859 FT I.D. inch : 3.80
TEST TOOL LENGTH : 28 FT TOOL SIZE : 5.50
ANCHOR LENGTH : 16 FT ANCHOR SIZE : 5.50
SURFACE CHOKE SIZE : .75 IN BOTTOM CHOKE SIZE : .75
MAIN HOLE SIZE : 7.875 IN TOOL JOINT SIZE : 4.5 XH

BLOW COMMENT #1 : VERY WEAK STEADY BLOW ON THE INITIAL FLOW.
BLOW COMMENT #2 :
BLOW COMMENT #3 :
BLOW COMMENT #4 :

RECOVERED : 125 FT OF: MUDDY WATER

Total Barrels Fluid = 1.75
Total Fluid Prod Rate = 45.90 BFPD
Indicated Wtr Rate = 4.41 BWPD

REMARK 1 :
REMARK 2 :
REMARK 3 :
REMARK 4 :

SET PACKER(S) : 6:15 AM

TIME STARTED OFF BOTTOM : 8:15 AM

WELL TEMPERATURE : 120

INITIAL HYDROSTATIC PRESSURE

(A) 2480

INITIAL FLOW PERIOD MIN: 25

(B) 125 PSI TO (C) : 69

INITIAL CLOSED IN PERIOD MIN: 36

(D) 1427

FINAL FLOW PERIOD MIN: 30

(E) 137 PSI TO (F) : 94

FINAL CLOSED IN PERIOD MIN: 21

(G) 1331

FINAL HYDROSTATIC PRESSURE

(H) 2433

WESTERN TESTING CO. INC.
WICHITA-KANSAS

Pressure Transient Report

COMPANY : CROSSWIND PETROLEUM INC.
& MID-CONTINENT ENERGY CORP.

RIG : KIOWA-KANSAS

FIELD : EINSEL TRUST

WELL : #3

DATE : 5-8-88

GAUGE NO : 13362

OPERATIONAL COMMENTS

COMPANY : CROSSWIND PETROLEUM INC.
 & MID-CONTINENT ENERGY CORP.
 WELL : #3
 GAUGE # : 13362
 DATE : 8/ 5/88

FIELD : EINSEL TRUST
 JOB # : 13958
 DEPTH : 4903
 TEST :

DATA No.	REAL TIME HR:MN:SS	ELAPSE TIME DELTA HOURS	PRESSURE PSIG	TEMP DEG F	DELTA P $P_i - P_{(i-1)}$
1	6:15: 0	0.000	125.000	120.00	0.000
2	6:19:59	0.083	96.000	120.00	-29.000
3	6:25: 0	0.167	81.000	120.00	-15.000
4	6:30: 0	0.250	75.000	120.00	-6.000
5	6:34:59	0.333	71.000	120.00	-4.000
6	6:40: 0	0.417	69.000	120.00	-2.000
7	6:43: 0	0.467	163.000	120.00	94.000
8	6:46: 0	0.517	418.000	120.00	255.000
9	6:49: 0	0.567	1023.000	120.00	605.000
10	6:52: 0	0.617	1236.000	120.00	213.000
11	6:55: 0	0.667	1308.000	120.00	72.000
12	6:58: 0	0.717	1340.000	120.00	32.000
13	7: 1: 0	0.767	1367.000	120.00	27.000
14	7: 4: 0	0.817	1388.000	120.00	21.000
15	7: 7: 0	0.867	1400.000	120.00	12.000
16	7:10: 0	0.917	1411.000	120.00	11.000
17	7:13: 0	0.967	1418.000	120.00	7.000
18	7:16: 0	1.017	1427.000	120.00	9.000
19	7:17: 0	1.033	137.000	120.00	-1290.000
20	7:21: 0	1.100	112.000	120.00	-25.000
21	7:26: 0	1.183	103.000	120.00	-9.000
22	7:31: 0	1.267	99.000	120.00	-4.000
23	7:36: 0	1.350	95.000	120.00	-4.000
24	7:41: 0	1.433	94.000	120.00	-1.000
25	7:46: 0	1.517	94.000	120.00	0.000
26	7:49: 0	1.567	159.000	120.00	65.000
27	7:52: 0	1.617	399.000	120.00	240.000
28	7:55: 0	1.667	950.000	120.00	551.000
29	7:58: 0	1.717	1184.000	120.00	234.000
30	8: 1: 0	1.767	1265.000	120.00	81.000
31	8: 4: 0	1.817	1302.000	120.00	37.000
32	8: 7: 0	1.867	1331.000	120.00	29.000

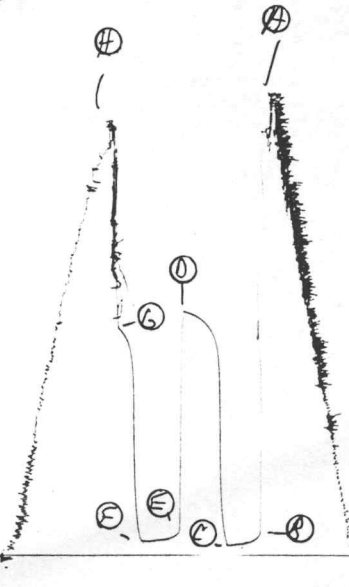
WESTERN TESTING CO. INC.

13362 DST#2

X

HK 13958

Z



13520 DST #2

AT 13958

0

