

SUPERIOR TESTERS

368 West Second, Hoisington, Kansas

COMPANY B. Bently Corp. STATE Kansas COUNTY Pratt
LEASE & WELL NO. Jones # 5 ELEVATION 2050 KB. DATE 11/11/81 FORMATION TESTED Howard
SEC 13 TWP 27 RANGE 15 INTERVAL TESTED 3216 TO 3294 TOTAL DEPTH 3294
TEST NO # 1 O.K. yes TOP PACKER DEPTH 3211 FT. BOTTOM PACKER DEPTH 3216 FT. PACKER SIZE 6 & 3/4
STRADDLE no CONV yes TOOL SIZE 5 1/2 OD. TOOL JOINT SIZE 4 1/2 FH. ANCHOR LENGTH 78 FT.
HOLE SIZE 7 & 7/8 EXTRA EQUIPMENT none SURFACE CHOKE SIZE 1/2 IN. BOTTOM CHOKE SIZE 1/2 IN.
REVERSED OUT no VISCOSITY 42 WEIGHT 9.7 DUAL PACKERS yes DID PACKER HOLD yes DID TOOL PLUG no
DRILLING CONTRACTOR Ramco # 5

TOOL JOINT SIZE 4 1/2 XH. IN. LENGTH DRILL PIPE 2988 FT. I.D. DRILL PIPE 3.75 IN.
TOOL JOINT SIZE ----- IN. LENGTH WEIGHT PIPE ----- FT. I.D. WEIGHT PIPE ---- IN.
TOOL JOINT SIZE 4 1/2 XH. IN. LENGTH DRILL COLLARS 279 FT. I.D. DRILL COLLARS 2.25 IN.
TOOL OPEN I.F.P. FROM 4:00 a. m to 5:00 a. m Hr. 60 min From (B) 173 P.S.I. to (C) 386 P.S.I.
TOOL CLOSED I.C.I.P. FROM 5:00 a. m to 6:00 a. m Hr. 60 min (D) 1079 P.S.I.
TOOL OPEN F.F.P. FROM 6:00 a. m to 7:00 a. m Hr. 60 min From (E) 414 P.S.I. to (F) 617 P.S.I.
TOOL CLOSED F.C.I.P. FROM 7:00 a. m to 8:00 a. m Hr. 60 min (G) 1051 P.S.I.

INITIAL HYDROSTATIC PRESSURE (A) 1327 P.S.I. FINAL HYDROSTATIC PRESSURE (H) 1295 MAXIMUM TEMPERATURE 110 °F

BLOW Strong blow off bottom of bucket in 3 minutes 1st opening.
Strong blow off bottom of bucket in 45 seconds 2nd opening.

RECOVERY - TOTAL FEET 1540 ft.
RECOVERED 300 FEET OF Frothy mud.
RECOVERED 1240 FEET OF Water (very gasy).
RECOVERED _____ FEET OF _____
RECOVERED Gas gauged: FEET OF 4:35 -15,400 6:15-12,000
RECOVERED _____ FEET OF 4:45 -16,100 6:25-13,500
RECOVERED _____ FEET OF 4:55 -15,700 6:35-12,900
RECOVERED _____ FEET OF 1st opening. 6:45-13,500
RECOVERED _____ FEET OF _____ 6:55-12,900 2nd opening.
RECOVERED _____ FEET OF _____
RECOVERED _____ FEET OF _____
RECOVERED _____ FEET OF _____
RECOVERED _____ FEET OF _____
RECOVERED _____ FEET OF _____

REMARKS None.

TICKET NO. 5893

WITNESSED BY: _____ TOOL OPERATOR: Ivan Suppes

SUPERIOR TESTERS
368 West Second, Hoisington, Kansas

COMPANY B. Bently Corp. STATE Kansas COUNTY Pratt
 LEASE & WELL NO. Jones #5 ELEVATION 2050 KB. DATE 11/14/81 FORMATION TESTED Lansing
 SEC 13 TWP 27 RANGE 15 INTERVAL TESTED 3962 TO 3997 TOTAL DEPTH 3997
 TEST NO. #2 O.K. yes TOP PACKER DEPTH 3957 FT. BOTTOM PACKER DEPTH 3962 FT. PACKER SIZE 6 & 3/4
 STRADDLE no CONV. yes TOOL SIZE 5 1/2 OD. TOOL JOINT SIZE 4 1/2 FH. ANCHOR LENGTH 35 FT.
 HOLE SIZE 7 & 7/8 EXTRA EQUIPMENT Jars & Joint SURFACE CHOKE SIZE 1/2 IN. BOTTOM CHOKE SIZE 1/2 IN.
 REVERSED OUT no VISCOSITY 42 WEIGHT 9.9 DUAL PACKERS yes DID PACKER HOLD yes DID TOOL PLUG no
 DRILLING CONTRACTOR Ramco #5

TOOL JOINT SIZE 4 1/2 XH. IN. LENGTH DRILL PIPE 3691 FT. I.D. DRILL PIPE 3.80 IN.
 TOOL JOINT SIZE _____ IN. LENGTH WEIGHT PIPE _____ FT. I.D. WEIGHT PIPE _____ IN.
 TOOL JOINT SIZE 4 1/2 XH. IN. LENGTH DRILL COLLARS 250 FT. I.D. DRILL COLLARS 2.25 IN.
 TOOL OPEN I.F.P. FROM 7:00 a. m to 8:00 a. m Hr. 60 min From (B) 657 P.S.I. to (C) 808 P.S.I.
 TOOL CLOSED I.C.I.P. FROM 8:00 a. m to 9:00 a. m Hr. 60 min (D) 1234 P.S.I.
 TOOL OPEN F.F.P. FROM 9:00 a. m to 10:00 a. m Hr. 60 min From (E) 464 P.S.I. to (F) 556 P.S.I.
 TOOL CLOSED F.C.I.P. FROM 10:00 a. m to 11:00 a. m Hr. 60 min (G) 1173 P.S.I.

INITIAL HYDROSTATIC PRESSURE (A) 2145 P.S.I. FINAL HYDROSTATIC PRESSURE (H) 2125 MAXIMUM TEMPERATURE 130 °F
 BLOW Strong blow through-out 1st & 2nd opening.

RECOVERY - TOTAL FEET 570 ft.
 RECOVERED 120 FEET OF Slightly muddy gassy Oil.
 RECOVERED 60 FEET OF Gassy free Oil. Gravity Corrected 42).
 RECOVERED 390 FEET OF Gassy salt water.
 RECOVERED _____ FEET OF _____
 RECOVERED Gas gauged: FEET OF 10min-2,060,000 10min-surgin urgaugable
 RECOVERED _____ FEET OF 20min-2,060,000 20min-2,530,000
 RECOVERED _____ FEET OF 30min-2,130,000 30min-2,000,000
 RECOVERED _____ FEET OF 40min-2,190,000 40min-1,930,000
 RECOVERED _____ FEET OF 50min-2,130,000 50min1,930,000
 RECOVERED _____ FEET OF 60min-1,140,000 60min-1,930,000
 RECOVERED _____ FEET OF 1st opening. 2nd opening.
 RECOVERED _____ FEET OF _____
 RECOVERED _____ FEET OF _____

REMARKS Mud to surface 30 minutes 1st opening, Oily mud to surface in 50 minutes.
Oily mud to surface 30 minutes 2nd opening changing to Oily water last 30minutes.

TICKET NO. 7227
 WITNESSED BY: _____ TOOL OPERATOR: Frank Lovejoy

SUPERIOR TESTERS
368 West Second, Hoisington, Kansas

COMPANY B. Bently Corp. STATE Kansas COUNTY Pratt
LEASE & WELL NO. Jones #5 ELEVATION 2050 KB. DATE 11/15/81 FORMATION TESTED Lansing
SEC 13 TWP 27 RANGE 15 INTERVAL TESTED 4014 TO 4058 TOTAL DEPTH 4058
TEST NO. #3 O.K. yes TOP PACKER DEPTH 4009 FT. BOTTOM PACKER DEPTH 4014 FT. PACKER SIZE 6 & 3/4
STRADDLE no CONV. yes TOOL SIZE 5 1/2 OD. TOOL JOINT SIZE 4 1/2 FH. ANCHOR LENGTH 44 FT.
HOLE SIZE 7 & 7/8 EXTRA EQUIPMENT Jars & Joint SURFACE CHOKE SIZE 1/2 IN. BOTTOM CHOKE SIZE 1/2 IN.
REVERSED OUT no VISCOSITY 40 WEIGHT 10. DUAL PACKERS yes DID PACKER HOLD yes DID TOOL PLUG no
DRILLING CONTRACTOR Ramco #5

TOOL JOINT SIZE 4 1/2 XH. IN. LENGTH DRILL PIPE 3765 FT. I.D. DRILL PIPE 3.80 IN.
TOOL JOINT SIZE _____ IN. LENGTH WEIGHT PIPE _____ FT. I.D. WEIGHT PIPE _____ IN.
TOOL JOINT SIZE 4 1/2 XH. IN. LENGTH DRILL COLLARS 209 FT. I.D. DRILL COLLARS 2.25 IN.
TOOL OPEN I.F.P. FROM 10:15a. m to 10:45 a. m Hr. 30 min From (B) 123 P.S.I. to (C) 216 P.S.I.
TOOL CLOSED I.C.I.P. FROM 10:45a. m to 11:15 a. m Hr. 30 min (D) 1336 P.S.I.
TOOL OPEN F.F.P. FROM 11:15 a. m to 11:45 a. m Hr. 30 min From (E) 237 P.S.I. to (F) 206 P.S.I.
TOOL CLOSED F.C.I.P. FROM 11:45 a. m to 12:45 a. m Hr. 60 min (G) 1357 P.S.I.

INITIAL HYDROSTATIC PRESSURE (A) 2125 P.S.I. FINAL HYDROSTATIC PRESSURE (H) 2074 MAXIMUM TEMPERATURE 130 °F
BLOW Fair building blow to 8" under water in bucket 1st opening.
Weak building blow to 6" under water in bucket 2nd opening.

RECOVERY - TOTAL FEET 340 ft
RECOVERED 340 FEET OF Watery mud slight show of Oil in tool.
RECOVERED _____ FEET OF _____
RECOVERED _____ FEET OF _____
RECOVERED _____ FEET OF _____
RECOVERED _____ FEET OF _____
RECOVERED _____ FEET OF _____
RECOVERED _____ FEET OF _____
RECOVERED _____ FEET OF _____
RECOVERED _____ FEET OF _____
RECOVERED _____ FEET OF _____
RECOVERED _____ FEET OF _____
RECOVERED _____ FEET OF _____
RECOVERED _____ FEET OF _____

REMARKS Slight plugging action during 1st opening.

TICKET NO. 7228

WITNESSED BY: _____ TOOL OPERATOR: Frank Lovejoy

SUPERIOR TESTERS
368 West Second, Hoisington, Kansas

COMPANY B. Bently Corp. STATE Kansas COUNTY Pratt
 LEASE & WELL NO. Jones # 5 ELEVATION 2050 KB. DATE 11/16/81 FORMATION TESTED Lansing
 SEC. 13 TWP. 27 RANGE 15 INTERVAL TESTED 4098 TO 4178 TOTAL DEPTH 4178
 TEST NO. # 4 O.K. yes TOP PACKER DEPTH 4093 FT. BOTTOM PACKER DEPTH 4098 FT. PACKER SIZE 6 & 3/4
 STRADDLE no CONV. yes TOOL SIZE 5 1/2 OD. TOOL JOINT SIZE 4 1/2 FH. ANCHOR LENGTH 80 FT.
 HOLE SIZE 7 & 7/8 EXTRA EQUIPMENT Jars & Joint SURFACE CHOKE SIZE 1/2 IN. BOTTOM CHOKE SIZE 1/2 IN.
 REVERSED OUT no VISCOSITY 38 WEIGHT 9.6 DUAL PACKERS yes DID PACKER HOLD yes DID TOOL PLUG no
 DRILLING CONTRACTOR Ramco # 5

TOOL JOINT SIZE 4 1/2 XH. IN. LENGTH DRILL PIPE 3762 FT. I. D. DRILL PIPE 3,80 IN.
 TOOL JOINT SIZE _____ IN. LENGTH WEIGHT PIPE _____ FT. I. D. WEIGHT PIPE _____ IN.
 TOOL JOINT SIZE 4 1/2 XH. IN. LENGTH DRILL COLLARS 209 FT. I. D. DRILL COLLARS 2.25 IN.
 TOOL OPEN I. F. P. FROM 10:30 a.m. to 11:00 a.m. Hr. 30 min From (B) 196 P.S.I. to (C) 196 P.S.I.
 TOOL CLOSED I. C. I. P. FROM 11:00 a.m. to 11:30 a.m. Hr. 30 min (D) 1336 P.S.I.
 TOOL OPEN F. F. P. FROM 11:30 a.m. to 12:00 a.m. Hr. 30 min From (E) 278 P.S.I. to (F) 258 P.S.I.
 TOOL CLOSED F. C. I. P. FROM 12:00 a.m. to 1:00 p.m. Hr. 60 min (G) 1367 P.S.I.
 INITIAL HYDROSTATIC PRESSURE (A) 2186 P.S.I. FINAL HYDROSTATIC PRESSURE (H) 2155 MAXIMUM TEMPERATURE 132 °F

BLOW Fair building blow to bottom of bucket in 5 minutes.
Fair building blow to bottom of bucket in 6 minutes.

RECOVERY - TOTAL FEET 730 ft.
 RECOVERED 110 FEET OF Oil & Gas cut mud. (60%gas, 17%Oil, 7%water, 16%mud.)
 RECOVERED 250 FEET OF Heavy Oil & Gas cut mud. (52%gas, 21%Oil, 12%water, 15%mud.)
 RECOVERED 185 FEET OF Very heavy Oil & Gas cut mud. (50%gas, 25%Oil, 10%water, 15%mud.)
 RECOVERED 185 FEET OF Gassy muddy Oil. (47%gas, 32%Oil, 16%water, 12%mud.)
 RECOVERED _____ FEET OF _____
 RECOVERED _____ FEET OF _____
 RECOVERED _____ FEET OF _____
 RECOVERED _____ FEET OF _____
 RECOVERED _____ FEET OF _____
 RECOVERED _____ FEET OF _____
 RECOVERED _____ FEET OF _____
 RECOVERED _____ FEET OF _____
 RECOVERED _____ FEET OF _____

None.

TICKET NO. 7229

TOOL OPERATOR: Frank Lovejoy

WITNESSED

SUPERIOR TESTERS
368 West Second, Hoisington, Kansas

COMPANY B. Bently Corp. STATE Kansas COUNTY Pratt
 LEASE & WELL NO. Jones # 5 ELEVATION 2050 KB. DATE 11/17/81 FORMATION TESTED Laning
 SEC 13 TWP 27 RANGE 15 INTERVAL TESTED 4182 TO 4225 TOTAL DEPTH 4225
 TEST NO. #5 O.K. yes TOP PACKER DEPTH 4177 FT. BOTTOM PACKER DEPTH 4182 FT. PACKER SIZE 6 & 3/4
 STRADDLE no CONV. yes TOOL SIZE 5 1/2 OD. TOOL JOINT SIZE 4 1/2 FH. ANCHOR LENGTH 43
 HOLE SIZE 7 & 7/8 EXTRA EQUIPMENT Jars & Joint SURFACE CHOKE SIZE 1/2 IN. BOTTOM CHOKE SIZE 1/2
 REVERSED OUT no VISCOSITY 32 WEIGHT 9.5 DUAL PACKERS yes DID PACKER HOLD yes DID TOOL PLUG no
 DRILLING CONTRACTOR Ramco #5

TOOL JOINT SIZE 4 1/2 XH. IN. LENGTH DRILL PIPE 3946 FT. I.D. DRILL PIPE 3.80
 TOOL JOINT SIZE _____ IN. LENGTH WEIGHT PIPE _____ FT. I.D. WEIGHT PIPE _____
 TOOL JOINT SIZE 4 1/2 XH. IN. LENGTH DRILL COLLARS 209 FT. I.D. DRILL COLLARS 2.25
 TOOL OPEN I.F.P. FROM 5:00 a. m to 6:00 a. m Hr. 60 min From (B) 657 P.S.I. to (C) 808 P.S.I.
 TOOL CLOSED I.C.I.P. FROM 6:00 a. m to 7:00 a. m Hr. 60 min (D) 1234 P.S.I.
 TOOL OPEN F.F.P. FROM 7:00 a. m to 8:00 a. m Hr. 60 min From (E) 464 P.S.I. to (F) 556 P.S.I.
 TOOL CLOSED F.C.I.P. FROM 8:00 a. m to 9:00 a. m Hr. 60 min (G) 1173 P.S.I.
 INITIAL HYDROSTATIC PRESSURE (A) 2145 P.S.I. FINAL HYDROSTATIC PRESSURE (H) 2125 MAXIMUM TEMPERATURE 132

BLOW Strong off bottom of bucket 1st opening.
Fair blow through 2in. blow line surges off & on of Oil 2nd opening.
Free Oil.

RECOVERY - TOTAL FEET _____
 RECOVERED _____ FEET OF Reversed out free Oil in pipe. (gravity corrected 33)
 RECOVERED _____ FEET OF _____
 RECOVERED _____ FEET OF _____
 RECOVERED _____ FEET OF _____
 RECOVERED _____ FEET OF _____
 RECOVERED _____ FEET OF _____
 RECOVERED _____ FEET OF _____
 RECOVERED _____ FEET OF _____
 RECOVERED _____ FEET OF _____
 RECOVERED _____ FEET OF _____
 RECOVERED _____ FEET OF _____
 RECOVERED _____ FEET OF _____
 RECOVERED _____ FEET OF _____
 RECOVERED _____ FEET OF _____

REMARKS Surges of Oil off & on. 1st shut in 2nd opening & 2nd shut in.
Circ. sub pin \$ 35.00.

TICKET NO. 7230
 WITNESSED BY: _____ TOOL OPERATOR: Frank Lovejoy

13189

DST #
/

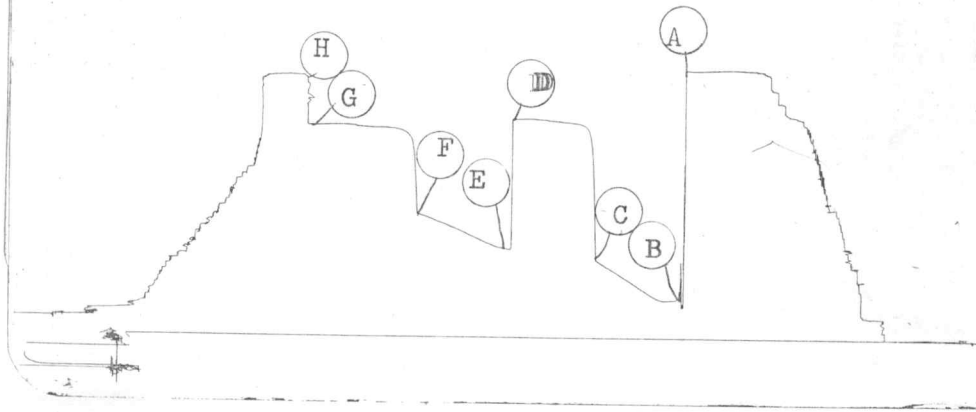
5893

13214

DST #
/

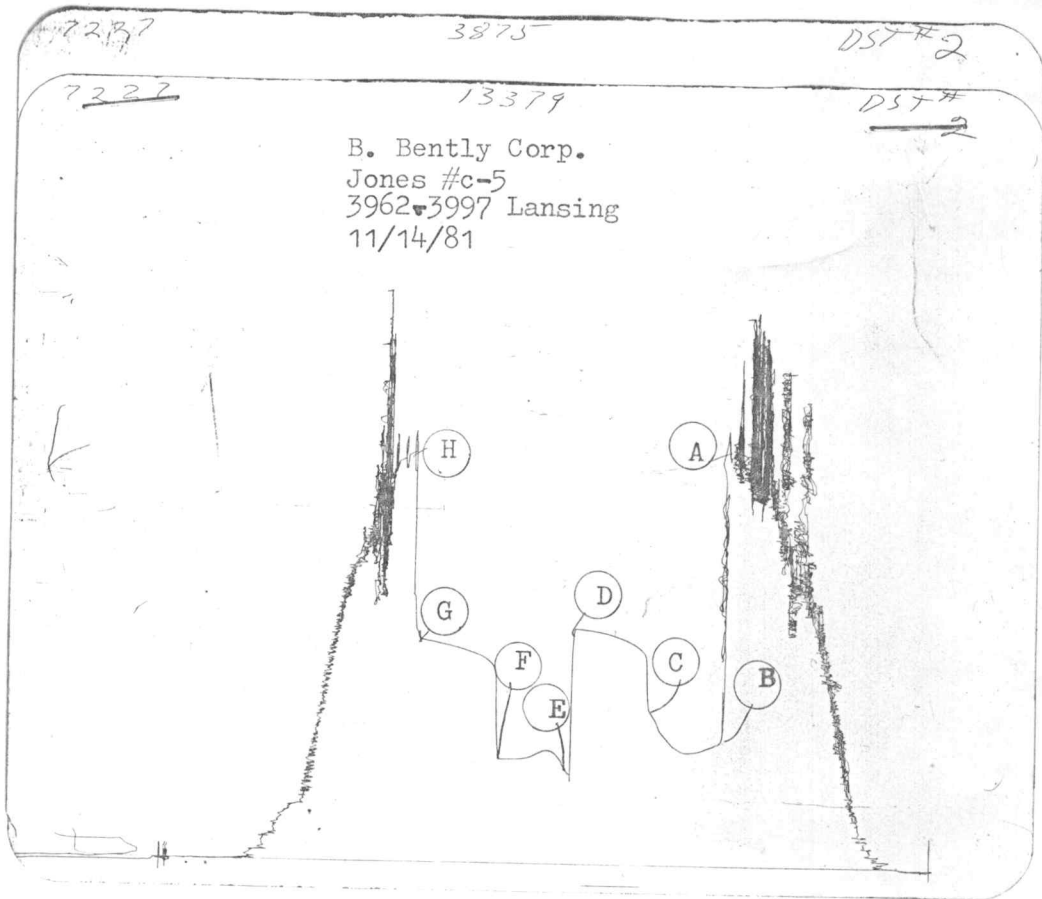
5893

B. Bently Corp.
Jones # c-5
3216-3294 Howard
11/11/81



This is actual recorder chart.

POINT	PRESSURE		P.S.I.
	FIELD READING	OFFICE READING	
(A) Initial Hydrostatic Mud	1327	1327	P.S.I.
(B) First Initial Flow Pressure	173	183	P.S.I.
(C) First Final Flow Pressure	386	386	P.S.I.
(D) Initial Closed-in Pressure	1099	1089	P.S.I.
(E) Second Initial Flow Pressure	414	424	P.S.I.
(F) Second Final Flow Pressure	617	617	P.S.I.
(G) Final Closed-in Pressure	1051	1051	P.S.I.
(H) Final Hydrostatic Mud	1295	1308	P.S.I.



This is actual recorder chart.

POINT	PRESSURE		
	FIELD READING	OFFICE READING	
(A) Initial Hydrostatic Mud	2145	2155	P.S.I.
(B) First Initial Flow Pressure	657	657	P.S.I.
(C) First Final Flow Pressure	808	818	P.S.I.
(D) Initial Closed-in Pressure	1234	1210	P.S.I.
(E) Second Initial Flow Pressure	464	475	P.S.I.
(F) Second Final Flow Pressure	556	556	P.S.I.
(G) Final Closed-in Pressure	1173	1173	P.S.I.
(H) Final Hydrostatic Mud	2125	2125	P.S.I.

7228

3875

DST 3

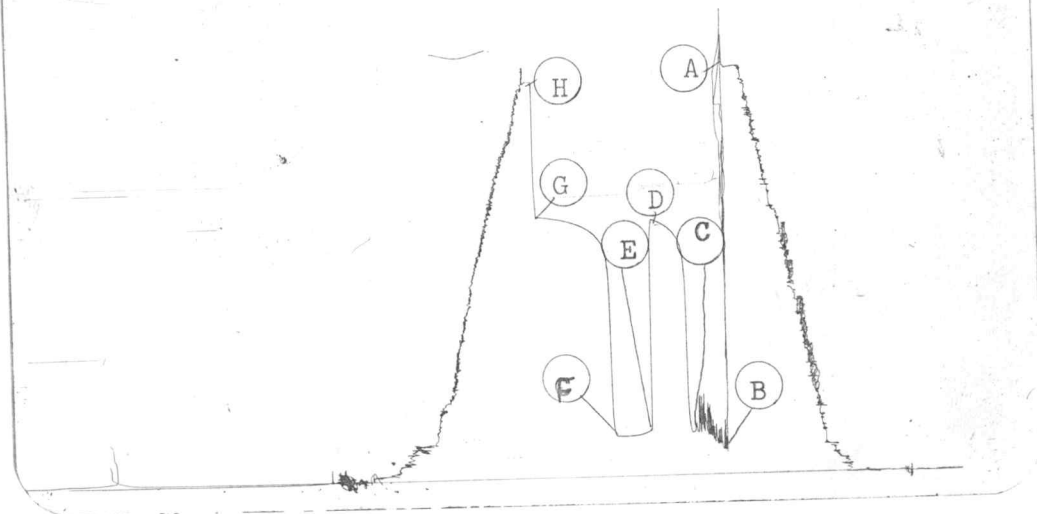
7228

13279

DST 3

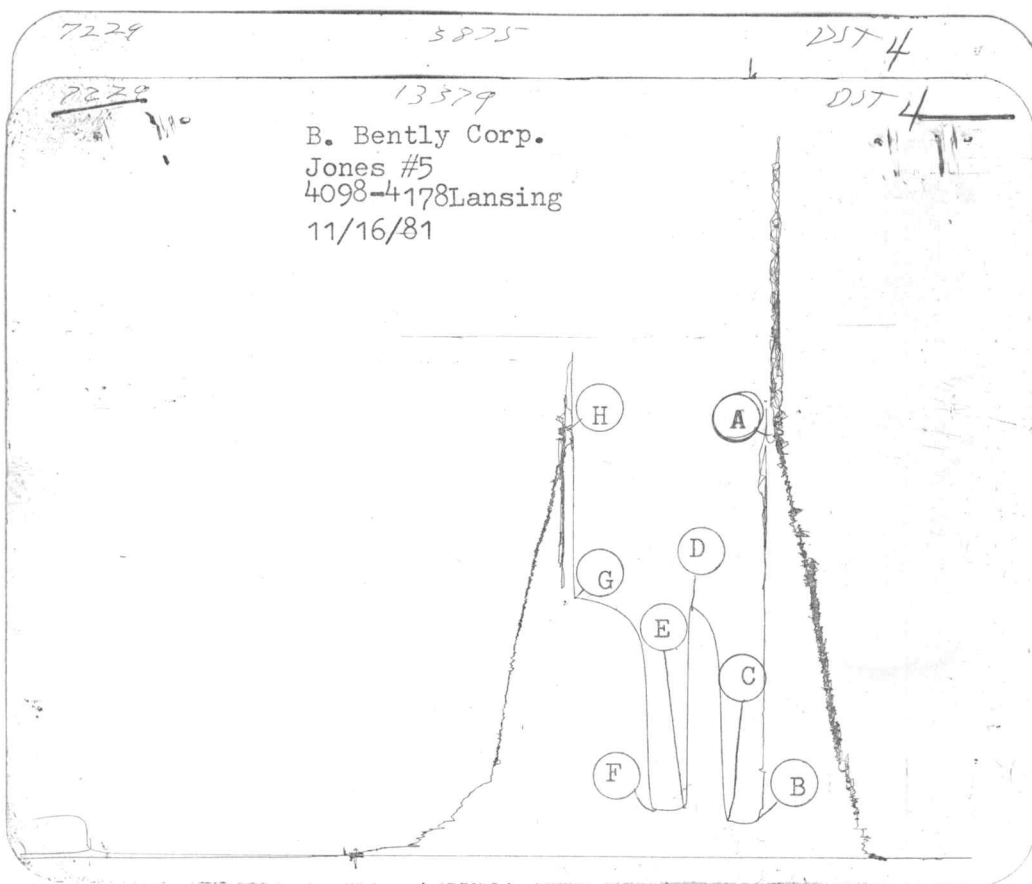
3

B. Bently Corp.
Jones # 5
4014-4058 Lansing
11/15/81



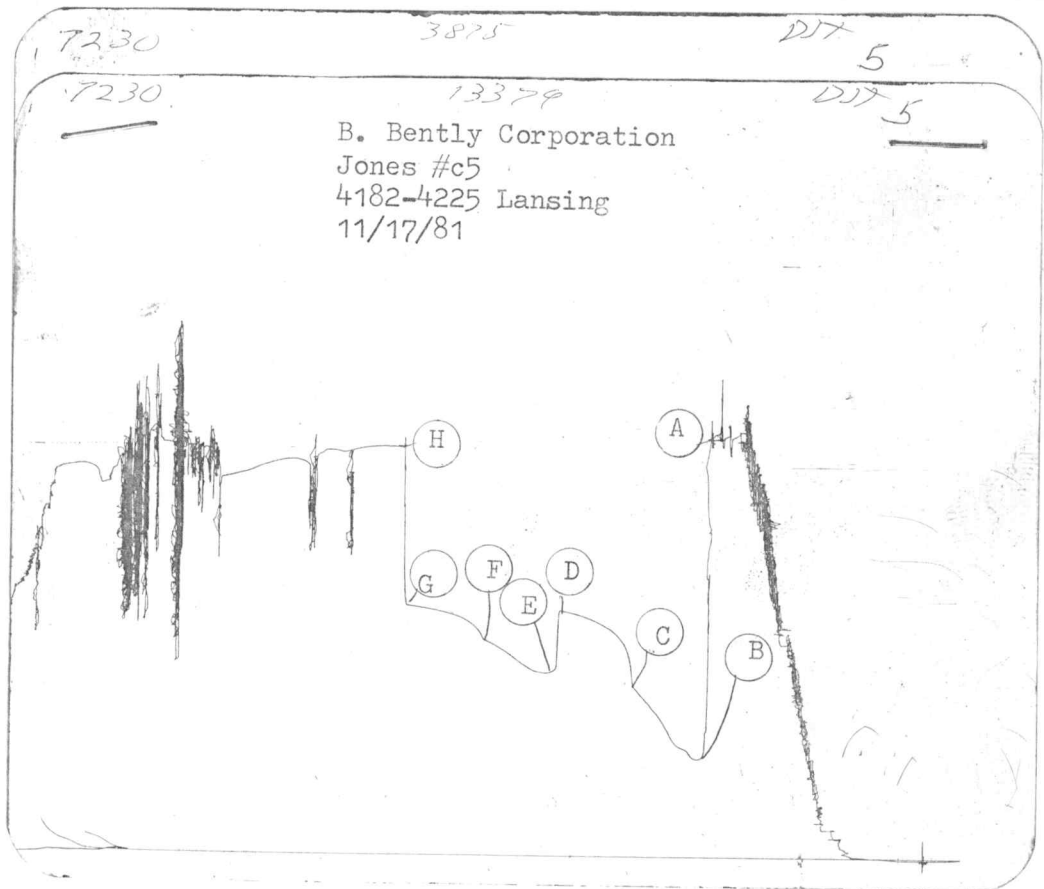
This is actual recorder chart.

POINT	PRESSURE		P.S.I.
	FIELD READING	OFFICE READING	
(A) Initial Hydrostatic Mud	2125	2135	P.S.I.
(B) First Initial Flow Pressure	123	123	P.S.I.
(C) First Final Flow Pressure	216	216	P.S.I.
(D) Initial Closed-in Pressure	1336	1346	P.S.I.
(E) Second Initial Flow Pressure	237	237	P.S.I.
(F) Second Final Flow Pressure	206	206	P.S.I.
(G) Final Closed-in Pressure	1357	1367	P.S.I.
(H) Final Hydrostatic Mud	2074	2074	P.S.I.



This is actual recorder chart.

POINT	PRESSURE		
	FIELD READING	OFFICE READING	
(A) Initial Hydrostatic Mud	2186	2206	P.S.I.
(B) First Initial Flow Pressure	196	196	P.S.I.
(C) First Final Flow Pressure	196	196	P.S.I.
(D) Initial Closed-in Pressure	1336	1346	P.S.I.
(E) Second Initial Flow Pressure	278	278	P.S.I.
(F) Second Final Flow Pressure	258	258	P.S.I.
(G) Final Closed-in Pressure	1367	1377	P.S.I.
(H) Final Hydrostatic Mud	2155	2176	P.S.I.



This is actual recorder chart.

POINT	PRESSURE		
	FIELD READING	OFFICE READING	
(A) Initial Hydrostatic Mud	2145	2236	P.S.I.
(B) First Initial Flow Pressure	657	556	P.S.I.
(C) First Final Flow Pressure	8083	899	P.S.I.
(D) Initial Closed-in Pressure	1234	1295	P.S.I.
(E) Second Initial Flow Pressure	464	969	P.S.I.
(F) Second Final Flow Pressure	556	1132	P.S.I.
(G) Final Closed-in Pressure	1173	1302	P.S.I.
(H) Final Hydrostatic Mud	2125	2145	P.S.I.