

Mull-Mobil #1 Matkin  
C NE NW Sec. 16-27S-21W  
Ford County, Kansas

Core #1 4905-32, cut and rec. 27'

4905-07½ (2½') cgl., cobbles of ls., dolom., crsly xln. w/cement or intercobble material of sh, marroon and green, waxy.

4907½-12½ (5') clear calcite filled fract. ls., v lt. tan and pale green, faintly mottled, crsly xln, w/subspherical calc rhombs and pseudo oolites much clear calc cement. Clear calcite filled fract. *Stylolites*

Frac filled w/calc., sdy., grn. waxy shale.

4912½-24 (11½') ls., tan w/some pink crsly xln, v fossiliferous w/brachs, bryoz., and crin. stems Ool. shadows. Some ls is sdy fractures, shale filled.

Stylolites and fractures.

Shale (green) partings.

Shale, green, waxy.

Fractures, small shale filled.

Fractures and stylolites, shale filled.

4924-32 (8') Ls., lt. tan to olive-tan, med. xln, sli sdy & glauc., sli fossil (crse crin stems)

Stylolities and shale partings.

Frac. filled w/clear calcite and shale.

Frac. and stylolites

5

Mull Drilling and Mobil Oil Co.: No. 1 Matkin; C NE NW, 16-27-21W,  
Ford County

4911-15'

Neoprioniodus tulensis  
Taphrognathus varians

4916-20'

Taphrognathus varians

4921-25'

Taphrognathus varians

4926-30'

Gnathodus texanus  
Spathognathodus penescitulus  
Taphrognathus varians

(R) #1 Matkin; Mull Drlg. Co.; G, NE, NW 16-27-21W; Ford Co., Kansas  
Tops: Cherokee - 4804\*  
Spurgeon - 4909\*

4904\* = no specimens.  
4907-08\* = no specimens.  
4909\* = no specimens.

*Salon*

4910\*  
(1) Ligonodina

4912-13\* = no specimens.

4914\*  
(1) Taphrognathus  
(1) Neoprioniodus tulensis ?

4915\*  
(1) Ligonodina

4915-16\* = no specimens.

4917\*  
(1) Taphrognathus varians

4918\* = no specimens.  
4920\* = no specimens.  
4921\* = no specimens.  
4922\* = no specimens.  
4922-23\* = no specimens.

TOTALS: 23 samples  
14 specimens.

4924\*  
(2) Taphrognathus varians

4925\* = no specimens.  
4925-26\* = no specimens.  
4927\* = no specimens.  
4928-29\* = no specimens.

4929\*  
(3) Taphrognathus varians  
(1) Spathognathodus

4930\* = no specimens.  
4930-31\* = no specimens.

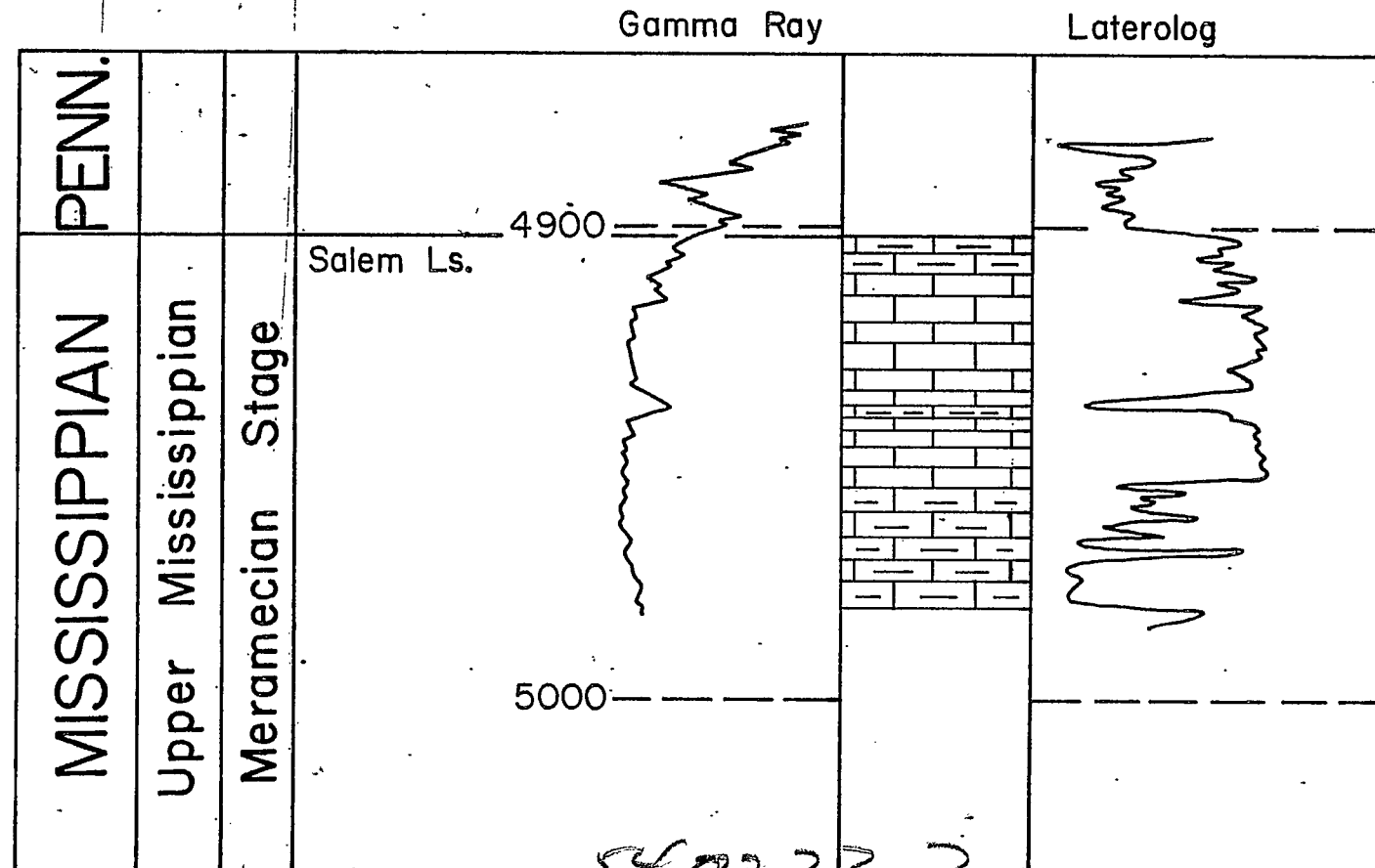
4931\*  
(2) Gnathodus texanus  
(1) Taphrognathus varians

MULL DRLG. CO. INC.

NO. 1 MATKIN

Sec. 16, T. 27 S., R 21 W. Ford Co.

Elev. 2347 ft.



549277



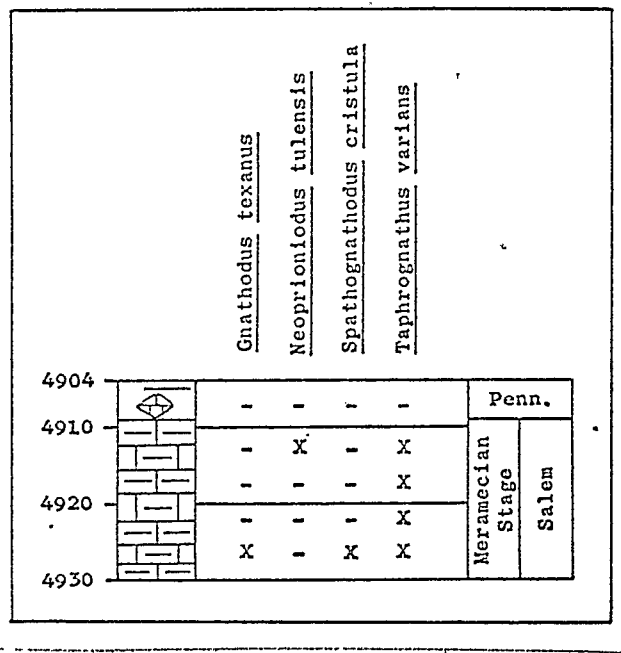


Figure 10. #1 Matkin, elevation 2347 feet. Stratigraphic interval sampled and conodont species recovered.

~~J. N. Mehl~~

~~W. J. ...?~~  
G. #1 Matkin; Mull Drilling Co.; C NE NW sec. 16,  
T. 27 S., R. 21 W.; (Ford) County, Kansas (Fig. 10).

The drillers log identifies the top of the Salem Form-  
ation at a depth of 4909 feet. The predominance of Taphro-  
gnathus varians Branson and Mehl over Gnathodus texanus  
Roundy substantiates this identification, within the upper  
portion of the T. varians - Apatognathus? Assemblage Zone.  
No specimens were recovered above 4909 feet, and thus the  
top of the Mississippian section cannot be ascertained.