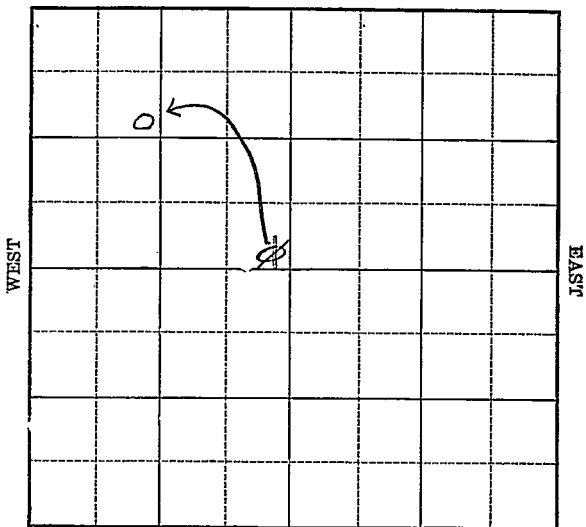


Map No. Kansas Sec. 25 Twp. 27 R. 7W

Well No. 1 Farm Kingman

Allison & Fitzgerald company

NORTH



SOUTH

Location \_\_\_\_\_

Drilling Remarks \_\_\_\_\_  
\_\_\_\_\_  
\_\_\_\_\_  
\_\_\_\_\_  
\_\_\_\_\_  
\_\_\_\_\_  
\_\_\_\_\_  
\_\_\_\_\_  
\_\_\_\_\_  
\_\_\_\_\_  
\_\_\_\_\_

Rig Up \_\_\_\_\_

Drilling Remarks \_\_\_\_\_  
\_\_\_\_\_  
\_\_\_\_\_  
\_\_\_\_\_  
\_\_\_\_\_  
\_\_\_\_\_  
\_\_\_\_\_  
\_\_\_\_\_  
\_\_\_\_\_  
\_\_\_\_\_  
\_\_\_\_\_

**RECORD**

Cased \_\_\_\_\_ in. \_\_\_\_\_ ft.

Sand \_\_\_\_\_

Gas \_\_\_\_\_

Oil \_\_\_\_\_

Total Depth \_\_\_\_\_

**PRODUCTION**

1st 24 hrs. Nat. \_\_\_\_\_

1st 24 hrs. after shot \_\_\_\_\_

Gas \_\_\_\_\_ cu. ft.

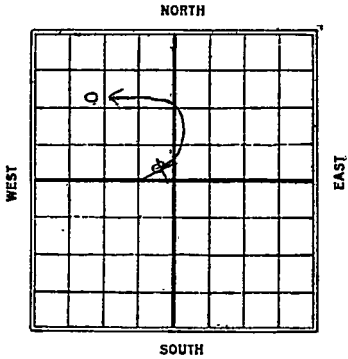
Dry Hole \_\_\_\_\_

Abandoned \_\_\_\_\_

Map No. Kansas Sec. 25 Twp. 27 R. 7<sup>W</sup>

Well No. 1 Farm Allison & Fritz Williams Company

1090 Ft. from N. Line  
~~300~~ Ft. from S. Line  
~~300~~ Ft. from E. Line  
1090 Ft. from W. Line



Date	15916 <sup>th</sup>	REPORT
12/9	Location	
10/1		
4/14	Drilling	3095
4/30	"	3400
5/5	"	3570
5/12	Running 6" at	3673'
5/21	Set 4 1/4" @	3849
	Top Lime	3879
	Hole Caving 25 ft off bottom	(2el)
5/27	3915 in shale	
	Top chat	3879
	Out chat	3905' (2el)
5/26	Lime 3887 T.D. 3921	lime
	pulling 4 1/2" pipe to underream	
	6 1/4" to top of lime	
6/2	T.D. 3921 U.T. 6 1/4"	
6/9	Drill 4000'	
6/16	T.D. 4010 run 4 1/2"	
6/23	Drill 4038	
7/1	Top Wilcox 4280	T.D. 4283
	H.F.W. (2el)	

7114

7/21 Top Wilcot 4281-4293  
H.F.W.

3829  
1571  
2308

4281.  
1571  
2710

Map No. *KANSAS* Sec. *25* Twp. *27* R. *7W*

Well No. *1*

*Collison & Fitzwilliam* Company  
Contractor

SECTION PLAT

----- Ft. from N. Line

*300* Ft. from S. Line

*300* Ft. from E. Line

----- Ft. from W. Line

		<i>0</i>	

FIRST REPORTS

Location -----

Rig up -----

Drilling and Remarks:

*Location*

RECORD

Cased ----- in., ----- ft.

Sand -----

Gas -----

Oil -----

Total Depth -----

PRODUCTION

1st 24 hrs. Nat. -----

1st 24 hrs. after shot -----

Gas ----- Cu. Ft.

Dry Hole -----

Abandoned -----

Date

*DEC 9 1925*

*S. J. LEWIS* Scout

van  
for



Chas.  
S. H.  
I. H.  
W. H.

Returned	
Cards	<i>AB</i>
Tracing	
France Map	<i>R</i>
Scarborough Map	<i>X</i>
Moody Map	
Scarborough Plat Book	
Moody Plat Book	

*no wall map  
no Wall map  
no small map*

*No mark*  
*Trig man*

Map No. **KANSAS** Sec. *25* Twp. *27* R. *7W*

Well No. *J. A. Wilkerson*

*Callison & Fitzwilliam* Company

Contractor

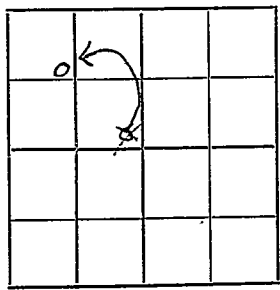
**SECTION PLAT**

*1090* Ft. from N. Line

\_\_\_\_\_ Ft. from S. Line

\_\_\_\_\_ Ft. from E. Line

*1090* Ft. from W. Line



*Correction*

Location \_\_\_\_\_

Rig up \_\_\_\_\_

Drilling and Remarks:

*Loc report*  
*SE NW.*  
*Should be*  
*SE NW. NW.*

**RECORD**

Cased \_\_\_\_\_ in., \_\_\_\_\_ ft.

Sand \_\_\_\_\_

Gas \_\_\_\_\_

Oil \_\_\_\_\_

Total Depth \_\_\_\_\_

**PRODUCTION**

1st 24 hrs. Nat. \_\_\_\_\_

1st 24 hrs. after shot \_\_\_\_\_

Gas \_\_\_\_\_ Cu. Ft.

Dry Hole \_\_\_\_\_

Abandoned \_\_\_\_\_

Date

**JAN 13 1926**  
\_\_\_\_\_ *192* \_\_\_\_\_

**S. J. LEWIS** \_\_\_\_\_ Scout

*OTO was only  
McDonald's copy*

Returned.....	<i>15</i>
Cards.....	<i>1</i>
Tracing <i>McInerney</i>	
France Map <i>McInerney</i>	
Scarborough Map <i>McInerney</i>	
Moody Map <i>McInerney</i>	
Scarborough Plat Book.....	
Moody Plat Book.....	

Map No. KANSAS Sec. 25 Twp. 27 R. 7W

Well No. J. H. Wilkinson

Allison & Fitzwilliams Company

Contractor

SECTION PLAT

0			

1190 Ft. from N. Line

----- Ft. from S. Line

----- Ft. from E. Line

1190 Ft. from W. Line

**ABANDONED**

Location -----

Rig up -----

Drilling and Remarks:

*Top of Hilco  
#281. TII #293  
HFV  
J & A.*

RECORD

Cased ----- in., ----- ft.

Sand -----

Gas -----

Oil -----

Total Depth -----

PRODUCTION

1st 24 hrs. Nat. -----

1st 24 hrs. after shot -----

Gas ----- Cu. Ft.

Dry Hole -----

Abandoned -----

Date

JUL 21 1926

S. J. LEWIS Scout

Returned

Cards

Tracing

France Map

Scarborough Map

Moody Map

Scarborough Plat Book

Moody Plat Book

MAP No. \_\_\_\_\_ SEC. 78 TWP. 27S R. 7W

WELL No. 1 1/2 Extension

Alison & J. Thompson COMPANY

\_\_\_\_\_ CONTRACTOR

*no well info.*

**SECTION PLAT**

⊙			

\_\_\_\_\_ FT. FROM N. LINE

\_\_\_\_\_ FT. FROM S. LINE

\_\_\_\_\_ FT. FROM E. LINE

\_\_\_\_\_ FT. FROM W. LINE

**RECORD**

LOCATION \_\_\_\_\_

CASED \_\_\_\_\_ IN. \_\_\_\_\_ FT.

RIG UP \_\_\_\_\_

SAND \_\_\_\_\_

DRILLING AND REMARKS:

GAS \_\_\_\_\_

OIL \_\_\_\_\_

TOTAL DEPTH 2793

**PRODUCTION**

1ST 24 HRS. NAT. \_\_\_\_\_

1ST 24 HRS. AFTER SHOT \_\_\_\_\_

GAS \_\_\_\_\_ CU. FT.

DRY HOLE

ABANDONED

DATE

7/9 1926

SCOUT