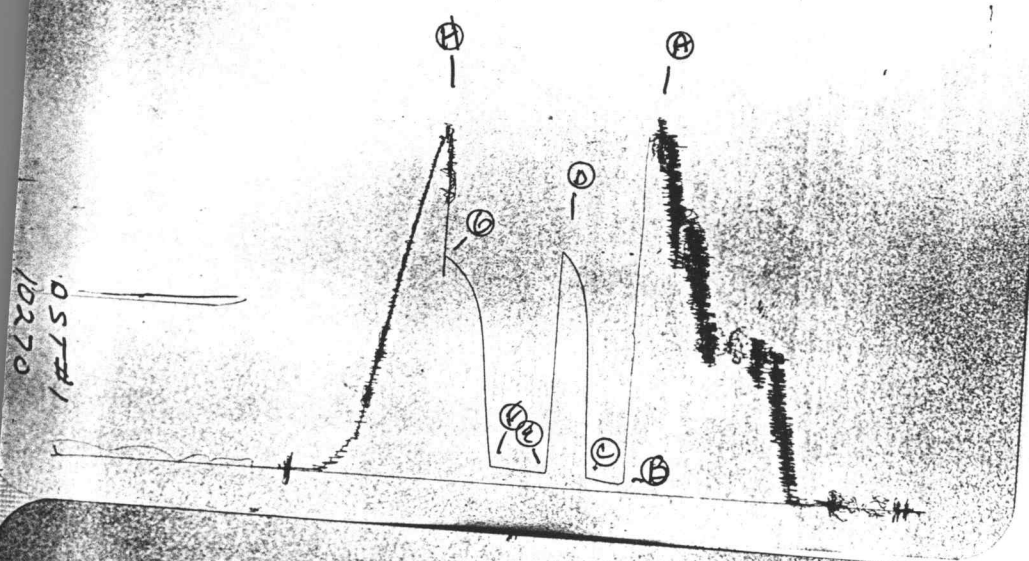
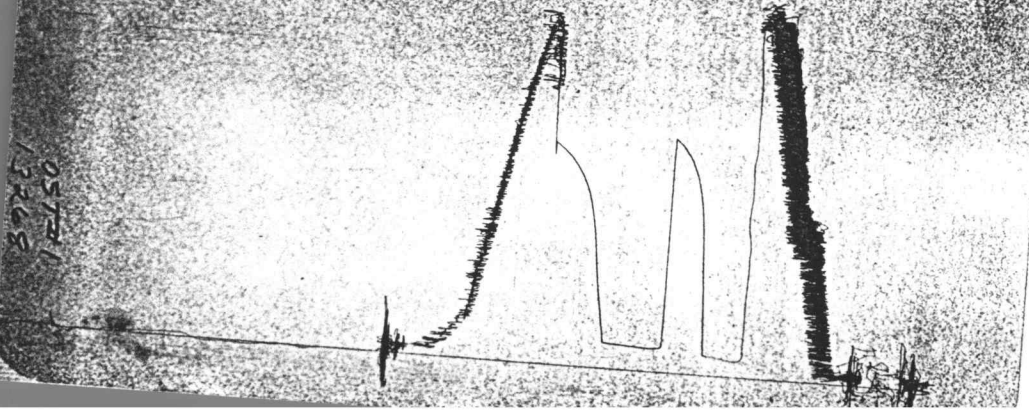


JK # 14515  
I



JK # 14515



OST #1  
13268

# FORMATION TEST REPORT



Home Office:

Wichita, Kansas 67201

P.O. Box 1599

Phone (316) 262-5861

WESTERN TESTING CO. INC.  
SUBSURFACE PRESSURE SURVEY

DATE : 7-28-88 TICKET : 14515  
CUSTOMER : MCGINNESS OIL COMPANY LEASE : WAYNE WILLIAMS  
WELL : #1 TEST: 1 GEOLOGIST : D MCGINNESS  
ELEVATION : 1831 KB FORMATION : KANSAS CITY  
SECTION : 8 TOWNSHIP : 27S  
RANGE : 11W COUNTY : PRATT STATE : KANSAS  
GAUGE SN# : 10270 RANGE : 4150 CLOCK : 12

INTERVAL FROM : 3898 TO : 3912 TOTAL DEPTH : 3912  
DEPTH OF SELECTIVE ZONE :  
PACKER DEPTH : 3893 SIZE : 6.63  
PACKER DEPTH : 3898 SIZE : 6.63  
PACKER DEPTH : SIZE :  
PACKER DEPTH : SIZE :

DRILLING CON. : DUKE RIG 2  
MUD TYPE : CHEMICAL VISCOSITY : 43  
WEIGHT : 9 WATER LOSS (CC) : 14  
CHLORIDES (PPM) : 3000  
JARS-MAKE : WTC SERIAL NUMBER : 417  
DID WELL FLOW ? : GAS REVERSED OUT ? : NO

DRILL COLLAR LENGTH : 0 FT I.D. inch : 0.00  
WEIGHT PIPE LENGTH : 290 FT I.D. inch : 2.70  
DRILL PIPE LENGTH : 3583 FT I.D. inch : 3.80  
TEST TOOL LENGTH : 25 FT TOOL SIZE : 5.50  
ANCHOR LENGTH : 14 FT ANCHOR SIZE : 5.50  
SURFACE CHOKE SIZE : .75 IN BOTTOM CHOKE SIZE : .75  
MAIN HOLE SIZE : 7.875 IN TOOL JOINT SIZE : 4.5 XH

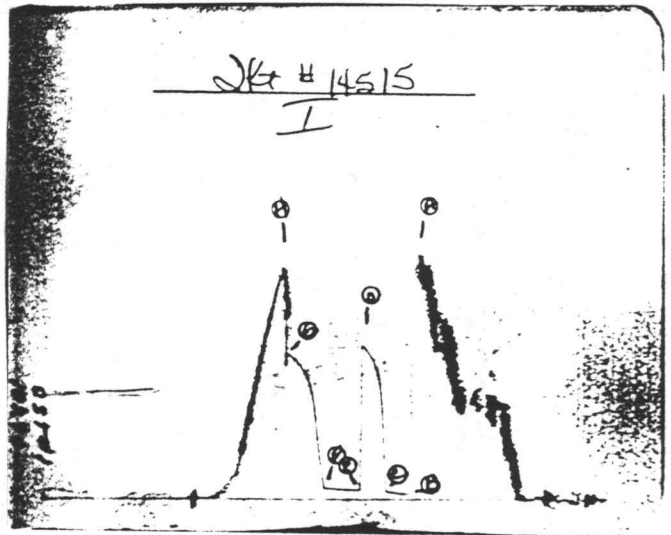
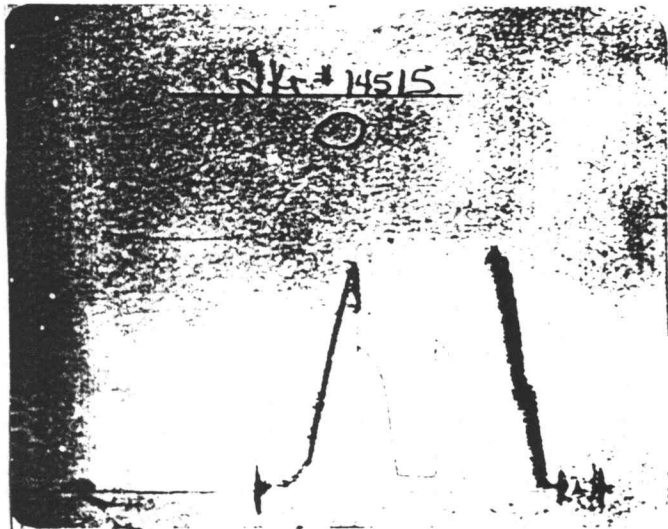
BLOW COMMENT #1 : INITIAL FLOW-STRONG BLOW IN 1 MINUTE.  
BLOW COMMENT #2 : FINAL FLOW-STRONG BLOW-GAS TO SURFACE IN 8 MINUTES.  
BLOW COMMENT #3 : SEE ATTACHED FLOW CHART.  
BLOW COMMENT #4 :

RECOVERED : 180 FT OF: CLEAN GASSY OIL (GRAVITY 34)  
 RECOVERED : 90 FT OF: MUDDY GASSY OIL  
 25% OIL-53% GAS-2% WATER-20% MUD

Total Barrels Fluid = 1.91  
 Total Fluid Prod Rate = 39.33 BFPD  
 Indicated Oil Rate = 29.57 BOPD  
 Indicated Wtr Rate = 0.52 BWPD  
 Corrected Oil Rate = 18.10 BOPD  
 Corrected Wtr Rate = 0.32 BWPD

REMARK 1 :  
 REMARK 2 :  
 REMARK 3 :  
 REMARK 4 :

SET PACKER(S) : 2:40 PM TIME STARTED OFF BOTTOM : 5:10 PM  
 WELL TEMPERATURE : 110  
 INITIAL HYDROSTATIC PRESSURE (A) 1929  
 INITIAL FLOW PERIOD MIN: 30 (B) 42 PSI TO (C) : 63  
 INITIAL CLOSED IN PERIOD MIN: 30 (D) 1275  
 FINAL FLOW PERIOD MIN: 40 (E) 75 PSI TO (F) : 88  
 FINAL CLOSED IN PERIOD MIN: 45 (G) 1213  
 FINAL HYDROSTATIC PRESSURE (H) 1902



GAS FLOW REPORT

Date : 7-28-88	Ticket # : 14515
Customer : McGINNESS OIL COMPANY	Lease : WAYNE WILLIAMS
Well : #1            Test : 1	Geologist : D McGINNESS
Elevation (KB) : 1831      Formation : KANSAS CITY	
Section : 8            Township : 27S	
Range : 11W            County : PRATT	State : KANSAS
Gauge SN # : 10270      Range : 4150	Clock : 12

TIME GAUGE (MIN)	TESTER TYPE	ORFICE SIZE	PRESSURE (PSI)	FLOW DESCRIPTION
---------------------	-------------	----------------	-------------------	------------------

PRE FLOW  
=====

SECOND FLOW  
=====

10	MERLA	1/2"	7" of WTR	16700 CFPD
15			8	17200 CFPD
20			7	16700 CFPD
25			6	15400 CFPD
30			5.5	14700 CFPD
35			5.5	14700 CFPD
40			5	14100 CFPD
45			4.5	13300 CFPD

Gas Bottle SN # : 30 GB  
 Date Bottle Filled : 7-28-88  
 Date to be Invoiced :

WESTERN TESTING CO. INC.  
WICHITA-KANSAS

Pressure Transient Report

COMPANY : MCGINNESS OIL COMPANY  
RIG : PRATT-KANSAS  
FIELD : WAYNE WILLIAMS  
WELL : #1  
DATE : 7-28-88  
GAUGE NO : 10270

OPERATIONAL COMMENTS

COMPANY : MCGINNESS OIL COMPANY  
 WELL : #1  
 GAUGE # : 10270  
 DATE : 28/ 7/88

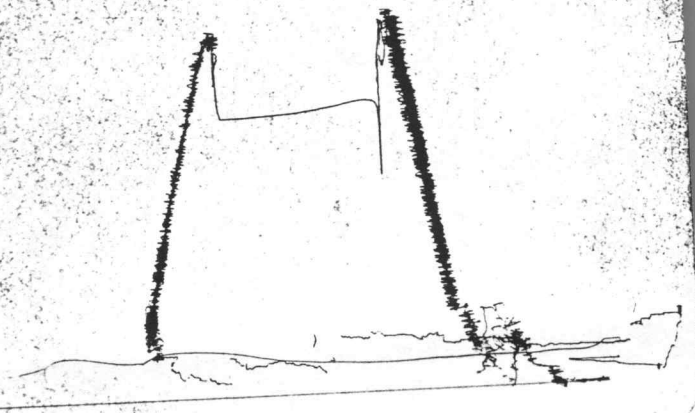
FIELD : WAYNE WILLIAMS  
 JOB # : 14515  
 DEPTH : 3912  
 TEST :

DATA No.	REAL TIME HR:MN:SS	ELAPSE TIME DELTA HOURS	PRESSURE PSIG	TEMP DEG F	DELTA P Pi-P(i-1)
INITIAL FLOW					
2	2:40: 0	0.000	42.000	110.00	0.000
3	2:44:59	0.083	42.000	110.00	0.000
4	2:50: 0	0.167	44.000	110.00	2.000
5	2:55: 0	0.250	49.000	110.00	5.000
6	2:59:59	0.333	55.000	110.00	6.000
7	3: 5: 0	0.417	60.000	110.00	5.000
8	3:10: 0	0.500	63.000	110.00	3.000
INITIAL SHUT-IN					
9	3:13: 0	0.550	443.000	110.00	380.000
10	3:16: 0	0.600	831.000	110.00	388.000
11	3:19: 0	0.650	1000.000	110.00	169.000
12	3:22: 0	0.700	1087.000	110.00	87.000
13	3:25: 0	0.750	1141.000	110.00	54.000
14	3:28: 0	0.800	1186.000	110.00	45.000
15	3:31: 0	0.850	1217.000	110.00	31.000
16	3:34: 0	0.900	1244.000	110.00	27.000
17	3:37: 0	0.950	1267.000	110.00	23.000
18	3:40: 0	1.000	1275.000	110.00	8.000
FINAL FLOW					
19	3:41: 0	1.017	75.000	110.00	-1200.000
20	3:44:59	1.083	75.000	110.00	0.000
21	3:50: 0	1.167	75.000	110.00	0.000
22	3:55: 0	1.250	79.000	110.00	4.000
23	3:59:59	1.333	81.000	110.00	2.000
24	4: 5: 0	1.417	83.000	110.00	2.000
25	4:10: 0	1.500	85.000	110.00	2.000
26	4:14:59	1.583	87.000	110.00	2.000
27	4:20: 0	1.667	88.000	110.00	1.000
FINAL SHUT-IN					
28	4:23: 0	1.717	233.000	110.00	145.000
29	4:26: 0	1.767	402.000	110.00	169.000
30	4:29: 0	1.817	601.000	110.00	199.000
31	4:32: 0	1.867	794.000	110.00	193.000
32	4:35: 0	1.917	900.000	110.00	106.000
33	4:38: 0	1.967	970.000	110.00	70.000
34	4:41: 0	2.017	1026.000	110.00	56.000
35	4:44: 0	2.067	1066.000	110.00	40.000
36	4:47: 0	2.117	1099.000	110.00	33.000
37	4:50: 0	2.167	1126.000	110.00	27.000
38	4:53: 0	2.217	1151.000	110.00	25.000
39	4:56: 0	2.267	1173.000	110.00	22.000
40	4:59: 0	2.317	1189.000	110.00	16.000
41	5: 2: 0	2.367	1205.000	110.00	16.000
42	5: 5: 0	2.417	1213.000	110.00	8.000

WESTERN TESTING CO. INC.

JK # 14516  
Below Straddle

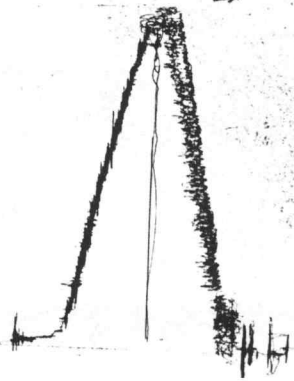
03742



JK # 14516

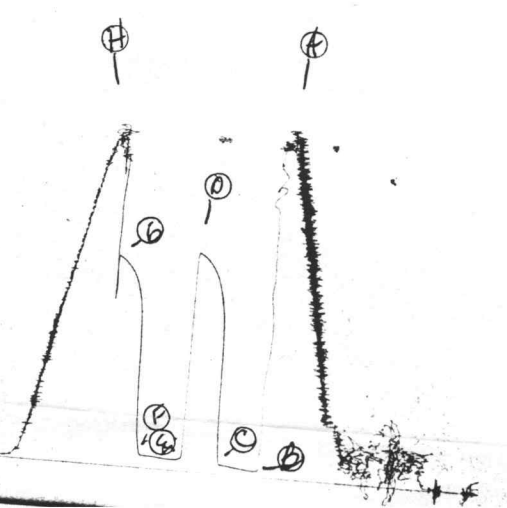
0

0574.2.8  
13268

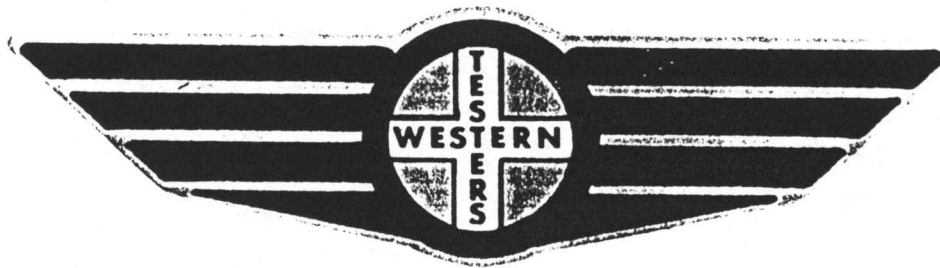


SK# 14516  
I

OST# 2  
10370



# FORMATION TEST REPORT



Home Office:

Wichita, Kansas 67201

P.O. Box 1599

Phone (316) 262-5861

WESTERN TESTING CO. INC.  
SUBSURFACE PRESSURE SURVEY

DATE : 7-28-88  
CUSTOMER : MCGINNESS OIL COMPANY  
WELL : #1 TEST: 2  
ELEVATION : 1831 KB  
SECTION : 8  
RANGE : 11W COUNTY : PRATT  
GAUGE SN# : 10270 RANGE : 4150  
TICKET : 14516  
LEASE : WAYNE WILLIAMS  
GEOLOGIST : D MCGINNESS  
FORMATION : LANSING  
TOWNSHIP : 27S  
STATE : KANSAS  
CLOCK : 12

INTERVAL FROM : 3698 TO : 3712 TOTAL DEPTH : 3912  
DEPTH OF SELECTIVE ZONE :  
PACKER DEPTH : 3698 SIZE : 6.63  
PACKER DEPTH : 3712 SIZE : 6.63  
PACKER DEPTH : SIZE :  
PACKER DEPTH : SIZE :

DRILLING CON. : DUKE RIG 2  
MUD TYPE : CHEMICAL VISCOSITY : 43  
WEIGHT : 9 WATER LOSS (CC) : 14  
CHLORIDES (PPM) : 3000  
JARS-MAKE : WTC SERIAL NUMBER : 417  
DID WELL FLOW ? : NO REVERSED OUT ? : NO

DRILL COLLAR LENGTH : 0 FT I.D. inch : 0.00  
WEIGHT PIPE LENGTH : 60 FT I.D. inch : 2.70  
DRILL PIPE LENGTH : 3613 FT I.D. inch : 3.80  
TEST TOOL LENGTH : 25 FT TOOL SIZE : 5.50  
ANCHOR LENGTH : 14 FT ANCHOR SIZE : 5.50  
SURFACE CHOKE SIZE : .75 IN BOTTOM CHOKE SIZE : .75  
MAIN HOLE SIZE : 7.875 IN TOOL JOINT SIZE : 4.5 XH

BLOW COMMENT #1 : INITIAL FLOW-WEAK BLOW THROUGHOUT-1/4" TO 2" BLOW.  
BLOW COMMENT #2 : FINAL FLOW-WEAK BLWO THROUGHOUT-1" BLOW.  
BLOW COMMENT #3 :  
BLOW COMMENT #4 :

RECOVERED : 80 FT OF: MUDDY WATER  
20% MUD-80% WTR  
RECOVERED : 1 FT OF: CLEAN OIL (ON TOP)

CHLORIDES: 58000 PPM

Total Barrels Fluid = 0.72  
Total Fluid Prod Rate = 17.27 BFPD  
Indicated Oil Rate = 0.21 BOPD  
Indicated Wtr Rate = 14.71 BWPD

REMARK 1 :  
REMARK 2 :  
REMARK 3 :  
REMARK 4 :

SET PACKER(S) : 9:10 PM

WELL TEMPERATURE : 111

INITIAL HYDROSTATIC PRESSURE

INITIAL FLOW PERIOD MIN: 30

INITIAL CLOSED IN PERIOD MIN: 27

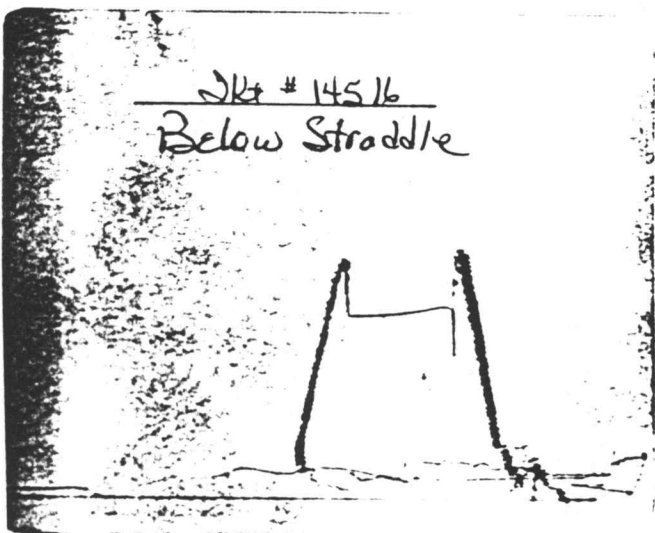
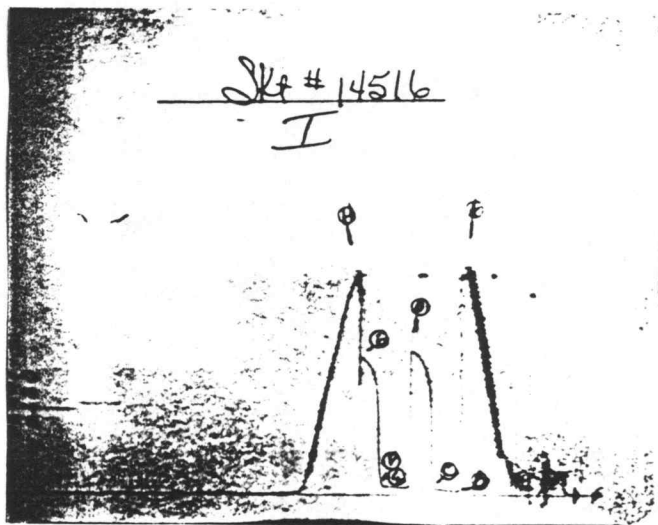
FINAL FLOW PERIOD MIN: 30

FINAL CLOSED IN PERIOD MIN: 27

FINAL HYDROSTATIC PRESSURE

TIME STARTED OFF BOTTOM : 11:10 PM

(A) 1796  
(B) 31 PSI TO (C) : 51  
(D) 1192  
(E) 61 PSI TO (F) : 70  
(G) 1146  
(H) 1782



WESTERN TESTING CO. INC.  
WICHITA-KANSAS

Pressure Transient Report  
-----

COMPANY : McGINNESS OIL COMPANY  
RIG : PRATT-KANSAS  
FIELD : WAYNE WILLIAMS  
WELL : #1  
DATE : 7-28-88  
GAUGE NO : 10270

OPERATIONAL COMMENTS

COMPANY : MCGINNESS OIL COMPANY  
 WELL : #1  
 GAUGE # : 10270  
 DATE : 28/ 7/88

FIELD : WAYNE WILLIAMS  
 JOB # : 14516  
 DEPTH : 3912  
 TEST :

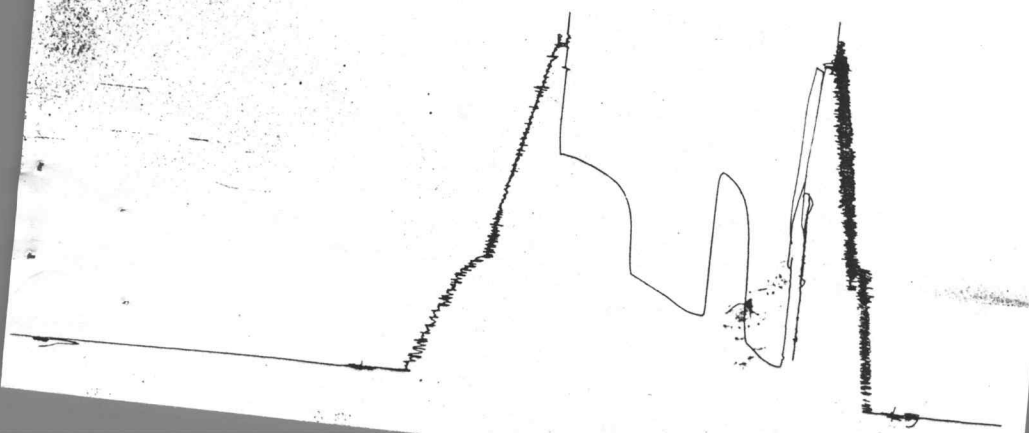
DATA No.	REAL TIME HR:MN:SS	ELAPSE TIME DELTA HOURS	PRESSURE PSIG	TEMP DEG F	DELTA P Pi-P(i-1)
INITIAL FLOW					
2	9:10: 0	0.000	31.000	111.00	0.000
3	9:14:59	0.083	31.000	111.00	0.000
4	9:20: 0	0.167	34.000	111.00	3.000
5	9:25: 0	0.250	38.000	111.00	4.000
6	9:29:59	0.333	42.000	111.00	4.000
7	9:35: 0	0.417	47.000	111.00	5.000
8	9:40: 0	0.500	51.000	111.00	4.000
INITIAL SHUT-IN					
9	9:43: 0	0.550	666.000	111.00	615.000
10	9:46: 0	0.600	919.000	111.00	253.000
11	9:49: 0	0.650	1012.000	111.00	93.000
12	9:52: 0	0.700	1076.000	111.00	64.000
13	9:55: 0	0.750	1117.000	111.00	41.000
14	9:58: 0	0.800	1147.000	111.00	30.000
15	10: 1: 0	0.850	1170.000	111.00	23.000
16	10: 4: 0	0.900	1183.000	111.00	13.000
17	10:11: 0	1.017	1192.000	111.00	9.000
FINAL FLOW					
18	10:12: 0	1.033	61.000	111.00	-1131.000
19	10:16: 0	1.100	61.000	111.00	0.000
20	10:21: 0	1.183	61.000	111.00	0.000
21	10:26: 0	1.267	63.000	111.00	2.000
22	10:31: 0	1.350	67.000	111.00	4.000
23	10:36: 0	1.433	69.000	111.00	2.000
24	10:41: 0	1.517	70.000	111.00	1.000
FINAL SHUT-IN					
25	10:44: 0	1.567	147.000	111.00	77.000
26	10:47: 0	1.617	632.000	111.00	485.000
27	10:50: 0	1.667	919.000	111.00	287.000
28	10:53: 0	1.717	1002.000	111.00	83.000
29	10:56: 0	1.767	1056.000	111.00	54.000
30	10:59: 0	1.817	1087.000	111.00	31.000
31	11: 2: 0	1.867	1109.000	111.00	22.000
32	11: 5: 0	1.917	1132.000	111.00	23.000
33	11: 8: 0	1.967	1146.000	111.00	14.000

WESTERN TESTING CO. INC.

2020 037#3

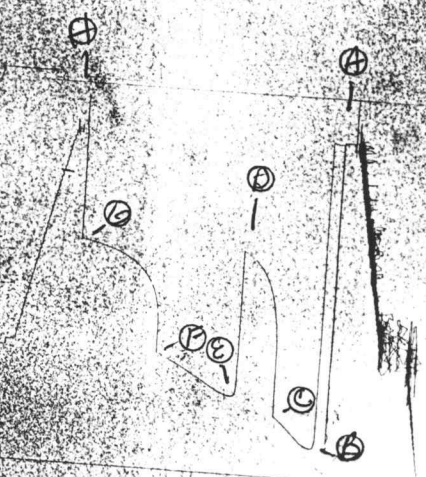
JKT #13723

0

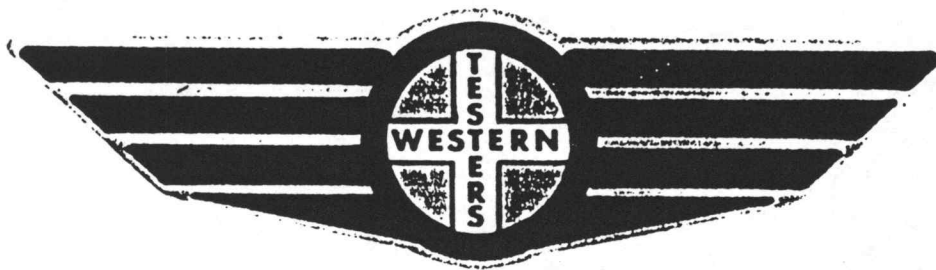


JK # 13723

I



# FORMATION TEST REPORT



Home Office:

Wichita, Kansas 67201

P.O. Box 1599

Phone (316) 262-5861

WESTERN TESTING CO. INC.  
SUBSURFACE PRESSURE SURVEY

DATE : 7-29-88  
CUSTOMER : MCGINNESS OIL COMPANY  
WELL : #1 TEST: 3  
ELEVATION : 1831 KB  
SECTION : 8  
RANGE : 11W COUNTY : PRATT  
GAUGE SN# : 4332 RANGE : 4200  
TICKET : 13723  
LEASE : WAYNE WILLIAMS  
GEOLOGIST : D MCGINNESS  
FORMATION : KANSAS CITY  
TOWNSHIP : 27S  
STATE : KANSAS  
CLOCK : 12

INTERVAL FROM : 3935 TO : 3950 TOTAL DEPTH : 3950  
DEPTH OF SELECTIVE ZONE :  
PACKER DEPTH : 3930 SIZE : 6.63  
PACKER DEPTH : 3935 SIZE : 6.63  
PACKER DEPTH : SIZE :  
PACKER DEPTH : SIZE :

DRILLING CON. : DUKE RIG 2  
MUD TYPE : CHEMICAL VISCOSITY : 36  
WEIGHT : 9.0 WATER LOSS (CC) : 14  
CHLORIDES (PPM) : 3000  
JARS-MAKE : WTC SERIAL NUMBER : 411  
DID WELL FLOW ? : NO REVERSED OUT ? : NO

DRILL COLLAR LENGTH : 0 FT I.D. inch : 0.00  
WEIGHT PIPE LENGTH : 285 FT I.D. inch : 2.50  
DRILL PIPE LENGTH : 3622 FT I.D. inch : 3.80  
TEST TOOL LENGTH : 28 FT TOOL SIZE : 5.50  
ANCHOR LENGTH : 15 FT ANCHOR SIZE : 5.50  
SURFACE CHOKE SIZE : .75 IN BOTTOM CHOKE SIZE : .75  
MAIN HOLE SIZE : 7.875 IN TOOL JOINT SIZE : 4.5 XH

BLOW COMMENT #1 : INITIAL FLOW-STRONG BLOW IN 1 MINUTE.  
BLOW COMMENT #2 : FINAL FLOW-STRONG BLOW-WOULDN'T MAINTAIN 2" FLOW LINE.  
BLOW COMMENT #3 :  
BLOW COMMENT #4 :

RECOVERED : 300 FT OF: GAS & OIL CUT WATERY MUD  
30% GAS-20% OIL-20% WTR-40% MUD  
RECOVERED : 1080 FT OF: OIL & GAS CUT WATER

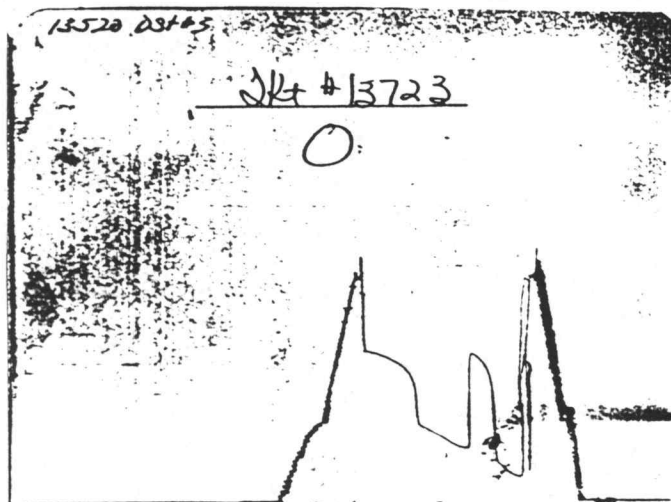
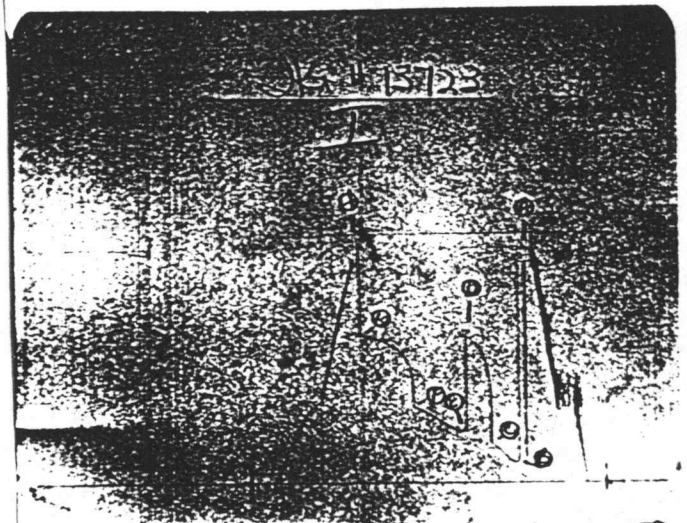
Total Barrels Fluid = 17.09  
Total Fluid Prod Rate = 273.43 BFPD  
Indicated Oil Rate = 31.70 BOPD  
Indicated Wtr Rate = 112.94 BWPD

REMARK 1 :  
REMARK 2 : RECOVERED 840 FEET OF GAS ABOVE FLUID.  
REMARK 3 :  
REMARK 4 :

SET PACKER(S) : 8:45 AM  
WELL TEMPERATURE : 130  
INITIAL HYDROSTATIC PRESSURE  
INITIAL FLOW PERIOD MIN: 30  
INITIAL CLOSED IN PERIOD MIN: 30  
FINAL FLOW PERIOD MIN: 60  
FINAL CLOSED IN PERIOD MIN: 63  
FINAL HYDROSTATIC PRESSURE

TIME STARTED OFF BOTTOM : 11:45 AM

(A) 1894  
(B) 180 PSI TO (C) : 344  
(D) 1256  
(E) 445 PSI TO (F) : 660  
(G) 1265  
(H) 1894



WESTERN TESTING CO. INC.  
WICHITA-KANSAS

Pressure Transient Report  
-----

COMPANY : MCGINNESS OIL COMPANY  
RIG : PRATT-KANSAS  
FIELD : WAYNE WILLIAMS  
WELL : #1  
DATE : 7-29-88  
GAUGE NO : 4332

OPERATIONAL COMMENTS

RECOVERED 840 FEET OF GAS ABOVE FLUID.

COMPANY : MCGINNESS OIL COMPANY  
 WELL : #1  
 GAUGE # : 4332  
 DATE : 29/ 7/88

FIELD : WAYNE WILLIAMS  
 JOB # : 13723  
 DEPTH : 3950  
 TEST :

DATA No.	REAL TIME HR:MN:SS	ELAPSE TIME DELTA HOURS	PRESSURE PSIG	TEMP DEG F	DELTA P $P_i - P(i-1)$
INITIAL FLOW					
2	8:45: 0	0.000	180.000	130.00	0.000
3	8:49:59	0.083	180.000	130.00	0.000
4	8:55: 0	0.167	199.000	130.00	19.000
5	9: 0: 0	0.250	233.000	130.00	34.000
6	9: 4:59	0.333	272.000	130.00	39.000
7	9:10: 0	0.417	307.000	130.00	35.000
8	9:15: 0	0.500	344.000	130.00	37.000
INITIAL SHUT-IN					
9	9:18: 0	0.550	831.000	130.00	487.000
10	9:21: 0	0.600	970.000	130.00	139.000
11	9:24: 0	0.650	1061.000	130.00	91.000
12	9:27: 0	0.700	1114.000	130.00	53.000
13	9:30: 0	0.750	1156.000	130.00	42.000
14	9:33: 0	0.800	1186.000	130.00	30.000
15	9:36: 0	0.850	1210.000	130.00	24.000
16	9:39: 0	0.900	1229.000	130.00	19.000
17	9:42: 0	0.950	1245.000	130.00	16.000
18	9:45: 0	1.000	1256.000	130.00	11.000
FINAL FLOW					
19	9:46: 0	1.017	445.000	130.00	-811.000
20	9:49:59	1.083	445.000	130.00	0.000
21	9:55: 0	1.167	452.000	130.00	7.000
22	10: 0: 0	1.250	469.000	130.00	17.000
23	10: 4:59	1.333	493.000	130.00	24.000
24	10:10: 0	1.417	517.000	130.00	24.000
25	10:15: 0	1.500	539.000	130.00	22.000
26	10:19:59	1.583	560.000	130.00	21.000
27	10:25: 0	1.667	585.000	130.00	25.000
28	10:30: 0	1.750	604.000	130.00	19.000
29	10:34:59	1.833	623.000	130.00	19.000
30	10:40: 0	1.917	640.000	130.00	17.000
31	10:45: 0	2.000	660.000	130.00	20.000
FINAL FLOW					
32	10:48: 0	2.050	910.000	130.00	250.000
33	10:51: 0	2.100	989.000	130.00	79.000
34	10:54: 0	2.150	1040.000	130.00	51.000
35	10:57: 0	2.200	1074.000	130.00	34.000
36	11: 0: 0	2.250	1102.000	130.00	28.000
37	11: 3: 0	2.300	1127.000	130.00	25.000
38	11: 6: 0	2.350	1146.000	130.00	19.000
39	11: 9: 0	2.400	1164.000	130.00	18.000
40	11:12: 0	2.450	1177.000	130.00	13.000
41	11:15: 0	2.500	1189.000	130.00	12.000
42	11:18: 0	2.550	1201.000	130.00	12.000
43	11:21: 0	2.600	1211.000	130.00	10.000
44	11:24: 0	2.650	1220.000	130.00	9.000
45	11:27: 0	2.700	1227.000	130.00	7.000
46	11:30: 0	2.750	1234.000	130.00	7.000
47	11:33: 0	2.800	1240.000	130.00	6.000
48	11:36: 0	2.850	1245.000	130.00	5.000

COMPANY : MCGINNESS OIL COMPANY  
WELL : #1  
GAUGE # : 4332  
DATE : 29/ 7/88

FIELD : WAYNE WILLIAMS  
JOB # : 13723  
DEPTH : 3950  
TEST :

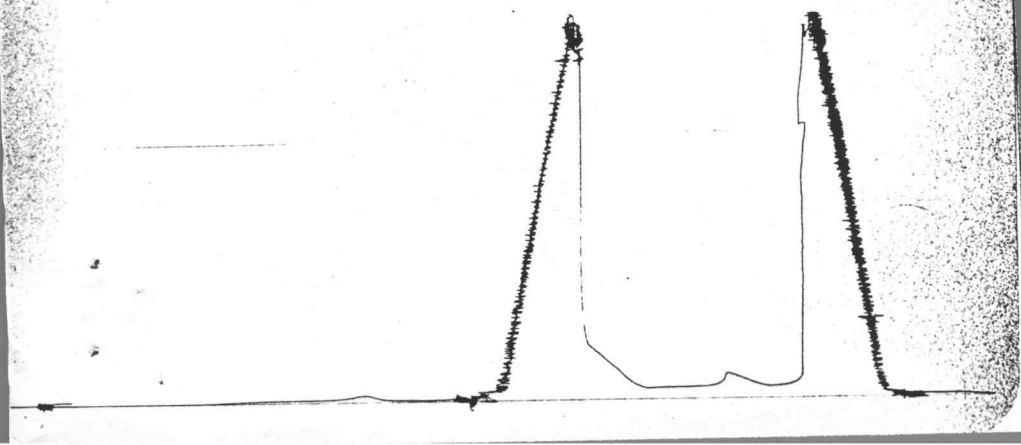
DATA No.	REAL TIME HR:MN:SS	ELAPSE TIME DELTA HOURS	PRESSURE PSIG	TEMP DEG F	DELTA P Pi-P(i-1)
49	11:39: 0	2.900	1250.000	130.00	5.000
50	11:42: 0	2.950	1255.000	130.00	5.000
51	11:45: 0	3.000	1260.000	130.00	5.000
52	11:48: 0	3.050	1265.000	130.00	5.000

WESTERN TESTING CO. INC.

13-520 PST#4

Lot # 13724

0

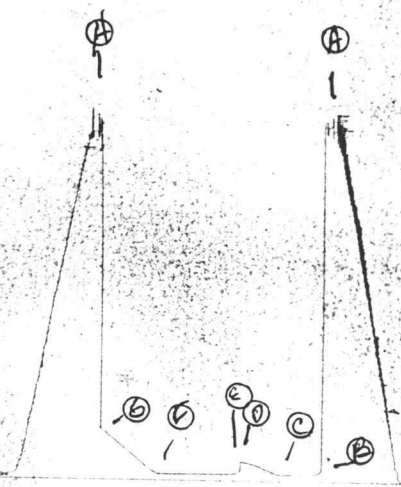


4932 DST#4

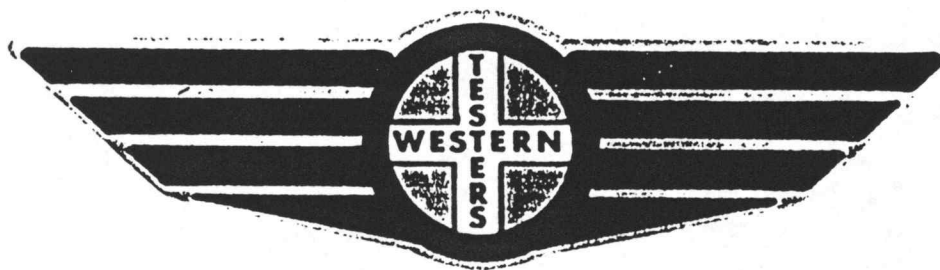


JK # 13724

I



# FORMATION TEST REPORT



Home Office:

Wichita, Kansas 67201

P.O. Box 1599

Phone (316) 262-5861

WESTERN TESTING CO. INC.  
SUBSURFACE PRESSURE SURVEY

DATE : 7-30-88 TICKET : 13724  
CUSTOMER : MCGINNESS OIL COMPANY LEASE : WAYNE WILLIAMS  
WELL : #1 TEST: 4 GEOLOGIST : D MCGINNESS  
ELEVATION : 1831 KB FORMATION : MISSISSIPPIAN  
SECTION : 8 TOWNSHIP : 27S  
RANGE : 11W COUNTY : PRATT STATE : KANSAS  
GAUGE SN# : 4332 RANGE : 4200 CLOCK : 12

INTERVAL FROM : 4084 TO : 4120 TOTAL DEPTH : 4120  
DEPTH OF SELECTIVE ZONE :  
PACKER DEPTH : 4079 SIZE : 6.63  
PACKER DEPTH : 4084 SIZE : 6.63  
PACKER DEPTH : SIZE :  
PACKER DEPTH : SIZE :

DRILLING CON. : DUKE RIG 2  
MUD TYPE : CHEMICAL VISCOSITY : 40  
WEIGHT : 9.0 WATER LOSS (CC) : 14.0  
CHLORIDES (PPM) : 3000  
JARS-MAKE : WTC SERIAL NUMBER : 411  
DID WELL FLOW ? : NO] REVERSED OUT ? : NO

DRILL COLLAR LENGTH : 0 FT I.D. inch : 0.00  
WEIGHT PIPE LENGTH : 285 FT I.D. inch : 2.50  
DRILL PIPE LENGTH : 3771 FT I.D. inch : 3.80  
TEST TOOL LENGTH : 28 FT TOOL SIZE : 5.50  
ANCHOR LENGTH : 36 FT ANCHOR SIZE : 5.50  
SURFACE CHOKE SIZE : .75 IN BOTTOM CHOKE SIZE : .75  
MAIN HOLE SIZE : 7.875 IN TOOL JOINT SIZE : 4.5 XH

BLOW COMMENT #1 : INITIAL FLOW-STRONG BLOW IN 15 MINUTES.  
BLOW COMMENT #2 : FINAL FLOW-STRONG BLOW.  
BLOW COMMENT #3 : NO GAS TO SURFACE.  
BLOW COMMENT #4 :

RECOVERED : 5 FT OF: MUD

Total Barrels Fluid = 0.03  
Total Fluid Prod Rate = 0.49 BFPD  
Indicated Wtr Rate = 0.05 BWPD

REMARK 1 :  
REMARK 2 :  
REMARK 3 :  
REMARK 4 :

SET PACKER(S) : 4:15 AM

TIME STARTED OFF BOTTOM : 7:00 AM

WELL TEMPERATURE : 123

INITIAL HYDROSTATIC PRESSURE

(A) 2006

INITIAL FLOW PERIOD MIN: 30

(B) 35 PSI TO (C) : 35

INITIAL CLOSED IN PERIOD MIN: 30

(D) 106

FINAL FLOW PERIOD MIN: 60

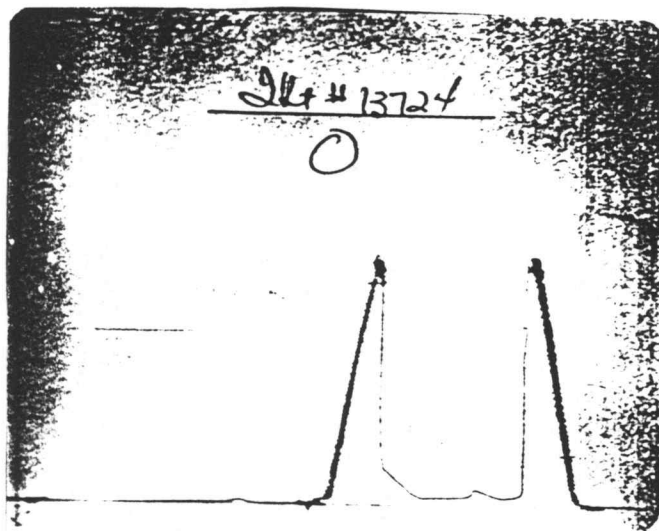
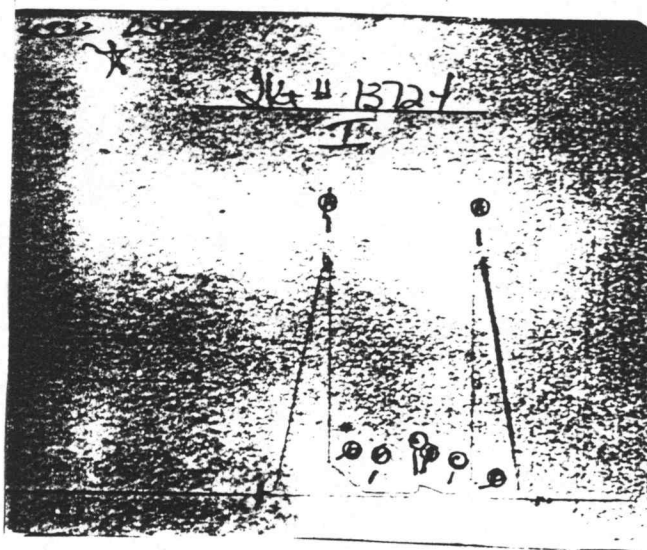
(E) 35 PSI TO (F) : 35

FINAL CLOSED IN PERIOD MIN: 42

(G) 292

FINAL HYDROSTATIC PRESSURE

(H) 1985



WESTERN TESTING CO. INC.  
WICHITA-KANSAS

Pressure Transient Report  
-----

COMPANY : McGINNESS OIL COMPANY  
RIG : PRATT-KANSAS  
FIELD : WAYNE WILLIAMS  
WELL : #1  
DATE : 7-30-88  
GAUGE NO : 4332

OPERATIONAL COMMENTS

COMPANY : MCGINNESS OIL COMPANY  
 WELL : #1  
 GAUGE # : 4332  
 DATE : 30/ 7/88

FIELD : WAYNE WILLIAMS  
 JOB # : 13724  
 DEPTH : 4120  
 TEST :

DATA No.	REAL TIME HR:MN:SS	ELAPSE TIME DELTA HOURS	PRESSURE PSIG	TEMP DEG F	DELTA P Pi-P(i-1)
1					
INITIAL FLOW					
2	4:15:0	0.000	35.000	123.00	0.000
3	4:19:59	0.083	35.000	123.00	0.000
4	4:25:0	0.167	35.000	123.00	0.000
5	4:30:0	0.250	35.000	123.00	0.000
6	4:34:59	0.333	35.000	123.00	0.000
7	4:40:0	0.417	35.000	123.00	0.000
8	4:45:0	0.500	35.000	123.00	0.000
INITIAL SHUT-IN					
9	4:48:0	0.550	37.000	123.00	2.000
10	4:51:0	0.600	47.000	123.00	10.000
11	4:54:0	0.650	57.000	123.00	10.000
12	4:57:0	0.700	65.000	123.00	8.000
13	5:0:0	0.750	76.000	123.00	11.000
14	5:3:0	0.800	86.000	123.00	10.000
15	5:6:0	0.850	93.000	123.00	7.000
16	5:9:0	0.900	100.000	123.00	7.000
17	5:12:0	0.950	104.000	123.00	4.000
18	5:15:0	1.000	106.000	123.00	2.000
FINAL FLOW					
19	5:16:0	1.017	35.000	123.00	-71.000
20	5:19:59	1.083	35.000	123.00	0.000
21	5:25:0	1.167	35.000	123.00	0.000
22	5:30:0	1.250	35.000	123.00	0.000
23	5:34:59	1.333	35.000	123.00	0.000
24	5:40:0	1.417	35.000	123.00	0.000
25	5:45:0	1.500	35.000	123.00	0.000
26	5:49:59	1.583	35.000	123.00	0.000
27	5:55:0	1.667	35.000	123.00	0.000
28	6:0:0	1.750	35.000	123.00	0.000
29	6:4:59	1.833	35.000	123.00	0.000
30	6:10:0	1.917	35.000	123.00	0.000
31	6:15:0	2.000	35.000	123.00	0.000
FINAL SHUT-IN					
32	6:18:0	2.050	45.000	123.00	10.000
33	6:21:0	2.100	58.000	123.00	13.000
34	6:24:0	2.150	75.000	123.00	17.000
35	6:27:0	2.200	95.000	123.00	20.000
36	6:30:0	2.250	115.000	123.00	20.000
37	6:33:0	2.300	136.000	123.00	21.000
38	6:36:0	2.350	155.000	123.00	19.000
39	6:39:0	2.400	175.000	123.00	20.000
40	6:42:0	2.450	194.000	123.00	19.000
41	6:45:0	2.500	215.000	123.00	21.000
42	6:48:0	2.550	233.000	123.00	18.000
43	6:51:0	2.600	251.000	123.00	18.000
44	6:54:0	2.650	270.000	123.00	19.000
45	6:57:0	2.700	292.000	123.00	22.000