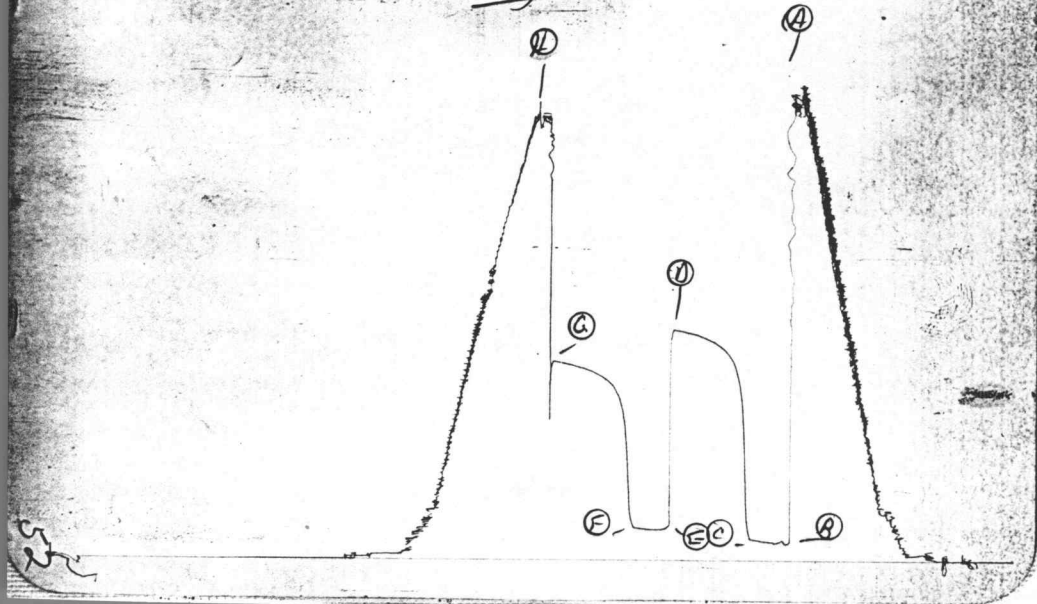


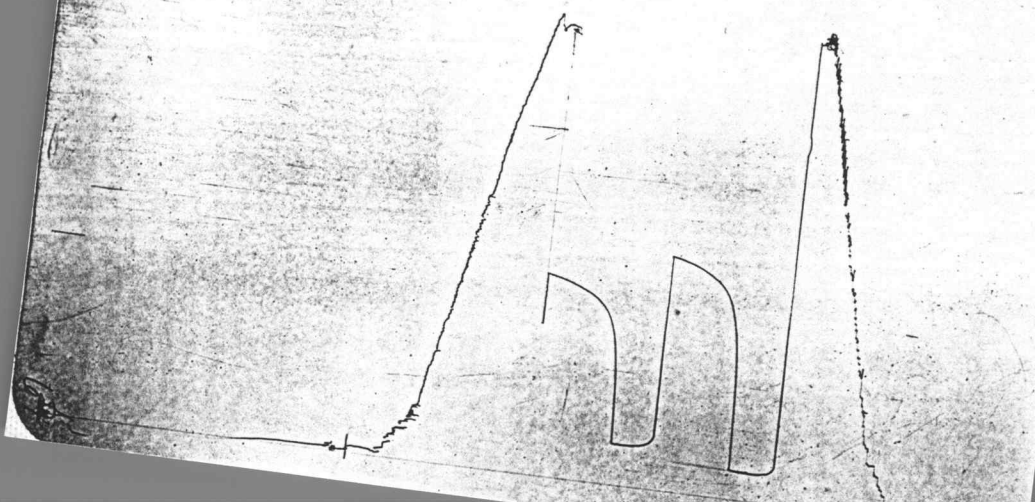
TKF 12874

I

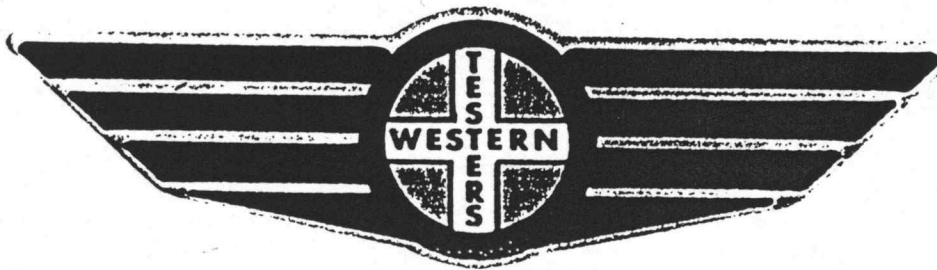


KT 12874

0



FORMATION TEST REPORT



Home Office:

Wichita, Kansas 67201

P.O. Box 1599

Phone (316) 262-5861

COMPANY BIRD ENERGY, INC. LEASE & WELL NO. TRIMPA #1 SEC. 9 TWP. 27S RGE. 21W TEST NO. 1 DATE 4/5/88

WESTERN TESTING CO. INC.
SUBSURFACE PRESSURE SURVEY

DATE : 4-5-88 TICKET : 12874
CUSTOMER : BIRD ENERGY INC. LEASE : TRIMPA
WELL : #1 TEST: 1 GEOLOGIST : BIRD
ELEVATION : - FORMATION : MISSISSIPPI
SECTION : 9 TOWNSHIP : 27S
RANGE : 21W COUNTY : FORD STATE : KANSAS
GAUGE SN# : 13552 RANGE : 4050 CLOCK : 12

INTERVAL FROM : 4874 TO : 4947 TOTAL DEPTH : 4947
DEPTH OF SELECTIVE ZONE :
PACKER DEPTH : 4869 SIZE : 6.63
PACKER DEPTH : 4874 SIZE : 6.63
PACKER DEPTH : SIZE :
PACKER DEPTH : SIZE :

DRILLING CON. : EAGLE RIG 1
MUD TYPE : CHEMICAL VISCOSITY : 45
WEIGHT : 9.2 WATER LOSS (CC) : 10.6
CHLORIDES (PPM) : 5000
JARS-MAKE : WTC SERIAL NUMBER : 420
DID WELL FLOW ? : NO REVERSED OUT ? : NO

DRILL COLLAR LENGTH : 470 FT I.D. inch : 2.25
WEIGHT PIPE LENGTH : 0 FT I.D. inch : 0.00
DRILL PIPE LENGTH : 4375 FT I.D. inch : 3.80
TEST TOOL LENGTH : 29 FT TOOL SIZE : 5.50
ANCHOR LENGTH : 73 FT ANCHOR SIZE : 5.50
SURFACE CHOKE SIZE : .75 IN BOTTOM CHOKE SIZE : .75
MAIN HOLE SIZE : 7.875 IN TOOL JOINT SIZE : 4.5 FH

BLOW COMMENT #1 : WEAK BLOW THROUGHOUT BOTH FLOW PERIODS.
BLOW COMMENT #2 :
BLOW COMMENT #3 :
BLOW COMMENT #4 :

RECOVERED : 90 FT OF: DRILLING MUD (FEW SPECKS OF OIL)
RECOVERED : 180 FT OF: MUDDY WATER

CHLORIDES: 18000 PPM

Total Barrels Fluid = 1.33
Total Fluid Prod Rate = 31.87 BFPD
Indicated Wtr Rate = 11.80 BWPD

REMARK 1 : TIGHT HOLE !!
REMARK 2 :
REMARK 3 :
REMARK 4 :

SET PACKER(S) : 5:30 PM
WELL TEMPERATURE : 123
INITIAL HYDROSTATIC PRESSURE (A) 2396
INITIAL FLOW PERIOD MIN: 30 (B) 88 PSI TO (C) : 110
INITIAL CLOSED IN PERIOD MIN: 63 (D) 1219
FINAL FLOW PERIOD MIN: 30 (E) 159 PSI TO (F) : 167
FINAL CLOSED IN PERIOD MIN: 63 (G) 1052
FINAL HYDROSTATIC PRESSURE (H) 2357
TIME STARTED OFF BOTTOM : 8:30 PM

WESTERN TESTING CO. INC.
WICHITA-KANSAS

Pressure Transient Report

COMPANY : BIRD ENERGY INC.
RIG : FORD-KANSAS
FIELD : TRIMPA
WELL : #1
DATE : 4-5-88
GAUGE NO : 13552

OPERATIONAL COMMENTS

TIGHT HOLE !!

COMPANY : BIRD ENERGY INC.

WELL : #1

GAUGE # : 13552

DATE : 5/ 4/88

FIELD : TRIMPA

JOB # : 12874

DEPTH : 4947

TEST : TIGHT HOLE !!

DATA No.	REAL TIME HR:MN:SS	ELAPSE TIME DELTA HOURS	PRESSURE PSIG	TEMP DEG F	DELTA P Pi-P(i-1)
1	5:30:0	0.000	88.000	123.00	0.000
2	5:34:59	0.083	102.000	123.00	14.000
3	5:40:0	0.167	94.000	123.00	-8.000
4	5:45:0	0.250	96.000	123.00	2.000
5	5:49:59	0.333	100.000	123.00	4.000
6	5:55:0	0.417	107.000	123.00	7.000
7	6:0:0	0.500	110.000	123.00	3.000
8	6:3:0	0.550	197.000	123.00	87.000
9	6:6:0	0.600	503.000	123.00	306.000
10	6:9:0	0.650	753.000	123.00	250.000
11	6:12:0	0.700	884.000	123.00	131.000
12	6:15:0	0.750	972.000	123.00	88.000
13	6:18:0	0.800	1034.000	123.00	62.000
14	6:21:0	0.850	1071.000	123.00	37.000
15	6:24:0	0.900	1103.000	123.00	32.000
16	6:27:0	0.950	1120.000	123.00	17.000
17	6:30:0	1.000	1136.000	123.00	16.000
18	6:33:0	1.050	1150.000	123.00	14.000
19	6:36:0	1.100	1162.000	123.00	12.000
20	6:39:0	1.150	1172.000	123.00	10.000
21	6:42:0	1.200	1179.000	123.00	7.000
22	6:45:0	1.250	1188.000	123.00	9.000
23	6:48:0	1.300	1196.000	123.00	8.000
24	6:51:0	1.350	1201.000	123.00	5.000
25	6:54:0	1.400	1206.000	123.00	5.000
26	6:57:0	1.450	1211.000	123.00	5.000
27	7:0:0	1.500	1216.000	123.00	5.000
28	7:3:0	1.550	1219.000	123.00	3.000
29	7:4:0	1.567	159.000	123.00	-1060.000
30	7:7:59	1.633	159.000	123.00	0.000
31	7:13:0	1.717	159.000	123.00	0.000
32	7:18:0	1.800	159.000	123.00	0.000
33	7:22:59	1.883	162.000	123.00	3.000
34	7:28:0	1.967	166.000	123.00	4.000
35	7:33:0	2.050	167.000	123.00	1.000
36	7:36:0	2.100	244.000	123.00	77.000
37	7:38:59	2.150	476.000	123.00	232.000
38	7:42:0	2.200	688.000	123.00	212.000
39	7:45:0	2.250	799.000	123.00	111.000
40	7:48:0	2.300	865.000	123.00	66.000
41	7:51:0	2.350	906.000	123.00	41.000
42	7:53:59	2.400	935.000	123.00	29.000
43	7:57:0	2.450	953.000	123.00	18.000
44	8:0:0	2.500	969.000	123.00	16.000
45	8:3:0	2.550	982.000	123.00	13.000
46	8:6:0	2.600	992.000	123.00	10.000
47	8:9:0	2.650	1001.000	123.00	9.000
48	8:11:59	2.700	1009.000	123.00	8.000
49	8:15:0	2.750	1017.000	123.00	8.000
50	8:18:0	2.800	1021.000	123.00	4.000
51	8:21:0	2.850	1027.000	123.00	6.000
52	8:24:0	2.900	1033.000	123.00	6.000

COMPANY : BIRD ENERGY INC.
WELL : #1
GAUGE # : 13552
DATE : 5/ 4/88

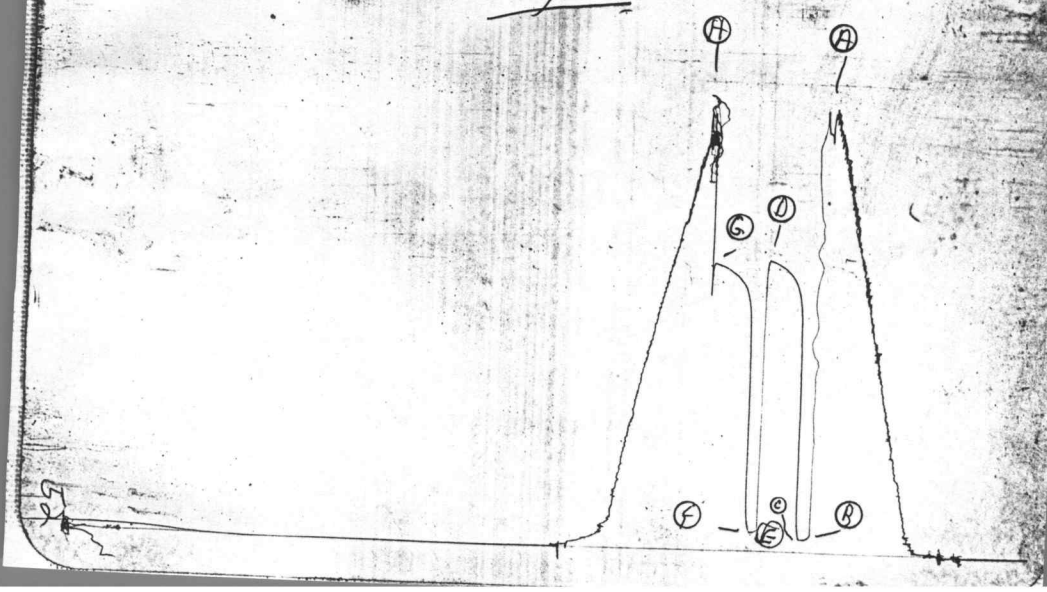
FIELD : TRIMPA
JOB # : 12874
DEPTH : 4947
TEST : TIGHT HOLE !!

DATA No.	REAL TIME HR:MN:SS	ELAPSE TIME DELTA HOURS	PRESSURE PSIG	TEMP DEG F	DELTA P Pi-P(i-1)
53	8:26:59	2.950	1037.000	123.00	4.000
54	8:30: 0	3.000	1042.000	123.00	5.000
55	8:33: 0	3.050	1046.000	123.00	4.000
56	8:36: 0	3.100	1052.000	123.00	6.000

WESTERN TESTING CO. INC.

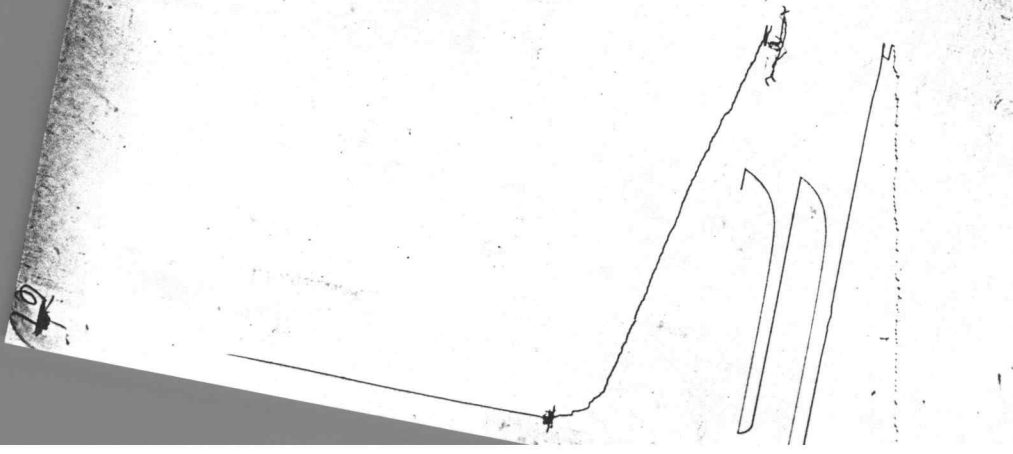
TKT 12875

4



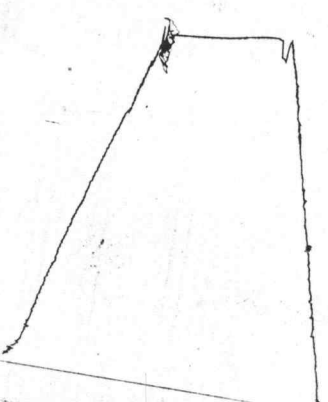
HT 12875

0

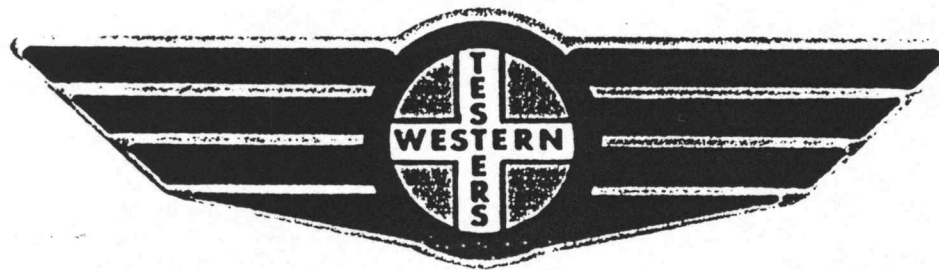


HT

TK 12875
Below Saddle



FORMATION TEST REPORT



Home Office:

Wichita, Kansas 67201

P.O. Box 1599

Phone (316) 262-5861

COMPANY

BIRD ENERGY, INC.

LEASE & WELL NO.

TRIMPA #1

SEC. 9

TWP. 27S

RGE. 21W

TEST NO. 2

DATE

4/6/88

WESTERN TESTING CO. INC.
SUBSURFACE PRESSURE SURVEY

DATE : 4-6-88 TICKET : 12875
CUSTOMER : BIRD ENERGY INC. LEASE : TRIMPA
WELL : #1 TEST: 2 GEOLOGIST : K. DIXON?
ELEVATION : - FORMATION : KANSAS CITY
SECTION : 9 TOWNSHIP : 27S
RANGE : 21W COUNTY : FORD STATE : KANSAS
GAUGE SN# : 13552 RANGE : 4050 CLOCK : 12

INTERVAL FROM : 4585 TO : 4617 TOTAL DEPTH : 5000
DEPTH OF SELECTIVE ZONE :
PACKER DEPTH : 4580 SIZE : 6.63
PACKER DEPTH : 4585 SIZE : 6.63
PACKER DEPTH : 4617 SIZE : 6.63
PACKER DEPTH : SIZE :

DRILLING CON. : EAGLE RIG 1
MUD TYPE : CHEMICAL VISCOSITY : 45
WEIGHT : 9.2 WATER LOSS (CC) : 10.6
CHLORIDES (PPM) : 5000
JARS-MAKE : WTC SERIAL NUMBER : 420
DID WELL FLOW ? : NO REVERSED OUT ? : NO

DRILL COLLAR LENGTH : 120 FT I.D. inch : 2.25
WEIGHT PIPE LENGTH : 0 FT I.D. inch : 0.00
DRILL PIPE LENGTH : 4436 FT I.D. inch : 3.80
TEST TOOL LENGTH : 29 FT TOOL SIZE : 5.50
ANCHOR LENGTH : 32 FT ANCHOR SIZE : 5.50
SURFACE CHOKE SIZE : .75 IN BOTTOM CHOKE SIZE : .75
MAIN HOLE SIZE : 7.875 IN TOOL JOINT SIZE : 4.5 FH

BLOW COMMENT #1 : WEAK BLOW THROUGHOUT BOTH FLOW PERIODS.
BLOW COMMENT #2 :
BLOW COMMENT #3 :
BLOW COMMENT #4 :

RECOVERED : 120 FT OF: DRILLING MUD

Total Barrels Fluid = 0.59
Total Fluid Prod Rate = 56.65 BFPD
Indicated Wtr Rate = 5.66 BWPD

REMARK 1 : TIGHT HOLE !
REMARK 2 : 383 FEET OF TAIL PIPE.
REMARK 3 :
REMARK 4 :

SET PACKER(S) : 6:10 PM

TIME STARTED OFF BOTTOM : 7:30 PM

WELL TEMPERATURE : 120

INITIAL HYDROSTATIC PRESSURE

(A) 2285

INITIAL FLOW PERIOD MIN: 10

(B) 82 PSI TO (C) : 65

INITIAL CLOSED IN PERIOD MIN: 33

(D) 1541

FINAL FLOW PERIOD MIN: 5

(E) 106 PSI TO (F) : 96

FINAL CLOSED IN PERIOD MIN: 36

(G) 1521

FINAL HYDROSTATIC PRESSURE

(H) 2213

WESTERN TESTING CO. INC.
WICHITA-KANSAS

Pressure Transient Report

COMPANY : BIRD ENERGY INC.
RIG : FORD-KANSAS
FIELD : TRIMPA
WELL : #1
DATE : 4-6-88
GAUGE NO : 13552

OPERATIONAL COMMENTS

TIGHT HOLE !
383 FEET OF TAIL PIPE.

COMPANY : BIRD ENERGY INC.
WELL : #1
GAUGE # : 13552
DATE : 6/ 4/88

FIELD : TRIMPA
JOB # : 12875
DEPTH : 5000
TEST : TIGHT HOLE !

DATA No.	REAL TIME HR:MN:SS	ELAPSE TIME DELTA HOURS	PRESSURE PSIG	TEMP DEG F	DELTA P Pi-P(i-1)
1	6:10:0	0.000	82.000	120.00	0.000
2	6:14:59	0.083	66.000	120.00	-16.000
3	6:20:0	0.167	65.000	120.00	-1.000
4	6:23:0	0.217	307.000	120.00	242.000
5	6:26:0	0.267	1006.000	120.00	699.000
6	6:29:0	0.317	1316.000	120.00	310.000
7	6:32:0	0.367	1409.000	120.00	93.000
8	6:35:0	0.417	1450.000	120.00	41.000
9	6:38:0	0.467	1477.000	120.00	27.000
10	6:41:0	0.517	1502.000	120.00	25.000
11	6:44:0	0.567	1515.000	120.00	13.000
12	6:47:0	0.617	1527.000	120.00	12.000
13	6:50:0	0.667	1536.000	120.00	9.000
14	6:53:0	0.717	1541.000	120.00	5.000
15	6:54:0	0.733	106.000	120.00	-1435.000
16	6:58:0	0.800	96.000	120.00	-10.000
17	7:1:0	0.850	206.000	120.00	110.000
18	7:4:0	0.900	933.000	120.00	727.000
19	7:7:0	0.950	1293.000	120.00	360.000
20	7:10:0	1.000	1385.000	120.00	92.000
21	7:13:0	1.050	1424.000	120.00	39.000
22	7:16:0	1.100	1449.000	120.00	25.000
23	7:19:0	1.150	1468.000	120.00	19.000
24	7:22:0	1.200	1482.000	120.00	14.000
25	7:25:0	1.250	1497.000	120.00	15.000
26	7:28:0	1.300	1507.000	120.00	10.000
27	7:31:0	1.350	1513.000	120.00	6.000
28	7:34:0	1.400	1521.000	120.00	8.000

WESTERN TESTING CO. INC.