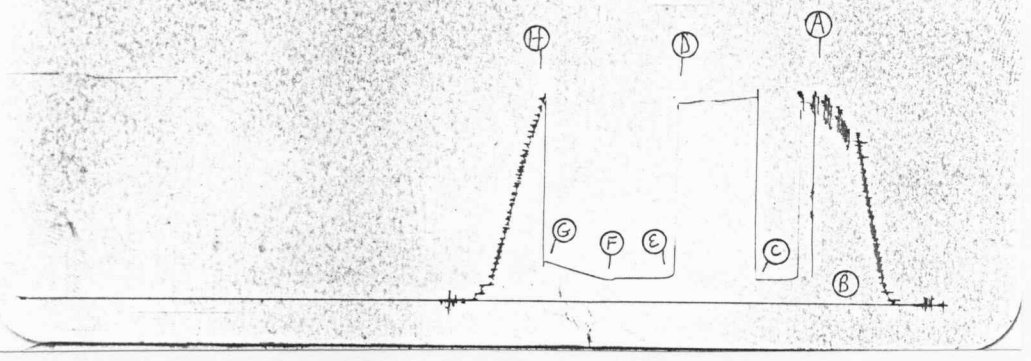


13402
DST #1

TKT # 4867

I

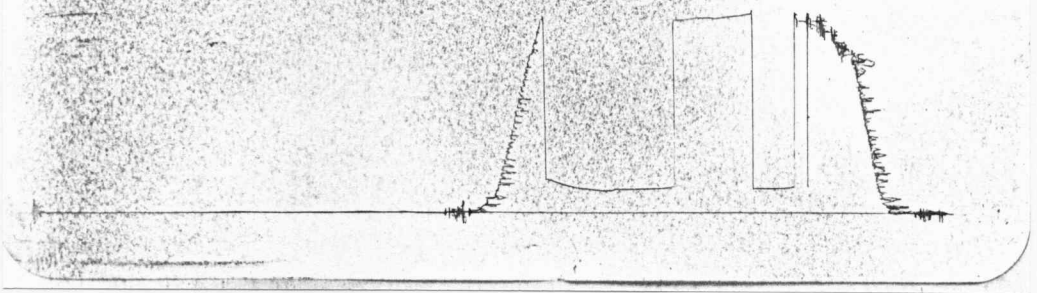


Inside Recorder

1559
DST #1

TKT # 4867

O

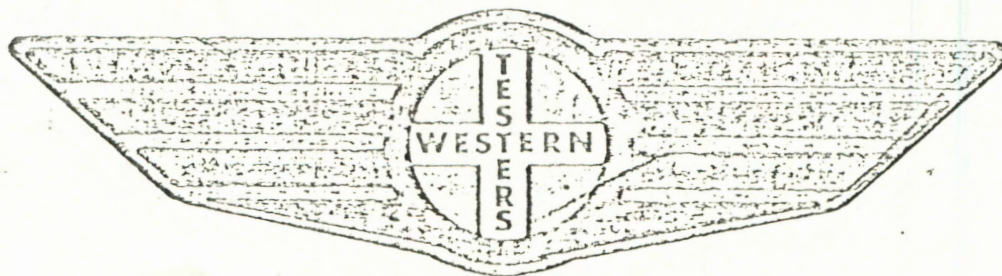


Outside Recorder

FORMATION

TEST

REPORT



Home Office:

Wichita, Kansas 67201

P.O. Box 1599

Phone (316) 262-5861

WESTERN TESTING CO. INC.
SUBSURFACE PRESSURE SURVEY

DATE: 5/26/84
CUSTOMER: J.A. ALLISON
WELL: 1
ELEVATION (KB): 1863
SECTION: 17
RANGE: 12W
GAUGE SN #13402

TEST: 1
FORMATION:
TOWNSHIP: 28S
COUNTY: PRATT
RANGE: 4025

TICKET #4867
LEASE: BAILEY
GEOLOGIST: ?
STATE: KANSAS
CLOCK: 12

INTERVAL TEST FROM: 1958 FT TO: 1990 FT TOTAL DEPTH: 1990 FT
DEPTH OF SELECTIVE ZONE: FT
PACKER DEPTH: 1953 FT SIZE: 6 3/4 IN PACKER DEPTH: 1958 FT SIZE: 6 3/4 IN
PACKER DEPTH: FT SIZE: IN PACKER DEPTH: FT SIZE: IN

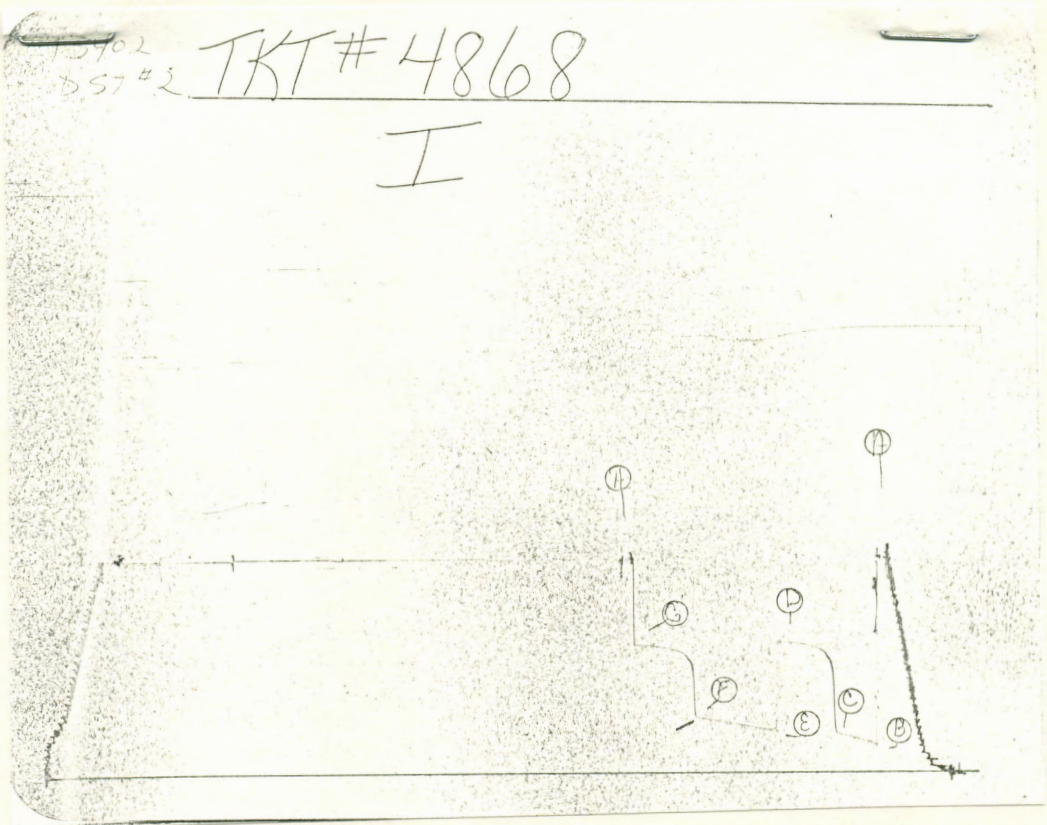
DRILLING CONTRACTOR: UNION DRLG
MUD TYPE: STARCH VISCOSITY: 40
WEIGHT: 9.7 WATER LOSS (CC): 19.2
CHLORIDES (P.P.M.): 76000
JARS - MAKE: SERIAL NUMBER:
DID WELL FLOW? NO REVERSED OUT? NO
DRILL COLLAR LENGTH: 150 FT I.D.: 2.2 IN
WEIGHT PIPE LENGTH: FT I.D.: IN
DRILL PIPE LENGTH: 1788 FT I.D.: 3.8 IN
TEST TOOL LENGTH: 20 FT TOOL SIZE: 5 1/2 OD IN
ANCHOR LENGTH: 32 FT SIZE: 5 1/2 OD IN
SURFACE CHOKE SIZE: 3/4 IN BOTTOM CHOKE SIZE: 3/4 IN
MAIN HOLE SIZE: 7 7/8 IN TOOL JOINT SIZE: 4 1/2 XH IN

BLOW: INITIAL FLOW PERIOD WEAK BLOW
DECREASING TO VERY WEAK BLOW.
FINAL FLOW PERIOD NO BLOW.

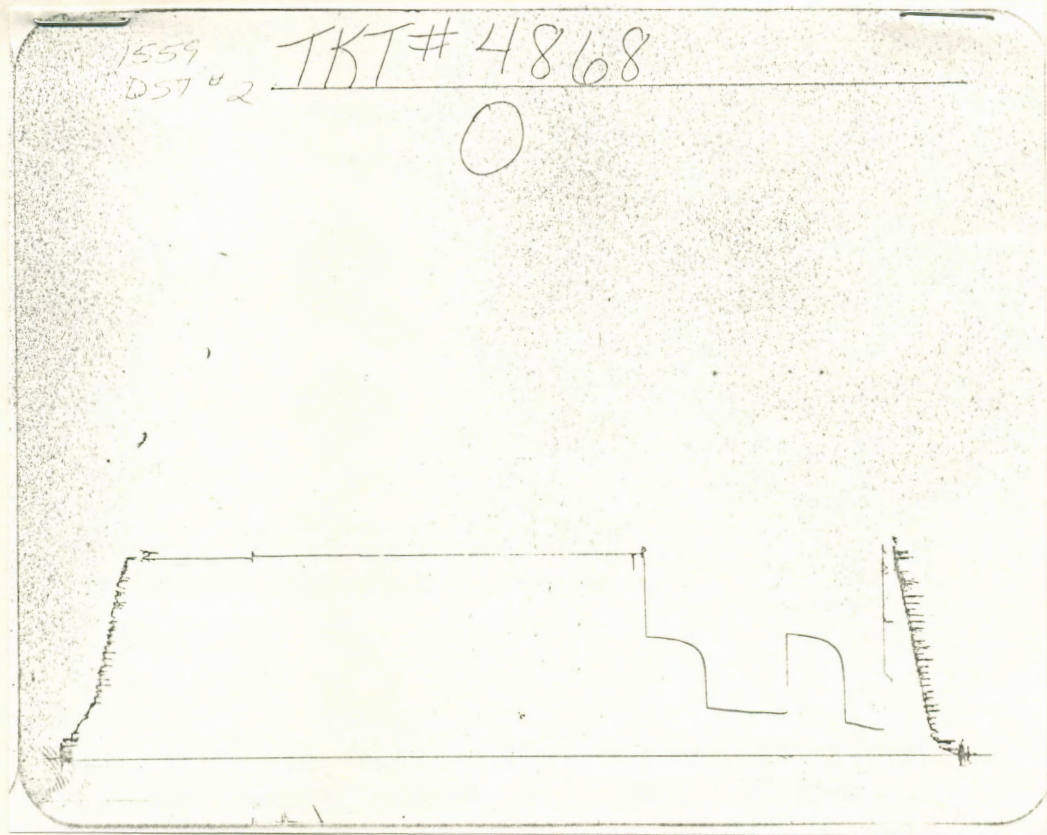
RECOVERED: 150 FT OF: MUD.
RECOVERED: FT OF:
RECOVERED: FT OF:
RECOVERED: FT OF:
RECOVERED: FT OF:
RECOVERED: FT OF:
RECOVERED: FT OF:
RECOVERED: FT OF:
RECOVERED: FT OF:
RECOVERED: FT OF:

REMARKS: OPENED TOOL & SLID 7'; PULLED LOOSE
& PICKED UP A JOINT OF PIPE.
RESET TOOL. PICKED UP TOOL TOO
HIGH ON INITIAL SHUT-IN.

TIME SET PACKER(S): 1:10 AM TIME STARTED OFF BOTTOM: 4:10 AM
WELL TEMPERATURE: 94 °F
INITIAL HYDROSTATIC PRESSURE: (A) 1027 PSI
INITIAL FLOW PERIOD MIN: 30 (B) 120 PSI TO (C) 120 PSI
INITIAL CLOSED IN PERIOD MIN: 60 (D) 1015 PSI
FINAL FLOW PERIOD MIN: 45 (E) 120 PSI TO (F) 120 PSI
FINAL CLOSED IN PERIOD MIN: 51 (G) 202 PSI
FINAL HYDROSTATIC PRESSURE (H) 1027 PSI



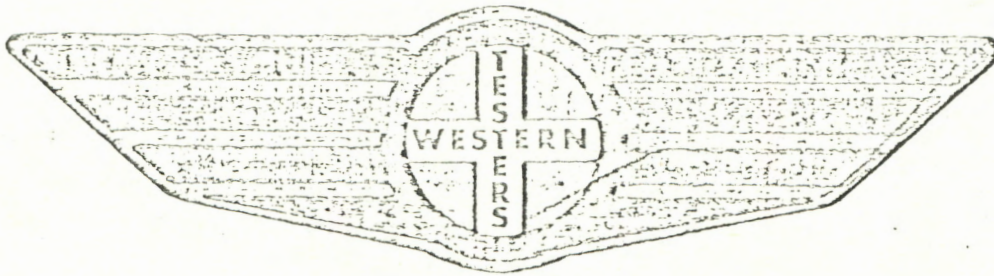
Inside Recorder



FORMATION

TEST

REPORT



Home Office:

Wichita, Kansas 67201

P.O. Box 1599

Phone (316) 262-5861

Company J.A. ALLISON Lease and Well No. #1 RATTY Sec. 17 Twp. 28S Rge. 12W Test No. 2 Date 5/27/81

WESTERN TESTING CO. INC.
SUBSURFACE PRESSURE SURVEY

DATE: 5/27/84 TICKET #4868
CUSTOMER: J.A. ALLISON LEASE: BAILEY
WELL: 1 TEST: 2 GEOLOGIST: ?
ELEVATION (KB): 1858 FORMATION: WINFIELD
SECTION: 17 TOWNSHIP: 28S
RANGE: 12W COUNTY: PRATT STATE: KANSAS
GAUGE SN #13402 RANGE: 4025 CLOCK: 12

INTERVAL TEST FROM: 1983 FT TO: 2040 FT TOTAL DEPTH: 2040 FT
DEPTH OF SELECTIVE ZONE: FT
PACKER DEPTH: 1978 FT SIZE: 6 3/4 IN PACKER DEPTH: 1983 FT SIZE: 6 3/4 IN
PACKER DEPTH: FT SIZE: IN PACKER DEPTH: FT SIZE: IN

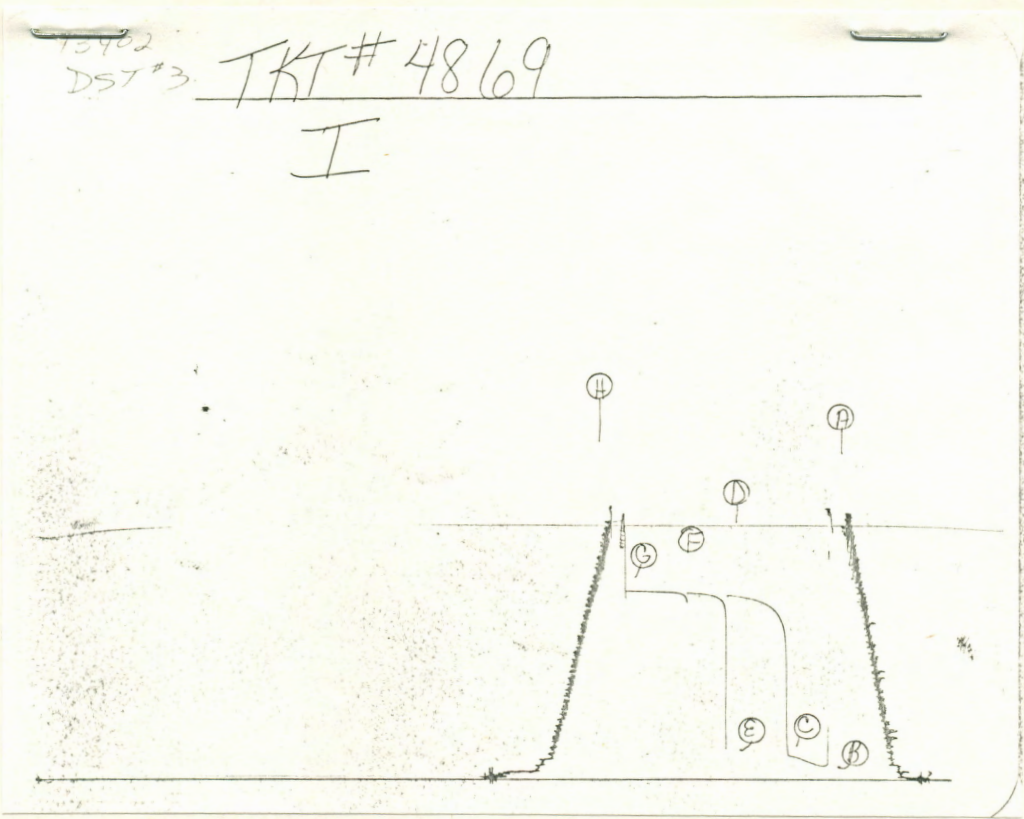
DRILLING CONTRACTOR: UNION DRLG
MUD TYPE: STARCH VISCOSITY: 36
WEIGHT: 10.1 WATER LOSS (CC): 24.8
CHLORIDES (P.P.M.): 95000
JARS - MAKE: SERIAL NUMBER:
DID WELL FLOW? NO REVERSED OUT? NO
DRILL COLLAR LENGTH: 150 FT I.D.: 2.2 IN
WEIGHT PIPE LENGTH: FT I.D.: IN
DRILL PIPE LENGTH: 1813 FT I.D.: 3.8 IN
TEST TOOL LENGTH: 20 FT TOOL SIZE: 5 1/2 OD IN
ANCHOR LENGTH: 57 FT SIZE: 5 1/2 OD IN
SURFACE CHOKE SIZE: 3/4 IN BOTTOM CHOKE SIZE: 3/4 IN
MAIN HOLE SIZE: 7 7/8 IN TOOL JOINT SIZE: 4 1/2 XH IN

BLOW: STRONG BLOW THROUGHOUT TEST.

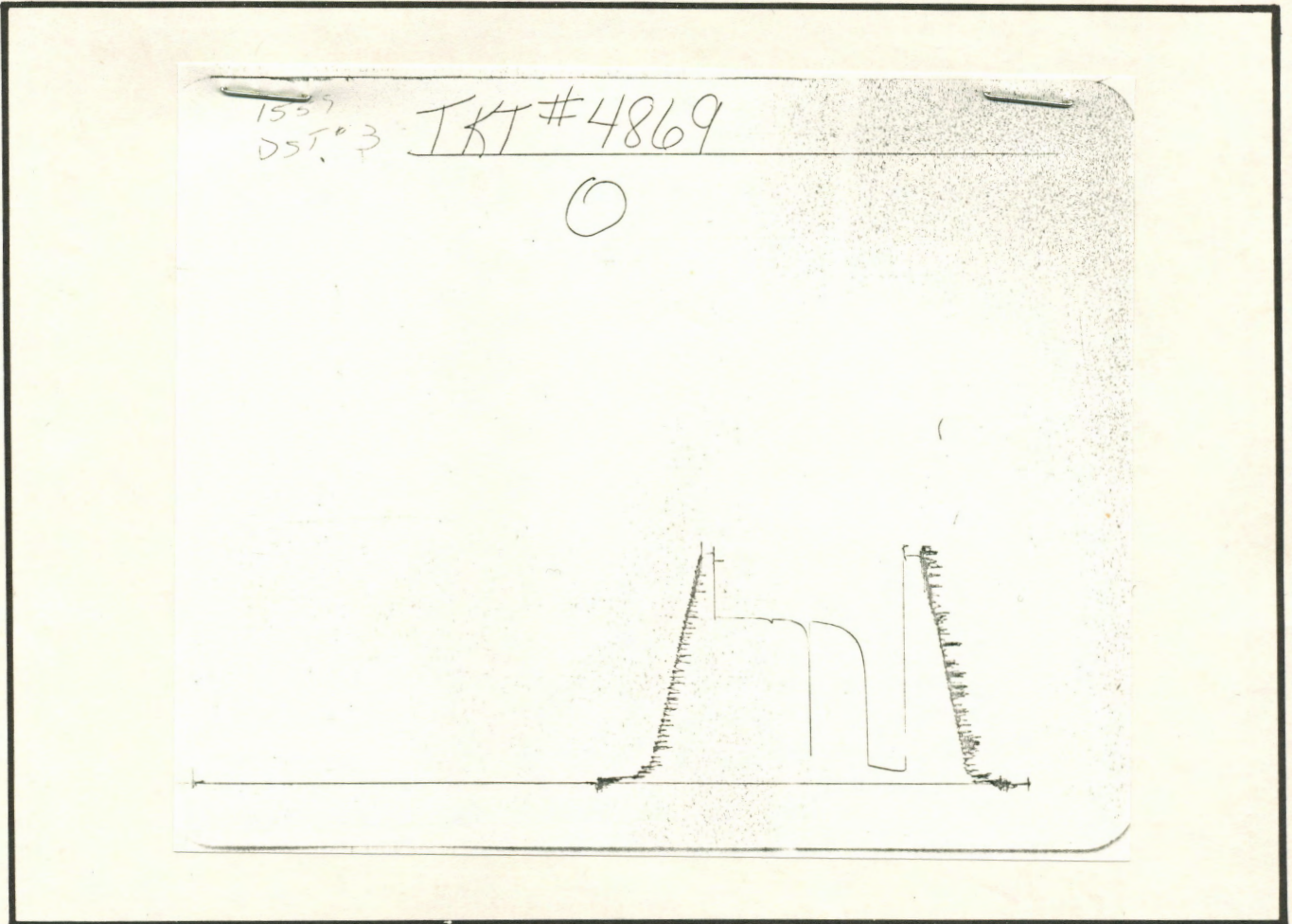
RECOVERED: 480 FT OF: WATER. CHLORIDES 106000 PPM.
RECOVERED: FT OF:
RECOVERED: FT OF:
RECOVERED: FT OF:
RECOVERED: FT OF:
RECOVERED: FT OF:
RECOVERED: FT OF:
RECOVERED: FT OF:
RECOVERED: FT OF:
RECOVERED: FT OF:

REMARKS: RIG BROKE DOWN WHEN STARTING OUT WITH TEST.

TIME SET PACKER(S): 12:35 PM TIME STARTED OFF BOTTOM: 3:35 PM
WELL TEMPERATURE: 94 °F
INITIAL HYDROSTATIC PRESSURE: (A) 1097 PSI
INITIAL FLOW PERIOD MIN: 30 (B) 139 PSI TO (C) 195 PSI
INITIAL CLOSED IN PERIOD MIN: 45 (D) 660 PSI
FINAL FLOW PERIOD MIN: 60 (E) 213 PSI TO (F) 276 PSI
FINAL CLOSED IN PERIOD MIN: 45 (G) 646 PSI
FINAL HYDROSTATIC PRESSURE (H) 1085 PSI



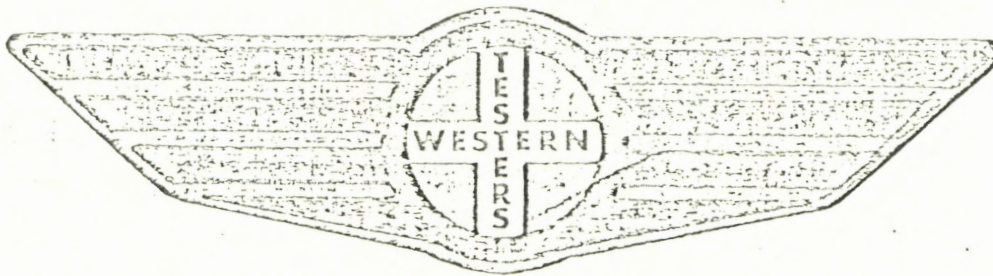
Inside Recorder



FORMATION

TEST

REPORT



Home Office:

Wichita, Kansas 67201

P.O. Box 1599

Phone (316) 262-5861

Company J.A. ALLISON Lease and Well No. #1 BAILEY Sec. 17 Twp. 28S Rge. 12W Test No. 3 Date 5/29/84

WESTERN TESTING COMPANY INC.
SUBSURFACE PRESSURE SURVEY

DATE: 5/29/84 TICKET #4869
 CUSTOMER: J.A. ALLISON LEASE: BAILEY
 WELL: 1 TEST: 3 GEOLOGIST: ?
 ELEVATION (KB): 1858 FORMATION: RED EAGLE
 SECTION: 17 TOWNSHIP: 28S
 RANGE: 12W COUNTY: PRATT STATE: KANSAS
 GAUGE SN #13402 RANGE: 4025 CLOCK: 12

INTERVAL TEST FROM: 2600 FT TO: 2655 FT TOTAL DEPTH: 2655 FT
 DEPTH OF SELECTIVE ZONE: FT
 PACKER DEPTH: 2595 FT SIZE: 6 3/4 IN PACKER DEPTH: 2600 FT SIZE: 6 3/4 IN
 PACKER DEPTH: FT SIZE: IN PACKER DEPTH: FT SIZE: IN

DRILLING CONTRACTOR: UNION
 MUD TYPE: STARCH VISCOSITY: 41
 WEIGHT: 9.1 WATER LOSS (CC): 12.4
 CHLORIDES (P.P.M.): 89000
 JARS - MAKE: SERIAL NUMBER:
 DID WELL FLOW? NO REVERSED OUT? NO
 DRILL COLLAR LENGTH: 150 FT I.D.: 2.25 IN
 WEIGHT PIPE LENGTH: FT I.D.: IN
 DRILL PIPE LENGTH: 2430 FT I.D.: 3.8 IN
 TEST TOOL LENGTH: 20 FT TOOL SIZE: 5 1/2 O.D. IN
 ANCHOR LENGTH: 55 FT SIZE: 5 1/2 O.D. IN
 SURFACE CHOKE SIZE: 3/4 IN BOTTOM CHOKE SIZE: 3/4 IN
 MAIN HOLE SIZE: 7 7/8 IN TOOL JOINT SIZE: 4 1/2 X.H. IN

BLOW: INITIAL FLOW PERIOD; WEAK BUILDING TO FAIR.
 FINAL FLOW PERIOD; DIED IN 15 MINUTES.

RECOVERED: 150 FT OF: MUDDY WATER
 RECOVERED: FT OF: CHLORIDES 62000 PPM
 RECOVERED: FT OF:
 RECOVERED: FT OF:
 RECOVERED: FT OF:
 RECOVERED: FT OF:
 RECOVERED: FT OF:
 RECOVERED: FT OF:
 RECOVERED: FT OF:
 RECOVERED: FT OF:

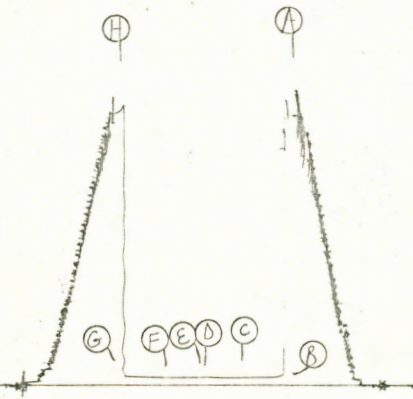
REMARKS: TURNED TOOL TOO MANY TIMES ON INITIAL SHUT-IN.

TIME SET PACKER(S): 12:30 P.M. TIME STARTED OFF BOTTOM: 3:00 P.M.
 WELL TEMPERATURE: 100 °F
 INITIAL HYDROSTATIC PRESSURE: (A) 1331 PSI
 INITIAL FLOW PERIOD MIN: 30 (B) 69 PSI TO (C) 122 PSI
 INITIAL CLOSED IN PERIOD MIN: 45 (D) 932 PSI
 FINAL FLOW PERIOD MIN: 30 (E) 153 PSI TO (F) 899 PSI
 FINAL CLOSED IN PERIOD MIN: 45 (G) 953 PSI
 FINAL HYDROSTATIC PRESSURE (H) 1313 PSI

13402
DST #4

TKT # 4870

I

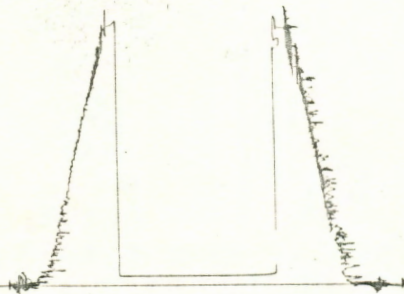


Inside Recorder

13402
DST #4

TKT # 4870

O

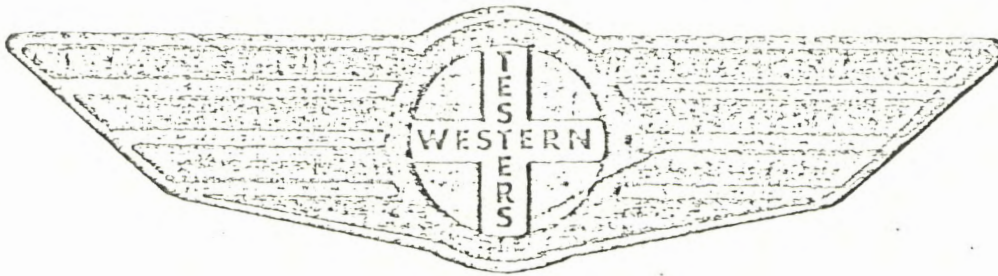


Outside Recorder

FORMATION

TEST

REPORT



Home Office:

Wichita, Kansas 67201

P.O. Box 1599

Phone (316) 262-5861

WESTERN TESTING COMPANY INC.
SUBSURFACE PRESSURE SURVEY

DATE: 5/30/84 TICKET #4870
CUSTOMER: J.A. ALLISON LEASE: BAILEY
WELL: 1 TEST: 4 GEOLOGIST: CHENEY
ELEVATION (KB): 1863 FORMATION:
SECTION: 17 TOWNSHIP: 28S
RANGE: 12W COUNTY: PRATT STATE: KANSAS
GAUGE SN #13402 RANGE: 4025 CLOCK: 12

INTERVAL TEST FROM: 2787 FT TO: 2815 FT TOTAL DEPTH: 2815 FT
DEPTH OF SELECTIVE ZONE: FT
PACKER DEPTH: 2782 FT SIZE: 6 3/4 IN PACKER DEPTH: 2787 FT SIZE: 6 3/4 IN
PACKER DEPTH: FT SIZE: IN PACKER DEPTH: FT SIZE: IN

DRILLING CONTRACTOR: UNION
MUD TYPE: CHEMICAL VISCOSITY: 40
WEIGHT: 9.3 WATER LOSS (CC):
CHLORIDES (P.P.M.): 42000
JARS - MAKE: SERIAL NUMBER:
DID WELL FLOW? NO REVERSED OUT? NO
DRILL COLLAR LENGTH: 150 FT I.D.: 2.25 IN
WEIGHT PIPE LENGTH: FT I.D.: IN
DRILL PIPE LENGTH: 2617 FT I.D.: 3.8 IN
TEST TOOL LENGTH: 20 FT TOOL SIZE: 5 1/2 O.D. IN
ANCHOR LENGTH: 28 FT SIZE: 5 1/2 O.D. IN
SURFACE CHOKE SIZE: 3/4 IN BOTTOM CHOKE SIZE: 3/4 IN
MAIN HOLE SIZE: 7 7/8 IN TOOL JOINT SIZE: 4 1/2 X.H. IN

BLOW: INITIAL FLOW PERIOD; WEAK DECREASING TO
VERY WEAK; FINAL FLOW PERIOD; NO BLOW.

RECOVERED: 10 FT OF: MUD
RECOVERED: FT OF:
RECOVERED: FT OF:
RECOVERED: FT OF:
RECOVERED: FT OF:
RECOVERED: FT OF:
RECOVERED: FT OF:
RECOVERED: FT OF:
RECOVERED: FT OF:
RECOVERED: FT OF:

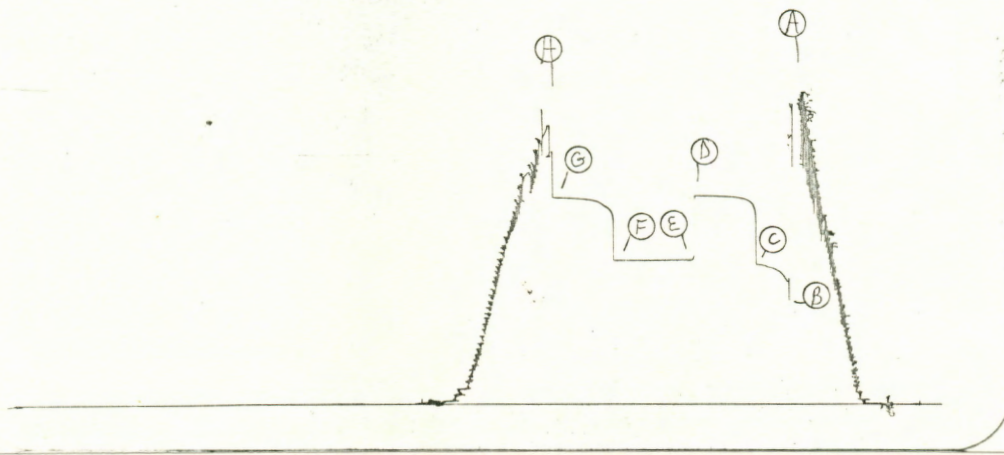
REMARKS:

TIME SET PACKER(S): 6:05 A.M. TIME STARTED OFF BOTTOM: 8:05 A.M.
WELL TEMPERATURE: 100 °F
INITIAL HYDROSTATIC PRESSURE: (A) 1370 PSI
INITIAL FLOW PERIOD MIN: 30 (B) 40 PSI TO (C) 40 PSI
INITIAL CLOSED IN PERIOD MIN: 27 (D) 44 PSI
FINAL FLOW PERIOD MIN: 30 (E) 41 PSI TO (F) 41 PSI
FINAL CLOSED IN PERIOD MIN: 30 (G) 46 PSI
FINAL HYDROSTATIC PRESSURE (H) 1370 PSI

~~13402~~
DST #5

TKT # 4871

I

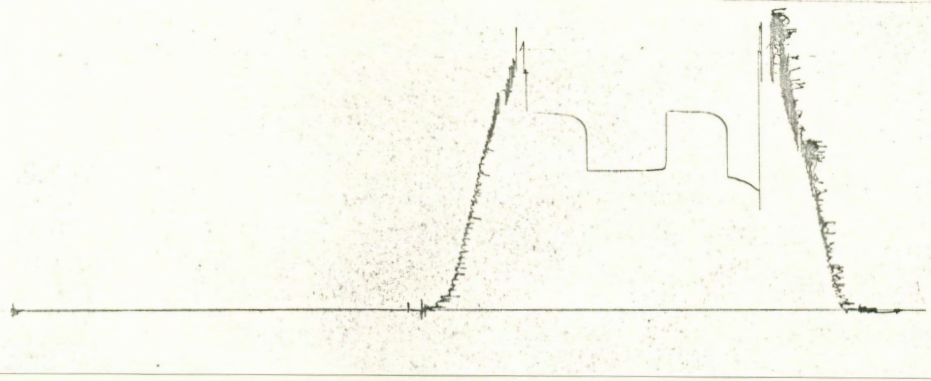


Inside Recorder

1559
DST #5

TKT # 4871

O

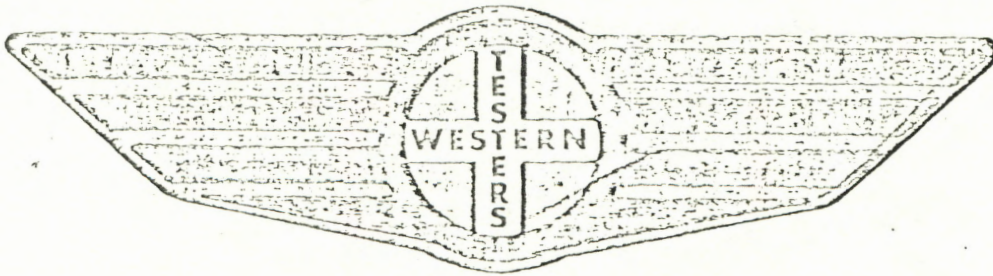


Outside Recorder

FORMATION

TEST

REPORT



Home Office:

Wichita, Kansas 67201

P.O. Box 1599

Phone (316) 262-5861

WESTERN TESTING COMPANY INC.
SUBSURFACE PRESSURE SURVEY

DATE: 5/30/84
CUSTOMER: J.A. ALLISON
WELL: 1
ELEVATION (KB): 1863
SECTION: 17
RANGE: 12W
GAUGE SN #13402

TEST: 5
FORMATION:
TOWNSHIP: 28S
COUNTY: PRATT
RANGE: 4025

TICKET #4871
LEASE: BAILEY
GEOLOGIST: CHENEY
STOTTLER
STATE: KANSAS
CLOCK: 12

INTERVAL TEST FROM: 2900 FT TO: 2915 FT TOTAL DEPTH: 2915 FT
DEPTH OF SELECTIVE ZONE: FT
PACKER DEPTH: 2895 FT SIZE: 6 3/4 IN PACKER DEPTH: 2900 FT SIZE: 6 3/4 IN
PACKER DEPTH: FT SIZE: IN PACKER DEPTH: FT SIZE: IN

DRILLING CONTRACTOR: UNION
MUD TYPE: CHEMICAL VISCOSITY: 40
WEIGHT: 9.1 WATER LOSS (CC):
CHLORIDES (P.P.M.): 42000
JARS - MAKE: SERIAL NUMBER:
DID WELL FLOW? NO REVERSED OUT? NO
DRILL COLLAR LENGTH: 150 FT I.D.: 2.25 IN
WEIGHT PIPE LENGTH: FT I.D.: IN
DRILL PIPE LENGTH: 2730 FT I.D.: 3.8 IN
TEST TOOL LENGTH: 20 FT TOOL SIZE: 5 1/2 O.D. IN
ANCHOR LENGTH: 15 FT SIZE: 5 1/2 O.D. IN
SURFACE CHOKE SIZE: 3/4 IN BOTTOM CHOKE SIZE: 3/4 IN
MAIN HOLE SIZE: 7 7/8 IN TOOL JOINT SIZE: 4 1/2 X.H. IN

BLOW: STRONG; GAS TO SURFACE IN 1 MINUTE.

RECOVERED: FT OF:
RECOVERED: FT OF:
RECOVERED: FT OF:
RECOVERED: FT OF:
RECOVERED: FT OF:
RECOVERED: FT OF:
RECOVERED: FT OF:
RECOVERED: FT OF:
RECOVERED: FT OF:
RECOVERED: FT OF:

REMARKS: GAS BLEW ALL MUD OUT OF PIPE.

TIME SET PACKER(S): 6:50 P.M. TIME STARTED OFF BOTTOM: 9:45 P.M.
WELL TEMPERATURE: 102 °F
INITIAL HYDROSTATIC PRESSURE: (A) 1380 PSI
INITIAL FLOW PERIOD MIN: 25 (B) 623 PSI TO (C) 712 PSI
INITIAL CLOSED IN PERIOD MIN: 45 (D) 1066 PSI
FINAL FLOW PERIOD MIN: 60 (E) 733 PSI TO (F) 733 PSI
FINAL CLOSED IN PERIOD MIN: 45 (G) 1056 PSI
FINAL HYDROSTATIC PRESSURE (H) 1376 PSI

GAS FLOW REPORT

Date 5/30/84 Ticket #4871 Company J.A. Allison
 Well Name and No. #1 Bailey Dst No. 5 Interval Tested 2900 - 2915
 County Pratt State Kansas Sec. 17 Twp. 28s Rg. 12w

| Time Gauge in Min. | P.S.I. on Merla Orifice Well Tester | Size of Orifice | P.S.I. on Pitot Tester | P.S.I. on Side Static Tester | Description of Flow |
|------------------------------|-------------------------------------|-----------------|------------------------|------------------------------|---------------------|
| PRE FLOW | | | | | |
| 5 | 70 | 1½ | | | 4946000 CFPD |
| 10 | 80 | " | | | 5543000 " |
| 15 | 85 | " | | | 5842000 " |
| 20 | 100 | " | | | 6737000 " |
| 25 | 100 | " | | | 6737000 " |
| *Blew mist after 15 minutes. | | | | | |

| | | | | | |
|---|-----|----|--|--|--------------|
| SECOND FLOW | | | | | |
| 10 | 100 | 1½ | | | 6737000 CFPD |
| 20 | 100 | " | | | 6737000 " |
| 30 | 100 | " | | | 6737000 " |
| 40 | 100 | " | | | 6737000 " |
| 50 | 100 | " | | | 6737000 " |
| 60 | 100 | " | | | 6737000 " |
| *Stopped blowing mist after 40 minutes. | | | | | |

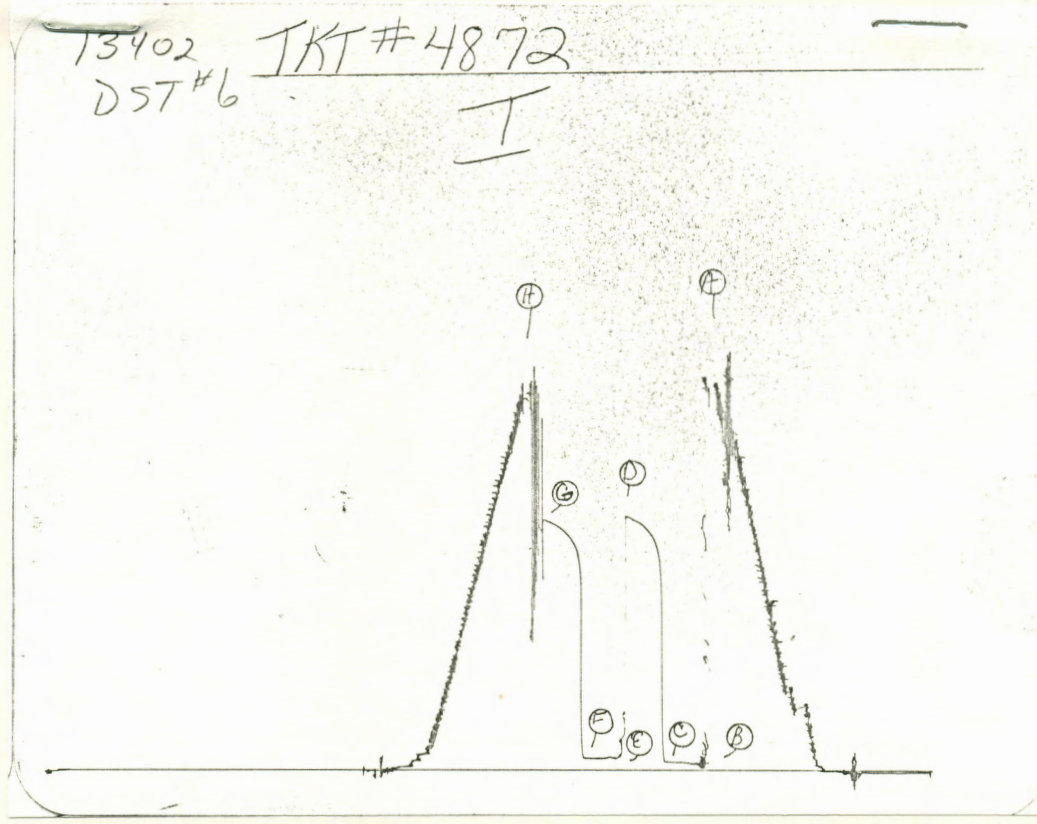
GAS BOTTLE

Serial No. WTC 640 Date Bottle Filled 5/30/84 Date to be Invoiced 5/30/84

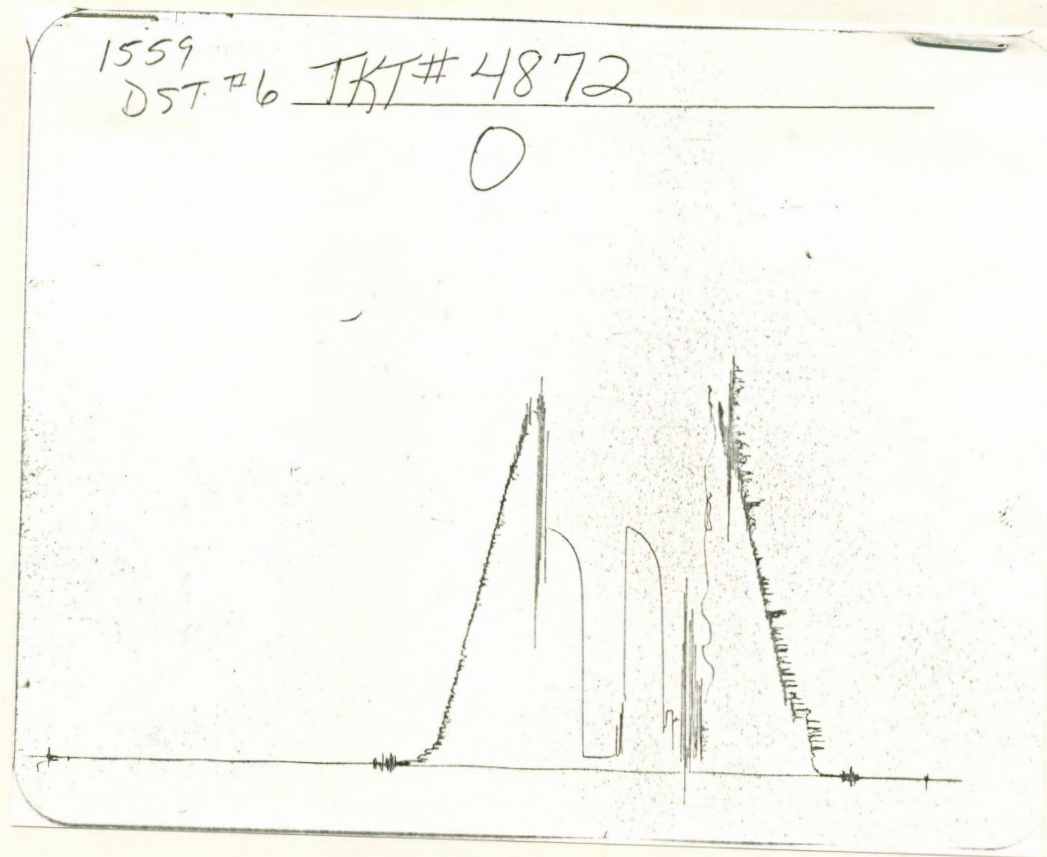
Requisition and Provisions for high pressure stainless steel gas bottles. Western Testing Co., Inc. shall not be liable for damage of any kind to property or personnel of the one whom gas bottle is filled or for any loss suffered or sustained directly or indirectly through the use of these bottles. By signing of this ticket showing receipt of a gas testing bottle, the undersigned agrees for himself and as agent for operator, to return this bottle to Western Testing Co., Inc. within thirty (30) days free of charge, or be invoiced in the amount of \$75.00 (total charge). Should valve or seal piug be missing or damaged beyond repair, operator shall be invoiced for repairs at our invoiced price.

All charges subject to 1½% per month, equal to 18% interest per annum after 30 days from date of invoice. Any expense incurred for collection will be added to the original amount.

COMPANY'S NAME J.A. Allison
 Authorized by Greg Cheney



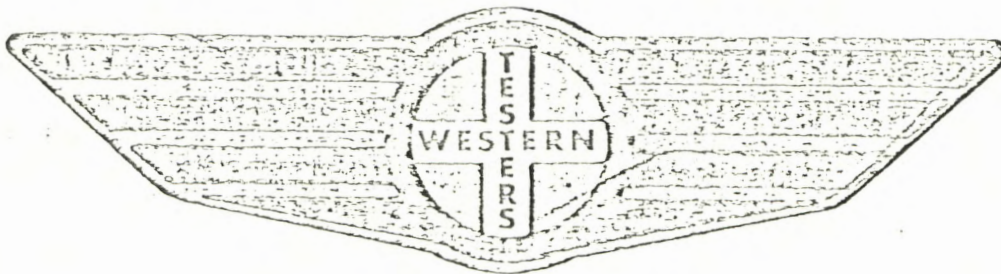
Inside Recorder



FORMATION

TEST

REPORT



Home Office:

Wichita, Kansas 67201

P.O. Box 1599

Phone (316) 262-5861

WESTERN TESTING COMPANY INC.
SUBSURFACE PRESSURE SURVEY

DATE: 6/1/84
CUSTOMER: J.A. ALLISON
WELL: #1
ELEVATION (KB): 1863
SECTION: 17
RANGE: 12W
GAUGE SN #13402

TEST: 6
FORMATION: LANSING
TOWNSHIP: 28S
COUNTY: PRATT
RANGE: 4025

TICKET #4872
LEASE: BAILEY
GEOLOGIST: CHEENEY
STATE: KANSAS
CLOCK: 12

INTERVAL TEST FROM: 3883 FT TO: 3915 FT TOTAL DEPTH: 3915 FT
DEPTH OF SELECTIVE ZONE: FT
PACKER DEPTH: 3878 FT SIZE: 6 3/4 IN PACKER DEPTH: 3883 FT SIZE: 6 3/4 IN
PACKER DEPTH: FT SIZE: IN PACKER DEPTH: FT SIZE: IN

DRILLING CONTRACTOR: UNION
MUD TYPE: CHEM VISCOSITY: 65
WEIGHT: 9.1 WATER LOSS (CC): 9.6
CHLORIDES (P.P.M.): 12000
JARS - MAKE: SERIAL NUMBER:
DID WELL FLOW? NO REVERSED OUT? NO
DRILL COLLAR LENGTH: 150 FT I.D.: 2.25 IN
WEIGHT PIPE LENGTH: FT I.D.: IN
DRILL PIPE LENGTH: 3713 FT I.D.: 3.8 IN
TEST TOOL LENGTH: 20 FT TOOL SIZE: 5 1/2 O.D. IN
ANCHOR LENGTH: 32 FT SIZE: 5 1/2 O.D. IN
SURFACE CHOKE SIZE: 3/4 IN BOTTOM CHOKE SIZE: 3/4 IN
MAIN HOLE SIZE: 7 7/8 IN TOOL JOINT SIZE: 4 1/2 XH IN

BLOW: INITIAL FLOW PERIOD WEAK DECREASING
TO VERY WEAK. FINAL FLOW PERIOD
NO BLOW.

RECOVERED: 65 FT OF: MUD.
RECOVERED: FT OF:
RECOVERED: FT OF:
RECOVERED: FT OF:
RECOVERED: FT OF:
RECOVERED: FT OF:
RECOVERED: FT OF:
RECOVERED: FT OF:
RECOVERED: FT OF:
RECOVERED: FT OF:

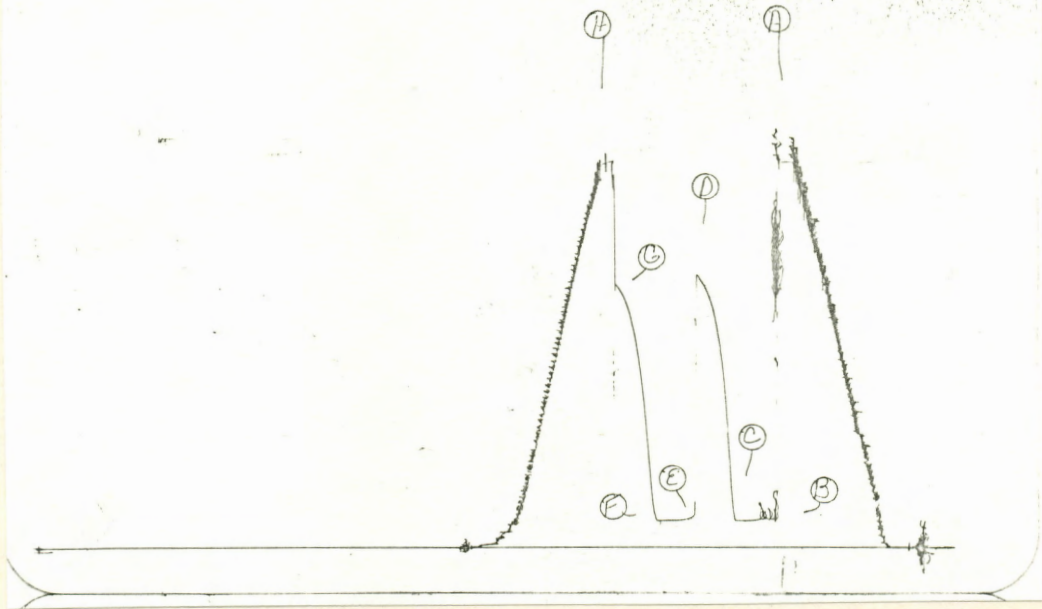
REMARKS: HIT BRIDGES 9 & 8 STANDS OFF BOTTOM.
BOTTOM OF ANCHOR WAS FULL OF CUTTINGS.

TIME SET PACKER(S): 11:15 P.M. TIME STARTED OFF BOTTOM: 1:15 A.M.
WELL TEMPERATURE: 112 °F
INITIAL HYDROSTATIC PRESSURE: (A) 1946 PSI
INITIAL FLOW PERIOD MIN: 30 (B) 31 PSI TO (C) 41 PSI
INITIAL CLOSED IN PERIOD MIN: 33 (D) 1299 PSI
FINAL FLOW PERIOD MIN: 30 (E) 58 PSI TO (F) 58 PSI
FINAL CLOSED IN PERIOD MIN: 30 (G) 1276 PSI
FINAL HYDROSTATIC PRESSURE (H) 1939 PSI

~~13402~~
DST #7

TKT # 4873

I

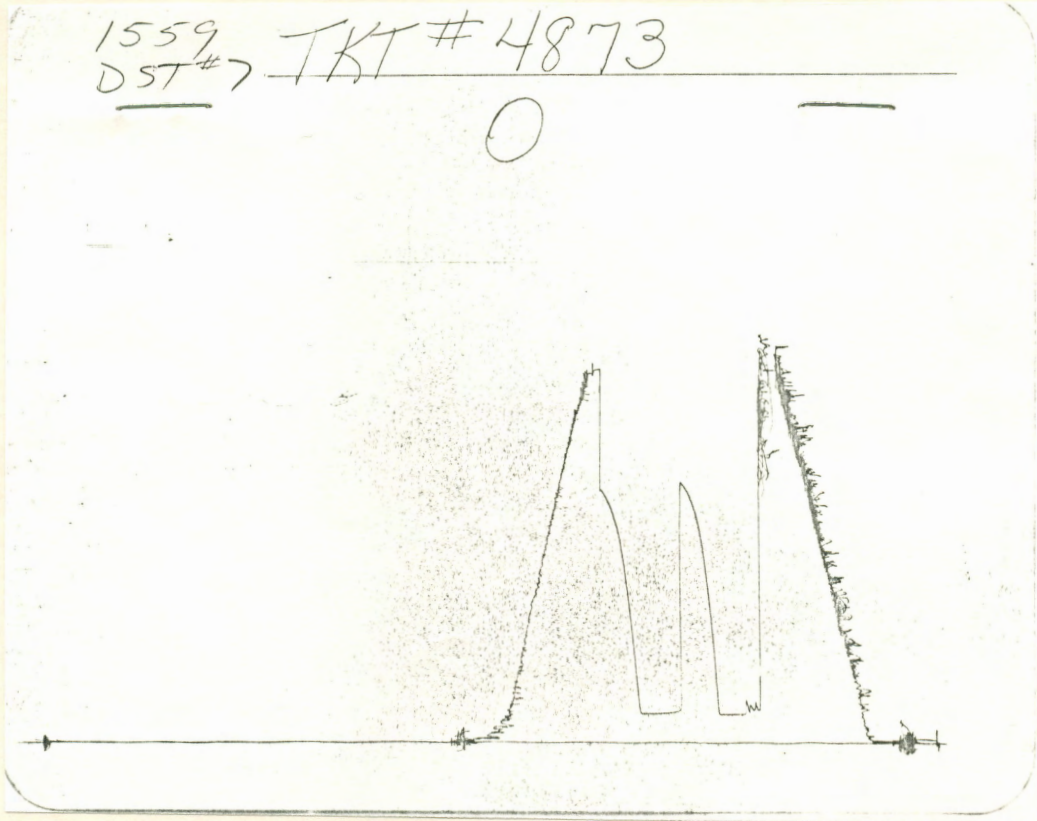


Inside Recorder

1559
DST #7

TKT # 4873

O

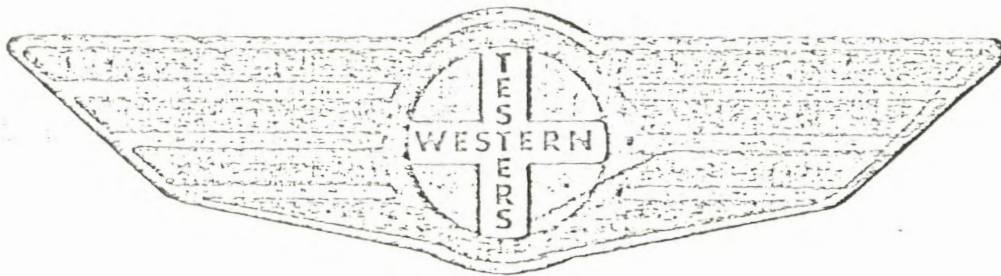


Outside Recorder

FORMATION

TEST

REPORT



Home Office:

Wichita, Kansas 67201

P.O. Box 1599

Phone (316) 262-5861

Company J.A. ALLISON Lease and Well No. #1 BAILEY Sec. 17 Twp. 28S Rge. 12W Test No. 7 Date 6/2/84

WESTERN TESTING COMPANY INC.
SUBSURFACE PRESSURE SURVEY

DATE: 6/2/84 TICKET #4873
CUSTOMER: J.A. ALLISON LEASE: BAILEY
WELL: 1 TEST: 7 GEOLOGIST: CHENEY
ELEVATION (KB): 1863 FORMATION: LANSING
SECTION: 17 TOWNSHIP: 28S
RANGE: 12W COUNTY: PRATT STATE: KANSAS
GAUGE SN #13402 RANGE: 4025 CLOCK: 12

INTERVAL TEST FROM: 4042 FT TO: 4065 FT TOTAL DEPTH: 4065 FT
DEPTH OF SELECTIVE ZONE: FT
PACKER DEPTH: 4037 FT SIZE: 6 3/4 IN PACKER DEPTH: 4042 FT SIZE: 6 3/4 IN
PACKER DEPTH: FT SIZE: IN PACKER DEPTH: FT SIZE: IN

DRILLING CONTRACTOR: UNION
MUD TYPE: CHEMICAL VISCOSITY: 42
WEIGHT: 9.2 WATER LOSS (CC): 10.0
CHLORIDES (P.P.M.): 12000
JARS - MAKE: SERIAL NUMBER:
DID WELL FLOW? NO REVERSED OUT? NO
DRILL COLLAR LENGTH: 150 FT I.D.: 2.25 IN
WEIGHT PIPE LENGTH: FT I.D.: IN
DRILL PIPE LENGTH: 3872 FT I.D.: 3.8 IN
TEST TOOL LENGTH: 20 FT TOOL SIZE: 5 1/2 O.D. IN
ANCHOR LENGTH: 23 FT SIZE: 5 1/2 O.D. IN
SURFACE CHOKE SIZE: 3/4 IN BOTTOM CHOKE SIZE: 3/4 IN
MAIN HOLE SIZE: 7 7/8 IN TOOL JOINT SIZE: 4 1/2 X.H. IN

BLOW: INITIAL FLOW PERIOD; FAIR DECREASING TO WEAK.
FINAL FLOW PERIOD; NO BLOW.

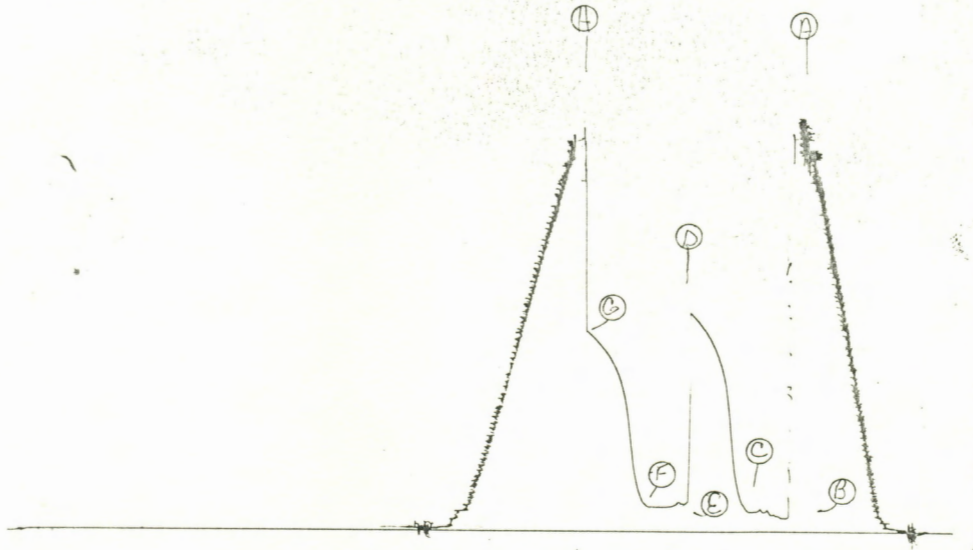
RECOVERED: 210 FT OF: MUD
RECOVERED: FT OF:
RECOVERED: FT OF:
RECOVERED: FT OF:
RECOVERED: FT OF:
RECOVERED: FT OF:
RECOVERED: FT OF:
RECOVERED: FT OF:
RECOVERED: FT OF:
RECOVERED: FT OF:

REMARKS: SLID TOOL 10 FEET TO BOTTOM; LOST MUD WHILE
SLIDING TOOL.

TIME SET PACKER(S): 10:15 P.M. TIME STARTED OFF BOTTOM: 12:15 A.M.
WELL TEMPERATURE: 114 °F
INITIAL HYDROSTATIC PRESSURE: (A) 1985 PSI
INITIAL FLOW PERIOD MIN: 30 (B) 137 PSI TO (C) 137 PSI
INITIAL CLOSED IN PERIOD MIN: 30 (D) 1402 PSI
FINAL FLOW PERIOD MIN: 30 (E) 138 PSI TO (F) 138 PSI
FINAL CLOSED IN PERIOD MIN: 30 (G) 1351 PSI
FINAL HYDROSTATIC PRESSURE (H) 1985 PSI

~~2403~~
DST #8 TKT # 4874

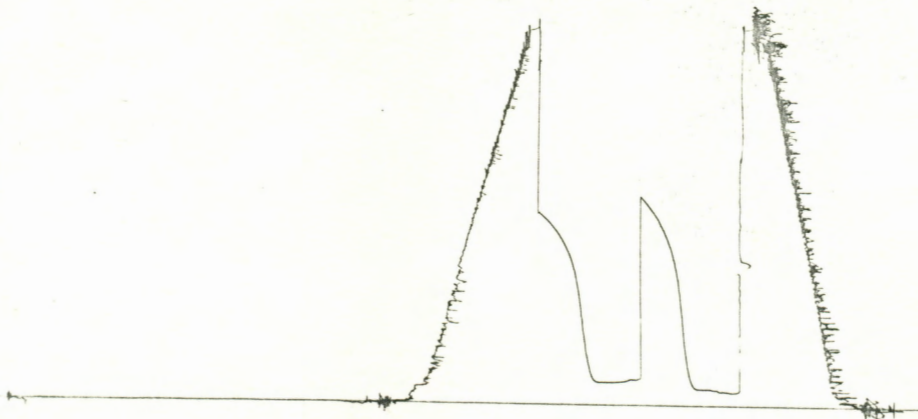
I



Inside Recorder

1559
DST #8 TKT # 4874

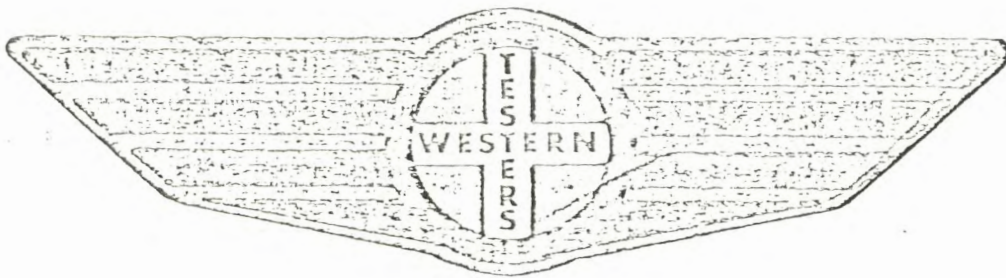
O



FORMATION

TEST

REPORT



Home Office:

Wichita, Kansas 67201

P.O. Box 1599

Phone (316) 262-5861

pany J.A. ALLISON Lease and Well No. #1 BAILEY Sec. 17 Twp. 28S Rge. 12W Test No. 8 Date 6/3/84

WESTERN TESTING COMPANY INC.
SUBSURFACE PRESSURE SURVEY

DATE: 6/3/84
CUSTOMER: J.A. ALLISON
WELL: 1
ELEVATION (KB): 1863
SECTION: 17
RANGE: 12W
GAUGE SN #13402

TEST: 8
FORMATION: LANSING
TOWNSHIP: 28S
COUNTY: PRATT
RANGE: 4025

TICKET #4874
LEASE: BAILEY
GEOLOGIST:
STATE: KANSAS
CLOCK: 12

INTERVAL TEST FROM: 4071 FT TO: 4126 FT TOTAL DEPTH: 4126 FT
DEPTH OF SELECTIVE ZONE: FT
PACKER DEPTH: 4076 FT SIZE: 6 3/4 IN PACKER DEPTH: 4081 FT SIZE: 6 3/4 IN
PACKER DEPTH: FT SIZE: IN PACKER DEPTH: FT SIZE: IN

DRILLING CONTRACTOR: UNION
MUD TYPE: CHEMICAL VISCOSITY: 41
WEIGHT: 9.4 WATER LOSS (CC): 11.2
CHLORIDES (P.P.M.): 11000
JARS - MAKE: SERIAL NUMBER:
DID WELL FLOW? NO REVERSED OUT? NO
DRILL COLLAR LENGTH: 150 FT I.D.: 2.25 IN
WEIGHT PIPE LENGTH: FT I.D.: IN
DRILL PIPE LENGTH: 3911 FT I.D.: 3.8 IN
TEST TOOL LENGTH: 20 FT TOOL SIZE: 5 1/2 O.D. IN
ANCHOR LENGTH: 45 FT SIZE: 5 1/2 O.D. IN
SURFACE CHOKE SIZE: 3/4 IN BOTTOM CHOKE SIZE: 3/4 IN
MAIN HOLE SIZE: 7 7/8 IN TOOL JOINT SIZE: 4 1/2 X.H. IN

BLOW: INITIAL FLOW PERIOD; WEAK SLOWLY BUILDING TO FAIR.
FINAL FLOW PERIOD; WEAK BLOW

RECOVERED: 60 FT OF: MUD
RECOVERED: 60 FT OF: MUD; FEW OIL SPECKS
RECOVERED: 60 FT OF: VERY SLIGHTLY OIL CUT MUD; 2% OIL; 13% WATER;
RECOVERED: 85% MUD FT OF:
RECOVERED: FT OF:
RECOVERED: FT OF:
RECOVERED: FT OF:
RECOVERED: FT OF:
RECOVERED: FT OF:

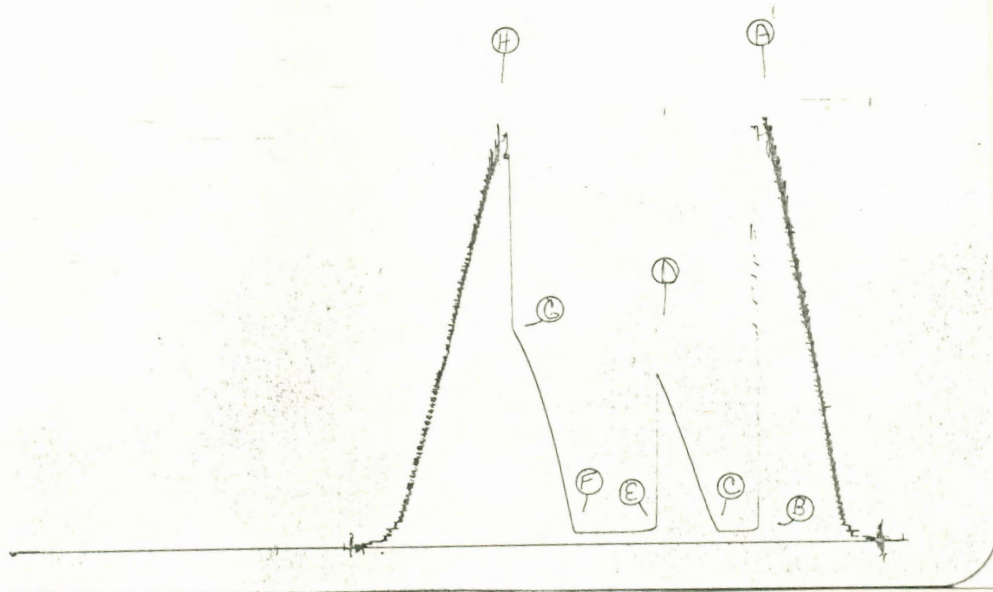
REMARKS: PLUGGING ACTION ON BOTH FLOW PERIODS.

TIME SET PACKER(S): 2:15 P.M. TIME STARTED OFF BOTTOM: 4:45 P.M.
WELL TEMPERATURE: 114 °F
INITIAL HYDROSTATIC PRESSURE: (A) 2026 PSI
INITIAL FLOW PERIOD MIN: 30 (B) 70 PSI TO (C) 99 PSI
INITIAL CLOSED IN PERIOD MIN: 45 (D) 1117 PSI
FINAL FLOW PERIOD MIN: 30 (E) 138 PSI TO (F) 125 PSI
FINAL CLOSED IN PERIOD MIN: 45 (G) 1021 PSI
FINAL HYDROSTATIC PRESSURE (H) 2006 PSI

T3902
DST #9

TKT# 4875

I

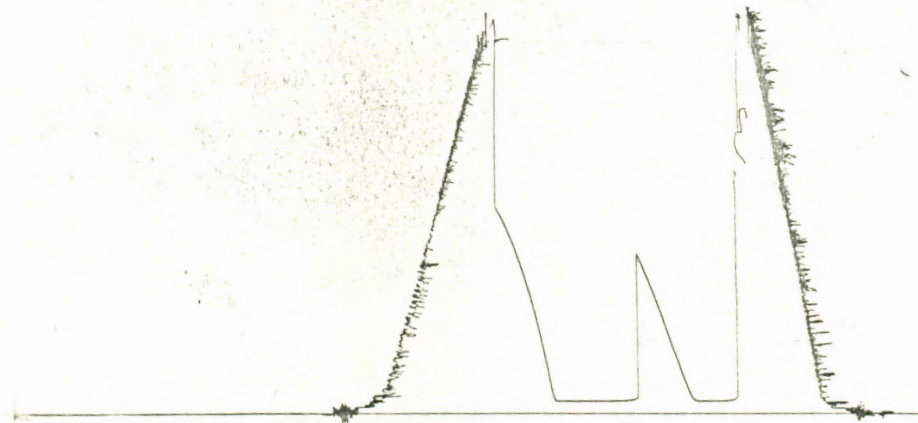


Inside Recorder

T359
DST #9

TKT# 4875

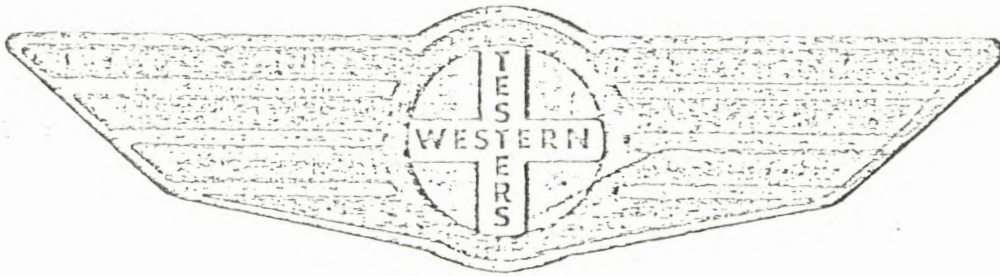
O



FORMATION

TEST

REPORT



Home Office:

Wichita, Kansas 67201

P.O. Box 1599

Phone (316) 262-5861

Company J.A. ALLISON Lease and Well No. #1 BALLEE Sec. 17 Twp. 28S Rge. 12W Test No. 9 Date 6/4/84

WESTERN TESTING COMPANY INC.
SUBSURFACE PRESSURE SURVEY

DATE: 6/4/84
CUSTOMER: J.A. ALLISON
WELL: 1
ELEVATION (KB): 1863
SECTION: 17
RANGE: 12W
GAUGE SN #13402

TEST: 9
FORMATION: MISSISSIPPI
TOWNSHIP: 28S
COUNTY: PRATT
RANGE: 4025

TICKET #4875
LEASE: BAILEY
GEOLOGIST: ALLISON
STATE: KANSAS
CLOCK: 12

INTERVAL TEST FROM: 4216 FT TO: 4270 FT TOTAL DEPTH: 4270 FT
DEPTH OF SELECTIVE ZONE: FT
PACKER DEPTH: 4211 FT SIZE: 6 3/4 IN PAKER DEPTH: 4216 FT SIZE: 6 3/4 IN
PACKER DEPTH: FT SIZE: IN PAKER DEPTH: FT SIZE: IN

DRILLING CONTRACTOR: UNION
MUD TYPE: CHEMICAL VISCOSITY: 41
WEIGHT: 9.4 WATER LOSS (CC): 11.2
CHLORIDES (P.P.M.): 11000
JARS - MAKE: SERIAL NUMBER:
DID WELL FLOW? NO REVERSED OUT? NO
DRILL COLLAR LENGTH: 150 FT I.D.: 2.25 IN
WEIGHT PIPE LENGTH: FT I.D.: IN
DRILL PIPE LENGTH: 4046 FT I.D.: 3.8 IN
TEST TOOL LENGTH: 20 FT TOOL SIZE: 5 1/2 O.D. IN
ANCHOR LENGTH: 54 FT SIZE: 5 1/2 O.D. IN
SURFACE CHOKE SIZE: 3/4 IN BOTTOM CHOKE SIZE: 3/4 IN
MAIN HOLE SIZE: 7 7/8 IN TOOL JOINT SIZE: 4 1/2 X.H. IN

BLOW: INITIAL FLOW PERIOD; FAIR BUILDING TO STRONG.
FINAL FLOW PERIOD; STRONG BLOW.

RECOVERED: 45 FT OF: MUD
RECOVERED: FT OF:
RECOVERED: FT OF:
RECOVERED: FT OF:
RECOVERED: FT OF:
RECOVERED: FT OF:
RECOVERED: FT OF:
RECOVERED: FT OF:
RECOVERED: FT OF:
RECOVERED: FT OF:

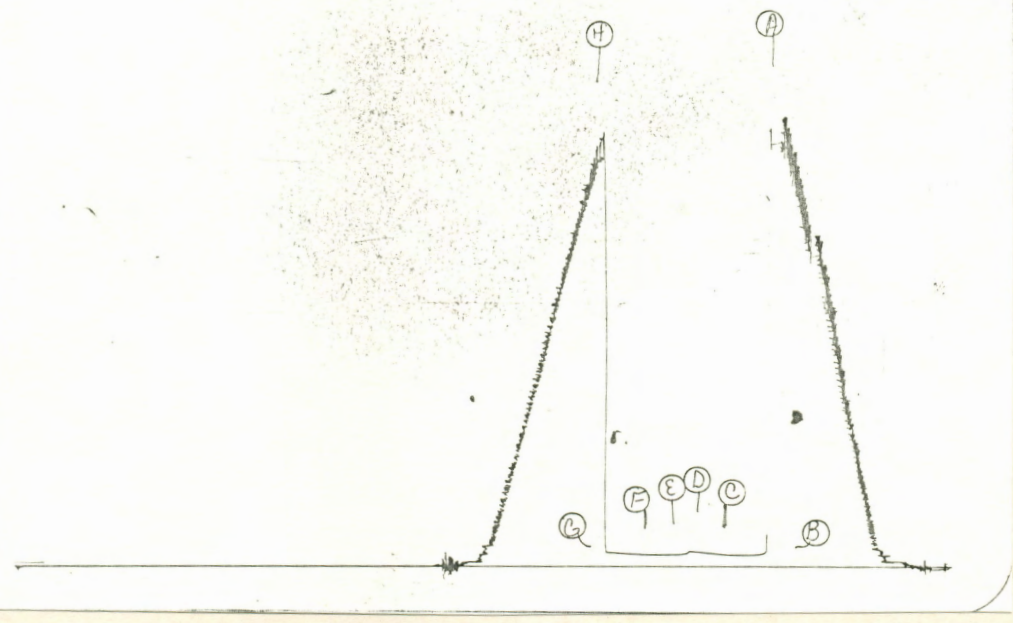
REMARKS:

TIME SET PACKER(S): 12:00 NOON TIME STARTED OFF BOTTOM: 3:00 P.M.
WELL TEMPERATURE: 116 °F
INITIAL HYDROSTATIC PRESSURE: (A) 2093 PSI
INITIAL FLOW PERIOD MIN: 30 (B) 60 PSI TO (C) 61 PSI
INITIAL CLOSED IN PERIOD MIN: 45 (D) 866 PSI
FINAL FLOW PERIOD MIN: 60 (E) 63 PSI TO (F) 63 PSI
FINAL CLOSED IN PERIOD MIN: 45 (G) 1102 PSI
FINAL HYDROSTATIC PRESSURE (H) 2078 PSI

13402
DST #10

TKT #5576

I

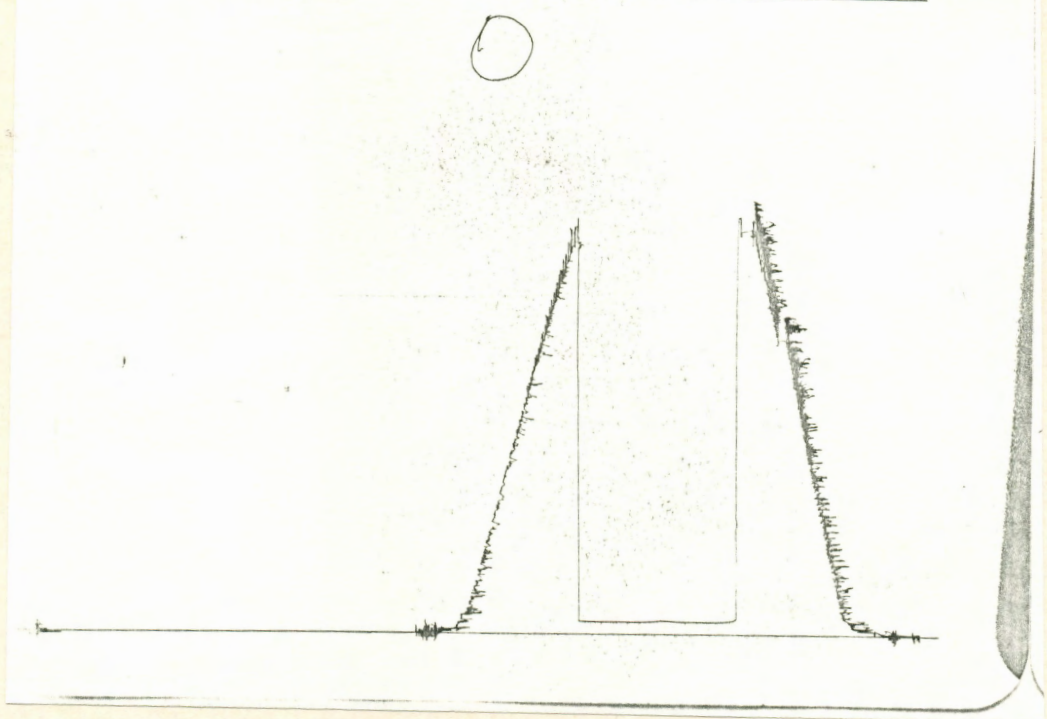


Inside Recorder

1559
DST #10

TKT #5576

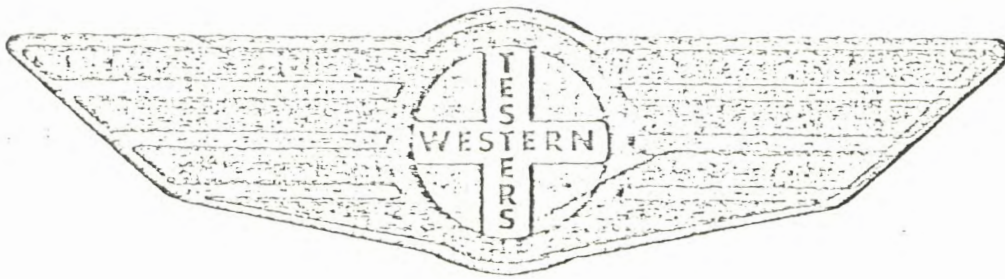
O



FORMATION

TEST

REPORT



Home Office:

Wichita, Kansas 67201

P.O. Box 1599

Phone (316) 262-5861

Company J.A. ALLISON Lease and Well No. #1 RAITEX Sec. 17 Twp. 28S Rge. 12W Test No. 10 Date 6/5/84

WESTERN TESTING COMPANY INC.
SUBSURFACE PRESSURE SURVEY

DATE: 6/5/84 TICKET #5576
CUSTOMER: J.A. ALLISON LEASE: BAILEY
WELL: 1 TEST: 10 GEOLOGIST: CHENEY
ELEVATION (KB): 1863 FORMATION: VIOLA
SECTION: 17 TOWNSHIP: 28S
RANGE: 12W COUNTY: PRATT STATE: KANSAS
GAUGE SN #13402 RANGE: 4025 CLOCK: 12

INTERVAL TEST FROM: 4348 FT TO: 4420 FT TOTAL DEPTH: 4420 FT
DEPTH OF SELECTIVE ZONE: FT
PACKER DEPTH: 4343 FT SIZE: 6 3/4 IN PACKER DEPTH: 4348 FT SIZE: 6 3/4 IN
PACKER DEPTH: FT SIZE: IN PACKER DEPTH: FT SIZE: IN

DRILLING CONTRACTOR: UNION
MUD TYPE: CHEMICAL VISCOSITY: 50
WEIGHT: 9.1 WATER LOSS (CC): 15.6
CHLORIDES (P.P.M.): 10000
JARS - MAKE: SERIAL NUMBER:
DID WELL FLOW? NO REVERSED OUT? NO
DRILL COLLAR LENGTH: 150 FT I.D.: 2.25 IN
WEIGHT PIPE LENGTH: FT I.D.: IN
DRILL PIPE LENGTH: 4178 FT I.D.: 3.8 IN
TEST TOOL LENGTH: 20 FT TOOL SIZE: 5 1/2 O.D. IN
ANCHOR LENGTH: 72 FT SIZE: 5 1/2 O.D. IN
SURFACE CHOKE SIZE: 3/4 IN BOTTOM CHOKE SIZE: 3/4 IN
MAIN HOLE SIZE: 7 7/8 IN TOOL JOINT SIZE: 4 1/2 X.H. IN

BLOW: INITIAL FLOW PERIOD; VERY WEAK
FINAL FLOW PERIOD; NO BLOW.

RECOVERED: 10 FT OF: MUD
RECOVERED: FT OF:
RECOVERED: FT OF:
RECOVERED: FT OF:
RECOVERED: FT OF:
RECOVERED: FT OF:
RECOVERED: FT OF:
RECOVERED: FT OF:
RECOVERED: FT OF:
RECOVERED: FT OF:

REMARKS:

TIME SET PACKER(S): 1:45 P.M. TIME STARTED OFF BOTTOM: 3:45 P.M.
WELL TEMPERATURE: 116 °F
INITIAL HYDROSTATIC PRESSURE: (A) 2178 PSI
INITIAL FLOW PERIOD MIN: 30 (B) 58 PSI TO (C) 60 PSI
INITIAL CLOSED IN PERIOD MIN: 27 (D) 78 PSI
FINAL FLOW PERIOD MIN: 30 (E) 59 PSI TO (F) 59 PSI
FINAL CLOSED IN PERIOD MIN: 30 (G) 71 PSI
FINAL HYDROSTATIC PRESSURE (H) 2107 PSI

