



Home Office: Wichita, Kansas 67201
P.O. Box 1599 (316) 262-5861

Company Petroleum, Inc. Lease & Well No. #1 'H' Sherer
Elevation --- Formation Mississippi Effective Pay - Ft. Ticket No. 13523
Date 3/ 28/82 Sec. 1 Twp. 28S Range 20W County Kiowa State Kansas
Test Approved by Ken Hamlin Western Representative Darrell Claphan

Formation Test No. 1 Interval Tested from 4865 ft. to 4893 ft. Total Depth 4893 ft.
Packer Depth 4860 ft. Size 6 5/8 in. Packer Depth 4865 ft. Size 6 5/8 in.
Packer Depth - ft. Size - in. Packer Depth - ft. Size - in.
Depth of Selective Zone Set -

Top Recorder Depth (Inside) 4876 ft. Recorder Number 10980 Cap. 4200
Bottom Recorder Depth (Outside) 4880 ft. Recorder Number 6233 Cap. 4000
Below Straddle Recorder Depth -- ft. Recorder Number - Cap. -

Drilling Contractor Slawson Drlg. Rig #6 Drill Collar Length 435 I. D. 2.2 in.
Mud Type drispac Viscosity 65 Weight Pipe Length - I. D. - in.
Weight 9.6 Water Loss 10.4 cc. Drill Pipe Length 4401 I. D. 3.8 in.
Chlorides 20,000 P.P.M. Test Tool Length 29 ft. Tool Size 4.5 in.
Jars: Make WTC Serial Number 414 Anchor Length 28 ft. Size 5.5 in.
Did Well Flow? No Reversed Out No Surface Choke Size 3/4 in. Bottom Choke Size 3/4 in.
Main Hole Size 7 7/8 in. Tool Joint Size 4.5 in.

Blow: Weak blow building one fourth inch to four inches on initial flow period. Strong blow slowly dying after thirty minutes - twelve inches to seven inches on final flow period.

Recovered 840 ft. of gas in pipe
Recovered 160 ft. of mud
Recovered 60 ft. of slightly oil and gas cut mud 5% oil; 2% gas No water
Recovered - ft. of -
Recovered - ft. of Good show of oil on top of tool

Remarks: _____

Time Set Packer(s) 12:55 ~~A.M.~~ P.M. Time Started Off Bottom 5:25 ~~A.M.~~ P.M. Maximum Temperature 124°
Initial Hydrostatic Pressure (A) 2516 P.S.I.
Initial Flow Period Minutes 30 (B) 88 P.S.I. to (C) 92 P.S.I.
Initial Closed In Period Minutes 60 (D) 531 P.S.I.
Final Flow Period Minutes 60 (E) 117 P.S.I. to (F) 123 P.S.I.
Final Closed In Period Minutes 123 (G) 399 P.S.I.
Final Hydrostatic Pressure (H) 2445 P.S.I.

WESTERN TESTING CO., INC.
Pressure Data

Date 3/28/82 Recorder No. 10980 Capacity 4200 Test Ticket No. 13523
 Location 4876 Ft. Elevation --- Well Temperature 124 °F

Point	Pressure		Time Given	Time Computed
A Initial Hydrostatic Mud	2516 P.S.I.	Open Tool	12:55P	M
B First Initial Flow Pressure	88 P.S.I.	First Flow Pressure	30 Mins.	30 Mins.
C First Final Flow Pressure	92 P.S.I.	Initial Closed-in Pressure	60 Mins.	60 Mins.
D Initial Closed-in Pressure	531 P.S.I.	Second Flow Pressure	60 Mins.	60 Mins.
E Second Initial Flow Pressure	117 P.S.I.	Final Closed-in Pressure	120 Mins.	123 Mins.
F Second Final Flow Pressure	123 P.S.I.			
G Final Closed-in Pressure	399 P.S.I.			
H Final Hydrostatic Mud	2445 P.S.I.			

PRESSURE BREAKDOWN

First Flow Pressure Breakdown: <u>6</u> Inc. of <u>5</u> mins. and a final inc. of <u>0</u> Min.	Initial Shut-In Breakdown: <u>20</u> Inc. of <u>3</u> mins. and a final inc. of <u>0</u> Min.	Second Flow Pressure Breakdown: <u>12</u> Inc. of <u>5</u> mins. and a final inc. of <u>0</u> Min.	Final Shut-In Breakdown: <u>41</u> Inc. of <u>3</u> mins. and a final inc. of <u>0</u> Min.
--	---	--	---

Point Mins.	Press.	Point Minutes	Press.	Point Minutes	Press.	Point Minutes	Press.
P 1 0	88	0	92	0	117	0	123
P 2 5	88	3	107	5	117	3	124
P 3 10	88	6	131	10	117	6	126
P 4 15	88	9	155	15	117	9	128
P 5 20	89	12	170	20	117	12	130
P 6 25	90	15	202	25	118	15	132
P 7 30	92	18	227	30	119	18	133
P 8		21	252	35	120	21	133
P 9		24	277	40	121	24	135
P10		27	298	45	122	27	138
P11		30	320	50	123	30	142
P12		33	339	55	123	33	144
P13		36	365	60	123	36	147
P14		39	386			39	152
P15		42	408			42	170
P16		45	431			45	185
P17		48	451			48	196
P18		51	471			51	205
P19		54	491			54	210
P20		57	511			57	217
WTC - 4		60	531			60	224

CONTINUED NEXT PAGE

WESTERN TESTING CO., INC.
Pressure Data

Date 3/28/82 Test Ticket No. 13523
 Recorder No. 10980 Capacity 4200 Location 4876 Ft.
 Clock No. --- Elevation --- Well Temperature 124 °F
 Point Pressure Time Given Time Computed
 A Initial Hydrostatic Mud 2516 P.S.I. Open Tool 12:55P M
 B First Initial Flow Pressure 88 P.S.I. First Flow Pressure 30 Mins. 30 Mins.
 C First Final Flow Pressure 92 P.S.I. Initial Closed-in Pressure 60 Mins. 60 Mins.
 D Initial Closed-in Pressure 531 P.S.I. Second Flow Pressure 60 Mins. 60 Mins.
 E Second Initial Flow Pressure 117 P.S.I. Final Closed-in Pressure 120 Mins. 123 Mins.
 F Second Final Flow Pressure 123 P.S.I.
 G Final Closed-in Pressure 399 P.S.I.
 H Final Hydrostatic Mud 2445 P.S.I.

PRESSURE BREAKDOWN

Point Mins.	First Flow Pressure Breakdown: <u>6</u> Inc. of <u>5</u> mins. and a final inc. of <u>0</u> Min.		Initial Shut-In Breakdown: <u>20</u> Inc. of <u>3</u> mins. and a final inc. of <u>0</u> Min.		Second Flow Pressure Breakdown: <u>12</u> Inc. of <u>5</u> mins. and a final inc. of <u>0</u> Min.		Final Shut-In Breakdown: <u>41</u> Inc. of <u>3</u> mins. and a final inc. of <u>0</u> Min.	
	Press.	Point Minutes	Press.	Point Minutes	Press.	Point Minutes	Press.	
P 1						63	231	
P 2						66	237	
P 3						69	241	
P 4						72	242	
P 5						75	245	
P 6						78	246	
P 7						81	247	
P 8						84	249	
P 9						87	251	
P10						90	252	
P11						93	253	
P12						96	266	
P13						99	283	
P14						102	300	
P15						105	317	
P16						108	330	
P17						111	343	
P18						114	360	
P19						117	373	
P20						120	386	
						123	399	



Home Office: Wichita, Kansas 67201
P.O. Box 1599 (316) 262-5861

Company Petroleum, Inc. Lease & Well No. #1 "H" Sherer
Elevation --- Formation Mississippi Effective Pay - Ft. Ticket No. 13524
Date 3/29/82 Sec. 1 Twp. 28S Range 20W County Kiowa State Kansas
Test Approved by Ken Hamlin Western Representative Darrell Claphan

Formation Test No. 2 Interval Tested from 4893 ft. to 4903 ft. Total Depth 4903 ft.
Packer Depth 4888 ft. Size 6 5/8 in. Packer Depth 4893 ft. Size 6 5/8 in.
Packer Depth - ft. Size - in. Packer Depth - ft. Size - in.
Depth of Selective Zone Set -

Top Recorder Depth (Inside) 4905 ft. Recorder Number 10980 Cap. 4200
Bottom Recorder Depth (Outside) 4909 ft. Recorder Number 6233 Cap. 4000
Below Straddle Recorder Depth -- ft. Recorder Number - Cap. -

Drilling Contractor Slawson Drlg. Rig #6 Drill Collar Length 435 I. D. 2.2 in.
Mud Type drispac Viscosity 62 Weight Pipe Length - I. D. - in.
Weight 9.6 Water Loss 10.4 cc. Drill Pipe Length 4437 I. D. 3.8 in.
Chlorides 20,000 P.P.M. Test Tool Length 21 ft. Tool Size 4.5 in.
Jars: Make WTC Serial Number 414 Anchor Length 10 ft. Size 5.5 in.
Did Well Flow? No Reversed Out No Surface Choke Size 3/4 in. Bottom Choke Size 3/4 in.
Main Hole Size 7 7/8 in. Tool Joint Size 4.5 in.

Blow: Weak blow intermittent and dying one fourth inch on initial flow period. Weak blow just off top of water - intermittent - weak building to fair blow -one inch to six inches

Recovered See REMARKS below.
Recovered 240 ft. of gas in pipe
Recovered 30 ft. of mud
Recovered 60 ft. of gas cut mud
Recovered 240 ft. of oil and gas cut mud 23% oil;10% gas;55% mud;12% water
~~Remarks:~~ 60 ft. of slightly oil and gas cut muddy water 3% oil;5% gas;30% mud;62% water
~~XXXXXX~~ 120 fr. of muddy water Chlorides 55,000 ppm

REMARKS: Slid tool approximately 2' to 3' to bottom; no packer seat; pulled loose and reset tool. Got packer seat second time; left open for thirty minutes weak blow building to fair blow 1" to 6".

Time Set Packer(s) 6:35 A.M. Time Started Off Bottom 9:00 P.M. Maximum Temperature 130°
Initial Hydrostatic Pressure (A) 2580 P.S.I.
Initial Flow Period Minutes 15 (B) 236 P.S.I. to (C) 1427 * P.S.I.
Initial Closed In Period Minutes 45 (D) 1432 P.S.I.
Final Flow Period Minutes 45 (E) 1437 P.S.I. to (F) 311 P.S.I.
Final Closed In Period Minutes 60 (G) 1406 P.S.I.
Final Hydrostatic Pressure (H) 2495 P.S.I.

WESTERN TESTING CO., INC.

Pressure Data

Date 3/29/82 Recorder No. 10890 Capacity 4200 Test Ticket No. 13524
 Location 4905 Ft. Elevation 130 Well Temperature 130 °F

Point	Pressure	Time Given	Time Computed
A. Initial Hydrostatic Mud	2580 P.S.I.	6:35A	M
B. First Initial Flow Pressure	236 P.S.I.	15 Mins.	15 Mins.
C. First Final Flow Pressure	1427 * P.S.I.	30 Mins.	45 Mins.
D. Initial Closed-in Pressure	1432 P.S.I.	40 Mins.	45 Mins.
E. Second Initial Flow Pressure	1437 P.S.I.	60 Mins.	60 Mins.
F. Second Final Flow Pressure	311 P.S.I.		
G. Final Closed-in Pressure	1406 P.S.I.		
H. Final Hydrostatic Mud	2495 P.S.I.		

* PRESSURES QUESTIONABLE DUE TO PLUGGED TOOL

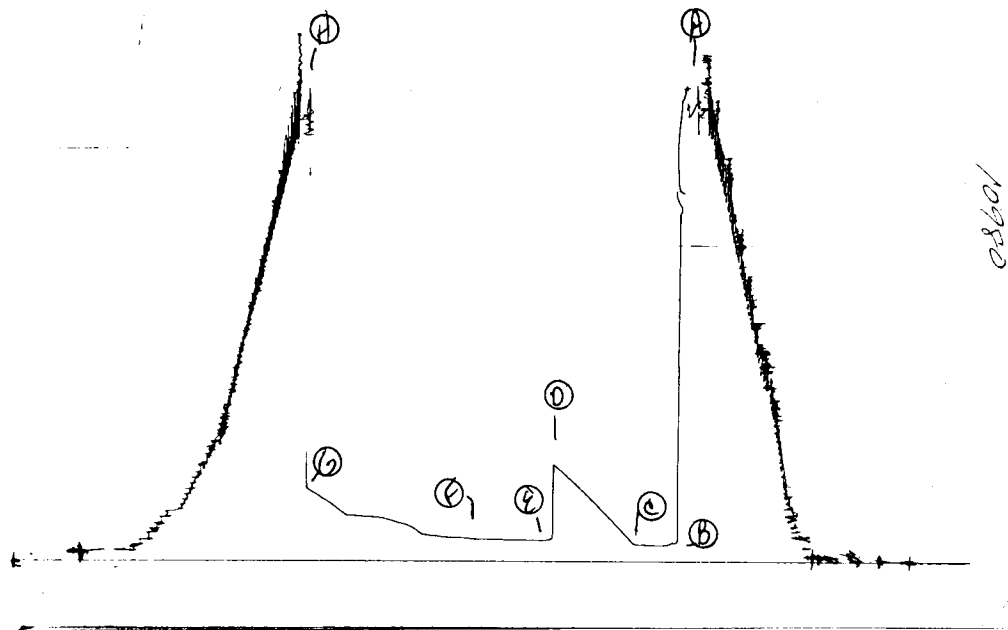
PRESSURE BREAKDOWN

First Flow Pressure Breakdown:		Initial Shut-In Breakdown:		Second Flow Pressure Breakdown:		Final Shut-In Breakdown:	
3 Inc. of 5 mins. and a final inc. of 0 Min.		15 Inc. of 3 mins. and a final inc. of 0 Min.		9 Inc. of 5 mins. and a final inc. of 0 Min.		20 Inc. of 3 mins. and a final inc. of 0 Min.	
Point Mins.	Press.	Point Minutes	Press.	Point Minutes	Press.	Point Minutes	Press.
P 1 0	236	0	1427 *	0	1437	0	311
P 2 5	1408 *	3	1428	5	1439	3	1160
P 3 10	1423 *	6	1429	10	283	6	1297
P 4 15	1427 *	9	1430	15	289	9	1333
P 5		12	1431	20	291	12	1350
P 6		15	1432	25	293	15	1359
P 7		18	1432	30	296	18	1369
P 8		21	1432	35	304	21	1375
P 9		24	1432	40	309	24	1379
P10		27	1432	45	311	27	1384
P11		30	1432			30	1388
P12		33	1432			33	1390
P13		36	1432			36	1392
P14		39	1432			39	1394
P15		42	1432			42	1396
P16		45	1432			45	1397
P17						48	1399
P18						51	1401
P19						54	1403
P20						57	1405
						60	1406

RESET TOOL

Job # 13523

I

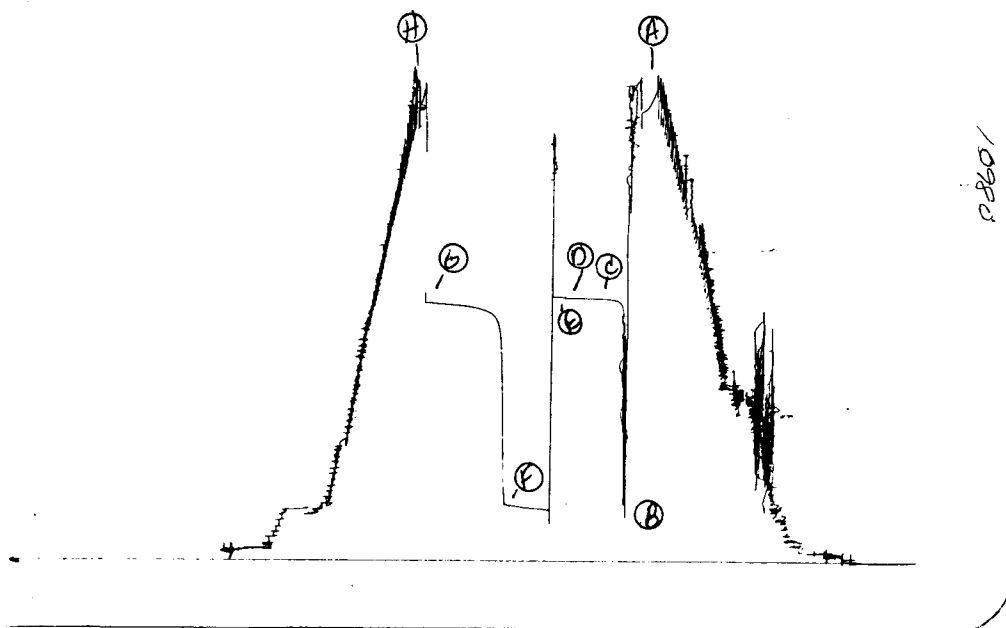


This is an actual photograph of recorder chart.

PRESSURE

POINT	Field Reading	Office Reading	
(A) Initial Hydrostatic Mud	2516	2516	PSI
(B) First Initial Flow Pressure	81	88	PSI
(C) First Final Flow Pressure	81	92	PSI
(D) Initial Closed-in Pressure	487	531	PSI
(E) Second Initial Flow Pressure	101	117	PSI
(F) Second Final Flow Pressure	111	123	PSI
(G) Final Closed-in Pressure	345	399	PSI
(H) Final Hydrostatic Mud	2436	2445	PSI

Job # 13524
I



This is an actual photograph of recorder chart.

POINT	PRESSURE		
	Field Reading	Office Reading	
(A) Initial Hydrostatic Mud	2580	2580	PSI
(B) First Initial Flow Pressure	236	236	PSI
(C) First Final Flow Pressure	PLUGGED	1427	*PSI
(D) Initial Closed-in Pressure	1433	1432	PSI
(E) Second Initial Flow Pressure	268	1437	PSI
(F) Second Final Flow Pressure	311	311	PSI
(G) Final Closed-in Pressure	1391	1406	PSI
(H) Final Hydrostatic Mud	2495	2495	PSI