

Company **Falcon Exploration, Inc.**
 Address **125 N. Market, Ste. 1252**
 CSZ **Wichita, KS 67202**
 Attn. **Keith Reavis**

Lease Name **Goosen**
 Lease # **1-14**
 Legal Desc **See Comments** Job Ticket **2072**
 Section **14** Range **30W**
 Township **28S**
 County **Gray** State **KS**
 Drilling Cont **Val Energy, Inc. Rig #1**

Comments **Legal Description: 1310' FSL & 880' FEL**

15-069-20314

GENERAL INFORMATION

Test # 1 Test Date **1/14/2009**
 Tester **Tim Venters**
 Test Type **Conventional Bottom Hole**
Successful Test

of Packers **2.0** Packer Size **6 3/4**

Mud Type **Gel Chem**
 Mud Weight **8.8** Viscosity **42.0**
 Filtrate **9.2** Chlorides **3200**

Drill Collar Len **0**
 Wght Pipe Len **0**

Formation **Stotler**
 Interval Top **3455.0** Bottom **3557.0**
 Anchor Len Below **102.0** Between **0**
 Total Depth **3557.0**

Blow Type **Strong blow throughout the initial flow period, reaching the bottom of the bucket in 30 seconds. Gas to surface 4 1/2 minutes. Very strong blow throughout the final flow period, hitting the bottom of the bucket instantaneously. Gas to surface, instantaneously. Very weak surface blow back during the final shut-in period, lasting about 30 minutes. Times: 10, 90, 100, 210.**

Chokes **3/4** Hole Size **7 7/8**
 Top Recorder # **W1119**
 Mid Recorder #
 Bott Recorder # **13565**

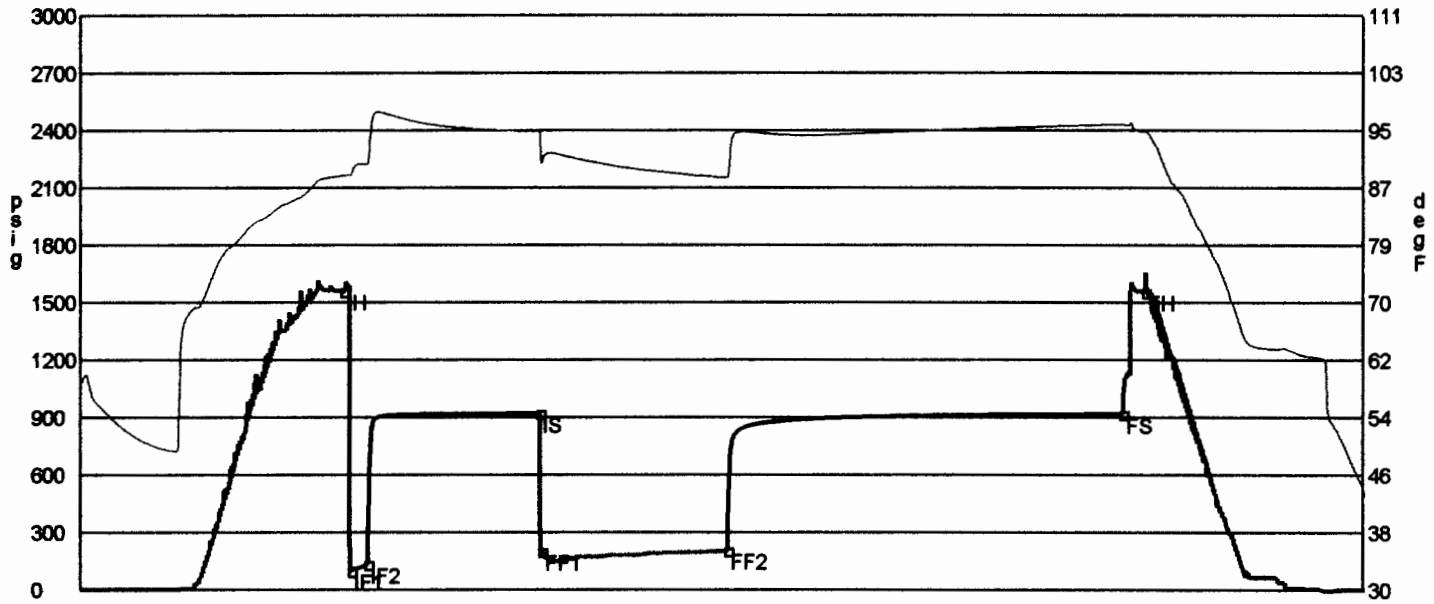
Mileage **228** Approved By
 Standby Time **2**
 Extra Equipmnt **Jars & Safety joint**
 Time on Site **8:15 AM**
 Tool Picked Up **12:00 PM**
 Tool Layed Dwn **10:25 PM**

Elevation **2796.00** Kelley Bushings **2806.00**

Start Date/Time **1/14/2009 11:10 AM**
 End Date/Time **1/14/2009 10:30 PM**

RECOVERY

Feet	Description	Gas	Oil	Water	Mud
3250	Gas in Pipe	100%	0%	0%	0%
180	Mud	0%	0%	0%	100%
DST Fluids	0				



	Date	Time	Pressure	Temp	
IH	1/14/2009 1:28:15 PM	2.304167	1559.399	88.459	Initial Hydro-static
IF1	1/14/2009 1:32:15 PM	2.370833	98.968	88.541	Initial Flow (1)
IF2	1/14/2009 1:41:00 PM	2.516667	133.273	90.068	Initial Flow (2)
IS	1/14/2009 3:12:15 PM	4.0375	920.543	94.715	Initial Shut-In
FF1	1/14/2009 3:13:30 PM	4.058333	201.344	90.177	Final Flow (1)
FF2	1/14/2009 4:52:00 PM	5.7	205.017	88.145	Final Flow (2)
FS	1/14/2009 8:22:00 PM	9.2	917.534	95.691	Final Shut-In
FH	1/14/2009 8:33:45 PM	9.395833	1555.225	94.684	Final Hydro-static

GAS FLOWS

<u>Min Into IFP</u>	<u>Min Into FFP</u>	<u>Gas Flows</u>	<u>Pressure</u>	<u>Choke</u>
8	0	368.00 mcf	28.00 h2o	1.50 in
0	10	526.00 mcf	12.00 psig	1.00 in
0	20	565.00 mcf	13.50 psig	1.00 in
0	30	603.00 mcf	15.00 psig	1.00 in
0	40	627.00 mcf	16.00 psig	1.00 in
0	50	640.00 mcf	16.50 psig	1.00 in
0	60	670.00 mcf	17.50 psig	1.00 in
0	70	687.00 mcf	18.00 psig	1.00 in
0	80	693.00 mcf	18.50 psig	1.00 in
0	90	699.00 mcf	19.00 psig	1.00 in
0	100	699.00 mcf	19.00 psig	1.00 in

Company	Falcon Exploration, Inc.	Lease Name	Goosen	
Address	125 N. Market, Ste. 1252	Lease #	1-14	
CSZ	Wichita, KS 67202	Legal Desc	See Comments	Job Ticket 2072
Attn.	Keith Reavis	Section	14	Range 30W
		Township	28S	
		County	Gray	State KS
		Drilling Cont	Val Energy, Inc. Rig #1	

Comments **Legal Description: 1310' FSL & 880' FEL**

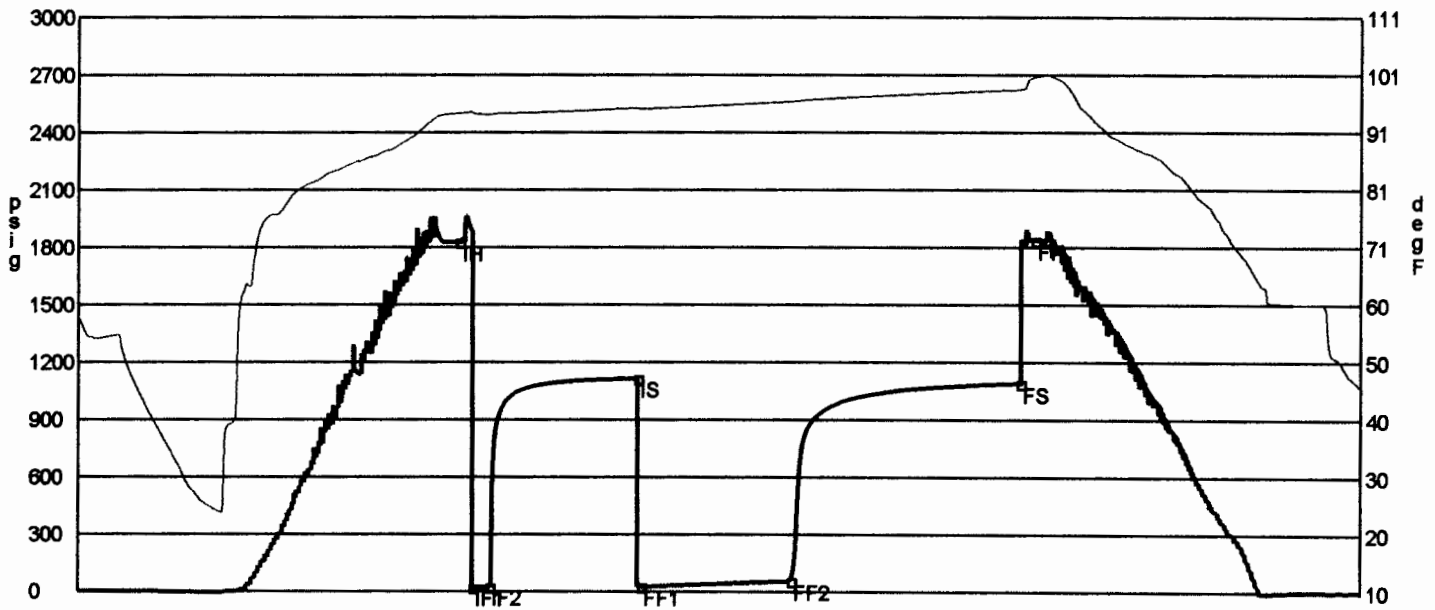
GENERAL INFORMATION

Test # 2	Test Date 1/16/2009	Chokes 3/4	Hole Size 7 7/8
Tester Tim Venters		Top Recorder # W1119	
Test Type Straddle		Mid Recorder #	
		Bott Recorder # 13565	
# of Packers 3.0	Packer Size 6 3/4	Mileage 228	Approved By
		Standby Time 0	
Mud Type Gel Chem		Extra Equipmnt Jars, Safety joint, & Extra packer	
Mud Weight 8.8	Viscosity 49.0	Time on Site 7:30 PM	
Filtrate 11.6	Chlorides 3500	Tool Picked Up 11:00 PM	
		Tool Layed Dwn 6:30 AM	
Drill Collar Len 0		Elevation 2796.00	Kelley Bushings 2806.00
Wght Pipe Len 0			
Formation Topeka		Start Date/Time 1/15/2009 10:05 PM	
Interval Top 3910.0	Bottom 3930.0	End Date/Time 1/16/2009 6:36 AM	
Anchor Len Below 24.0	Between 20.0		
Total Depth 3954.0			
Blow Type Weak blow throughout the initial flow period, building to 1/2 inch. Weak surface blow at the start of the final flow period, building to 7 1/2 inches. Times: 5, 60, 60, 92.			

RECOVERY

Feet	Description	Gas	Oil	Water	Mud
45	Heavy mud cut water	0% 0ft	0% 0ft	65% 29.2ft	35% 15.8ft
65	Mud and water	0% 0ft	0% 0ft	50% 32.5ft	50% 32.5ft

DST Fluids **78000**



	Date	Time	Pressure	Temp	
IH	1/16/2009 12:35:30 AM	2.508333	1827.558	94.21	Initial Hydro-static
IF1	1/16/2009 12:41:00 AM	2.6	22.976	94.326	Initial Flow (1)
IF2	1/16/2009 12:47:30 AM	2.708333	25.171	94.027	Initial Flow (2)
IS	1/16/2009 1:46:30 AM	3.691667	1116.446	95.142	Initial Shut-In
FF1	1/16/2009 1:48:00 AM	3.716667	27.305	94.999	Final Flow (1)
FF2	1/16/2009 2:47:45 AM	4.7125	57.643	96.253	Final Flow (2)
FS	1/16/2009 4:19:15 AM	6.2375	1090.347	98.341	Final Shut-In
FH	1/16/2009 4:25:15 AM	6.3375	1838.049	100.579	Final Hydro-static

GAS FLOWS

Min Into IFP Min Into FFP Gas Flows Pressure Choke

Company	Falcon Exploration, Inc.	Lease Name	Goosen	
Address	125 N. Market, Ste. 1252	Lease #	1-14	
CSZ	Wichita, KS 67202	Legal Desc	See Comments	Job Ticket 2072
Attn.	Keith Reavis	Section	14	Range 30W
		Township	28S	
		County	Gray	State KS
		Drilling Cont	Val Energy, Inc. Rig #1	

Comments **Legal Description: 1310' FSL & 880' FEL**

GENERAL INFORMATION

Test # 3	Test Date 1/16/2009	Chokes 3/4	Hole Size 7 7/8
Tester Tim Venters		Top Recorder # W1119	
Test Type Conventional Bottom Hole		Mid Recorder #	
		Bott Recorder # 13565	
# of Packers 2.0	Packer Size 6 3/4	Mileage 0	Approved By
		Standby Time 0	
Mud Type Gel Chem		Extra Equipmnt Jars & Safety joint	
Mud Weight 8.8	Viscosity 49.0	Time on Site 7:30 PM	
Filtrate 11.6	Chlorides 3500	Tool Picked Up 9:50 AM	
		Tool Layed Dwn 6:00 PM	
Drill Collar Len 0		Elevation 2796.00	Kelley Bushings 2806.00
Wght Pipe Len 0			

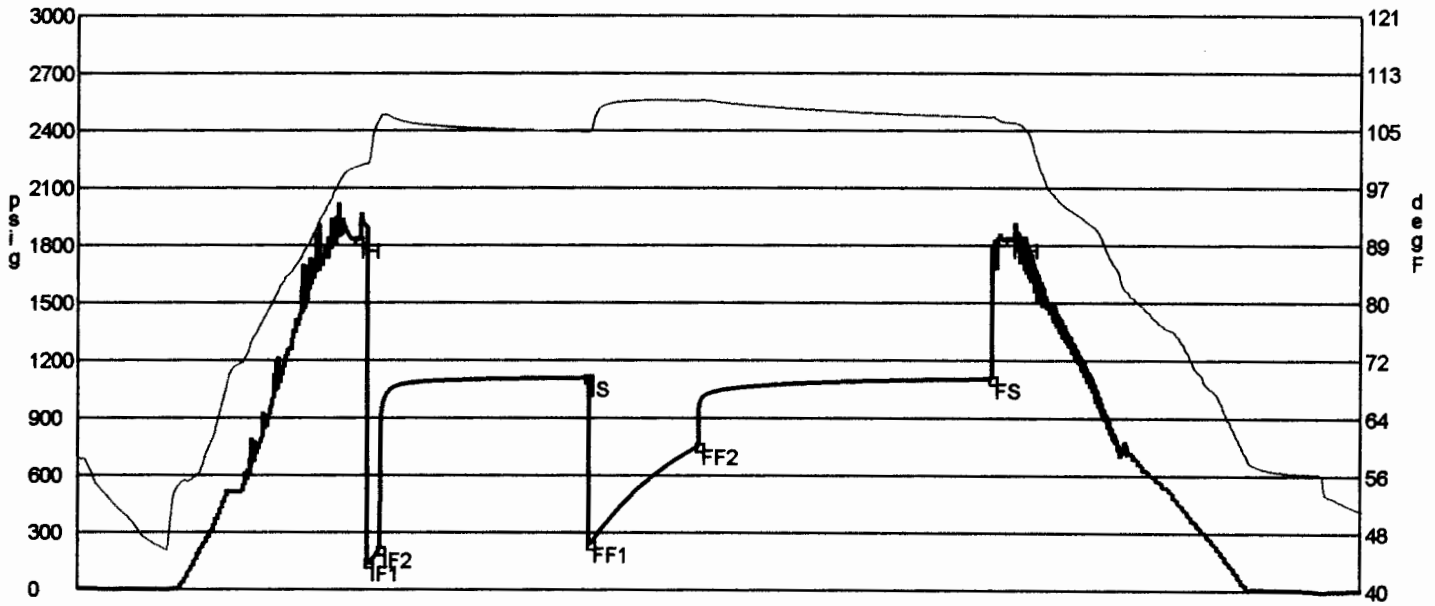
Formation Topeka	Start Date/Time 1/16/2009 9:20 AM
Interval Top 3902.0	End Date/Time 1/16/2009 6:03 PM
Anchor Len Below 52.0	
Total Depth 3954.0	
Blow Type	

Fairly strong blow at the start of the initial flow period, building, reaching the bottom of the bucket in 1 1/2 minutes. Very weak surface blow back during the initial shut-in period, building to 1/4 inch, but ending the period at a weak surface blow. Fairly strong blow at the start of the final flow period, building, reaching the bottom of the bucket in 1 1/2 minutes. Very weak surface blow back during the final shut-in period, lasting about 20 minutes. Times: 5,90, 45, 120.

RECOVERY

Feet	Description	Gas	Oil	Water	Mud
135	Heavy water cut mud	0% 0ft	0% 0ft	38% 51.3ft	62% 83.7ft
125	Heavy mud cut water	0% 0ft	0% 0ft	70% 87.5ft	30% 37.5ft
1230	Gassy, very slight mud cut water	0% 0ft	0% 0ft	97% 1193.1ft	3% 36.9ft
10	Mud	0% 0ft	0% 0ft	0% 0ft	100% 10ft

DST Fluids **146000**



	Date	Time	Pressure	Temp	
IH	1/16/2009 11:12:30 AM	1.875	1831.249	99.74	Initial Hydro-static
IF1	1/16/2009 11:16:45 AM	1.945833	144.09	100.105	Initial Flow (1)
IF2	1/16/2009 11:21:45 AM	2.029167	212.478	106.595	Initial Flow (2)
IS	1/16/2009 12:46:30 PM	3.441667	1110.232	104.691	Initial Shut-In
FF1	1/16/2009 12:47:30 PM	3.458333	242.108	104.693	Final Flow (1)
FF2	1/16/2009 1:31:45 PM	4.195833	756.39	109.086	Final Flow (2)
FS	1/16/2009 3:31:30 PM	6.191667	1104.389	106.754	Final Shut-In
FH	1/16/2009 3:38:30 PM	6.308333	1832.086	105.98	Final Hydro-static

GAS FLOWS

Min Into IFP Min Into FFP Gas Flows Pressure Choke

Company **Falcon Exploration, Inc.**
 Address **125 N. Market, Ste. 1252**
 CSZ **Wichita, KS 67202**
 Attn. **Keith Reavis**

Lease Name **Goosen**
 Lease # **1-14**
 Legal Desc **See Comments** Job Ticket **2072**
 Section **14** Range **30W**
 Township **28S**
 County **Gray** State **KS**
 Drilling Cont **Val Energy, Inc. Rig #1**

Comments **Legal Description: 1310' FSL & 880' FEL**

GENERAL INFORMATION

Test # **4** Test Date **1/18/2009**
 Tester **Tim Venters**
 Test Type **Conventional Bottom Hole**
Successful Test

of Packers **2.0** Packer Size **6 3/4**

Mud Type **Gel Chem**
 Mud Weight **9.0** Viscosity **51.0**
 Filtrate **8.8** Chlorides **5200**

Drill Collar Len **0**
 Wght Pipe Len **0**

Formation **Lansing**
 Interval Top **4196.0** Bottom **4244.0**
 Anchor Len Below **48.0** Between **0**
 Total Depth **4244.0**

Blow Type **Strong blow throughout the initial flow period, reaching the bottom of the bucket in 1 minute. I had my 2 inch flow valve open about 1/2 inch and still blew off bottom. Very strong blow throughout the final flow period, reaching the bottom of the bucket instantaneously. Gas to surface in 2 minutes. Times: 5, 90, 90, 182.**

Chokes **3/4** Hole Size **7 7/8**
 Top Recorder # **W1119**
 Mid Recorder #
 Bott Recorder # **13565**

Mileage **36** Approved By
 Standby Time **0**
 Extra Equipmnt **Jars & Safety joint**
 Time on Site **1:30 PM**
 Tool Picked Up **4:40 PM**
 Tool Layed Dwn **2:05 AM**

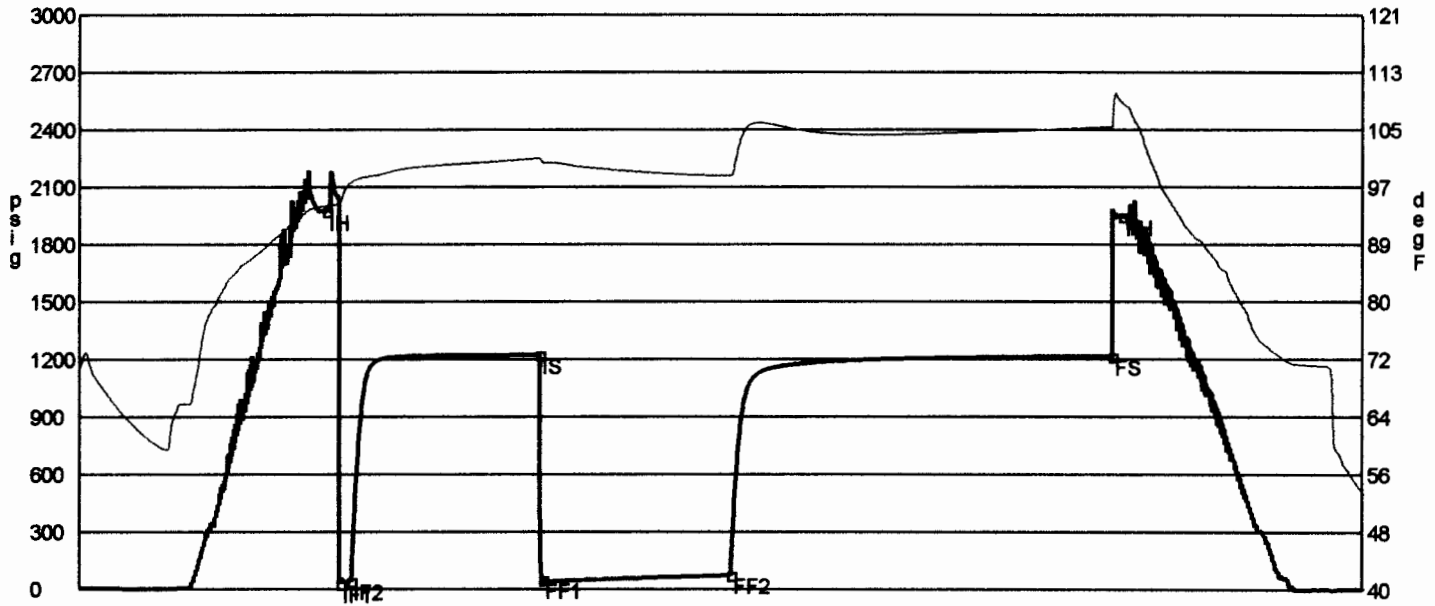
Elevation **2796.00** Kelley Bushings **2806.00**

Start Date/Time **1/17/2009 3:59 PM**
 End Date/Time **1/18/2009 2:08 AM**

RECOVERY

Feet	Description	Gas	Oil	Water	Mud
4030	Gas in Pipe	100% 4030ft	0% 0ft	0% 0ft	0% 0ft
95	Mud	0% 0ft	0% 0ft	0% 0ft	100% 95ft
60	Slight water cut mud	0% 0ft	0% 0ft	8% 4.8ft	92% 55.2ft

DST Fluids **30000**



	Date	Time	Pressure	Temp	
IH	1/17/2009 5:54:45 PM	1.929167	1974.161	94.082	Initial Hydro-static
IF1	1/17/2009 6:01:15 PM	2.0375	29.79	94.379	Initial Flow (1)
IF2	1/17/2009 6:06:30 PM	2.125	41.928	97.356	Initial Flow (2)
IS	1/17/2009 7:36:00 PM	3.616667	1223.878	100.803	Initial Shut-In
FF1	1/17/2009 7:37:30 PM	3.641667	50.075	100.266	Final Flow (1)
FF2	1/17/2009 9:06:45 PM	5.129167	75.002	98.346	Final Flow (2)
FS	1/18/2009 12:08:00 AM	8.15	1216.483	105.239	Final Shut-In
FH	1/18/2009 12:13:00 AM	8.233333	1946.954	108.628	Final Hydro-static

GAS FLOWS

Min Into IFP	Min Into FFP	Gas Flows	Pressure	Choke
0	10	72.40 mcf	26.00 h2o	0.75 in
0	20	66.60 mcf	22.00 h2o	0.75 in
0	30	73.80 mcf	27.00 h2o	0.75 in
0	40	75.10 mcf	28.00 h2o	0.75 in
0	50	75.80 mcf	28.50 h2o	0.75 in
0	60	77.80 mcf	30.00 h2o	0.75 in
0	70	75.10 mcf	28.00 h2o	0.75 in
0	80	76.50 mcf	29.00 h2o	0.75 in
0	90	76.50 mcf	29.00 h2o	0.75 in

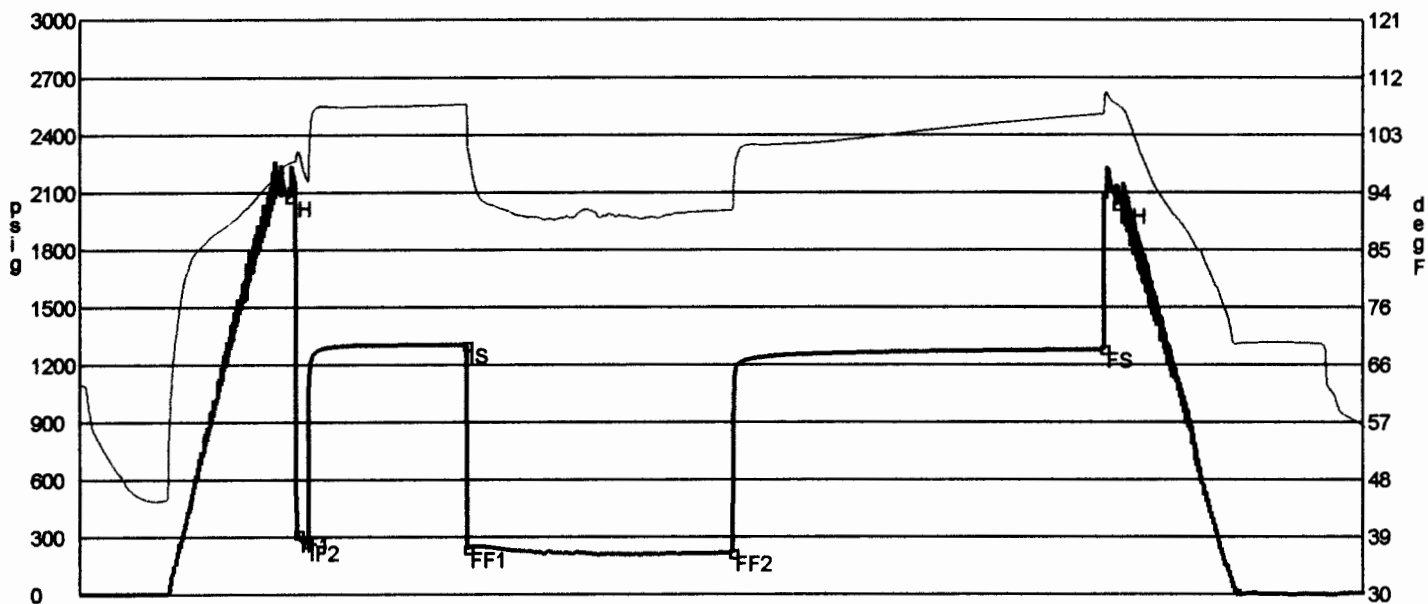
Company	Falcon Exploration, Inc.	Lease Name	Goosen	
Address	125 N. Market, Ste. 1252	Lease #	1-14	
CSZ	Wichita, KS 67202	Legal Desc	See Comments	Job Ticket 2072
Attn.	Keith Reavis	Section	14	Range 30W
		Township	28S	
		County	Gray	State KS
		Drilling Cont	Val Energy, Inc. Rig #1	
Comments	Legal Description: 1310' FSL & 880' FEL			

GENERAL INFORMATION

Test # 5	Test Date 1/19/2009	Chokes 3/4	Hole Size 7 7/8
Tester Tim Venters		Top Recorder # W1119	
Test Type Conventional Bottom Hole		Mid Recorder #	
Successful Test		Bott Recorder # 13565	
# of Packers 2.0	Packer Size 6 3/4	Mileage 36	Approved By
Mud Type Gel Chem		Standby Time 0	
Mud Weight 9.2	Viscosity 51.0	Extra Equipmnt Jars & Safety joint	
Filtrate 8.0	Chlorides 4500	Time on Site 2:30 AM	
Drill Collar Len 0		Tool Picked Up 6:20 AM	
Wght Pipe Len 0		Tool Layed Dwn 5:35 PM	
Formation Lower Kansas City		Elevation 2796.00	Kelley Bushings 2806.00
Interval Top 4402.0	Bottom 4428.0	Start Date/Time 1/19/2009 5:45 AM	
Anchor Len Below 26.0	Between 0	End Date/Time 1/19/2009 5:49 PM	
Total Depth 4428.0			
Blow Type	Very strong blow throughout the initial flow period, reaching the bottom of the bucket instantaneously. Gas to surface in 2 minutes. Very weak surface blow back during the initial shut-in period, building to a 1/4 inch. Very strong blow throughout the final flow period, hitting the bottom of the bucket instantaneously. Gas to surface instantaneously. Very weak surface blow back during the final shut-in period, building to 2 inches. We picked up 1 to 2 points. Times: 5, 90, 150, 210.		

RECOVERY

Feet	Description	Gas	Oil	Water	Mud
4085	Gas in Pipe	100% 4085ft	0% 0ft	0% 0ft	0% 0ft
100	Gassy, slight oil, slight water cut mud	0% 0ft	2% 2ft	8% 6ft	92% 92ft
125	Gassy, slight oil, slight mud cut water	0% 0ft	2% 2.5ft	92% 115ft	6% 7.5ft
65	Gassy water	0% 0ft	0% 0ft	100% 65ft	0% 0ft
DST Fluids	108000				



	Date	Time	Pressure	Temp	
IH	1/19/2009 7:41:30 AM	1.941667	2077.086	98.326	Initial Hydro-static
IF1	1/19/2009 7:46:30 AM	2.025	322.442	100.236	Initial Flow (1)
IF2	1/19/2009 7:51:30 AM	2.108333	276.015	95.961	Initial Flow (2)
IS	1/19/2009 9:21:45 AM	3.6125	1305.243	107.732	Initial Shut-In
FF1	1/19/2009 9:22:30 AM	3.625	239.94	101.282	Final Flow (1)
FF2	1/19/2009 11:51:45 AM	6.1125	218.982	90.946	Final Flow (2)
FS	1/19/2009 3:21:15 PM	9.604167	1283.367	106.108	Final Shut-In
FH	1/19/2009 3:28:15 PM	9.720833	2037.525	107.772	Final Hydro-static

GAS FLOWS

Min Into IFP	Min Into FFP	Gas Flows	Pressure	Choke
5	0	937.00 mcf	13.00 psig	1.25 in
0	10	1023.00 mcf	15.00 psig	1.25 in
0	20	980.00 mcf	14.00 psig	1.25 in
0	30	893.00 mcf	12.00 psig	1.25 in
0	40	802.00 mcf	10.00 psig	1.25 in
0	50	729.00 mcf	8.50 psig	1.25 in
0	60	700.00 mcf	8.00 psig	1.25 in
0	70	653.00 mcf	7.00 psig	1.25 in
0	80	599.00 mcf	6.00 psig	1.25 in
0	90	571.00 mcf	5.50 psig	1.25 in
0	100	542.00 mcf	5.00 psig	1.25 in
0	110	511.00 mcf	4.50 psig	1.25 in
0	120	480.00 mcf	4.00 psig	1.25 in
0	130	480.00 mcf	4.00 psig	1.25 in
0	140	445.00 mcf	3.50 psig	1.25 in
0	150	445.00 mcf	3.50 psig	1.25 in

Company **Falcon Exploration, Inc.**
 Address **125 N. Market, Ste. 1252**
 CSZ **Wichita, KS 67202**
 Attn. **Keith Reavis**

Lease Name **Goosen**
 Lease # **1-14**
 Legal Desc **See Comments** Job Ticket **2072**
 Section **14** Range **30W**
 Township **28S**
 County **Gray** State **KS**
 Drilling Cont **Val Energy, Inc. Rig #1**

Comments **Legal Description: 1310' FSL & 880' FEL**

GENERAL INFORMATION

Test # **6** Test Date **1/20/2009**
 Tester **Tim Venters**
 Test Type **Conventional Bottom Hole**
Successful Test

of Packers **2.0** Packer Size **6 3/4**

Mud Type **Gel Chem**
 Mud Weight **9.1** Viscosity **43.0**
 Filtrate **7.2** Chlorides **5000**

Drill Collar Len **0**
 Wght Pipe Len **0**

Formation **Lower Kansas City**
 Interval Top **4460.0** Bottom **4504.0**
 Anchor Len Below **44.0** Between **0**
 Total Depth **4504.0**

Blow Type **Weak surface blow at the start of the initial flow period, building to 9 inches. Weak surface blow at the start of the final flow period, building, reaching the bottom of the bucket in 9 minutes. We bled off the line at 30 minutes, and it took 8 minutes to reach the bottom of the bucket. It never did blow water out of the bucket. Weak surface blow back at the start of the final shut-in period, building to 9 inches. We picked up 3-4 points. Times: 6, 90, 75, 150.**

Chokes **3/4** Hole Size **7 7/8**
 Top Recorder # **W1119**
 Mid Recorder #
 Bott Recorder # **13565**

Mileage **36** Approved By
 Standby Time **0**
 Extra Equipmnt **Jars & Safety joint**
 Time on Site **6:40 AM**
 Tool Picked Up **7:50 AM**
 Tool Layed Dwn **5:10 PM**

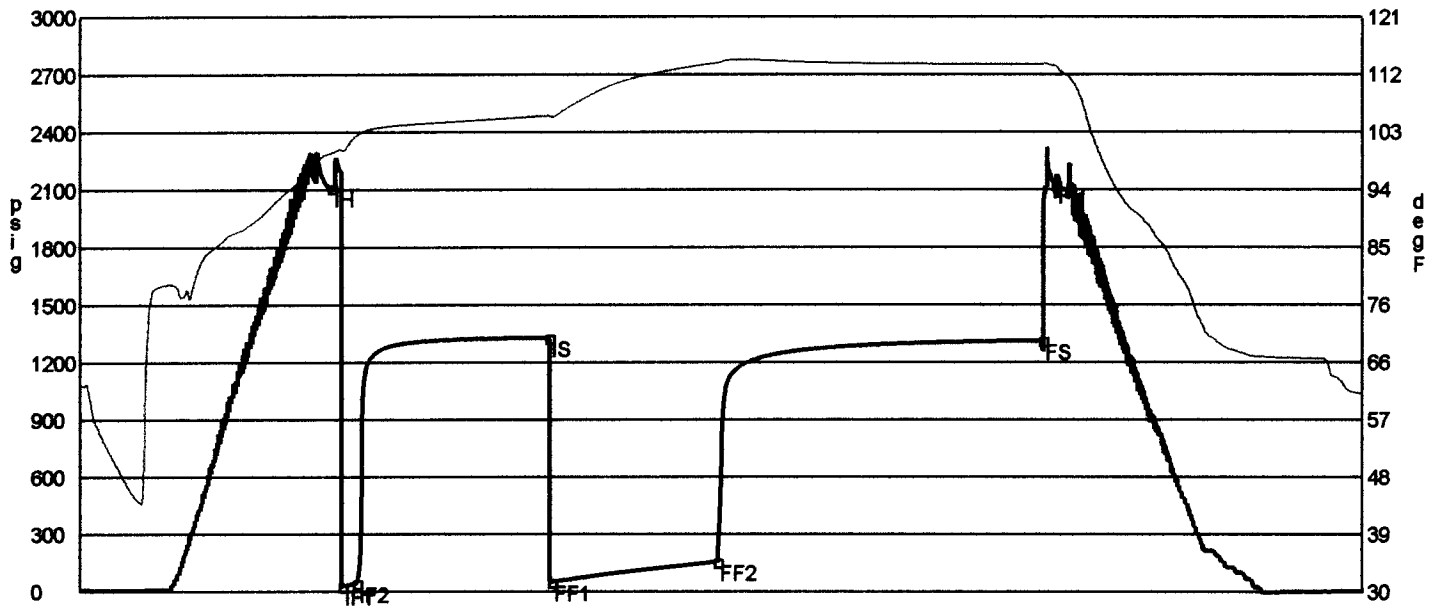
Elevation **2796.00** Kelley Bushings **2806.00**

Start Date/Time **1/20/2009 7:24 AM**
 End Date/Time **1/20/2009 5:12 PM**

RECOVERY

Feet	Description	Gas	Oil	Water	Mud
1000	Gas in Pipe	100% 1000ft	0% 0ft	0% 0ft	0% 0ft
110	Gas, heavy mud cut oil	10% 11ft	53% 58.3ft	0% 0ft	37% 40.7ft
65	Gassy, very slight oil, heavy mud cut water	0% 0ft	1% 0.6ft	61% 39.6ft	38% 24.7ft
125	Gassy, slight mud cut water	0% 0ft	0% 0ft	89% 111.2ft	11% 13.8ft

DST Fluids **84000**



	Date	Time	Pressure	Temp	
IH	1/20/2009 9:17:45 AM	1.895833	2112.878	99.518	Initial Hydro-static
IF1	1/20/2009 9:22:45 AM	1.979167	29.717	100.031	Initial Flow (1)
IF2	1/20/2009 9:29:30 AM	2.091667	43.727	102.232	Initial Flow (2)
IS	1/20/2009 10:57:45 AM	3.5625	1329.841	105.443	Initial Shut-In
FF1	1/20/2009 10:59:00 AM	3.583333	50.322	105.283	Final Flow (1)
FF2	1/20/2009 12:15:00 PM	4.85	156.137	113.749	Final Flow (2)
FS	1/20/2009 2:44:30 PM	7.341667	1313.429	113.584	Final Shut-In
FH	1/20/2009 2:50:15 PM	7.4375	2127.489	113.35	Final Hydro-static

GAS FLOWS

Min Into IFP Min Into FFP Gas Flows Pressure Choke

Company	Falcon Exploration, Inc.	Lease Name	Goosen	
Address	125 N. Market, Ste. 1252	Lease #	1-14	
CSZ	Wichita, KS 67202	Legal Desc	See Comments	Job Ticket 2072
Attn.	Keith Reavis	Section	14	Range 30W
		Township	28S	
		County	Gray	State KS
		Drilling Cont	Val Energy, Inc. Rig #1	

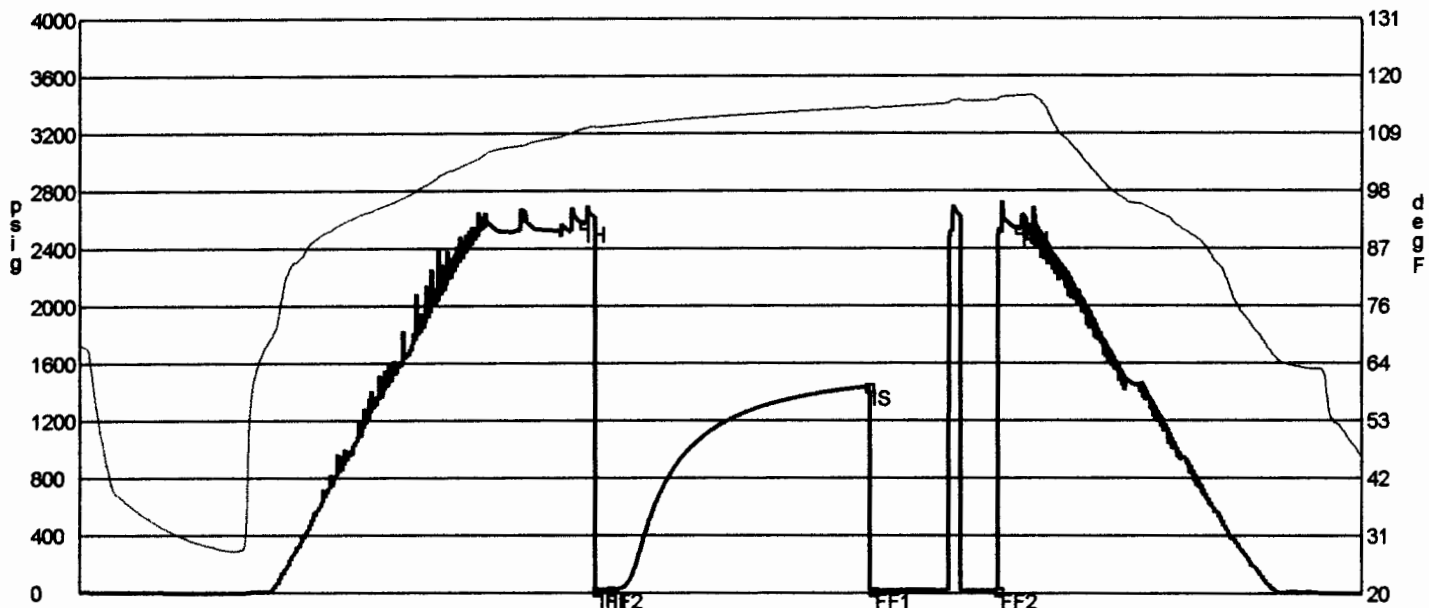
Comments **Legal Description: 1310' FSL & 880' FEL**

GENERAL INFORMATION

Test # 7	Test Date 1/24/2009	Chokes 3/4	Hole Size 7 7/8
Tester Tim Venters		Top Recorder # W1119	
Test Type Conventional Bottom Hole		Mid Recorder #	
		Bott Recorder # 13565	
# of Packers 2.0	Packer Size 6 3/4	Mileage 36	Approved By
		Standby Time 0	
Mud Type Gel Chem		Extra Equipmnt Jars & Safety joint	
Mud Weight 9.3	Viscosity 49.0	Time on Site 4:25 PM	
Filtrate 8.4	Chlorides 3100	Tool Picked Up 6:30 PM	
		Tool Layed Dwn 12:55 AM	
Drill Collar Len 0		Elevation 2796.00	Kelley Bushings 2806.00
Wght Pipe Len 0			
Formation Mississippian		Start Date/Time 1/23/2009 5:33 PM	
Interval Top 5192.0	Bottom 5220.0	End Date/Time 1/24/2009 12:57 AM	
Anchor Len Below 28.0	Between 0		
Total Depth 5220.0			
Blow Type Weak surface blow throughout the initial flow period. No blow throughout the final flow period. We flushed the tool about 27 minutes into the final flow period and just got the surge blow. Times: 5, 90, 45, 0.			

RECOVERY

Feet	Description	Gas	Oil	Water	Mud
10	Drilling mud	0% 0ft	0% 0ft	0% 0ft	100% 10ft
DST Fluids	0				



	Date	Time	Pressure	Temp	
IH	1/23/2009 8:26:00 PM	2.883333	2576.33	109.726	Initial Hydro-static
IF1	1/23/2009 8:30:45 PM	2.9625	21.727	110.085	Initial Flow (1)
IF2	1/23/2009 8:35:30 PM	3.041667	23.309	110.279	Initial Flow (2)
IS	1/23/2009 10:05:15 PM	4.5375	1437.06	113.879	Initial Shut-In
FF1	1/23/2009 10:06:30 PM	4.558333	21.076	113.69	Final Flow (1)
FF2	1/23/2009 10:50:00 PM	5.283333	21.196	115.283	Final Flow (2)
FH	1/23/2009 10:57:15 PM	5.404167	2540.401	116.083	Final Hydro-static

GAS FLOWS

Min Into IFP Min Into FFP Gas Flows Pressure Choke

Company **Falcon Exploration, Inc.**
 Address **125 N. Market, Ste. 1252**
 CSZ **Wichita, KS 67202**
 Attn. **Keith Reavis**

Lease Name **Goosen**
 Lease # **1-14**
 Legal Desc **See Comments** Job Ticket **2072**
 Section **14** Range **30W**
 Township **28S**
 County **Gray** State **KS**
 Drilling Cont **Val Energy, Inc. Rig #1**

Comments **Legal Description: 1310' FSL & 880' FEL**

GENERAL INFORMATION

Test # **8** Test Date **1/24/2009**
 Tester **Tim Venters**
 Test Type **Conventional Bottom Hole**
 Successful Test
 # of Packers **2.0** Packer Size **6 3/4**

Mud Type **Gel Chem**
 Mud Weight **9.3** Viscosity **55.0**
 Filtrate **8.0** Chlorides **3300**

Drill Collar Len **0**
 Wght Pipe Len **0**

Formation **Mississippian**
 Interval Top **5222.0** Bottom **5250.0**
 Anchor Len Below **28.0** Between **0**
 Total Depth **5250.0**
 Blow Type

Weak surface blow at the start of the initial flow period, building to 1/4 inch.
Weak surface blow throughout the final flow period. We flushed the tool about
20 minutes into the final flow period and still just got a weak surface blow.
Times: 5, 90, 60, 92.

Chokes **3/4** Hole Size **7 7/8**
 Top Recorder # **W1119**
 Mid Recorder #
 Bott Recorder # **13565**

Mileage **36** Approved By
 Standby Time **0**
 Extra Equipmnt **Jars & Safety joint**
 Time on Site **10:00 AM**
 Tool Picked Up **1:15 PM**
 Tool Layed Dwn **9:15 PM**

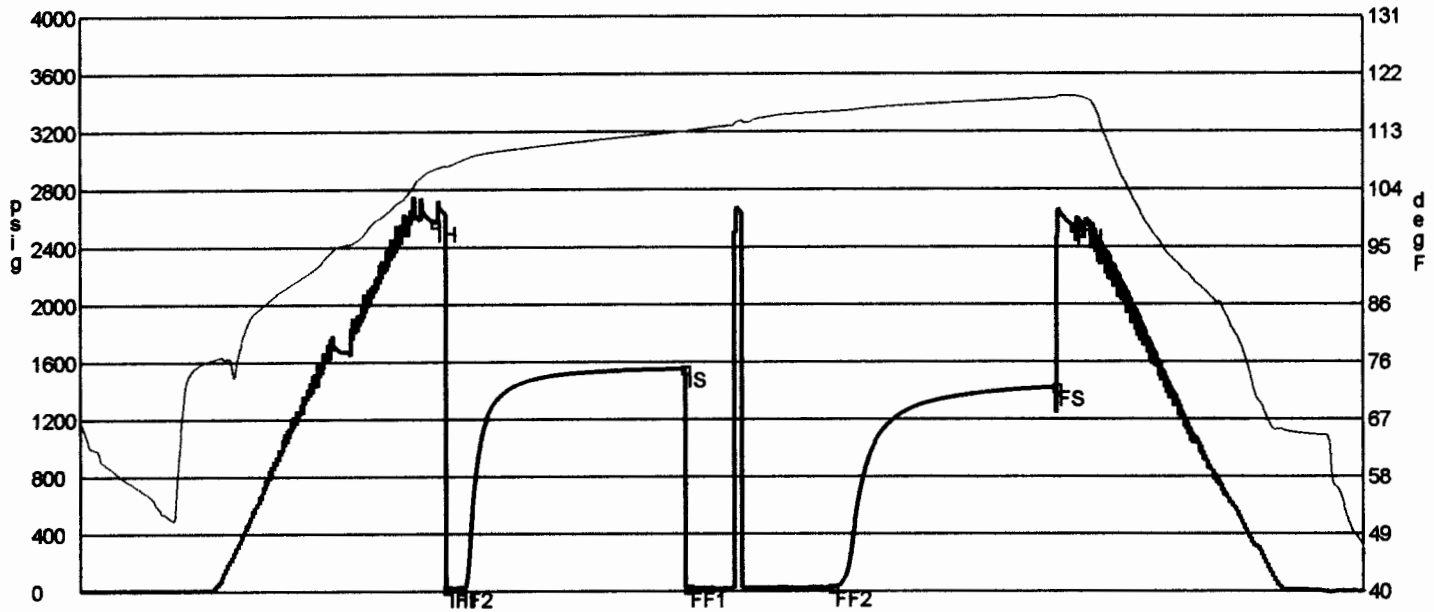
Elevation **2796.00** Kelley Bushings **2806.00**

Start Date/Time **1/24/2009 12:27 PM**
 End Date/Time **1/24/2009 9:07 PM**

RECOVERY

Feet	Description	Gas	Oil	Water	Mud
20	Very slight (trace) oil cut mud	0% 0ft	trace	0% 0ft	100% 20ft

DST Fluids **0**



	Date	Time	Pressure	Temp	
IH	1/24/2009 2:49:15 PM	2.370833	2573.405	106.866	Initial Hydro-static
IF1	1/24/2009 2:54:00 PM	2.45	20.851	107.314	Initial Flow (1)
IF2	1/24/2009 2:59:30 PM	2.541667	21.069	108.142	Initial Flow (2)
IS	1/24/2009 4:30:45 PM	4.0625	1553.577	112.878	Initial Shut-In
FF1	1/24/2009 4:31:45 PM	4.079167	22.712	112.803	Final Flow (1)
FF2	1/24/2009 5:30:30 PM	5.058333	27.743	115.948	Final Flow (2)
FS	1/24/2009 7:01:30 PM	6.575	1422.798	118.11	Final Shut-In
FH	1/24/2009 7:08:45 PM	6.695833	2546.048	118.379	Final Hydro-static

GAS FLOWS

Min Into IFP Min Into FFP Gas Flows Pressure Choke

Company	Falcon Exploration, Inc.	Lease Name	Goosen	
Address	125 N. Market, Ste. 1252	Lease #	1-14	
CSZ	Wichita, KS 67202	Legal Desc	See Comments	Job Ticket 2072
Attn.	Keith Reavis	Section	14	Range 30W
		Township	28S	
		County	Gray	State KS
		Drilling Cont	Val Energy, Inc. Rig #1	

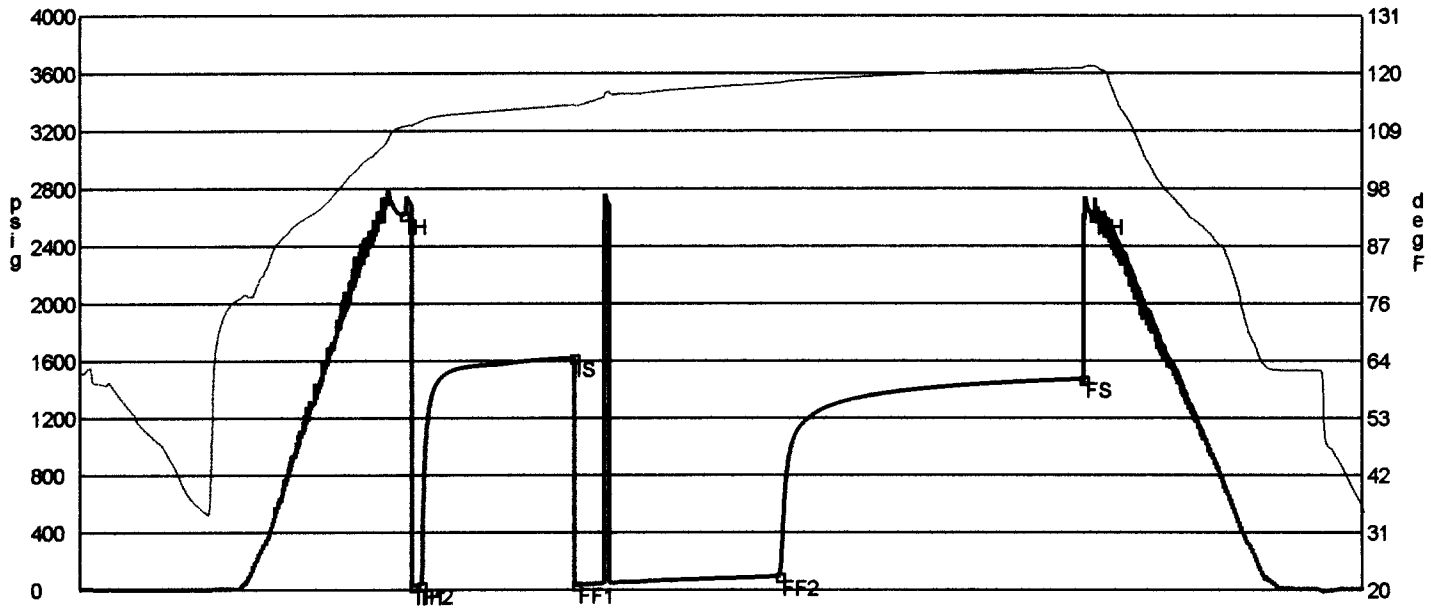
Comments **Legal Description: 1310' FSL & 880' FEL**

GENERAL INFORMATION

Test # 9	Test Date 1/26/2009	Chokes 3/4	Hole Size 7 7/8
Tester Tim Venters		Top Recorder # W1119	
Test Type Conventional Bottom Hole		Mid Recorder #	
		Bott Recorder # 13310	
# of Packers 2.0	Packer Size 6 3/4	Mileage 36	Approved By
		Standby Time 0	
Mud Type Gel Chem		Extra Equipmnt Jars & Safety joint	
Mud Weight 9.4	Viscosity 44.0	Time on Site 9:15 PM	
Filtrate 8.8	Chlorides 4400	Tool Picked Up 11:35 PM	
		Tool Layed Dwn 10:55 AM	
Drill Collar Len 0		Elevation 2796.00	Kelley Bushings 2806.00
Wght Pipe Len 0			
Formation Mississippian		Start Date/Time 1/25/2009 10:22 PM	
Interval Top 5310.0	Bottom 5406.0	End Date/Time 1/26/2009 10:57 AM	
Anchor Len Below 96.0	Between 0		
Total Depth 5406.0			
Blow Type Weak surface blow at the start of the initial flow period, building to 1 inch. Very weak surface blow at the start of the final flow period, building to 9 inches. We flushed the tool about 20 minutes into the final flow period and just got the 1/2 inch blow we already had. Times: 5, 90, 120, 180.			

RECOVERY

Feet	Description	Gas	Oil	Water	Mud
105	Mud	0% 0ft	0% 0ft	0% 0ft	100% 105ft
65	Water cut mud	0% 0ft	0% 0ft	20% 13ft	80% 52ft
DST Fluids 26000					



	Date	Time	Pressure	Temp	
IH	1/26/2009 1:31:15 AM	3.154167	2619.915	109.694	Initial Hydro-static
IF1	1/26/2009 1:36:45 AM	3.245833	30.925	109.949	Initial Flow (1)
IF2	1/26/2009 1:41:15 AM	3.320833	33.985	110.684	Initial Flow (2)
IS	1/26/2009 3:11:15 AM	4.820833	1622.805	113.889	Initial Shut-In
FF1	1/26/2009 3:12:15 AM	4.8375	38.47	113.739	Final Flow (1)
FF2	1/26/2009 5:12:15 AM	6.8375	95.532	118.104	Final Flow (2)
FS	1/26/2009 8:11:15 AM	9.820833	1474.101	120.953	Final Shut-In
FH	1/26/2009 8:17:15 AM	9.920833	2612.291	121.296	Final Hydro-static

GAS FLOWS

Min Into IFP Min Into FFP Gas Flows Pressure Choke