

15-187-20301

**KANSAS DRILLERS LOG**

API No. 15 \_\_\_\_\_ County \_\_\_\_\_ Number \_\_\_\_\_

S. 21 T. 28 R. 40W <sup>E</sup>/<sub>W</sub>  
 Loc. C NE  
 County Stanton

Operator  
 Beren Corporation

Address  
 970 Fourth Financial Center, Wichita, Kansas 67202

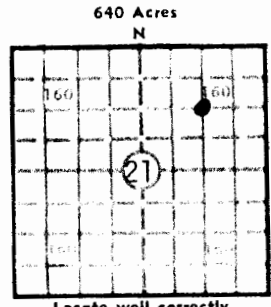
Well No. 1 Lease Name RAMSEY

Footage Location  
 feet from (N) (S) line \_\_\_\_\_ feet from (E) (W) line \_\_\_\_\_

Principal Contractor Lakin Drilling Geologist \_\_\_\_\_

Spud Date December 6, 1978 Total Depth 2350 P.B.T.D. \_\_\_\_\_

Date Completed December 10, 1978 Oil Purchaser \_\_\_\_\_



Locate well correctly  
 Elev.: Gr. 3275  
 DF \_\_\_\_\_ KB \_\_\_\_\_

**CASING RECORD**

Report of all strings set — surface, intermediate, production, etc.

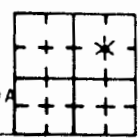
Purpose of string	Size hole drilled	Size casing set (in O.D.)	Weight lbs/ft.	Setting depth	Type cement	Sacks	Type and percent additives
Surface	12¼	8-5/8	20	600	Lite Class "H"	200 100	3% CC
Production		5½		2349	60-40 poz	300	10% salt, 2% 3/4 of 1% CFR-
Sand and Clay				0		294	
Sand and Shale				294		550	
B1 Shale				550		608	
B1 Shale				608		1350	
Sand and Shale				1350		1672	
Shale and Anhydrite				1672		1793	
Anhydrite and Shale				1793		2075	
Lime with Shale				2075		2350	
T.D.				2350			

BEREN CORPORATION  
 970 4TH FINANCIAL CTR.  
 WICHITA, KS.  
 CONTR LAKIN DRILLING CITY STANTON  
 GEOL \_\_\_\_\_ FIELD HUGOTON

12-79 #1 RAMSEY

21-28-40W APPX. C NE/4

E 3280 KB CM 12/7/78 CARD ISSUED 12/6/79 IP COF 1214 MCFGPD & WTR  
 API 15-187-20,301 HER-KRI 2252-2276 OA



LOG	TOPS	DEPTH	DATUM
HOLL		2221	+1059
HER		2248	+1032
KRI		2254	+1016
WLN		2310	+ 970
RTD		2350	+ 930

8-5/8" 600/300sx, 5½" 2349/300sx  
 NO DST'S  
 MICT - CO, PF 2266-76, 2252-60, AC  
 1500 GAL & 40 BS, AC 6000 GAL (28%) &  
 6000 GAL GELLED KCL WTR, SWB ½ BFPH,  
 FRAC W/100,000#SD, 50,000 GAL SLICK  
 WTR, ISIP 300#, VAC 5", TST 87#, 527  
 MCF KO FLO, RAN R, POP, POL, SI TST  
 437 MCFGPD @ 201#, 4 PT OF 1214 MCFGPD  
 19 BW/12 HRS