

15-095-21776

RECEIVED
MAY 07 2002
KCC WICHITA



RELEASED

JUN 18 2003

DRILL STEM TEST REPORT

FROM CONFIDENTIAL

Prepared For: **Lario Oil & Gas Co.**

301 S. Market
Wichita KS 67202

ATTN: Terry McLeod

11-28S-5W

Bolinger "A" 1-11

Start Date: 2001.03.12 @ 20:05:00

End Date: 2001.03.13 @ 02:10:00

Job Ticket #: 13988 DST #: 1

Trilobite Testing, Inc
PO Box 362 Hays, KS 67601
ph: 785-625-4778 fax: 785-625-5620

Lario Oil & Gas Co.

Bolinger "A" 1-11

11-28S-5W

DST #: 1

Mississippi Chert

2001.03.12



**TRILOBITE
TESTING, INC**

DRILL STEM TEST REPORT

Lario Oil & Gas Co.

RELEASED

Bolinger "A" 1-11

301 S. Market
Wichita KS 67202

JUN 18 2003

11-28S-5W

Job Ticket: 13988

DST#: 1

ATTN: Terry McLeod

FROM CONFIDENTIAL

Test Start: 2001.03.12 @ 20:05:00

GENERAL INFORMATION:

RECEIVED

MAY 07 2003

KCC WICHITA

Formation: **Mississippi Chert**
Deviated: No Whipstock: ft (KB)
Time Tool Opened: 21:37:55
Time Test Ended: 02:10:00

Test Type: Conventional Bottom Hole
Tester: Lanny Saloga
Unit No: 14

Interval: **3761.00 ft (KB) To 3778.00 ft (KB) (TVD)**
Total Depth: 3778.00 ft (KB)
Hole Diameter: 7.88 inches Hole Condition: Fair

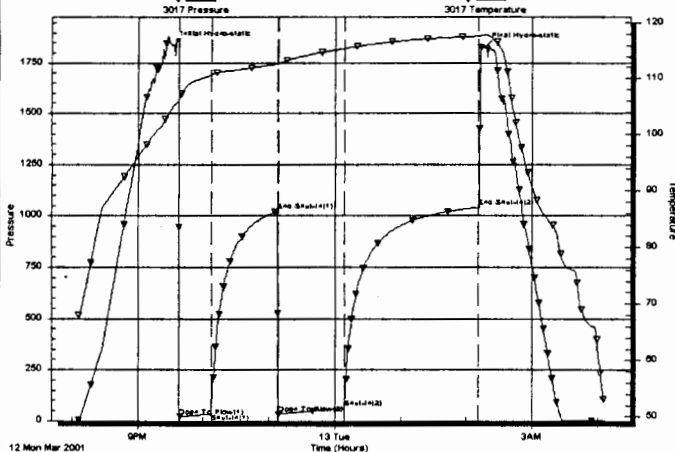
Reference Elevations: 1394.00 ft (KB)
1386.00 ft (CF)
KB to GR/CF: 8.00 ft

Serial #: **3017** Inside
Press@RunDepth: 58.14 psig @ 3766.00 ft (KB)
Start Date: 2001.03.12 End Date: 2001.03.13
Start Time: 20:05:15 End Time: 04:05:24

Capacity: 7000.00 psig
Last Calib.: 2001.03.11
Time On Btm: 2001.03.12 @ 21:32:25
Time Off Btm: 2001.03.13 @ 02:16:55

TEST COMMENT: Strong OBB in 1 min. Cracked 2" slightly. I.F.P.
No blow-back. I.S.I.P Est. 17 Ft. of Pay.
Strong immed. GTS in 2 min. See flow chart. F.F.P.
No blow-back. F.S.I.P. Rec. RW .49 at 37 F. 26,500 PPM. IF: Strong bob in 1 min. Cracked 2"

Pressure vs. Time



PRESSURE SUMMARY

Time (Min.)	Pressure (psig)	Temp (deg F)	Annotation
88	1835.70	105.00	Initial Hydro-static
93	19.41	106.33	Open To Flow (1)
122	32.39	110.64	Shut-In(1)
182	1023.06	112.56	End Shut-In(1)
183	31.65	112.61	Open To Flow (2)
244	58.14	115.38	Shut-In(2)
366	1041.24	117.60	End Shut-In(2)
372	1825.73	117.83	Final Hydro-static

Recovery

Length (ft)	Description	Volume (bbl)
0.00	3642 GIP	0.00
40.00	Sli Gas cut Mud 5%G 95%M	0.56
65.00	Gassy Mud cut Wtr w/scum of Oil 5%G 57	0.91

Gas Rates

	Choke (inches)	Pressure (psig)	Gas Rate (Mcf/d)
First Gas Rate	0.13	1.00	5.76
Last Gas Rate	0.13	3.00	6.51
Max. Gas Rate	0.13	3.00	6.51



**TRILOBITE
TESTING, INC**

DRILL STEM TEST REPORT

TOOL DIAGRAM

Lario Oil & Gas Co.

Bolinger "A" 1-11

301 S. Market
Wichita KS 67202

11-28S-5W

Job Ticket: 13988

DST#: 1

ATTN: Terry McLeod

Test Start: 2001.03.12 @ 20:05:00

Tool Information

Drill Pipe:	Length: 3747.00 ft	Diameter: 3.80 inches	Volume: 52.56 bbl	Tool Weight: 1800.00 lb
Drill Collar:	Length: 0.00 ft	Diameter: 2.25 inches	Volume: 0.00 bbl	Weight set on Packer: 20000.00 lb
Heavy Wt. Pipe:	Length: 0.00 ft	Diameter: 0.00 inches	Volume: 0.00 bbl	Weight to Pull Loose: 11000.00 lb
Drill Pipe Above KB:	8.00 ft			Tool Chased ft
Depth to Top Packer:	3756.00 ft			String Weight: Initial 48000.00 lb
Depth to Bottom Packer:	ft			Final 49000.00 lb
Interval between Packers:	ft			
Tool Length:	39.00 ft			
Number of Packers:	2	Diameter: 6.75 inches		

RECEIVED

MAY 07 2002

KCC WICHITA

Tool Comments

Strong OBB in 1 min. Cracked 2" slightly. I.F.P.
No blow-back. I.S.I.P Est. 17 Ft. of Pay.

Tool Description	Length (ft)	Serial No.	Position	Depth (ft)	Accum. Lengths
C.O. Sub	1.00			3740.00	
S.I. Tool	5.00			3745.00	
HMV	5.00			3750.00	
Safety Joint	2.00			3752.00	
Packer	4.00			3756.00	17.00 Bottom Of Top Packer
Packer	5.00			3761.00	
Stubb	1.00			3762.00	
Perforations	4.00			3766.00	
Recorder	0.00	3017	Inside	3766.00	
Perforations	10.00			3776.00	
Recorder	0.00	10242	Inside	3776.00	
Bullnose	2.00			3778.00	22.00 Bottom Packers & Anchor

Total Tool Length: 39.00



**TRILOBITE
TESTING, INC**

DRILL STEM TEST REPORT

FLUID SUMMARY

Lario Oil & Gas Co.

Bolinger "A" 1-11

301 S. Market
Wichita KS 67202

11-28S-5W

Job Ticket: 13988

DST#: 1

ATTN: Terry McLeod

Test Start: 2001.03.12 @ 20:05:00

Mud and Cushion Information

Mud Type: Gel Chem

Cushion Type:

Oil APt: -999999 deg API

Mud Weight: 9.00 lb/gal

Cushion Length: ft

Water Salinity: 26500 ppm

Viscosity: 59.00 sec/qt

Cushion Volume: bbl

Water Loss: 11.13

Gas Cushion Type:

Resistivity: ohm.m

Gas Cushion Pressure: psig

Salinity: 8500.00 ppm

Filter Cake: inches

Recovery Information

Recovery Table

Length ft	Description	Volume bbl
0.00	3642 GIP	0.000
40.00	Slr Gas cut Mud 5%G 95%M	0.561
65.00	Gassy Mud cut Wtr w/scum of Oil 5%G 57	0.912

Total Length: 105.00 ft Total Volume: 1.470 bbl

Num Fluid Samples: 1

Num Gas Bombs: 1

Serial #: 3017

Laboratory Name: Caraway

Laboratory Location: Liberal KS

Recovery Comments: Rec. RW .49 at 37 F. 26,500 PPM.

RECEIVED

MAY 07 2002

KCC WICHITA



**TRILOBITE
TESTING, INC**

DRILL STEM TEST REPORT

GAS RATES

Lario Oil & Gas Co.

Bolinger "A" 1-11

301 S. Market
Wichita KS 67202

11-28S-5W

Job Ticket: 13988

DST#: 1

ATTN: Terry McLeod

Test Start: 2001.03.12 @ 20:05:00

Gas Rates Information

Temperature: 59 (deg F)

Relative Density: 0.65

Z Factor: 0.8

Gas Rates Table

Flow Period	Elapsed Time	Choke (inches)	Pressure (kPaa)	Gas Rate (Mcf/d)
2	10	0.13	1.00	5.76
2	10	0.13	1.00	5.76
2	10	0.13	1.00	5.76
2	20	0.13	1.00	5.76
2	30	0.13	2.00	6.14
2	40	0.13	3.00	6.51

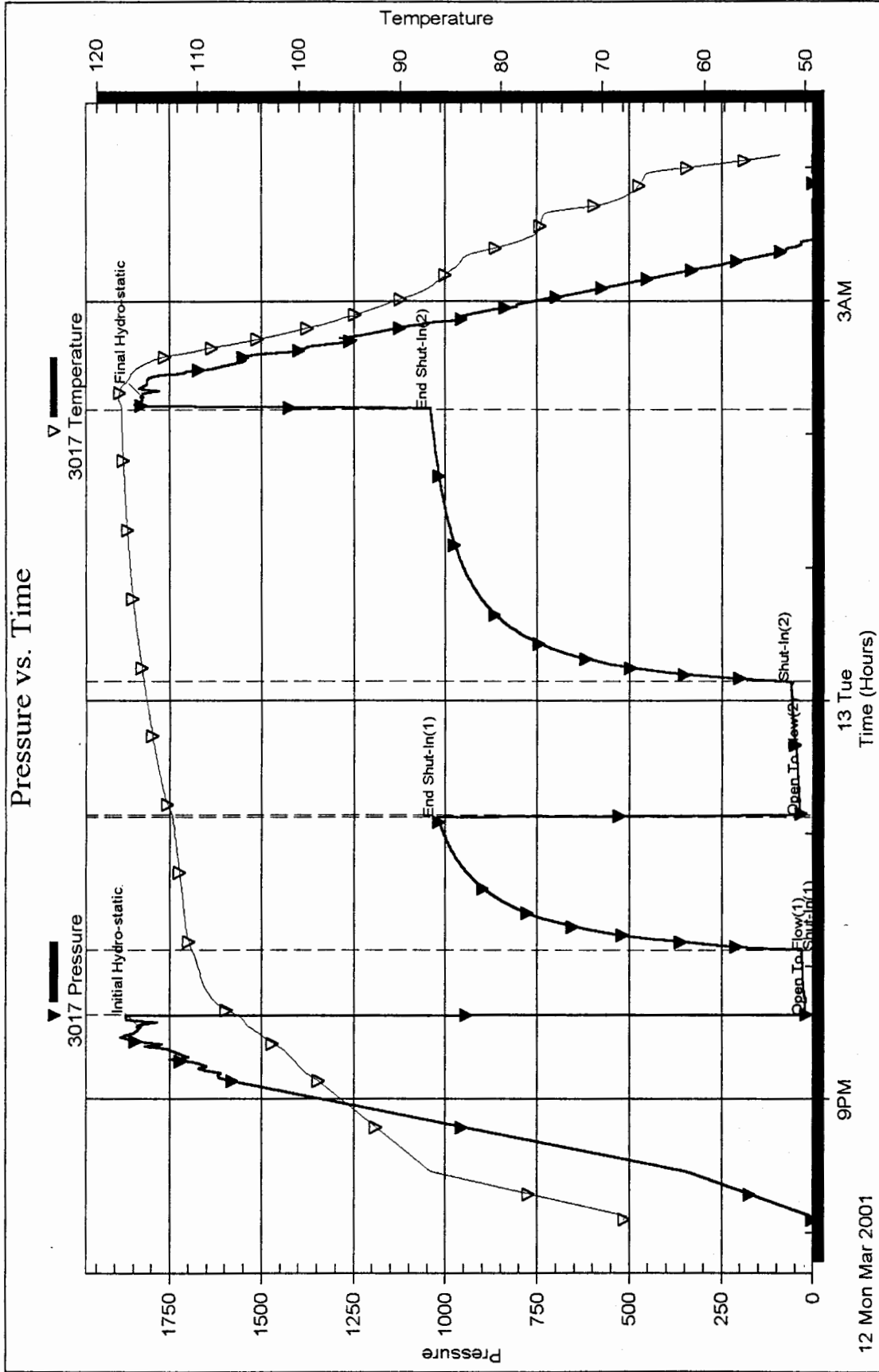
RECEIVED
MAY 07 2002
KCC WICHITA

Serial #: 3017

Inside Lario Oil & Gas Co.

11-28S-5W

Pressure vs. Time

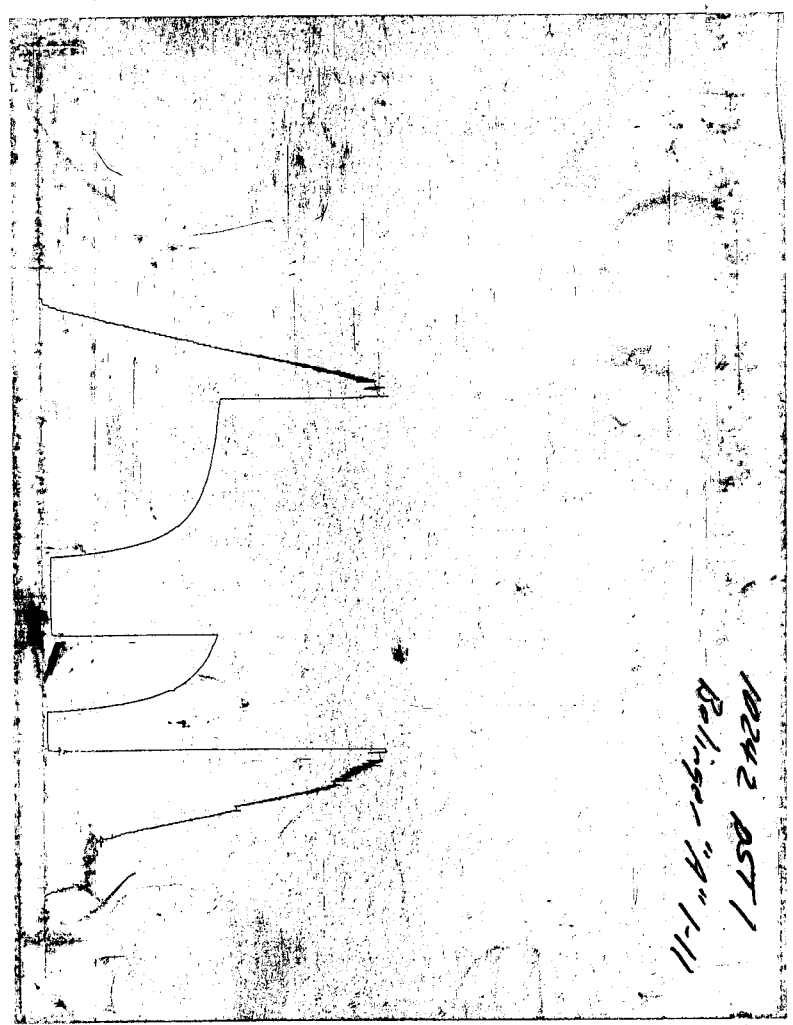


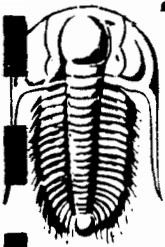
RECEIVED
MAY 07 2002
KCC WICHITA

RECEIVED
MAY 07 2002
KCC WICHITA

CHART PAGE

This is a photocopy of the actual AK-1 recorder chart





TRILOBITE TESTING L.L.C.

P.O. Box 362 • Hays, Kansas 67601 • (913) 625-4778

GAS VOLUME REPORT

Lacie Oko Co.
OPERATOR

Belinger "A" 1-11
WELL NAME AND NO.

1
DST NO.

GTS 2 min. into F.F.P.

<i>T.F.P.</i>				<i>F.F.P.</i>			
Mln.	Ins. of Water PSIG	Orifice Size	CF/D	Mln.	Ins. of Water (PSIG)	Orifice Size	CF/D
	<i>No</i>			<i>10</i>	<i>1</i>	<i>1/8"</i>	<i>5,400</i>
	<i>Gas</i>			<i>20</i>	<i>1</i>	<i>"</i>	<i>5,400</i>
				<i>30</i>	<i>2</i>	<i>"</i>	<i>5,800</i>
				<i>40</i>	<i>3</i>	<i>"</i>	<i>6,100</i>
				<i>50</i>	<i>5</i>	<i>"</i>	<i>6,800</i>
				<i>55</i>	<i>6</i>	<i>"</i>	<i>7,200</i>
				<i>60</i>	<i>Press. up Gas bottle</i>		

RECEIVED
MAY 07 2003
KCC WICHITA

Remarks: *Gas burned.*
1 sample to Caraway

TRILOBITE TESTING L.L.C.

P.O. Box 362 • Hays, Kansas 67601

N^o 13988

Test Ticket

Well Name & No. Balinger "A" 1-11 Test No. 1 Date 3-12-2001
 Company Loria Oil & Gas Co. Zone Tested Miss Chert
 Address Wichita KS 67202 Elevation 1394 KB 1386 GL
 Co. Rep / Geo. Terry McLeod Cont. Duke Rig 2 Est. Ft. of Pay 17 Por. 20 %
 Location: Sec. 11 Twp. 28.5 Rge. 5 W Co. Kingman State KS
 No. of Copies See Distribution Sheet (Y, N) Y Turnkey (Y, N) N Evaluation (Y, N) _____

Interval Tested 3761-3778 Initial Str Wt./Lbs. 48,000 Unseated Str Wt./Lbs. 49,000
 Anchor Length 17' Tool = 22 Wt. Set Lbs. 20,000 Wt. Pulled Loose/Lbs. 11,000
 Top Packer Depth 3756 Tool Weight 1,800
 Bottom Packer Depth 3761 Hole Size — 7 7/8" Rubber Size — 6 3/4"
 Total Depth 3778 Wt. Pipe Run — Drill Collar Run 0
 Mud Wt. 9.4 LCM 0 Vis. 59 WL 11.2 Drill Pipe Size 4 1/2 x.H. Ft. Run 3747 8'40"

Blow Description Strong OBB in 1 min. Conducted 2" slightly I.F.P.
~~Strong OBB in 1 min. Conducted 2" slightly I.F.P.~~
No blow-back. T.S.T.P.
Strong interval 675 in 2 min. "See Flow Chart" F.F.P.
No blow-back. F.S.T.P.

Recovery — Total Feet	GIP	Ft. in DC	Ft. in DP
<u>105</u>	<u>3642</u>	<u>0</u>	<u>105</u>
Rec. <u>40'</u> Feet Of <u>5 li. gas cut mud</u>	<u>5</u> %gas	%oil	%water <u>95</u> %mud
Rec. <u>65</u> Feet Of <u>heavy mud cut with 2</u>	<u>5</u> %gas	%oil	<u>57</u> %water <u>38</u> %mud
Rec. _____ Feet Of <u>w/sum of oil</u>	%gas	%oil	%water %mud
Rec. _____ Feet Of _____	%gas	%oil	%water %mud
Rec. _____ Feet Of _____	%gas	%oil	%water %mud

BHT 117 °F Gravity _____ °API D@ _____ °F Corrected Gravity _____ °API
 RW 0.49 @ 37 °F Chlorides 26,500 ppm Recovery Chlorides 8,500 ppm System

	AK-1	Alpine	Recorder No.	T-On Location
(A) Initial Hydrostatic Mud	<u>1867</u>	<u>1835</u>	<u>3017 "20:05"</u>	<u>18:30</u> <u>6:30 P.M.</u>
(B) First Initial Flow Pressure	<u>14</u>	<u>19</u>	(depth) <u>3766</u>	T-Started <u>8:05 P.M.</u>
(C) First Final Flow Pressure	<u>14</u>	<u>32</u>	Recorder No. <u>10242</u>	T-Open <u>9:40 P.M.</u> <u>9:40</u>
(D) Initial Shut-In Pressure	<u>996</u>	<u>1023</u>	(depth) <u>3775</u>	T-Pulled <u>2:10 A.M.</u>
(E) Second Initial Flow Pressure	<u>23</u>	<u>31</u>	Recorder No. _____	T-Out <u>4:10 A.M.</u>
(F) Second Final Flow Pressure	<u>23</u>	<u>58</u>	(depth) _____	T-Off Location _____
(G) Final Shut-in Pressure	<u>1011</u>	<u>1041</u>	Initial Opening <u>30</u>	Test <u>700</u> ✓
(Q) Final Hydrostatic Mud	<u>1862</u>	<u>1825</u>	Initial Shut-in <u>60</u>	Jars _____
			Final Flow <u>60</u>	Safety Joint <u>50</u> ✓
			Final Shut-in <u>120</u>	Straddle _____
				Circ. Sub/ _____
				Sampler _____
				Extra Packer _____
				Elec. Rec. <u>150</u> ✓
				Mileage <u>60</u> ✓
				Other <u>2 Hrs.</u>
				TOTAL PRICE \$ <u>4,020.00</u>

3/12/2005-017
 TRILOBITE TESTING L.L.C. SHALL NOT BE LIABLE FOR DAMAGE OF ANY KIND OF THE PROPERTY OR PERSONNEL OF THE ONE FOR WHOM A TEST IS MADE, OR FOR ANY LOSS SUFFERED OR SUSTAINED, DIRECTLY OR INDIRECTLY, THROUGH THE USE OF ITS EQUIPMENT, OR ITS STATEMENTS OR OPINION CONCERNING THE RESULTS OF ANY TEST. TOOLS LOST OR DAMAGED IN THE HOLE SHALL BE PAID FOR AT COST BY THE PARTY FOR WHOM THE TEST IS MADE.

Approved By Terry McLeod
 Our Representative Ernest S. Sabers

RECEIVED
 MAY 07 2002
 KCC WICHITA



**TRILOBITE
TESTING, INC**

RECEIVED
MAY 07 2001
KCC WICHITA

DRILL STEM TEST REPORT

Prepared For: **Lario Oil & Gas Co.**

301 S. Market
Wichita KS 67202

ATTN: Terry McLeod

11-28S-5W

Bolinger "A" 1-11

Start Date: 2001.03.13 @ 10:50:00

End Date: 2001.03.13 @ 16:40:00

Job Ticket #: 13989 DST #: 2

Trilobite Testing, Inc

PO Box 362 Hays, KS 67601

ph: 785-625-4778 fax: 785-625-5620



**TRILOBITE
TESTING, INC**

DRILL STEM TEST REPORT

Lario Oil & Gas Co.

301 S. Market
Wichita KS 67202

ATTN: Terry McLeod

Bolinger "A" 1-11

11-28S-5W

Job Ticket: 13989

DST#: 2

Test Start: 2001.03.13 @ 10:50:00

GENERAL INFORMATION:

Formation: **Miss. Dolomite**
Deviated: No Whipstock: ft (KB)
Time Tool Opened: 12:08:10
Time Test Ended: 16:40:00

RECEIVED

MAY 07 2001

KCC WICHITA

Test Type: Conventional Bottom Hole
Tester: Lanny Saloga
Unit No: 14

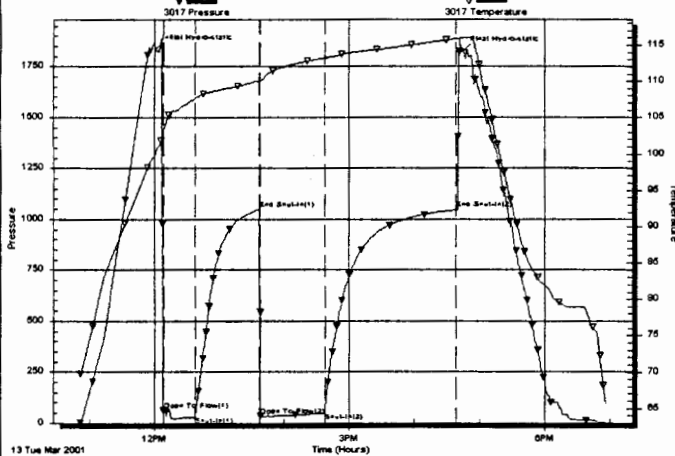
Interval: **3782.00 ft (KB) To 3795.00 ft (KB) (TVD)**
Total Depth: 3795.00 ft (KB)
Hole Diameter: 7.88 inches Hole Condition: Fair

Reference Elevations: 1394.00 ft (KB)
1386.00 ft (CF)
KB to GR/CF: 8.00 ft

Serial #: 3017 Inside
Press@RunDepth: 27.46 psig @ 3784.00 ft (KB) Capacity: 7000.00 psig
Start Date: 2001.03.13 End Date: 2001.03.13 Last Calib.: 2001.03.11
Start Time: 10:50:45 End Time: 18:56:09 Time On Btm: 2001.03.13 @ 12:01:10
Time Off Btm: 2001.03.13 @ 16:45:40

TEST COMMENT: Strong OBB in 90 sec. Cracked 2" slightly. I.F.P.
No blow-back. I.S.I.P.
Strong immed. GTS in 28 min. To weak to measure. F.F.P.
No blow-back. F.S.I.P. Gas burned. Rec. RW .54 at 56 F. 15,200 PPM. IF: Strong bob in 90sec.

Pressure vs. Time



PRESSURE SUMMARY

Time (Min.)	Pressure (psig)	Temp (deg F)	Annotation
71	1836.40	100.33	Initial Hydro-static
78	58.50	102.94	Open To Flow (1)
108	27.46	107.67	Shut-in(1)
167	1047.39	110.14	End Shut-in(1)
168	32.47	110.20	Open To Flow (2)
227	46.85	113.26	Shut-in(2)
348	1045.45	115.94	End Shut-in(2)
355	1828.55	116.06	Final Hydro-static

Recovery

Length (ft)	Description	Volume (bbl)
0.00	3704 Ft. GIP	0.00
75.00	Muddy Wtr cut Gassy Oil 25% 51%O14%W	1.05

Gas Rates

Choke (inches)	Pressure (psig)	Gas Rate (Mcf/d)



**TRILOBITE
TESTING, INC**

DRILL STEM TEST REPORT

TOOL DIAGRAM

Lario Oil & Gas Co.

Bolinger "A" 1-11

301 S. Market
Wichita KS 67202

11-28S-5W

Job Ticket: 13989

DST#: 2

ATTN: Terry McLeod

Test Start: 2001.03.13 @ 10:50:00

Tool Information

Drill Pipe:	Length: 3779.00 ft	Diameter: 3.80 inches	Volume: 53.01 bbl	Tool Weight: 1800.00 lb
Drill Collar:	Length: 0.00 ft	Diameter: 2.25 inches	Volume: 0.00 bbl	Weight set on Packer: 20000.00 lb
Heavy Wt. Pipe:	Length: 0.00 ft	Diameter: 0.00 inches	Volume: 0.00 bbl	Weight to Pull Loose: 6000.00 lb
Drill Pipe Above KB:	19.00 ft			Tool Chased ft
Depth to Top Packer:	3777.00 ft			String Weight: Initial 48000.00 lb
Depth to Bottom Packer:	ft			Final 49000.00 lb
Interval between Packers:	ft			
Tool Length:	35.00 ft			
Number of Packers:	2	Diameter: 6.75 inches		

Tool Comments

Strong OBB in 90 sec. Cracked 2" slightly. I.F.P.
No blow-back. I.S.I.P.

RECEIVED
MAY 07 2002
KCC WICHITA

Tool Description	Length (ft)	Serial No.	Position	Depth (ft)	Accum. Lengths
------------------	-------------	------------	----------	------------	----------------

C.O. Sub	1.00			3761.00	
S.I. Tool	5.00			3766.00	
HMV	5.00			3771.00	
Safety Joint	2.00			3773.00	
Packer	4.00			3777.00	17.00 Bottom Of Top Packer
Packer	5.00			3782.00	
Stubb	1.00			3783.00	
Perforations	1.00			3784.00	
Recorder	0.00	3017	Inside	3784.00	
Perforations	9.00			3793.00	
Recorder	0.00	10242	Inside	3793.00	
Bullnose	2.00			3795.00	18.00 Bottom Packers & Anchor

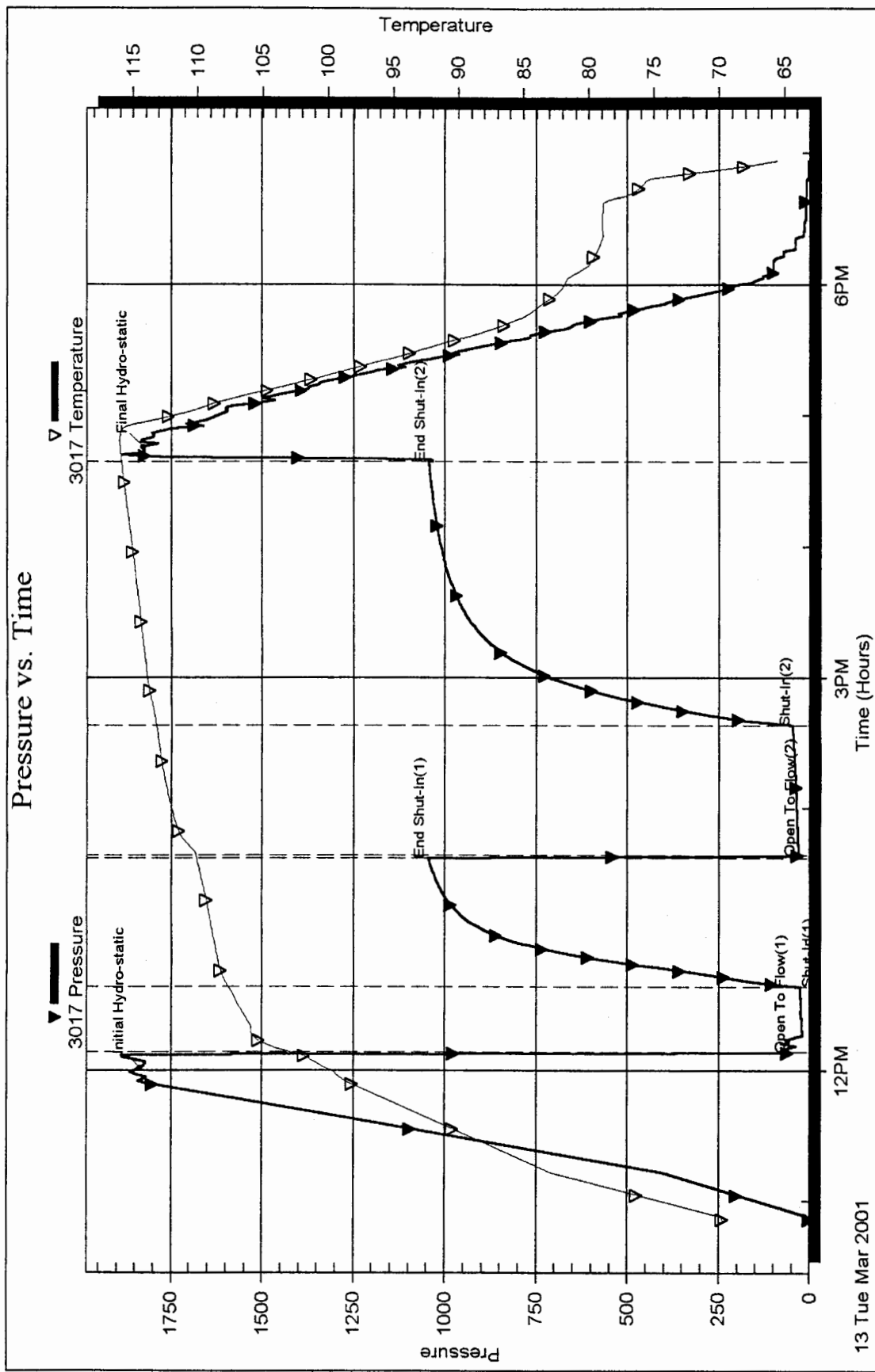
Total Tool Length: 35.00

Serial #: 3017

Inside Lario Oil & Gas Co.

11-28S-5W

Pressure vs. Time

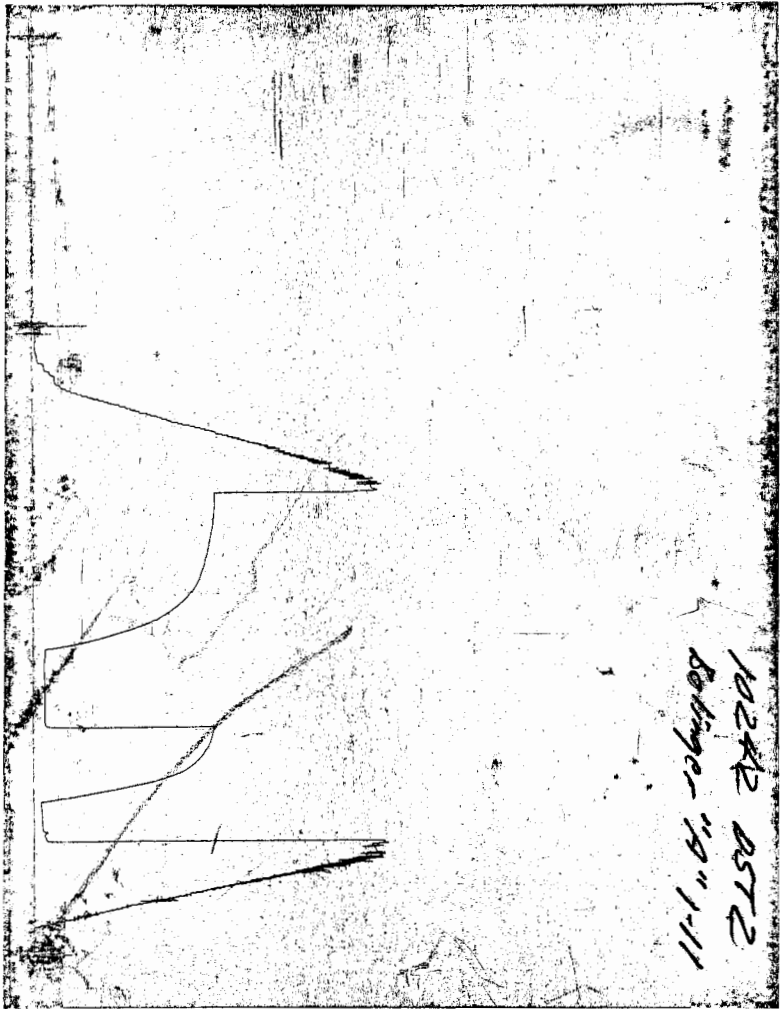


RECEIVED
MAY 07 2001
KCC WICHITA

RECEIVED
MAY 07 2002
KCC WICHITA

CHART PAGE

This is a photocopy of the actual AK-1 recorder chart



TRILOBITE TESTING L.L.C.

P.O. Box 362 • Hays, Kansas 67601

N^o 13989

Test Ticket

Well Name & No. <u>Baliage "A" 1-11</u>	Test No. <u>2</u>	Date <u>3-13-2001</u>
Company <u>Lacia Oil & Gas Co.</u>	Zone Tested <u>Miss. Dolomite</u>	
Address <u>Wichita KS 67202</u>	Elevation <u>1394</u> KB <u>1386</u> GL	
Co. Rep / Geo. <u>Terry McLeod</u>	Cont. <u>Duke Rig 2</u>	Est. Ft. of Pay <u>8</u> Por. <u>20</u> %
Location: Sec. <u>11</u>	Twp. <u>28.5</u>	Rge. <u>5 W</u> Co. <u>Kingman</u> State <u>Ks.</u>
No. of Copies <u>See</u> Distribution Sheet (Y, N) <u>Y</u>	Turnkey (Y, N) <u>N</u>	Evaluation (Y, N) _____

Interval Tested <u>3782 - 3795</u>	Initial Str Wt./Lbs. <u>48,000</u>	Unseated Str Wt./Lbs. <u>49,000</u>
Anchor Length <u>13'</u> <u>Total = 22'</u>	Wt. Set Lbs. <u>20,000</u>	Wt. Pulled Loose/Lbs. <u>6,000</u>
Top Packer Depth <u>3777</u>	Tool Weight <u>4,800</u>	
Bottom Packer Depth <u>3782</u>	Hole Size — <u>7 7/8"</u>	Rubber Size — <u>6 3/4"</u>
Total Depth <u>3795</u>	Wt. Pipe Run _____	Drill Collar Run <u>0</u>
Mud Wt. <u>9.4</u> LCM <u>0</u> Vis. <u>54</u> WL <u>9.8</u>	Drill Pipe Size <u>4 1/2 xH</u>	Ft. Run <u>3779</u> <u>19' up</u>

Blow Description Strong OBB in 90 sec. Cracked 2" slightly. T.F.P.
No blow-back. F.S.T.P.
Strong in mud. GTS in 28 min. To weak to measure. F.F.P.
No blow-back F.S.T.P.

Recovery — Total Feet <u>75</u>	GIP <u>3704</u>	Ft. in DC <u>0</u>	Ft. in DP <u>75</u>		
Rec. <u>75</u>	Feet Of <u>Muddy with cut lassy Oil 25% gas 51% oil 14% water 10% mud</u>	%gas	%oil	%water	%mud
Rec. _____	Feet Of _____	%gas	%oil	%water	%mud
Rec. _____	Feet Of _____	%gas	%oil	%water	%mud
Rec. _____	Feet Of _____	%gas	%oil	%water	%mud
Rec. _____	Feet Of _____	%gas	%oil	%water	%mud
BHT <u>115</u> °F Gravity _____	°API D@ _____	°F Corrected Gravity _____	°API _____		
RW <u>0.54</u> @ <u>56</u> °F	Chlorides <u>15,200</u> ppm	Recovery _____	Chlorides <u>8,500</u> ppm	System _____	

	AK-1	Alpine	PSI	Recorder No.	T-On Location
(A) Initial Hydrostatic Mud	<u>1892</u>	<u>1836</u>		<u>3017 "10:50"</u>	<u>9:15 A.M.</u>
(B) First Initial Flow Pressure	<u>25</u>	<u>58</u>		<u>3784</u>	<u>10:50 A.M.</u>
(C) First Final Flow Pressure	<u>25</u>	<u>27</u>		<u>10242</u>	<u>12:10 P.M. 9:45</u>
(D) Initial Shut-In Pressure	<u>1021</u>	<u>1047</u>		<u>3792</u>	<u>4:40 P.M.</u>
(E) Second Initial Flow Pressure	<u>53</u>	<u>32</u>		_____	<u>2:00 P.M.</u>
(F) Second Final Flow Pressure	<u>53</u>	<u>46</u>		_____	T-Off Location _____
(G) Final Shut-in Pressure	<u>1030</u>	<u>1045</u>		<u>30</u>	Test <u>700</u> ✓
(Q) Final Hydrostatic Mud	<u>1879</u>	<u>1828</u>		<u>60</u>	Jars _____

31311050.017

TRILOBITE TESTING L.L.C. SHALL NOT BE LIABLE FOR DAMAGE OF ANY KIND OF THE PROPERTY OR PERSONNEL OF THE ONE FOR WHOM A TEST IS MADE, OR FOR ANY LOSS SUFFERED OR SUSTAINED, DIRECTLY OR INDIRECTLY, THROUGH THE USE OF ITS EQUIPMENT, OR ITS STATEMENTS OR OPINION CONCERNING THE RESULTS OF ANY TEST. TOOLS LOST OR DAMAGED IN THE HOLE SHALL BE PAID FOR AT COST BY THE PARTY FOR WHOM THE TEST IS MADE.

Approved By Terry S. McLeod
Our Representative Terry S. McLeod

RECEIVED
MAY 07 2001
KCC WICHITA

Sampler _____
Extra Packer _____
Elec. Rec. 150 ✓
Mileage 60 ✓
Other 2 hrs ✓
TOTAL PRICE \$ 1,020.00



**TRILOBITE
TESTING, INC**

DRILL STEM TEST REPORT

Prepared For: **Lario Oil & Gas Co.**
301 S. Market
Wichita KS 67202

ATTN: Terry McLeod

11-28S-5W

Bolinger "A" 1-11

Start Date: 2001.03.14 @ 02:00:00

End Date: 2001.03.14 @ 07:50:00

Job Ticket #: 13990 DST #: 3

Trilobite Testing, Inc
PO Box 362 Hays, KS 67601
ph: 785-625-4778 fax: 785-625-5620

RECEIVED
MAY 07 2001
KCC WICHITA

Lario Oil & Gas Co.

Bolinger "A" 1-11

11-28S-5W

DST #: 3

Mississippi Dolomite

2001.03.14



**TRILOBITE
TESTING, INC**

DRILL STEM TEST REPORT

Lario Oil & Gas Co.

Bolinger "A" 1-11

301 S. Market
Wichita KS 67202

11-28S-5W

Job Ticket: 13990

DST#: 3

ATTN: Terry McLeod

Test Start: 2001.03.14 @ 02:00:00

GENERAL INFORMATION:

Formation: **Mississippi Dolomite**
 Deviated: No Whipstock: ft (KB)
 Time Tool Opened: 03:19:05
 Time Test Ended: 07:50:00

RECEIVED

Test Type: Conventional Bottom Hole

Tester: Lanny Saloga

Unit No: 14

MAY 07 2001

Interval: **3804.00 ft (KB) To 3830.00 ft (KB) (TVD)**
 Total Depth: 3830.00 ft (KB)
 Hole Diameter: 7.88 inches Hole Condition: Poor

KCC WICHITA

Reference Elevations: 1394.00 ft (KB)

1386.00 ft (CF)

KB to GR/CF: 8.00 ft

Serial #: **3017** Inside
 Press@RunDepth: 75.69 psig @ 3806.00 ft (KB)
 Start Date: 2001.03.14 End Date: 2001.03.14
 Start Time: 02:00:10 End Time: 09:56:34

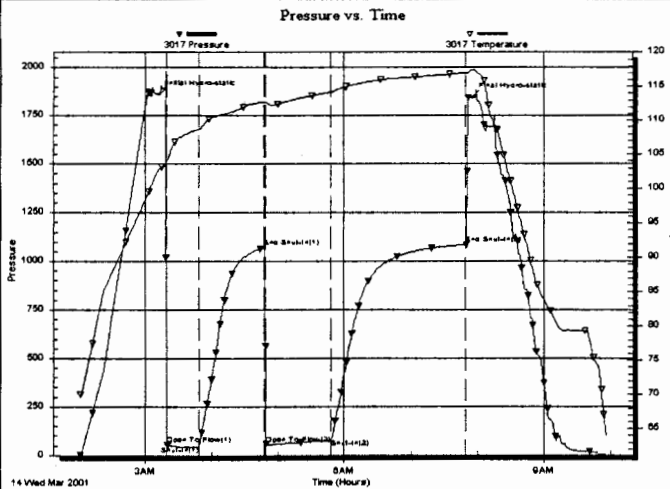
Capacity: 7000.00 psig

Last Calib.: 2001.03.14

Time On Btm: 2001.03.14 @ 03:12:20

Time Off Btm: 2001.03.14 @ 07:55:20

TEST COMMENT: Slid tool 7'. 3" blow to strong OBB in 3 min. Cracked 2". I.F.P.
 No blow-back. I.S.I.P.
 Strong immed. GTS in 32 min. See flow chart. Gas burned. F.F.P.
 No blow-back. F.S.I.P. IF: Slid tool 7'. 3" to strong bob in 3 min



PRESSURE SUMMARY

Time (Min.)	Pressure (psig)	Temp (deg F)	Annotation
73	1861.20	102.84	Initial Hydro-static
79	55.30	104.03	Open To Flow (1)
109	43.56	108.69	Shut-In(1)
168	1069.20	112.73	End Shut-In(1)
170	55.46	112.72	Open To Flow (2)
229	75.69	114.22	Shut-In(2)
350	1084.70	117.00	End Shut-In(2)
356	1843.11	117.43	Final Hydro-static

Recovery

Length (ft)	Description	Volume (bbl)
0.00	3624 Ft. GIP	0.00
65.00	Gassy HOCM 18%G 35%O 47%M	0.91
120.00	Gassy Oil 50%G 42%O 4%W 4%M	1.68

Gas Rates

	Choke (inches)	Pressure (psig)	Gas Rate (Mcf/d)
First Gas Rate	0.13	2.00	6.14
Last Gas Rate	0.13	2.00	6.14
Max. Gas Rate	0.13	2.00	6.14



**TRILOBITE
TESTING, INC**

DRILL STEM TEST REPORT

TOOL DIAGRAM

Lario Oil & Gas Co.

Bolinger "A" 1-11

301 S. Market
Wichita KS 67202

11-28S-5W

Job Ticket: 13990

DST#: 3

ATTN: Terry McLeod

Test Start: 2001.03.14 @ 02:00:00

Tool Information

Drill Pipe:	Length: 3809.00 ft	Diameter: 3.80 inches	Volume: 53.43 bbl	Tool Weight: 1800.00 lb
Drill Collar:	Length: 0.00 ft	Diameter: 2.25 inches	Volume: 0.00 bbl	Weight set on Packer: 20000.00 lb
Heavy Wt. Pipe:	Length: 0.00 ft	Diameter: 0.00 inches	Volume: 0.00 bbl	Weight to Pull Loose: 16000.00 lb
Drill Pipe Above KB:	27.00 ft			Tool Chased ft
Depth to Top Packer:	3799.00 ft			String Weight: Initial 48000.00 lb
Depth to Bottom Packer:	ft			Final 49000.00 lb
Interval between Packers:	ft			
Tool Length:	48.00 ft			
Number of Packers:	2	Diameter: 6.75 inches		

Tool Comments

Slid tool 7 ft. 3" blow to strong OBB in 3 min. Cracked 2". I.F.P.
No blow -back. I.S.I.P.

RECEIVED
MAY 07 2001
KCC WICHITA

Tool Description	Length (ft)	Serial No.	Position	Depth (ft)	Accum. Lengths
C.O. Sub	1.00			3783.00	
S.I. Tool	5.00			3788.00	
HMV	5.00			3793.00	
Safety Joint	2.00			3795.00	
Packer	4.00			3799.00	17.00 Bottom Of Top Packer
Packer	5.00			3804.00	
Stubb	1.00			3805.00	
Perforations	1.00			3806.00	
Recorder	0.00	3017	Inside	3806.00	
Perforations	22.00			3828.00	
Recorder	0.00	10242	Inside	3828.00	
Bullnose	2.00			3830.00	31.00 Bottom Packers & Anchor

Total Tool Length: 48.00



**TRILOBITE
TESTING, INC**

DRILL STEM TEST REPORT

FLUID SUMMARY

Lario Oil & Gas Co.

Bolinger "A" 1-11

301 S. Market
Wichita KS 67202

11-28S-5W

Job Ticket: 13990

DST#: 3

ATTN: Terry McLeod

Test Start: 2001.03.14 @ 02:00:00

Mud and Cushion Information

Mud Type: Gel Chem

Cushion Type:

Oil API: -999999 deg API

Mud Weight: 9.00 lb/gal

Cushion Length: ft

Water Salinity: - ppm

Viscosity: 49.00 sec/qt

Cushion Volume: bbl

214748364

Water Loss: 9.76

Gas Cushion Type:

Resistivity: ohm.m

Gas Cushion Pressure: psig

Salinity: 8500.00 ppm

Filter Cake: inches

Recovery Information

Recovery Table

Length ft	Description	Volume bbl
0.00	3624 Ft. GIP	0.000
65.00	Gassy HOCM 18%G 35%O 47%M	0.912
120.00	Gassy Oil 50%G 42%O 4%W 4%M	1.683

Total Length: 185.00 ft Total Volume: 2.590 bbl

Num Fluid Samples: 1

Num Gas Bombs: 3

Serial #: 3017

Laboratory Name: Caraway

Laboratory Location: Liberal KS

Recovery Comments:

RECEIVED
MAY 07 2001
KCC WICHITA



**TRILOBITE
TESTING, INC**

DRILL STEM TEST REPORT

GAS RATES

Lario Oil & Gas Co.

Bolinger "A" 1-11

301 S. Market
Wichita KS 67202

11-28S-5W

Job Ticket: 13990

DST#: 3

ATTN: Terry McLeod

Test Start: 2001.03.14 @ 02:00:00

Gas Rates Information

Temperature: 59 (deg F)

Relative Density: 0.65

Z Factor: 0.8

Gas Rates Table

Flow Period	Elapsed Time	Choke (inches)	Pressure (kPaa)	Gas Rate (Mcf/d)
2	40	0.13	2.00	6.14
2	40	0.13	2.00	6.14
2	40	0.13	2.00	6.14

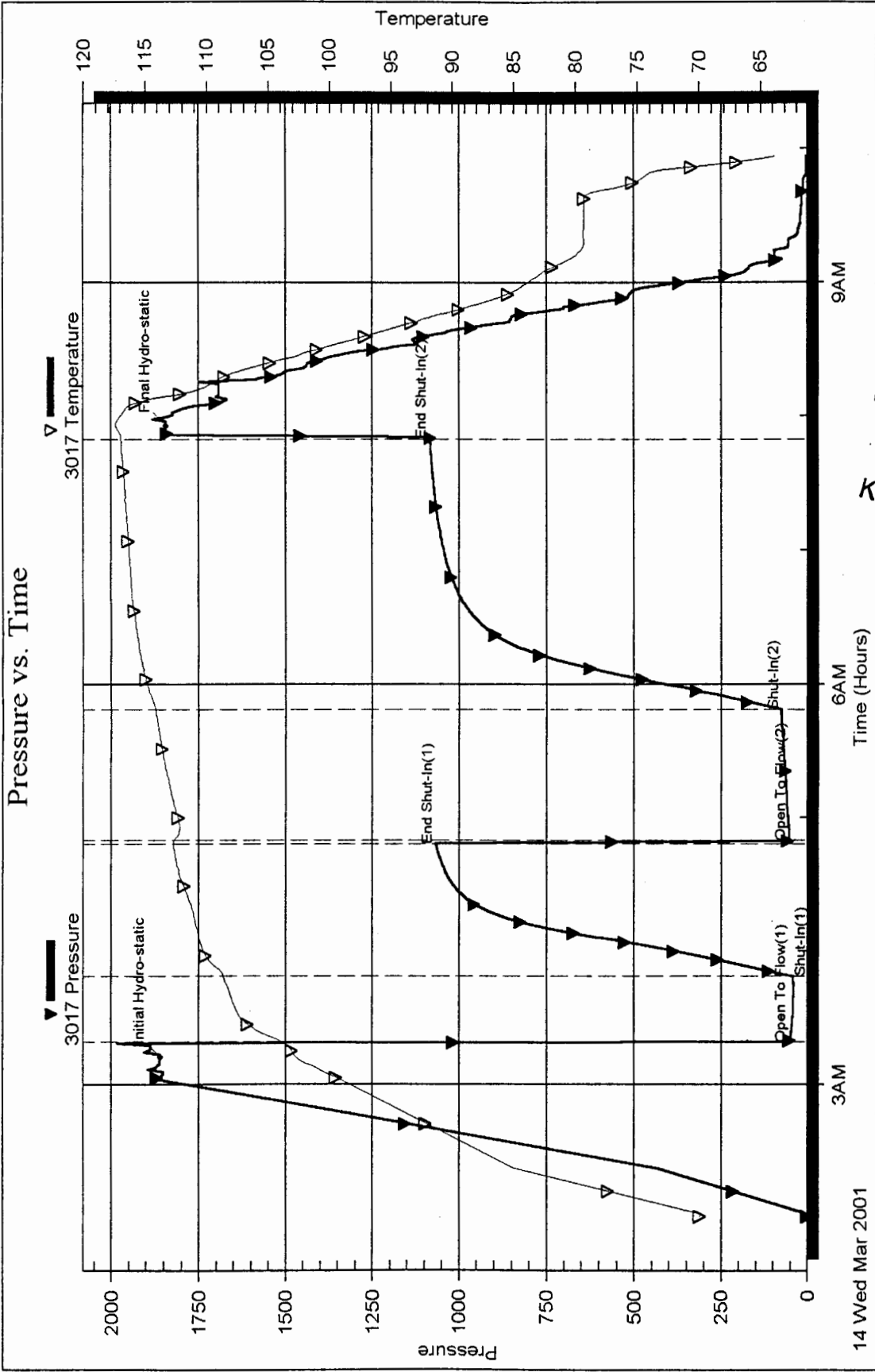
RECEIVED
MAY 07 2001
KCC WICHITA

Serial #: 3017

Inside Lario Oil & Gas Co.

11-28S-5W

Pressure vs. Time

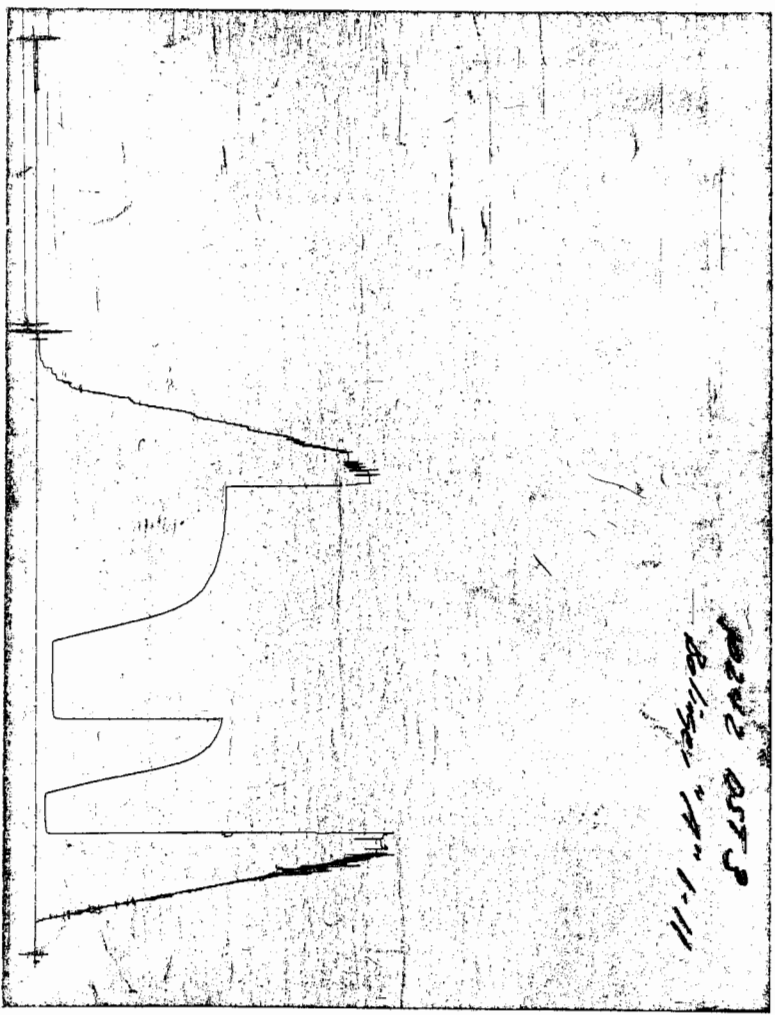


RECEIVED
MAY 07 2001
KCC WICHITA

RECEIVED
MAY 07 2002
KCC WICHITA

CHART PAGE

This is a photocopy of the actual AK-1 recorder chart



TRILOBITE TESTING L.L.C.

P.O. Box 362 • Hays, Kansas 67601

N^o 13990

Test Ticket

Well Name & No. <u>Bolinger "A" 1-11</u>	Test No. <u>3</u>	Date <u>3-14-2001</u>
Company <u>Loria Oil & Gas Co.</u>	Zone Tested <u>Miss. Dolomite</u>	
Address <u>Wichita KS 67202</u>	Elevation <u>1394</u> KB <u>1386</u> GL	
Co. Rep / Geo. <u>Terry McLead</u>	Cont. <u>Duke Rig 2</u>	Est. Ft. of Pay <u>14</u> Por. <u>12</u> %
Location: Sec. <u>11</u> Twp. <u>28.5</u> Rge. <u>5 W</u>	Co. <u>Kingman</u> State <u>Ks.</u>	
No. of Copies <u>See</u> Distribution Sheet (Y, N) <u>Y</u>	Turnkey (Y, N) <u>N</u>	Evaluation (Y, N) <u></u>

Interval Tested <u>3804-3830</u>	Initial Str Wt./Lbs. <u>48,000</u>	Unseated Str Wt./Lbs. <u>49,000</u>
Anchor Length <u>26'</u> Tool = <u>22'</u>	Wt. Set Lbs. <u>20,000</u>	Wt. Pulled Loose/Lbs. <u>16,000</u>
Top Packer Depth <u>3799</u>	Tool Weight <u>1,800</u>	
Bottom Packer Depth <u>3804</u>	Hole Size — <u>7 7/8"</u>	Rubber Size — <u>6 3/4"</u>
Total Depth <u>3830</u>	Wt. Pipe Run <u>—</u>	Drill Collar Run <u>0</u>
Mud Wt. <u>9.4</u> LCM <u>0</u> Vis. <u>49</u> WL <u>9.8</u>	Drill Pipe Size <u>4 1/2 XH</u>	Ft. Run <u>3809</u> <u>27' up</u>

Blow Description slid tool 7 ft. 3" to string OBB in 3 min. Cracked 2". I.F.P.
No blow-back. I.S.T.P.
Strong inward. GTS in 32 min. See Flow Chart. F.F.P.
No blow-back. F.S.T.P.

Recovery — Total Feet <u>185</u>	GIP <u>3624</u>	Ft. in DC <u>0</u>	Ft. in DP <u>185</u>
Rec. <u>65</u> Feet Of <u>mud cut heavy oil</u>	<u>18</u> %gas	<u>35</u> %oil	<u>47</u> %water
Rec. <u>120</u> Feet Of <u>Gassey oil</u>	<u>50</u> %gas	<u>42</u> %oil	<u>4</u> %water
Rec. <u>—</u> Feet Of <u>—</u>	<u>—</u> %gas	<u>—</u> %oil	<u>—</u> %water
Rec. <u>—</u> Feet Of <u>—</u>	<u>—</u> %gas	<u>—</u> %oil	<u>—</u> %water
Rec. <u>—</u> Feet Of <u>—</u>	<u>—</u> %gas	<u>—</u> %oil	<u>—</u> %water
BHT <u>117</u> °F Gravity <u>—</u>	°API D@ <u>—</u>	°F Corrected Gravity <u>—</u>	°API <u>—</u>
RW <u>—</u> @ <u>—</u> °F Chlorides <u>—</u>	ppm Recovery <u>—</u>	Chlorides <u>8,500</u>	ppm System <u>—</u>

	AK-1	Alpine	PSI	Recorder No.	T-On Location
(A) Initial Hydrostatic Mud	<u>1935</u>	<u>1861</u>		<u>3017 2:00</u>	<u>60:45</u> <u>12:45 AM</u>
(B) First Initial Flow Pressure	<u>44</u>	<u>55</u>		(depth) <u>3806</u>	T-Started <u>2:00 AM</u>
(C) First Final Flow Pressure	<u>44</u>	<u>43</u>		Recorder No. <u>10242</u>	T-Open <u>3:20 AM</u>
(D) Initial Shut-In Pressure	<u>1066</u>	<u>1067</u>		(depth) <u>3827</u>	T-Pulled <u>7:50 AM</u>
(E) Second Initial Flow Pressure	<u>86</u>	<u>55</u>		Recorder No. <u>—</u>	T-Out <u>9:45 AM</u>
(F) Second Final Flow Pressure	<u>86</u>	<u>75</u>		(depth) <u>—</u>	T-Off Location <u>—</u>
(G) Final Shut-in Pressure	<u>1083</u>	<u>1084</u>		Initial Opening <u>30</u>	Test <u>700</u> ✓
(Q) Final Hydrostatic Mud	<u>1875</u>	<u>1843</u>		Initial Shut-in <u>60</u>	Jars <u>—</u>
				Final Flow <u>60</u>	Safety Joint <u>50</u> ✓
				Final Shut-in <u>120</u>	Straddle <u>—</u>

31410200.017
 TRILOBITE TESTING L.L.C. SHALL NOT BE LIABLE FOR DAMAGE OF ANY KIND OF THE PROPERTY OR PERSONNEL OF THE ONE FOR WHOM A TEST IS MADE, OR FOR ANY LOSS SUFFERED OR SUSTAINED, DIRECTLY OR INDIRECTLY, THROUGH THE USE OF ITS EQUIPMENT, OR ITS STATEMENTS OR OPINION CONCERNING THE RESULTS OF ANY TEST. TOOLS LOST OR DAMAGED IN THE HOLE SHALL BE PAID FOR AT COST BY THE PARTY FOR WHOM THE TEST IS MADE.

Approved By Terry A. McLead

Our Representative Terry A. McLead

RECEIVED
 MAY 07 2001
 KCC WICHITA

Extra Packer —
 Elec. Rec. 150
 Mileage 60
 Other 12 hrs. 35
 TOTAL PRICE \$ 1020.00
990