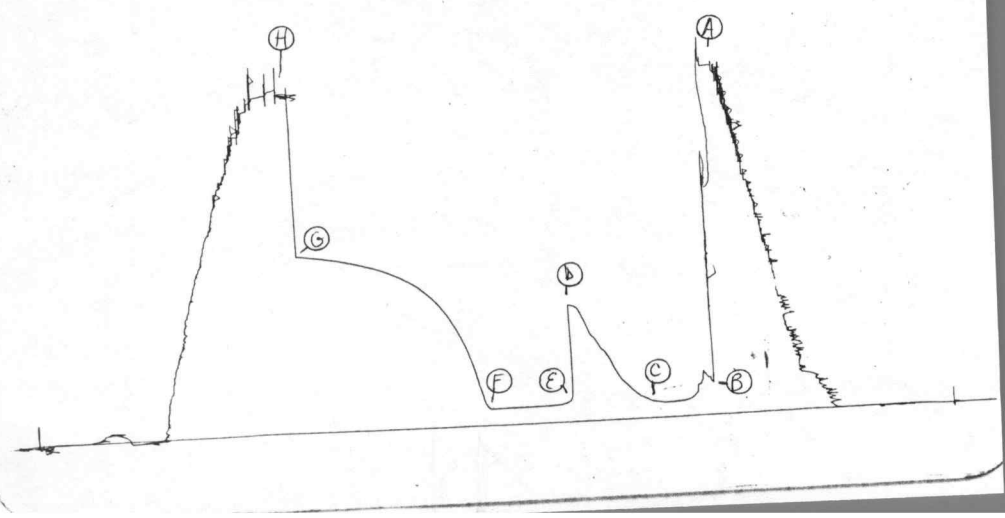


TKT # 8121  
I



TO: K.R.M. PETROLEUM CORPORATION  
817 - 17th Street  
Guaranty Bank Building  
Denver, Colorado 80202

FROM: WESTERN TESTING COMPANY, INC.  
Post Office Box 1599  
Wichita, Kansas 67202

DATE: May 14, 1981

SUBJECT: Copies of drill stem test mailed to interest owners:  
DRILL STEM TEST NUMBER: Test #1

WELL NAME AND NUMBER : Kastner #1-30  
COUNTY: Kingman County, Kansas

COPIES MAILED TO :

K. R. M. Petroleum Corporation  
817 17th Street  
Guaranty Bank Building  
Denver, Colorado 80202  
(Three copies + Invoice)

Joseph Thomas  
Post Office Box 4  
Senton, Texas 78377  
(One copy)

Maurice L. Brown  
200 Sutton Place  
Wichita, Kansas 67202  
(Two copies )

Noel LaJeune  
2970 Security LifeBldg.  
Denver, Colorado 80202  
(One copy)

Lloyd Jones  
Jones Oil Service  
P.O. Box 816  
Perryton, Texas 79070  
(One copy)

Antares Oil Corporation  
1667 Cole Blvd., Suite 210  
Golden, Colorado 80401  
(One copy)

Wilmonth Interests  
P.O. Box 203  
Marion Center, Penn.15759  
(One copy)

Landon Curry  
425 Guaranty Bank  
Corpus Christi, Texas 78475  
(One copy)

Company K. R. M. Petroleum Corporation Lease & Well No. Kastner #1-30  
 Elevation 1432 Kelly Bushing Mississippi Effective Pay - Ft. Ticket No. 8121  
 Date 5/14/81 Sec. 30 Twp. 28S Range 5W County Kingman State Kansas  
 Test Approved by J. Copeland Landes Western Representative Kenny Kirkendall

Formation Test No. 1 Interval Tested from 3867 ft. to 3892 ft. Total Depth 3892 ft.  
 Packer Depth 3867 ft. Size 6 3/4 in. Packer Depth - ft. Size - in.  
 Packer Depth 3861 ft. Size 6 3/4 in. Packer Depth - ft. Size - in.  
 Depth of Selective Zone Set -

Top Recorder Depth (Inside) 3872 ft. Recorder Number 2605 Cap. 4150  
 Bottom Recorder Depth (Outside) 3877 ft. Recorder Number 10266 Cap. 4650  
 Below Straddle Recorder Depth - ft. Recorder Number - Cap. -

Drilling Contractor Rain & Williamson Drlg. Rig #3 Drill Collar Length 390 I. D. - in.  
 Mud Type drispac Viscosity 41 Weight Pipe Length - I. D. - in.  
 Weight 9.4 Water Loss 10 cc. Drill Pipe Length 3452 I. D. - in.  
 Chlorides 15,000 P.P.M. Test Tool Length 25 ft. Tool Size 5 1/2 in.  
 Jars: Make WTC Serial Number 414 Anchor Length 25 ft. Size 5 1/2 in.  
 Did Well Flow? No Reversed Out No Surface Choke Size 3/4 in. Bottom Choke Size 3/4 in.  
 Main Hole Size 7 7/8 in. Tool Joint Size 4 1/2 XH in.

Blow: Weak to fair blow increasing to good initial flow period; fair blow throughout final flow period.

Recovered 140 ft. of gas cut drilling mud oil spots on top of tool  
 Recovered - ft. of -  
 Recovered - ft. of -  
 Recovered - ft. of -  
 Recovered - ft. of -

Remarks: -

Time Set Packer(s) 10:30 ~~A.M.~~ P.M. Time Started Off Bottom - ~~A.M.~~ P.M. Maximum Temperature 128°  
 Initial Hydrostatic Pressure (A) 1870 P.S.I.  
 Initial Flow Period Minutes 45 (B) 159 P.S.I. to (C) 84 P.S.I.  
 Initial Closed In Period Minutes 60 (D) 624 P.S.I.  
 Final Flow Period Minutes 60 (E) 106 P.S.I. to (F) 87 P.S.I.  
 Final Closed In Period Minutes 138 (G) 951 P.S.I.  
 Final Hydrostatic Pressure (H) 1839 P.S.I.

**WESTERN TESTING CO., INC.**

**Pressure Data**

Date 5/14/81 Test Ticket No. 8121  
 Recorder No. 2605 Capacity 4150 Location 3872 Ft.  
 Clock No. - Elevation 1432 Kelly Bushing Well Temperature 128 °F

Point	Pressure	P.S.I.		Time Given	Time Computed
				Mins.	Mins.
A Initial Hydrostatic Mud	1870	P.S.I.	Open Tool	10:30P	M
B First Initial Flow Pressure	159	P.S.I.	First Flow Pressure	30	45
C First Final Flow Pressure	84	P.S.I.	Initial Closed-in Pressure	60	60
D Initial Closed-in Pressure	624	P.S.I.	Second Flow Pressure	--	60
E Second Initial Flow Pressure	106	P.S.I.	Final Closed-in Pressure	--	138
F Second Final Flow Pressure	87	P.S.I.			
G Final Closed-in Pressure	951	P.S.I.			
H Final Hydrostatic Mud	1839	P.S.I.			

PAGE ONE OF THREE

**PRESSURE BREAKDOWN**

First Flow Pressure		Initial Shut-In		Second Flow Pressure		Final Shut-In	
Breakdown: <u>9</u> Inc.		Breakdown: <u>20</u> Inc.		Breakdown: <u>12</u> Inc.		Breakdown: <u>46</u> Inc.	
of <u>5</u> mins. and a		of <u>3</u> mins. and a		of <u>5</u> mins. and a		of <u>3</u> mins. and a	
final inc. of <u>0</u> Min.		final inc. of <u>0</u> Min.		final inc. of <u>0</u> Min.		final inc. of <u>0</u> Min.	
Point Mins.	Press.	Point Minutes	Press.	Point Minutes	Press.	Point Minutes	Press.
P 1 0	159	0	84	0	106	0	87
P 2 5	212	3	93	5	95	3	106
P 3 10	165	6	106	10	89	6	180
P 4 15	99	9	116	15	87	9	263
P 5 20	84	12	135	20	87	12	337
P 6 25	79	15	154	25	87	15	400
P 7 30	76	18	176	30	87	18	455
P 8 35	76	21	197	35	87	21	500
P 9 40	80	24	222	40	87	24	539
P10 45	84	27	260	45	87	27	577
P11		30	305	50	87	30	612
P12		33	349	55	87	33	641
P13		36	375	60	87	36	668
P14		39	407			39	688
P15		42	443			42	709
P16		45	468			45	730
P17		48	525			48	750
P18		51	570			51	767
P19		54	609			54	780
P20		57	620			57	794
		60	624			60	804

WESTERN TESTING CO., INC.

Pressure Data

Date 5/14/81 Test Ticket No. 8121  
 Recorder No. 2605 Capacity 4150 Location 3872 Ft.  
 Clock No. - Elevation 1432 Kelly Bushing Well Temperature 128 °F

Point	Pressure		Time Given	Time Computed
A Initial Hydrostatic Mud	1870	P.S.I.	10:30P	M
B First Initial Flow Pressure	159	P.S.I.	30	Mins. 45
C First Final Flow Pressure	84	P.S.I.	60	Mins. 60
D Initial Closed-in Pressure	624	P.S.I.	--	Mins. 60
E Second Initial Flow Pressure	106	P.S.I.	--	Mins. 138
F Second Final Flow Pressure	87	P.S.I.		
G Final Closed-in Pressure	951	P.S.I.		
H Final Hydrostatic Mud	1839	P.S.I.		

PRESSURE BREAKDOWN PAGE TWO OF THREE

First Flow Pressure  
 Breakdown: 9 Inc.  
 of 5 mins. and a  
 final inc. of 0 Min.

Initial Shut-In  
 Breakdown: 20 Inc.  
 of 3 mins. and a  
 final inc. of 0 Min.

Second Flow Pressure  
 Breakdown: 12 Inc.  
 of 5 mins. and a  
 final inc. of 0 Min.

Final Shut-In  
 Breakdown: 46 Inc.  
 of 3 mins. and a  
 final inc. of 0 Min.

Point Mins.	Press.	Point Minutes	Press.	Point Minutes	Press.	Point Minutes	Press.
P 1				63	816		
P 2				66	827		
P 3				69	836		
P 4				72	846		
P 5				75	856		
P 6				78	864		
P 7				81	871		
P 8				84	875		
P 9				87	881		
P10				90	888		
P11				93	896		
P12				96	900		
P13				99	905		
P14				102	911		
P15				105	915		
P16				108	921		
P17				111	923		
P18				114	927		
P19				117	931		
P20				120	936		
				123	939		

WESTERN TESTING CO., INC.

Pressure Data

8121

Date 5/14/81

Test Ticket No. 3872

Recorder No. 2605

Capacity 4150

Location 128 Ft.

Clock No. -

Elevation 1432 Kelly Bushing

Well Temperature - °F

Point	Pressure		Time Given	Time Computed
A Initial Hydrostatic Mud	<u>1870</u>	P.S.I.	<u>10:30P</u>	<u>M</u>
B First Initial Flow Pressure	<u>159</u>	P.S.I.	<u>30</u>	<u>45</u> Mins.
C First Final Flow Pressure	<u>84</u>	P.S.I.	<u>60</u>	<u>60</u> Mins.
D Initial Closed-in Pressure	<u>624</u>	P.S.I.	<u>--</u>	<u>60</u> Mins.
E Second Initial Flow Pressure	<u>106</u>	P.S.I.	<u>--</u>	<u>138</u> Mins.
F Second Final Flow Pressure	<u>87</u>	P.S.I.		
G Final Closed-in Pressure	<u>951</u>	P.S.I.		
H Final Hydrostatic Mud	<u>1839</u>	P.S.I.		

PAGE THREE OF THREE

PRESSURE BREAKDOWN

First Flow Pressure  
Breakdown: 9 Inc.  
of 5 mins. and a  
final inc. of 0 Min.

Initial Shut-In  
Breakdown: 20 Inc.  
of 3 mins. and a  
final inc. of 0 Min.

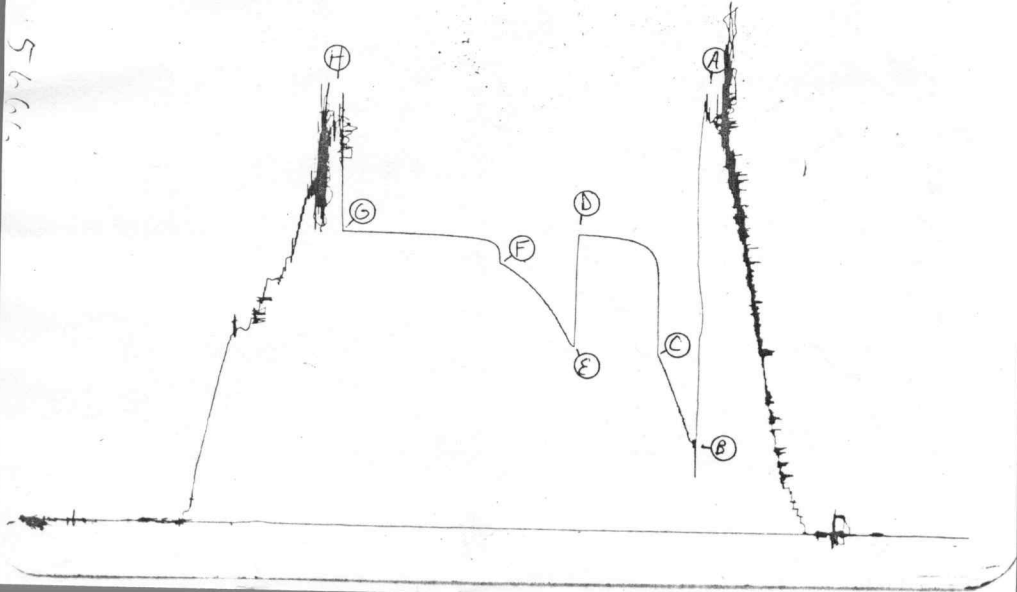
Second Flow Pressure  
Breakdown: 12 Inc.  
of 5 mins. and a  
final inc. of 0 Min.

Final Shut-In  
Breakdown: 46 Inc.  
of 3 mins. and a  
final inc. of 0 Min.

Point Mins.	Press.	Point Minutes	Press.	Point Minutes	Press.	Point Minutes	Press.
P 1						<u>126</u>	<u>942</u>
P 2						<u>129</u>	<u>946</u>
P 3						<u>132</u>	<u>948</u>
P 4						<u>135</u>	<u>950</u>
P 5						<u>138</u>	<u>951</u>
P 6							
P 7							
P 8							
P 9							
P10							
P11							
P12							
P13							
P14							
P15							
P16							
P17							
P18							
P19							
P20							

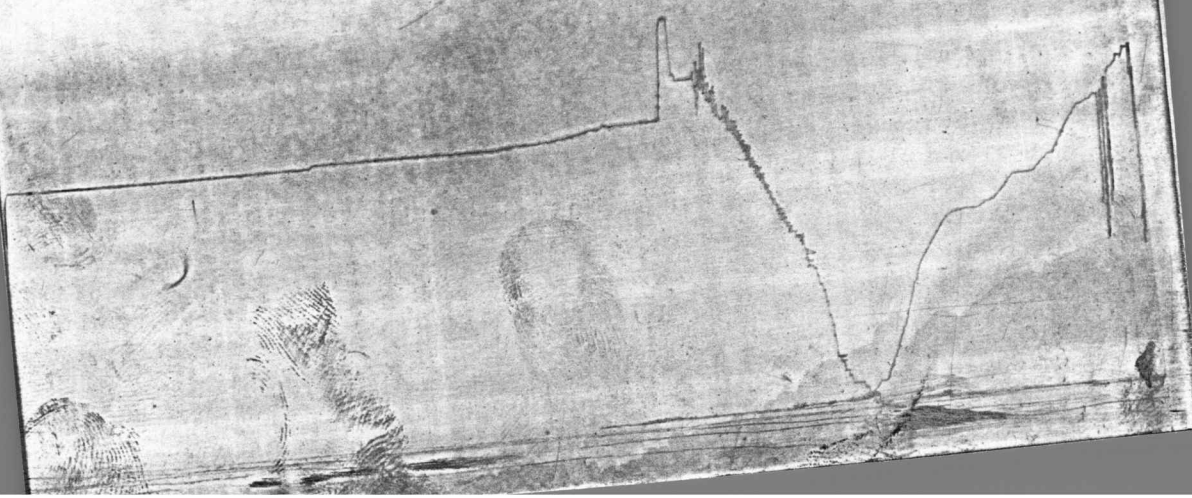
TKT # 8176  
I

DST# 2  
8176



TKT # 8176  
Below Straddle

DST #1  
8176



Company K.R.M. Petroleum Corporation Lease & Well No. Kostner #1-30  
 Elevation 1432 Kelly Bushing Formation Simpson Sand Effective Pay - Ft. Ticket No. 8176  
 Date 5/17/81 Sec. 30 Twp. 28S Range 5W County Kingman State Kansas  
 Test Approved by Ed Harger Western Representative Allen Edgington

Formation Test No. 2 Interval Tested from 4295 ft. to 4319 ft. Total Depth 4355 ft.  
 Packer Depth 4290 ft. Size 6 3/4 in. Packer Depth 4320 ft. Size 6 3/4 in.  
 Packer Depth 4295 ft. Size 6 3/4 in. Packer Depth - ft. Size - in.

Depth of Selective Zone Set -  
 Top Recorder Depth (Inside) 4308 ft. Recorder Number 5666 Cap. 3950  
 Bottom Recorder Depth (Outside) 4311 ft. Recorder Number 3354 Cap. 4200  
 Below Straddle Recorder Depth 4354 ft. Recorder Number 42 Cap. 400

Drilling Contractor Rains & Williamson Rig #3 Drill Collar Length 468 I. D. 2 1/4 in.  
 Mud Type Premix Agugel Viscosity 56 Weight Pipe Length - I. D. - in.  
 Weight 9.6 Water Loss 10.0 cc. Drill Pipe Length 3825 I. D. 3.8 in.  
 Chlorides 13,000 P.P.M. Test Tool Length 39 ft. Tool Size 4 1/2 OD in.  
 Jars: Make WTC Serial Number 404 Anchor Length 24 ft. Size 4 1/2 OD in.  
 Did Well Flow? No Reversed Out Yes Surface Choke Size 3/4 in. Bottom Choke Size 3/4 in.  
 Main Hole Size 7 7/8 in. Tool Joint Size 4 1/2 XH in.

Blow: Strong throughout test

Recovered 3000 ft. of saltwater Chlorides 44,000 PPM

Recovered          ft. of           
 Recovered          ft. of           
 Recovered          ft. of           
 Recovered          ft. of         

Remarks:         

Time Set Packer(s) 2:00 ~~A.M.~~ P.M. Time Started Off Bottom 6:30 ~~A.M.~~ P.M. Maximum Temperature 126  
 Initial Hydrostatic Pressure          (A) 2095 P.S.I.  
 Initial Flow Period          Minutes 30 (B) 431 P.S.I. to (C) 900 P.S.I.  
 Initial Closed In Period          Minutes 60 (D) 1511 P.S.I.  
 Final Flow Period          Minutes 55 (E) 930 P.S.I. to (F) 1355 P.S.I.  
 Final Closed In Period          Minutes 117 (G) 1506 P.S.I.  
 Final Hydrostatic Pressure          (H) 2065 P.S.I.

WESTERN TESTING CO., INC.

Pressure Data

Date 5/17/81 Test Ticket No. 8176  
 Recorder No. 5666 Capacity 3950 Location 4308 Ft.  
 Clock No. - Elevation 1432 Kelly Bushing Well Temperature 126 °F

Point	Pressure		Time Given	Time Computed
A Initial Hydrostatic Mud	2095	P.S.I.	2:00P	M
B First Initial Flow Pressure	431	P.S.I.	30	Mins. 30 Mins.
C First Final Flow Pressure	900	P.S.I.	60	Mins. 60 Mins.
D Initial Closed-in Pressure	1511	P.S.I.	60	Mins. 55 Mins.
E Second Initial Flow Pressure	930	P.S.I.	60	Mins. 117 Mins.
F Second Final Flow Pressure	1355	P.S.I.		
G Final Closed-in Pressure	1506	P.S.I.		
H Final Hydrostatic Mud	2065	P.S.I.		

PRESSURE BREAKDOWN

Point Mins.	First Flow Pressure		Initial Shut-In		Second Flow Pressure		Final Shut-In	
	Breakdown:	Inc.	Breakdown:	Inc.	Breakdown:	Inc.	Breakdown:	Inc.
	of 5 mins. and a final inc. of 0 Min.		of 3 mins. and a final inc. of 0 Min.		of 5 mins. and a final inc. of 0 Min.		of 3 mins. and a final inc. of 0 Min.	
Point Minutes	Press.	Point Minutes	Press.	Point Minutes	Press.	Point Minutes	Press.	
P 1 0	431	0	900	0	930	0	1355	
P 2 5	510	3	1388	5	976	3	1446	
P 3 10	600	6	1426	10	1036	6	1462	
P 4 15	685	9	1446	15	1098	9	1472	
P 5 20	773	12	1460	20	1143	12	1476	
P 6 25	861	15	1470	25	1185	15	1482	
P 7 30	900	18	1478	30	1223	18	1484	
P 8		21	1486	35	1259	21	1487	
P 9		24	1490	40	1287	24	1489	
P10		27	1493	45	1313	27	1490	
P11		30	1496	50	1337	30	1491	
P12		33	1498	55	1355	33	1493	
P13		36	1500			36	1494	
P14		39	1502			39	1495	
P15		42	1504			42	1496	
P16		45	1506			45	1497	
P17		48	1508			48	1497	
P18		51	1509			51	1498	
P19		54	1510			54	1498	
P20		57	1510			57	1499	
WTC - 4		60	1511			60	1500	

WESTERN TESTING CO., INC.

Pressure Data

Date 5/17/81

Test Ticket No. 8176

Recorder No. 5666

Capacity 3950

Location 4308

Clock No. - Elevation 1432 Kelly Bushing

Well Temperature 126 °F

Point	Pressure	Time Given	Time Computed
A Initial Hydrostatic Mud	<u>2095</u> P.S.I.	<u>2:00P</u> M	
B First Initial Flow Pressure	<u>431</u> P.S.I.	<u>30</u> Mins.	<u>30</u> Mins.
C First Final Flow Pressure	<u>900</u> P.S.I.	<u>60</u> Mins.	<u>60</u> Mins.
D Initial Closed-in Pressure	<u>1511</u> P.S.I.	<u>60</u> Mins.	<u>55</u> Mins.
E Second Initial Flow Pressure	<u>930</u> P.S.I.	<u>120</u> Mins.	<u>117</u> Mins.
F Second Final Flow Pressure	<u>1355</u> P.S.I.		
G Final Closed-in Pressure	<u>1506</u> P.S.I.		
H Final Hydrostatic Mud	<u>2065</u> P.S.I.		

PRESSURE BREAKDOWN

First Flow Pressure  
Breakdown: 6 Inc.  
of 5 mins. and a  
final inc. of 0 Min.

Initial Shut-In  
Breakdown: 20 Inc.  
of 3 mins. and a  
final inc. of 0 Min.

Second Flow Pressure  
Breakdown: 11 Inc.  
of 5 mins. and a  
final inc. of 0 Min.

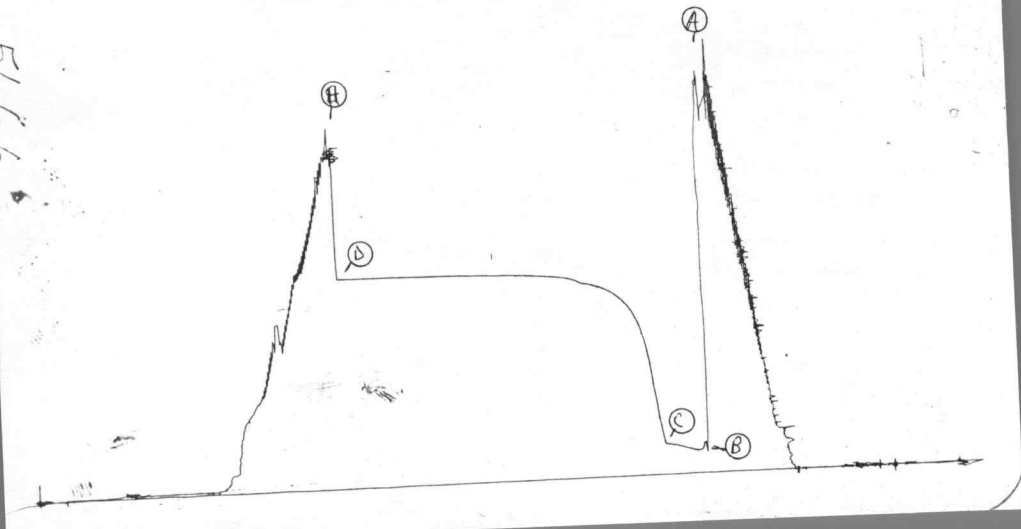
Final Shut-In  
Breakdown: 39 Inc.  
of 3 mins. and a  
final inc. of 0 Min.

Point Mins.	Press.	Point Minutes	Press.	Point Minutes	Press.	Point Minutes	Press.
P 1						<u>63</u>	<u>1500</u>
P 2						<u>66</u>	<u>1501</u>
P 3						<u>69</u>	<u>1502</u>
P 4						<u>72</u>	<u>1503</u>
P 5						<u>75</u>	<u>1504</u>
P 6						<u>78</u>	<u>1504</u>
P 7						<u>81</u>	<u>1504</u>
P 8						<u>84</u>	<u>1504</u>
P 9						<u>87</u>	<u>1504</u>
P10						<u>90</u>	<u>1504</u>
P11						<u>93</u>	<u>1505</u>
P12						<u>96</u>	<u>1505</u>
P13						<u>99</u>	<u>1505</u>
P14						<u>102</u>	<u>1505</u>
P15						<u>105</u>	<u>1506</u>
P16						<u>108</u>	<u>1506</u>
P17						<u>111</u>	<u>1506</u>
P18						<u>114</u>	<u>1506</u>
P19						<u>117</u>	<u>1506</u>
P20							

DST# 3  
8177

JKI " 8177  
I

5  
5  
5



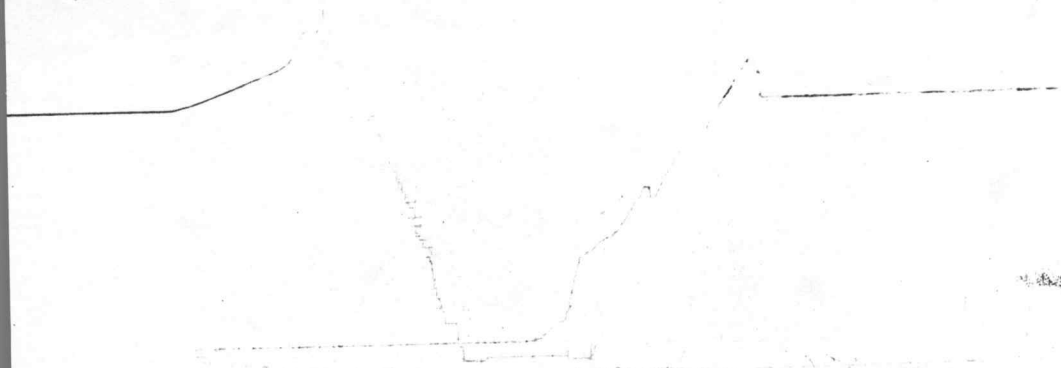
TKT # 8177

Below Straddle

42

151 3

8177



Company K.R.M. Petroleum Corporation Lease & Well No. Kostner #1-30  
 Elevation 1432 Kelly Bushing Formation Mississippi Effective Pay - Ft. Ticket No. 8177  
 Date 5/18/81 Sec. 30 Twp. 28S Range 5W County Kingman State Kansas  
 Test Approved by E P Chance Western Representative Allen Edgington

Formation Test No. 3 Interval Tested from 3885 ft. to 3910 ft. Total Depth 4355 ft.  
 Packer Depth 3885 ft. Size 6 3/4 in. Packer Depth 3880 ft. Size 6 3/4 in.  
 Packer Depth 3911 ft. Size 6 3/4 in. Packer Depth - ft. Size - in.  
 Depth of Selective Zone Set -

Top Recorder Depth (Inside) 3901 ft. Recorder Number 5666 Cap. 3950  
 Bottom Recorder Depth (Outside) 3904 ft. Recorder Number 3354 Cap. 4200  
 Below Straddle Recorder Depth 4354 ft. Recorder Number 42 Cap. 4000

Drilling Contractor Rains & Williamson Rig #3 Drill Collar Length 468 I. D. 2 1/4 in.  
 Mud Type Chemical Viscosity 60 Weight Pipe Length - I. D. - in.  
 Weight 9.3 Water Loss 11.2 cc. Drill Pipe Length 3390 I. D. 3.8 in.  
 Chlorides 20,000 P.P.M. Test Tool Length 32 ft. Tool Size 4 1/2 OD in.  
 Jars: Make WTC Serial Number 404 Anchor Length 25 ft. Size 4 1/2 OD in.  
 Did Well Flow? Yes Reversed Out No Surface Choke Size 3/4 in. Bottom Choke Size 3/4 in.  
 Main Hole Size 7 7/8 in. Tool Joint Size 4 1/2 XH in.

Blow: Strong for 38 minutes- very weak intermitten throughout rest. Gas to surface during initial close period.

Recovered 130 ft. of gas cut drilling mud  
 Recovered 120 ft. of slightly oil cut gas cut muddy water  
 Recovered 120 ft. of gas cut water 16,000 PPM  
 Recovered      ft. of       
 Recovered      ft. of     

Remarks: MISRUN

Time Set Packer(s)	<u>12:15</u>	<u>A.M.</u> <u>P.M.</u>	Time Started Off Bottom	<u>4:45</u>	<u>A.M.</u> <u>P.M.</u>	Maximum Temperature	<u>-</u>
Initial Hydrostatic Pressure			(A)	<u>1871</u>		P.S.I.	
Initial Flow Period			Minutes	<u>30</u>	(B)	<u>106</u>	P.S.I. to (C) <u>160</u> P.S.I.
Initial Closed In Period			Minutes	<u>237</u>	(D)	<u>1086</u>	P.S.I.
Final Flow Period			Minutes	<u>-</u>	(E)	<u>-</u>	P.S.I. to (F) <u>-</u> P.S.I.
Final Closed In Period			Minutes	<u>-</u>	(G)	<u>-</u>	P.S.I.
Final Hydrostatic Pressure			(H)	<u>1725</u>		P.S.I.	

**WESTERN TESTING CO., INC.**

**Pressure Data**

Date 5/18/81 Test Ticket No. 8177  
 Recorder No. 5666 Capacity 3950 Location 3901 Ft.  
 Clock No. - Elevation 1432 Kelly Bushing Well Temperature - °F

Point	Pressure		Time Given	Time Computed
A Initial Hydrostatic Mud	<u>1871</u>	P.S.I.	<u>12:15P</u>	<u>M</u>
B First Initial Flow Pressure	<u>106</u>	P.S.I.	<u>30</u>	<u>30</u> Mins.
C First Final Flow Pressure	<u>160</u>	P.S.I.	<u>60</u>	<u>237</u> Mins.
D Initial Closed-in Pressure	<u>1086</u>	P.S.I.	<u>60</u>	<u>-</u> Mins.
E Second Initial Flow Pressure	<u>-</u>	P.S.I.	<u>120</u>	<u>-</u> Mins.
F Second Final Flow Pressure	<u>-</u>	P.S.I.		
G Final Closed-in Pressure	<u>-</u>	P.S.I.		
H Final Hydrostatic Mud	<u>1725</u>	P.S.I.		

**PRESSURE BREAKDOWN**

**First Flow Pressure**  
 Breakdown: 6 Inc.  
 of 5 mins. and a  
 final inc. of 0 Min.

**Initial Shut-In**  
 Breakdown: 79 Inc.  
 of 3 mins. and a  
 final inc. of 0 Min.

**Second Flow Pressure**  
 Breakdown: 0 Inc.  
 of 5 mins. and a  
 final inc. of 0 Min.

**Final Shut-In**  
 Breakdown: 0 Inc.  
 of 3 mins. and a  
 final inc. of 0 Min.

Point Mins.	Press.	Point Minutes	Press.	Point Minutes	Press.	Point Minutes	Press.
P 1 <u>0</u>	<u>106</u>	<u>0</u>	<u>160</u>				
P 2 <u>5</u>	<u>122</u>	<u>3</u>	<u>273</u>				
P 3 <u>10</u>	<u>127</u>	<u>6</u>	<u>429</u>				
P 4 <u>15</u>	<u>135</u>	<u>9</u>	<u>588</u>				
P 5 <u>20</u>	<u>147</u>	<u>12</u>	<u>690</u>				
P 6 <u>25</u>	<u>155</u>	<u>15</u>	<u>765</u>				
P 7 <u>30</u>	<u>160</u>	<u>18</u>	<u>821</u>				
P 8 _____		<u>21</u>	<u>857</u>				
P 9 _____		<u>24</u>	<u>886</u>				
P10 _____		<u>27</u>	<u>908</u>				
P11 _____		<u>30</u>	<u>928</u>				
P12 _____		<u>33</u>	<u>946</u>				
P13 _____		<u>36</u>	<u>958</u>				
P14 _____		<u>39</u>	<u>970</u>				
P15 _____		<u>42</u>	<u>980</u>				
P16 _____		<u>45</u>	<u>988</u>				
P17 _____		<u>48</u>	<u>996</u>				
P18 _____		<u>51</u>	<u>1001</u>				
P19 _____		<u>54</u>	<u>1006</u>				
P20 _____		<u>57</u>	<u>1009</u>				
		<u>60</u>	<u>1021</u>				

WTC - 4

CONT'D NEXT PAGE

**WESTERN TESTING CO., INC.**  
**Pressure Data**

Date 5/18/81 Recorder No. 5666 Capacity 3950 Test Ticket No. 8177  
 Clock No. - Elevation 1432 Location Kelly Bushing 3901 Ft. Well Temperature - °F

Point	Pressure		Time Given	Time Computed
A Initial Hydrostatic Mud	<u>1871</u> P.S.I.	Open Tool	<u>12:15P</u> M	
B First Initial Flow Pressure	<u>106</u> P.S.I.	First Flow Pressure	<u>30</u> Mins.	<u>30</u> Mins.
C First Final Flow Pressure	<u>160</u> P.S.I.	Initial Closed-in Pressure	<u>60</u> Mins.	<u>237</u> Mins.
D Initial Closed-in Pressure	<u>1086</u> P.S.I.	Second Flow Pressure	<u>60</u> Mins.	<u>-</u> Mins.
E Second Initial Flow Pressure	<u>-</u> P.S.I.	Final Closed-in Pressure	<u>120</u> Mins.	<u>-</u> Mins.
F Second Final Flow Pressure	<u>-</u> P.S.I.			
G Final Closed-in Pressure	<u>-</u> P.S.I.			
H Final Hydrostatic Mud	<u>1725</u> P.S.I.			

**PRESSURE BREAKDOWN**

**First Flow Pressure**  
Breakdown: 6 Inc.  
of 5 mins. and a  
final inc. of 0 Min.

**Initial Shut-In**  
Breakdown: 79 Inc.  
of 3 mins. and a  
final inc. of 0 Min.

**Second Flow Pressure**  
Breakdown: 0 Inc.  
of 5 mins. and a  
final inc. of 0 Min.

**Final Shut-In**  
Breakdown: 0 Inc.  
of 3 mins. and a  
final inc. of 0 Min.

Point Mins.	Press.	Point Minutes	Press.	Point Minutes	Press.	Point Minutes	Press.
P 1		63	1030				
P 2		66	1036				
P 3		69	1040				
P 4		72	1043				
P 5		75	1046				
P 6		78	1048				
P 7		81	1050				
P 8		84	1052				
P 9		87	1054				
P10		90	1056				
P11		93	1058				
P12		96	1060				
P13		99	1062				
P14		102	1064				
P15		105	1066				
P16		108	1066				
P17		111	1067				
P18		114	1067				
P19		117	1068				
P20		120	1068				

WESTERN TESTING CO., INC.

Pressure Data

Date 5/18/81 Recorder No. 5666 Capacity 3950 Test Ticket No. 8177  
 Clock No. - Elevation 1432 Kelly Bushing Location 3901 Ft. -  
 Well Temperature - °F

Point	Pressure		Time Given	Time Computed
A Initial Hydrostatic Mud	<u>1871</u> P.S.I.	Open Tool	<u>12:15P</u> M	
B First Initial Flow Pressure	<u>106</u> P.S.I.	First Flow Pressure	<u>30</u> Mins.	<u>30</u> Mins.
C First Final Flow Pressure	<u>160</u> P.S.I.	Initial Closed-in Pressure	<u>60</u> Mins.	<u>237</u> Mins.
D Initial Closed-in Pressure	<u>1086</u> P.S.I.	Second Flow Pressure	<u>60</u> Mins.	<u>-</u> Mins.
E Second Initial Flow Pressure	<u>-</u> P.S.I.	Final Closed-in Pressure	<u>120</u> Mins.	<u>-</u> Mins.
F Second Final Flow Pressure	<u>-</u> P.S.I.			
G Final Closed-in Pressure	<u>-</u> P.S.I.			
H Final Hydrostatic Mud	<u>1725</u> P.S.I.			

PRESSURE BREAKDOWN

First Flow Pressure  
 Breakdown: 6 Inc.  
 of 5 mins. and a  
 final inc. of 0 Min.

Initial Shut-In  
 Breakdown: 79 Inc.  
 of 3 mins. and a  
 final inc. of 0 Min.

Second Flow Pressure  
 Breakdown: 0 Inc.  
 of 5 mins. and a  
 final inc. of 0 Min.

Final Shut-In  
 Breakdown: 0 Inc.  
 of 3 mins. and a  
 final inc. of 0 Min.

Point Mins.	Press.	Point Minutes	Press.	Point Minutes	Press.	Point Minutes	Press.
P 1		123	1070				
P 2		126	1071				
P 3		129	1072				
P 4		132	1073				
P 5		135	1074				
P 6		138	1075				
P 7		141	1076				
P 8		144	1077				
P 9		147	1077				
P10		150	1078				
P11		153	1078				
P12		156	1079				
P13		159	1079				
P14		162	1080				
P15		165	1081				
P16		168	1081				
P17		171	1081				
P18		174	1081				
P19		177	1081				
P20		180	1081				

WESTERN TESTING CO., INC.

Pressure Data

Date 5/18/81 Recorder No. 5666 Capacity 3950 Test Ticket No. 8177  
 Clock No. - Elevation 1432 Kelly Bushing Location 3901 Ft. -  
 Well Temperature - °F

Point	Pressure		Time Given	Time Computed
A Initial Hydrostatic Mud	<u>1871</u> P.S.I.	Open Tool	<u>12:15P</u> M	
B First Initial Flow Pressure	<u>106</u> P.S.I.	First Flow Pressure	<u>30</u> Mins.	<u>30</u> Mins.
C First Final Flow Pressure	<u>160</u> P.S.I.	Initial Closed-in Pressure	<u>60</u> Mins.	<u>237</u> Mins.
D Initial Closed-in Pressure	<u>1086</u> P.S.I.	Second Flow Pressure	<u>60</u> Mins.	<u>-</u> Mins.
E Second Initial Flow Pressure	<u>-</u> P.S.I.	Final Closed-in Pressure	<u>120</u> Mins.	<u>-</u> Mins.
F Second Final Flow Pressure	<u>-</u> P.S.I.			
G Final Closed-in Pressure	<u>-</u> P.S.I.			
H Final Hydrostatic Mud	<u>1725</u> P.S.I.			

PRESSURE BREAKDOWN

First Flow Pressure  
 Breakdown: 6 Inc.  
 of 5 mins. and a  
 final inc. of 0 Min.

Initial Shut-In  
 Breakdown: 79 Inc.  
 of 3 mins. and a  
 final inc. of 0 Min.

Second Flow Pressure  
 Breakdown: 0 Inc.  
 of 5 mins. and a  
 final inc. of 0 Min.

Final Shut-In  
 Breakdown: 0 Inc.  
 of 3 mins. and a  
 final inc. of 0 Min.

Point Mins.	Press.	Point Minutes	Press.	Point Minutes	Press.	Point Minutes	Press.
P 1		183	1082				
P 2		186	1082				
P 3		189	1083				
P 4		192	1083				
P 5		195	1084				
P 6		198	1084				
P 7		201	1084				
P 8		204	1084				
P 9		207	1084				
P 10		210	1084				
P 11		213	1085				
P 12		216	1085				
P 13		219	1085				
P 14		222	1085				
P 15		225	1086				
P 16		228	1086				
P 17		231	1086				
P 18		234	1086				
P 19		237	1086				
P 20							

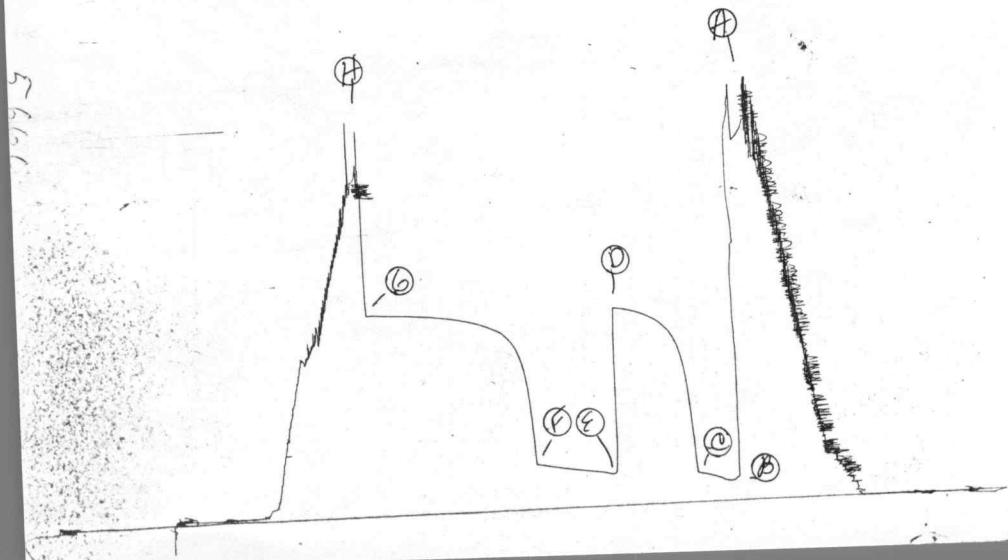
JK # 8178  
Below Straddle

01.10  
DST-1-C



DST #4

DKA # 8178  
I



TO: K.R.M. PETROLEUM CORPORATION  
817 - 17th Street  
Guaranty Bank Building  
Denver, Colorado 80202

FROM: WESTERN TESTING COMPANY, INC.  
Post Office Box 1599  
Wichita, Kansas 67202

DATE: 5/17; 5/18; 5/19/1981

SUBJECT: Copies of drill stem test mailed to interest owners:  
DRILL STEM TEST NUMBER: Test #2, #3 & #4

WELL NAME AND NUMBER : Kostner #1-30

COUNTY: Kingman County , Kansas

COPIES MAILED TO :

K. R. M. Petroleum Corporation  
817 17th Street  
Guaranty Bank Building  
Denver, Colorado 80202  
(Three copies + Invoice)

Joseph Thomas  
Post Office Box 4  
Senton, Texas 78377  
(One copy)

Maurice L. Brown  
200 Sutton Place  
Wichita, Kansas 67202  
(Two copies )

Noel LaJeune  
2970 Security LifeBldg.  
Denver, Colorado 80202  
(One copy)

Lloyd Jones  
Jones Oil Service  
P.O. Box 816  
Perryton, Texas 79070  
(One copy)

Antares Oil Corporation  
1667 Cole Blvd., Suite 210  
Golden, Colorado 80401  
(One copy)

Wilmonth Interests  
P.O. Box 203  
Marion Center, Penn.15759  
(One copy)

Landon Curry  
425 Guaranty Bank  
Corpus Christi, Texas 78475  
(One copy)

Company K.R.M. Petroleum Corporation Lease & Well No. Kostner #1-30  
 Elevation 1432 Kelly Bushing Formation Mississippi Effective Pay - Ft. Ticket No. 8178  
 Date 5/19/81 Sec. 30 Twp. 28S Range 5W County Kingman State Kansas  
 Test Approved by J Copeland Landes Western Representative Allen Edgington

Formation Test No. 4 Interval Tested from 3885 ft. to 3912 ft. Total Depth 4355 ft.  
 Packer Depth 3880 ft. Size 6 3/4 in. Packer Depth 3913 ft. Size 6 3/4 in.  
 Packer Depth 3885 ft. Size 6 3/4 in. Packer Depth - ft. Size - in.

Depth of Selective Zone Set -  
 Top Recorder Depth (Inside) 3903 ft. Recorder Number 5666 Cap. 3950  
 Bottom Recorder Depth (Outside) 3906 ft. Recorder Number 3354 Cap. 4200  
 Below Straddle Recorder Depth 4354 ft. Recorder Number 42 Cap. 4000

Drilling Contractor Rains & Williamson Rig #3 Drill Collar Length 468 I. D. 2 1/4 in.  
 Mud Type Chemical Viscosity 60 Weight Pipe Length - I. D. - in.  
 Weight 9.3 Water Loss 11.2 cc. Drill Pipe Length 3390 I. D. 3.8 in.  
 Chlorides 20,000 P.P.M. Test Tool Length 32 ft. Tool Size 4 1/2 OD in.  
 Jars: Make WIC Serial Number 404 Anchor Length 27 ft. Size 4 1/2 OD in.  
 Did Well Flow? Yes Reversed Out No Surface Choke Size 3/4 in. Bottom Choke Size 3/4 in.  
 Main Hole Size 7 7/8 in. Tool Joint Size 4 1/2 XH in.

Blow: Strong gas to surface in 30 minutes. See attached sheet for gas measurements.

Recovered 165 ft. of slightly oil & gas cut mud  
 Recovered 180 ft. of slightly oil & gas cut muddy water  
 Recovered 245 ft. of gas cut salt water Chlorides 94,000 PPM  
 Recovered        ft. of         
 Recovered        ft. of       

Remarks:       

Time Set Packer(s) 3:00 ~~PM~~ <sup>A.M.</sup> Time Started Off Bottom 7:30 ~~PM~~ <sup>A.M.</sup> Maximum Temperature 122  
 Initial Hydrostatic Pressure 1849 (A) P.S.I.  
 Initial Flow Period 30 Minutes (B) 114 P.S.I. to (C) 158 P.S.I.  
 Initial Closed In Period 57 Minutes (D) 1031 P.S.I.  
 Final Flow Period 60 Minutes (E) 178 P.S.I. to (F) 235 P.S.I.  
 Final Closed In Period 120 Minutes (G) 1046 P.S.I.  
 Final Hydrostatic Pressure 1715 (H) P.S.I.

## GAS FLOW REPORT

Date 5/19/81 Ticket 8178 Company K.R.M. Petroleum Corporation  
 Well Name and No. Kostner #1-30 Dst No. 4 Interval Tested 3885-3912  
 County Kingman State Kansas Sec. 30 Twp. 28S Rg. 5W

Time Gauge Pre-Flow	Time Gauge in Min.	P.S.I. on Merla Orifice Well Tester	P.S.I. on Pitot Tester	P.S.I. on Side Static Tester	P.S.I. on U-Tube Tester	Description of Flow
<b>PRE FLOW</b>						

Gas to surface on 2nd opening <b>SECOND FLOW</b>						
40 Min	4" water	3/8" Orifice				7,140 C.F.P.D.
50 Min	4" water	3/8" Orifice				7,140 C.F.P.D.
60 Min	4" water	3/8" Orifice				7,140 C.F.P.D.
70 Min	4" water	3/8" Orifice				7,140 C.F.P.D.
80 Min	4" water	3/8" Orifice				7,140 C.F.P.D.
90 Min	4" water	3/8" Orifice				7,140 C.F.P.D.

### GAS BOTTLE

Serial No.            - Date Bottle Filled            - Date to be Invoiced 5/19/81

Requisition and Provisions for high pressure stainless steel gas bottles. Western Testing Co., Inc. shall not be liable for damage of any kind to property or personnel of the one whom gas bottle is filled or for any loss suffered or sustained directly or indirectly through the use of these bottles. By signing of this ticket showing receipt of a gas testing bottle, the undersigned agrees for himself and as agent for operator, to return this bottle to Western Testing Co., Inc. within thirty (30) days free of charge, or be invoiced in the amount of \$75.00 (total charge). Should valve or seal plug be missing or damaged beyond repair, operator shall be invoiced for repairs at our invoiced price.

All charges subject to 1% per month, equal to 12% interest per annum after 30 days from date of invoice. Any expense incurred for collection will be added to the original amount.

COMPANY'S NAME K.R.M. Petroleum Corporation  
 Authorized by J. Copeland Landes

**WESTERN TESTING CO., INC.**  
**Pressure Data**

Date 5/19/81 Test Ticket No. 8178  
 Recorder No. 5666 Capacity 3950 Location 3903 Ft.  
 Clock No. - Elevation 1432 Kelly Bushing Well Temperature 122 °F

Point	Pressure		Time Given	Time Computed
A Initial Hydrostatic Mud	<u>1849</u> P.S.I.	Open Tool	<u>3:00A</u>	
B First Initial Flow Pressure	<u>114</u> P.S.I.	First Flow Pressure	<u>30</u> Mins.	<u>30</u> Mins.
C First Final Flow Pressure	<u>158</u> P.S.I.	Initial Closed-in Pressure	<u>60</u> Mins.	<u>57</u> Mins.
D Initial Closed-in Pressure	<u>1031</u> P.S.I.	Second Flow Pressure	<u>60</u> Mins.	<u>60</u> Mins.
E Second Initial Flow Pressure	<u>178</u> P.S.I.	Final Closed-in Pressure	<u>120</u> Mins.	<u>120</u> Mins.
F Second Final Flow Pressure	<u>235</u> P.S.I.			
G Final Closed-in Pressure	<u>1046</u> P.S.I.			
H Final Hydrostatic Mud	<u>1715</u> P.S.I.			

**PRESSURE BREAKDOWN**

**First Flow Pressure**  
 Breakdown: 6 Inc.  
 of 5 mins. and a  
 final inc. of 0 Min.

**Initial Shut-In**  
 Breakdown: 19 Inc.  
 of 3 mins. and a  
 final inc. of 0 Min.

**Second Flow Pressure**  
 Breakdown: 12 Inc.  
 of 5 mins. and a  
 final inc. of 0 Min.

**Final Shut-In**  
 Breakdown: 40 Inc.  
 of 3 mins. and a  
 final inc. of 0 Min.

Point Mins.	Press.	Point Minutes	Press.	Point Minutes	Press.	Point Minutes	Press.
P 1 <u>0</u>	<u>114</u>	<u>0</u>	<u>158</u>	<u>0</u>	<u>178</u>	<u>0</u>	<u>235</u>
P 2 <u>5</u>	<u>106</u>	<u>3</u>	<u>420</u>	<u>5</u>	<u>171</u>	<u>3</u>	<u>538</u>
P 3 <u>10</u>	<u>112</u>	<u>6</u>	<u>620</u>	<u>10</u>	<u>180</u>	<u>6</u>	<u>695</u>
P 4 <u>15</u>	<u>129</u>	<u>9</u>	<u>743</u>	<u>15</u>	<u>186</u>	<u>9</u>	<u>783</u>
P 5 <u>20</u>	<u>141</u>	<u>12</u>	<u>819</u>	<u>20</u>	<u>192</u>	<u>12</u>	<u>837</u>
P 6 <u>25</u>	<u>151</u>	<u>15</u>	<u>869</u>	<u>25</u>	<u>196</u>	<u>15</u>	<u>869</u>
P 7 <u>30</u>	<u>158</u>	<u>18</u>	<u>902</u>	<u>30</u>	<u>200</u>	<u>18</u>	<u>898</u>
P 8 _____	_____	<u>21</u>	<u>922</u>	<u>35</u>	<u>206</u>	<u>21</u>	<u>918</u>
P 9 _____	_____	<u>24</u>	<u>944</u>	<u>40</u>	<u>210</u>	<u>24</u>	<u>936</u>
P10 _____	_____	<u>27</u>	<u>960</u>	<u>45</u>	<u>218</u>	<u>27</u>	<u>942</u>
P11 _____	_____	<u>30</u>	<u>972</u>	<u>50</u>	<u>224</u>	<u>30</u>	<u>952</u>
P12 _____	_____	<u>33</u>	<u>982</u>	<u>55</u>	<u>231</u>	<u>33</u>	<u>960</u>
P13 _____	_____	<u>36</u>	<u>992</u>	<u>60</u>	<u>235</u>	<u>36</u>	<u>970</u>
P14 _____	_____	<u>39</u>	<u>1000</u>	_____	_____	<u>39</u>	<u>978</u>
P15 _____	_____	<u>42</u>	<u>1008</u>	_____	_____	<u>42</u>	<u>984</u>
P16 _____	_____	<u>45</u>	<u>1014</u>	_____	_____	<u>45</u>	<u>990</u>
P17 _____	_____	<u>48</u>	<u>1020</u>	_____	_____	<u>48</u>	<u>994</u>
P18 _____	_____	<u>51</u>	<u>1024</u>	_____	_____	<u>51</u>	<u>1000</u>
P19 _____	_____	<u>54</u>	<u>1028</u>	_____	_____	<u>54</u>	<u>1003</u>
P20 _____	_____	<u>57</u>	<u>1031</u>	_____	_____	<u>57</u>	<u>1008</u>
						<u>60</u>	<u>1011</u>

**WESTERN TESTING CO., INC.**  
**Pressure Data**

Date 5/19/81 Recorder No. 5666 Capacity 3950 Test Ticket No. 8178  
 Clock No. - Elevation 1432 Kelly Bushing Location 3903 Ft. 122 °F

Point	Pressure		Time Given	Time Computed
A Initial Hydrostatic Mud	<u>1849</u> P.S.I.	Open Tool	<u>3:00A</u>	
B First Initial Flow Pressure	<u>114</u> P.S.I.	First Flow Pressure	<u>30</u> Mins.	<u>30</u> Mins.
C First Final Flow Pressure	<u>158</u> P.S.I.	Initial Closed-in Pressure	<u>60</u> Mins.	<u>57</u> Mins.
D Initial Closed-in Pressure	<u>1031</u> P.S.I.	Second Flow Pressure	<u>60</u> Mins.	<u>60</u> Mins.
E Second Initial Flow Pressure	<u>178</u> P.S.I.	Final Closed-in Pressure	<u>120</u> Mins.	<u>120</u> Mins.
F Second Final Flow Pressure	<u>235</u> P.S.I.			
G Final Closed-in Pressure	<u>1046</u> P.S.I.			
H Final Hydrostatic Mud	<u>1715</u> P.S.I.			

**PRESSURE BREAKDOWN**

**First Flow Pressure**  
Breakdown: 6 Inc.  
of 5 mins. and a  
final inc. of 0 Min.

**Initial Shut-In**  
Breakdown: 19 Inc.  
of 3 mins. and a  
final inc. of 0 Min.

**Second Flow Pressure**  
Breakdown: 12 Inc.  
of 5 mins. and a  
final inc. of 0 Min.

**Final Shut-In**  
Breakdown: 40 Inc.  
of 3 mins. and a  
final inc. of 0 Min.

Point Mins.	Press.	Point Minutes	Press.	Point Minutes	Press.	Point Minutes	Press.
P 1						63	1014
P 2						66	1018
P 3						69	1020
P 4						72	1023
P 5						75	1026
P 6						78	1028
P 7						81	1030
P 8						84	1032
P 9						87	1033
P10						90	1034
P11						93	1036
P12						96	1037
P13						99	1038
P14						102	1039
P15						105	1040
P16						108	1042
P17						111	1043
P18						114	1044
P19						117	1045
P20						120	1046