

## DRILL-STEM TEST DATA

**Well Name:** KELLER A-1  
**Company :** MCGINNESS OIL COMPANY  
**Location - Sec:** 6                      **Twp:** 28S                      **Rge:** 17W  
**County:** KIOWA                      **State:** KS  
**Date:** 09/14/95

TRILOBITE TESTING L.L.C.

OPERATOR : McGinness Oil Company  
 WELL NAME: Keller A-1  
 LOCATION : 6-28S-17W, Kiowa Cty, KS  
 INTERVAL : 2406.00 To 2450.00 ft

DATE 09/07/95  
 KB 2187.00 ft TICKET NO: 8343 DST #1  
 GR 0.00 ft FORMATION: Krider  
 TD 2450.00 ft TEST TYPE: CONVENTIONAL

RECORDER DATA

Mins		Field	1	2	3	4	TIME DATA-----		
PF	0	Rec.	13788	10248			PF Fr.	to	hr
SI	0	Range(Psi )	4650.0	4400.0	0.0	0.0	IS Fr.	to	hr
SF	0	Clock(hrs)	22993	23858			SF Fr.	to	hr
FS	0	Depth(ft )	2447.0	2441.0	0.0	0.0	FS Fr.	to	hr

	Field	1	2	3	4			
A. Init Hydro	0.0	0.0	0.0	0.0	0.0	T STARTED		hr
B. First Flow	0.0	0.0	0.0	0.0	0.0	T ON BOTM		hr
B1. Final Flow	0.0	0.0	0.0	0.0	0.0	T OPEN		hr
C. In Shut-in	0.0	0.0	0.0	0.0	0.0	T PULLED		hr
D. Init Flow	0.0	0.0	0.0	0.0	0.0	T OUT		hr
E. Final Flow	0.0	0.0	0.0	0.0	0.0			
F. Fl Shut-in	0.0	0.0	0.0	0.0	0.0	TOOL DATA-----		
G. Final Hydro	0.0	0.0	0.0	0.0	0.0	Tool Wt.		0.00 lbs
Inside/Outside	O	I				Wt Set On Packer		0.00 lbs
						Wt Pulled Loose		0.00 lbs
						Initial Str Wt		0.00 lbs
						Unseated Str Wt		0.00 lbs
						Bot Choke		0.75 in
						Hole Size		7.88 in
						D Col. ID		2.25 in
						D. Pipe ID		3.80 in
						D.C. Length		240.00 ft
						D.P. Length		0.00 ft

RECOVERY

Tot Fluid 0.00 ft of 0.00 ft in DC and 0.00 ft in DP  
 0.00 ft of  
 0.00 ft of  
 0.00 ft of  
 0.00 ft of  
 0.00 ft of  
 0.00 ft of  
 0.00 ft of  
 0.00 ft of

SALINITY 0.00 P.P.M. A.P.I. Gravity 0.00

BLOW DESCRIPTION

Did not get tool to bottom; bridged off  
 18 stds. from bottom

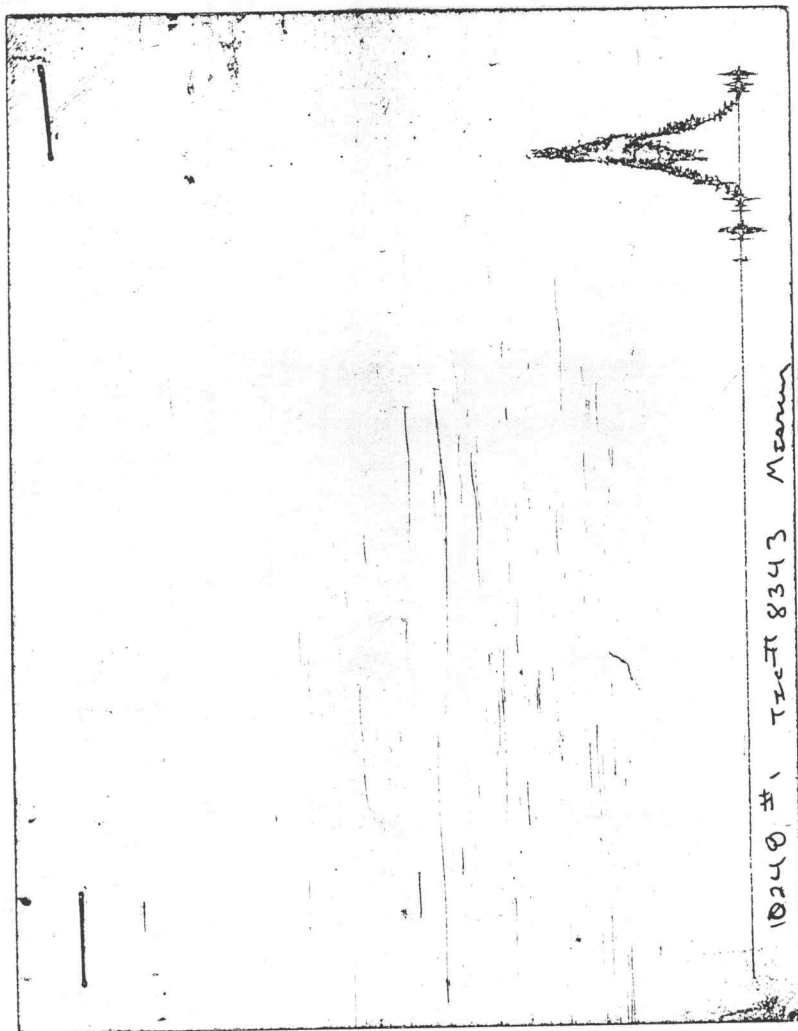
MUD DATA-----

Mud Type  
 Weight 0.00 lb/cf  
 Vis. 0.00 S/L  
 W.L. 0.00 in3  
 F.C. 0.00 in  
 Mud Drop  
 Amt. of fill 0.00 ft  
 Btm. H. Temp. 0.00 F  
 Hole Condition  
 % Porosity 0.00  
 Packer Size 6.75 in  
 No. of Packers 2  
 Cushion Amt. 0.00  
 Cushion Type  
 Reversed Out  
 Tool Chased  
 Tester Gary Pevoteaux  
 Co. Rep. Doug McGinness  
 Contr. Pickrell  
 Rig # 1  
 Unit #  
 Pump T.

SAMPLES:  
 SENT TO:

Test Successful: N

CHART PAGE



This is an actual photograph of recorder chart

TRILOBITE TESTING L.L.C.

OPERATOR : McGinness Oil Company  
 WELL NAME: Keller A-1  
 LOCATION : 6-28S-17W, Kiowa Cty, KS  
 INTERVAL : 2406.00 To 2450.00 ft

DATE 09/08/95  
 KB 2187.00 ft TICKET NO: 8344 DST #2  
 GR 0.00 ft FORMATION: Krider  
 TD 2450.00 ft TEST TYPE: CONVENTIONAL

RECORDER DATA

Mins		Field	1	2	3	4	TIME DATA-----
PF 30	Rec.	13788	13788	10248			PF Fr. 1403 to 1433 hr
SI 30	Range(Psi )	4650.0	4650.0	4400.0	0.0	0.0	IS Fr. 1433 to 1503 hr
SF 15	Clock(hrs)	22993	22993	23858			SF Fr. 1503 to 1518 hr
FS 30	Depth(ft )	2447.0	2447.0	2441.0	0.0	0.0	FS Fr. 1518 to 1548 hr

	Field	1	2	3	4		
A. Init Hydro	1213.0	1195.0	0.0	0.0	0.0	T STARTED	hr
B. First Flow	58.0	55.0	0.0	0.0	0.0	T ON BOTM	hr
B1. Final Flow	86.0	84.0	0.0	0.0	0.0	T OPEN	1403 hr
C. In Shut-in	710.0	713.0	0.0	0.0	0.0	T PULLED	1548 hr
D. Init Flow	98.0	98.0	0.0	0.0	0.0	T OUT	hr
E. Final Flow	109.0	107.0	0.0	0.0	0.0		
F. Fl Shut-in	710.0	713.0	0.0	0.0	0.0	TOOL DATA-----	
G. Final Hydro	1202.0	1183.0	0.0	0.0	0.0	Tool Wt.	0.00 lbs
Inside/Outside	0	0	I			Wt Set On Packer	0.00 lbs
						Wt Pulled Loose	0.00 lbs
						Initial Str Wt	0.00 lbs
						Unseated Str Wt	0.00 lbs
						Bot Choke	0.75 in
						Hole Size	7.88 in
						D Col. ID	2.25 in
						D. Pipe ID	3.80 in
						D.C. Length	240.00 ft
						D.P. Length	0.00 ft

RECOVERY

Tot Fluid 255.00 ft of 240.00 ft in DC and 15.00 ft in DP  
 2160.00 ft of Gas in pipe  
 255.00 ft of Heavy drilling mud  
 0.00 ft of  
 0.00 ft of  
 0.00 ft of  
 0.00 ft of  
 0.00 ft of  
 0.00 ft of

SALINITY 0.00 P.P.M. A.P.I. Gravity 0.00

BLOW DESCRIPTION

Initial Blow -  
 Strong blow, bottom of bucket in 15  
 sec; Gas to surface in 12 min

Final Blow -  
 Strong blow

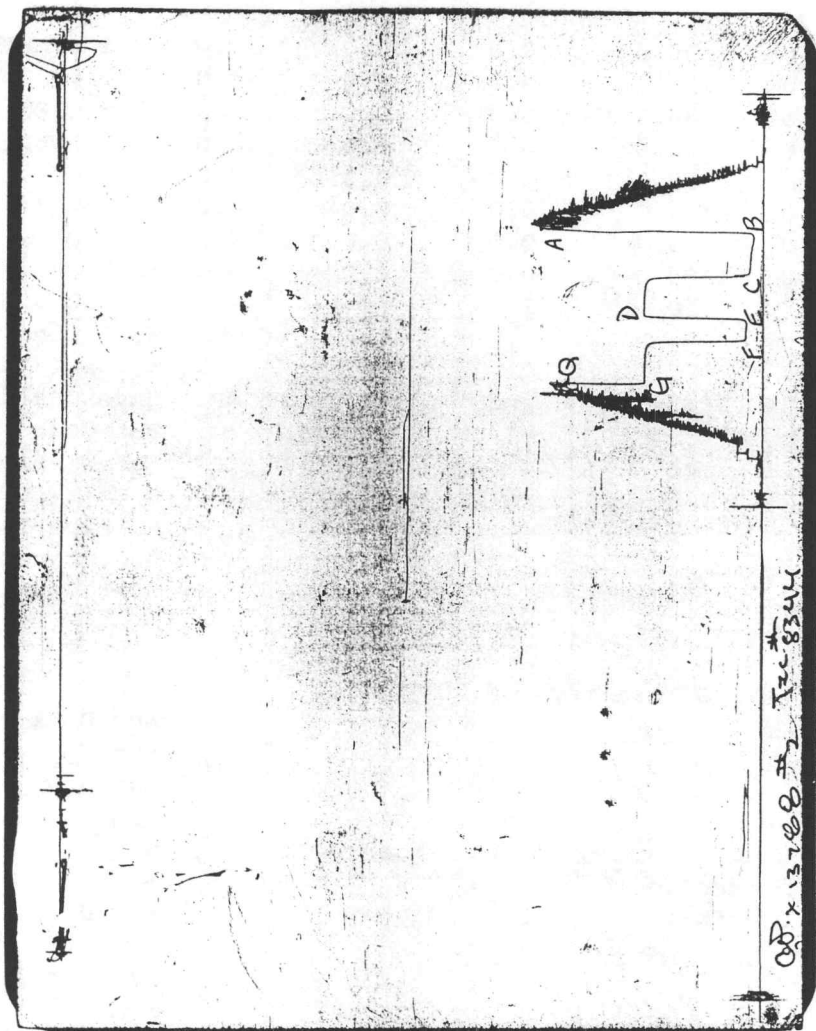
MUD DATA-----

Mud Type	
Weight	0.00 lb/cf
Vis.	0.00 S/L
W.L.	0.00 in3
F.C.	0.00 in
Mud Drop	
Amt. of fill	0.00 ft
Btm. H. Temp.	100.00 F
Hole Condition	
% Porosity	0.00
Packer Size	6.75 in
No. of Packers	2
Cushion Amt.	0.00
Cushion Type	
Reversed Out	
Tool Chased	
Tester	Gary Pevoteaux
Co. Rep.	Doug McGinness
Contr.	Pickrell
Rig #	1
Unit #	
Pump T.	

SAMPLES: 1  
 SENT TO: Caraway, Liberal KS

Test Successful: Y

CHART PAGE



This is an actual photograph of recorder chart



TRILOBITE TESTING L.L.C.

OPERATOR : McGinness Oil Company  
 WELL NAME: Keller A-1  
 LOCATION : 6-28S-17W, Kiowa Cty, KS  
 INTERVAL : 3503.00 To 3530.00 ft

DATE 09/10/95  
 KB 2187.00 ft TICKET NO: 8537 DST #3  
 GR 2182.00 ft FORMATION: Berlingame  
 TD 3530.00 ft TEST TYPE: CONVENTIONAL

RECORDER DATA

Mins	Field	1	2	3	4	TIME DATA-----
PF 30 Rec.	13849	13849	13754			PF Fr. 1920 to 1950 hr
SI 30 Range(Psi )	4375.0	4375.0	4000.0	0.0	0.0	IS Fr. 1950 to 2020 hr
SF 30 Clock(hrs)	12 hr	12 hr	12 hr			SF Fr. 2020 to 2050 hr
FS 30 Depth(ft )	3526.0	3526.0	3507.0	0.0	0.0	FS Fr. 2050 to 2120 hr

	Field	1	2	3	4	
A. Init Hydro	1852.0	1845.0	0.0	0.0	0.0	T STARTED 1820 hr
B. First Flow	55.0	46.0	0.0	0.0	0.0	T ON BOTM hr
B1. Final Flow	55.0	43.0	0.0	0.0	0.0	T OPEN 1920 hr
C. In Shut-in	1161.0	1148.0	0.0	0.0	0.0	T PULLED 2120 hr
D. Init Flow	66.0	61.0	0.0	0.0	0.0	T OUT 2300 hr
E. Final Flow	66.0	57.0	0.0	0.0	0.0	
F. Fl Shut-in	1106.0	1095.0	0.0	0.0	0.0	TOOL DATA-----
G. Final Hydro	1754.0	1752.0	0.0	0.0	0.0	Tool Wt. 0.00 lbs
Inside/Outside	0	0	I			Wt Set On Packer 30000.00 lbs
						Wt Pulled Loose 50000.00 lbs
						Initial Str Wt 50000.00 lbs
						Unseated Str Wt 50000.00 lbs
						Bot Choke 0.75 in
						Hole Size 7.88 in
						D Col. ID 2.25 in
						D. Pipe ID 3.80 in
						D.C. Length 240.00 ft
						D.P. Length 3290.00 ft

RECOVERY

Tot Fluid 70.00 ft of 70.00 ft in DC and 0.00 ft in DP  
 70.00 ft of Drilling Mud  
 0.00 ft of  
 0.00 ft of  
 0.00 ft of  
 0.00 ft of  
 0.00 ft of  
 0.00 ft of  
 0.00 ft of

SALINITY 0.00 P.P.M. A.P.I. Gravity 0.00

BLOW DESCRIPTION

Initial Blow -  
 Strong, bottom of bucket in 15 sec;  
 Gas to surface in 30 min

Final Blow -  
 Strong, bottom of bucket in 30 sec;  
 Gas sample taken, gauged gas

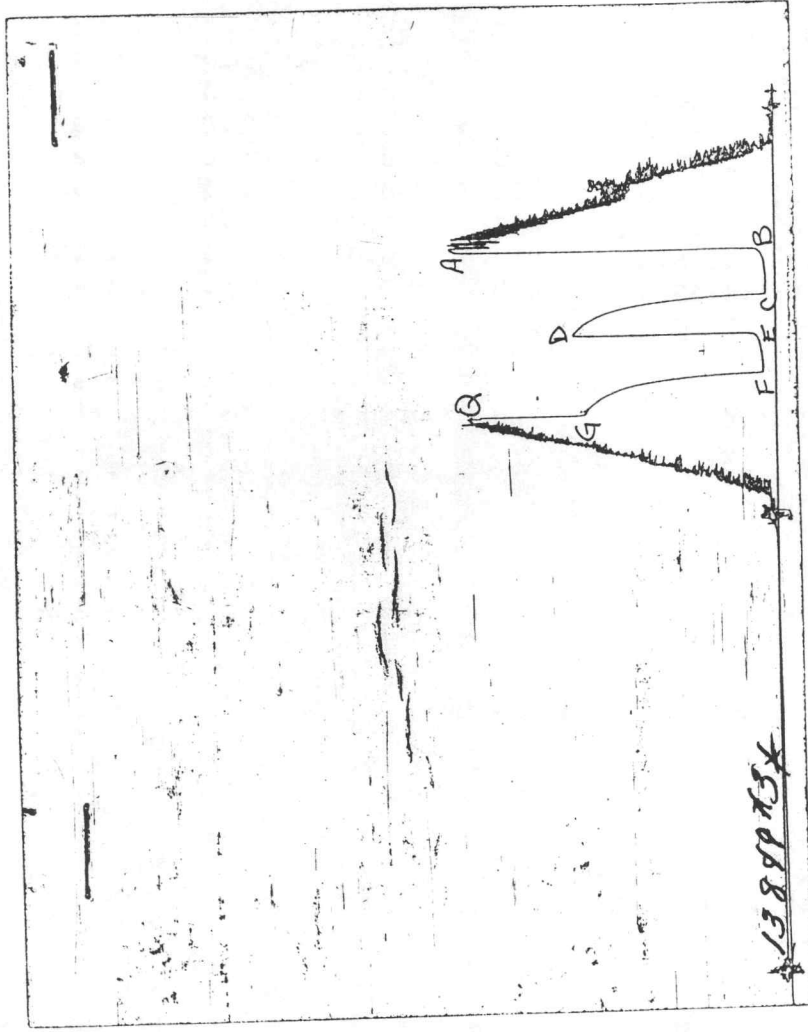
SAMPLES:  
 SENT TO:

MUD DATA-----

Mud Type	Chemical
Weight	9.10 lb/cf
Vis.	43.00 S/L
W.L.	28.80 in3
F.C.	0.00 in
Mud Drop	
Amt. of fill	0.00 ft
Btm. H. Temp.	101.00 F
Hole Condition	
% Porosity	0.00
Packer Size	6.75 in
No. of Packers	2
Cushion Amt.	0.00
Cushion Type	
Reversed Out	
Tool Chased	
Tester	Dan Bangle
Co. Rep.	Doug McGinness
Contr.	Pickrell
Rig #	1
Unit #	
Pump T.	

Test Successful: Y

CHART PAGE



This is an actual photograph of recorder chart

GAS RECOVERY

COMPANY: McGinness Oil Company

DATE: 09/10/95

WELL NAME: Keller A-1

KB Elev: 2187.00 ft TICKET #8537 DST #3

WELL LOCATION: 6-28S-17W, Kiowa Cty, KS

GR Elev: 2182.00 ft FORMATION: Berlingame

INTERVAL Fr.: 3503.00 To 3530.00 T.D.: 3530.00 ft TEST TYPE: CONVENTIONAL

GAS RECOVERY MEASURED WITH Merla

\*\*\*\*\* GAS RATES FOR FLOW #1

Time (min)	Orifice (in)	Pressure (Psi)	H2O (in)	Rate (cf/d)
25	0.25	0	60	13000.0
30	0.50	22	0	29400.0

\*\*\*\*\* GAS RATES FOR FLOW #2

Time (min)	Orifice (in)	Pressure (Psi)	H2O (in)	Rate (cf/d)
0	0.50	5	0	78100.0
5	0.50	3	0	59200.0
10	0.50	0	30	34300.0
15	0.50	0	20	28000.0
20	0.50	0	10	19900.0
25	0.50	0	10	19900.0
30	0.50	0	10	19900.0

TRILOBITE TESTING L.L.C.

OPERATOR : McGinness Oil Company  
 WELL NAME: Keller A-1  
 LOCATION : 6-28S-17W, Kiowa Cty, KS  
 INTERVAL : 4168.00 To 4191.00 ft

DATE 09/12/95  
 KB 2187.00 ft TICKET NO: 8538 DST #4  
 GR 2182.00 ft FORMATION: Lansing  
 TD 4191.00 ft TEST TYPE: CONVENTIONAL

RECORDER DATA

Mins	Field	1	2	3	4	TIME DATA-----
PF 15 Rec.	13754	13754	13849			PF Fr. 0215 to 0230 hr
SI 15 Range(Psi )	4000.0	4000.0	0.0	0.0	0.0	IS Fr. 0230 to 0245 hr
SF 30 Clock(hrs)	12 hr	12 hr	12 hr			SF Fr. 0245 to 0315 hr
FS 30 Depth(ft )	4172.0	4172.0	4187.0	0.0	0.0	FS Fr. 0315 to 0345 hr

	Field	1	2	3	4	
A. Init Hydro	2238.0	2252.0	0.0	0.0	0.0	T STARTED 0025 hr
B. First Flow	0.0	0.0	0.0	0.0	0.0	T ON BOTM hr
B1. Final Flow	0.0	0.0	0.0	0.0	0.0	T OPEN 0215 hr
C. In Shut-in	0.0	0.0	0.0	0.0	0.0	T PULLED 0345 hr
D. Init Flow	0.0	0.0	0.0	0.0	0.0	T OUT 0830 hr
E. Final Flow	0.0	0.0	0.0	0.0	0.0	
F. Fl Shut-in	0.0	0.0	0.0	0.0	0.0	TOOL DATA-----
G. Final Hydro	2137.0	2119.0	0.0	0.0	0.0	Tool Wt. 0.00 lbs
Inside/Outside	I	I	O			Wt Set On Packer 30000.00 lbs
						Wt Pulled Loose 180000.00 lbs
						Initial Str Wt 52000.00 lbs
						Unseated Str Wt 52000.00 lbs
						Bot Choke 0.75 in
						Hole Size 7.88 in
						D Col. ID 2.25 in
						D. Pipe ID 3.80 in
						D.C. Length 240.00 ft
						D.P. Length 3971.00 ft

RECOVERY

Tot Fluid 50.00 ft of 50.00 ft in DC and 0.00 ft in DP  
 50.00 ft of Heavy mud - 100% mud  
 0.00 ft of  
 0.00 ft of  
 0.00 ft of  
 0.00 ft of  
 0.00 ft of  
 0.00 ft of  
 0.00 ft of  
 SALINITY 0.00 P.P.M. A.P.I. Gravity 0.00

MUD DATA-----

Mud Type	Chemical
Weight	8.90 lb/cf
Vis.	46.00 S/L
W.L.	12.00 in3
F.C.	0.00 in
Mud Drop	

BLOW DESCRIPTION

Initial Blow -  
 Slid tool 15' to bottom, 4" blow decreasing to no blow in 5 min

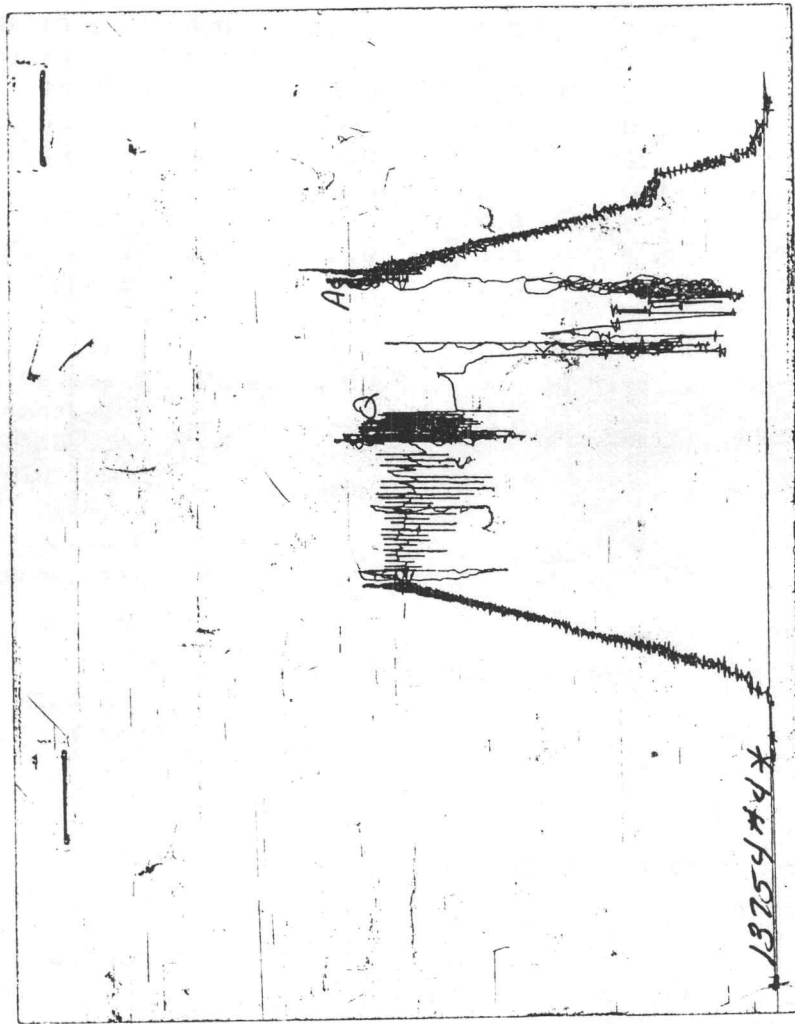
Final Blow -  
 2" blow, dead in 5 min, flushed tool, good surge died in 10 min; stuck for 2 hrs, plugged tool

Amt. of fill	0.00 ft
Btm. H. Temp.	110.00 F
Hole Condition	
% Porosity	0.00
Packer Size	6.75 in
No. of Packers	2
Cushion Amt.	0.00
Cushion Type	
Reversed Out	
Tool Chased	
Tester	Dan Bangle
Co. Rep.	Doug McGinness
Contr.	Pickrell
Rig #	1
Unit #	
Pump T.	

SAMPLES:  
 SENT TO:

Test Successful:

CHART PAGE



This is an actual photograph of recorder chart

TRILOBITE TESTING L.L.C.

OPERATOR : McGinness Oil Company  
 WELL NAME: Keller A-1  
 LOCATION : 6-28S-17W, Kiowa Cty, KS  
 INTERVAL : 4168.00 To 4191.00 ft

DATE 09/12/95

KB 2187.00 ft TICKET NO: 8539 DST #5  
 GR 2182.00 ft FORMATION: Lansing  
 TD 4191.00 ft TEST TYPE: CONVENTIONAL

RECORDER DATA

Mins		Field	1	2	3	4	TIME DATA-----
PF 30	Rec.	13849	13849	13754			PF Fr. 1515 to 1545 hr
SI 30	Range(Psi )	4375.0	4375.0	4000.0	0.0	0.0	IS Fr. 1545 to 1615 hr
SF 30	Clock(hrs)	12 hr	12 hr	12 hr			SF Fr. 1615 to 1645 hr
FS 30	Depth(ft )	4187.0	4187.0	4172.0	0.0	0.0	FS Fr. 1645 to 1715 hr

	Field	1	2	3	4	
A. Init Hydro	2015.0	2013.0	0.0	0.0	0.0	T STARTED 1400 hr
B. First Flow	55.0	60.0	0.0	0.0	0.0	T ON BOTM hr
B1. Final Flow	55.0	60.0	0.0	0.0	0.0	T OPEN 1515 hr
C. In Shut-in	500.0	492.0	0.0	0.0	0.0	T PULLED 1715 hr
D. Init Flow	77.0	78.0	0.0	0.0	0.0	T OUT 1830 hr
E. Final Flow	77.0	78.0	0.0	0.0	0.0	
F. Fl Shut-in	477.0	463.0	0.0	0.0	0.0	TOOL DATA-----
G. Final Hydro	1971.0	1970.0	0.0	0.0	0.0	Tool Wt. 0.00 lbs
Inside/Outside	0	0	I			Wt Set On Packer 30000.00 lbs

RECOVERY

Tot Fluid 90.00 ft of 90.00 ft in DC and 0.00 ft in DP  
 898.00 ft of Gas in pipe  
 90.00 ft of Gassy mud - 20% gas, 80% mud  
 0.00 ft of  
 0.00 ft of  
 0.00 ft of  
 0.00 ft of  
 0.00 ft of  
 0.00 ft of

Unseated Str Wt 52000.00 lbs  
 Bot Choke 0.75 in  
 Hole Size 7.88 in  
 D Col. ID 2.25 in  
 D. Pipe ID 3.80 in  
 D.C. Length 240.00 ft  
 D.P. Length 3971.00 ft

SALINITY 0.00 P.P.M. A.P.I. Gravity 0.00

MUD DATA-----

BLOW DESCRIPTION

Initial Blow -  
 Strong, bottom of bucket in 5 min

Final Blow -  
 Strong, bottom of bucket in 4 min

Mud Type	Chemical
Weight	9.10 lb/cf
Vis.	56.00 S/L
W.L.	9.60 in3
F.C.	0.00 in

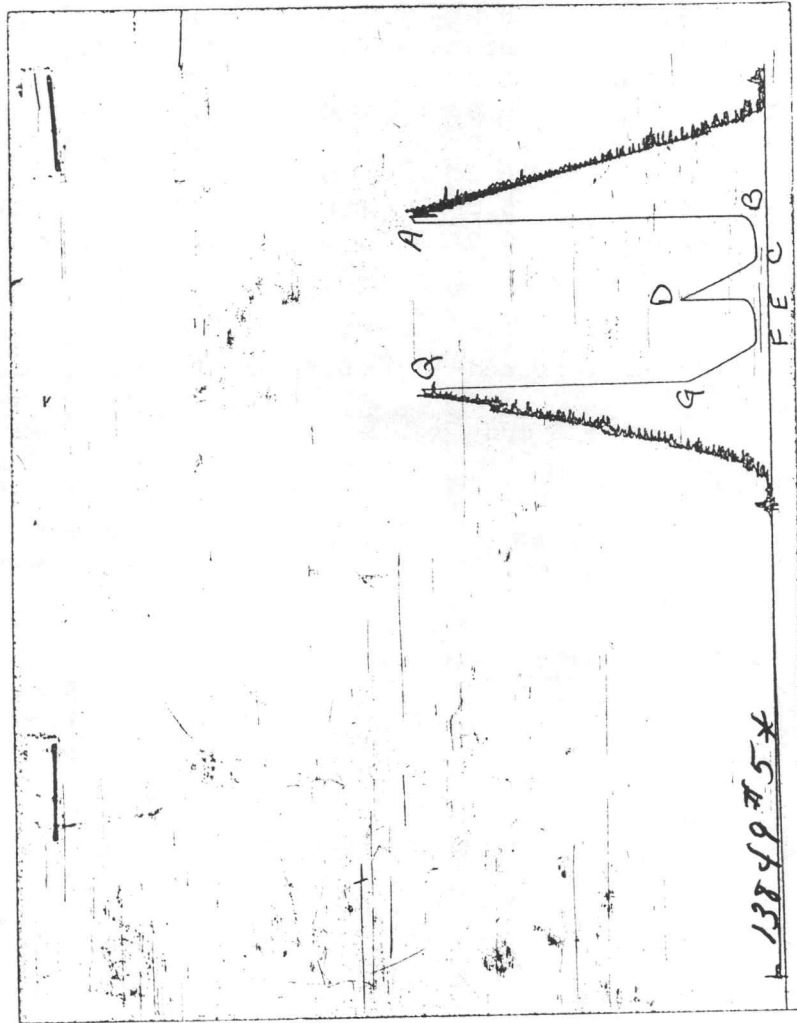
Mud Drop  
 Amt. of fill 0.00 ft  
 Btm. H. Temp. 110.00 F  
 Hole Condition  
 % Porosity 0.00  
 Packer Size 6.75 in  
 No. of Packers 2  
 Cushion Amt. 0.00  
 Cushion Type  
 Reversed Out  
 Tool Chased

SAMPLES:  
 SENT TO:

Tester Dan Bangle  
 Co. Rep. Doug McGinness  
 Contr. Pickrell  
 Rig # 1  
 Unit #  
 Pump T.

Test Successful: Y

CHART PAGE



This is an actual photograph of recorder chart

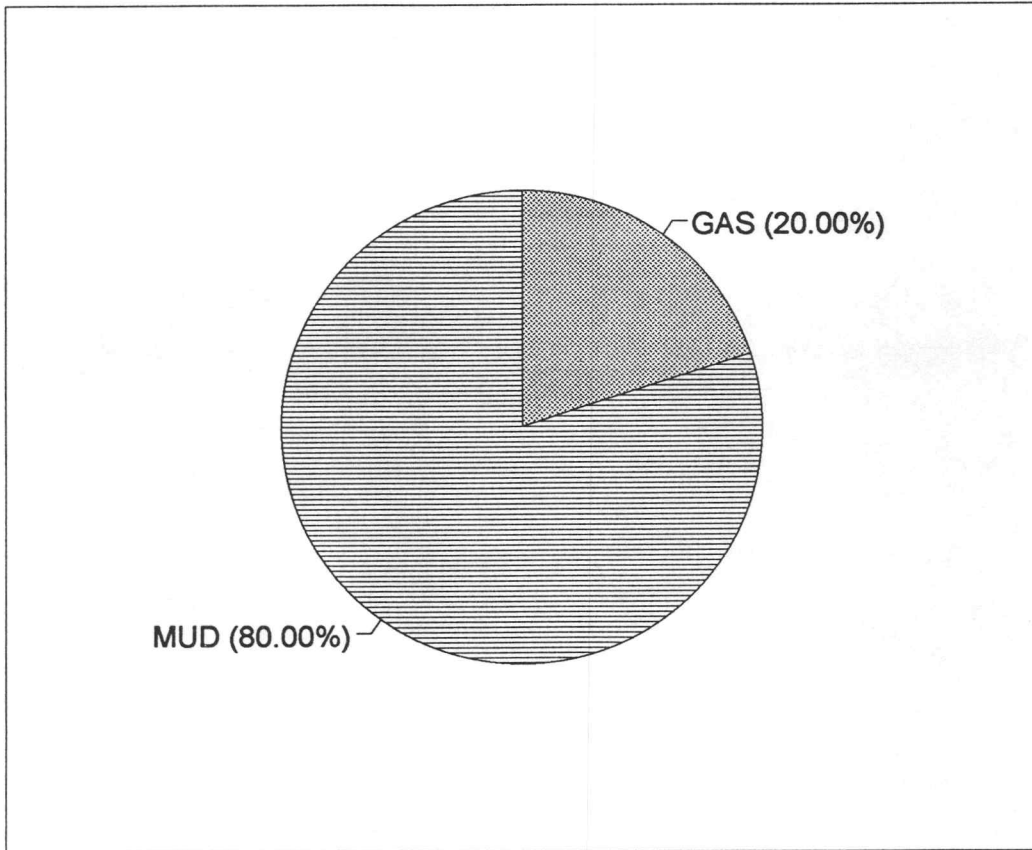
# CALCULATED RECOVERY ANALYSIS - DRILL COLLARS

DST # 5

TICKET # 8539

SAMPLE #	TOTAL FEET	GAS		OIL		WATER		MUD	
		%	FEET	%	FEET	%	FEET	%	FEET
1	90	20	18		0		0	80	72
2			0		0		0		0
3			0		0		0		0
4			0		0		0		0
5			0		0		0		0
<b>TOTAL</b>	<b>90</b>	<b>20.00</b>	<b>18</b>	<b>0.00</b>	<b>0</b>	<b>0.00</b>	<b>0</b>	<b>80</b>	<b>72</b>

			HRS OPE BBL/DAY	
BBL OIL=	0	*	1.00	0
BBL WAT	0	*		0
BBL MUD	0.35208			
BBL GAS	0.08802			



TRILOBITE TESTING L.L.C.

OPERATOR : McGinness Oil Company  
 WELL NAME: Keller A-1  
 LOCATION : 6-28S-17W, Kiowa Cty, KS  
 INTERVAL : 4712.00 To 4764.00 ft

DATE 09/14/95  
 KB 2187.00 ft TICKET NO: 8540 DST #6  
 GR 2182.00 ft FORMATION: Mississippi  
 TD 47640.00 ft TEST TYPE: CONVENTIONAL

RECORDER DATA

Mins		Field	1	2	3	4	TIME DATA-----
PF 30	Rec.	13754	13754	13849			PF Fr. 0255 to 0325 hr
SI 30	Range(Psi )	4000.0	4000.0	4375.0	0.0	0.0	IS Fr. 0325 to 0355 hr
SF 30	Clock(hrs)	12 hr	12 hr	12 hr			SF Fr. 0355 to 0425 hr
FS 60	Depth(ft )	4716.0	4716.0	4760.0	0.0	0.0	FS Fr. 0425 to 0525 hr

	Field	1	2	3	4	
A. Init Hydro	2441.0	2464.0	0.0	0.0	0.0	T STARTED 0130 hr
B. First Flow	59.0	66.0	0.0	0.0	0.0	T ON BOTM hr
B1. Final Flow	59.0	66.0	0.0	0.0	0.0	T OPEN 0255 hr
C. In Shut-in	1286.0	1300.0	0.0	0.0	0.0	T PULLED 0525 hr
D. Init Flow	59.0	62.0	0.0	0.0	0.0	T OUT 0715 hr
E. Final Flow	59.0	62.0	0.0	0.0	0.0	
F. Fl Shut-in	1286.0	1302.0	0.0	0.0	0.0	TOOL DATA-----
G. Final Hydro	2390.0	2406.0	0.0	0.0	0.0	Tool Wt. 0.00 lbs
Inside/Outside	I	I	O			Wt Set On Packer 30000.00 lbs
						Wt Pulled Loose 100000.00 lbs
						Initial Str Wt 55000.00 lbs
						Unseated Str Wt 55000.00 lbs
						Bot Choke 0.75 in
						Hole Size 7.88 in
						D Col. ID 2.25 in
						D. Pipe ID 3.80 in
						D.C. Length 240.00 ft
						D.P. Length 4524.00 ft

RECOVERY

Tot Fluid 60.00 ft of 60.00 ft in DC and 0.00 ft in DP  
 60.00 ft of Gassy mud - 20% gas, 80% mud  
 0.00 ft of  
 0.00 ft of  
 0.00 ft of  
 0.00 ft of  
 0.00 ft of  
 0.00 ft of  
 0.00 ft of

SALINITY 0.00 P.P.M. A.P.I. Gravity 0.00

BLOW DESCRIPTION

Initial Blow -  
 Slid tool 10' to bottom, strong blow,  
 bottom of bucket in 1 min; gas to  
 surface in 10 min

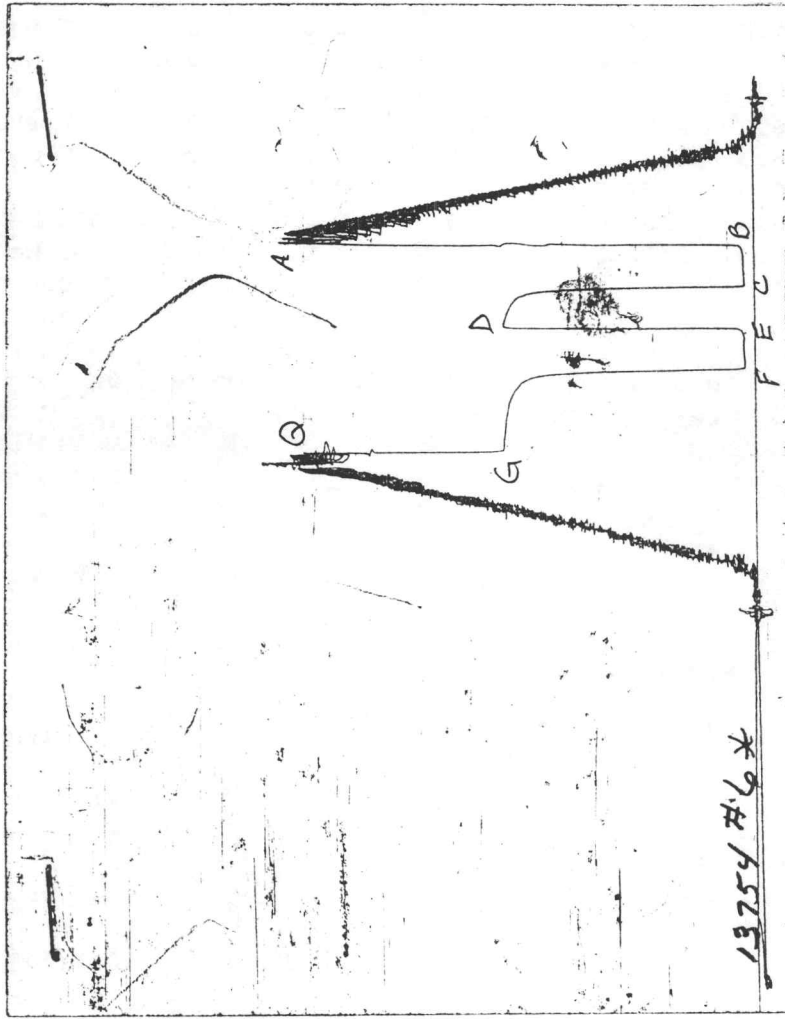
Final Blow -  
 Strong, bottom of bucket as soon as  
 tool opened

SAMPLES:  
 SENT TO:

MUD DATA-----  
 Mud Type Chemical  
 Weight 9.10 lb/cf  
 Vis. 52.00 S/L  
 W.L. 10.40 in3  
 F.C. 0.00 in  
 Mud Drop  
 Amt. of fill 0.00 ft  
 Btm. H. Temp. 120.00 F  
 Hole Condition  
 % Porosity 0.00  
 Packer Size 6.75 in  
 No. of Packers 2  
 Cushion Amt. 0.00  
 Cushion Type  
 Reversed Out  
 Tool Chased  
 Tester Dan Bangle  
 Co. Rep. Doug McGinness  
 Contr. Pickrell  
 Rig # 1  
 Unit #  
 Pump T.

Test Successful: Y

CHART PAGE



This is an actual photograph of recorder chart

GAS RECOVERY

COMPANY: McGinness Oil Company  
WELL NAME: Keller A-1  
WELL LOCATION: 6-28S-17W, Kiowa Cty, KS  
INTERVAL Fr.: 4712.00 To 4764.00 T.D.: 47640.00 ft

DATE: 09/14/95  
KB Elev: 2187.00 ft TICKET #8540 DST #6  
GR Elev: 2182.00 ft FORMATION: Mississippi  
TEST TYPE: CONVENTIONAL

GAS RECOVERY MEASURED WITH Merla

\*\*\*\*\* GAS RATES FOR FLOW #1

Time (min)	Orifice (in)	Pressure (Psi)	H2O (in)	Rate (cf/d)
10	0.75	0	20	63500.0
15	0.75	0	28	75100.0
20	0.75	0	34	82800.0
25	0.75	0	36	85200.0
30	0.75	0	38	87500.0

\*\*\*\*\* GAS RATES FOR FLOW #2

Time (min)	Orifice (in)	Pressure (Psi)	H2O (in)	Rate (cf/d)
0	1.00	0	19	113000.0
5	1.00	0	17	106000.0
10	1.00	0	15	101000.0
15	1.00	0	15	101000.0
20	1.00	0	15	101000.0
25	1.00	0	15	101000.0
30	1.00	0	15	101000.0

# CALCULATED RECOVERY ANALYSIS - DRILL COLLARS

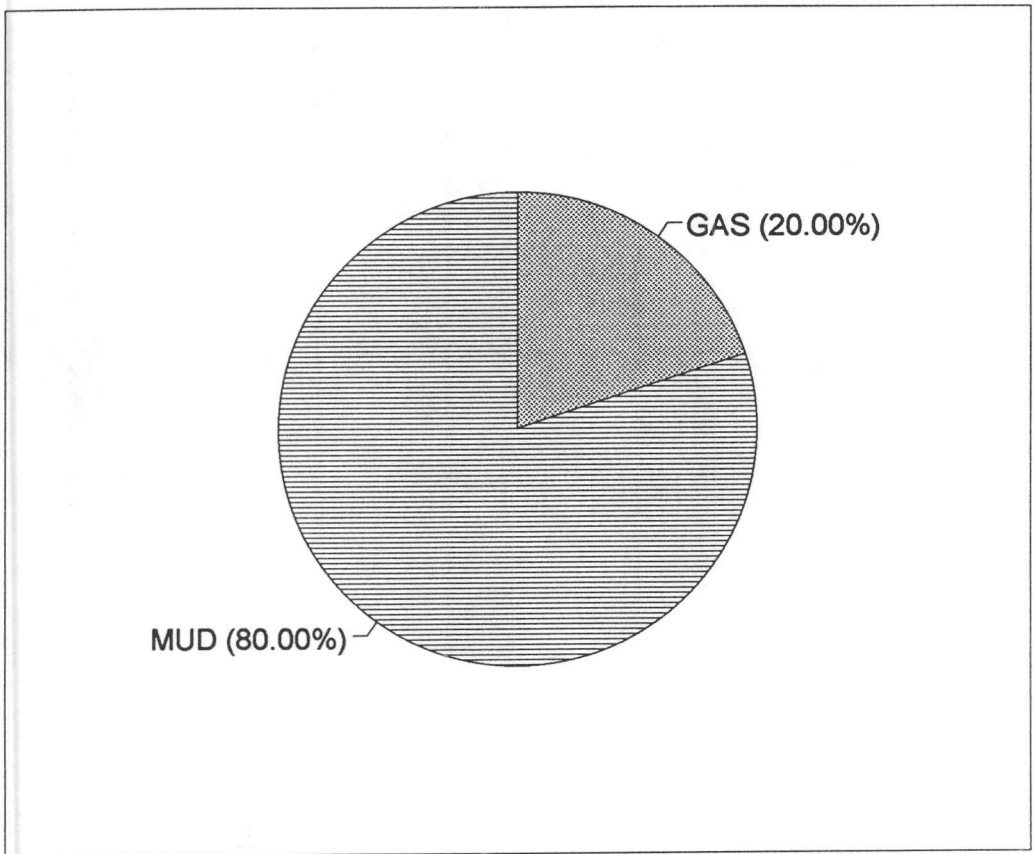
DST # 6

TICKET # 8540

SAMPLE #	TOTAL FEET	GAS		OIL		WATER		MUD	
		%	FEET	%	FEET	%	FEET	%	FEET
1	60	20	12	0	0	0	0	80	48
2			0	0	0	0	0		0
3			0	0	0	0	0		0
4			0	0	0	0	0		0
5			0	0	0	0	0		0
<b>TOTAL</b>	<b>60</b>	<b>20.00</b>	<b>12</b>	<b>0.00</b>	<b>0</b>	<b>0.00</b>	<b>0</b>	<b>80</b>	<b>48</b>

HRS OPE BBL/DAY

BBL OIL=	0	*	1.00	0
BBL WAT	0	*		0
BBL MUD	0.23472			
BBL GAS	0.05868			



TRILOBITE TESTING L.L.C.

OPERATOR : McGinness Oil Company  
 WELL NAME: Keller A-1  
 LOCATION : 6-28S-17W, Kiowa Cty, KS  
 INTERVAL : 4766.00 To 4795.00 ft

DATE 09/14/95  
 KB 2187.00 ft TICKET NO: 8541 DST #7  
 GR 2182.00 ft FORMATION: Kinderhook Sd  
 TD 4795.00 ft TEST TYPE: CONVENTIONAL

RECORDER DATA

Mins		Field	1	2	3	4	TIME DATA-----
PF 30	Rec.	13754	13754	13849			PF Fr. 1705 to 1735 hr
SI 30	Range(Psi )	4000.0	4000.0	4375.0	0.0	0.0	IS Fr. 1735 to 1805 hr
SF 60	Clock(hrs)	12 hr	12 hr	12 hr			SF Fr. 1805 to 1905 hr
FS 90	Depth(ft )	4770.0	4770.0	4791.0	0.0	0.0	FS Fr. 1905 to 2035 hr

	Field	1	2	3	4	
A. Init Hydro	2461.0	2451.0	0.0	0.0	0.0	T STARTED 1540 hr
B. First Flow	39.0	36.0	0.0	0.0	0.0	T ON BOTM hr
B1. Final Flow	39.0	36.0	0.0	0.0	0.0	T OPEN 1705 hr
C. In Shut-in	177.0	182.0	0.0	0.0	0.0	T PULLED 2035 hr
D. Init Flow	39.0	36.0	0.0	0.0	0.0	T OUT 2150 hr
E. Final Flow	39.0	36.0	0.0	0.0	0.0	
F. Fl Shut-in	1316.0	1323.0	0.0	0.0	0.0	TOOL DATA-----
G. Final Hydro	2390.0	2389.0	0.0	0.0	0.0	Tool Wt. 0.00 lbs
Inside/Outside	I	I	O			Wt Set On Packer 30000.00 lbs
						Wt Pulled Loose 38000.00 lbs
						Initial Str Wt 55000.00 lbs
						Unseated Str Wt 55000.00 lbs
						Bot Choke 0.75 in
						Hole Size 7.88 in
						D Col. ID 2.25 in
						D. Pipe ID 3.80 in
						D.C. Length 240.00 ft
						D.P. Length 4555.00 ft

RECOVERY

Tot Fluid 30.00 ft of 30.00 ft in DC and 0.00 ft in DP  
 450.00 ft of Gas in pipe  
 30.00 ft of Gassy mud - 10% gas, 90% mud  
 0.00 ft of  
 0.00 ft of  
 0.00 ft of  
 0.00 ft of  
 0.00 ft of  
 0.00 ft of

SALINITY 0.00 P.P.M. A.P.I. Gravity 0.00

BLOW DESCRIPTION

Initial Blow -  
 Weak, building to 12" fair blow

Final Blow -  
 Weak, building to 5" fair blow

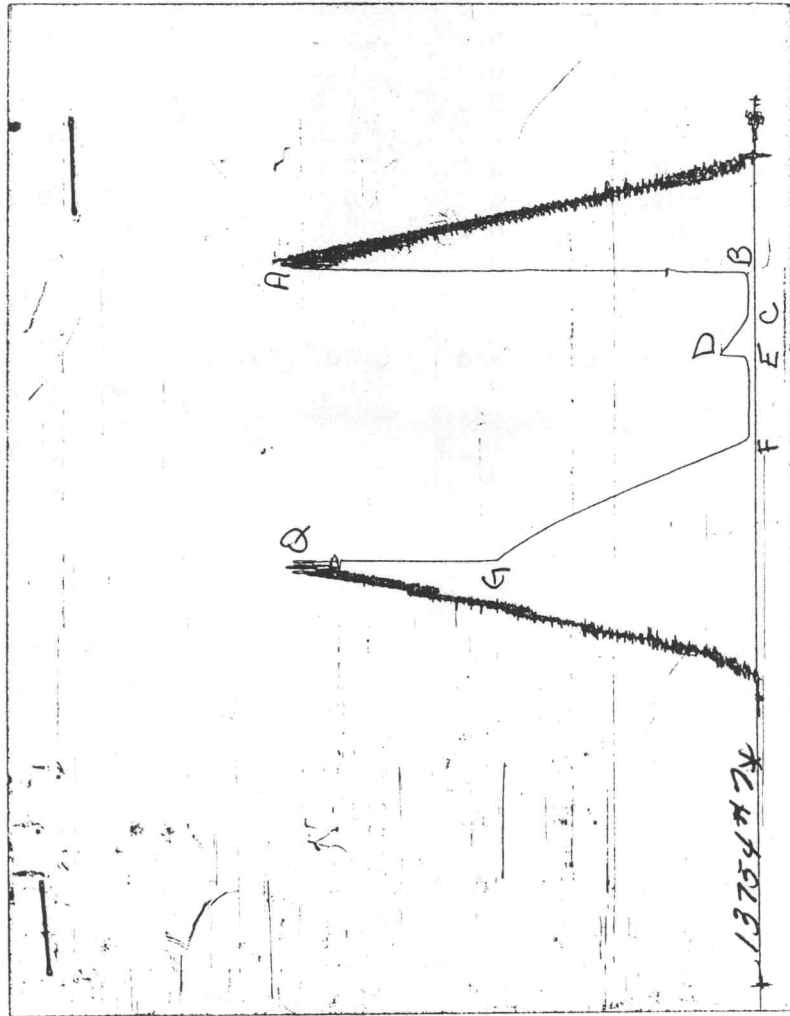
SAMPLES:  
 SENT TO:

MUD DATA-----

Mud Type	Chemical
Weight	9.30 lb/cf
Vis.	56.00 S/L
W.L.	12.00 in3
F.C.	0.00 in
Mud Drop	
Amt. of fill	0.00 ft
Btm. H. Temp.	119.00 F
Hole Condition	
% Porosity	0.00
Packer Size	6.75 in
No. of Packers	2
Cushion Amt.	0.00
Cushion Type	
Reversed Out	
Tool Chased	
Tester	Dan Bangle
Co. Rep.	Doug McGinness
Contr.	Pickrell
Rig #	1
Unit #	
Pump T.	

Test Successful: Y

CHART PAGE



This is an actual photograph of recorder chart

**CALCULATED RECOVERY ANALYSIS - DRILL COLLARS**

DST # 7

TICKET # 8541

SAMPLE #	TOTAL FEET	GAS		OIL		WATER		MUD	
		%	FEET	%	FEET	%	FEET	%	FEET
1	30	10	3	0	0	0	0	90	27
2			0	0	0	0	0		0
3			0	0	0	0	0		0
4			0	0	0	0	0		0
5			0	0	0	0	0		0
<b>TOTAL</b>	<b>30</b>	<b>10.00</b>	<b>3</b>	<b>0.00</b>	<b>0</b>	<b>0.00</b>	<b>0</b>	<b>90</b>	<b>27</b>

HRS OPE BBL/DAY

BBL OIL= 0  
 BBL WAT 0  
 BBL MUD 0.13203  
 BBL GAS 0.01467

\* 1.50 0  
 \* 0 0

