

API #15-095-21700

# Superior Testers Enterprises, Inc.

## ORIGINAL

R.R. 3, Box 295B, Great Bend, Kansas 67530

(316) 792-6902

Date 1-7-1995 Location C-MW/4 1-28<sup>S</sup>-7<sup>N</sup> Elevation 1511 G.L. County KANSAS

Company AMERICAN ENERGIES CORPORATION Number of Copies 5

Charts Mailed to 155 NORTH MARKET SUITE 710 WICHITA KANSAS 67202

Drilling Contractor Duke Drilling Rig #1

Length Drill Pipe 3859 I.D. Drill Pipe 4.380 Tool Joint Size 4 1/2" X H.

Length Weight Pipe NONE I.D. Weight Pipe NONE Tool Joint Size NONE

Length Drill Collars NONE I.D. Drill Collars NONE Tool Joint Size NONE

Top Packer Depth 3882 Bottom Packer Depth 3887 Number of Packers 2 Packer Size 6 3/4"

TESTED FROM 3887 TO 3900 ANCHOR LENGTH 13 TOTAL DEPTH 3900 Hole Size 7 7/8

LEASE & WELL NO. BERGMAN #2 FORMATION TESTED Mississippi TEST NO. 1

Mud Weight 9.7 Viscosity 50 Water Loss --- Chlorides - Pits --- D.S.T. 56000

Maximum Temp. 117 °F Initial Hydrostatic Pressure (A) 1936 P.S.I. Final Hydrostatic Pressure (H) 1914 P.S.I.

Tool Open I.F.P. from 10:15 Pm to 10:45 Pm 30 min

Tool Closed I.C.I.P. from 10:45 Am to 11:30 Pm 45 min

Tool Open F.F.P. from 11:30 Pm to 12:00 Am 30 min

Tool Closed F.C.I.P. from 12:00 Am to 12:45 Am 45 min

Initial Blow FAIR blow built to the bottom of a 5 Gallon bucket in 1 1/2 minutes

Final Blow WEAK building blow built to 7 1/2 inches into the water

Total Feet Recovered 200 Gravity of Oil \_\_\_\_\_ Corrected

350 Feet of Gas in the Pipe % Gas \_\_\_\_\_ % Oil \_\_\_\_\_ % Mud \_\_\_\_\_ % Water \_\_\_\_\_

20 Feet of watery mud 0% Gas 0% Oil 41 % Mud 59 % Water

90 Feet of SLIGHTLY MUDDY WATER 0% Gas 0% Oil 8 % Mud 92 % Water

90 Feet of VERY SLIGHTLY MUDDY WATER 0% Gas 0% Oil 2 % Mud 98 % Water

\_\_\_\_\_ Feet of \_\_\_\_\_ % Gas \_\_\_\_\_ % Oil \_\_\_\_\_ % Mud \_\_\_\_\_ % Water

\_\_\_\_\_ Feet of \_\_\_\_\_ % Gas \_\_\_\_\_ % Oil \_\_\_\_\_ % Mud \_\_\_\_\_ % Water

\_\_\_\_\_ Feet of \_\_\_\_\_ % Gas \_\_\_\_\_ % Oil \_\_\_\_\_ % Mud \_\_\_\_\_ % Water

\_\_\_\_\_ Feet of \_\_\_\_\_ % Gas \_\_\_\_\_ % Oil \_\_\_\_\_ % Mud \_\_\_\_\_ % Water

\_\_\_\_\_ Feet of \_\_\_\_\_ % Gas \_\_\_\_\_ % Oil \_\_\_\_\_ % Mud \_\_\_\_\_ % Water

Remarks \_\_\_\_\_

Extra Equipment - Jars YES Safety Joint YES Extra Packer NONE Straddle NONE Hook Wall NONE

Top Recorder No. 11088 Clock No. 47441 Depth 3894 Cir. Sub NONE Sampler NONE

Bottom Recorder No. 11087 Clock No. 47442 Depth 3897 Insurance NONE

Price of Job \_\_\_\_\_

Tool Operator Jane Judig

Approved By \_\_\_\_\_

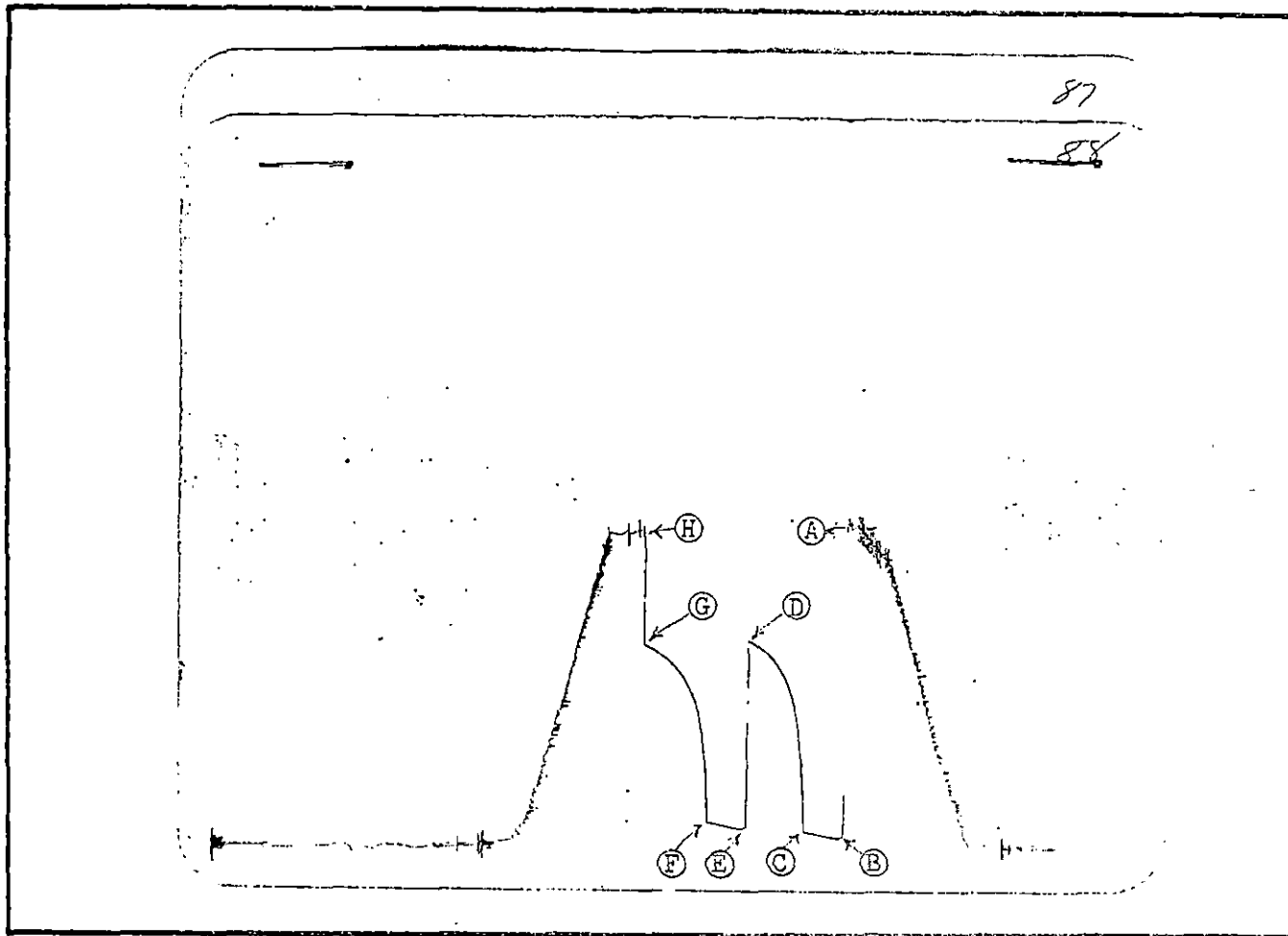
No 11188

from [B] <u>44</u> P.S.I. to [C] <u>89</u> P.S.I.
[D] <u>1263</u> P.S.I.
from [E] <u>111</u> P.S.I. to [F] <u>144</u> P.S.I.
[G] <u>1241</u> P.S.I.

Superior Testers Enterprises, Inc. shall not be liable for damage of any kind to the property or personnel of the one for whom a test is made, or for any loss suffered or sustained, directly or indirectly, through the use of its equipment, or its statements or opinion concerning the results of any test. Tools lost or damaged in the hole shall be paid for at cost by the party for whom the test is made.

ADT # 15-095-21700

API # 15-095-21700



This is an actual photograph of recorder chart.

POINT	PRESSURE		
	FIELD READING	OFFICE READING	
(A) Initial Hydrostatic Mud .....	<u>1936</u>	<u>1980</u>	P.S.I.
(B) First Initial Flow Pressure .....	<u>44</u>	<u>52</u>	P.S.I.
(C) First Final Flow Pressure .....	<u>89</u>	<u>93</u>	P.S.I.
(D) Initial Closed-in Pressure .....	<u>1263</u>	<u>1252</u>	P.S.I.
(E) Second Initial Flow Pressure .....	<u>111</u>	<u>111</u>	P.S.I.
(F) Second Final Flow Pressure .....	<u>144</u>	<u>147</u>	P.S.I.
(G) Final Closed-in Pressure .....	<u>1241</u>	<u>1228</u>	P.S.I.
(H) Final Hydrostatic Mud .....	<u>1914</u>	<u>1930</u>	P.S.I.

SUPERIOR TESTERS ENTERPRISES INC.

WELL IDENTIFICATION DATA

COMPANY : AMERICAN ENERGIES CORP. WELL NAME : BERGMAN #2  
ADDRESS : 155 N.MARKET #710 LOCATION : C-N/W 1/4 1-28-1995  
STATE & COUNTY : KANSAS.KINGMAN FIELD :  
ELEV.(GR) : 1511 (KB) : 1519 TEST DATE : 1-7-1995

EQUIPMENT AND HOLE DATA

FORMATION TESTED : MISSISSIPPI DRILL PIPE LENGTH(ft) : 3859  
TEST INT. KB : 3887 to 3900 DRILL PIPE O.D.(in) : 3.82  
ANCHOR LENGTH(ft) : 13 WEIGHT PIPE LENGTH(ft) :  
TYPE OF TEST : Conventional WEIGHT PIPE ID : 2.75  
TOTAL DEPTH(ft-kg) : 3900 DRILL COLLAR LENGTH(ft) :  
MAIN HOLE SIZE(in) : 7 7/8 DRILL COLLAR I.D.(in) : 2.259  
MUD WEIGHT : 9.3 TOP PACKER DEPTH(kb) : 3882  
MUD VISCOSITY : 50 BOTTOM PACKER DEPTH(kb) : 3887  
MUD CHLORIDES : DUAL PACKERS :  
SURFACE CHOKER : 3/4 PACKER SIZE(in) : 6 3/4  
BOTTOM CHOKER(in) : 3/4 PACKER HOLD : Yes  
TOOL SIZE(O.D.) : 5 1/2 TOOL PLUG : No  
TOOL JOINT SIZE(F.H.) : 4 1/2 REVERSED OUT : No  
RESERVOIR TEMPERATURE(F) : 117 TEST TICKET NUMBER : 11188

EXTRA EQUIPMENT : -JARS -SAFETY JOINT

ELEMENT SERIAL NO. : 11088  
RANGE : 0 - 4400 CLOCK RANGE : 12 HOURS  
CAL. EQU. : 1102.93 \* Defl. + 4.88

SURFACE BLOW

1st Opening : FAIR BLOW BUILT TO BOTTOM OF THE BUCKET IN 90 SEC.  
2nd Opening : WEAK BLOW BUILT TO 7 1/2 INCHES INTO THE WATER

RECOVERY

Recovered 350 feet of GAS IN THE PIPE  
Recovered 20 feet of WATERY MUD  
Recovered 90 feet of SLIGHTLY MUDDY WATER 8%MUD 92%WATER  
Recovered 90 feet of SLIGHTLY MUDDY WATER 2%MUD 98%WATER CHLORIDE 56000

REMARKS :

WITNESSED BY : STEVE MILLER TOOL OPERATOR : GENE BUDIG

INTERPRETATION BY : SUPERIOR TESTERS ENTERPRISES INC.

SUPERIOR TESTERS ENTERPRISES INC.

SUBSURFACE PRESSURE MEASUREMENTS

COMPANY : AMERICAN ENERGIES CORP. WELL NAME : BERGMAN #2  
 DATE OF TEST : 1-7-1995 LOCATION : C-N/W 1/4 1-28-1995  
 DEPTH : 3894.0 SERIAL NO. : 11088

COMMENTS	TIME min	DEFL in	PRESSURE PSIG		
			----- CALC	CORR	CORRECTED
TEST NO.:1					
Depth : 3894.0 ft-kb					
1ST HYDROSTATIC	0.0	1.790	1979.13	1.37	1980.49
10:15 1ST FLOW	0.0	.047	56.72	-4.33	52.38
- 10:20	5.0	.049	58.92	-4.31	54.61
- 10:25	10.0	.053	63.34	-4.26	59.07
- 10:30	15.0	.061	72.16	-4.17	67.99
- 10:35	20.0	.070	82.08	-4.07	78.02
- 10:40	25.0	.077	89.81	-3.99	85.82
- 10:45	30.0	.084	97.53	-3.70	93.82
10:45 END FLOW	0.0	.084	97.53	-3.90	93.62
- 10:48	3.0	.516	573.99	.91	574.91
- 10:51	6.0	.700	776.93	.79	777.73
- 10:54	9.0	.797	883.92	.73	884.65
- 10:57	12.0	.869	963.33	.68	964.01
- 11:00	15.0	.923	1022.88	.65	1023.53
- 11:03	18.0	.964	1068.10	.62	1068.73
- 11:06	21.0	.997	1104.50	.60	1105.10
- 11:09	24.0	1.026	1136.49	.65	1137.13
- 11:12	27.0	1.046	1158.55	.68	1159.23
- 11:15	30.0	1.070	1185.02	.73	1185.74
- 11:18	33.0	1.087	1203.77	.76	1204.52
- 11:21	36.0	1.102	1220.31	.79	1221.10
- 11:24	39.0	1.116	1235.75	.81	1236.56
- 11:27	42.0	1.127	1247.88	.83	1248.71
- 11:28	43.0	1.130	1251.19	.84	1252.03
11:28 1ST SHUT-IN	0.0	1.130	1251.19	.84	1252.03
11:28 2ND FLOW	0.0	.100	115.17	-3.72	111.45
- 11:33	5.0	.102	117.38	-3.70	113.68
- 11:38	10.0	.106	121.79	-3.65	118.14
- 11:43	15.0	.110	126.20	-3.60	122.60
- 11:48	20.0	.117	133.92	-3.52	130.40
- 11:53	25.0	.124	141.64	-3.44	138.20
- 11:58	30.0	.129	147.16	-3.38	143.78
- 12:00	32.0	.132	150.47	-3.35	147.12
12:00 END FLOW	0.0	.132	150.47	-3.35	147.12
- 12:03	3.0	.549	610.39	.89	611.28
- 12:06	6.0	.690	765.90	.80	766.70
- 12:09	9.0	.787	872.89	.74	873.62
- 12:12	12.0	.841	932.44	.70	933.15
- 12:15	15.0	.884	979.87	.68	980.55
- 12:18	18.0	.921	1020.68	.65	1021.33

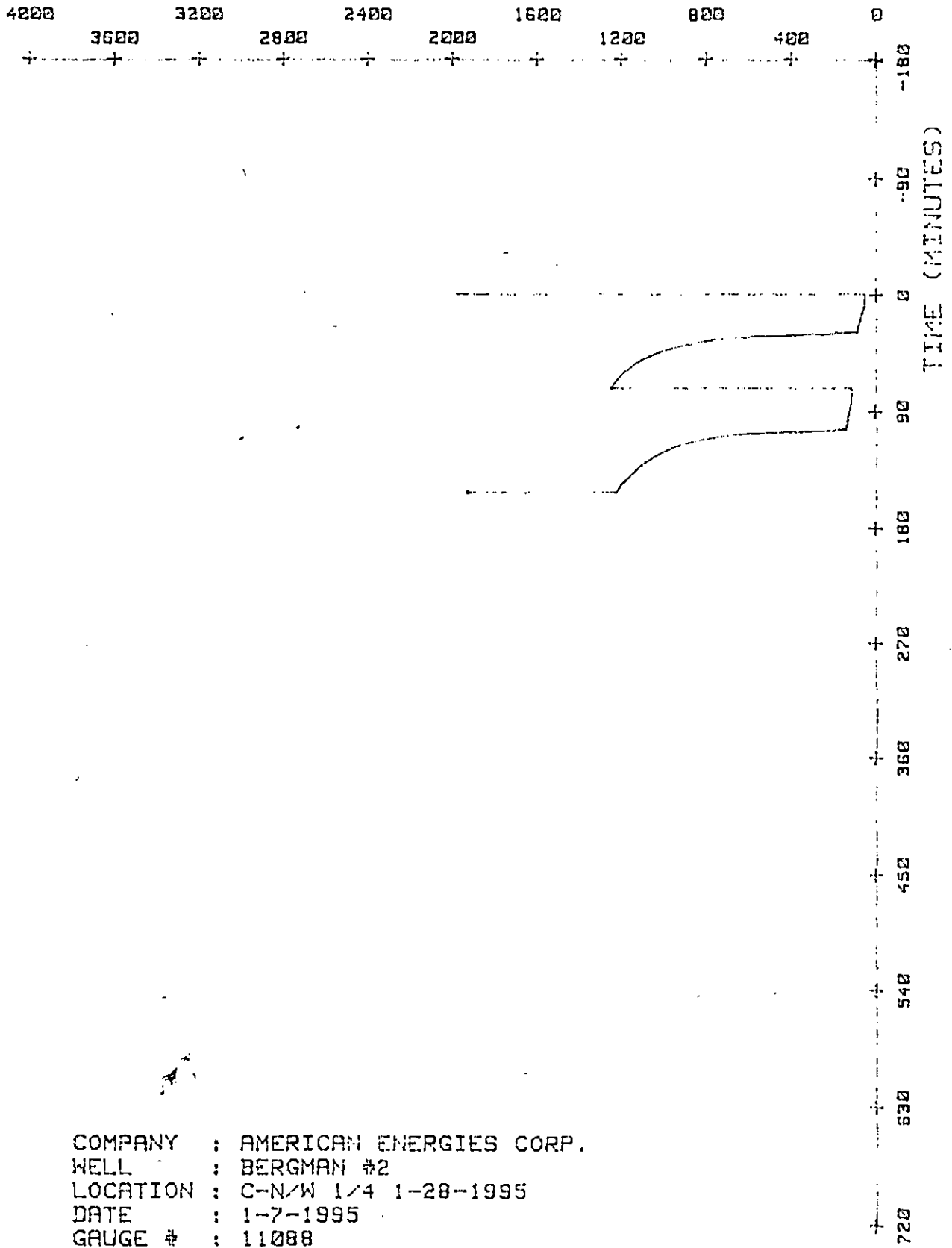
SUPERIOR TESTERS ENTERPRISES INC.

SUBSURFACE PRESSURE MEASUREMENTS

COMPANY : AMERICAN ENERGIES CORP. WELL NAME : BERGMAN #2  
 DATE OF TEST : 1-7-1995 LOCATION : C-N/W 1/4 1-28-1995  
 DEPTH : 3894.0 SERIAL NO. : 11088

COMMENTS	TIME min	DEFL in	PRESSURE PSIG		
			CALC	CORR	CORRECTED
TEST NO.: 1					
- 12:21	21.0	.954	1057.08	.63	1057.71
- 12:24	24.0	.980	1085.75	.61	1086.36
- 12:27	27.0	1.002	1110.02	.60	1110.62
- 12:30	30.0	1.021	1130.97	.64	1131.61
- 12:33	33.0	1.037	1148.62	.67	1149.29
- 12:36	36.0	1.053	1166.27	.70	1166.96
- 12:39	39.0	1.071	1186.12	.73	1186.85
- 12:42	42.0	1.087	1203.77	.76	1204.52
- 12:45	45.0	1.098	1215.90	.78	1216.68
- 12:48	48.0	1.109	1228.03	.80	1228.83
-12:48 2ND SHUT-IN	0.0	1.109	1228.03	.80	1228.83
-2ND HYDROSTATIC	0.0	1.745	1929.49	1.39	1930.88

PRESSURE ( P S I G )



COMPANY : AMERICAN ENERGIES CORP.  
WELL : BERGMAN #2  
LOCATION : C-N/W 1/4 1-28-1995  
DATE : 1-7-1995  
GAUGE # : 11088