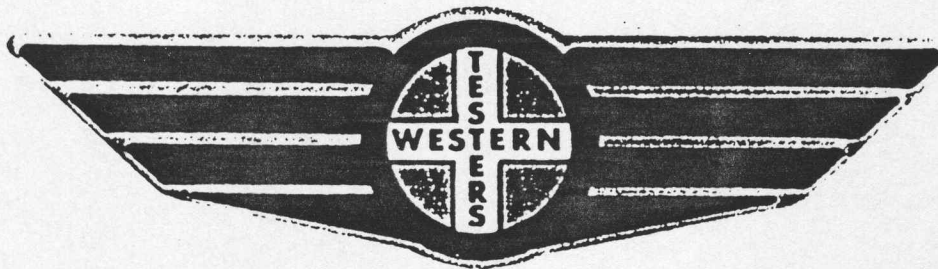


# FORMATION TEST REPORT



Home Office:

Wichita, Kansas 67201

P.O. Box 1599

Phone (316) 262-5861

COMPANY DAVID W. CLOTHIER LEASE & WELL NO. SEELY # 1-12 SEC. 12 TWP. 29S RGE. 1W TEST NO. 1 DATE 7/10/88

WESTERN TESTING CO. INC.  
SUBSURFACE PRESSURE SURVEY

DATE : 7-10-88  
CUSTOMER : DAVID W. CLOTHIER  
WELL : #1-12 TEST: 1  
ELEVATION : 1289 KB  
SECTION : 12  
RANGE : 1W COUNTY : SEDGWICK  
GAUGE SN# : 10979 RANGE : 4100  
TICKET : 14055  
LEASE : SEELY  
GEOLOGIST : D CLOTHIER  
FORMATION : MISSISSIPPI  
TOWNSHIP : 29S  
STATE : KANSAS  
CLOCK : 12

INTERVAL FROM : 3305 TO : 3315 TOTAL DEPTH : 3315  
DEPTH OF SELECTIVE ZONE :  
PACKER DEPTH : 3300 SIZE : 6.63  
PACKER DPTH : 3305 SIZE : 6.63  
PACKER DEPTH : SIZE :  
PACKER DEPTH : SIZE :

DRILLING CON. : DUKE RIG 3  
MUD TYPE : CHEMICAL VISCOSITY : 40  
WEIGHT : 9.9 WATER LOSS (CC) : 12  
CHLORIDES (PPM) : 2000  
JARS-MAKE : - SERIAL NUMBER :  
DID WELL FLOW ? : GAS REVERSED OUT ? : NO

DRILL COLLAR LENGTH : 60 FT I.D. inch : 2.25  
WEIGHT PIPE LENGTH : 300 FT I.D. inch : 2.70  
DRILL PIPE LENGTH : 2923 FT I.D. inch : 3.80  
TEST TOOL LENGTH : 22 FT TOOL SIZE : 5.50  
ANCHOR LENGTH : 10 FT ANCHOR SIZE : 5.50  
SURFACE CHOKE SIZE : .75 IN BOTTOM CHOKE SIZE : .75  
MAIN HOLE SIZE : 7.875 IN TOOL JOINT SIZE : 4.5 XH

BLOW COMMENT #1 : STRONG BLOW THROUGHOUT TEST.  
BLOW COMMENT #2 : GAS TO SURFACE IN 10 MINUTES-SEE ATTACHED FLOW CHART.  
BLOW COMMENT #3 :  
BLOW COMMENT #4 :

RECOVERED : 30 FT OF: GAS CUT MUD / WITH VERY SLIGHT SHOW OF OIL

CHLORIDES: 2200 PPM

Total Barrels Fluid = 0.15  
Total Fluid Prod Rate = 2.83 BFPD  
Indicated Oil Rate = 0.19 BOPD  
Indicated Wtr Rate = 0.28 BWPD

REMARK 1 :  
REMARK 2 :  
REMARK 3 :  
REMARK 4 :

SET PACKER(S) : 4:45 AM

TIME STARTED OFF BOTTOM : 7:45 AM

WELL TEMPERATURE : 105

INITIAL HYDROSTATIC PRESSURE

(A) 1816

INITIAL FLOW PERIOD MIN: 30

(B) 80 PSI TO (C) : 68

INITIAL CLOSED IN PERIOD MIN: 48

(D) 1503

FINAL FLOW PERIOD MIN: 45

(E) 77 PSI TO (F) : 50

FINAL CLOSED IN PERIOD MIN: 63

(G) 1429

FINAL HYDROSTATIC PRESSURE

(H) 1782

GAS FLOW REPORT

Date : 7-10-88	Ticket # : 14055
Customer : DAVID W. CLOTHIER	Lease : SEELY
Well : #1-12      Test : 1	Geologist : CLOTHIER
Elevation (KB) : 1289      Formation : MISSISSIPPI	
Section : 12      Township : 29S	
Range : 1W      County : SEDGWICK	State : KANSAS
Gauge SN # : 10979      Range : 4100	Clock : 12

TIME GAUGE (MIN)	TESTER TYPE	ORFICE SIZE	PRESSURE (PSI)	FLOW DESCRIPTION
PRE FLOW =====				
10	MERLA	1/2"	7	94500 CFPD
20			8	101000 CFPD
30			8	101000 CFPD
SECOND FLOW =====				
40	MERLA	1/2"	10	116000 CFPD
50			8	101000 CFPD
60			7	94500 CFPD
70			7	94500 CFPD
75			6	86300 CFPD

Gas Bottle SN # : 12 A  
 Date Bottle Filled : 7-10-88  
 Date to be Invoiced :

WESTERN TESTING CO. INC.  
WICHITA KANSAS

Pressure Transient Report  
-----

COMPANY : DAVID W. CLOTHIER  
RIG : SEDGWICK-KANSAS  
FIELD : SEELY  
WELL : #1-12  
DATE : 7-10-88  
GAUGE NO : 10979

OPERATIONAL COMMENTS

COMPANY : DAVID W. CLOTHIER  
 WELL : #1-12  
 GAUGE # : 10979  
 DATE : 10/ 7/88

FIELD : SEELY  
 JOB # : 14055  
 DEPTH : 3315  
 TEST :

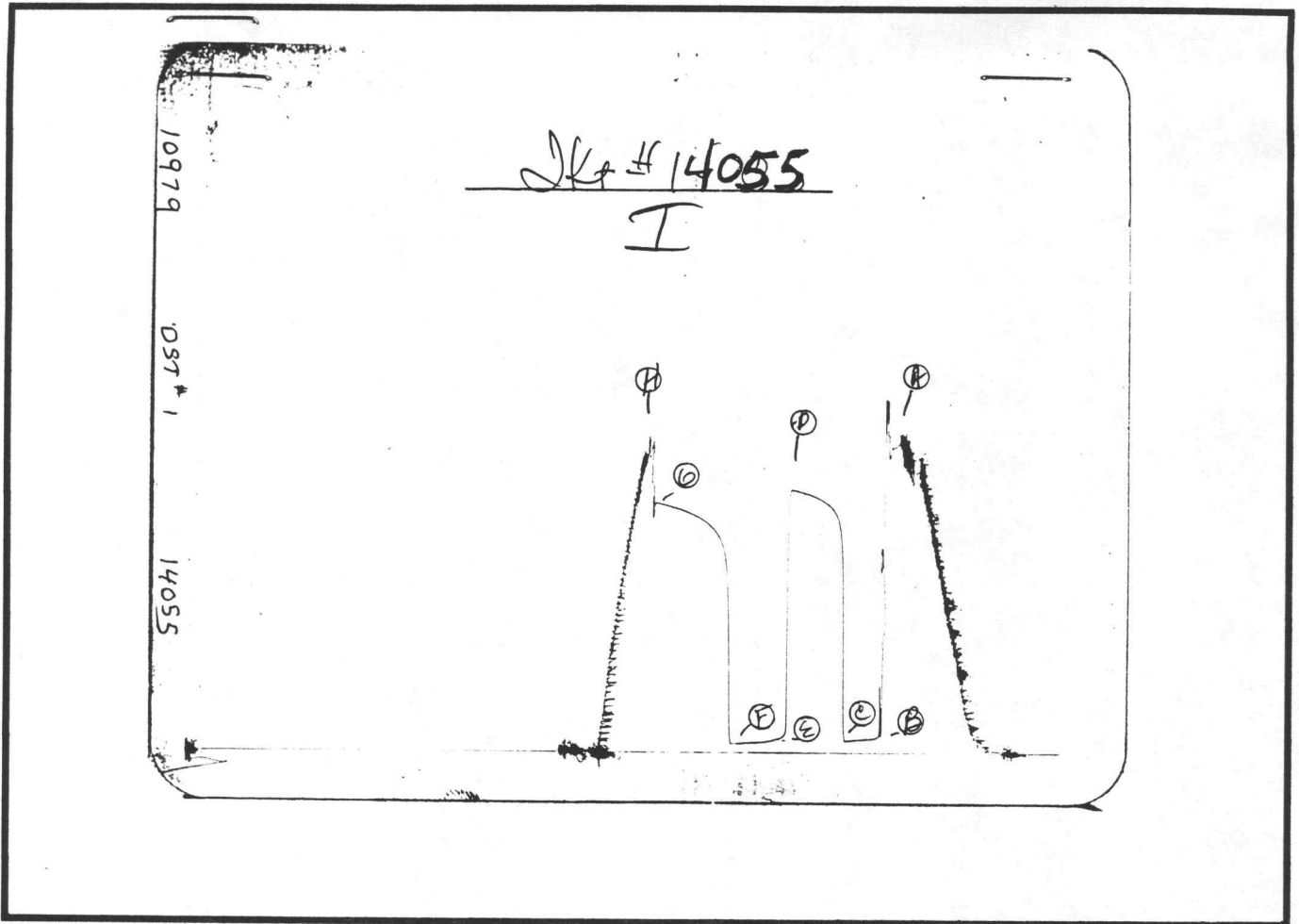
DATA No.	REAL TIME HR:MN:SS	ELAPSE TIME DELTA HOURS	PRESSURE PSIG	TEMP DEG F	DELTA P Pi-P(i-1)
1	4:45: 0	0.000	80.000	105.00	0.000
2	4:49:59	0.083	80.000	105.00	0.000
3	4:55: 0	0.167	80.000	105.00	0.000
4	5: 0: 0	0.250	75.000	105.00	-5.000
5	5: 4:59	0.333	74.000	105.00	1.000
6	5:10: 0	0.417	70.000	105.00	-4.000
7	5:15: 0	0.500	68.000	105.00	-2.000
8	5:18: 0	0.550	481.000	105.00	413.000
9	5:21: 0	0.600	1139.000	105.00	658.000
10	5:24: 0	0.650	1324.000	105.00	185.000
11	5:27: 0	0.700	1374.000	105.00	50.000
12	5:30: 0	0.750	1405.000	105.00	31.000
13	5:33: 0	0.800	1422.000	105.00	17.000
14	5:36: 0	0.850	1436.000	105.00	14.000
15	5:39: 0	0.900	1449.000	105.00	13.000
16	5:42: 0	0.950	1459.000	105.00	10.000
17	5:45: 0	1.000	1469.000	105.00	10.000
18	5:48: 0	1.050	1479.000	105.00	10.000
19	5:51: 0	1.100	1482.000	105.00	3.000
20	5:54: 0	1.150	1485.000	105.00	3.000
21	5:57: 0	1.200	1488.000	105.00	3.000
22	6: 0: 0	1.250	1500.000	105.00	12.000
23	6: 3: 0	1.300	1503.000	105.00	3.000
24	6: 4: 0	1.317	77.000	105.00	-1426.000
25	6: 7:59	1.383	77.000	105.00	0.000
26	6:13: 0	1.467	70.000	105.00	-7.000
27	6:18: 0	1.550	62.000	105.00	-8.000
28	6:22:59	1.633	58.000	105.00	-4.000
29	6:28: 0	1.717	56.000	105.00	-2.000
30	6:33: 0	1.800	54.000	105.00	-2.000
31	6:37:59	1.883	52.000	105.00	-2.000
32	6:43: 0	1.967	51.000	105.00	-1.000
33	6:48: 0	2.050	50.000	105.00	-1.000
34	6:51: 0	2.100	512.000	105.00	462.000
35	6:53:59	2.150	973.000	105.00	461.000
36	6:57: 0	2.200	1151.000	105.00	178.000
37	7: 0: 0	2.250	1218.000	105.00	67.000
38	7: 3: 0	2.300	1257.000	105.00	39.000
39	7: 6: 0	2.350	1284.000	105.00	27.000
40	7: 8:59	2.400	1304.000	105.00	20.000
41	7:12: 0	2.450	1322.000	105.00	18.000
42	7:15: 0	2.500	1335.000	105.00	13.000
43	7:18: 0	2.550	1346.000	105.00	11.000
44	7:21: 0	2.600	1359.000	105.00	13.000
45	7:24: 0	2.650	1369.000	105.00	10.000
46	7:26:59	2.700	1378.000	105.00	9.000
47	7:30: 0	2.750	1387.000	105.00	9.000
48	7:33: 0	2.800	1395.000	105.00	8.000
49	7:36: 0	2.850	1402.000	105.00	7.000
50	7:39: 0	2.900	1408.000	105.00	6.000
51	7:41:59	2.950	1413.000	105.00	5.000
52	7:45: 0	3.000	1420.000	105.00	7.000

COMPANY : DAVID W. CLOTHIER  
WELL : #1-12  
GAUGE # : 10979  
DATE : 10/ 7/88

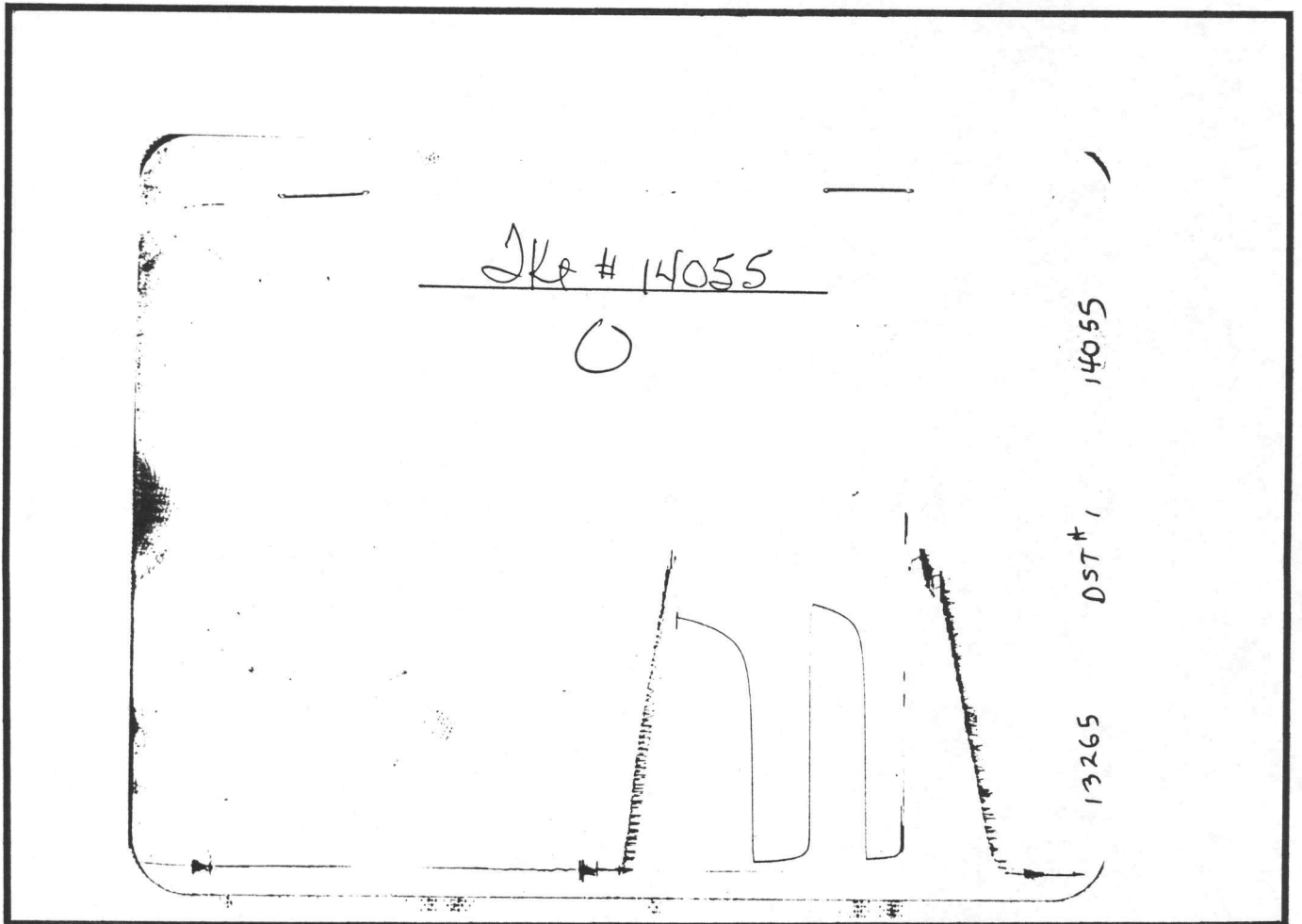
FIELD : SEELY  
JOB # : 14055  
DEPTH : 3315  
TEST :

DATA No.	REAL TIME HR:MN:SS	ELAPSE TIME DELTA HOURS	PRESSURE PSIG	TEMP DEG F	DELTA P Pi-P(i-1)
53	7:48: 0	3.050	1426.000	105.00	6.000
54	7:51: 0	3.100	1429.000	105.00	3.000

WESTERN TESTING CO. INC.



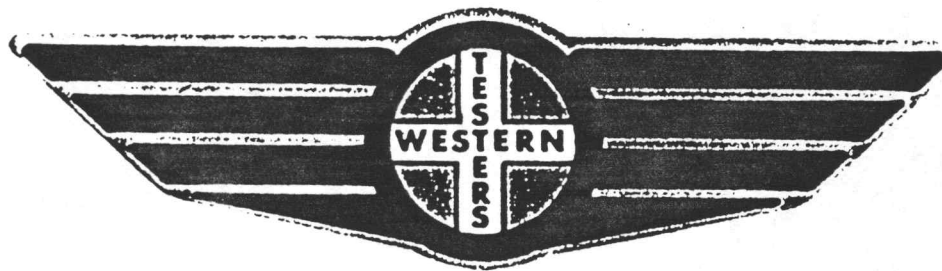
Inside Recorder



Outside Recorder

JAY BOY

# FORMATION TEST REPORT



Home Office:

Wichita, Kansas 67201

P.O. Box 1599

Phone (316) 262-5861

COMPANY DAVID W. CLOTHIER LEASE & WELL NO. SEEM. # 1-12 SEC. 12 TWP. 29S RGE. 1W TEST NO. 2 DATE 7/11/88

WESTERN TESTING CO. INC.  
SUBSURFACE PRESSURE SURVEY

DATE : 7-11-88  
CUSTOMER : DAVID W. CLOTHIER  
WELL : #1-12 TEST: 2  
ELEVATION : 1289 KB  
SECTION : 12  
RANGE : 1W COUNTY : SEDGWICK  
GAUGE SN# : 10979 RANGE : 4100  
TICKET : 14056  
LEASE : SEELY  
GEOLOGIST : D CLOTHIER  
FORMATION : MISSISSIPPI  
TOWNSHIP : 29S  
STATE : KANSAS  
CLOCK : 12

INTERVAL FROM : 3315 TO : 3325 TOTAL DEPTH : 3325

DEPTH OF SELECTIVE ZONE :  
PACKER DEPTH : 3310 SIZE : 6.63  
PACKER DEPTH : 3315 SIZE : 6.63  
PACKER DEPTH : SIZE :  
PACKER DEPTH : SIZE :

DRILLING CON. : DUKE RIG 3  
MUD TYPE : CHEMICAL VISCOSITY : 43  
WEIGHT : 9.8 WATER LOSS (CC) : 14.  
CHLORIDES (PPM) : 2000  
JARS-MAKE : - SERIAL NUMBER : -  
DID WELL FLOW ? : GAS REVERSED OUT ? : NO

DRILL COLLAR LENGTH : 60 FT I.D. inch : 2.25  
WEIGHT PIPE LENGTH : 300 FT I.D. inch : 2.70  
DRILL PIPE LENGTH : 2933 FT I.D. inch : 3.80  
TEST TOOL LENGTH : 22 FT TOOL SIZE : 5.50  
ANCHOR LENGTH : 10 FT ANCHOR SIZE : 5.50  
SURFACE CHOKE SIZE : .75 IN BOTTOM CHOKE SIZE : .75  
MAIN HOLE SIZE : 7.875 IN TOOL JOINT SIZE : 4.5 XH

BLOW COMMENT #1 : STRONG BLOW THROUGHOUT TEST.  
BLOW COMMENT #2 : GAS TO SURFACE IN 8 MINUTES-SEE ATTACHED FLOW CHART.  
BLOW COMMENT #3 :  
BLOW COMMENT #4 :

RECOVERED : 130 FT OF: VERY SLI. OIL & GAS CUT MUDDY SALT WTR  
5% OIL-95% MUDDY SALT WATER  
.8 RES. @ 78 DEG.F.  
CHLORIDES: 65000 PPM

Total Barrels Fluid = 0.79  
Total Fluid Prod Rate = 12.65 BFPD  
Indicated Oil Rate = 0.63 BOPD  
Indicated Wtr Rate = 6.13 BWPD

REMARK 1 :  
REMARK 2 :  
REMARK 3 :  
REMARK 4 :

SET PACKER(S) : 1:15 AM  
WELL TEMPERATURE : 106  
INITIAL HYDROSTATIC PRESSURE (A) 1816  
INITIAL FLOW PERIOD MIN: 30 (B) 77 PSI TO (C) : 72  
INITIAL CLOSED IN PERIOD MIN: 45 (D) 1406  
FINAL FLOW PERIOD MIN: 60 (E) 80 PSI TO (F) : 80  
FINAL CLOSED IN PERIOD MIN: 96 (G) 1329  
FINAL HYDROSTATIC PRESSURE (H) 1719

## GAS FLOW REPORT

Date : 7-11-88		Ticket # : 14056
Customer : DAVID W. CLOTHIER		Lease : SEELY
Well : #1-12	Test : 2	Geologist : D CLOTHIER
Elevation (KB) : 1289	Formation : MISSISSIPPI	
Section : 12	Township : 29S	
Range : 1W	County : SEDGWICK	State : KANSAS
Gauge SN # : 10979	Range : 4100	Clock : 12

TIME GAUGE (MIN)	TESTER TYPE	ORFICE SIZE	PRESSURE (PSI)	FLOW DESCRIPTION
---------------------	-------------	----------------	-------------------	------------------

PRE FLOW  
=====

10	MERLA	1/2"	8	101000 CFPD
20			10	116000 CFPD
30			10	116000 CFPD

SECOND FLOW  
=====

40	MERLA	1/2"	12	129000 CFPD
50			10	116000 CFPD
60			8	101000 CFPD
70			7	94500 CFPD
80			6	86300 CFPD
90			6	86300 CFPD

Gas Bottle SN # : 15 A  
 Date Bottle Filled : 7-11-88  
 Date to be Invoiced :

WESTERN TESTING CO. INC.  
WICHITA-KANSAS

Pressure Transient Report

COMPANY : DAVID W. CLOTHIER  
RIG : SEDGWICK-KANSAS  
FIELD : SEELY  
WELL : #1-12  
DATE : 7-11-88  
GAUGE NO : 10979

OPERATIONAL COMMENTS

COMPANY : DAVID W. CLOTHIER  
 WELL : #1-12  
 GAUGE # : 10979  
 DATE : 11/ 7/88

FIELD : SEELY  
 JOB # : 14056  
 DEPTH : 3325  
 TEST :

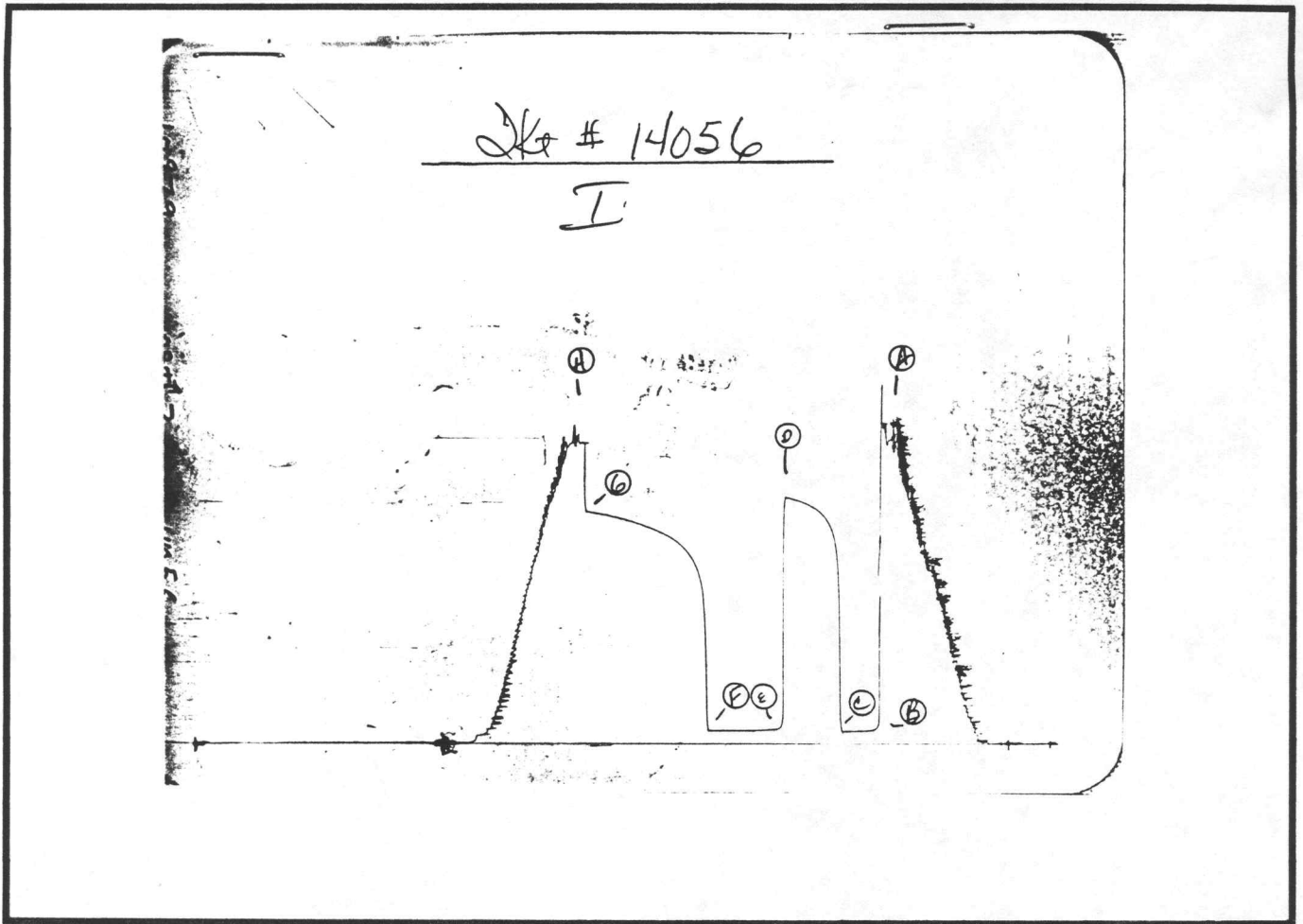
DATA No.	REAL TIME HR:MN:SS	ELAPSE TIME DELTA HOURS	PRESSURE PSIG	TEMP DEG F	DELTA P Pi-P(i-1)
1	1:15:0	0.000	77.000	106.00	0.000
2	1:19:59	0.083	77.000	106.00	0.000
3	1:25:0	0.167	77.000	106.00	0.000
4	1:30:0	0.250	74.000	106.00	-3.000
5	1:34:59	0.333	73.000	106.00	-1.000
6	1:40:0	0.417	72.000	106.00	-1.000
7	1:45:0	0.500	72.000	106.00	0.000
8	1:48:0	0.550	848.000	106.00	776.000
9	1:51:0	0.600	1129.000	106.00	281.000
10	1:54:0	0.650	1219.000	106.00	90.000
11	1:57:0	0.700	1263.000	106.00	44.000
12	2:0:0	0.750	1297.000	106.00	34.000
13	2:3:0	0.800	1322.000	106.00	25.000
14	2:6:0	0.850	1338.000	106.00	16.000
15	2:9:0	0.900	1351.000	106.00	13.000
16	2:12:0	0.950	1364.000	106.00	13.000
17	2:15:0	1.000	1373.000	106.00	9.000
18	2:18:0	1.050	1382.000	106.00	9.000
19	2:21:0	1.100	1389.000	106.00	7.000
20	2:24:0	1.150	1395.000	106.00	6.000
21	2:27:0	1.200	1401.000	106.00	6.000
22	2:30:0	1.250	1406.000	106.00	5.000
23	2:31:0	1.267	80.000	106.00	-1326.000
24	2:34:59	1.333	80.000	106.00	0.000
25	2:40:0	1.417	80.000	106.00	0.000
26	2:45:0	1.500	80.000	106.00	0.000
27	2:49:59	1.583	80.000	106.00	0.000
28	2:55:0	1.667	80.000	106.00	0.000
29	3:0:0	1.750	80.000	106.00	0.000
30	3:4:59	1.833	80.000	106.00	0.000
31	3:10:0	1.917	80.000	106.00	0.000
32	3:15:0	2.000	80.000	106.00	0.000
33	3:19:59	2.083	80.000	106.00	0.000
34	3:25:0	2.167	80.000	106.00	0.000
35	3:30:0	2.250	80.000	106.00	0.000
36	3:33:0	2.300	663.000	106.00	583.000
37	3:36:0	2.350	917.000	106.00	254.000
38	3:39:0	2.400	985.000	106.00	68.000
39	3:42:0	2.450	1042.000	106.00	57.000
40	3:45:0	2.500	1075.000	106.00	34.000
41	3:48:0	2.550	1106.000	106.00	30.000
42	3:51:0	2.600	1128.000	106.00	22.000
43	3:54:0	2.650	1150.000	106.00	22.000
44	3:57:0	2.700	1166.000	106.00	16.000
45	4:0:0	2.750	1178.000	106.00	12.000
46	4:3:0	2.800	1191.000	106.00	13.000
47	4:6:0	2.850	1204.000	106.00	13.000
48	4:9:0	2.900	1211.000	106.00	7.000
49	4:12:0	2.950	1223.000	106.00	12.000
50	4:15:0	3.000	1234.000	106.00	11.000
51	4:18:0	3.050	1239.000	106.00	5.000
52	4:21:0	3.100	1247.000	106.00	8.000

COMPANY : DAVID W. CLOTHIER  
WELL : #1-12  
GAUGE # : 10979  
DATE : 11/ 7/88

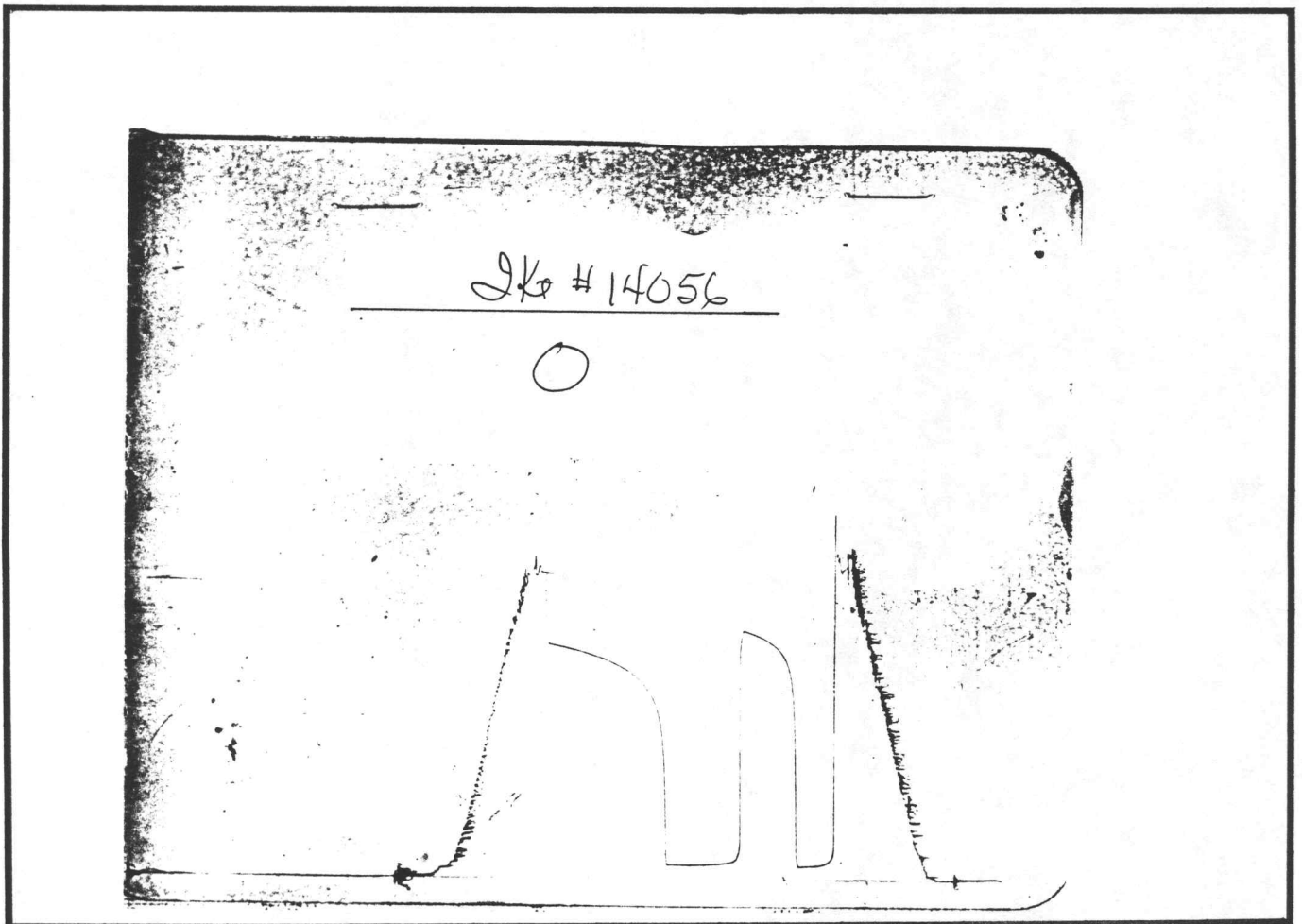
FIELD : SEELY  
JOB # : 14056  
DEPTH : 3325  
TEST :

DATA No.	REAL TIME HR:MN:SS	ELAPSE TIME DELTA HOURS	PRESSURE PSIG	TEMP DEG F	DELTA P Pi-P(i-1)
53	4:24: 0	3.150	1256.000	106.00	9.000
54	4:27: 0	3.200	1263.000	106.00	7.000
55	4:30: 0	3.250	1270.000	106.00	7.000
56	4:33: 0	3.300	1278.000	106.00	8.000
57	4:36: 0	3.350	1283.000	106.00	5.000
58	4:39: 0	3.400	1290.000	106.00	7.000
59	4:42: 0	3.450	1295.000	106.00	5.000
60	4:45: 0	3.500	1300.000	106.00	5.000
61	4:48: 0	3.550	1306.000	106.00	6.000
62	4:51: 0	3.600	1310.000	106.00	4.000
63	4:54: 0	3.650	1315.000	106.00	5.000
64	4:57: 0	3.700	1319.000	106.00	4.000
65	5: 0: 0	3.750	1322.000	106.00	3.000
66	5: 3: 0	3.800	1327.000	106.00	5.000
67	5: 6: 0	3.850	1329.000	106.00	2.000

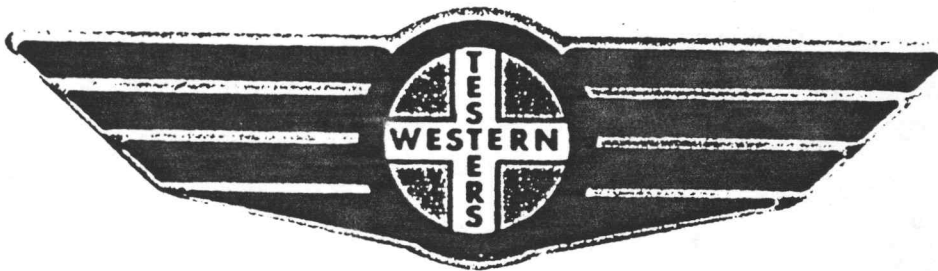
WESTERN TESTING CO. INC.



Inside Recorder



# FORMATION TEST REPORT



Home Office:

Wichita, Kansas 67201

P.O. Box 1599

Phone (316) 262-5861

COMPANY DAVID W. CLOTHIER

LEASE & WELL NO. SEELY #1-12

SEC. 12 TWP. 29S RGE. 1W TEST NO. 3 DATE 7/12/88

WESTERN TESTING CO. INC.  
SUBSURFACE PRESSURE SURVEY

DATE : 7-12-88  
CUSTOMER : DAVID W. CLOTHIER  
WELL : #1-12 TEST: 3  
ELEVATION : 1289 KB  
SECTION : 12  
RANGE : 1W COUNTY : SEDGWICK  
GAUGE SN# : 10979 RANGE : 4100  
TICKET : 14058  
LEASE : SEELY  
GEOLOGIST : D CLOTHIER  
FORMATION : SIMPSON  
TOWNSHIP : 29S  
STATE : KANSAS  
CLOCK : 12

INTERVAL FROM : 3625 TO : 3740 TOTAL DEPTH : 3740  
DEPTH OF SELECTIVE ZONE :  
PACKER DEPTH : 3620 SIZE : 6.63  
PACKER DEPTH : 3625 SIZE : 6.63  
PACKER DEPTH : SIZE :  
PACKER DEPTH : SIZE :

DRILLING CON. : DUKE RIG 3  
MUD TYPE : CHEMICAL VISCOSITY : 48  
WEIGHT : 9.8 WATER LOSS (CC) : 12  
CHLORIDES (PPM) : 2000  
JARS-MAKE : - SERIAL NUMBER :  
DID WELL FLOW ? : REVERSED OUT ? :

DRILL COLLAR LENGTH : 120 FT I.D. inch : 2.25  
WEIGHT PIPE LENGTH : 180 FT I.D. inch : 2.70  
DRILL PIPE LENGTH : 3303 FT I.D. inch : 3.80  
TEST TOOL LENGTH : 22 FT TOOL SIZE : 5.50  
ANCHOR LENGTH : 115 FT ANCHOR SIZE : 5.50  
SURFACE CHOKE SIZE : .75 IN BOTTOM CHOKE SIZE : .75  
MAIN HOLE SIZE : 7.875 IN TOOL JOINT SIZE : 4.5 XH

BLOW COMMENT #1 : WEAK TO VERY WEAK BLOW FOR 75 MINUTES.  
BLOW COMMENT #2 :  
BLOW COMMENT #3 :  
BLOW COMMENT #4 :

RECOVERED : 120 FT OF: DRILLING MUD

Total Barrels Fluid = 0.59  
Total Fluid Prod Rate = 11.33 BFPD  
Indicated Wtr Rate = 1.13 BWPD

REMARK 1 :  
REMARK 2 :  
REMARK 3 :  
REMARK 4 :

SET PACKER(S) : 7:15 PM

TIME STARTED OFF BOTTOM : 10:00 PM

WELL TEMPERATURE : 116

INITIAL HYDROSTATIC PRESSURE

(A) 1880

INITIAL FLOW PERIOD MIN: 30

(B) 37

PSI TO (C) : 48

INITIAL CLOSED IN PERIOD MIN: 45

(D) 1257

FINAL FLOW PERIOD MIN: 45

(E) 65

PSI TO (F) : 84

FINAL CLOSED IN PERIOD MIN: 45

(G) 1212

FINAL HYDROSTATIC PRESSURE

(H) 1860

WESTERN TESTING CO. INC.  
WICHITA-KANSAS

Pressure Transient Report  
-----

COMPANY : DAVID W. CLOTHIER  
RIG : SEDGWICK-KANSAS  
FIELD : SEELY  
WELL : #1-12  
DATE : 7-12-88  
GAUGE NO : 10979

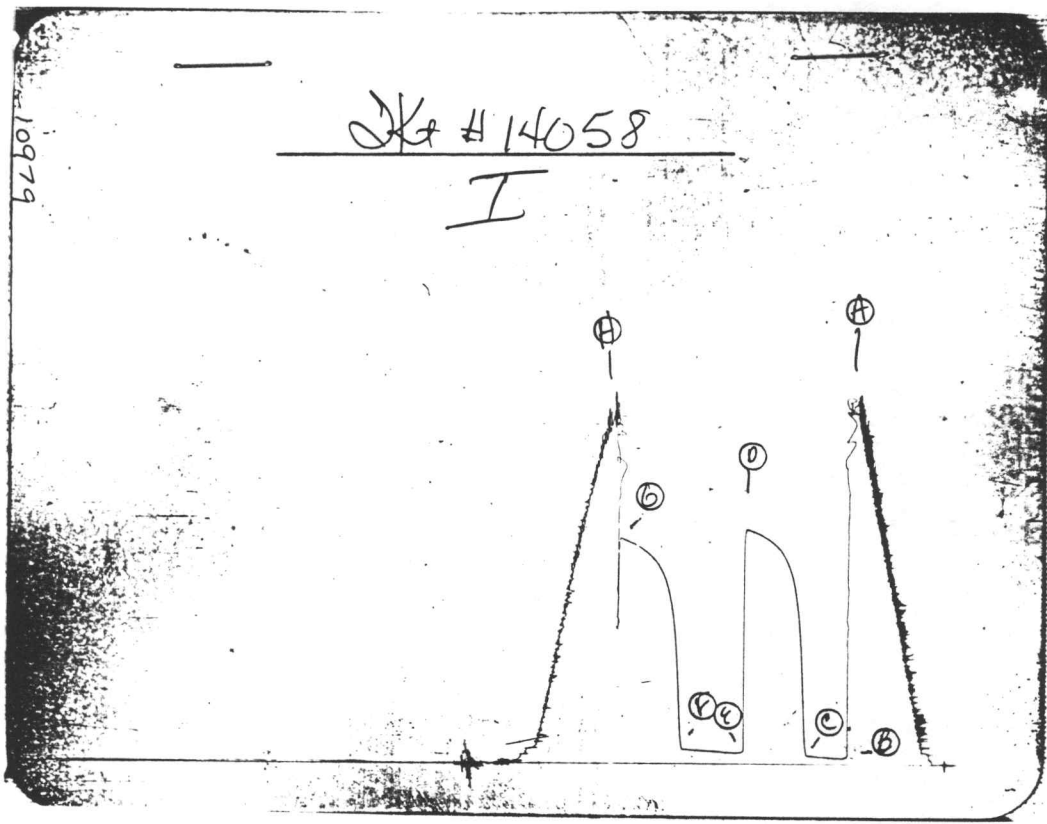
OPERATIONAL COMMENTS

COMPANY : DAVID W. CLOTHIER  
 WELL : #1-12  
 GAUGE # : 10979  
 DATE : 12/ 7/88

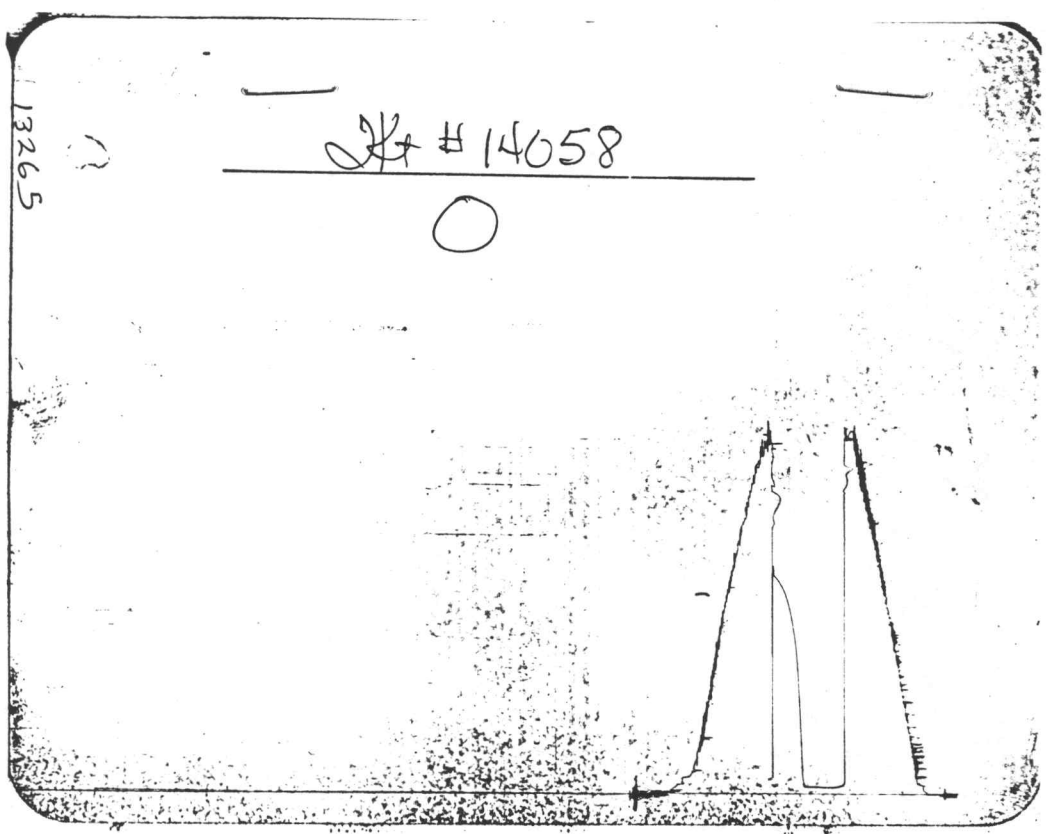
FIELD : SEELY  
 JOB # : 14058  
 DEPTH : 3740  
 TEST :

DATA No.	REAL TIME HR:MN:SS	ELAPSE TIME DELTA HOURS	PRESSURE PSIG	TEMP DEG F	DELTA P P1-P(i-1)
1	7:15: 0	0.000	37.000	116.00	0.000
2	7:19:59	0.083	37.000	116.00	0.000
3	7:25: 0	0.167	37.000	116.00	0.000
4	7:30: 0	0.250	39.000	116.00	2.000
5	7:34:59	0.333	42.000	116.00	3.000
6	7:40: 0	0.417	45.000	116.00	3.000
7	7:45: 0	0.500	48.000	116.00	3.000
8	7:48: 0	0.550	418.000	116.00	370.000
9	7:51: 0	0.600	758.000	116.00	340.000
10	7:54: 0	0.650	934.000	116.00	176.000
11	7:57: 0	0.700	1019.000	116.00	85.000
12	8: 0: 0	0.750	1078.000	116.00	59.000
13	8: 3: 0	0.800	1123.000	116.00	45.000
14	8: 6: 0	0.850	1156.000	116.00	33.000
15	8: 9: 0	0.900	1178.000	116.00	22.000
16	8:12: 0	0.950	1197.000	116.00	19.000
17	8:15: 0	1.000	1211.000	116.00	14.000
18	8:18: 0	1.050	1224.000	116.00	13.000
19	8:21: 0	1.100	1237.000	116.00	13.000
20	8:24: 0	1.150	1246.000	116.00	9.000
21	8:27: 0	1.200	1253.000	116.00	7.000
22	8:30: 0	1.250	1257.000	116.00	4.000
23	8:31: 0	1.267	65.000	116.00	-1192.000
24	8:34:59	1.333	65.000	116.00	0.000
25	8:40: 0	1.417	66.000	116.00	1.000
26	8:45: 0	1.500	69.000	116.00	3.000
27	8:49:59	1.583	72.000	116.00	3.000
28	8:55: 0	1.667	73.000	116.00	1.000
29	9: 0: 0	1.750	76.000	116.00	3.000
30	9: 4:59	1.833	79.000	116.00	3.000
31	9:10: 0	1.917	82.000	116.00	3.000
32	9:15: 0	2.000	84.000	116.00	2.000
33	9:18: 0	2.050	528.000	116.00	444.000
34	9:21: 0	2.100	780.000	116.00	252.000
35	9:24: 0	2.150	907.000	116.00	127.000
36	9:27: 0	2.200	987.000	116.00	80.000
37	9:30: 0	2.250	1039.000	116.00	52.000
38	9:33: 0	2.300	1077.000	116.00	38.000
39	9:36: 0	2.350	1107.000	116.00	30.000
40	9:39: 0	2.400	1128.000	116.00	21.000
41	9:42: 0	2.450	1145.000	116.00	17.000
42	9:45: 0	2.500	1162.000	116.00	17.000
43	9:48: 0	2.550	1173.000	116.00	11.000
44	9:51: 0	2.600	1184.000	116.00	11.000
45	9:54: 0	2.650	1196.000	116.00	12.000
46	9:57: 0	2.700	1204.000	116.00	8.000
47	10: 0: 0	2.750	1212.000	116.00	8.000

WESTERN TESTING CO. INC.



Inside Recorder



Outside Recorder