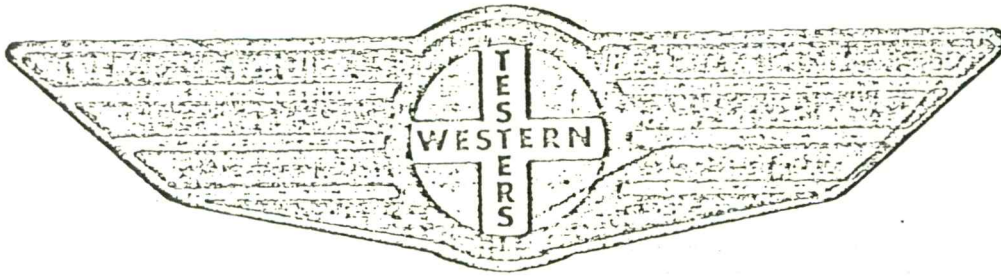


FORMATION

TEST

REPORT



Home Office:

Wichita, Kansas 67201

P.O. Box 1599

Phone (316) 262-5861

pany BEREXCO, INC. Lease and Well No. #1 PRATHER Sec. 12 Twp. 47S Rge. 14W Test No. 1 Date

WESTERN TESTING CO. INC.  
SUBSURFACE PRESSURE SURVEY

DATE: 2/15/84  
CUSTOMER: BEREXCO  
WELL: 1  
ELEVATION (KB): 1981  
SECTION: 12  
RANGE: 14W  
GAUGE SN #2606

TEST: 1  
FORMATION: INDIAN CAVE  
TOWNSHIP: 29S  
COUNTY: PRATT  
RANGE: 4150

TICKET #4194  
LEASE: PRATHER  
GEOLOGIST: ?  
STATE: KANSAS  
CLOCK: 12

INTERVAL TEST FROM: 2946 FT TO: 2995 FT TOTAL DEPTH: 2995 FT  
DEPTH OF SELECTIVE ZONE: FT  
PACKER DEPTH: 2941 FT SIZE: 6 3/4 IN PACKER DEPTH: 2946 FT SIZE: 6 3/4 IN  
PACKER DEPTH: FT SIZE: IN PACKER DEPTH: FT SIZE: IN

DRILLING CONTRACTOR: BEREDCO  
MUD TYPE: CHEM VISCOSITY: 39  
WEIGHT: 8.7 WATER LOSS (CC): 15.2  
CHLORIDES (P.P.M.): 5000  
JARS - MAKE: NO SERIAL NUMBER:  
DID WELL FLOW? NO REVERSED OUT? NO  
DRILL COLLAR LENGTH: 355 FT I.D.: 2.25 IN  
WEIGHT PIPE LENGTH: FT I.D.: IN  
DRILL PIPE LENGTH: 2569 FT I.D.: 3.8 IN  
TEST TOOL LENGTH: 22 FT TOOL SIZE: 5 1/2 O.D. IN  
ANCHOR LENGTH: 49 FT SIZE: 5 1/2 O.D. IN  
SURFACE CHOKE SIZE: 3/4 IN BOTTOM CHOKE SIZE: 3/4 IN  
MAIN HOLE SIZE: 7 7/8 IN TOOL JOINT SIZE: 4 1/2 FH IN

BLOW: INITIAL FLOW PERIOD VERY WEAK BLOW  
FOR 15 MINUTES THEN DEAD. FINAL  
FLOW NO BLOW ; FLUSHED TOOL FEW  
BUBBLES THEN DEAD.

RECOVERED: 40 FT OF: DRLG. MUD.  
RECOVERED: FT OF:  
RECOVERED: FT OF:  
RECOVERED: FT OF:  
RECOVERED: FT OF:  
RECOVERED: FT OF:  
RECOVERED: FT OF:  
RECOVERED: FT OF:  
RECOVERED: FT OF:  
RECOVERED: FT OF:

REMARKS: OPEN TOOL SLID TO BOTTOM HAD TO  
PICK UP ANOTHER JOINT.

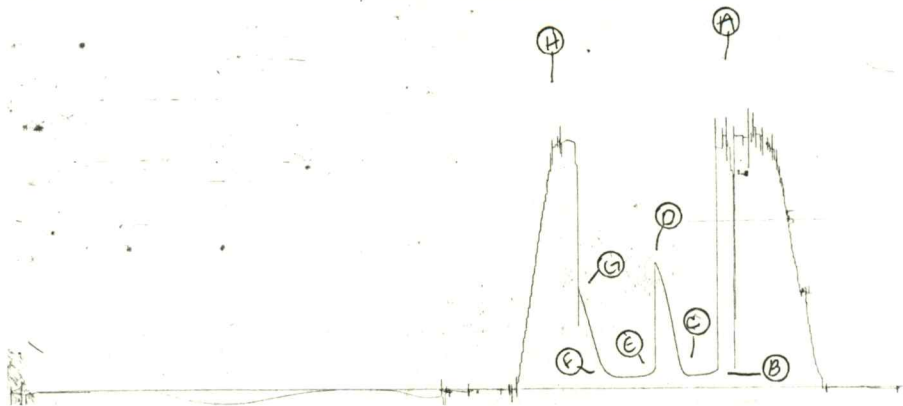
TIME SET PACKER(S): 5:30 P.M. TIME STARTED OFF BOTTOM: 7:30 P.M.  
WELL TEMPERATURE: 98 °F  
INITIAL HYDROSTATIC PRESSURE: (A) 1345 PSI  
INITIAL FLOW PERIOD MIN: 20 (B) 67 PSI TO (C) 67 PSI  
INITIAL CLOSED IN PERIOD MIN: 27 (D) 670 PSI  
FINAL FLOW PERIOD MIN: 30 (E) 58 PSI TO (F) 58 PSI  
FINAL CLOSED IN PERIOD MIN: 30 (G) 520 PSI  
FINAL HYDROSTATIC PRESSURE (H) 1313 PSI



2600 W171

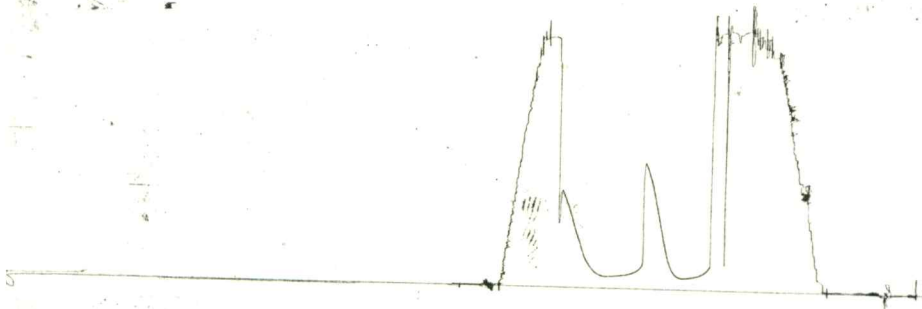
TCE# 4194

I



TEXT 4194

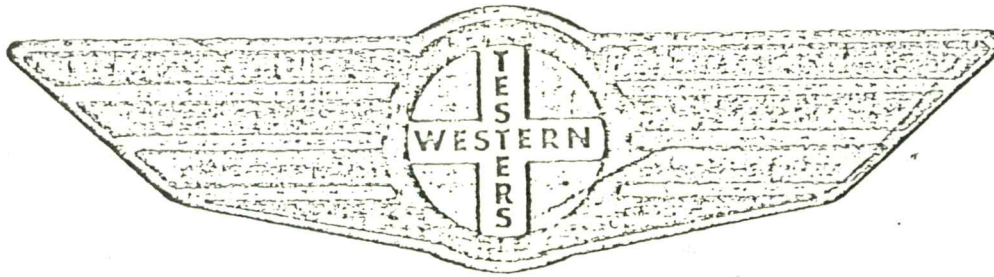
0



FORMATION

TEST

REPORT



Home Office:

Wichita, Kansas 67201

P.O. Box 1599

Phone (316) 262-5861

Company \_\_\_\_\_ BEREEXCO, INC. \_\_\_\_\_ Lease and Well No. \_\_\_\_\_ #1 PRAIRIER \_\_\_\_\_ Sec. \_\_\_\_\_ 12 TWP. \_\_\_\_\_ 29S Rge. \_\_\_\_\_ 14W \_\_\_\_\_ Test No. \_\_\_\_\_ 2 \_\_\_\_\_ Date 1/10/84

WESTERN TESTING CO. INC.  
SUBSURFACE PRESSURE SURVEY

DATE: 2/16/84  
CUSTOMER: BEREXCO INC.  
WELL: 1  
ELEVATION (KB): 1981  
SECTION: 12  
RANGE: 14W  
GAUGE SN #2606

TEST: 2  
FORMATION: HOWARD  
TOWNSHIP: 29S  
COUNTY: PRATT  
RANGE: 4150

TICKET #4195  
LEASE: PRATHER  
GEOLOGIST: LEWELLYN  
STATE: KANSAS  
CLOCK: 12

INTERVAL TEST FROM: 3308 FT TO: 3325 FT TOTAL DEPTH: 3325 FT  
DEPTH OF SELECTIVE ZONE: FT  
PACKER DEPTH: 3303 FT SIZE: 6 3/4 IN PAKER DEPTH: 3308 FT SIZE: 6 3/4 IN  
PACKER DEPTH: FT SIZE: IN PAKER DEPTH: FT SIZE: IN

DRILLING CONTRACTOR: BEREDCO  
MUD TYPE: CHEMICAL VISCOSITY: 49  
WEIGHT: 9.1 WATER LOSS (CC): 20.0  
CHLORIDES (P.P.M.): 13000  
JARS - MAKE: NO SERIAL NUMBER:  
DID WELL FLOW? NO REVERSED OUT? YES  
DRILL COLLAR LENGTH: 265 FT I.D.: 2 1/4 IN  
WEIGHT PIPE LENGTH: FT I.D.: IN  
DRILL PIPE LENGTH: 3021 FT I.D.: 3.8 IN  
TEST TOOL LENGTH: 22 FT TOOL SIZE: 5 1/2 OD IN  
ANCHOR LENGTH: 17 FT SIZE: 5 1/2 OD IN  
SURFACE CHOKE SIZE: 3/4 IN BOTTOM CHOKE SIZE: 3/4 IN  
MAIN HOLE SIZE: 7 7/8 IN TOOL JOINT SIZE: 4 1/2 FH IN

BLOW: STRONG BLOW ON BOTH FLOW PERIODS.  
NO GAS TO SURFACE.

RECOVERED: 2000 FT OF: WATER  
RECOVERED: FT OF:  
RECOVERED: FT OF:  
RECOVERED: FT OF:  
RECOVERED: FT OF:  
RECOVERED: FT OF:  
RECOVERED: FT OF:  
RECOVERED: FT OF:  
RECOVERED: FT OF:  
RECOVERED: FT OF:

REMARKS: CHLORIDES 125000 PPM

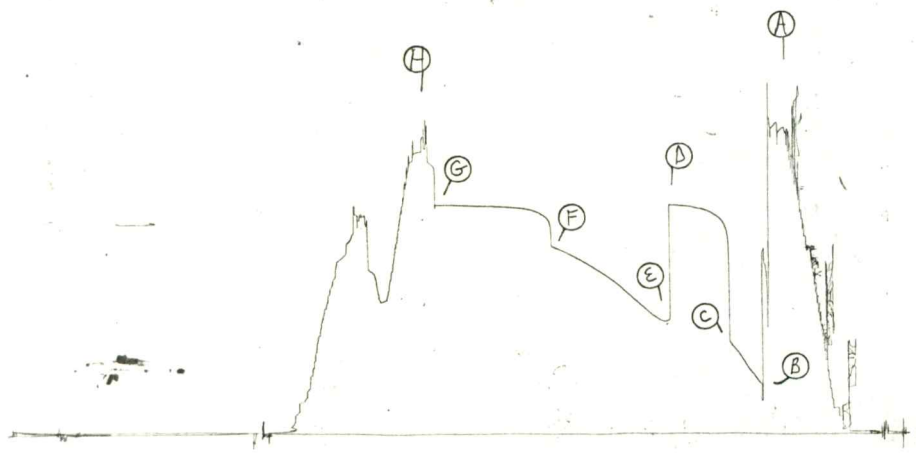
TIME SET PACKER(S): 1:40 TIME STARTED OFF BOTTOM: 5:45 PM  
WELL TEMPERATURE: 112 °F  
INITIAL HYDROSTATIC PRESSURE: (A) 1638 PSI  
INITIAL FLOW PERIOD MIN: 25 (B) 267 PSI TO (C) 496 PSI  
INITIAL CLOSED IN PERIOD MIN: 45 (D) 1233 PSI  
FINAL FLOW PERIOD MIN: 90 (E) 606 PSI TO (F) 1012 PSI  
FINAL CLOSED IN PERIOD MIN: 87 (G) 1123 PSI  
FINAL HYDROSTATIC PRESSURE (H) 1582 PSI



2606 DST#

TKT # 4195

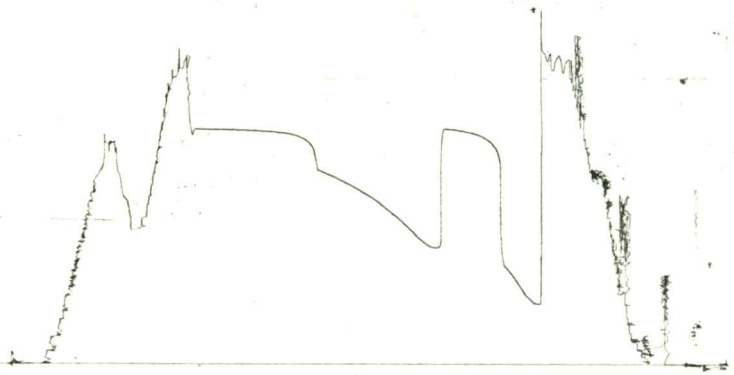
I



13267 NSTH

TKT # 4195

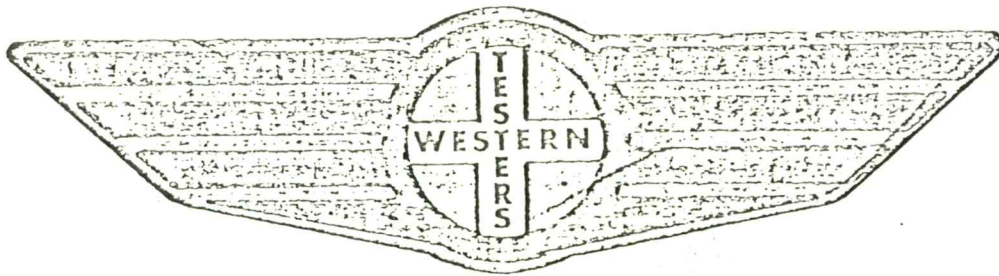
O



# FORMATION

# TEST

# REPORT



Home Office:

Wichita, Kansas 67201

P.O. Box 1599

Phone (316) 262-5861

Company \_\_\_\_\_ BEREEXO, INC. \_\_\_\_\_  
Lease and Well No. \_\_\_\_\_ #1 PRATHER \_\_\_\_\_  
Sec. \_\_\_\_\_ 12 Twp. \_\_\_\_\_ 29S Rge. \_\_\_\_\_ 14W Test No. \_\_\_\_\_ 3 \_\_\_\_\_  
Date 2/18/84

WESTERN TESTING CO. INC.  
SUBSURFACE PRESSURE SURVEY

DATE: 2/18/84  
CUSTOMER: BEREXCO INC.  
WELL: 1  
ELEVATION (KB): 1981  
SECTION: 12  
RANGE: 14W  
GAUGE SN #2606

TEST: 3  
FORMATION: BASE K.C.  
TOWNSHIP: 29S  
COUNTY: PRATT  
RANGE: 4150

TICKET #4196  
LEASE: PRATHER  
GEOLOGIST: ?  
STATE: KANSAS  
CLOCK: 12

INTERVAL TEST FROM: 3980 FT TO: 4008 FT TOTAL DEPTH: 4008 FT  
DEPTH OF SELECTIVE ZONE: FT  
PACKER DEPTH: 3975 FT SIZE: 6 3/4 IN Packer DEPTH: 3980 FT SIZE: 6 3/4 IN  
PACKER DEPTH: FT SIZE: IN Packer DEPTH: FT SIZE: IN

DRILLING CONTRACTOR: BEREDCO  
MUD TYPE: CHEM VISCOSITY: 52  
WEIGHT: 9.3 WATER LOSS (CC): 15.4  
CHLORIDES (P.P.M.): 18000  
JARS - MAKE: NO SERIAL NUMBER:  
DID WELL FLOW? NO REVERSED OUT? NO  
DRILL COLLAR LENGTH: 265 FT I.D.: 2.25 IN  
WEIGHT PIPE LENGTH: FT I.D.: IN  
DRILL PIPE LENGTH: 3693 FT I.D.: 3.8 IN  
TEST TOOL LENGTH: 22 FT TOOL SIZE: 5 1/2 O.D. IN  
ANCHOR LENGTH: 28 FT SIZE: 5 1/2 O.D. IN  
SURFACE CHOKE SIZE: 3/4 IN BOTTOM CHOKE SIZE: 3/4 IN  
MAIN HOLE SIZE: 7 7/8 IN TOOL JOINT SIZE: 4 1/2 FH IN

BLOW: STRONG BLOW THROUGHOUT TEST.  
GAS TO SURFACE IN 3 MINUTES. SEE  
FLOW CHART.

RECOVERED: 95 FT OF: OIL CUT MUD. 10% OIL; 90% MUD.  
RECOVERED: FT OF:  
RECOVERED: FT OF:  
RECOVERED: FT OF:  
RECOVERED: FT OF:  
RECOVERED: FT OF:  
RECOVERED: FT OF:  
RECOVERED: FT OF:  
RECOVERED: FT OF:  
RECOVERED: FT OF:

REMARKS:

TIME SET PACKER(S): 10:15 A.M. TIME STARTED OFF BOTTOM: 2:00 P.M.  
WELL TEMPERATURE: 116 °F  
INITIAL HYDROSTATIC PRESSURE: (A) 2069 PSI  
INITIAL FLOW PERIOD MIN: 30 (B) 308 PSI TO (C) 78 PSI  
INITIAL CLOSED IN PERIOD MIN: 42 (D) 1013 PSI  
FINAL FLOW PERIOD MIN: 60 (E) 164 PSI TO (F) 29 PSI  
FINAL CLOSED IN PERIOD MIN: 90 (G) 599 PSI  
FINAL HYDROSTATIC PRESSURE (H) 1915 PSI





WESTERN TESTING CO. INC.  
GAS FLOW REPORT

DATE: 2/18/84  
CUSTOMER: BEREXCO INC.  
WELL: 1  
ELEVATION (KB): 1981  
SECTION: 12  
RANGE: 14W  
GAUGE SN #2606

TEST: 3  
FORMATION: BASE K.C.  
TOWNSHIP: 29S  
COUNTY: PRATT  
RANGE: 4150

TICKET #4196  
LEASE: PRATHER  
GEOLOGIST: ?  
STATE: KANSAS  
CLOCK: 12

TIME GAUGE (MIN)	TESTER TYPE	ORIFICE SIZE	PRESSURE (PSI)	FLOW DESCRIPTION
---------------------	-------------	-----------------	-------------------	------------------

PRE FLOW

3				GAS TO SURFACE IN 3 MINUTES.
10	MERLA	1 1/2	5 PSIG	863000 CFPD
20			5 PSIG	863000 " "
30			4 PSIG	764000 " "

SECOND FLOW

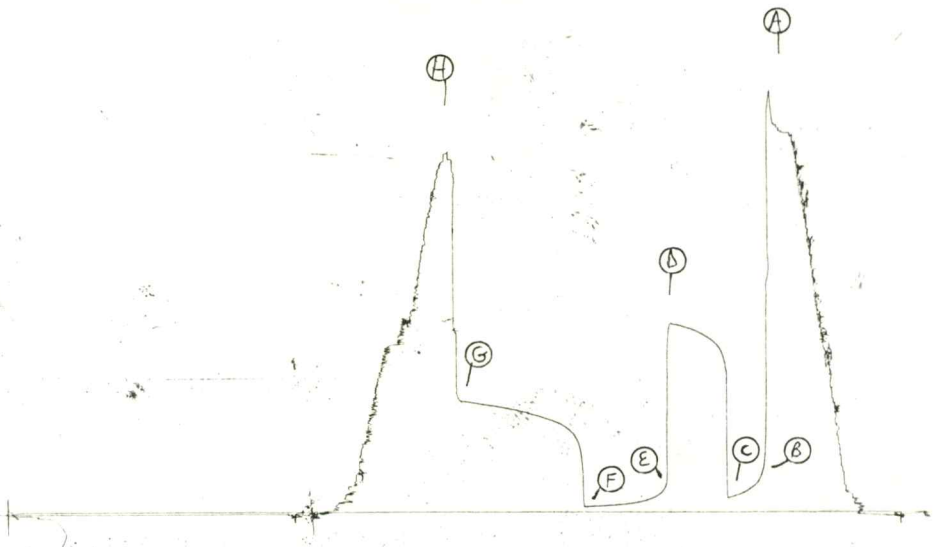
10	MERLA	1	5 PSIG	319000 CFPD
20			4 PSIG	283000 " "
30			2 PSIG	195000 " "
40			2 PSIG	195000 " "
50			2 PSIG	195000 " "
60			2 PSIG	195000 " "

GAS BOTTLE SN #: 2/18/84  
DATE BOTTLE FILLED:  
DATE TO BE INVOICED:

2646 122143

TKT # 4196

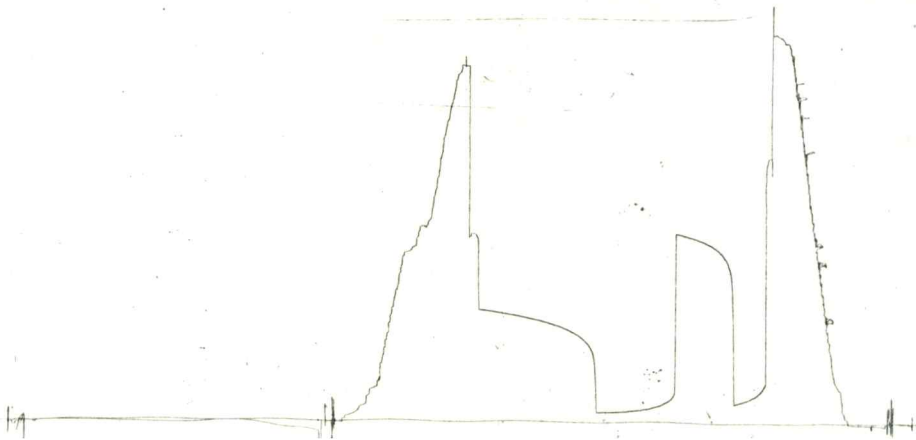
I



13267 DST #3

TKT # 4196

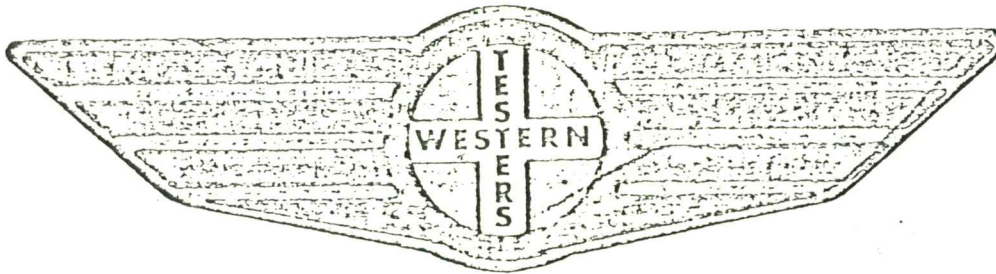
O



FORMATION

TEST

REPORT



Home Office:

Wichita, Kansas 67201

P.O. Box 1599

Phone (316) 262-5861

Company \_\_\_\_\_ BEREXCO, INC. \_\_\_\_\_ Lease and Well No. \_\_\_\_\_ #1 PRAIRIE \_\_\_\_\_ Sec. \_\_\_\_\_ Twp. \_\_\_\_\_ Rge. \_\_\_\_\_ Test No. \_\_\_\_\_ Date 7/17/84

WESTERN TESTING.CO. INC.  
SUBSURFACE PRESSURE SURVEY

DATE: 2/19/84  
CUSTOMER: BEREXCO INC.  
WELL: 1  
ELEVATION (KB): 1981  
SECTION: 12  
RANGE: 14W  
GAUGE SN #2606

TEST: 4  
FORMATION: BASE K.C.  
TOWNSHIP: 29S  
COUNTY: PRATT  
RANGE: 4150

TICKET #4197  
LEASE: PRATHER  
GEOLOGIST: ?  
STATE: KANSAS  
CLOCK: 12

INTERVAL TEST FROM: 4021 FT TO: 4040 FT TOTAL DEPTH: 4040 FT  
DEPTH OF SELECTIVE ZONE: FT  
PACKER DEPTH: 4016 FT SIZE: 6 3/4 IN PAKER DEPTH: 4021 FT SIZE: 6 3/4 IN  
PACKER DEPTH: FT SIZE: IN PAKER DEPTH: FT SIZE: IN

DRILLING CONTRACTOR: BEREDCO  
MUD TYPE: CHEM VISCOSITY: 48  
WEIGHT: 9.1 WATER LOSS (CC): 12.4  
CHLORIDES (P.P.M.): 15000  
JARS - MAKE: NO SERIAL NUMBER:  
DID WELL FLOW? NO REVERSED OUT? NO  
DRILL COLLAR LENGTH: 265 FT I.D.: 2.25 IN  
WEIGHT PIPE LENGTH: FT I.D.: IN  
DRILL PIPE LENGTH: 3734 FT I.D.: 3.8 IN  
TEST TOOL LENGTH: 22 FT TOOL SIZE: 5 1/2 O.D. IN  
ANCHOR LENGTH: 19 FT SIZE: 5 1/2 O.D. IN  
SURFACE CHOKE SIZE: 3/4 IN BOTTOM CHOKE SIZE: 3/4 IN  
MAIN HOLE SIZE: 7 7/8 IN TOOL JOINT SIZE: 4 1/2 FH IN

BLOW: INITIAL FLOW PERIOD STRONG BLOW  
THROUGHOUT. FINAL FLOW PERIOD STRONG  
BLOW THROUGHOUT. GAS TO SURFACE  
IN 80 MINUTES INTO FINAL FLOW.

RECOVERED: 75 FT OF: GAS & OIL CUT MUD.  
RECOVERED: FT OF: 30% GAS; 30% OIL; 40% MUD.  
RECOVERED: 200 FT OF: GAS & HEAVY OIL;  
RECOVERED: FT OF: 50% GAS; 40% OIL; 10% MUD.  
RECOVERED: FT OF:  
RECOVERED: FT OF:  
RECOVERED: FT OF:  
RECOVERED: FT OF:  
RECOVERED: FT OF:

REMARKS:

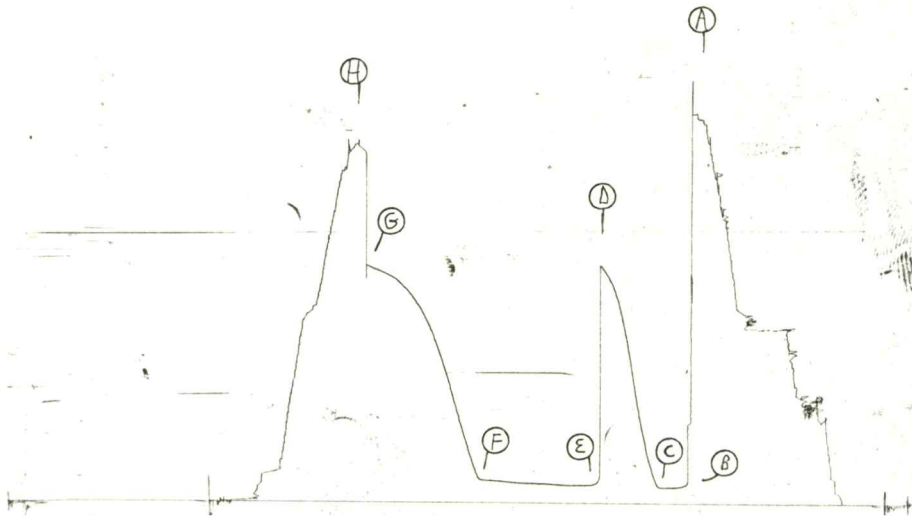
TIME SET PACKER(S): 2:30 A.M. TIME STARTED OFF BOTTOM: 6:45 A.M.  
WELL TEMPERATURE: 118 °F  
INITIAL HYDROSTATIC PRESSURE: (A) 2070 PSI  
INITIAL FLOW PERIOD MIN: 20 (B) 83 PSI TO (C) 83 PSI  
INITIAL CLOSED IN PERIOD MIN: 45 (D) 1268 PSI  
FINAL FLOW PERIOD MIN: 90 (E) 96 PSI TO (F) 124 PSI  
FINAL CLOSED IN PERIOD MIN: 87 (G) 1265 PSI  
FINAL HYDROSTATIC PRESSURE (H) 1909 PSI



2606 US1 #4

TKT # 4197

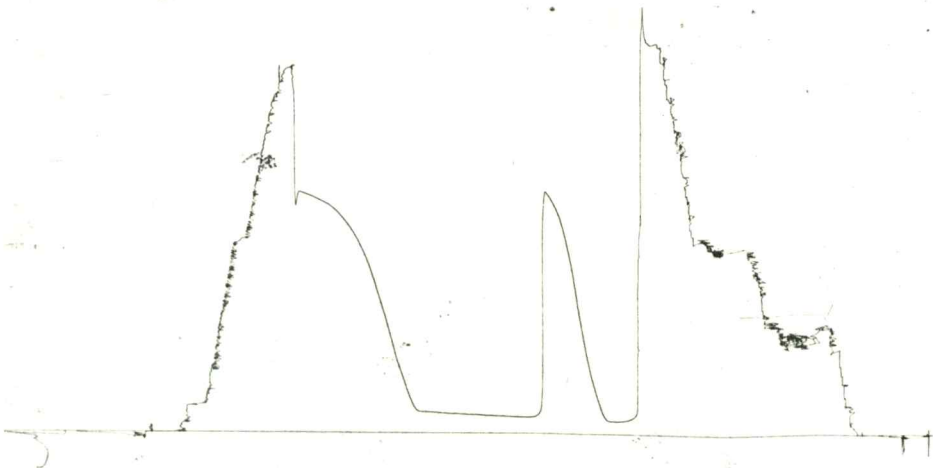
I



13261 DST#4

TKT. # 4197

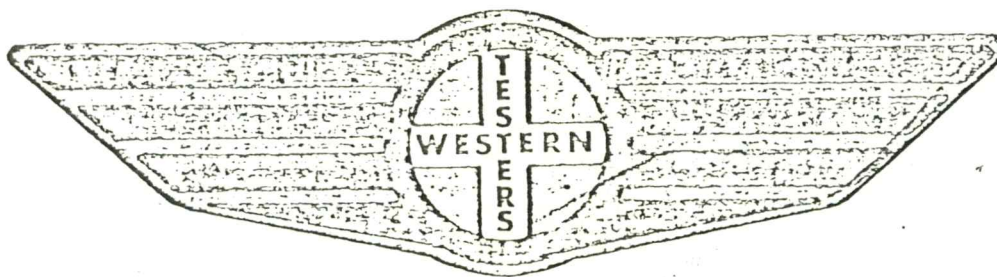
0



# FORMATION

# TEST

# REPORT



Home Office:

Wichita, Kansas 67201

P.O. Box 1599

Phone (316) 262-5861

pany  
BEREXCO, INC.  
Lease and Well No.  
#1 PRATHER  
Sec. 12  
Twp.  
Rge.  
14W  
Test No.  
Date 4/20/04

WESTERN TESTING CO. INC.  
SUBSURFACE PRESSURE SURVEY

DATE: 2/20/84  
CUSTOMER: BEREXCO INC.  
WELL: 1  
ELEVATION (KB): 1981  
SECTION: 12  
RANGE: 14W  
GAUGE SN #2606

TEST: 5  
FORMATION:  
TOWNSHIP: 29S  
COUNTY: PRATT  
RANGE: 4150

TICKET #4198  
LEASE: PRATHER  
GEOLOGIST: LEWELLYN  
LANSING KANSAS CITY  
STATE: KANSAS  
CLOCK: 12

INTERVAL TEST FROM: 4278 FT TO: 4315 FT TOTAL DEPTH: 4315 FT  
DEPTH OF SELECTIVE ZONE: FT  
PACKER DEPTH: 4273 FT SIZE: 6 3/4 IN PAKER DEPTH: 4278 FT SIZE: 6 3/4 IN  
PACKER DEPTH: FT SIZE: IN PAKER DEPTH: FT SIZE: IN

DRILLING CONTRACTOR: BEREDCO DRLG  
MUD TYPE: CHEMICAL VISCOSITY: 50  
WEIGHT: 9.5 WATER LOSS (CC): 12.4  
CHLORIDES (P.P.M.): 13000  
JARS - MAKE: NO SERIAL NUMBER:  
DID WELL FLOW? NO REVERSED OUT? NO  
DRILL COLLAR LENGTH: 265 FT I.D.: 2.25 IN  
WEIGHT PIPE LENGTH: FT I.D.: IN  
DRILL PIPE LENGTH: 3991 FT I.D.: 3.8 IN  
TEST TOOL LENGTH: 22 FT TOOL SIZE: 5 1/2 OD IN  
ANCHOR LENGTH: 37 FT SIZE: 5 1/2 OD IN  
SURFACE CHOKE SIZE: 3/4 IN BOTTOM CHOKE SIZE: 3/4 IN  
MAIN HOLE SIZE: 7 7/8 IN TOOL JOINT SIZE: 4 1/2 XH IN

BLOW: INITIAL FLOW PERIOD VERY WEAK BLOW.  
DIED IN 15 MINUTES.  
FINAL FLOW PERIOD VERY WEAK BLOW FOR 5  
MINUTES. THEN DIED.

RECOVERED: 20 FT OF: DRILLING MUD.  
RECOVERED: FT OF:  
RECOVERED: FT OF:  
RECOVERED: FT OF:  
RECOVERED: FT OF:  
RECOVERED: FT OF:  
RECOVERED: FT OF:  
RECOVERED: FT OF:  
RECOVERED: FT OF:

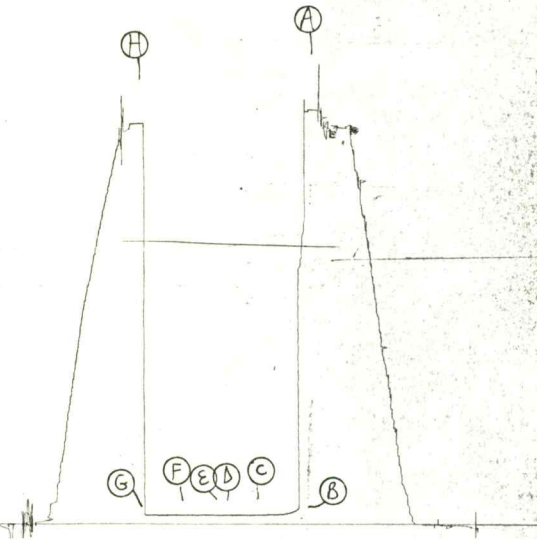
REMARKS:

TIME SET PACKER(S): 5:15 AM TIME STARTED OFF BOTTOM: 7:15 AM  
WELL TEMPERATURE: 118 °F  
INITIAL HYDROSTATIC PRESSURE: (A) 2223 PSI  
INITIAL FLOW PERIOD MIN: 30 (B) 51 PSI TO (C) 51 PSI  
INITIAL CLOSED IN PERIOD MIN: 30 (D) 51 PSI  
FINAL FLOW PERIOD MIN: 30 (E) 51 PSI TO (F) 51 PSI  
FINAL CLOSED IN PERIOD MIN: 30 (G) 51 PSI  
FINAL HYDROSTATIC PRESSURE (H) 2169 PSI



TKT # 4198

I

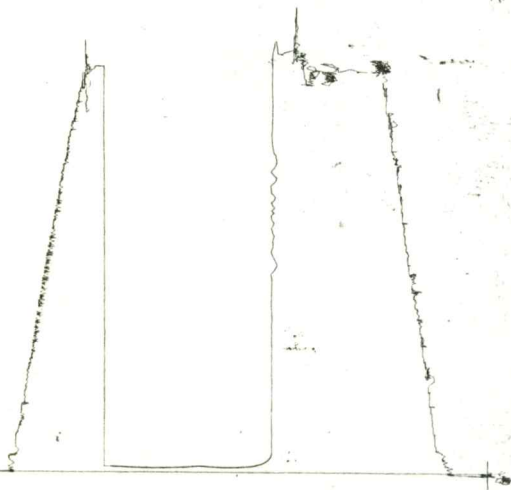


15261 221 203

TRT # 4198

O

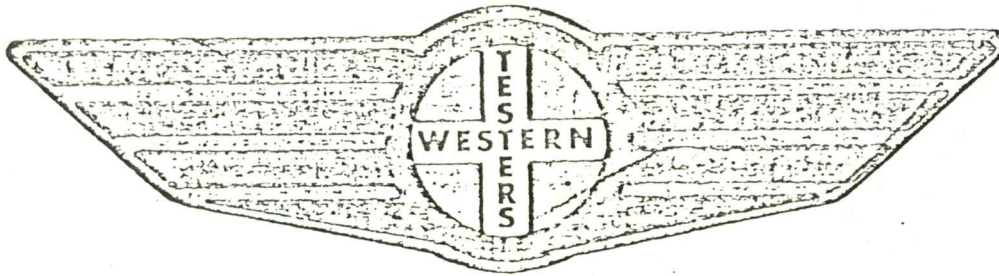
TRT



FORMATION

TEST

REPORT



Home Office:

Wichita, Kansas 67201

P.O. Box 1599

Phone (316) 262-5861

pany

BEREXCO, INC.

Lease and Well No.

#1 PRATHER

Sec. 12

Twp. 29S

Rge.

14W

Test No. 6

Date 2/20/84

WESTERN TESTING CO. INC.  
SUBSURFACE PRESSURE SURVEY

DATE: 2/20/84 TICKET #4199  
CUSTOMER: BEREXCO INC. LEASE: PRATHER  
WELL: 1 TEST: 6 GEOLOGIST: LEWELLYN  
ELEVATION (KB): 1981 FORMATION: PLEASANTON  
SECTION: 12 TOWNSHIP: 29S  
RANGE: 14W COUNTY: PRATT STATE: KANSAS  
GAUGE SN #2606 RANGE: 4150 CLOCK: 12

INTERVAL TEST FROM: 4318 FT TO: 4350 FT TOTAL DEPTH: 4350 FT  
DEPTH OF SELECTIVE ZONE: FT  
PACKER DEPTH: 4313 FT SIZE: 6 3/4 IN PACKER DEPTH: 4318 FT SIZE: 6 3/4 IN  
PACKER DEPTH: FT SIZE: IN PACKER DEPTH: FT SIZE: IN

DRILLING CONTRACTOR: BEREDCO DRLG  
MUD TYPE: CHEMICAL VISCOSITY: 54  
WEIGHT: 9.2 WATER LOSS (CC): 15.2  
CHLORIDES (P.P.M.): 13000  
JARS - MAKE: NO SERIAL NUMBER:  
DID WELL FLOW? NO REVERSED OUT? NO  
DRILL COLLAR LENGTH: 265 FT I.D.: 2.25 IN  
WEIGHT PIPE LENGTH: FT I.D.: IN  
DRILL PIPE LENGTH: 4031 FT I.D.: 3.8 IN  
TEST TOOL LENGTH: 22 FT TOOL SIZE: 5 1/2 OD IN  
ANCHOR LENGTH: 32 FT SIZE: 5 1/2 OD IN  
SURFACE CHOKE SIZE: 3/4 IN BOTTOM CHOKE SIZE: 3/4 IN  
MAIN HOLE SIZE: 7 7/8 IN TOOL JOINT SIZE: 4 1/2 XH IN

BLOW: STRONG BLOW THROUGHOUT TEST.

RECOVERED: 3000 FT OF: GAS ABOVE FLUID.  
RECOVERED: 40 FT OF: GASSY SLIGHTLY OIL CUT MUD.  
RECOVERED: 60 FT OF: FROGGY OIL. 25% GAS; 50% OIL; 25% MUD.  
RECOVERED: FT OF:  
RECOVERED: FT OF:  
RECOVERED: FT OF:  
RECOVERED: FT OF:  
RECOVERED: FT OF:  
RECOVERED: FT OF:  
RECOVERED: FT OF:

REMARKS:

TIME SET PACKER(S): 6:00 PM TIME STARTED OFF BOTTOM: 10:45 PM  
WELL TEMPERATURE: 0 °F  
INITIAL HYDROSTATIC PRESSURE: (A) 2282 PSI  
INITIAL FLOW PERIOD MIN: 30 (B) 54 PSI TO (C) 54 PSI  
INITIAL CLOSED IN PERIOD MIN: 42 (D) 437 PSI  
FINAL FLOW PERIOD MIN: 115 (E) 70 PSI TO (F) 72 PSI  
FINAL CLOSED IN PERIOD MIN: 84 (G) 650 PSI  
FINAL HYDROSTATIC PRESSURE (H) 2094 PSI

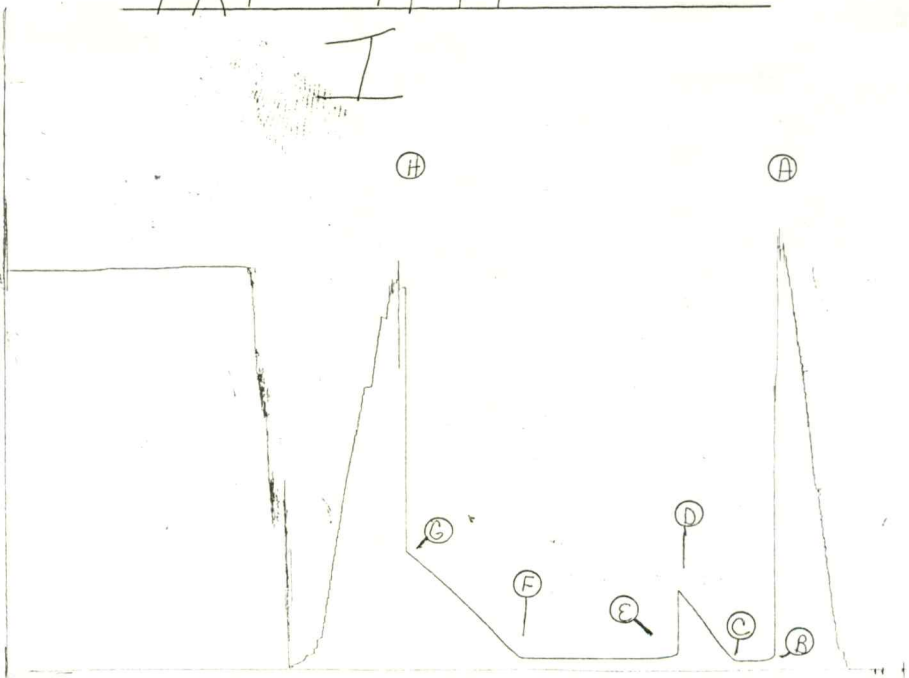


72606 PST # 6

1569

TKT # 4199

I



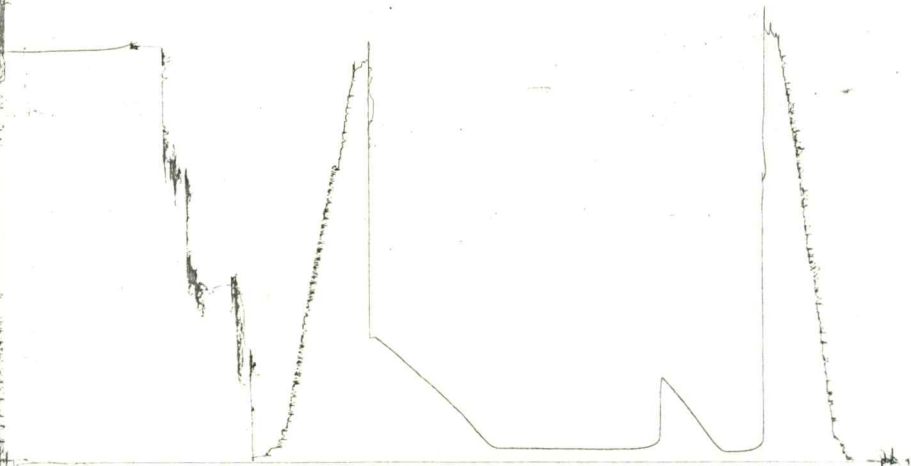
AST # 6

13267

TKT# 4199

---

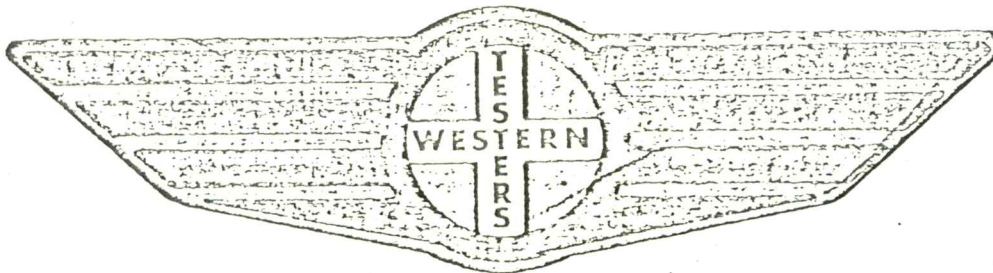
O



FORMATION

TEST

REPORT



Home Office:

Wichita, Kansas 67201

P.O. Box 1599

Phone (316) 262-5861

Company

BEREXCO, INC.

Lease and Well No.

#1 PRATHER

Sec.

12

Twp.

29S

Rge.

14W

Test No.

7

Date

2/23/84

WESTERN TESTING CO. INC.  
SUBSURFACE PRESSURE SURVEY

DATE: 2/23/84 TICKET #4200  
CUSTOMER: BEREXCO INC. LEASE: PRATHER  
WELL: 1 TEST: 7 GEOLOGIST: ?  
ELEVATION (KB): 1980 FORMATION: VIOLA  
SECTION: 12 TOWNSHIP: 29S  
RANGE: 14W COUNTY: PRATT STATE: KANSAS  
GAUGE SN #2606 RANGE: 4150 CLOCK: 12

INTERVAL TEST FROM: 4484 FT TO: 4526 FT TOTAL DEPTH: 4526 FT  
DEPTH OF SELECTIVE ZONE: FT  
PACKER DEPTH: 4479 FT SIZE: 6 3/4 IN PACKER DEPTH: 4484 FT SIZE: 6 3/4 IN  
PACKER DEPTH: FT SIZE: IN PACKER DEPTH: FT SIZE: IN

DRILLING CONTRACTOR: BEREDCO  
MUD TYPE: CHEM VISCOSITY: 48  
WEIGHT: 9.0 WATER LOSS (CC): 15.4  
CHLORIDES (P.P.M.): 22000  
JARS - MAKE: SERIAL NUMBER:  
DID WELL FLOW? REVERSED OUT?  
DRILL COLLAR LENGTH: 265 FT I.D.: 2.25 IN  
WEIGHT PIPE LENGTH: FT I.D.: IN  
DRILL PIPE LENGTH: 4195 FT I.D.: 3.8 IN  
TEST TOOL LENGTH: 24 FT TOOL SIZE: 5 1/2 O.D. IN  
ANCHOR LENGTH: 42 FT SIZE: 5 1/2 O.D. IN  
SURFACE CHOKE SIZE: 3/4 IN BOTTOM CHOKE SIZE: 3/4 IN  
MAIN HOLE SIZE: 7 7/8 IN TOOL JOINT SIZE: 4 1/2 XH IN

BLOW: INITIAL FLOW PERIOD WEAK TO LIGHT  
BLOW.

RECOVERED: 600 FT OF: GAS ABOVE FLUID.  
RECOVERED: 40 FT OF: GAS CUT MUD.  
RECOVERED: FT OF:  
RECOVERED: FT OF:  
RECOVERED: FT OF:  
RECOVERED: FT OF:  
RECOVERED: FT OF:  
RECOVERED: FT OF:  
RECOVERED: FT OF:  
RECOVERED: FT OF:

REMARKS:

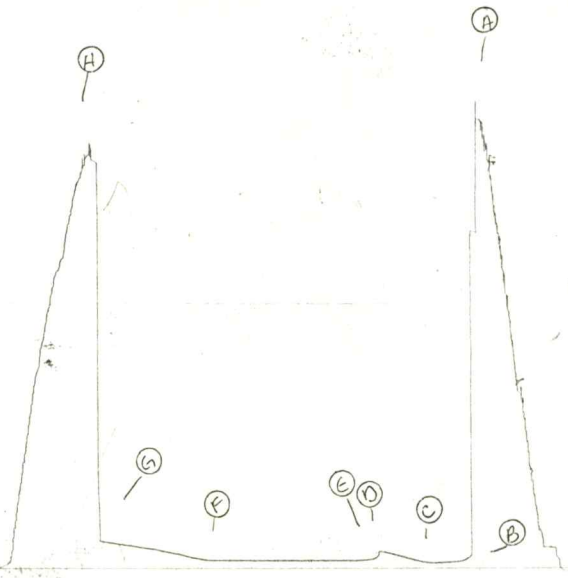
TIME SET PACKER(S): 1:15 P.M. TIME STARTED OFF BOTTOM: 6:00 P.M.  
WELL TEMPERATURE: 125 °F  
INITIAL HYDROSTATIC PRESSURE: (A) 2393 PSI  
INITIAL FLOW PERIOD MIN: 30 (B) 69 PSI TO (C) 31 PSI  
INITIAL CLOSED IN PERIOD MIN: 39 (D) 92 PSI  
FINAL FLOW PERIOD MIN: 125 (E) 64 PSI TO (F) 45 PSI  
FINAL CLOSED IN PERIOD MIN: 78 (G) 148 PSI  
FINAL HYDROSTATIC PRESSURE (H) 2182 PSI



2406 WTH

TRK# 4200

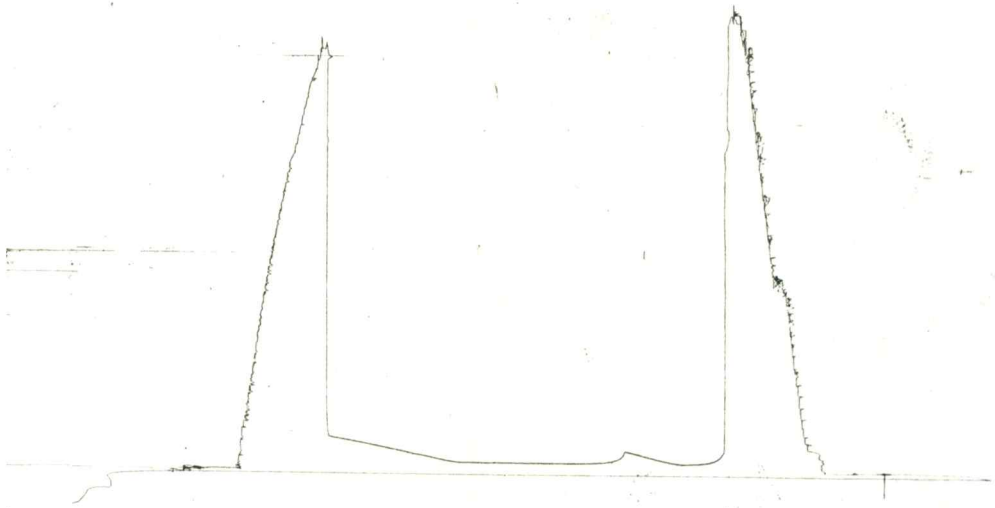
I



1241 1011

411# 4200

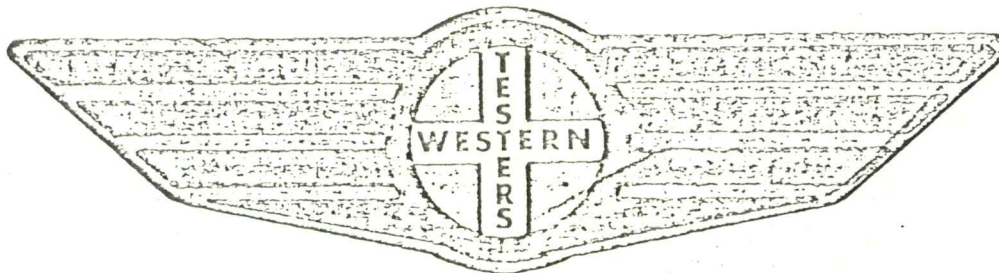
0



# FORMATION

# TEST

# REPORT



Home Office:

Wichita, Kansas 67201

P.O. Box 1599

Phone (316) 262-5861

WESTERN TESTING CO. INC.  
SUBSURFACE PRESSURE SURVEY

DATE: 2/24/84 TICKET #4326  
CUSTOMER: BEREXCO INC. LEASE: PRATHER  
WELL: 1 TEST: 8 GEOLOGIST: ?  
ELEVATION (KB): 1980 FORMATION: VIOLA-SIMPSON  
SECTION: 12 TOWNSHIP: 29S  
RANGE: 14W COUNTY: PRATT STATE: KANSAS  
GAUGE SN #2606 RANGE: 4150 CLOCK: 12

INTERVAL TEST FROM: 4580 FT TO: 4597 FT TOTAL DEPTH: 4597 FT  
DEPTH OF SELECTIVE ZONE: FT  
PACKER DEPTH: 4575 FT SIZE: 6 3/4 IN PACKER DEPTH: 4580 FT SIZE: 6 3/4 IN  
PACKER DEPTH: FT SIZE: IN PACKER DEPTH: FT SIZE: IN

DRILLING CONTRACTOR: BEREDCO  
MUD TYPE: CHEM VISCOSITY: 45  
WEIGHT: 9.2 WATER LOSS (CC): 11.2  
CHLORIDES (P.P.M.): 20000  
JARS - MAKE: SERIAL NUMBER:  
DID WELL FLOW? REVERSED OUT?  
DRILL COLLAR LENGTH: 265 FT I.D.: 2.25 IN  
WEIGHT PIPE LENGTH: FT I.D.: IN  
DRILL PIPE LENGTH: 4291 FT I.D.: 3.8 IN  
TEST TOOL LENGTH: 24 FT TOOL SIZE: 5 1/2 O.D. IN  
ANCHOR LENGTH: 17 FT SIZE: 5 1/2 O.D. IN  
SURFACE CHOKE SIZE: 3/4 IN BOTTOM CHOKE SIZE: 3/4 IN  
MAIN HOLE SIZE: 7 7/8 IN TOOL JOINT SIZE: 4 1/2 FH IN

BLOW: BOTH INITIAL & FINAL FLOW PERIODS  
HAD WEAK TO LIGHT BLOW WITH 3"  
IN WATER.

RECOVERED: 650 FT OF: WATER; CHLORIDES 48000 P.P.M.  
RECOVERED: FT OF:  
RECOVERED: FT OF:  
RECOVERED: FT OF:  
RECOVERED: FT OF:  
RECOVERED: FT OF:  
RECOVERED: FT OF:  
RECOVERED: FT OF:  
RECOVERED: FT OF:  
RECOVERED: FT OF:

REMARKS:

TIME SET PACKER(S): 10:30 A.M. TIME STARTED OFF BOTTOM: 3:15 P.M.  
WELL TEMPERATURE: 126 °F  
INITIAL HYDROSTATIC PRESSURE: (A) 2381 PSI  
INITIAL FLOW PERIOD MIN: 30 (B) 83 PSI TO (C) 139 PSI  
INITIAL CLOSED IN PERIOD MIN: 45 (D) 1084 PSI  
FINAL FLOW PERIOD MIN: 120 (E) 189 PSI TO (F) 290 PSI  
FINAL CLOSED IN PERIOD MIN: 84 (G) 1085 PSI  
FINAL HYDROSTATIC PRESSURE (H) 2251 PSI



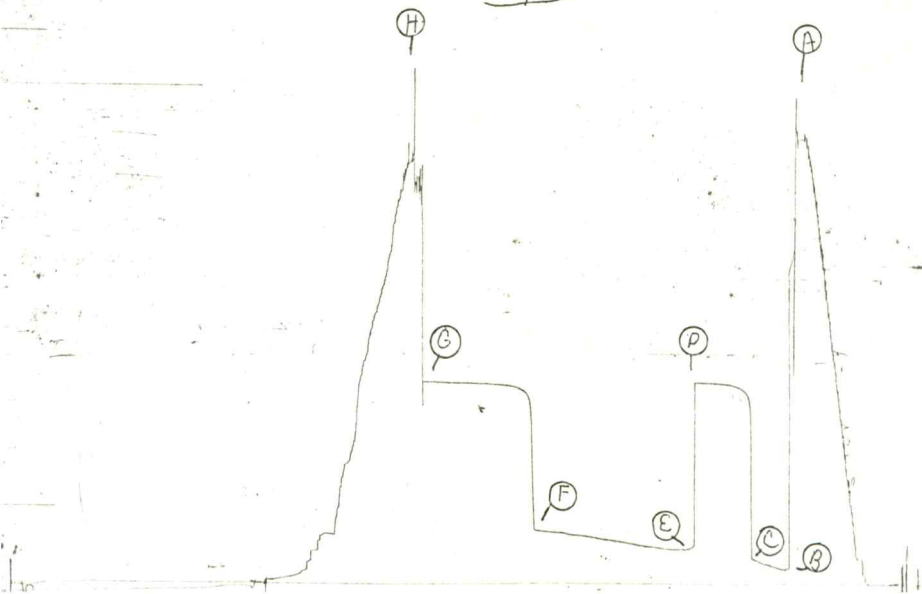
2600

US 1-1

TKT # 4326

---

I



13261. WV #0

TKT # 4326

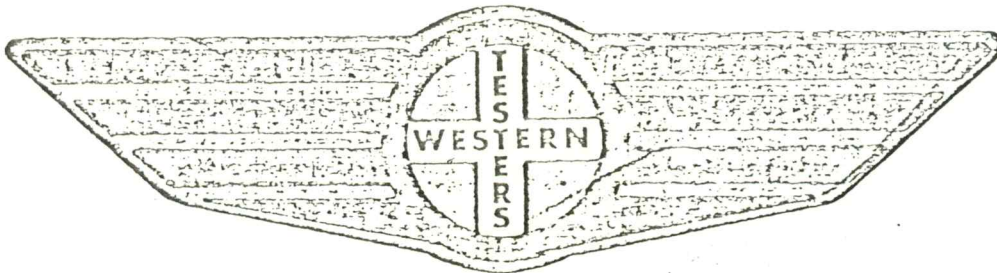
0



FORMATION

TEST

REPORT



Home Office:

Wichita, Kansas 67201

P.O. Box 1599

Phone (316) 262-5861

Company

BEREXCO, INC.

Lease and Well No.

#1 PRATHER

Sec.

12

Twp.

29S

Rge.

14W

Test No.

9

Date 2/25/81

WESTERN TESTING CO. INC.  
SUBSURFACE PRESSURE SURVEY

DATE: 2/25/84 TICKET #4327  
CUSTOMER: BEREXCO INC. LEASE: PRATHER  
WELL: 1 TEST: 9 GEOLOGIST: ?  
ELEVATION (KB): 1980 FORMATION: SIMPSON SD  
SECTION: 12 TOWNSHIP: 29S  
RANGE: 14W COUNTY: PRATT STATE: KANSAS  
GAUGE SN #2606 RANGE: 4150 CLOCK: 12

INTERVAL TEST FROM: 4603 FT TO: 4608 FT TOTAL DEPTH: 4608 FT  
DEPTH OF SELECTIVE ZONE: FT  
PACKER DEPTH: 4598 FT SIZE: 6 3/4 IN PACKER DEPTH: 4603 FT SIZE: 6 3/4 IN  
PACKER DEPTH: FT SIZE: IN PACKER DEPTH: FT SIZE: IN

DRILLING CONTRACTOR: BEREDCO  
MUD TYPE: CHEM VISCOSITY: 46  
WEIGHT: 9.3 WATER LOSS (CC): 13.5  
CHLORIDES (P.P.M.): 20000  
JARS - MAKE: SERIAL NUMBER:  
DID WELL FLOW? REVERSED OUT?  
DRILL COLLAR LENGTH: 265 FT I.D.: 2.25 IN  
WEIGHT PIPE LENGTH: FT I.D.: IN  
DRILL PIPE LENGTH: 4306 FT I.D.: 3.8 IN  
TEST TOOL LENGTH: 32 FT TOOL SIZE: 5 1/2 O.D. IN  
ANCHOR LENGTH: 5 FT SIZE: 5 1/2 O.D. IN  
SURFACE CHOKE SIZE: 3/4 IN BOTTOM CHOKE SIZE: 3/4 IN  
MAIN HOLE SIZE: 7 7/8 IN TOOL JOINT SIZE: 4 1/2 FH IN

BLOW: INITIAL FLOW PERIOD WEAK BLOW.  
FINAL FLOW PERIOD WEAK TO VERY WEAK.

RECOVERED: 220 FT OF: WATER; CHLORIDES 44000 P.P.M.  
RECOVERED: FT OF:  
RECOVERED: FT OF:  
RECOVERED: FT OF:  
RECOVERED: FT OF:  
RECOVERED: FT OF:  
RECOVERED: FT OF:  
RECOVERED: FT OF:  
RECOVERED: FT OF:  
RECOVERED: FT OF:

REMARKS: RAN A.P. HANGER ABOVE PACKERS.

TIME SET PACKER(S): 3:20 A.M. TIME STARTED OFF BOTTOM: 8:05 A.M.  
WELL TEMPERATURE: 126 °F  
INITIAL HYDROSTATIC PRESSURE: (A) 2410 PSI  
INITIAL FLOW PERIOD MIN: 30 (B) 34 PSI TO (C) 42 PSI  
INITIAL CLOSED IN PERIOD MIN: 42 (D) 1002 PSI  
FINAL FLOW PERIOD MIN: 120 (E) 67 PSI TO (F) 113 PSI  
FINAL CLOSED IN PERIOD MIN: 84 (G) 978 PSI  
FINAL HYDROSTATIC PRESSURE (H) 2211 PSI

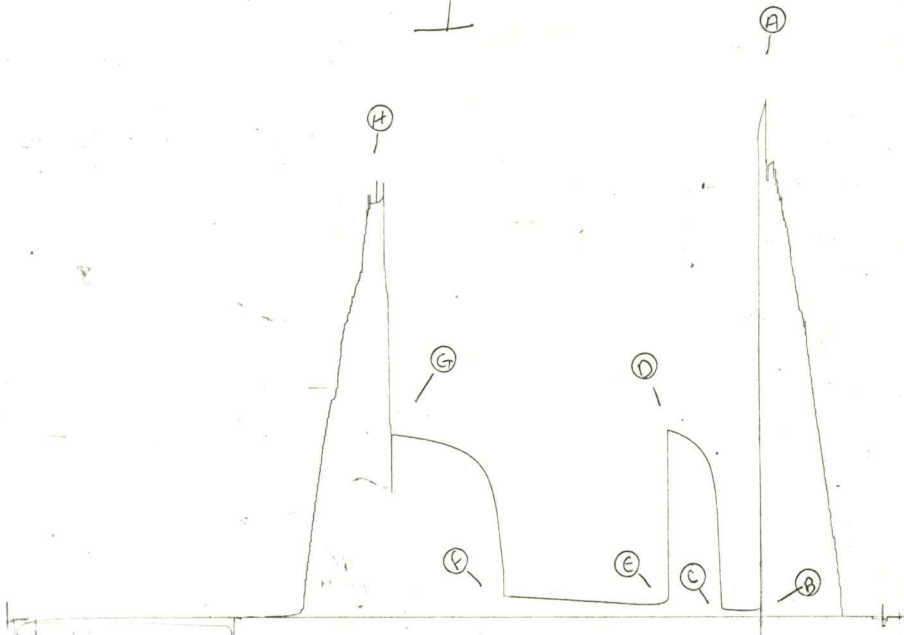


2606

15171

tick# 4327

I



15200 10000

tick# 4327

0

