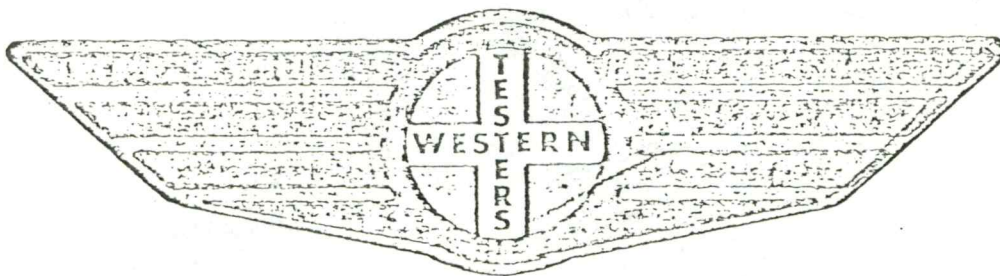


FORMATION

TEST

REPORT



Home Office:

Wichita, Kansas 67201

P.O. Box 1599

Phone (316) 262-5861

Company _____ Lease and Well No. _____ Sec. _____ Twp. _____ Rge. _____ Test No. _____ Date _____

WESTERN TESTING CO. INC.
SUBSURFACE PRESSURE SURVEY

DATE: 8/22/84 TICKET #5657
CUSTOMER: PAN-WESTERN ENERGY CORP. LEASE: GULF UNIT
WELL: 1 TEST: 1 GEOLOGIST: MCINTIRE
ELEVATION (KB): 2012 FORMATION: MISSISSIPPI
SECTION: 10 TOWNSHIP: 19S
RANGE: 16W COUNTY: KIOWA STATE: KANSAS
GAUGE SN #2606 RANGE: 4150 CLOCK: 12

INTERVAL TEST FROM: 4656 FT TO: 4665 FT TOTAL DEPTH: 4665 FT
DEPTH OF SELECTIVE ZONE: FT
PACKER DEPTH: 4651 FT SIZE: 6 5/8 IN PACKER DEPTH: 4656 FT SIZE: 6 5/8 IN
PACKER DEPTH: FT SIZE: IN PACKER DEPTH: FT SIZE: IN

DRILLING CONTRACTOR: SLAWSON DRLG
MUD TYPE: DRISPAC VISCOSITY: 41
WEIGHT: 9.2 WATER LOSS (CC): 10.7
CHLORIDES (P.P.M.): 12000
JARS - MAKE: WTC SERIAL NUMBER: 409
DID WELL FLOW? NO REVERSED OUT? NO
DRILL COLLAR LENGTH: 396 FT I.D.: 2.25 IN
WEIGHT PIPE LENGTH: FT I.D.: IN
DRILL PIPE LENGTH: 4232 FT I.D.: 3.8 IN
TEST TOOL LENGTH: 28 FT TOOL SIZE: 5 1/2 OD IN
ANCHOR LENGTH: 9 FT SIZE: 5 1/2 OD IN
SURFACE CHOKE SIZE: 3/4 IN BOTTOM CHOKE SIZE: 3/4 IN
MAIN HOLE SIZE: 7 7/8 IN TOOL JOINT SIZE: 4 1/2 FH IN

BLOW: INITIAL FLOW PERIOD VERY WEAK
BLOW FOR 25 MINUTES.
FINAL FLOW PERIOD VERY WEAK BLOW
FOR 15 MINUTES.

RECOVERED: 25 FT OF: OIL SPOTTED MUD.
RECOVERED: FT OF:
RECOVERED: FT OF:
RECOVERED: FT OF:
RECOVERED: FT OF:
RECOVERED: FT OF:
RECOVERED: FT OF:
RECOVERED: FT OF:
RECOVERED: FT OF:
RECOVERED: FT OF:

REMARKS:

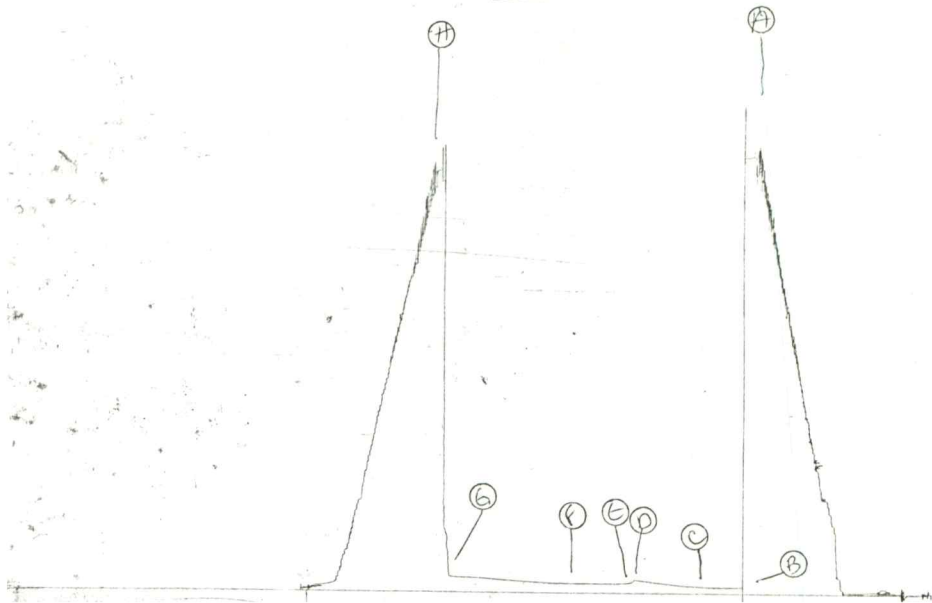
TIME SET PACKER(S): 7:40 PM TIME STARTED OFF BOTTOM: 11:25 PM
WELL TEMPERATURE: 130 °F
INITIAL HYDROSTATIC PRESSURE: (A) 2342 PSI
INITIAL FLOW PERIOD MIN: 30 (B) 31 PSI TO (C) 32 PSI
INITIAL CLOSED IN PERIOD MIN: 51 (D) 70 PSI
FINAL FLOW PERIOD MIN: 45 (E) 50 PSI TO (F) 50 PSI
FINAL CLOSED IN PERIOD MIN: 90 (G) 84 PSI
FINAL HYDROSTATIC PRESSURE (H) 2270 PSI

2606 1251 #1

JCLC# 5657

7

I



13267 DST #1

TRK# 5657

7

0

