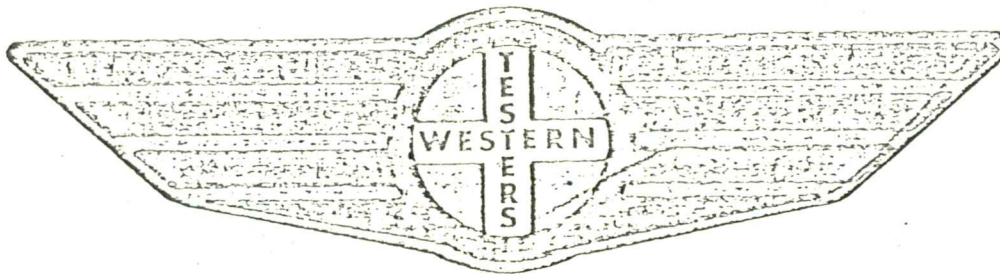


FORMATION

TEST

REPORT



Home Office:

Wichita, Kansas 67201

P.O. Box 1599

Phone (316) 262-5861

Company \_\_\_\_\_ PETROLEUM, INC.  
Lease and Well No. \_\_\_\_\_ #4 "D" NICHOLS  
Sec. \_\_\_\_\_ 20 Twp. \_\_\_\_\_ 29S Rge. \_\_\_\_\_ 18W Test No. \_\_\_\_\_ 1 Date 6/5/84

WESTERN TESTING CO. INC.  
SUBSURFACE PRESSURE SURVEY

DATE: 6/5/84  
CUSTOMER: PETROLEUM INC.  
WELL: 4  
ELEVATION (KB): 2252  
SECTION: 20  
RANGE: 18W  
GAUGE SN #13553

TEST: 1  
FORMATION: LANSING  
TOWNSHIP: 29S  
COUNTY: KIOWA  
RANGE: 4025

TICKET #3888  
LEASE: "D" NICHOLS  
GEOLOGIST: HAMLIN  
STATE: KANSAS  
CLOCK: 12

INTERVAL TEST FROM: 4338 FT TO: 4358 FT TOTAL DEPTH: 4358 FT  
DEPTH OF SELECTIVE ZONE: FT  
PACKER DEPTH: 4333 FT SIZE: 6 5/8 IN PACKER DEPTH: 4338 FT SIZE: 6 5/8 IN  
PACKER DEPTH: FT SIZE: IN PACKER DEPTH: FT SIZE: IN

DRILLING CONTRACTOR: BEREDCO DRLG  
MUD TYPE: CHEMICAL VISCOSITY: 43  
WEIGHT: 9.5 WATER LOSS (CC): 13.6  
CHLORIDES (P.P.M.): 7000  
JARS - MAKE: SERIAL NUMBER:  
DID WELL FLOW? REVERSED OUT?  
DRILL COLLAR LENGTH: 266 FT I.D.: 2.2 IN  
WEIGHT PIPE LENGTH: FT I.D.: IN  
DRILL PIPE LENGTH: 4051 FT I.D.: 3.8 IN  
TEST TOOL LENGTH: 21 FT TOOL SIZE: 5 1/2 OD IN  
ANCHOR LENGTH: 20 FT SIZE: 5 1/2 OD IN  
SURFACE CHOKE SIZE: 3/4 IN BOTTOM CHOKE SIZE: 3/4 IN  
MAIN HOLE SIZE: 7 7/8 IN TOOL JOINT SIZE: 4 1/2 XH IN

BLOW: STRONG BLOW THROUGHOUT TEST.  
GAS TO SURFACE IN 2 MINUTES.  
SEE ATTACHED SHEET FOR GAS MEASUREMENTS.

RECOVERED: 15 FT OF: GASSY MUD.  
RECOVERED: FT OF:  
RECOVERED: FT OF:  
RECOVERED: FT OF:  
RECOVERED: FT OF:  
RECOVERED: FT OF:  
RECOVERED: FT OF:  
RECOVERED: FT OF:  
RECOVERED: FT OF:  
RECOVERED: FT OF:

REMARKS:

TIME SET PACKER(S): 12:30 AM TIME STARTED OFF BOTTOM: 4:15 AM  
WELL TEMPERATURE: 118 °F  
INITIAL HYDROSTATIC PRESSURE: (A) 2205 PSI  
INITIAL FLOW PERIOD MIN: 15 (B) 442 PSI TO (C) 461 PSI  
INITIAL CLOSED IN PERIOD MIN: 30 (D) 1534 PSI  
FINAL FLOW PERIOD MIN: 60 (E) 464 PSI TO (F) 484 PSI  
FINAL CLOSED IN PERIOD MIN: 120 (G) 1536 PSI  
FINAL HYDROSTATIC PRESSURE (H) 2138 PSI





WESTERN TESTING CO. INC.  
GAS FLOW REPORT

DATE: 6/5/84  
CUSTOMER: PETROLEUM 'INC.  
WELL: 4  
ELEVATION (KB): 2252  
SECTION: 20  
RANGE: 18W  
GAUGE SN #13553

TEST: 1  
FORMATION: LANSING  
TOWNSHIP: 29S  
COUNTY: KIOWA  
RANGE: 4025

TICKET #3888  
LEASE: "D" NICHOLS  
GEOLOGIST: HAMLIN  
STATE: KANSAS  
CLOCK: 12

TIME GAUGE (MIN)	TESTER TYPE	ORIFICE SIZE	PRESSURE (PSI)	FLOW DESCRIPTION
---------------------	-------------	-----------------	-------------------	------------------

PRE FLOW

5	WALTER REED	2	8 LBS.	2060000 CFPD
10			10	2310000
15			14	2740000

SECOND FLOW

10	WALTER REED	2	15 LBS.	2830000 CFPD
20			16	2930000
30			16	2930000
40			16	2930000
50			16	2930000
60			16	2930000

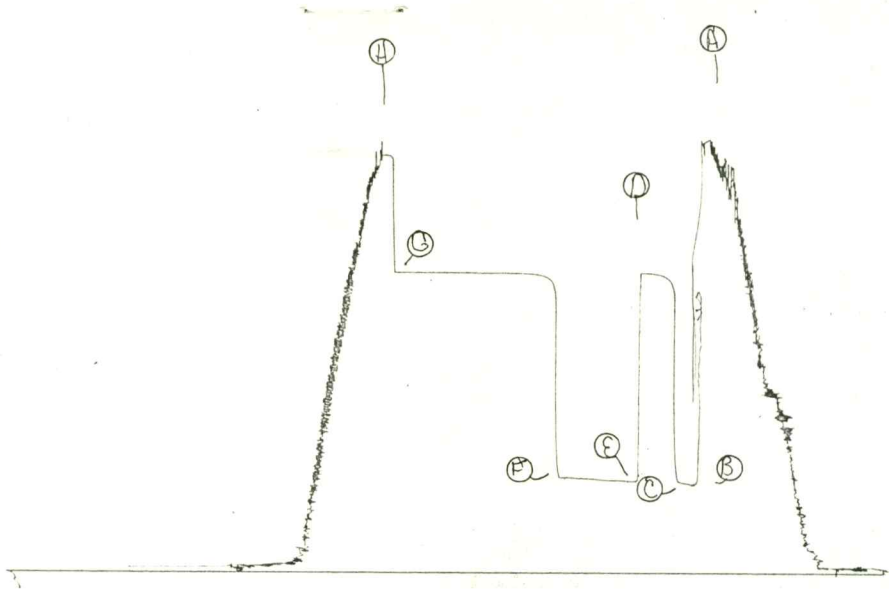
GAS BOTTLE SN #: 90  
DATE BOTTLE FILLED: 6/5/84  
DATE TO BE INVOICED: 6/5/84

TKI # 3888

---

I

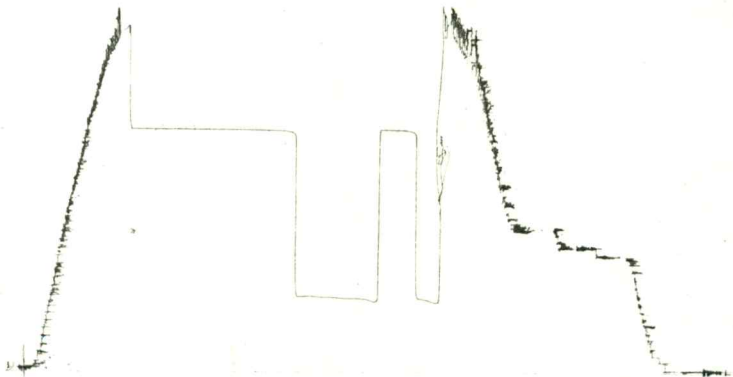
13550



TK7 # 3888

---

O

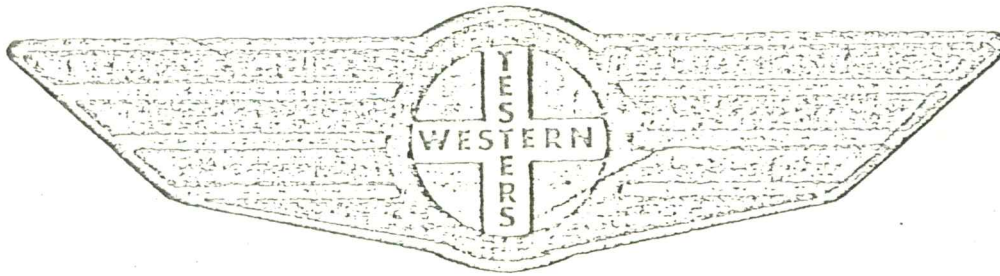


6077

# FORMATION

## TEST

### REPORT



Home Office:

Wichita, Kansas 67201

P.O. Box 1599

Phone (316) 262-5861

Company \_\_\_\_\_ PETROLEUM, INC. \_\_\_\_\_ Lease and Well No. \_\_\_\_\_ #4 "D" NICHOLS \_\_\_\_\_ Sec. 20 Twp. 29S Rge. 18W Test No. 4 Date 6/8/84

WESTERN TESTING CO, INC.  
SUBSURFACE PRESSURE SURVEY

DATE: 6/8/84  
CUSTOMER: PETROLEUM INC.  
WELL: 4 TEST: 4  
ELEVATION (KB): 2252 FORMATION:  
SECTION: 20 TOWNSHIP: 29S  
RANGE: 18W COUNTY: KIOWA STATE: KANSAS  
GAUGE SN #6077 RANGE: 4700 CLOCK: 12

TICKET #3891  
LEASE: "D" NICHOLS  
GEOLOGIST: HAMLIN

INTERVAL TEST FROM: 4565 FT TO: 4582 FT TOTAL DEPTH: 4582 FT  
DEPTH OF SELECTIVE ZONE: FT  
PACKER DEPTH: 4560 FT SIZE: 6 5/8 IN PAKER DEPTH: 4565 FT SIZE: 6 5/8 IN  
PACKER DEPTH: FT SIZE: IN PAKER DEPTH: FT SIZE: IN

DRILLING CONTRACTOR: BEREDCO DRLG  
MUD TYPE: CHEM-DRIS VISCOSITY: 47  
WEIGHT: 9.7 WATER LOSS (CC): 14.4  
CHLORIDES (P.P.M.): 11000  
JARS - MAKE: SERIAL NUMBER:  
DID WELL FLOW? REVERSED OUT?  
DRILL COLLAR LENGTH: 266 FT I.D.: 2.2 IN  
WEIGHT PIPE LENGTH: FT I.D.: IN  
DRILL PIPE LENGTH: 4278 FT I.D.: 3.8 IN  
TEST TOOL LENGTH: 21 FT TOOL SIZE: 5 1/2 OD IN  
ANCHOR LENGTH: 17 FT SIZE: 5 1/2 OD IN  
SURFACE CHOKE SIZE: 3/4 IN BOTTOM CHOKE SIZE: 3/4 IN  
MAIN HOLE SIZE: 7 7/8 IN TOOL JOINT SIZE: 4 1/2 XH IN

BLOW: INITIAL FLOW PERIOD INCREASING BLOW TO OFF  
BOTTOM OF BUCKET IN 4 1/2 MINUTES.  
FINAL FLOW PERIOD OFF BOTTOM OF BUCKET.

RECOVERED: 15 FT OF: CLEAN GASSY OIL.  
RECOVERED: 90 FT OF: OIL & GAS CUT WATERY MUD.  
RECOVERED: FT OF: 48% GAS; 18% OIL; 25% MUD; 9% WATER.  
RECOVERED: 90 FT OF: SLIGHTLY OIL & GAS CUT MUDDY WATER.  
RECOVERED: FT OF: 45% GAS; 10% OIL; 18% MUD; 27% WATER.  
RECOVERED: FT OF: CHLORIDES 53000 PPM.  
RECOVERED: FT OF:  
RECOVERED: FT OF:  
RECOVERED: FT OF:

REMARKS: GAS TO SURFACE DURING FINAL SHUT-IN.

TIME SET PACKER(S): 6:00 AM TIME STARTED OFF BOTTOM: 9:45 AM  
WELL TEMPERATURE: 120 °F  
INITIAL HYDROSTATIC PRESSURE: (A) 2292 PSI  
INITIAL FLOW PERIOD MIN: 15 (B) 44 PSI TO (C) 48 PSI  
INITIAL CLOSED IN PERIOD MIN: 30 (D) 1013 PSI  
FINAL FLOW PERIOD MIN: 60 (E) 61 PSI TO (F) 85 PSI  
FINAL CLOSED IN PERIOD MIN: 120 (G) 1068 PSI  
FINAL HYDROSTATIC PRESSURE (H) 2276 PSI

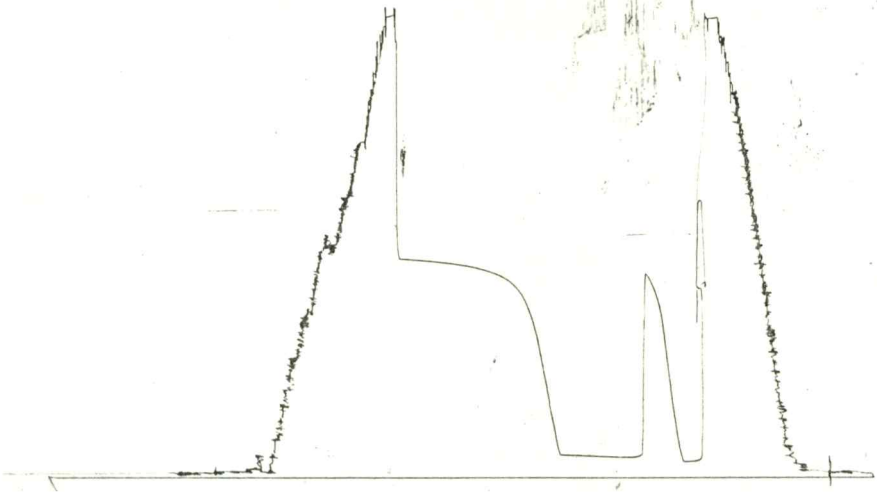




TKT # 3891

---

I

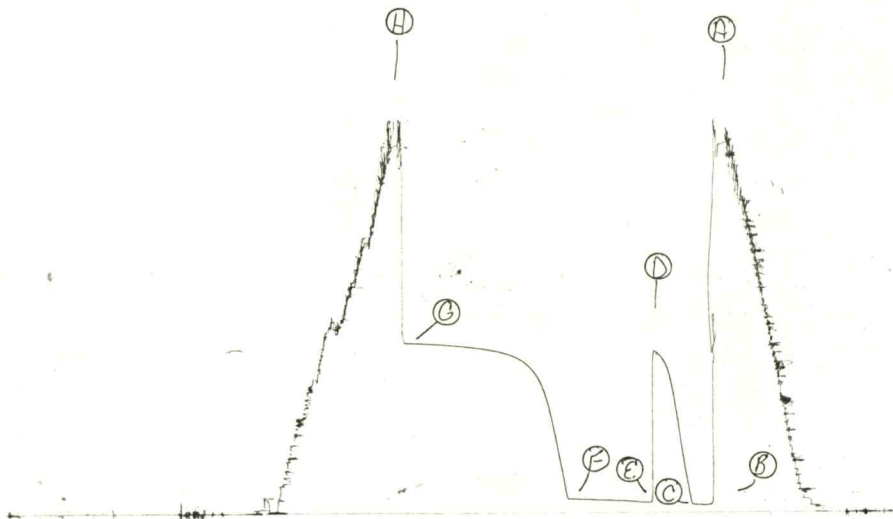


13553

TKT # 3891

---

0

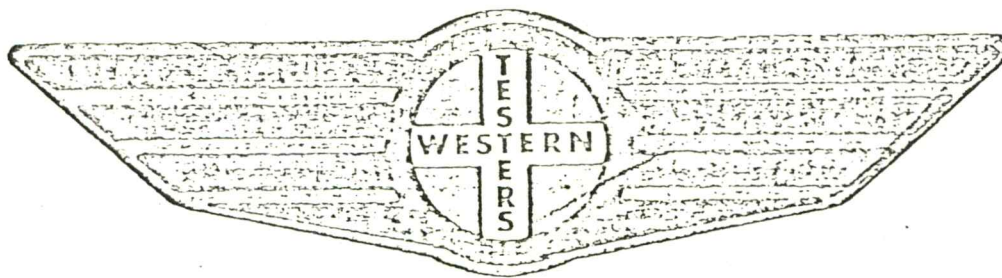


1109

FORMATION

TEST

REPORT



Home Office:

Wichita, Kansas 67201

P.O. Box 1599

Phone (316) 262-5861

Company \_\_\_\_\_  
Lease and Well No. \_\_\_\_\_  
#4 D NUBHLS \_\_\_\_\_  
Sec. 40 Twp. 29S Rge. 18W Test No. 3 Date 6/9/84

WESTERN TESTING COMPANY INC.  
SUBSURFACE PRESSURE SURVEY

DATE: 6/9/84  
CUSTOMER: PETROLEUM INC.  
WELL: 4 TEST: 5  
ELEVATION (KB): 2252 FORMATION:  
SECTION: 20 TOWNSHIP: 29S  
RANGE: 18W COUNTY: KIOWA STATE: KANSAS  
GAUGE SN #13553 RANGE: 4025 CLOCK: 12

INTERVAL TEST FROM: 4670 FT TO: 4695 FT TOTAL DEPTH: 4695 FT  
DEPTH OF SELECTIVE ZONE: FT  
PACKER DEPTH: 4665 FT SIZE: 6 5/8 IN PACKER DEPTH: 4670 FT SIZE: 6 5/8 IN  
PACKER DEPTH: FT SIZE: IN PACKER DEPTH: FT SIZE: IN

DRILLING CONTRACTOR: BEREDCO  
MUD TYPE: CHEMICAL VISCOSITY: 47  
WEIGHT: 9.7 WATER LOSS (CC): 14.4  
CHLORIDES (P.P.M.): 11000  
JARS - MAKE: SERIAL NUMBER:  
DID WELL FLOW? NO REVERSED OUT?  
DRILL COLLAR LENGTH: 266 FT I.D.: 2.25 IN  
WEIGHT PIPE LENGTH: FT I.D.: IN  
DRILL PIPE LENGTH: 4383 FT I.D.: 3.8 IN  
TEST TOOL LENGTH: 21 FT TOOL SIZE: 5 1/2 O.D. IN  
ANCHOR LENGTH: 25 FT SIZE: 5 1/2 O.D. IN  
SURFACE CHOKE SIZE: 3/4 IN BOTTOM CHOKE SIZE: 3/4 IN  
MAIN HOLE SIZE: 7 7/8 IN TOOL JOINT SIZE: 4 1/2 X.H. IN

BLOW: INITIAL FLOW PERIOD; FAIR INCREASING TO GOOD;  
8 1/2 INCH BLOW. FINAL FLOW PERIOD; STRONG; OFF  
BOTTOM OF BUCKET AT OPENING.

RECOVERED: 45 FT OF: VERY SLIGHTLY OIL CUT GASSY MUD; LESS THAN 3% OIL  
RECOVERED: 90 FT OF: SLIGHTLY OIL CUT GASSY MUD; 12% OIL  
RECOVERED: FT OF:  
RECOVERED: FT OF:  
RECOVERED: FT OF:  
RECOVERED: FT OF:  
RECOVERED: FT OF:  
RECOVERED: FT OF:  
RECOVERED: FT OF:

REMARKS: HIT BRIDGE WHILE GOING IN HOLE.

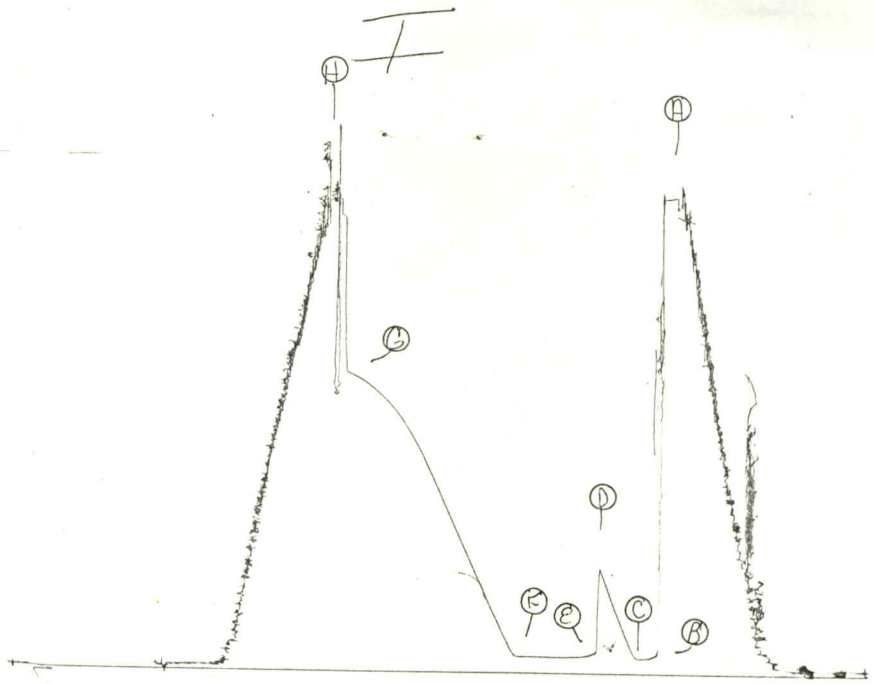
TIME SET PACKER(S): 3:15 A.M. TIME STARTED OFF BOTTOM: 7:00 A.M.

WELL TEMPERATURE: 121 °F  
INITIAL HYDROSTATIC PRESSURE: (A) 2441 PSI  
INITIAL FLOW PERIOD MIN: 15 (B) 77 PSI TO (C) 77 PSI  
INITIAL CLOSED IN PERIOD MIN: 30 (D) 537 PSI  
FINAL FLOW PERIOD MIN: 60 (E) 84 PSI TO (F) 87 PSI  
FINAL CLOSED IN PERIOD MIN: 126 (G) 1538 PSI  
FINAL HYDROSTATIC PRESSURE (H) 2441 PSI





TK1 #3842

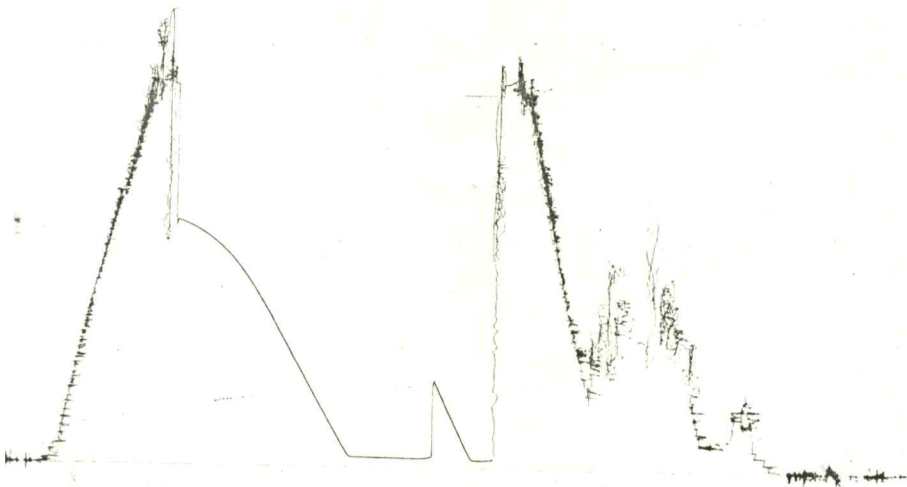


13553

TK7 # 3892

---

0



1.109