

**IMPORTANT**  
Kans. Geo. Survey request  
samples on this well.

15-057-20,143

**KANSAS DRILLERS LOG**

S. 25 T. 29 R. 21 <sup>E</sup>/<sub>W</sub>  
Loc. NE SW SE  
County Ford

API No. 15 — 057 — 20,143  
County Number

Operator  
Imperial Oil Company

Address  
720 Fourth Financial Center Wichita, Kansas 67202

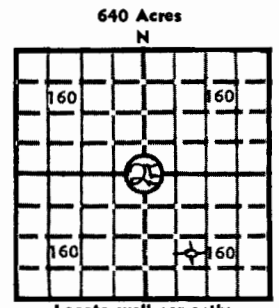
Well No. #1-25 Lease Name Seacat

Footage Location  
990 feet from (N) (S) line 1650 feet from (E) (W) line

Principal Contractor Eagle Drlg. Geologist Hal Clark

Spud Date 8/27/79 Total Depth RTD 5400 P.B.T.D.

Date Completed 9/9/79 Oil Purchaser



Locate well correctly  
Elev.: Gr. 2429  
DF \_\_\_\_\_ KB 2440'

**CASING RECORD**

Report of all strings set — surface, intermediate, production, etc.

Purpose of string	Size hole drilled	Size casing set (in O.D.)	Weight lbs/ft.	Setting depth	Type cement	Sacks	Type and percent additives
Surface	12 1/4"	8 5/8"	24#	612'	Howco Lite	200	3% CC
					Common	150	3% CC, 2% gel
					Common	50	3% CC, 2% gel

**LINER RECORD**

**PERFORATION RECORD**

Top, ft.	Bottom, ft.	Sacks cement	Shots per ft.	Size & type	Depth interval

**TUBING RECORD**

Size	Setting depth	Packer set at

**ACID, FRACTURE, SHOT, CEMENT SQUEEZE RECORD**

Amount and kind of material used	Depth interval treated

**INITIAL PRODUCTION**

Date of first production \_\_\_\_\_ Producing method (flowing, pumping, gas lift, etc.) \_\_\_\_\_

RATE OF PRODUCTION PER 24 HOURS	Oil	Gas	Water	Gas-oil ratio
	bbls.	MCF	bbls.	CFPB
Disposition of gas (vented, used on lease or sold)			Producing interval (s)	

INSTRUCTIONS: As provided in KCC Rule 82-2-125, within 90 days after completion of a well, one completed copy of this Drillers Log shall be transmitted to the State Geological Survey of Kansas, 4150 Monroe Street, Wichita, Kansas 67209. Copies of this form are available from the Conservation Division, State Corporation Commission, 3830 So. Meridian (P.O. Box 17027), Wichita, Kansas 66217. Phone AC 316-522-2206. If confidential custody is desired, please note Rule 82-2-125. Drillers Logs will be on open file in the Oil and Gas Division, State Geological Survey of Kansas, Lawrence, Kansas 66044.

Operator Imperial Oil Company		DESIGNATE TYPE OF COMP.: OIL, GAS, DRY HOLE, SWDW, ETC.:
Well No. 1-25	Lease Name SEACAT	Dry Hole
S 25 T 29 R 21 W Ford County, Kansas		

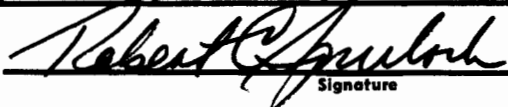
**WELL LOG**

Show all important zones of porosity and contents thereof; cored intervals, and all drill-stem tests, including depth interval tested, cushion used, time tool open, flowing and shut-in pressures, and recoveries.

SHOW GEOLOGICAL MARKERS, LOGS RUN, OR OTHER DESCRIPTIVE INFORMATION.

FORMATION DESCRIPTION, CONTENTS, ETC.	TOP	BOTTOM	NAME	DEPTH
				E-Log Tops
DST #1 5199-5226' 60/60/60/60 Rec. 25' OSM ISIP: 63# IFP: 85-42# FSIP: 42# FFP: 31-31#			Herrington	4373' (-1933)
			Brown Lime	4550' (-2110)
			Lansing	4566' (-2126)
			Stark	4883' (-2443)
			B/KC	4995' (-2555)
DST #2 5223-63' 60/120/60/120 Rec. 120' mud ISIP: 191# IFP: 117-85# FSIP: 320# FFP: 106-74#			Marmaton	5014' (-2574)
			Cherokee	5136' (-2696)
			Eros. Miss.	5260' (-2820)
			Mississippi	5276' (-2836)
			LTD	5400' (-2960)
DST #3 5362-5400' 60/120/60/120 Rec. 700' MW ISIP: 1653# IFP: 53-213# FSIP: 1653# FFP: 277-320#				

USE ADDITIONAL SHEETS, IF NECESSARY, TO COMPLETE WELL RECORD.

Date Received	
	Signature
	Attorney-in-Fact
	Title
	October 8, 1979
	Date