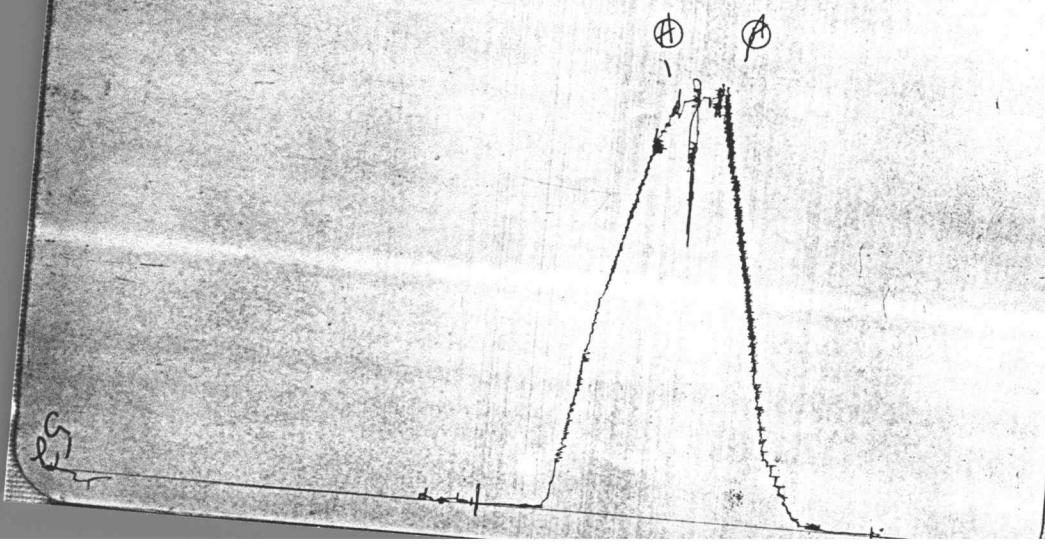


Kt # 13018

6

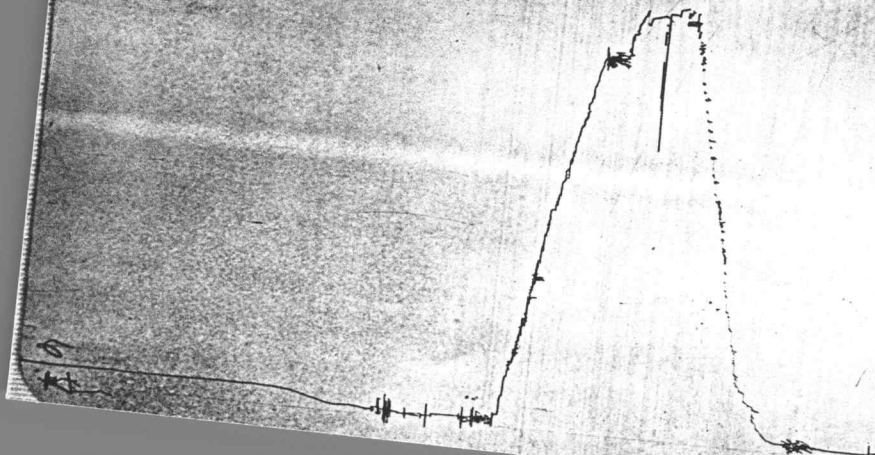
I



JK # 13018

6

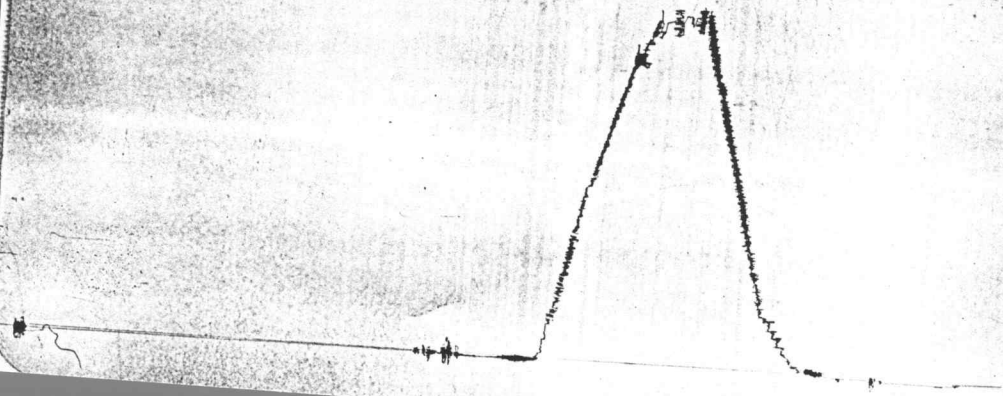
0



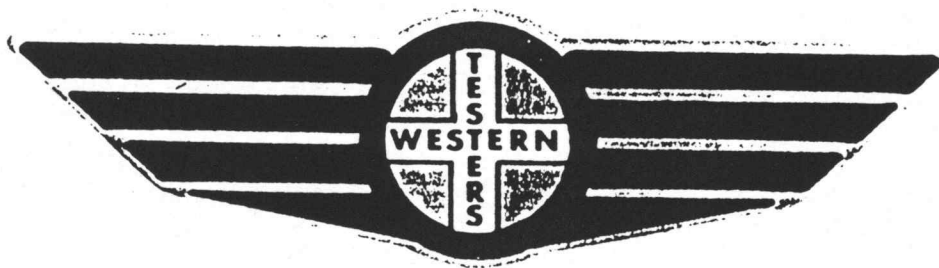
JK # 13018

6

Below Straddle



FORMATION TEST REPORT



Home Office:

Wichita, Kansas 67201

P.O. Box 1599

Phone (316) 262-5861

WESTERN TESTING CO. INC.
SUBSURFACE PRESSURE SURVEY

DATE : 12-19-87 TICKET : 13018
CUSTOMER : GLOBAL NATURAL RESOURCES CORP. LEASE : POWELL
WELL : #3 TEST: 4 GEOLOGIST : R. MEYER
ELEVATION : - FORMATION : -
SECTION : 22 TOWNSHIP : 29S
RANGE : 33W COUNTY : HASKELL STATE : KANSAS
GAUGE SN# : 13552 RANGE : 4050 CLOCK : 12

INTERVAL FROM : 4647 TO : 4673 TOTAL DEPTH : 5547
DEPTH OF SELECTIVE ZONE :
PACKER DEPTH : 4643 SIZE : 6.63
PACKER DEPTH : 4647 SIZE : 6.63
PACKER DEPTH : 4673 SIZE : 6.63
PACKER DEPTH : SIZE :

DRILLING CON. : BEREDCO RIG #7
MUD TYPE : CHEMICAL VISCOSITY : 52
WEIGHT : 9.0 WATER LOSS (CC) : 6.2
CHLORIDES (PPM) : 2000
JARS-MAKE : WTC SERIAL NUMBER : 420
DID WELL FLOW ? : NO REVERSED OUT ? : NO

DRILL COLLAR LENGTH : 650 FT I.D. inch : 2.25
WEIGHT PIPE LENGTH : 0 FT I.D. inch : 0.00
DRILL PIPE LENGTH : 3968 FT I.D. inch : 3.80
TEST TOOL LENGTH : 29 FT TOOL SIZE : 5.50
ANCHOR LENGTH : 900 FT ANCHOR SIZE : 5.50
SURFACE CHOKE SIZE : .75 IN BOTTOM CHOKE SIZE : .75
MAIN HOLE SIZE : 7.875 IN TOOL JOINT SIZE : 4.5 XH

BLOW COMMENT #1 :
BLOW COMMENT #2 :
BLOW COMMENT #3 :
BLOW COMMENT #4 :

RECOVERED : 1050 FT OF: DRILLING MUD

Total Barrels Fluid = 8.81
Total Fluid Prod Rate = 0.00 BFPD

REMARK 1 : MISRUN: PACKER FAILURE.
REMARK 2 : ANCHOR = 26' + 874' TAIL PIPE
REMARK 3 :
REMARK 4 :

SET PACKER(S) : 10:10 AM
WELL TEMPERATURE : 0
INITIAL HYDROSTATIC PRESSURE
INITIAL FLOW PERIOD MIN: 0
INITIAL CLOSED IN PERIOD MIN: 0
FINAL FLOW PERIOD MIN: 0
FINAL CLOSED IN PERIOD MIN: 0
FINAL HYDROSTATIC PRESSURE

TIME STARTED OFF BOTTOM :

| | | | |
|-----|------|--------------|---|
| (A) | 2234 | | |
| (B) | 0 | PSI TO (C) : | 0 |
| (D) | 0 | | |
| (E) | 0 | PSI TO (F) : | 0 |
| (G) | 0 | | |
| (H) | 2204 | | |