

WESTERN TESTING CO. INC.
SUBSURFACE PRESSURE SURVEY

DATE: 11/27/83
CUSTOMER: RESIDEN LIMITED
WELL: 1
ELEVATION (KB): 1953
SECTION: 24
RANGE: 14W
GAUGE SN #6246

TEST: 1
FORMATION: LANSING & KC
TOWNSHIP: 29S
COUNTY: PRATT
RANGE: 5200

TICKET #3019
LEASE: KERR
GEOLOGIST: PASCHANG
STATE: KANSAS
CLOCK: 12

INTERVAL TEST FROM: 4019 FT TO: 4058 FT TOTAL DEPTH: 4058 FT
DEPTH OF SELECTIVE ZONE: FT
PACKER DEPTH: 4014 FT SIZE: 6 5/8 IN PACKER DEPTH: 4019 FT SIZE: 6 5/8 IN
PACKER DEPTH: FT SIZE: IN PACKER DEPTH: FT SIZE: IN

DRILLING CONTRACTOR: ALDERBARAN #3
MUD TYPE: CHEM VISCOSITY: 42
WEIGHT: 9.2 WATER LOSS (CC): 12.0
CHLORIDES (P.P.M.): 4000

JARS - MAKE: SERIAL NUMBER:
DID WELL FLOW? NO REVERSED OUT? NO
DRILL COLLAR LENGTH: 552 FT I.D.: 2.25 IN
WEIGHT PIPE LENGTH: FT I.D.: IN
DRILL PIPE LENGTH: 3445 FT I.D.: 3.8 IN
TEST TOOL LENGTH: 22 FT TOOL SIZE: 5 1/2 O.D. IN
ANCHOR LENGTH: 39 FT SIZE: 5 1/2 O.D. IN
SURFACE CHOKE SIZE: 3/4 IN BOTTOM CHOKE SIZE: 3/4 IN
MAIN HOLE SIZE: 7 7/8 IN TOOL JOINT SIZE: 4 1/2 XH IN

BLOW: INITIAL FLOW PERIOD STRONG & STEADY
BLOW. FINAL FLOW PERIOD GOOD STABLE
BLOW THROUGHOUT.

RECOVERED: 20	FT	OF: SLIGHTLY GAS CUT MUD
RECOVERED: 180	FT	OF: OIL & GAS CUT MUD.
RECOVERED:	FT	OF: 15% GAS; 15% OIL; 25% WTR; 45% MUD
RECOVERED: 120	FT	OF: SLIGHTLY OIL & GASSY SALT WATER
RECOVERED:	FT	OF: CHLORIDES 49000 P.P.M.
RECOVERED:	FT	OF:
RECOVERED:	FT	OF:
RECOVERED:	FT	OF:
RECOVERED:	FT	OF:

REMARKS:

TIME SET PACKER(S): 1:25 A.M.

TIME STARTED OFF BOTTOM: 4:55 A.M.

WELL TEMPERATURE: 117 °F

INITIAL HYDROSTATIC PRESSURE:

INITIAL FLOW PERIOD MIN: 30

INITIAL CLOSED IN PERIOD MIN: 57

FINAL FLOW PERIOD MIN: 60

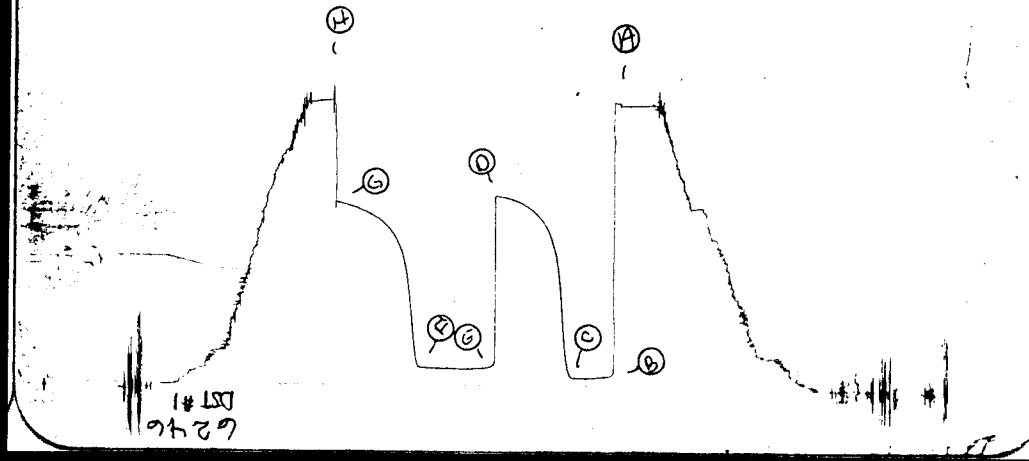
FINAL CLOSED IN PERIOD MIN: 60

FINAL HYDROSTATIC PRESSURE

(A) 1918	PSI
(B) 52	PSI TO (C) 52
(D) 1287	PSI
(E) 122	PSI TO (F) 122
(G) 1253	PSI
(H) 1910	PSI

tick # 3019

I



WESTERN TESTING CO. INC.
SUBSURFACE PRESSURE SURVEY

DATE: 11/28/83
CUSTOMER: RISEDON LIMITED
WELL: 1
ELEVATION (KB): 1763
SECTION: 24
RANGE: 14W
GAUGE SN #6246

TEST: 2
FORMATION: LANSING
TOWNSHIP: 29S
COUNTY: PRATT
RANGE: 5200

TICKET #3020
LEASE: KERR
GEOLOGIST: PASCHANG
STATE: KANSAS
CLOCK: 12

INTERVAL TEST FROM: 4093 FT TO: 4125 FT TOTAL DEPTH: 4125 FT
DEPTH OF SELECTIVE ZONE: FT
PACKER DEPTH: 4088 FT SIZE: 6 5/8 IN PAKER DEPTH: 4093 FT SIZE: 6 5/8 IN
PACKER DEPTH: FT SIZE: IN PAKER DEPTH: FT SIZE: IN

DRILLING CONTRACTOR: ALDERBARAN
MUD TYPE: CHEM VISCOSITY: 45
WEIGHT: 9.2 WATER LOSS (CC): 12.8
CHLORIDES (P.P.M.): 4000
JARS - MAKE: SERIAL NUMBER:
DID WELL FLOW? NO REVERSED OUT? NO
DRILL COLLAR LENGTH: 552 FT I.D.: 2.25 IN
WEIGHT PIPE LENGTH: FT I.D.: IN
DRILL PIPE LENGTH: 3519 FT I.D.: 3.8 IN
TEST TOOL LENGTH: 22 FT TOOL SIZE: 5 1/2 O.D. IN
ANCHOR LENGTH: 32 FT SIZE: 5 1/2 O.D. IN
SURFACE CHOKE SIZE: 3/4 IN BOTTOM CHOKE SIZE: 3/4 IN
MAIN HOLE SIZE: 7 7/8 IN TOOL JOINT SIZE: 4 FH IN

BLOW: INITIAL FLOW PERIOD WEAK BUILDING
SLOWLY TO FAIR BLOW. FINAL FLOW
PERIOD WEAK BUILDING TO WEAK STEADY
BLOW.

RECOVERED: 180	FT	OF: DRLG MUD (NO SHOW)
RECOVERED:	FT	OF:
RECOVERED:	FT	OF:
RECOVERED:	FT	OF:
RECOVERED:	FT	OF:
RECOVERED:	FT	OF:
RECOVERED:	FT	OF:
RECOVERED:	FT	OF:
RECOVERED:	FT	OF:

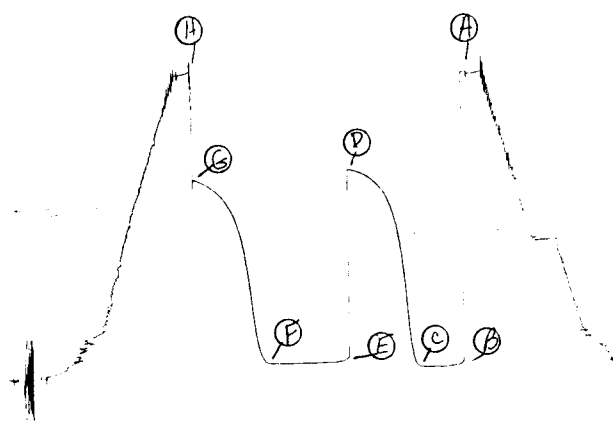
REMARKS:

TIME SET PACKER(S): 1:40 P.M.	TIME STARTED OFF BOTTOM: 2:10 A.M.
WELL TEMPERATURE: 119 °F	
INITIAL HYDROSTATIC PRESSURE:	(A) 2005 PSI
INITIAL FLOW PERIOD MIN: 30	(B) 38 PSI TO (C) 38 PSI
INITIAL CLOSED IN PERIOD MIN: 57	(D) 1363 PSI
FINAL FLOW PERIOD MIN: 60	(E) 72 PSI TO (F) 72 PSI
FINAL CLOSED IN PERIOD MIN: 57	(G) 1308 PSI
FINAL HYDROSTATIC PRESSURE	(H) 2005 PSI

TKT # 3020

DST #2

I



WESTERN TESTING CO. INC.
SUBSURFACE PRESSURE SURVEY

DATE: 11/30/83
CUSTOMER: RISEDON LTD.
WELL: 1
ELEVATION (KB): 1763
SECTION: 24
RANGE: 14W
GAUGE SN #6246

TEST: 3
COUNTY: PRATT
RANGE: 5200

FORMATION:
TOWNSHIP: 29S
STATE: KANSAS
CLOCK: 12

TICKET #3021
LEASE: KERR
GEOLOGIST:

INTERVAL TEST FROM: 4357 FT TO: 4415 FT TOTAL DEPTH: 4415 FT
DEPTH OF SELECTIVE ZONE: FT
PACKER DEPTH: 4352 FT SIZE: 6 5/8 IN PACKER DEPTH: 4357 FT SIZE: 6 5/8 IN
PACKER DEPTH: FT SIZE: IN PACKER DEPTH: FT SIZE: IN

DRILLING CONTRACTOR: ALDEBARAN DRLG.

MUD TYPE: CHEMICAL VISCOSITY: 53
WEIGHT: 9.2 WATER LOSS (CC): 13.6
CHLORIDES (P.P.M.): 7000

JARS - MAKE: NO SERIAL NUMBER:
DID WELL FLOW? NO REVERSED OUT? NO

DRILL COLLAR LENGTH: 552 FT I.D.: 2.25 IN
WEIGHT PIPE LENGTH: FT I.D.: IN
DRILL PIPE LENGTH: 3783 FT I.D.: 3.8 IN
TEST TOOL LENGTH: 22 FT TOOL SIZE: 5 1/2 O.D. IN
ANCHOR LENGTH: 58 FT SIZE: 5 1/2 O.D. IN
SURFACE CHOKE SIZE: 3/4 IN BOTTOM CHOKE SIZE: 3/4 IN
MAIN HOLE SIZE: 7 7/8 IN TOOL JOINT SIZE: 4 F.H. IN

BLOW: WEAK BLOW BUILDING SLOWLY ON INITIAL FLOW.
GOOD & STEADY BLOW THROUGHOUT FINAL FLOW.

RECOVERED: 30 FT OF: SLIGHTLY GAS CUT MUD
RECOVERED: 60 FT OF: OIL & GAS CUT MUD
RECOVERED: FT OF:
RECOVERED: FT OF:
RECOVERED: FT OF:
RECOVERED: FT OF:
RECOVERED: FT OF:
RECOVERED: FT OF:
RECOVERED: FT OF:

REMARKS:

TIME SET PACKER(S): 6:35 A.M.

TIME STARTED OFF BOTTOM: 10:05 A.M.

WELL TEMPERATURE: 120 °F

INITIAL HYDROSTATIC PRESSURE:

INITIAL FLOW PERIOD MIN: 30

INITIAL CLOSED IN PERIOD MIN: 54

FINAL FLOW PERIOD MIN: 60

FINAL CLOSED IN PERIOD MIN: 54

FINAL HYDROSTATIC PRESSURE

(A) 2122 PSI
(B) 47 PSI TO (C) 47 PSI
(D) 196 PSI
(E) 56 PSI TO (F) 63 PSI
(G) 165 PSI
(H) 2110 PSI

Company

RISEDON LIMITED

Lease and Well No.

#1 KERR

Sec. 24

Twp. 29S

Rge. 14W

Test No. 3

Date 11/30/83

WESTERN TESTING CO., INC.

Pressure Data

11-30-83

Date: _____ Test Ticker No. 3021
 Recorder No. 6246 Capacity _____ Location _____ Ft
 Clock No. _____ Elevation _____ Well Temperature _____ °F

Point	Pressure		Time Given	Time Computed
A Initial Hydrostatic Mud	<u>2122</u> P.S.I.	Open Tool		M
B First Initial Flow Pressure	<u>47</u> P.S.I.	First Flow Pressure	<u>30</u> Mins.	
C First Final Flow Pressure	<u>47</u> P.S.I.	Initial Closed-in Pressure	<u>60</u> Mins.	
D Initial Closed-in Pressure	<u>196</u> P.S.I.	Second Flow Pressure	<u>60</u> Mins.	
E Second Initial Flow Pressure	<u>54</u> P.S.I.	Final Closed-in Pressure	<u>60</u> Mins.	
F Second Final Flow Pressure	<u>63</u> P.S.I.			
G Final Closed-in Pressure	<u>165</u> P.S.I.			
H Final Hydrostatic Mud	<u>2110</u> P.S.I.			

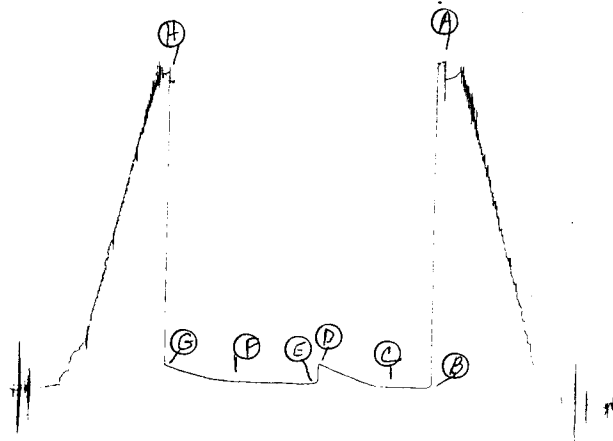
PRESSURE BREAKDOWN

First Flow Pressure		Initial Shut-In		Second Flow Pressure		Final Shut-In	
Breakdown: <u>7</u> Inc.		Breakdown: <u>19</u> Inc.		Breakdown: <u>13</u> Inc.		Breakdown: <u>19</u> Inc.	
of <u>5</u> mins. and a		of <u>3</u> mins. and a		of <u>5</u> mins. and a		of <u>3</u> mins. and a	
final inc. of <u>0</u> Min.		final inc. of <u>0</u> Min.		final inc. of <u>0</u> Min.		final inc. of <u>0</u> Min.	
Point Mins.	Press.	Point Minutes	Press.	Point Minutes	Press.	Point Minutes	Press.
P 1 <u>0</u>	<u>47</u>	<u>0</u>	<u>47</u>	<u>0</u>	<u>54</u>	<u>0</u>	<u>63</u>
P 2 <u>5</u>		<u>3</u>	<u>48</u>	<u>5</u>		<u>3</u>	<u>63</u>
P 3 <u>10</u>		<u>6</u>	<u>50</u>	<u>10</u>		<u>6</u>	<u>65</u>
P 4 <u>15</u>		<u>9</u>	<u>53</u>	<u>15</u>	<u>56</u>	<u>9</u>	<u>68</u>
P 5 <u>20</u>		<u>12</u>	<u>59</u>	<u>20</u>	<u>58</u>	<u>12</u>	<u>70</u>
P 6 <u>25</u>		<u>15</u>	<u>66</u>	<u>25</u>	<u>59</u>	<u>15</u>	<u>72</u>
P 7 <u>30</u>	<u>47</u>	<u>18</u>	<u>73</u>	<u>30</u>	<u>60</u>	<u>18</u>	<u>77</u>
P 8 <u>35</u>		<u>21</u>	<u>84</u>	<u>35</u>		<u>21</u>	<u>84</u>
P 9 <u>40</u>		<u>24</u>	<u>94</u>	<u>40</u>		<u>24</u>	<u>90</u>
P10 <u>45</u>		<u>27</u>	<u>106</u>	<u>45</u>	<u>160</u>	<u>27</u>	<u>98</u>
P11 <u>50</u>		<u>30</u>	<u>118</u>	<u>50</u>	<u>161</u>	<u>30</u>	<u>105</u>
P12 <u>55</u>		<u>33</u>	<u>126</u>	<u>55</u>	<u>162</u>	<u>33</u>	<u>113</u>
P13 <u>60</u>		<u>36</u>	<u>140</u>	<u>60</u>	<u>163</u>	<u>36</u>	<u>119</u>
P14		<u>39</u>	<u>149</u>	<u>65</u>		<u>39</u>	<u>126</u>
P15		<u>42</u>	<u>160</u>	<u>70</u>		<u>42</u>	<u>134</u>
P16		<u>45</u>	<u>171</u>	<u>75</u>		<u>45</u>	<u>144</u>
P17		<u>48</u>	<u>183</u>	<u>80</u>		<u>48</u>	<u>152</u>
P18		<u>51</u>	<u>194</u>	<u>85</u>		<u>51</u>	<u>161</u>
P19		<u>54</u>	<u>196</u>	<u>90</u>		<u>54</u>	<u>165</u>
P20		<u>57</u>				<u>57</u>	
		<u>60</u>				<u>60</u>	

TKT. # 3021

I

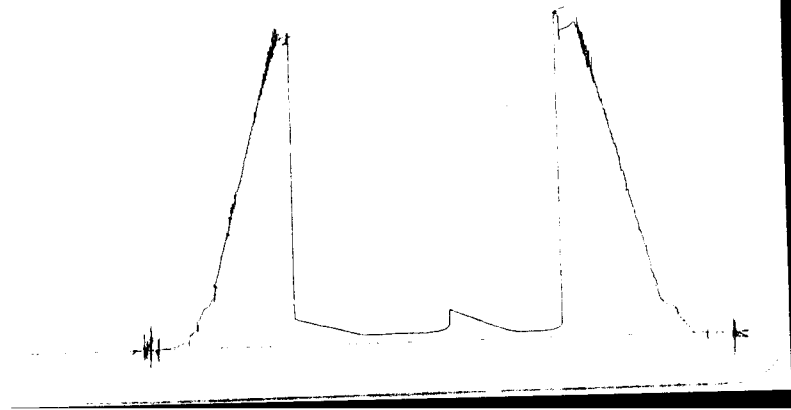
Ex 151
9h37



TKT # 3021²

DST#3

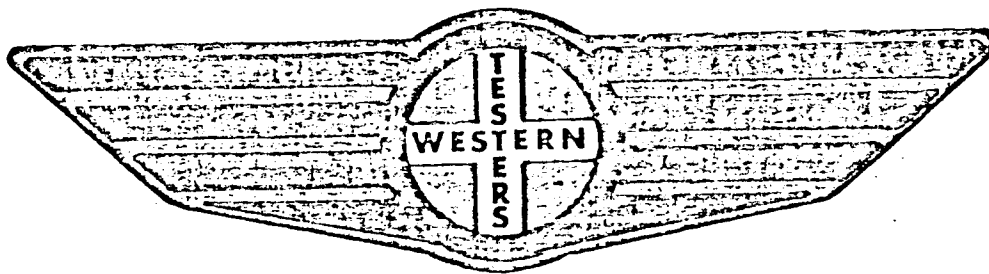
0



FORMATION

TEST

REPORT



Home Office:

P.O. Box 1599

Wichita, Kansas 67201

Phone (316) 262-5861

Company

RISEDON LIMITED

Lease and Well No.

#1 KERR

Sec. 24

Twp. 29S

Rge. 14W

Test No. 4

Date 12/1/83

WESTERN TESTING CO. INC.
SUBSURFACE PRESSURE SURVEY

DATE: 12/1/83
CUSTOMER: RIESDON LIMITED
WELL: 1
ELEVATION (KB): 1763
SECTION: 24
RANGE: 14W
GAUGE SN #6246

TEST: 4

FORMATION: ARB
TOWNSHIP: 29S

COUNTY: PRATT
RANGE: 5200

TICKET #3022
LEASE: KERR
GEOLOGIST:
STATE: KANSAS
CLOCK: 12

INTERVAL TEST FROM: 4424 FT TO: 4438 FT TOTAL DEPTH: 4504 FT
DEPTH OF SELECTIVE ZONE: FT
PACKER DEPTH: 4419 FT SIZE: 6 5/8 IN PACKER DEPTH: 4424 FT SIZE: 6 5/8 IN
PACKER DEPTH: 4438 FT SIZE: 6 5/8 IN PACKER DEPTH: FT SIZE: IN

DRILLING CONTRACTOR: ALDEBARAN DRLG
MUD TYPE: CHEM VISCOSITY: 54
WEIGHT: 9.3 WATER LOSS (CC): 10.4
CHLORIDES (P.P.M.): 7000

JARS - MAKE: SERIAL NUMBER:
DID WELL FLOW? REVERSED OUT?

DRILL COLLAR LENGTH:	552	FT	I.D.:	2.25	IN
WEIGHT PIPE LENGTH:		FT	I.D.:		IN
DRILL PIPE LENGTH:	3926	FT	I.D.:	3.8	IN
TEST TOOL LENGTH:	22	FT	TOOL SIZE:	5 1/2 O.D.	IN
ANCHOR LENGTH:	14	FT	SIZE:	5 1/2 O.D.	IN
SURFACE CHOKE SIZE:	3/4	IN	BOTTOM CHOKE SIZE:	3/4	IN
MAIN HOLE SIZE:	7 7/8	IN	TOOL JOINT SIZE:	4 FH	IN

BLOW: INITIAL FLOW PERIOD WEAK BUILDING
TO STRONG. FINAL FLOW PERIOD
STRONG BLOW. GAS TO SURFACE TO A
SMALL MEASURE ON INITIAL FLOW PERIOD.

RECOVERED:	360	FT	OF:	SLIGHT MUD CUT GASSY OIL.
RECOVERED:		FT	OF:	
RECOVERED:		FT	OF:	
RECOVERED:		FT	OF:	
RECOVERED:		FT	OF:	
RECOVERED:		FT	OF:	
RECOVERED:		FT	OF:	
RECOVERED:		FT	OF:	
RECOVERED:		FT	OF:	

REMARKS: GRAVITY 44 CORRECTED.

TIME SET PACKER(S): 10:50 A.M.

TIME STARTED OFF BOTTOM: 12:50 P.M.

WELL TEMPERATURE: 120 °F

INITIAL HYDROSTATIC PRESSURE:

INITIAL FLOW PERIOD MIN: 30

INITIAL CLOSED IN PERIOD MIN: 27

FINAL FLOW PERIOD MIN: 30

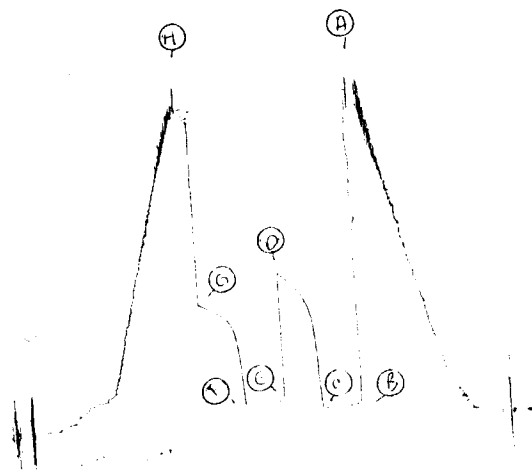
FINAL CLOSED IN PERIOD MIN: 33

FINAL HYDROSTATIC PRESSURE

(A) 2157	PSI
(B) 60	PSI TO (C) 64
(C) 983	PSI
(E) 110	PSI TO (F) 113
(G) 805	PSI
(H) 2122	PSI

TK# 3022

I



9787

7610' and
Below Straddle



tlc# 3022

0

