

WESTERN TESTING CO. INC.
SUBSURFACE PRESSURE SURVEY

DATE: 10/16/83
CUSTOMER: RAYMOND OIL CO. INC.
WELL: 1
ELEVATION (KB): 1990
SECTION: 28
RANGE: 14W
GAUGE SN #2606

TEST: 1
FORMATION: LANSING
TOWNSHIP: 29S
COUNTY: PRATT
STATE: KANSAS
RANGE: 4150
CLOCK: 12

TICKET #1955
LEASE: MOFFAT
GEOLOGIST: ?

INTERVAL TEST FROM: 4195 FT TO: 4212 FT TOTAL DEPTH: 4212 FT
DEPTH OF SELECTIVE ZONE: FT
PACKER DEPTH: 4190 FT SIZE: 6 3/4 IN PACKER DEPTH: 4195 FT SIZE: 6 3/4 IN
PACKER DEPTH: FT SIZE: IN PACKER DEPTH: FT SIZE: IN

DRILLING CONTRACTOR: WHITE & ELLIS DRLG.
MUD TYPE: SALTMUDSTA VISCOSITY: 42
WEIGHT: 9.5 WATER LOSS (CC): 16.0
CHLORIDES (P.P.M.): 50000
JARS - MAKE: NO SERIAL NUMBER:
DID WELL FLOW? NO REVERSED OUT? NO
DRILL COLLAR LENGTH: 329 FT I.D.: 2.25 IN
WEIGHT PIPE LENGTH: FT I.D.: IN
DRILL PIPE LENGTH: 3846 FT I.D.: 3.8 IN
TEST TOOL LENGTH: 20 FT TOOL SIZE: 5 1/2 OD IN
ANCHOR LENGTH: 17 FT SIZE: 5 1/2 OD IN
SURFACE CHOKE SIZE: 3/4 IN BOTTOM CHOKE SIZE: 3/4 IN
MAIN HOLE SIZE: 7 7/8 IN TOOL JOINT SIZE: 4 1/2 FH IN

BLOW: INITIAL FLOW PERIOD GOOD TO STRONG BLOW.
FINAL FLOW PERIOD GOOD DEPLETING TO WEAK BLOW.

RECOVERED: 930 FT OF: GAS ABOVE FLUID.
RECOVERED: 90 FT OF: GAS & OIL CUT WATERY MUD.
RECOVERED: FT OF: 40% GAS; 20% OIL; 25% WATER; 15% MUD.
RECOVERED: 185 FT OF: HEAVY OIL & GAS CUT WATERY MUD.
RECOVERED: FT OF: 30% GAS; 40% OIL; 25% WATER; 5% MUD.
RECOVERED: FT OF: CHLORIDES 85000 PPM.
RECOVERED: FT OF:
RECOVERED: FT OF:
RECOVERED: FT OF:

REMARKS: SLID TOOL 8' TO BOTTOM.
CLOCK STOPPED ON RECORDER #13267.

TIME SET PACKER(S): 1:40 AM
WELL TEMPERATURE: 118 °F
INITIAL HYDROSTATIC PRESSURE: (A) 2182 PSI
INITIAL FLOW PERIOD MIN: 30 (B) 78 PSI TO (C) 78 PSI
INITIAL CLOSED IN PERIOD MIN: 42 (D) 1137 PSI
FINAL FLOW PERIOD MIN: 85 (E) 113 PSI TO (F) 123 PSI
FINAL CLOSED IN PERIOD MIN: 87 (G) 1315 PSI
FINAL HYDROSTATIC PRESSURE (H) 2182 PSI

TIME STARTED OFF BOTTOM: 5:55 AM

WESTERN TESTING CO. INC.
PRESSURE DATA

DATE: 10/16/83

CUSTOMER: RAYMOND OIL CO. INC.

TEST: 1

ELEVATION (KB): 1990

FORMATION: LANSING

TOWNSHIP: 295

COUNTY: PRATT

LEASE: MOFFAT

GEOLOGIST: ?

LANRING

STATE: KANSAS

CLOCK: 12

(A)	INITIAL HYDROSTATIC PRESSURE:	2182	PSI
(B)	FIRST INITIAL FLOW PRESSURE:	78	PSI
(C)	FIRST FINAL FLOW PRESSURE:	78	PSI
(D)	INITIAL CLOSED-IN PRESSURE:	1137	PSI
(E)	SECOND INITIAL FLOW PRESSURE:	113	PSI
(F)	SECOND FINAL FLOW PRESSURE:	123	PSI
(G)	FINAL CLOSED-IN PRESSURE:	1315	PSI
(H)	FINAL HYDROSTATIC PRESSURE:	2182	PSI
	WELL TEMPERATURE:	118	'F
	OPEN TOOL:	1:40 AM	

	TIME - GIVEN	TIME - ACTUAL
FIRST FLOW PRESSURE:	30 MIN	30 MIN
INITIAL CLOSED-IN PRESSURE:	45 MIN	42 MIN
SECOND FLOW PRESSURE:	90 MIN	85 MIN
FINAL CLOSED-IN PRESSURE:	90 MIN	87 MIN

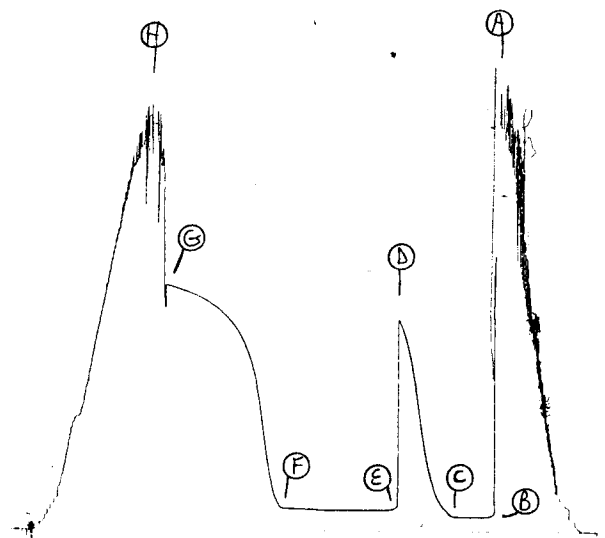
PRESSURE BREAKDOWN

[illegible]

2606 DST#1

TKT # 1955

I



WESTERN TESTING CO. INC.
SUBSURFACE PRESSURE SURVEY

DATE: 10/18/83
CUSTOMER: RAYMOND OIL CO. INC.
WELL: 1
ELEVATION (KB): 1990
SECTION: 28
RANGE: 14W
GAUGE SN #2606

TEST: 2
FORMATION: PLESINGTON
TOWNSHIP: 29S
COUNTY: PRATT
RANGE: 4150

TICKET #1956
LEASE: MOFFAT
GEOLOGIST: ?
STATE: KANSAS
CLOCK: 12

INTERVAL TEST FROM: 4369 FT TO: 4400 FT TOTAL DEPTH: 4400 FT
DEPTH OF SELECTIVE ZONE: FT
PACKER DEPTH: 4364 FT SIZE: 6 3/4 IN Packer DEPTH: 4369 FT SIZE: 6 3/4 IN
PACKER DEPTH: FT SIZE: IN Packer DEPTH: FT SIZE: IN

DRILLING CONTRACTOR: WHITE & ELLIS DRLG.
MUD TYPE: SALTMUDSTA VISCOSITY: 44
WEIGHT: 9.7 WATER LOSS (CC): 11.2
CHLORIDES (P.P.M.): 53000
JARS - MAKE: NO SERIAL NUMBER:
DID WELL FLOW? NO REVERSED OUT? NO
DRILL COLLAR LENGTH: 327 FT I.D.: 2.25 IN
WEIGHT PIPE LENGTH: FT I.D.: IN
DRILL PIPE LENGTH: 4022 FT I.D.: 3.8 IN
TEST TOOL LENGTH: 20 FT TOOL SIZE: 5 1/2 OD IN
ANCHOR LENGTH: 31 FT SIZE: 5 1/2 OD IN
SURFACE CHOKE SIZE: 3/4 IN BOTTOM CHOKE SIZE: 3/4 IN
MAIN HOLE SIZE: 7 7/8 IN TOOL JOINT SIZE: 4 1/2 FH IN

BLOW: INITIAL FLOW PERIOD VERY WEAK BLOW
FOR 15 MINUTES. THEN DIED.
FINAL FLOW PERIOD FEW BUBBLES.

RECOVERED: 10	FT	OF: DRILLING MUD.
RECOVERED:	FT	OF:
RECOVERED:	FT	OF:
RECOVERED:	FT	OF:
RECOVERED:	FT	OF:
RECOVERED:	FT	OF:
RECOVERED:	FT	OF:
RECOVERED:	FT	OF:
RECOVERED:	FT	OF:

REMARKS:

TIME SET PACKER(S): 7:30 AM	TIME STARTED OFF BOTTOM: 10:15 AM
WELL TEMPERATURE: 119 °F	
INITIAL HYDROSTATIC PRESSURE:	(A) 2280 PSI
INITIAL FLOW PERIOD MIN: 30	(B) 37 PSI TO (C) 37 PSI
INITIAL CLOSED IN PERIOD MIN: 30	(D) 40 PSI
FINAL FLOW PERIOD MIN: 45	(E) 38 PSI TO (F) 38 PSI
FINAL CLOSED IN PERIOD MIN: 48	(G) 44 PSI
FINAL HYDROSTATIC PRESSURE	(H) 2145 PSI

4

TICKET #1956
LEASE: MOFFAT
GEOLOGIST: ?
PLESINGTON
95
STATE: KANSAS
CLOCK: 12

TICKET #1956
LEASE: MOFFAT
GEOLOGIST: ?
PLESINGTON
95
STATE: KANSAS
CLOCK: 12

TICKET #1956
LEASE: MOFFAT
GEOLOGIST: ?
PLESINGTON
95
STATE: KANSAS
CLOCK: 12

TICKET #1956
LEASE: MOFFAT
GEOLOGIST: ?
PLESINGTON
95
STATE: KANSAS
CLOCK: 12

TICKET #1956
LEASE: MOFFAT
GEOLOGIST: ?
PLESINGTON
95
STATE: KANSAS
CLOCK: 12

2606 DS#2

IKI # 1956

I

H

H

G F E D C B

WESTERN TESTING CO. INC.
SUBSURFACE PRESSURE SURVEY

DATE: 10/19/83
CUSTOMER: RAYMOND OIL CO. INC.
WELL: 1
ELEVATION (KB): 1985
SECTION: 28
RANGE: 14W
GAUGE SN #2606
TEST: 3
FORMATION: VIOLA
TOWNSHIP: 29S
COUNTY: PRATT
RANGE: 4150
TICKET #1957
LEASE: MOFFAT
GEOLOGIST: S. STIRLLING
STATE: KANSAS
CLOCK: 12

INTERVAL TEST FROM: 4546 FT TO: 4560 FT TOTAL DEPTH: 4560 FT
DEPTH OF SELECTIVE ZONE: FT
PACKER DEPTH: 4541 FT SIZE: 6 3/4 IN PACKER DEPTH: 4546 FT SIZE: 6 3/4 IN
PACKER DEPTH: FT SIZE: IN PACKER DEPTH: FT SIZE: IN

DRILLING CONTRACTOR: WHITE & ELLIS #2
MUD TYPE: SLT-STRCH VISCOSITY: 52
WEIGHT: 9.7 WATER LOSS (CC): 8.9
CHLORIDES (P.P.M.): 63000

JARS - MAKE: NO
DID WELL FLOW? NO
DRILL COLLAR LENGTH: 90 FT I.D.: 2 1/4 IN
WEIGHT PIPE LENGTH: FT I.D.: IN
DRILL PIPE LENGTH: 4436 FT I.D.: 3.8 IN
TEST TOOL LENGTH: 20 FT TOOL SIZE: 5 1/2 O.D. IN
ANCHOR LENGTH: 14 FT SIZE: 5 1/2 O.D. IN
SURFACE CHOKE SIZE: 3/4 IN BOTTOM CHOKE SIZE: 3/4 IN
MAIN HOLE SIZE: 7 7/8 IN TOOL JOINT SIZE: 4 1/2 XH IN

BLOW: INITIAL & FINAL FLOW PERIODS HAD
WEAK STEADY BLOWS OF 2"-2 1/2" INTO WATER.

RECOVERED: 180 FT OF: WATERY MUD & WATER;
RECOVERED: FT OF: 60' WATERY MUD; 120' WATER
RECOVERED: FT OF: CHLORIDES 68000 P.P.M.
RECOVERED: FT OF:
RECOVERED: FT OF:
RECOVERED: FT OF:
RECOVERED: FT OF:
RECOVERED: FT OF:
RECOVERED: FT OF:
RECOVERED: FT OF:

REMARKS:

TIME SET PACKER(S): 8:50 A.M.

TIME STARTED OFF BOTTOM: 12:50 P.M.

WELL TEMPERATURE: 128 °F

INITIAL HYDROSTATIC PRESSURE:

INITIAL FLOW PERIOD MIN: 40

INITIAL CLOSED IN PERIOD MIN: 42

FINAL FLOW PERIOD MIN: 60

FINAL CLOSED IN PERIOD MIN: 81

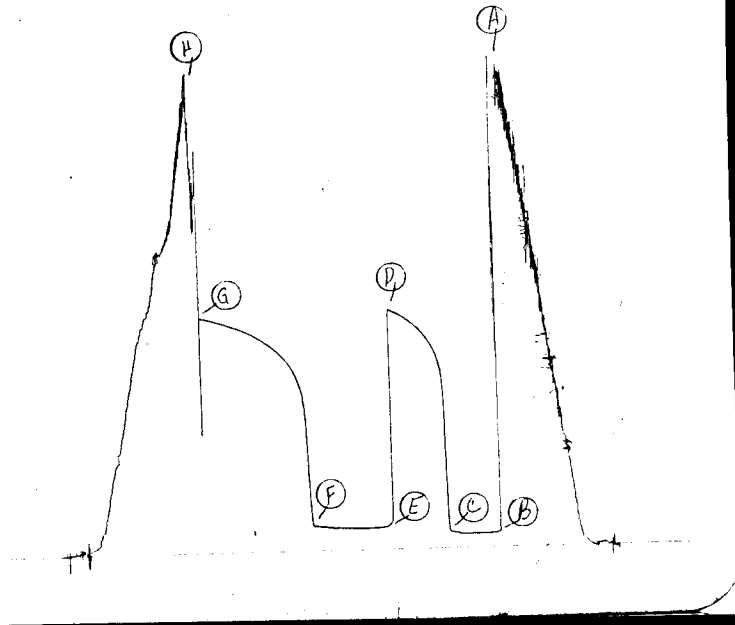
FINAL HYDROSTATIC PRESSURE

(A) 2517 PSI
(B) 74 PSI TO (C) 89 PSI
(D) 1271 PSI
(E) 112 PSI TO (F) 129 PSI
(G) 1249 PSI
(H) 2481 PSI

2606 DST#5

TKT # 1957

I



WESTERN TESTING CO INC.
SUBSURFACE PRESSURE SURVEY

DATE: 10/20/83

CUSTOMER: RAYMOND OIL CO. INC

WELL: 1

ELEVATION (KB): 1985

SECTION: 28

RANGE: 14W

GAUGE SN #2606

TEST: 4

FORMATION: SIMPSON SAND

TOWNSHIP: 29S

COUNTY: PRATT

RANGE: 4150

TICKET #1958

LEASE: MOFFAT

GEOLOGIST: S. STIRLLING

STATE: KANSAS

CLOCK: 12

INTERVAL TEST FROM: 4580 FT TO: 4616 FT TOTAL DEPTH: 4616 FT
DEPTH OF SELECTIVE ZONE: FT
PACKER DEPTH: 4575 FT SIZE: 6 3/4 IN PACKER DEPTH: 4580 FT SIZE: 6 3/4 IN
PACKER DEPTH: FT SIZE: IN PACKER DEPTH: FT SIZE: IN

DRILLING CONTRACTOR: WHITE & ELLIS #2

MUD TYPE: SLT-STRCH

WEIGHT: 9.8

CHLORIDES (P.P.M.): 63000

JARS - MAKE: NO

DID WELL FLOW? NO

DRILL COLLAR LENGTH: 90

WEIGHT PIPE LENGTH:

DRILL PIPE LENGTH: 4470

TEST TOOL LENGTH: 20

ANCHOR LENGTH: 36

SURFACE CHOKE SIZE: 3/4

MAIN HOLE SIZE: 7 7/8

VISCOSITY: 48

WATER LOSS (CC): 8.8

SERIAL NUMBER:

REVERSED OUT? NO

FT I.D.: 2 1/4 IN

FT I.D.: IN

FT I.D.: 3.8 IN

FT TOOL SIZE: 5 1/2 O.D. IN

FT SIZE: 5 1/2 O.D. IN

IN BOTTOM CHOKE SIZE: 3/4 IN

IN TOOL JOINT SIZE: 4 1/2 XH IN

BLOW: INITIAL & FINAL FLOW PERIODS HAD
WEAK BUT STEADY BLOWS THROUGHOUT
TEST.

RECOVERED: 90 FT OF: SLIGHTLY OIL CUT MUD.
RECOVERED: FT OF: 5% OIL; 95% MUD.
RECOVERED: FT OF:
RECOVERED: FT OF:
RECOVERED: FT OF:
RECOVERED: FT OF:
RECOVERED: FT OF:
RECOVERED: FT OF:
RECOVERED: FT OF:
RECOVERED: FT OF:

REMARKS:

TIME SET PACKER(S): 8:55 P.M.

WELL TEMPERATURE: 123 °F

INITIAL HYDROSTATIC PRESSURE:

INITIAL FLOW PERIOD MIN: 30

INITIAL CLOSED IN PERIOD MIN: 42

FINAL FLOW PERIOD MIN: 45

FINAL CLOSED IN PERIOD MIN: 36

FINAL HYDROSTATIC PRESSURE

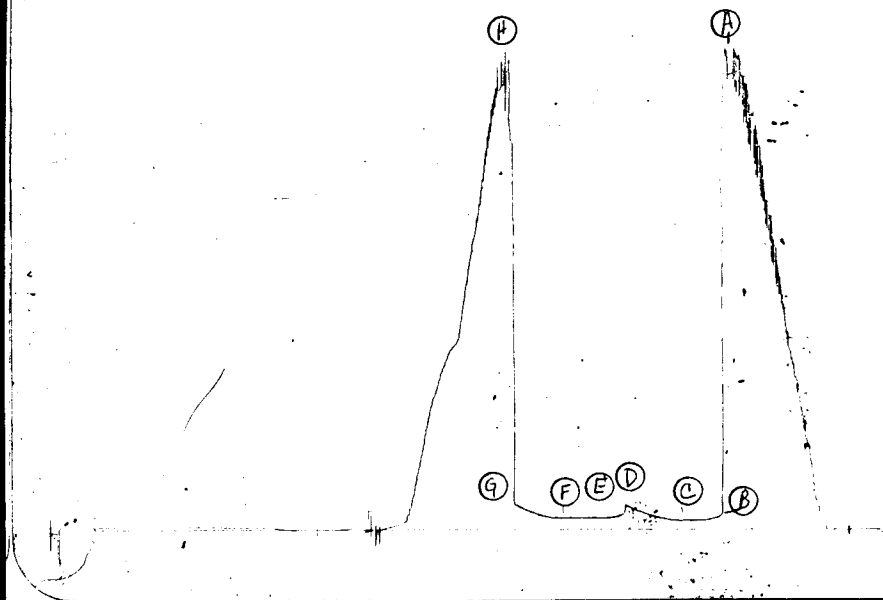
TIME STARTED OFF BOTTOM: 11:40 P.M.

(A) 2513 PSI
(B) 45 PSI TO (C) 45 PSI
(D) 123 PSI
(E) 59 PSI TO (F) 59 PSI
(G) 130 PSI
(H) 2454 PSI

2606 DST # 4

TKT # 1958

I



WESTERN TESTING CO. INC.
SUBSURFACE PRESSURE SURVEY

DATE: 10/21/83
CUSTOMER: RAYMOND OIL CO. INC.
WELL: 1
ELEVATION (KB): 1985
SECTION: 28
RANGE: 14W
GAUGE SN #2606

TEST: 5
FORMATION: SIMPSON SAND
TOWNSHIP: 29S
COUNTY: PRATT
RANGE: 4150

TICKET #1959
LEASE: MOFFAT
GEOLOGIST: S. STIRLLING
STATE: KANSAS
CLOCK: 12

INTERVAL TEST FROM: 4580 FT TO: 4637 FT TOTAL DEPTH: 4637 FT
DEPTH OF SELECTIVE ZONE: FT
PACKER DEPTH: 4575 FT SIZE: 6 3/4 IN PACKER DEPTH: 4580 FT SIZE: 6 3/4 IN
PACKER DEPTH: FT SIZE: IN PACKER DEPTH: FT SIZE: IN

DRILLING CONTRACTOR: WHITE & ELLIS #2
MUD TYPE: SLT-STRCH VISCOSITY: 48
WEIGHT: 9.8 WATER LOSS (CC): 8.8
CHLORIDES (P.P.M.): 63000
JARS - MAKE: NO SERIAL NUMBER:
DID WELL FLOW? NO REVERSED OUT? NO
DRILL COLLAR LENGTH: 90 FT I.D.: 2 1/4 IN
WEIGHT PIPE LENGTH: FT I.D.: IN
DRILL PIPE LENGTH: 4501 FT I.D.: 3.8 IN
TEST TOOL LENGTH: 20 FT TOOL SIZE: IN
ANCHOR LENGTH: 57 FT SIZE: 4.5DP+5.5Perf: IN
SURFACE CHOKE SIZE: 3/4 IN BOTTOM CHOKE SIZE: 3/4 IN
MAIN HOLE SIZE: 7 7/8 IN TOOL JOINT SIZE: 4 1/2 XH IN

BLOW: INITIAL FLOW PERIOD VERY WEAK
DIED IN 20 MINUTES.
FINAL FLOW PERIOD VERY WEAK BLOW
DIED IN 7 MINUTES.

RECOVERED: 65	FT	OF: DRILLING MUD (OIL SPECKED)
RECOVERED:	FT	OF:
RECOVERED:	FT	OF:
RECOVERED:	FT	OF:
RECOVERED:	FT	OF:
RECOVERED:	FT	OF:
RECOVERED:	FT	OF:
RECOVERED:	FT	OF:
RECOVERED:	FT	OF:

REMARKS:

TIME SET PACKER(S): 1:35 P.M.
WELL TEMPERATURE: 123 °F

TIME STARTED OFF BOTTOM: 3:35 P.M.

INITIAL HYDROSTATIC PRESSURE:	(A) 2496	PSI	
INITIAL FLOW PERIOD MIN: 30	(B) 47	PSI TO (C) 47	PSI
INITIAL CLOSED IN PERIOD MIN: 24	(D) 103	PSI	
FINAL FLOW PERIOD MIN: 30	(E) 59	PSI TO (F) 59	PSI
FINAL CLOSED IN PERIOD MIN: 30	(G) 103	PSI	
FINAL HYDROSTATIC PRESSURE	(H) 2465	PSI	

